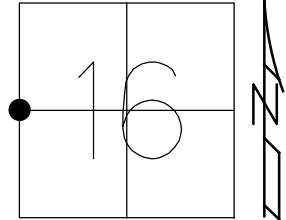


O.D.O.T. DISTRICT 2 SURVEY OFFICE (USE ONLY)

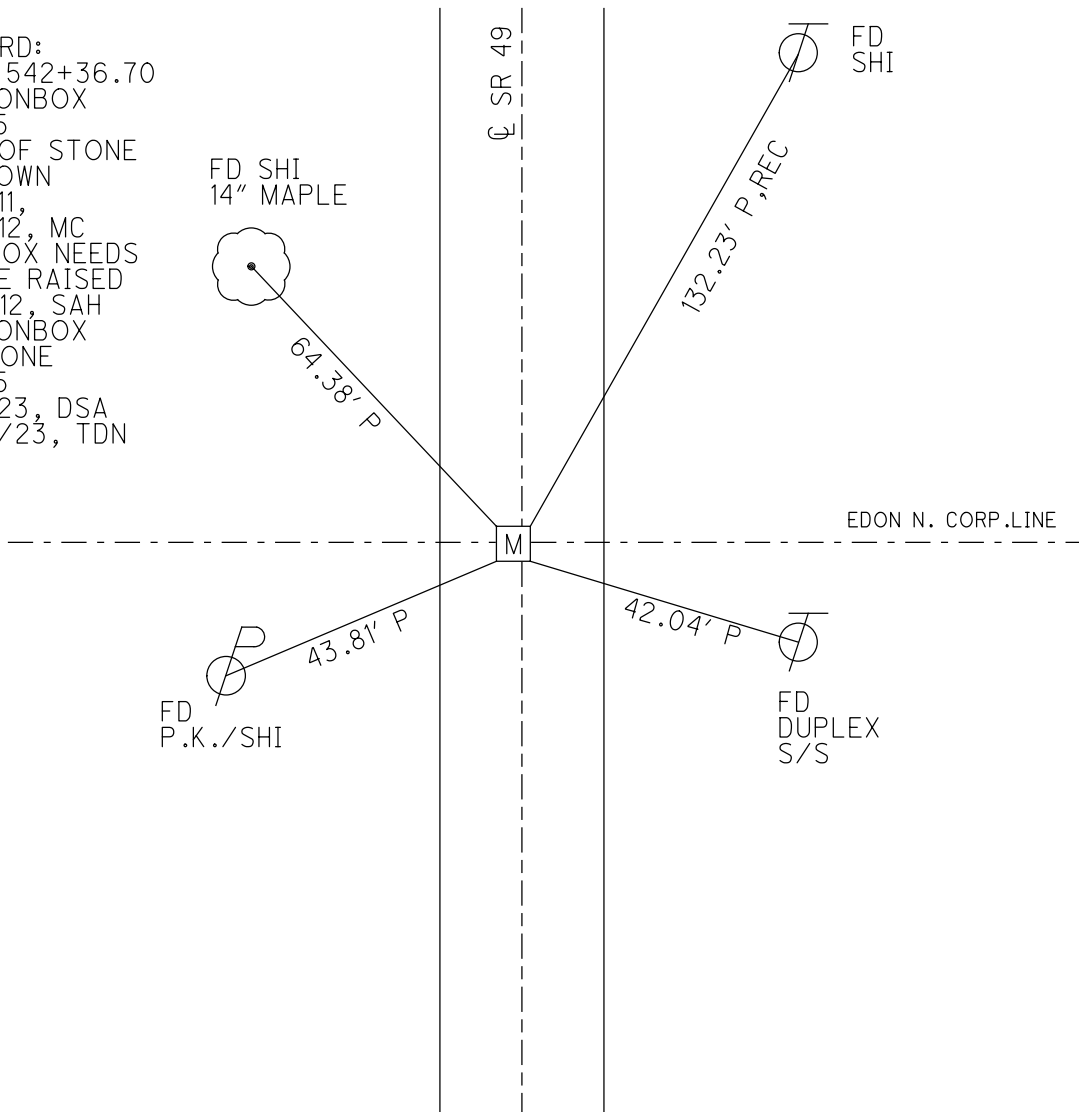
PERSONNEL _____ REFERENCE NO. 25 SHEET 5 OF 18
 NOTES RHOADES DATE 7/5/23 ROUTE SR 49
 H.C. AUBLE WEATHER SUNNY COUNTY WILLIAMS
 R.C. ASTON TEMP. 82° TOWNSHIP FLORENCE
 DWG BY RHOADES PID PAVETRAIN SECTION 16
 T 7 N R 1 E

TYPE MONUMENT MONBOX W/STONE
 ON SURFACE - ~~BELOW~~ ON
 OFFSET Q PAVEMENT 0.4' ~~LT~~ : RT
11.3' TO RT EDGE PAVEMENT
 STATION: 542+36.58



HORZ. DATUM: NAD83 2011 GEOID: NAVD88 2018
 GRID: NORTHING: 699199.727 EASTING: 13447605.435

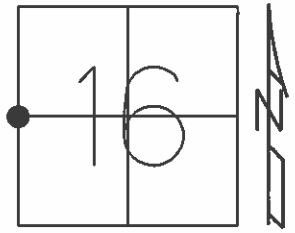
RECORD:
 STA. 542+36.70
 FD MONBOX
 REF25
 TOP OF STONE
 14" DOWN
 2/7/11,
 5/9/12, MC
 MONBOX NEEDS
 TO BE RAISED
 9/11/12, SAH
 FD MONBOX
 W/STONE
 REF25
 7/5/23, DSA
 11/27/23, TDN



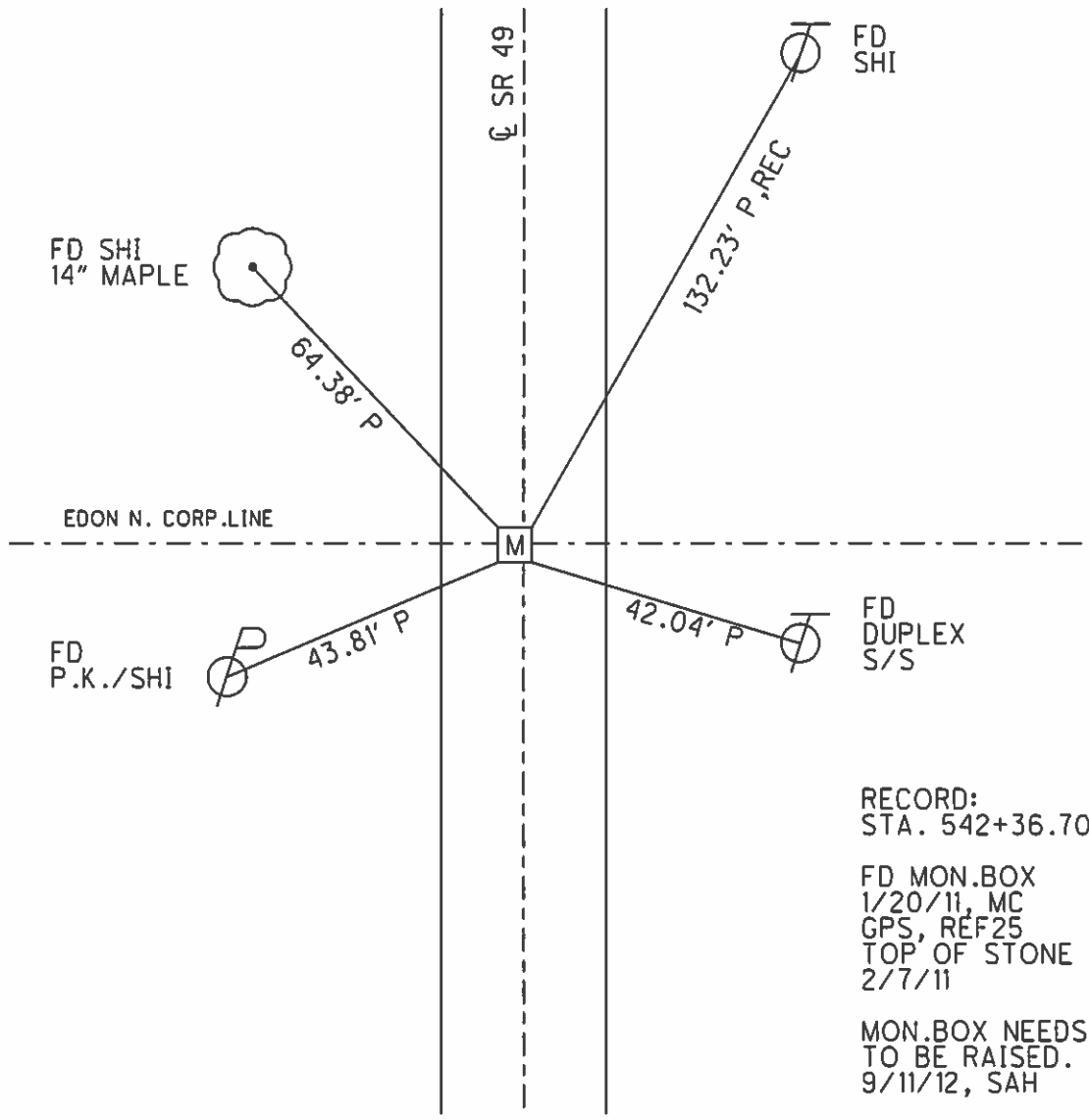
O.D.O.T. DISTRICT 2 SURVEY OFFICE (USE ONLY)

PERSONNEL _____ REFERENCE NO. 25 SHEET 5 OF 18
 NOTES HUSS DATE 5/9/12 ROUTE SR 49
 H.C. CANTERBURY WEATHER SUNNY/WINDY COUNTY WILLIAMS
 R.C. HARBAUGH TEMP. 60° TOWNSHIP FLORENCE
 _____ SECTION 16
 _____ T 7 N R 1 E

TYPE MONUMENT STONE IN MON.BOX
~~ON SURFACE~~ - BELOW 14"
~~LEFT~~ - CL PAV'T - RIGHT 0.4'
11.3' TO RT EDGE PAVEMENT
 S.L.M. 542+36.58



Grid: Northing: 699199.744 Easting: 1347605.264



RECORD:
 STA. 542+36.70
 FD MON.BOX
 1/20/11, MC
 GPS, REF25
 TOP OF STONE
 2/7/11
 MON.BOX NEEDS
 TO BE RAISED.
 9/11/12, SAH