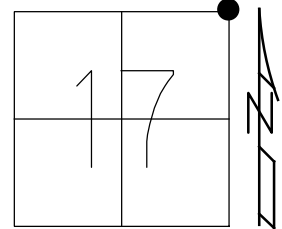


O.D.O.T. DISTRICT 2 SURVEY OFFICE (USE ONLY)

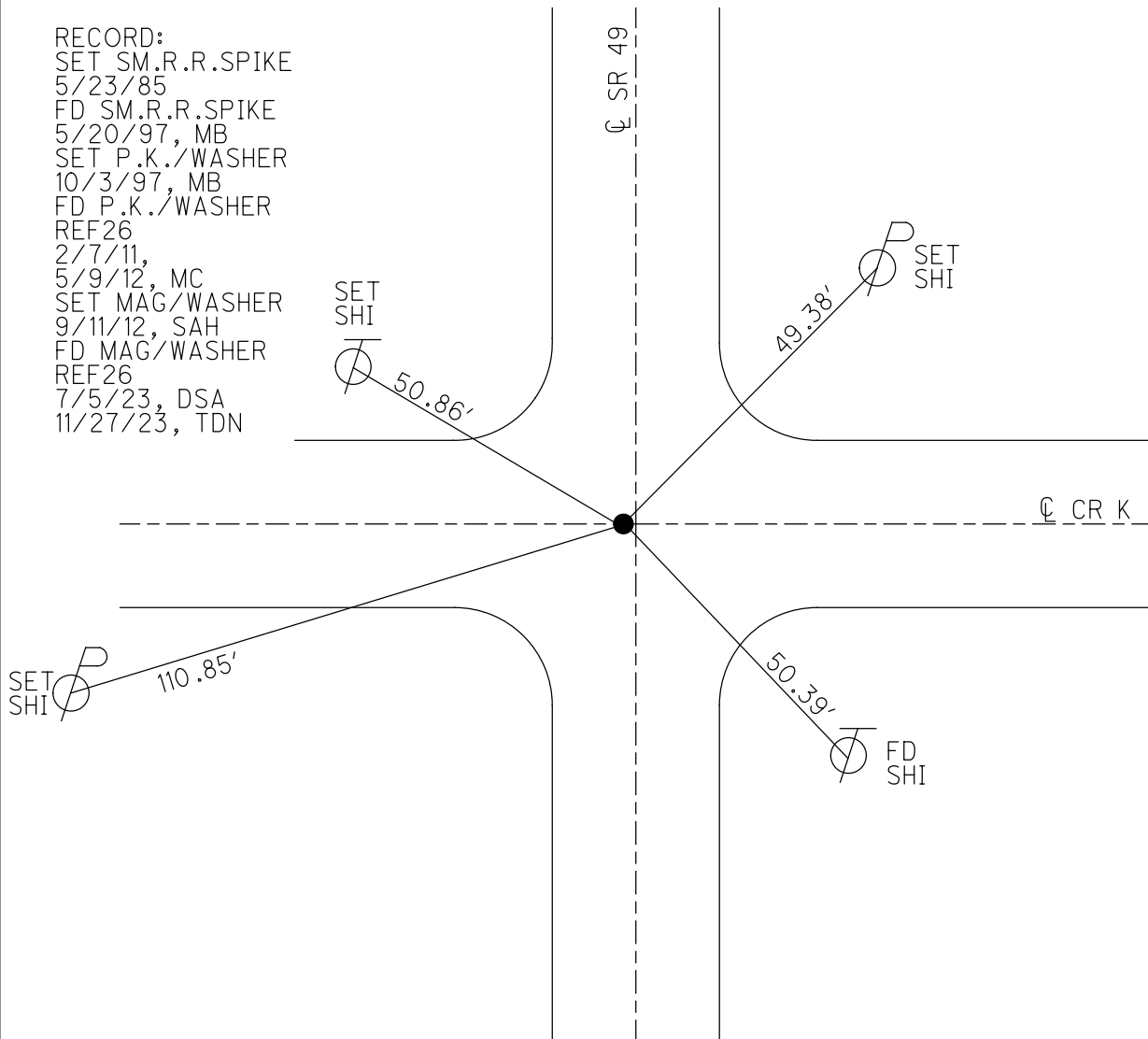
PERSONNEL \_\_\_\_\_ REFERENCE NO. 26 SHEET 6 OF 18  
 NOTES RHOADES DATE 7/5/23 ROUTE SR 49  
 H.C. AUBLE WEATHER SUNNY COUNTY WILLIAMS  
 R.C. ASTON TEMP. 82° TOWNSHIP FLORENCE  
 DWG BY RHOADES PID PAVETRAIN SECTION 17  
 T 7 N R 1 E

TYPE MONUMENT MAG/WASHER  
 ON SURFACE - ~~BELOW~~ ON  
 OFFSET Q PAVEMENT 1.5' LT : ~~RT~~  
- TO - EDGE PAVEMENT  
 STATION: 568+86.43



HORZ. DATUM: NAD83 2011 GEOID: NAVD88 2018  
 GRID: NORTHING: 701848.966 EASTING: 1347664.438

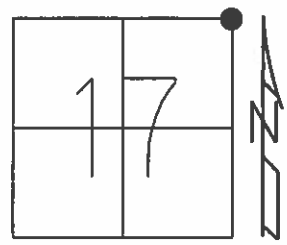
RECORD:  
 SET SM.R.R.SPIKE  
 5/23/85  
 FD SM.R.R.SPIKE  
 5/20/97, MB  
 SET P.K./WASHER  
 10/3/97, MB  
 FD P.K./WASHER  
 REF26  
 2/7/11,  
 5/9/12, MC  
 SET MAG/WASHER  
 9/11/12, SAH  
 FD MAG/WASHER  
 REF26  
 7/5/23, DSA  
 11/27/23, TDN



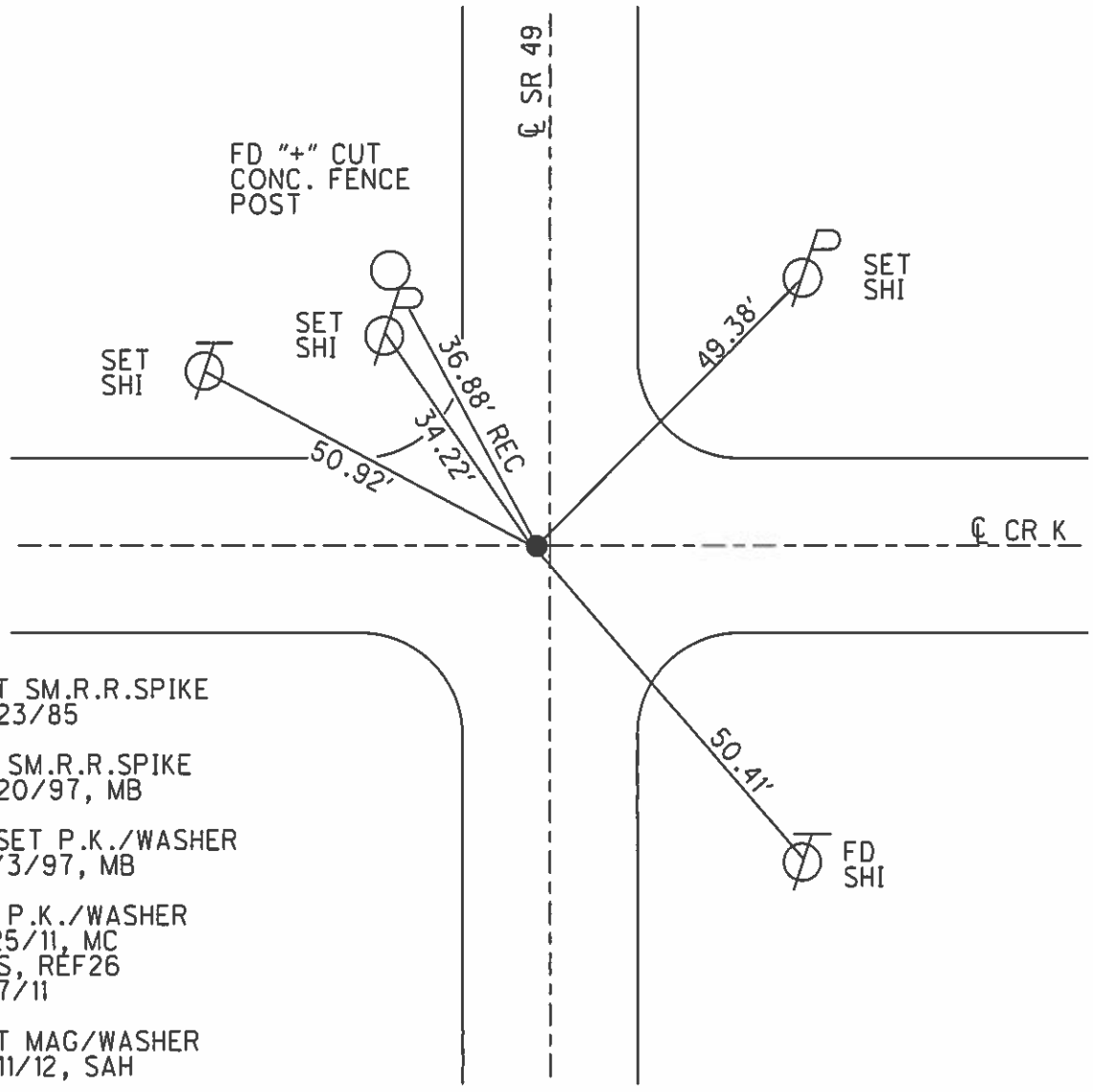
O.D.O.T. DISTRICT 2 SURVEY OFFICE (USE ONLY)

PERSONNEL \_\_\_\_\_ REFERENCE NO. 26 SHEET 6 OF 18  
 NOTES HUSS DATE 5/9/12 ROUTE SR 49  
 H.C. CANTERBURY WEATHER CLEAR/WINDY COUNTY WILLIAMS  
 R.C. HARABUGH TEMP. 60° TOWNSHIP FLORENCE  
 \_\_\_\_\_ SECTION 17  
 \_\_\_\_\_ T 7 N R 1 E

TYPE MONUMENT P.K./WASHER  
 ON SURFACE - ~~BELOW~~ ON \_\_\_\_\_  
 LEFT - ☉ PAV'T - ~~RIGHT~~ 1.0', ON ☉ CR K  
 \_\_\_\_\_ TO \_\_\_\_\_ EDGE PAVEMENT  
 S.L.M. 568+86.43



Grid: Northing: 701848.929 Easting: 1347664.334



- SET SM.R.R.SPIKE  
5/23/85
- FD SM.R.R.SPIKE  
5/20/97, MB
- RESET P.K./WASHER  
10/3/97, MB
- FD P.K./WASHER  
1/25/11, MC  
GPS, REF26  
2/7/11
- SET MAG/WASHER  
9/11/12, SAH