

O.D.O.T. DISTRICT 2 SURVEY OFFICE (USE ONLY)

PERSONNEL

REFERENCE NO. 32 A

SHEET 15 OF 18

NOTES HUSS

DATE 5/11/12

ROUTE SR 49

H.C. HUSS

WEATHER CLEAR/FAIR

COUNTY WILLIAMS

R.C. CANTERBURY

TEMP. 63°

TOWNSHIP NORTHWEST

DWG BY WHITAKER PID 98653

SECTION 3

T 10 N R 4 E

TYPE MONUMENT 1" IPIPE

ON SURFACE - ~~BELOW~~ ON

OFFSET \bar{C} PAVEMENT 98.5', 0.8' S ~~LT~~ : RT

10' TO S EDGE PAVEMENT

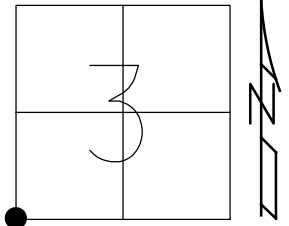
STATION: 752+29.91

HORIZ.DATUM: NAD83 2011

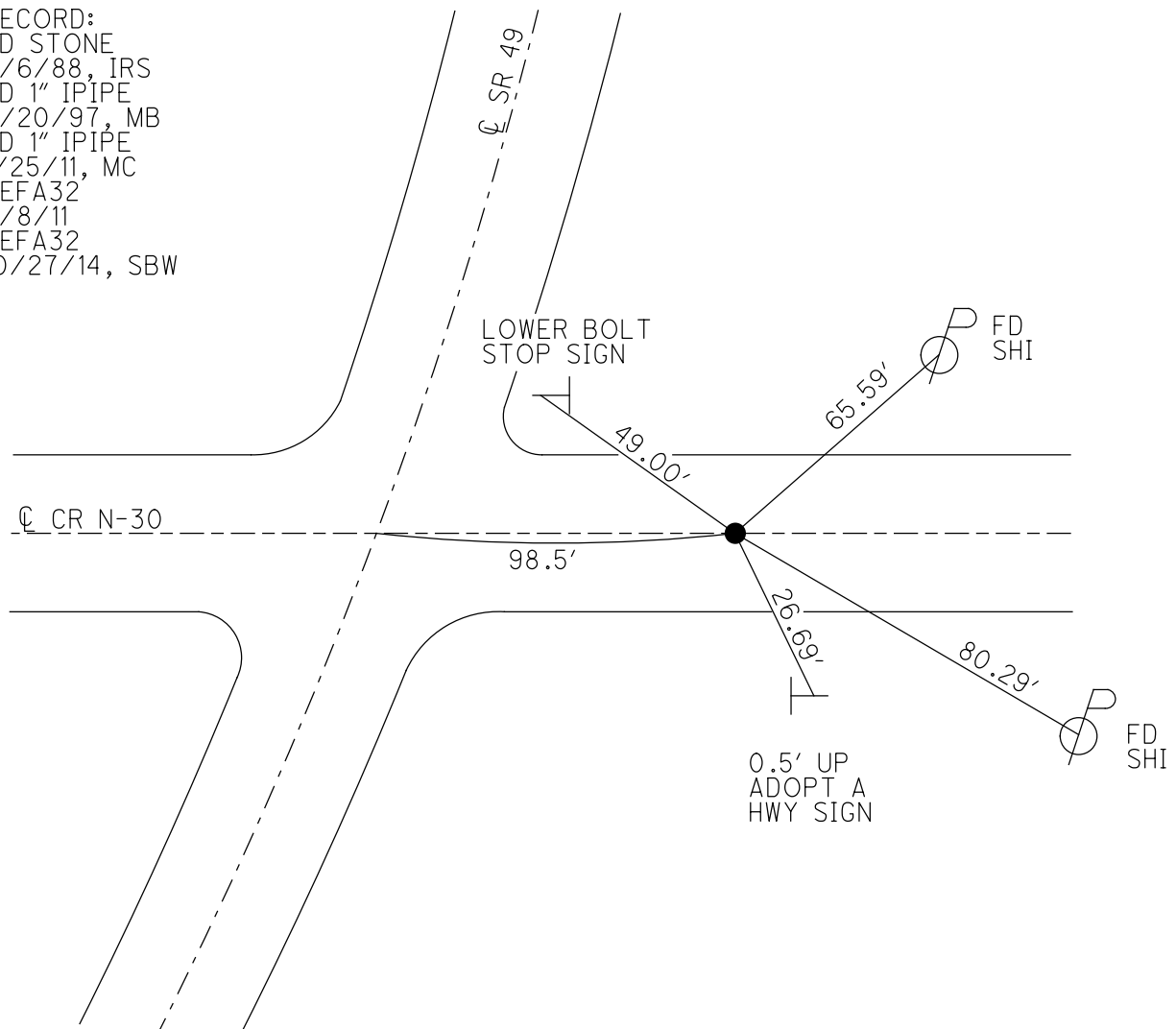
GEOID: NAVD88 2012A

GRID: NORTHING: 719933.713

EASTING: 1348983.015



RECORD:
 FD STONE
 7/6/88, IRS
 FD 1" IPIPE
 5/20/97, MB
 FD 1" IPIPE
 1/25/11, MC
 REFA32
 2/8/11
 REFA32
 10/27/14, SBW



O.D.O.T. DISTRICT 2 SURVEY OFFICE (USE ONLY)

PERSONNEL _____ REFERENCE NO. 32 A SHEET 15 OF 32 A

NOTES HUSS DATE 5/11/12 ROUTE SR 49
 H.C. HUSS WEATHER CLEAR/FAIR COUNTY WILLIAMS
 R.C. CANTERBURY TEMP. 63° TOWNSHIP NORTHWEST
 _____ SECTION 3, 4, 9, 10
 _____ T 10 S R 4 W

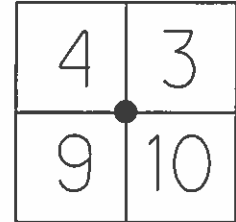
TYPE MONUMENT 1" IPIPE

ON SURFACE - ~~BELOW~~ ON _____

~~LEFT~~ - $\text{\textcircled{C}}$ PAV'T - RIGHT 98.5', 0.8' S. OF $\text{\textcircled{C}}$ CR N-30
10.0' TO S EDGE PAVEMENT (CR N-30)

S.L.M. 752+40

Grid: Northing: 719933.752 Easting: 1348982.864



FD STONE
7/6/88, IRS

 FD 1" IPIPE
5/20/97, MB

 FD 1" IPIPE
1/25/11, MC
GPS, REFA32
2/8/11

