

O.D.O.T. DISTRICT 2 SURVEY OFFICE (USE ONLY)

PERSONNEL

REFERENCE NO. 33

SHEET 16 OF 18

NOTES RHOADES

DATE 7/28/22

ROUTE SR 49

H.C. RHOADES

WEATHER CLOUDY

COUNTY WILLIAMS

R.C. WHITAKER

TEMP. 75°

TOWNSHIP NORTHWEST

DWG BY RHOADES PID PAVETRAIN

SECTION 3

T 10 N R 4 E

TYPE MONUMENT MAG/WASHER

ON SURFACE - ~~BELOW~~ ON

OFFSET 0 PAVEMENT ON LT : RT

10' TO LT EDGE PAVEMENT

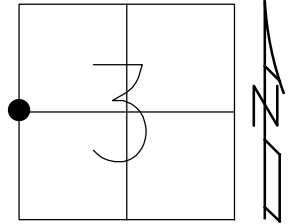
STATION: 778+78.37

HORIZ.DATUM: NAD83 2011

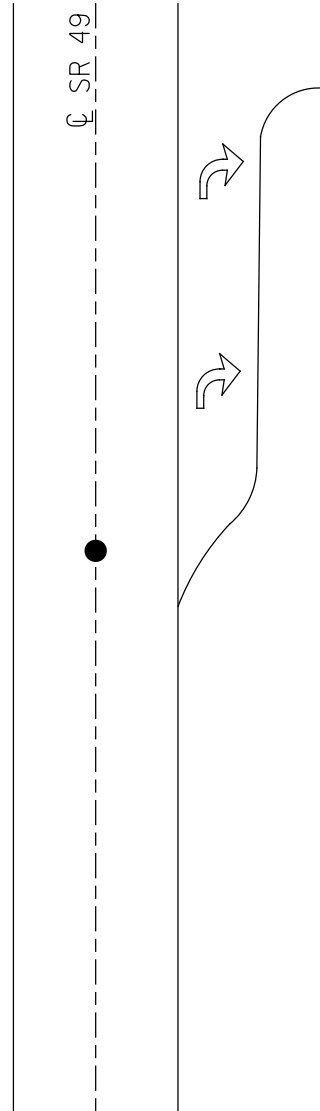
GEOID: NAVD88 2018

GRID: NORTHING: 722581.971

EASTING: 1349018.650



RECORD:
SET SM.R.R.SPIKE
7/6/88, IRS
FD R.R.SPIKE
2" DOWN
5/20/97, MB
FD SQ.HEADED
SM.R.R.SPIKE
REF33
2/8/11
FD R.R.SPIKE
2" DOWN
5/11/12, MC
SET MAG/WASHER
9/12/12, SAH
FD MAG/WASHER
REF33
10/27/14, EBW
FD MAG/WASHER
NEWREF33
7/28/22,
3/8/23, JMR



O.D.O.T. DISTRICT 2 SURVEY OFFICE (USE ONLY)

PERSONNEL

REFERENCE NO. 33

SHEET 16 OF 18

NOTES HUSS

DATE 5/11/12

ROUTE SR 49

H.C. HUSS

WEATHER CLEAR/FAIR

COUNTY WILLIAMS

R.C. CANTERBURY

TEMP. 63°

TOWNSHIP NORTHWEST

DWG BY WHITAKER PID 98653

SECTION 3

T 10 N R 4 E

TYPE MONUMENT R.R. SPIKE

~~ON SURFACE~~ - BELOW 2"

OFFSET ☉ PAVEMENT ON LT : RT

10' TO LT EDGE PAVEMENT

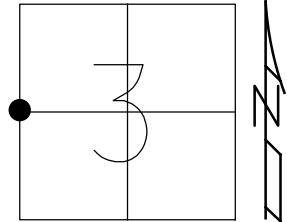
STATION: 778+78.37

HORZ. DATUM: NAD83 2011

GEOID: NAVD88 2012A

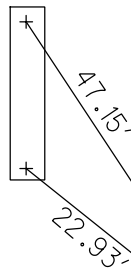
GRID: NORTHING: 722581.929

EASTING: 1349018.641



RECORD:
 SET SM.R.R.SPIKE
 7/6/88, IRS
 FD R.R.SPIKE
 2" DOWN
 5/20/97, MB
 FD SQ.HEADED
 SM.R.R.SPIKE
 REF33
 2/8/11
 SET MAG/WASHER
 9/12/12, SAH
 FD MAG/WASHER
 REF33
 10/27/14, EBW

CUT "+" IN
 DRIVE RCP

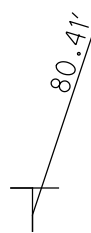


☉ SR 49

31.34'

FD CUT NOTCH
 1.3' UP
 I-BEAM SIGN POST

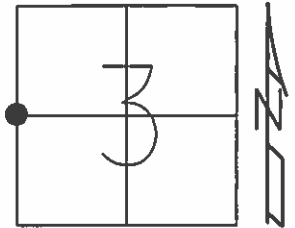
FD CUT NOTCH
 1.3' UP
 SIGN POST
 55 MPH



O.D.O.T. DISTRICT 2 SURVEY OFFICE (USE ONLY)

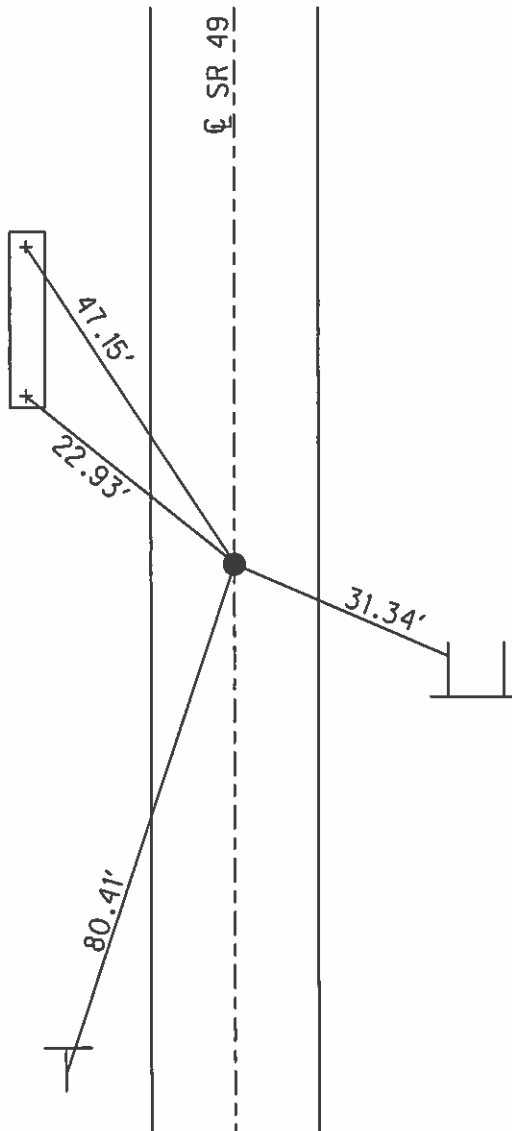
PERSONNEL _____ REFERENCE NO. 33 SHEET 16 OF 18
 NOTES HUSS DATE 5/11/12 ROUTE SR 49
 H.C. HUSS WEATHER CLEAR/FAIR COUNTY WILLIAMS
 R.C. CANTERBURY TEMP. 63° TOWNSHIP NORTHWEST
 _____ SECTION 3
 _____ T 10 S R 4 W

TYPE MONUMENT R.R.SPIKE
~~ON SURFACE~~ - BELOW 2"
 LEFT - ☉ PAV'T - RIGHT ON
10.0' TO LT EDGE PAVEMENT
 S.L.M. 778+78.50



Grid: Northing: 722582.093 Easting: 1349018.619

CUT "+" IN BOTH ENDS OF CONC. DRIVE PIPE



SET SM.R.R.SPIKE
7/6/88, IRS

FD R.R.SPIKE
2" BELOW
5/20/97, MB

FD SO.HEADED
SM.R.R.SPIKE
GPS, REF 33
2/8/11

SET MAG/WASHER
9/12/12, SAH

FD CUT NOTCH
IN W.LEG I-BEAM
SIGN POST. 1.3' UP

FD CUT NOTCH
1.3' UP SIGN POST
55 MPH