

O.D.O.T. DISTRICT 2 SURVEY OFFICE (USE ONLY)

PERSONNEL

REFERENCE NO. 34

SHEET 17 OF 18

NOTES RHOADES
 H.C. CANTERBURY
 R.C. LAU

DATE 5/1/13
 WEATHER CLEAR
 TEMP. 74°

ROUTE SR 49
 COUNTY WILLIAMS
 TOWNSHIP NORTHWEST
 SECTION 3
 T 10 N R 4 E

DWG BY WHITAKER PID 98653

TYPE MONUMENT P.K. NAIL

ON SURFACE - ~~BELOW~~ ON

OFFSET \varnothing PAVEMENT ON LT : RT
- TO - EDGE PAVEMENT

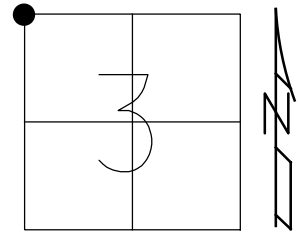
STATION: 805+19.98

HORZ.DATUM: NAD83 2011

GEOID: NAVD88 2012A

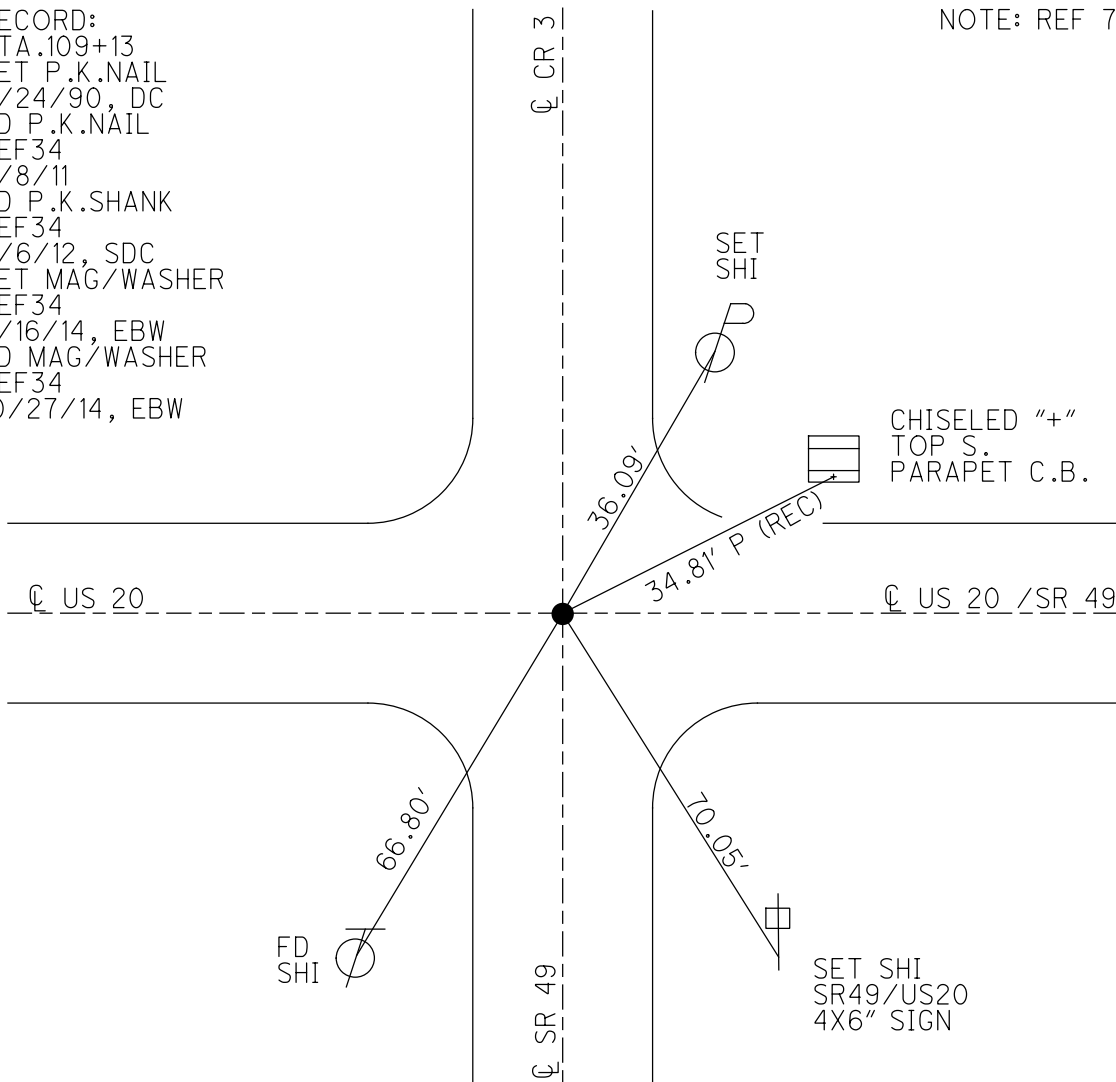
GRID: NORTHING: 725223.260

EASTING: 1349057.210



RECORD:
 STA.109+13
 SET P.K.NAIL
 8/24/90, DC
 FD P.K.NAIL
 REF34
 2/8/11
 FD P.K.SHANK
 REF34
 4/6/12, SDC
 SET MAG/WASHER
 REF34
 7/16/14, EBW
 FD MAG/WASHER
 REF34
 10/27/14, EBW

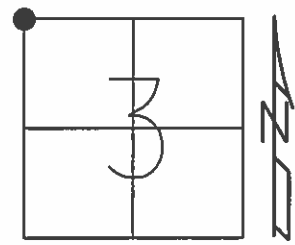
NOTE: REF 7 US 20



O.D.O.T. DISTRICT 2 SURVEY OFFICE (USE ONLY)

PERSONNEL _____ REFERENCE NO. 34 SHEET 17 OF 18
 NOTES STONE DATE 7/10/90 ROUTE SR 49
 H.C. CURTIS WEATHER FAIR COUNTY WILLIAMS
 R.C. HOUSEHOLDER TEMP. 79° TOWNSHIP NORTHWEST
 SECTION 3
 T 10 S R 4 W

TYPE MONUMENT P.K.NAIL
 ON SURFACE - ~~BELOW~~ ON
 LEFT - ☉ PAV'T - RIGHT ON
- TO - EDGE PAVEMENT
 S.L.M. 805+19.99



Grid: Northing: 725223.302 Easting: 1349057.209

NOTE:
 REF 7, US 20
 STA.109+13
 SET P.K.NAIL
 8/24/90, DC
 FD P.K.NAIL
 AT SURFACE
 GPS, REF34
 2/8/11

