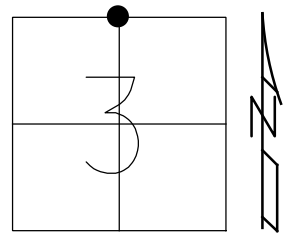


O.D.O.T. DISTRICT 2 SURVEY OFFICE (USE ONLY)

PERSONNEL _____ REFERENCE NO. 35 SHEET 18 OF 18
 NOTES RHOADES DATE 5/1/13 ROUTE SR 49
 H.C. CANTERBURY WEATHER CLEAR COUNTY WILLIAMS
 R.C. LAU TEMP. 74° TOWNSHIP NORTHWEST
 DWG BY WHITAKER PID 98653 SECTION 3
 T 10 N R 4 E

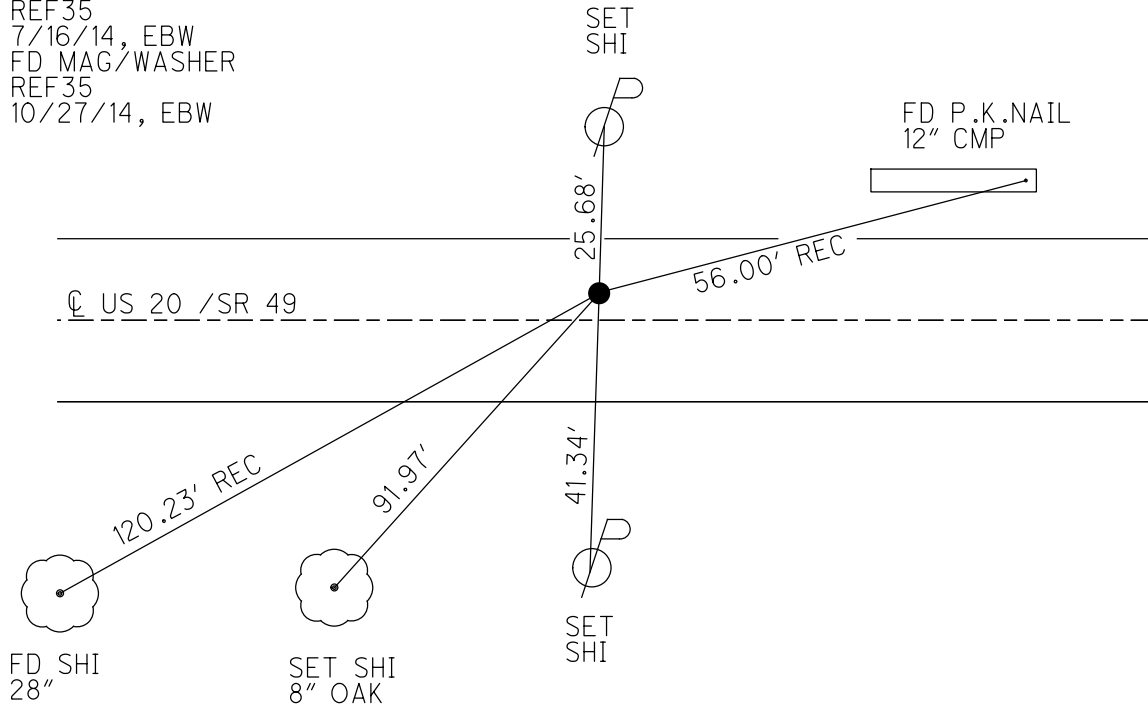
TYPE MONUMENT P.K. NAIL
 ON SURFACE - ~~BELOW~~ ON
 OFFSET \varnothing PAVEMENT ON LT : RT
- TO - EDGE PAVEMENT
 STATION: 831+55.75



HORZ.DATUM: NAD83 2011 GEOID: NAVD88 2012A
 GRID: NORTHING: 725199.861 EASTING: 1351692.925

RECORD:
 STA.135+49
 SET P.K.NAIL
 8/24/90, DC
 FD P.K. NAIL
 REF35
 4/5/12, SDC
 SET MAG/WASHER
 REF35
 7/16/14, EBW
 FD MAG/WASHER
 REF35
 10/27/14, EBW

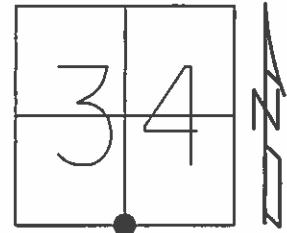
NOTE: REF 8 US 20



O.D.O.T. DISTRICT 2 SURVEY OFFICE (USE ONLY)

PERSONNEL _____ REFERENCE NO. 35 SHEET 18 OF 18
 NOTES STONE DATE 7/10/90 ROUTE SR 49
 H.C. CURTIS WEATHER FAIR COUNTY WILLIAMS
 R.C. HOUSEHOLDER TEMP. 79° TOWNSHIP NORTHWEST
 _____ SECTION 34
 _____ T 10 S R 4 W

TYPE MONUMENT P.K.NAIL
 ON SURFACE - ~~BELOW~~ ON _____
 LEFT - ☉ PAV'T - ~~RIGHT~~ 4.2'
 _____ TO _____ EDGE PAVEMENT
 S.L.M. 831+55.75



Grid: Northing: 725199.799 Easting: 1351692.870

NOTE:
 REF 8, US 20
 STA.135+49

SET P.K.NAIL
 8/24/90, DC

FD P.K.NAIL
 AT SURFACE
 GPS, REF35
 2/8/11

