

O.D.O.T. DISTRICT 2 SURVEY OFFICE (USE ONLY)

PERSONNEL

REFERENCE NO. 38

SHEET 1 OF 11

NOTES RHOADES DATE 7/28/22
 H.C. RHOADES WEATHER CLOUDY
 R.C. WHITAKER TEMP. 76°

ROUTE SR 49
 COUNTY WILLIAMS
 TOWNSHIP NORTHWEST
 SECTION 34
 T 9 N R 4 W

DWG BY RHOADES PID PAVETRAIN

TYPE MONUMENT P.K./WASHER

ON SURFACE - ~~BELOW~~ ON

OFFSET CL PAVEMENT 0.6' ~~LT~~ : RT

11' TO RT EDGE PAVEMENT

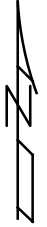
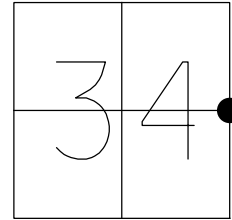
STATION: 882+29

HORIZ.DATUM: NAD83 2011

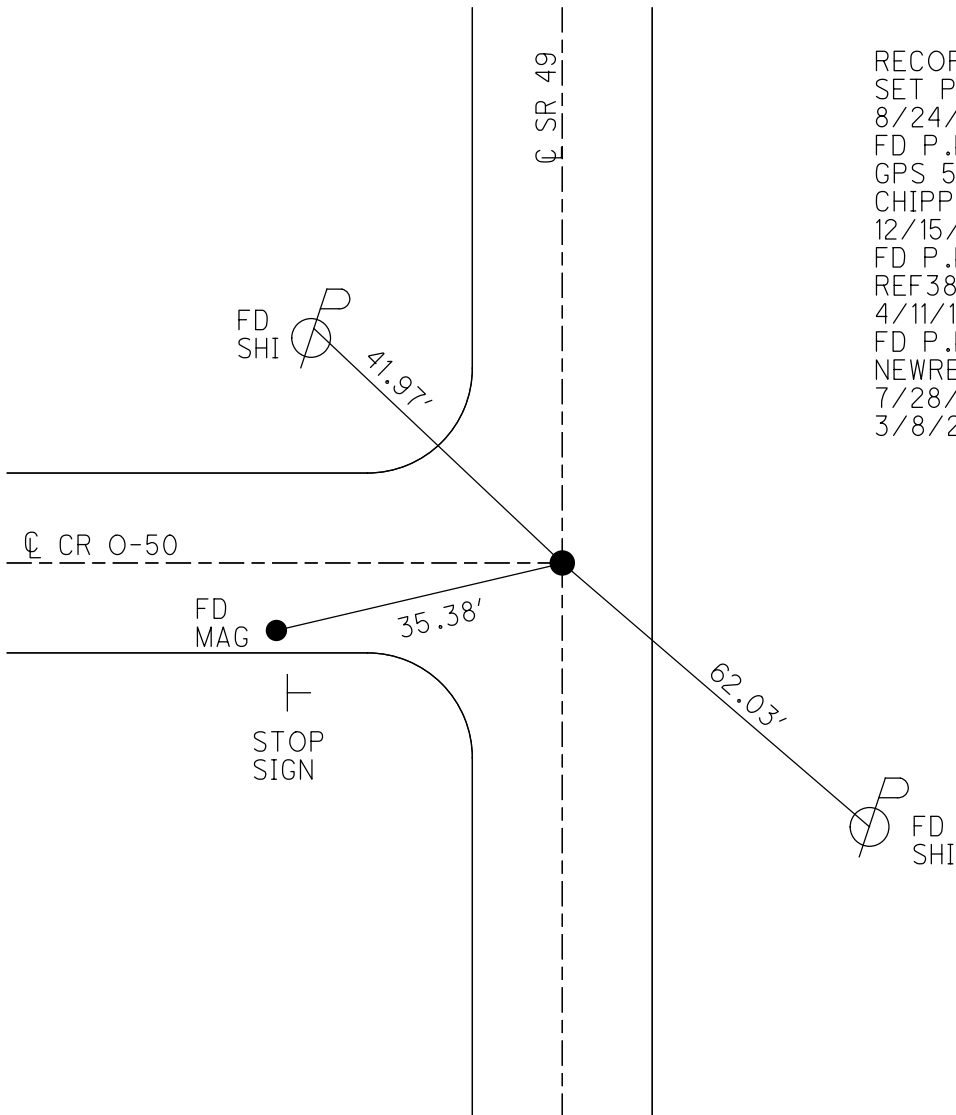
GEOID: NAVD88 2018

GRID: NORTHING: 727816.560

EASTING: 1354361.173



RECORD:
 SET P.K./WASHER
 8/24/00, MDB
 FD P.K./WASHER
 GPS 5/17/10, MC
 CHIPPED OUT POINT
 12/15/10, MC
 FD P.K./WASHER
 REF38
 4/11/16, JFO
 FD P.K./WASHER
 NEWREF38
 7/28/22,
 3/8/23, JMR

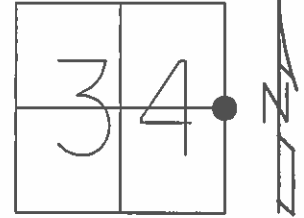


O.D.O.T. DISTRICT 2 SURVEY OFFICE (USE ONLY)

PERSONNEL _____ REFERENCE NO. 38 SHEET 1 OF 11

NOTES O'DONNELL _____ DATE 4/11/16 ROUTE SR 49
 H.C. HOMAN _____ WEATHER CLOUDY COUNTY WILLIAMS
 R.C. O'DONNELL _____ TEMP. 51° TOWNSHIP NORTHWEST
 _____ SECTION 34
 _____ T 9 N R 4 W

TYPE MONUMENT P.K./WASHER
 ON SURFACE - ~~BELOW~~ ON _____
~~LEFT~~ - Q PAV'T - RIGHT 0.6'
11.0' TO RT EDGE PAVEMENT
 S.L.M. 882+29



GRID: NORTHING: 727816.531 EASTING: 1354361.112

RECORD:
 SET P.K./WASHER
 8/24/00, MDB
 FD P.K./WASHER
 GPS 5/17/10, MC
 CHIPPED OUT POINT
 12/15/10, MC
 FD P.K./WASHER
 REF38
 4/11/16, JFO

