

O.D.O.T. DISTRICT 2 SURVEY OFFICE (USE ONLY)

PERSONNEL

REFERENCE NO. 2

SHEET 2 OF 4

NOTES RHOADES
 H.C. O'DONNELL
 R.C. MILLER

DATE 3/22/19
 WEATHER WINDY
 TEMP. 36°

ROUTE SR 66
 COUNTY WILLIAMS
 TOWNSHIP SPRINGFIELD
 SECTION 36
 T 6 N R 4 E

DWG BY NIESE PID 101344

TYPE MONUMENT MAG/WASHER

ON SURFACE - ~~BELOW~~ ON

OFFSET \varnothing PAVEMENT ON LT : RT

13.1 TO RT EDGE PAVEMENT

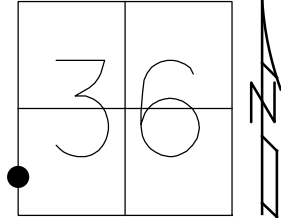
STATION: 13+19

HORZ.DATUM: NAD83(2011)

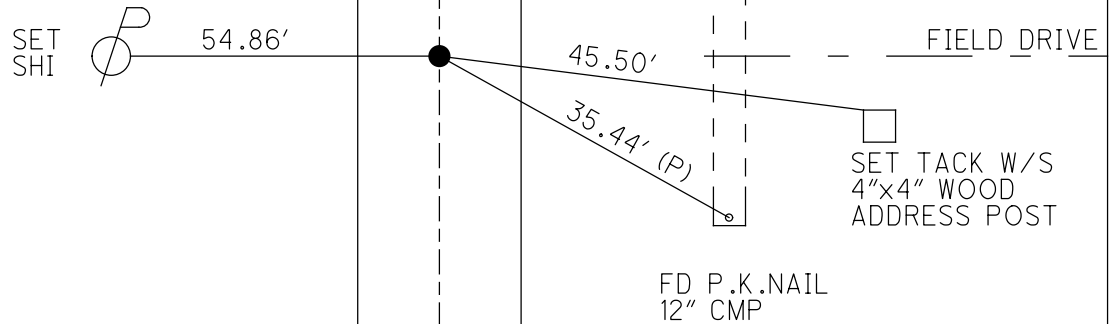
GEOID: 2012A

GRID: NORTHING: 648312.805

EASTING: 1458222.029



RECORD: P.O.T.
 1961 PLAN:
 STA 13+00
 SET SM.R.R.SPIKE
 6-24-85, SWH
 FD SM.R.R.SPIKE
 ATOP P.K.NAIL
 5/10/99, MB
 SET P.K./WASHER
 10-22-99, MDB
 D.N.F.
 4/2/18, JFO
 SET MAG/WASHER
 NEWREF2
 3-22-19, JFO



O.D.O.T. DISTRICT 2 SURVEY OFFICE

PERSONNEL

REFERENCE NO. 2

SHEET 2 OF 4

NOTES CANTERBURY

H.C. ROUSOS

R.C. BARNISEL

DATE 5/10/99

WEATHER FAIR

TEMP. +75°

ROUTE SR 66

COUNTY Williams

TOWNSHIP Springfield

SECTION 36

T6 NR 4 E

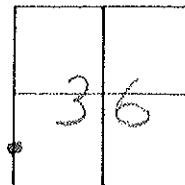
TYPE MONUMENT Sm. R.R. SPK ATOP P.K. NAIL

ON SURFACE - ~~BELOW~~ AT SURFACE

~~LEFT - & PAV'T. - RIGHT~~ & PAVT.

13.1 TO RT. EDGE PAVEMENT

S.L.M. 13+19 SLM / 0+403.048 SLK



1961 Plan:
P.O.T. Sta. 13+00

Small RR spk. set
6-24-85
SWH

RESET P.K./WASHER

10-22-99 M.D.B

