

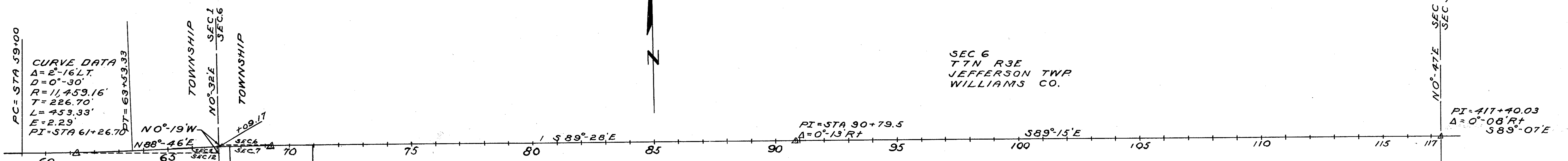
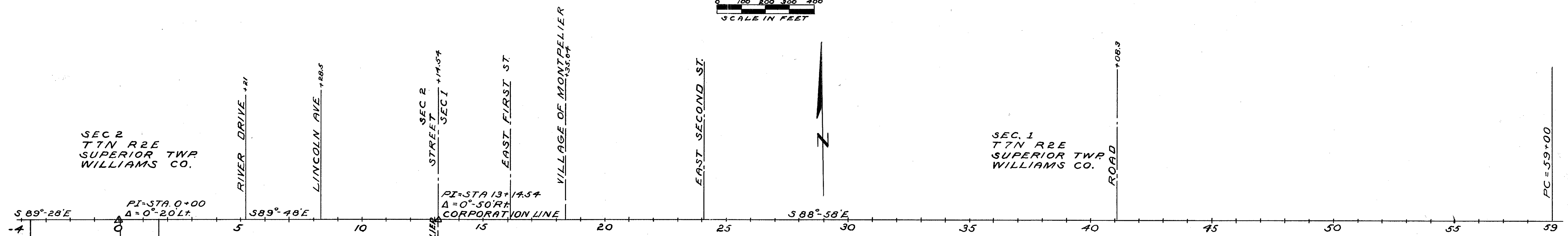
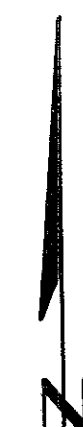
# LOCATION PLAN

## WIL20-A 4.64, 4.89, 5.43, 5.75

# WEST UNITY-MONTPELIER ROAD

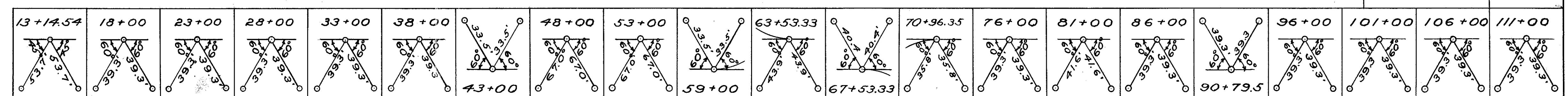
## DEPARTMENT OF HIGHWAYS - STATE OF OHIO

### 1949



**CURVE DATA**  
 $\Delta = 2^{\circ}-16'LT$   
 $D = 0^{\circ}-30'$   
 $R = 11,459.16'$   
 $T = 226.70'$   
 $L = 453.33'$   
 $E = 2.29'$   
 $PI = STA 61+26.70$   
 $DT = 69+53.33$

**CURVE DATA**  
 $\Delta = 1^{\circ}-46'RT$   
 $D = 0^{\circ}-30'-54"$   
 $R = 11,124.66'$   
 $T = 171.52'$   
 $L = 343.02'$   
 $E = 1.33'$   
 $PI = 69+248.5$



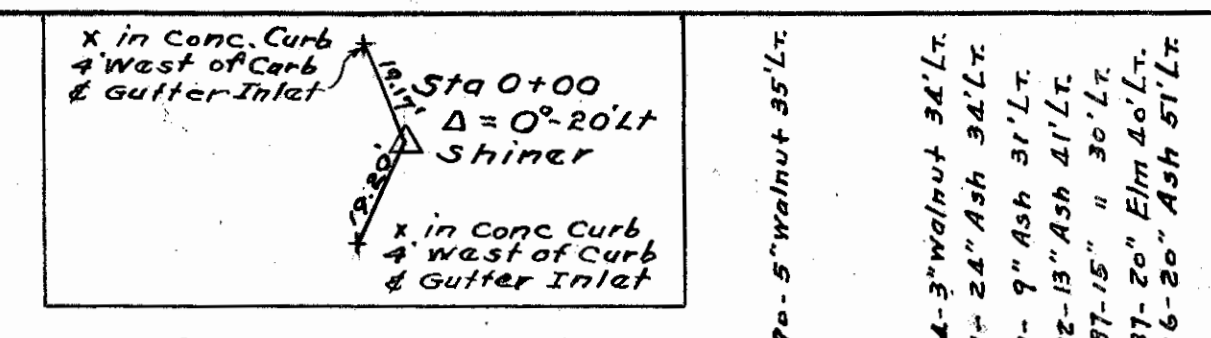
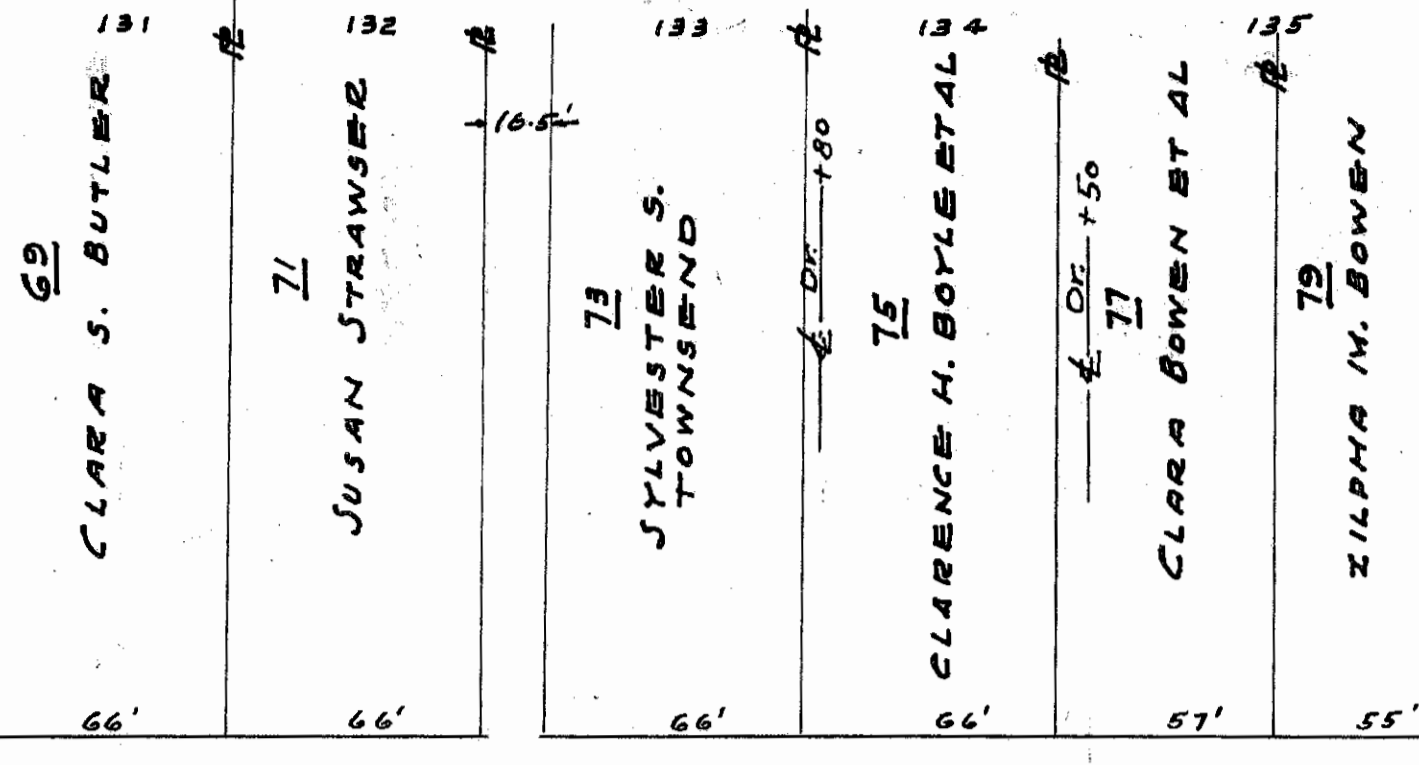
R7107 45 A-38

Scanned July 1977

SEC. 2 SUPERIOR TWP. T. 7N. R. 2E VILLAGE OF MONTEPELIER

**WILLIAMS COUNTY**  
 WIL 20A SECS. 4, 6A, 4, 8, 9, 5, 43, 5, 74  
**R/L PLANS**  
 DATE 2-10-49, 4-5-49 DRAWN BY R.P. & J.S.  
 REVISED 5/3/49  
 LENGTH OF PROJECT 2.211 Miles

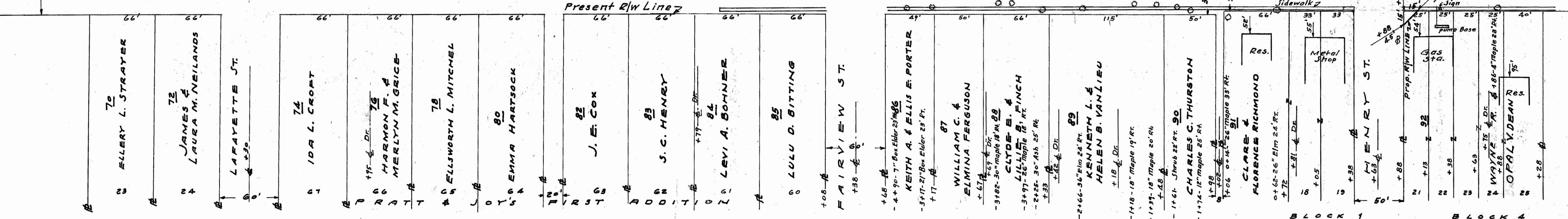
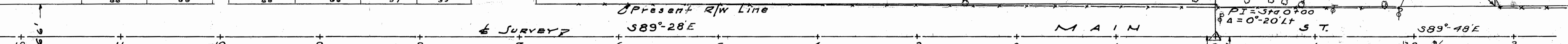
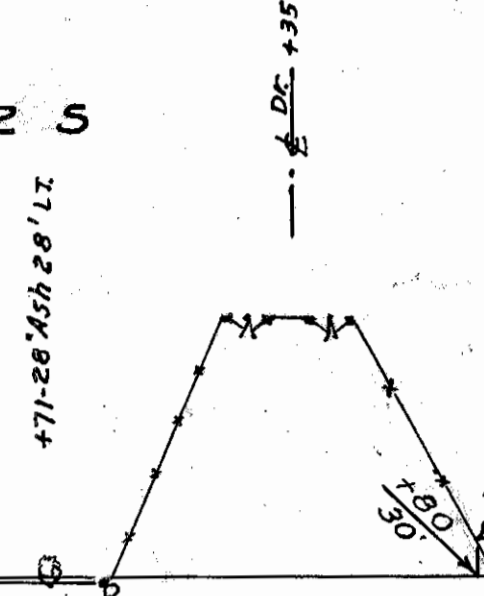
SNYDER'S THIRD ADDITION



WILLIAMS COUNTY COMMISSIONERS

UTILITIES  
 TELEPHONE POLES - OHIO ASSOCIATED TELEPHONE CO., MARION OHIO.  
 LIGHT POLES - VILLAGE OF MONTEPELIER TO VIADUCT.  
 LIGHT POLES - FROM VIADUCT EAST, THE TOLEDO EDISON CO. LOCAL OFFICE AT WAUSEON, OHIO.

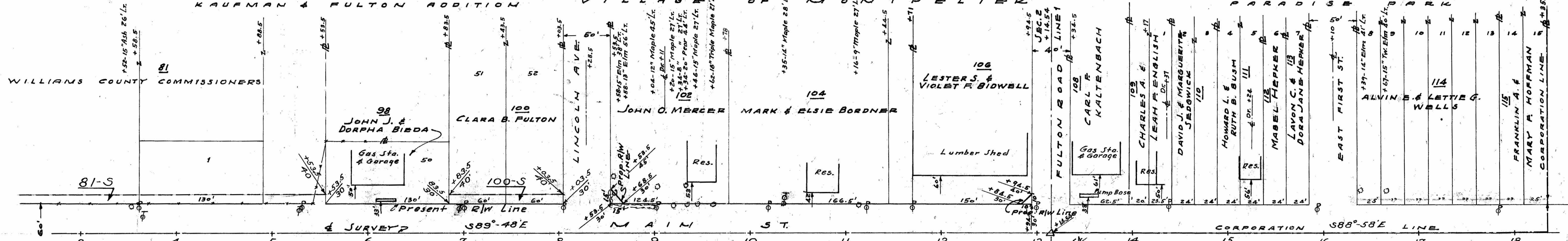
BEGIN PROJECT J+0.0+00



VILLAGE OF MONTEPELIER SEC. 11 SUPERIOR TWP. T. 7N. R. 2E

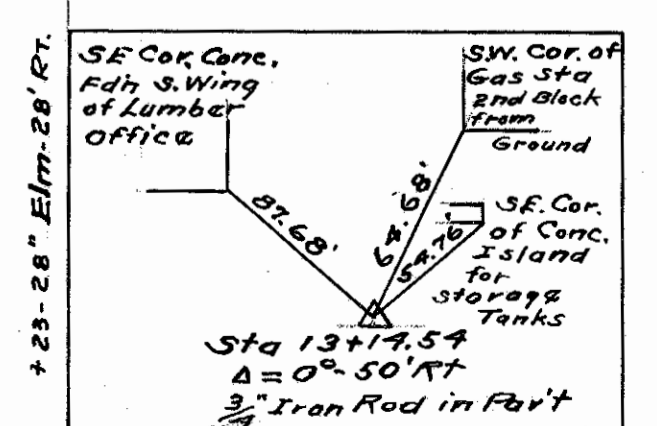
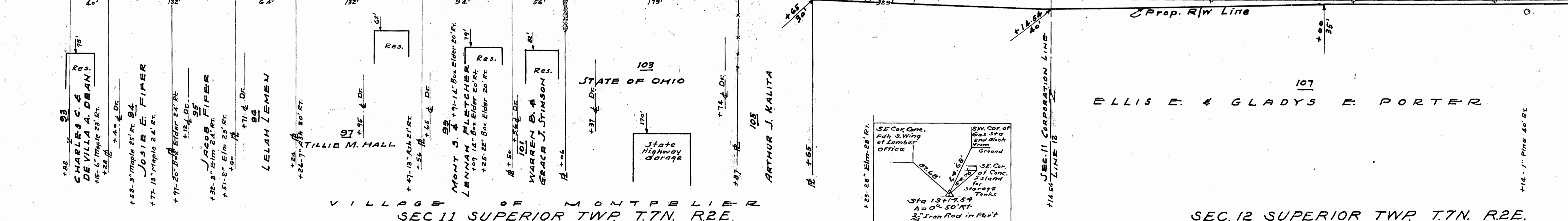
SEC. 2 SUPERIOR TWP. T. 7N. R. 2E VILLAGE OF MONTEPELIER

SEC. 1 SUPERIOR TWP. T. 7N. R. 2E PARADISE PARK



VILLAGE OF MONTEPELIER SEC. 11 SUPERIOR TWP. T. 7N. R. 2E

SEC. 12 SUPERIOR TWP. T. 7N. R. 2E

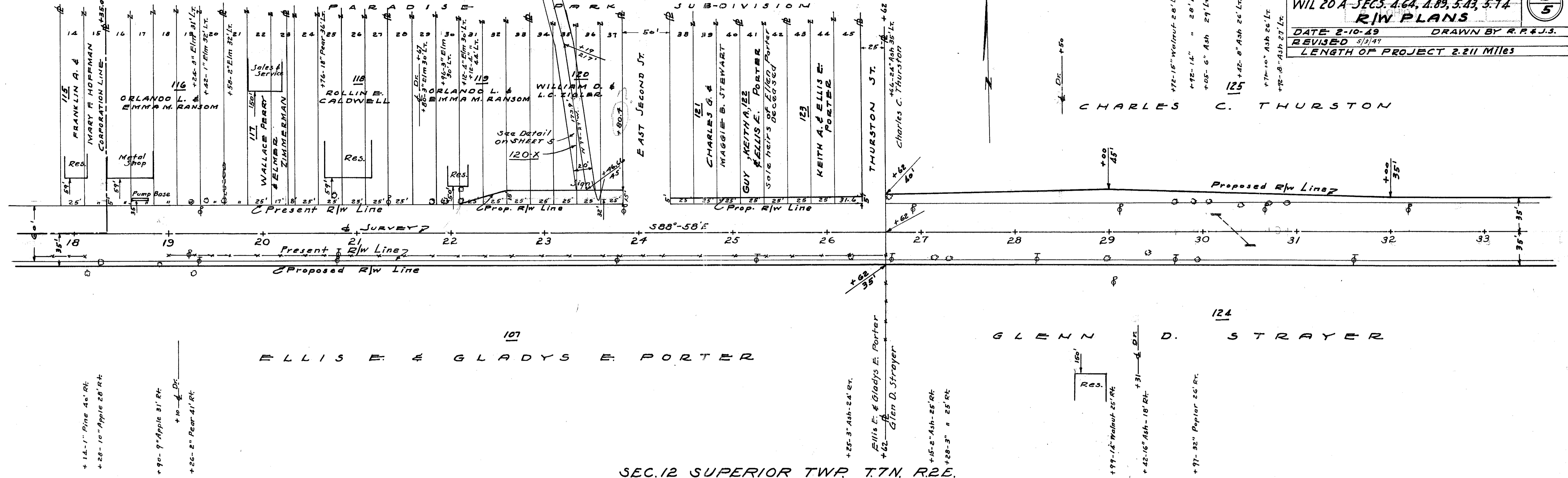


SEC. 1 SUPERIOR TWP. T.7N. R.2E.

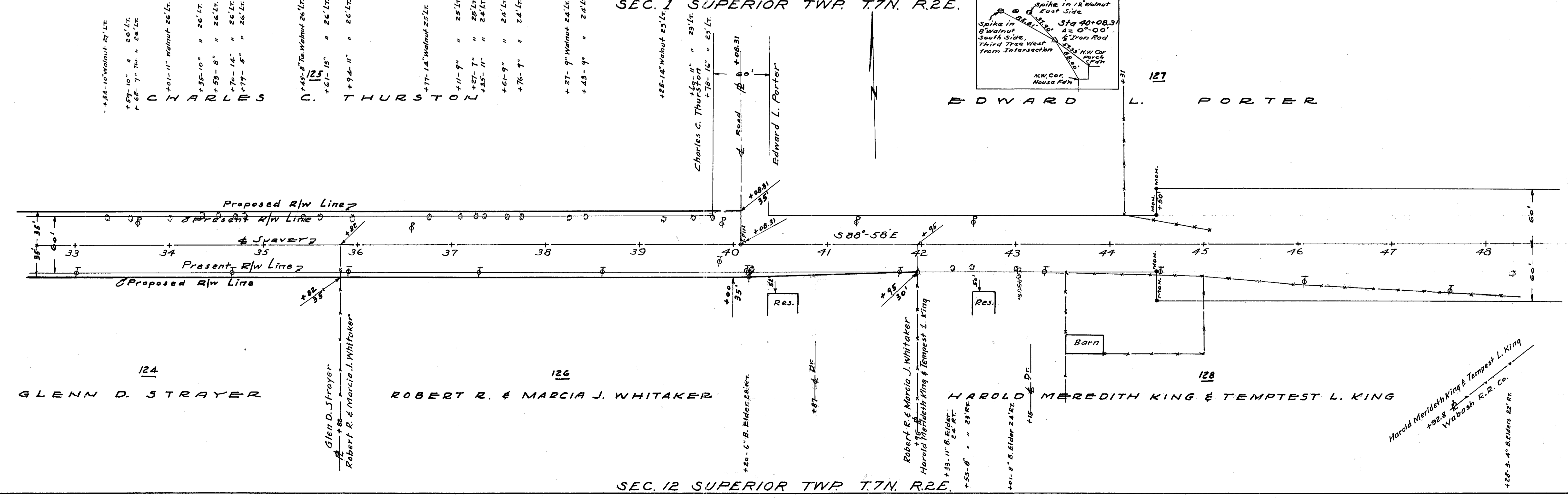
**WILLIAMS COUNTY**  
 WIL 20 A-SECS. 4, 64, 4, 89, 5, 43, 5, 74  
**R/W PLANS**

DATE 2-10-49 DRAWN BY R. P. & J. S.  
 REVISED 5/13/49  
 LENGTH OF PROJECT 2.211 Miles

2  
5



SEC. 12 SUPERIOR TWP. T.7N. R.2E.



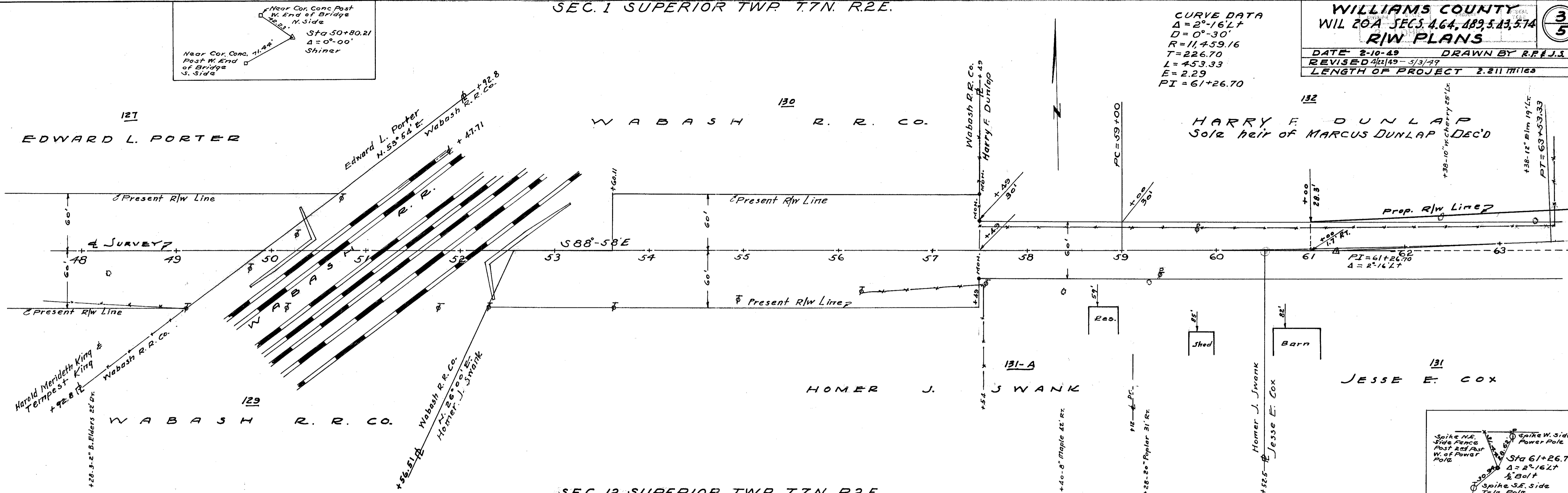
SEC. 12 SUPERIOR TWP. T.7N. R.2E.

Scanned July 1997

SEC. 1 SUPERIOR TWP. T.7N. R.2E.

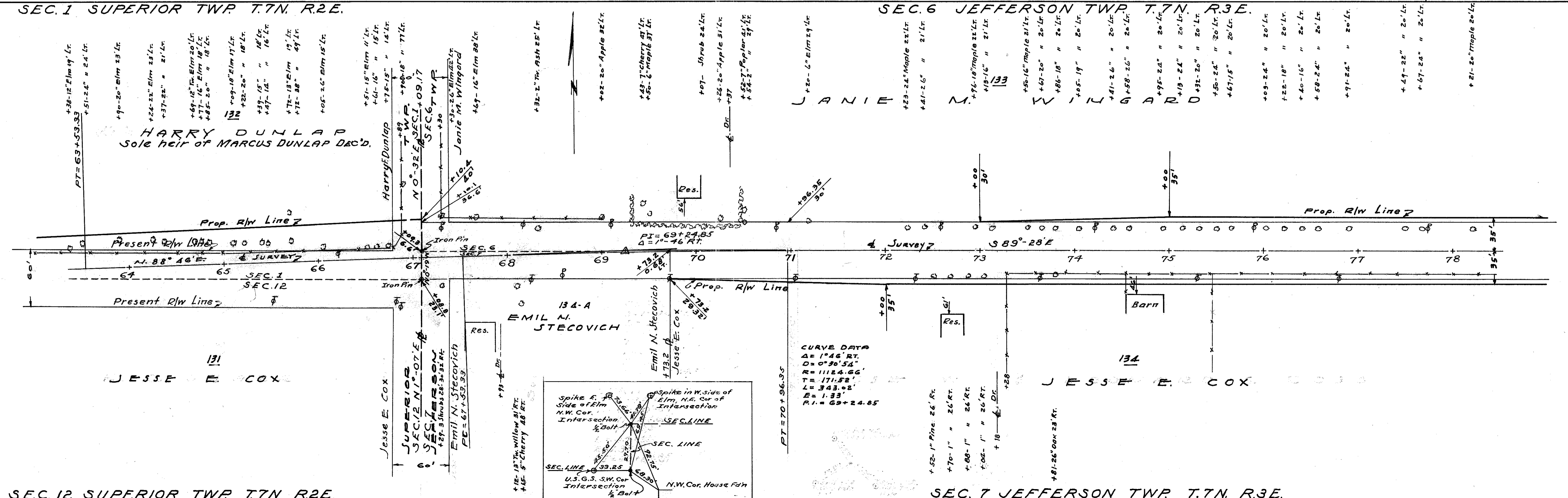
WILLIAMS COUNTY  
WIL 20A SECS. 4, 6, 48, 5, 13, 5, 14  
R/W PLANS  
DATE 2-10-49 DRAWN BY R.F.E.J.S.  
REVISED 4/21/49-5/3/49  
LENGTH OF PROJECT 2.211 miles

CURVE DATA  
Δ = 2° 16' 27"  
D = 0° 30'  
R = 11,759.16  
T = 226.70  
L = 453.33  
E = 2.29  
PI = 61+26.70

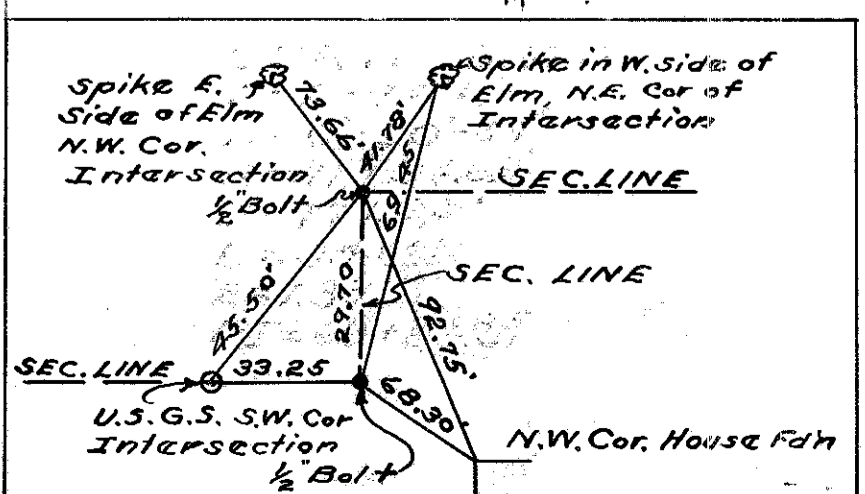


SEC. 12 SUPERIOR TWP. T.7N. R.2E.

SEC. 6 JEFFERSON TWP. T.7N. R.3E.



CURVE DATA  
Δ = 1° 46' RT.  
D = 0° 30' 54"  
R = 11124.66'  
T = 171.52'  
L = 343.02'  
E = 1.93'  
PI = 69+24.85



SEC. 12 SUPERIOR TWP. T.7N. R.2E.

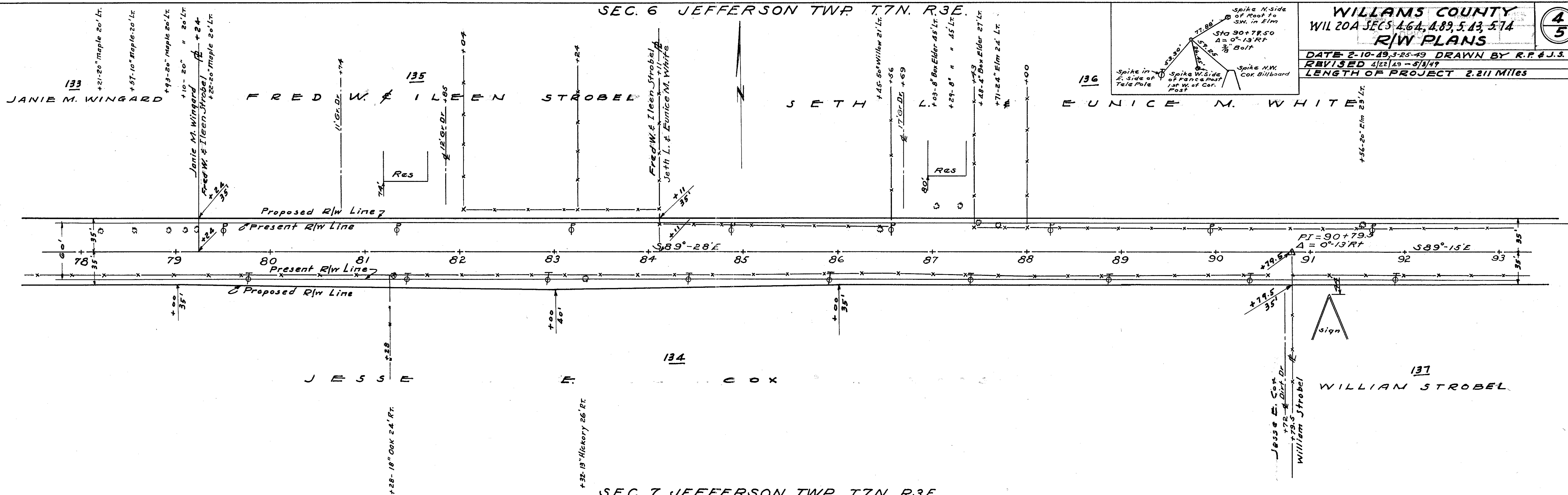
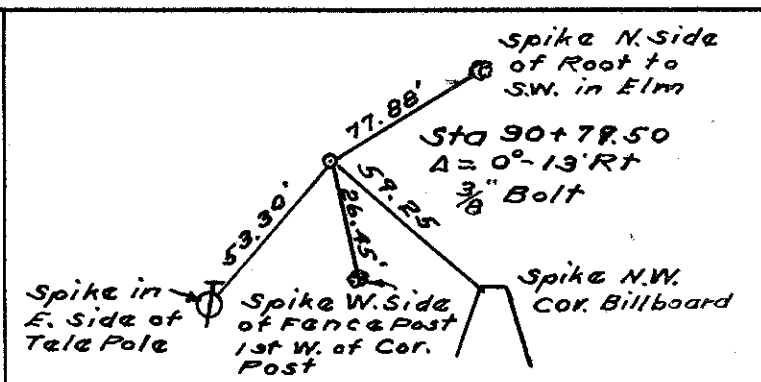
SEC. 7 JEFFERSON TWP. T.7N. R.3E.

Revised July 1977

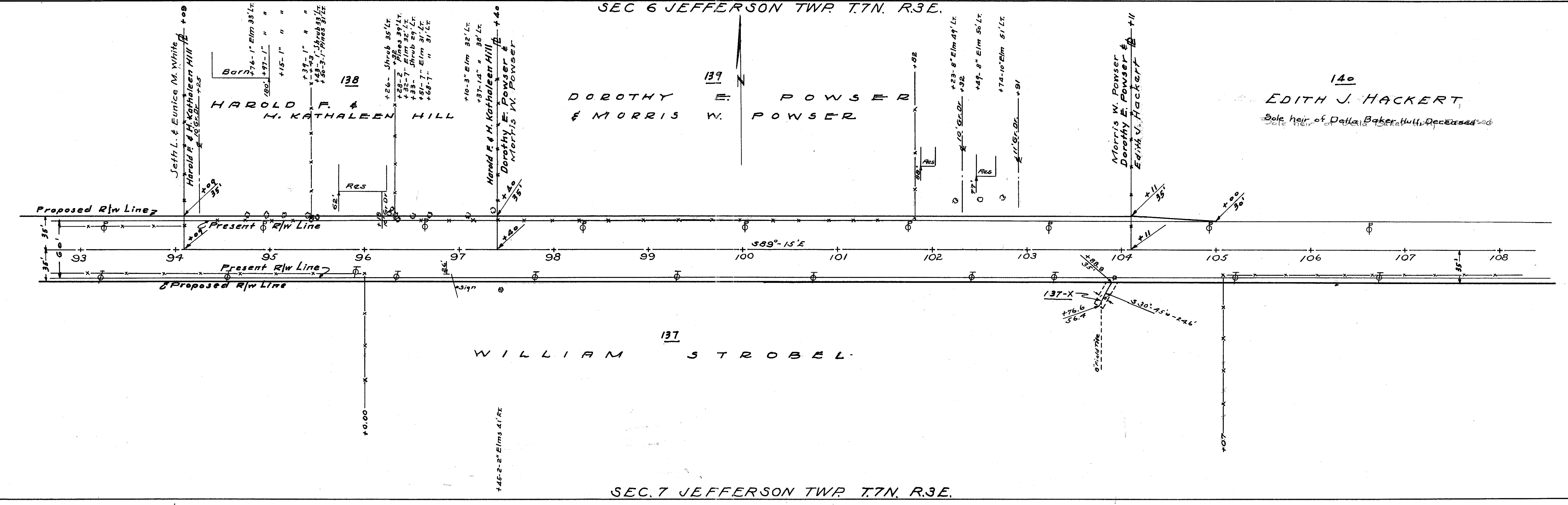
SEC. 6 JEFFERSON TWP. T.7N. R.3E.

WILLIAMS COUNTY  
WIL 20A SECS 4, 6, 4, 8, 9, 5, 13, 5, 14  
R/W PLANS

DATE 2-10-49, 3-25-49 DRAWN BY R.F. & J.S.  
REVISED 4/22/49 - 5/1/49  
LENGTH OF PROJECT 2.211 Miles



SEC. 7 JEFFERSON TWP. T.7N. R.3E.  
SEC. 6 JEFFERSON TWP. T.7N. R.3E.



SEC. 7 JEFFERSON TWP. T.7N. R.3E.

Examined  
July 1997

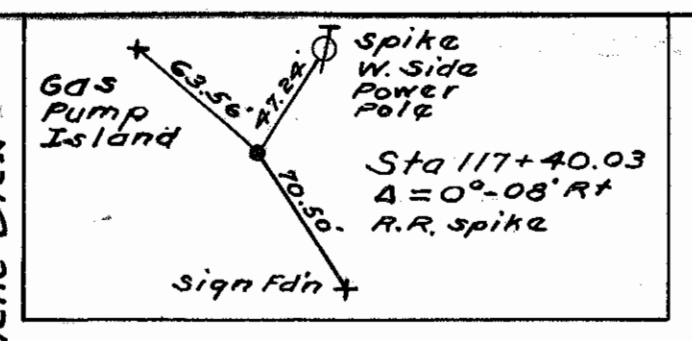
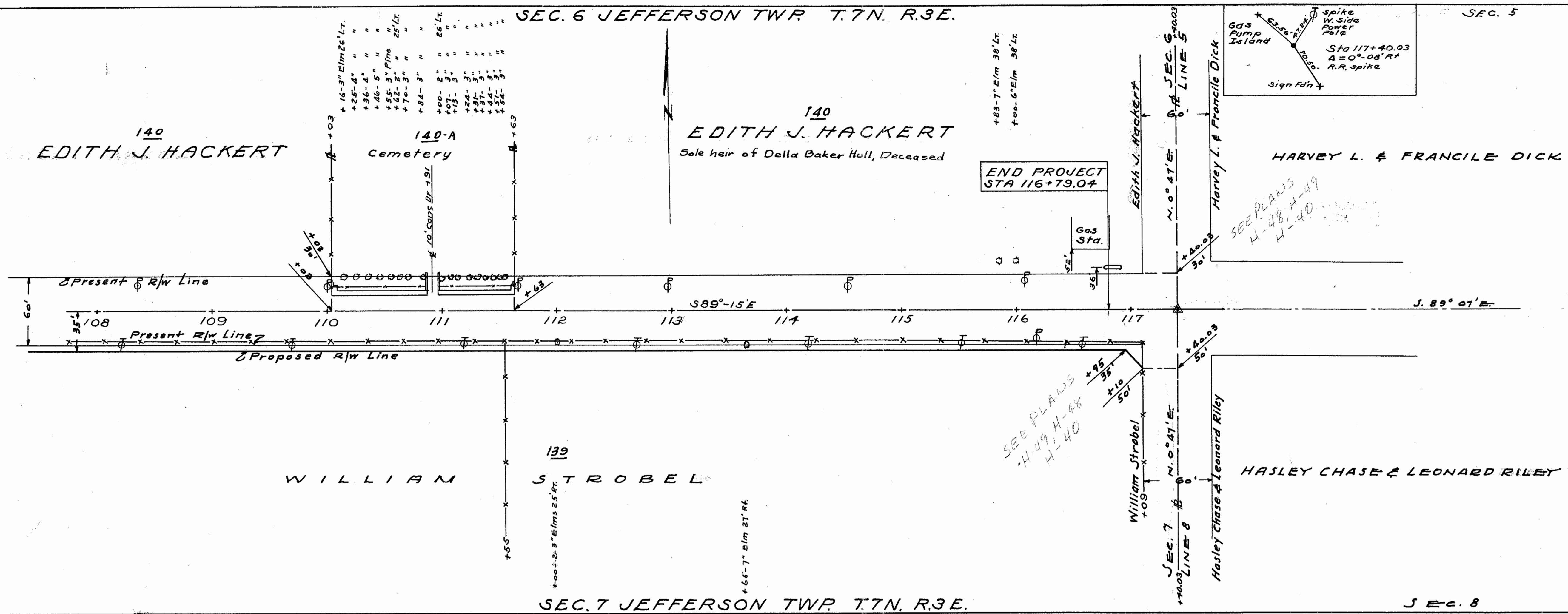
SEC. 6 JEFFERSON TWP. T.7N. R.3E.

SEC. 5

**WILLIAMS COUNTY**  
 WIL 20A SECS. 4, 6, 7, 8, 9, 5, 7, 4  
**R/W PLANS**

DATE 2-10-49 DRAWN BY RRP & J.S.  
 REVISED 5/5/49  
 LENGTH OF PROJECT 2.211 Miles

5  
5



SEE PLANS  
H-48, H-49  
H-40

SEC. 7 JEFFERSON TWP. T.7N. R.3E.

SEC. 8

