

O.D.O.T. DISTRICT 2 SURVEY OFFICE (USE ONLY)

PERSONNEL

REFERENCE NO. 1

SHEET 1 OF 16

NOTES RHOADES
 H.C. O'DONNELL
 R.C. RHOADES

DATE 9/27/18
 WEATHER CLOUDY
 TEMP. 50°

ROUTE SR 107
 COUNTY WILLIAMS
 TOWNSHIP FLORENCE
 SECTION 5

DWG BY NIESE PID 105474

T 7 N R 1 E

TYPE MONUMENT MAG/WASHER

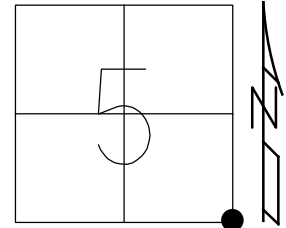
ON SURFACE - ~~BELOW~~ ON

OFFSET Q PAVEMENT ON LT : ~~RT~~
9.7' TO LT EDGE PAVEMENT 1.3' Q OF SR 49

STATION: 0+00

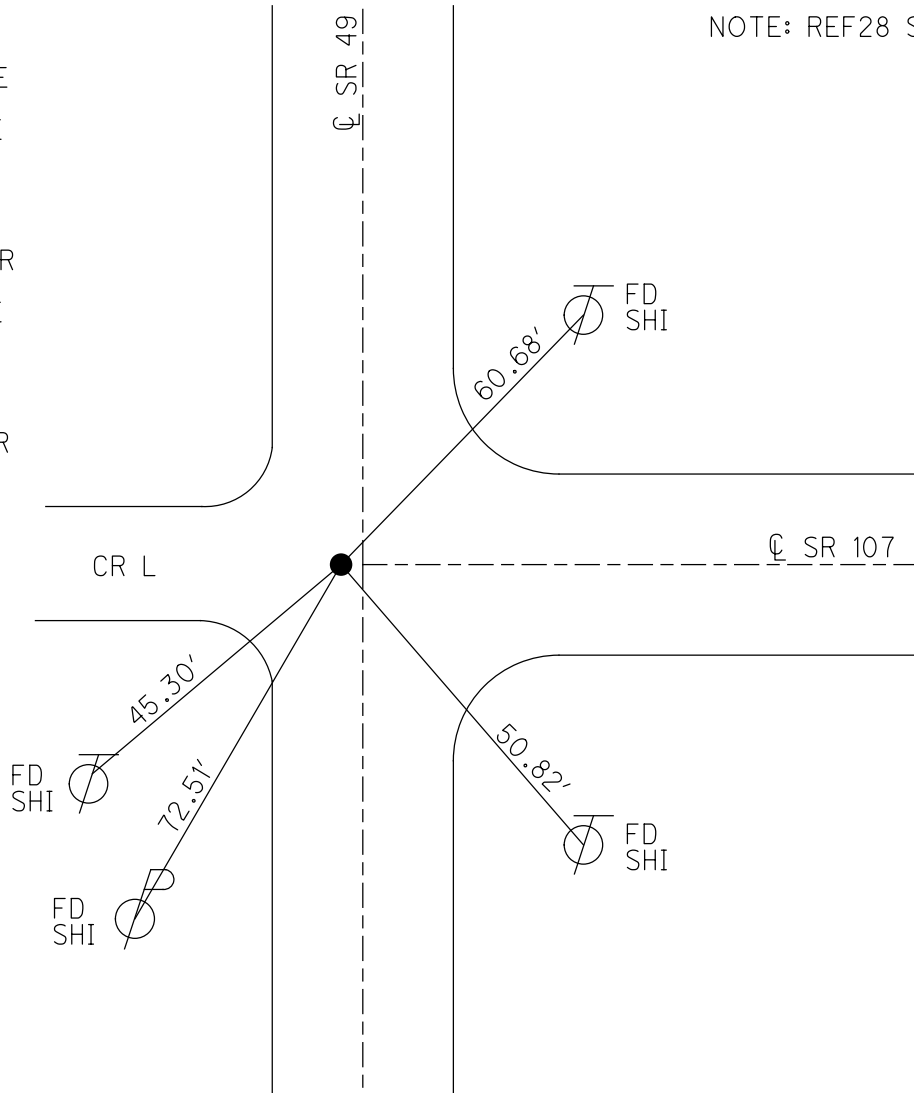
HORZ. DATUM: - GEOID: -

GRID: NORTHING: 707113.843 EASTING: 1347791.591



- RECORD:
 SET SM RR SPIKE
 5-23-85, CL
 FD SM.R.R.SPIKE
 4/25/88, DC
 FD 1" IPIPE
 2" BELOW
 5/20/97, MB
 SET P.K./WASHER
 10-02-97, MB
 FD SM.R.R.SPIKE
 REF28
 2/7/11, MB
 0.35' DOWN
 5/10/12, MC
 SET MAG/WASHER
 9/11/12, SAH
 FD MAG/WASHER
 REF1
 6-17-14
 12/31/14, EBW
 FD MAG/WASHER
 9/18/19, JMR

NOTE: REF28 SR 49



O.D.O.T. DISTRICT 2 SURVEY OFFICE (USE ONLY)

PERSONNEL

REFERENCE NO. 2

SHEET 2 OF 16

NOTES RHOADES

DATE 9/27/18

ROUTE SR 107

H.C. O'DONNELL

WEATHER CLOUDY

COUNTY WILLIAMS

R.C. RHOADES

TEMP. 51°

TOWNSHIP FLORENCE

SECTION 4

DWG BY NIESE PID 105474

T 7 N R 1 E

TYPE MONUMENT MAG/WASHER

ON SURFACE - ~~BELOW~~ ON

OFFSET 0.3' LT : ~~RT~~

9.7' TO LT EDGE PAVEMENT

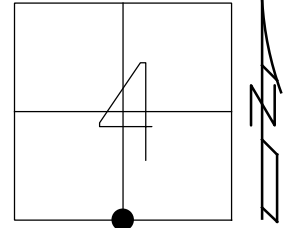
STATION: 26+48

HORZ. DATUM: NAD83(2011)

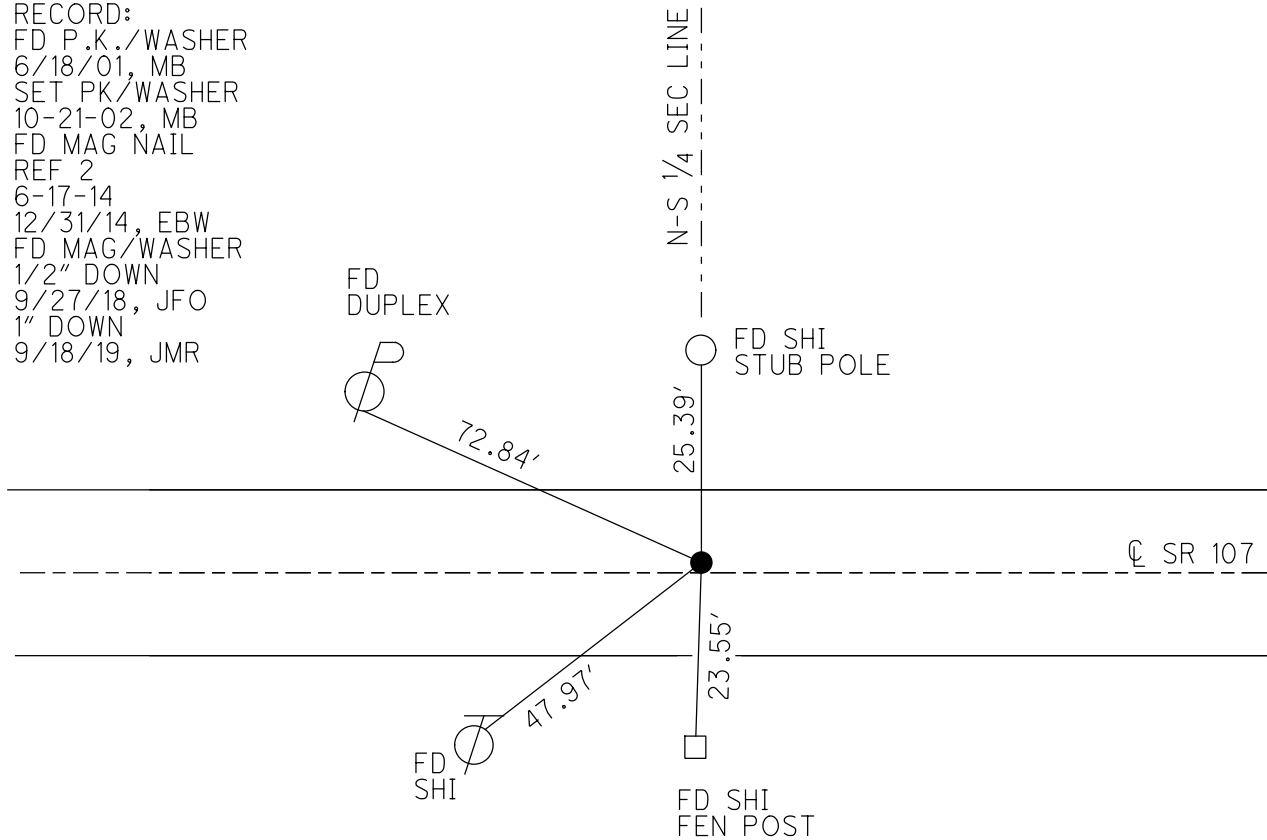
GEOID: 2012A

GRID: NORTHING: 707060.992

EASTING: 1350442.108



RECORD:
 FD P.K./WASHER
 6/18/01, MB
 SET PK/WASHER
 10-21-02, MB
 FD MAG NAIL
 REF 2
 6-17-14
 12/31/14, EBW
 FD MAG/WASHER
 1/2" DOWN
 9/27/18, JFO
 1" DOWN
 9/18/19, JMR



O.D.O.T. DISTRICT 2 SURVEY OFFICE (USE ONLY)

PERSONNEL _____

REFERENCE NO. 3

SHEET 3 OF 16

NOTES RHOADES

DATE 9/27/18

ROUTE SR 107

H.C. O'DONNELL

WEATHER CLOUDY

COUNTY WILLIAMS

R.C. RHOADES

TEMP. 51°

TOWNSHIP FLORENCE

SECTION 4

DWG BY NIESE PID 105474

T 7 N R 1 E

TYPE MONUMENT P.K./WASHER

ON SURFACE - ~~BELOW~~ ON

OFFSET ☉ PAVEMENT ON _____ LT : RT

- TO - EDGE PAVEMENT

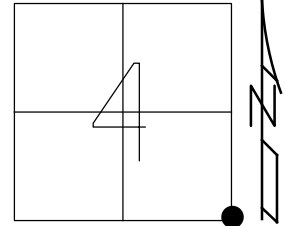
STATION: 53+03

HORZ.DATUM: -

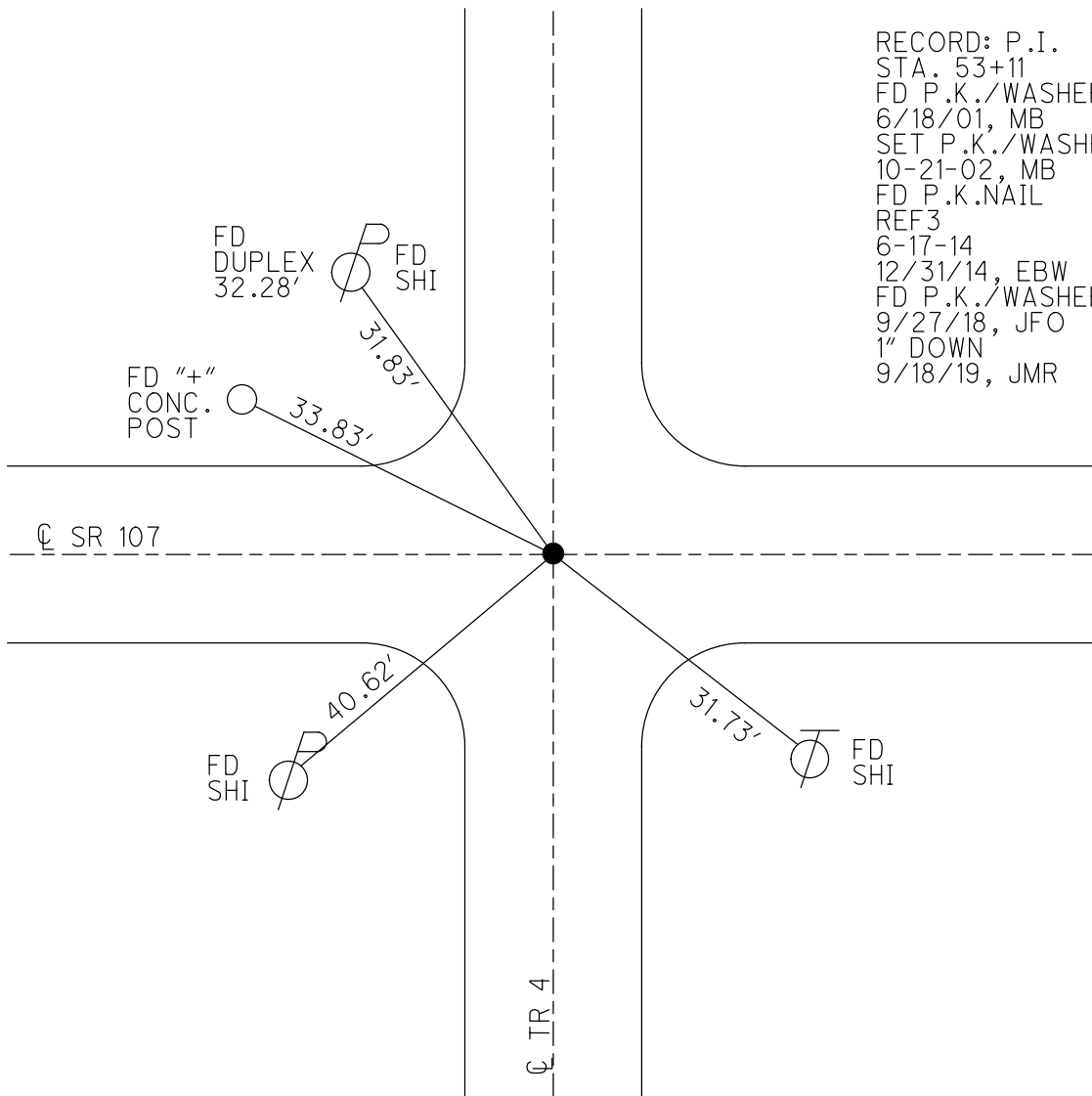
GEOID: -

GRID: NORTHING: 706999.881

EASTING: 1353101.147



RECORD: P.I.
 STA. 53+11
 FD P.K./WASHER
 6/18/01, MB
 SET P.K./WASHER
 10-21-02, MB
 FD P.K.NAIL
 REF3
 6-17-14
 12/31/14, EBW
 FD P.K./WASHER
 9/27/18, JFO
 1" DOWN
 9/18/19, JMR

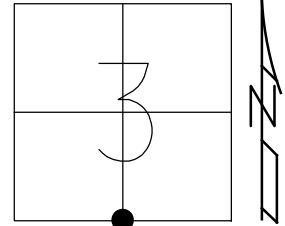


O.D.O.T. DISTRICT 2 SURVEY OFFICE (USE ONLY)

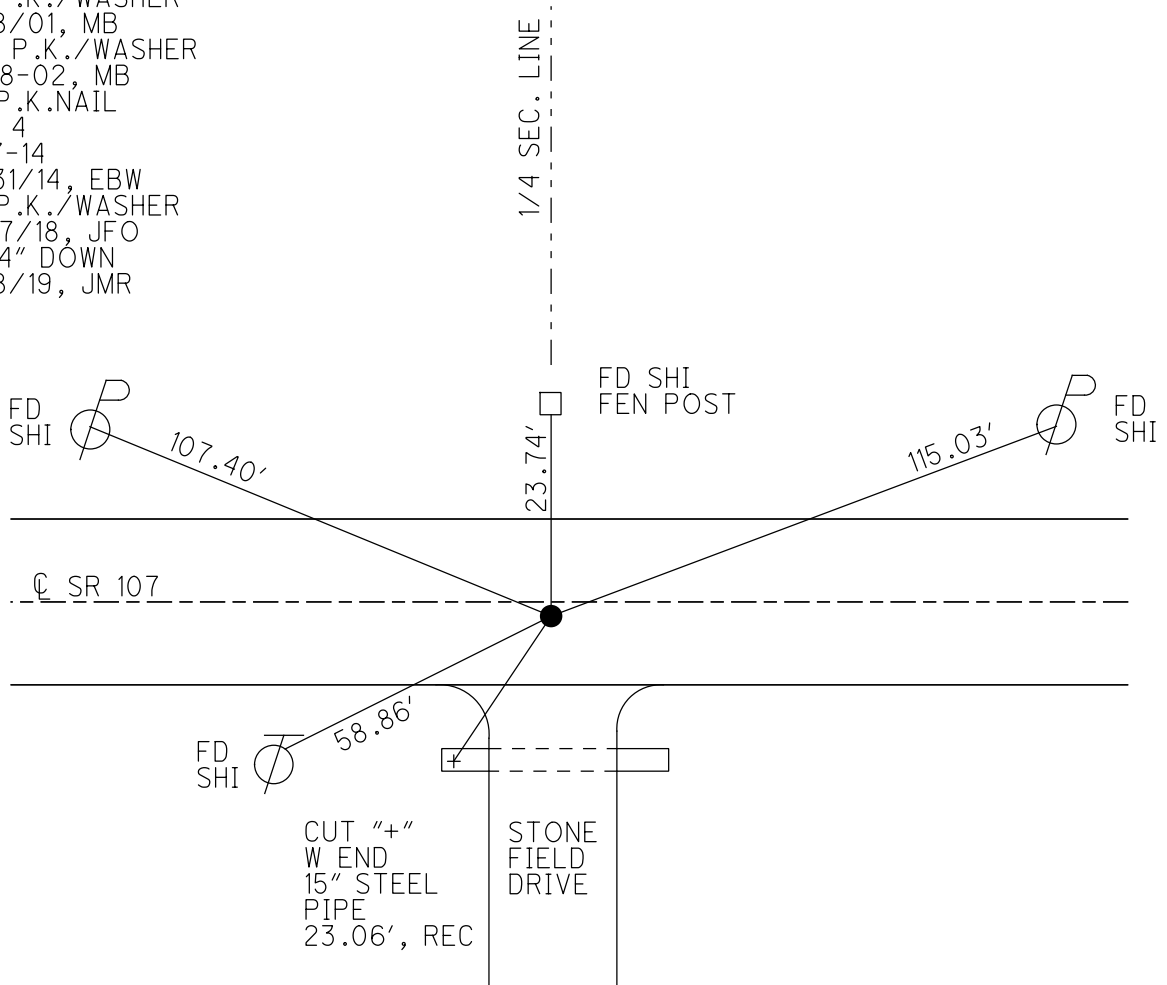
PERSONNEL _____ REFERENCE NO. 4 SHEET 4 OF 16
 NOTES RHOADES DATE 9/27/18 ROUTE SR 107
 H.C. O'DONNELL WEATHER CLOUDY COUNTY WILLIAMS
 R.C. RHOADES TEMP. 52° TOWNSHIP FLORENCE
 DWG BY NIESE PID 105474 SECTION 3
 T 7 N R 1 E

TYPE MONUMENT P.K./WASHER
 ON SURFACE - ~~BELOW~~ ON
 OFFSET 0.8' ~~RT~~ : RT
9.2' TO RT EDGE PAVEMENT
 STATION: 79+50

HORZ. DATUM: - GEOID: -
 GRID: NORTHING: 706949.782 EASTING: 1355753.122



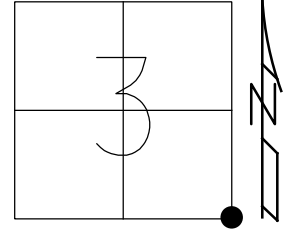
RECORD: P.I.
 STA. 79+63.8
 FD P.K./WASHER
 6/18/01, MB
 SET P.K./WASHER
 10-18-02, MB
 FD P.K.NAIL
 REF 4
 6-17-14
 12/31/14, EBW
 FD P.K./WASHER
 9/27/18, JFO
 1 1/4" DOWN
 9/18/19, JMR



O.D.O.T. DISTRICT 2 SURVEY OFFICE (USE ONLY)

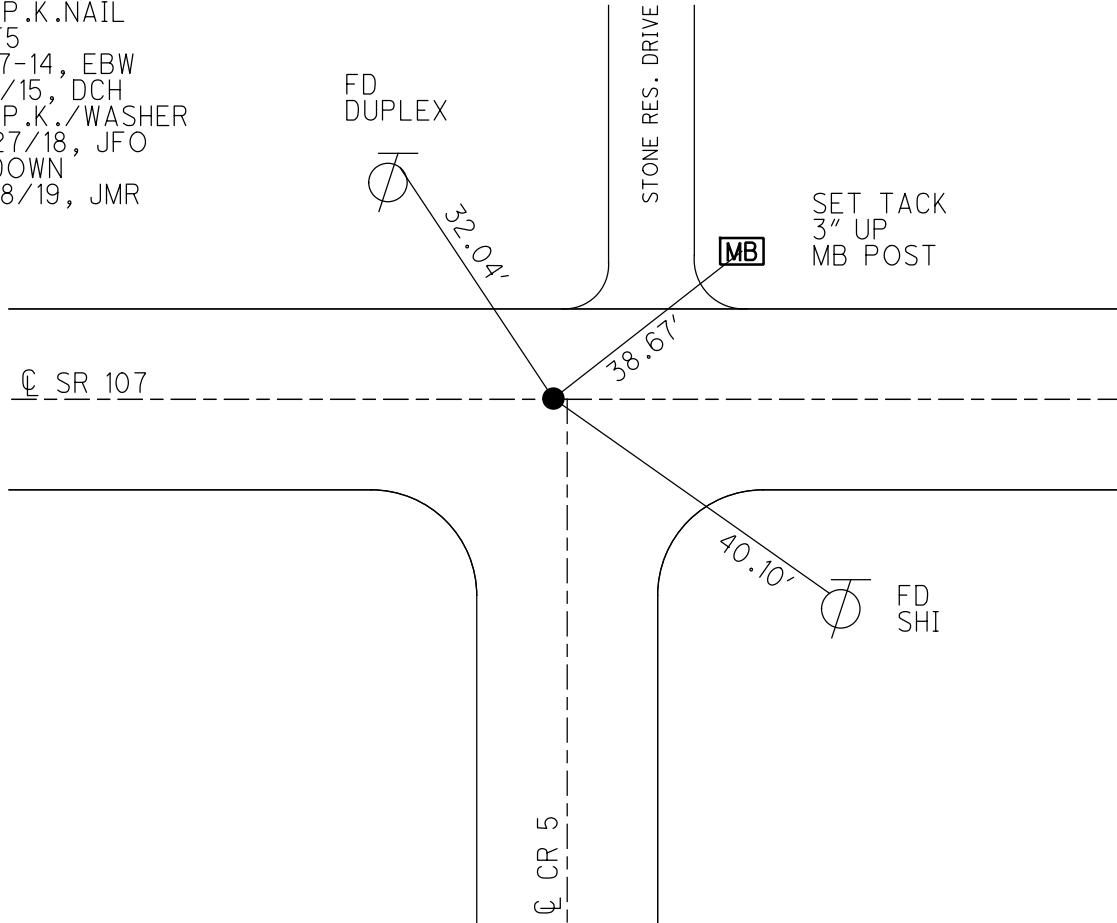
PERSONNEL _____ REFERENCE NO. 5 SHEET 5 OF 16
 NOTES RHOADES DATE 9/27/18 ROUTE SR 107
 H.C. O'DONNELL WEATHER CLOUDY COUNTY WILLIAMS
 R.C. RHOADES TEMP. 52° TOWNSHIP FLORENCE
 DWG BY NIESE PID 105474 SECTION 3
 T 7 N R 1 E

TYPE MONUMENT P.K./WASHER
 ON SURFACE - ~~BELOW~~ ON
 OFFSET Q PAVEMENT ON _____ LT : RT
10.0' TO LT EDGE PAVEMENT 1' W Q CR5
 STATION: 106+10



HORZ.DATUM: - GEOID: -
 GRID: NORTHING: 706894.947 EASTING: 1358406.088

RECORD: P.I.
 STA 106+17.45
 FD P.K./WASHER
 6/18/01, MB
 SET P.K./WASHER
 10-21-02, MB
 FD P.K.NAIL
 REF5
 6-17-14, EBW
 1/8/15, DCH
 FD P.K./WASHER
 9/27/18, JFO
 1" DOWN
 9/18/19, JMR



O.D.O.T. DISTRICT 2 SURVEY OFFICE (USE ONLY)

PERSONNEL

REFERENCE NO. 6

SHEET 6 OF 16

NOTES RHOADES

DATE 9/27/18

ROUTE SR 107

H.C. O'DONNELL

WEATHER CLOUDY

COUNTY WILLIAMS

R.C. RHOADES

TEMP. 55°

TOWNSHIP FLORENCE

DWG BY NIESE PID 105474

SECTION 2

T 7 N R 1 E

TYPE MONUMENT MAG/WASHER

ON SURFACE - ~~BELOW~~ ON

OFFSET ☉ PAVEMENT ON LT : RT

9.8' TO RT EDGE PAVEMENT

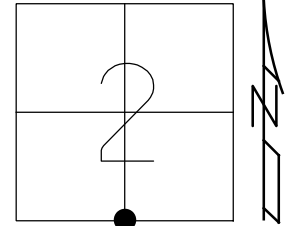
STATION: 132+52

HORZ. DATUM: -

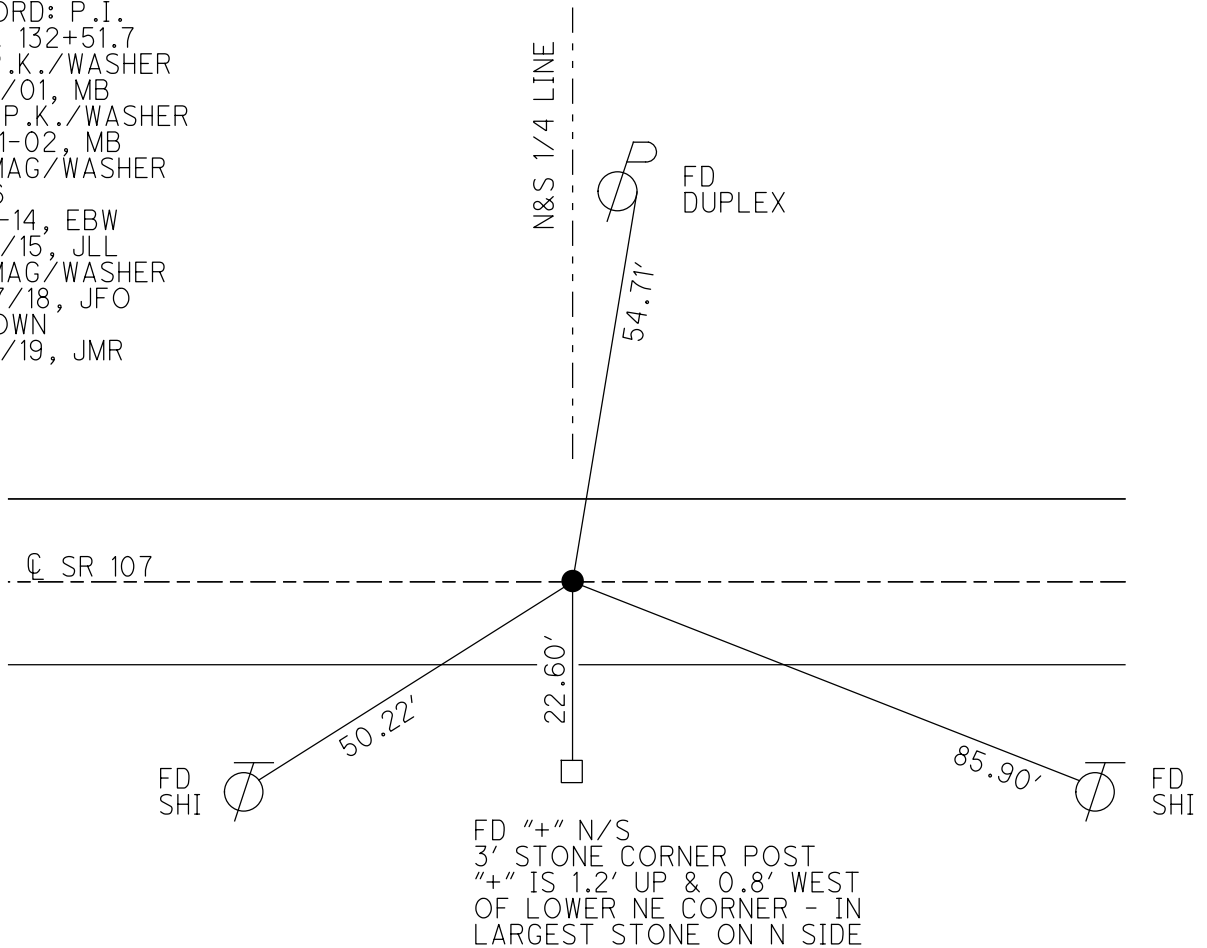
GEOID: -

GRID: NORTHING: 706849.532

EASTING: 1361040.108



RECORD: P.I.
 STA. 132+51.7
 FD P.K./WASHER
 6/18/01, MB
 SET P.K./WASHER
 10-21-02, MB
 FD MAG/WASHER
 REF6
 6-17-14, EBW
 1/26/15, JLL
 FD MAG/WASHER
 9/27/18, JFO
 1" DOWN
 9/18/19, JMR



O.D.O.T. DISTRICT 2 SURVEY OFFICE (USE ONLY)

PERSONNEL

REFERENCE NO. 7

SHEET 7 OF 16

NOTES RHOADES DATE 6/20/14
 H.C. WESTFALL WEATHER CLOUDY
 R.C. MEYER TEMP. 68°

ROUTE SR 107
 COUNTY WILLIAMS
 TOWNSHIP FLORENCE
 SECTION 2

DWG BY NIESE PID 105474

T 7 N R 1 E

TYPE MONUMENT MONBOX W/ 1" IPIN

ON SURFACE - ~~BELOW~~ ON

OFFSET \varnothing PAVEMENT 1.0' ~~LT~~ : RT

- TO - EDGE PAVEMENT

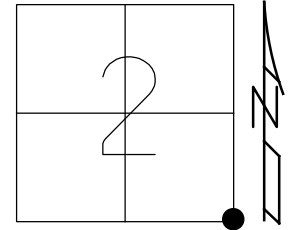
STATION: 153+80

HORZ.DATUM: NAD83(2011)

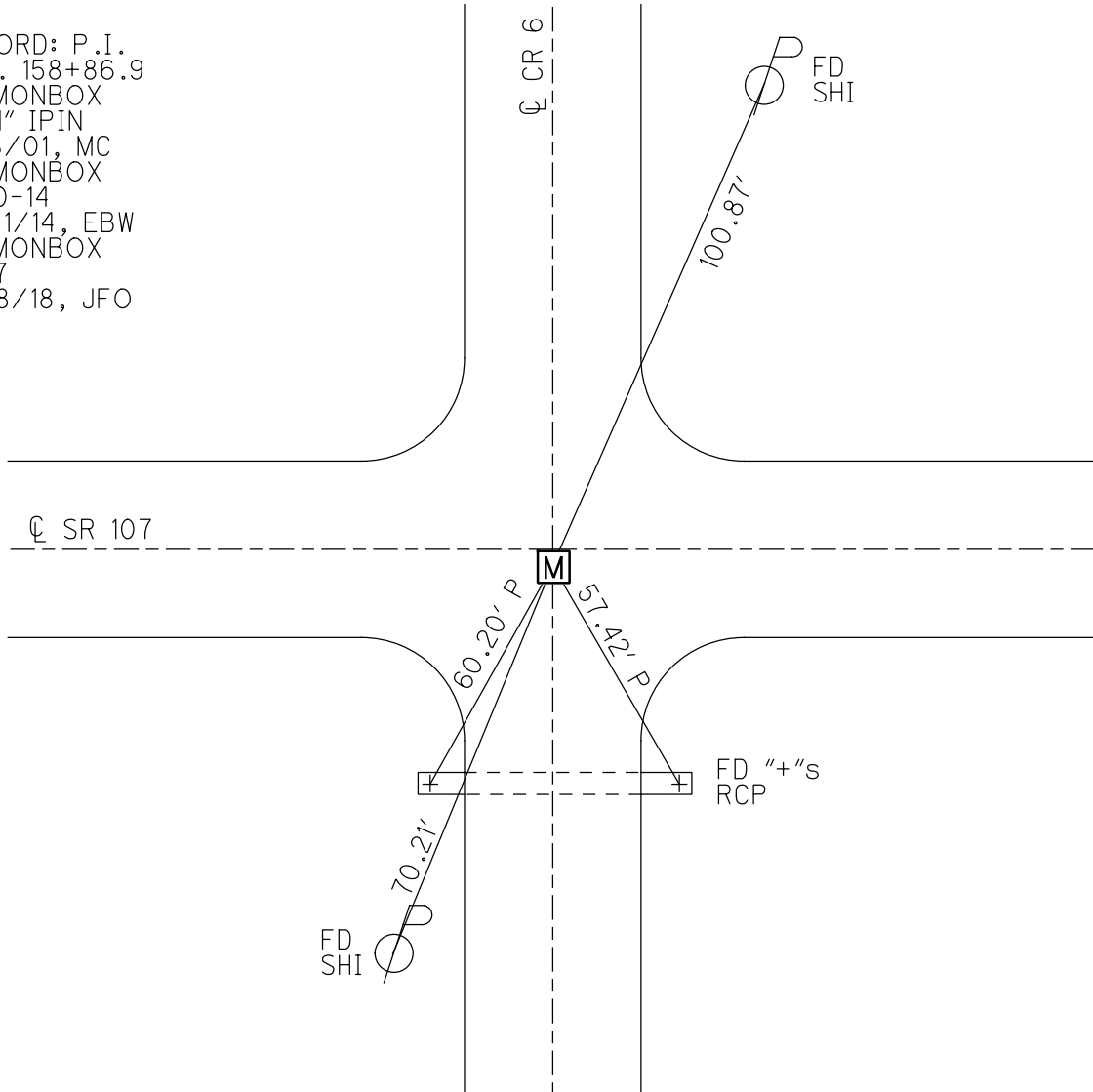
GEOID: 2012A

GRID: NORTHING: 706805.002

EASTING: 1363675.023



RECORD: P.I.
 STA. 158+86.9
 FD MONBOX
 W/ 1" IPIN
 6/18/01, MC
 FD MONBOX
 6-20-14
 12/31/14, EBW
 FD MONBOX
 REF7
 9/28/18, JFO



O.D.O.T. DISTRICT 2 SURVEY OFFICE (USE ONLY)

PERSONNEL

REFERENCE NO. 8

SHEET 8 OF 16

NOTES RHOADES

DATE 9/27/18

ROUTE SR 107

H.C. O'DONNELL

WEATHER CLOUDY

COUNTY WILLIAMS

R.C. RHOADES

TEMP. 55°

TOWNSHIP FLORENCE

SECTION 1

DWG BY NIESE PID 105474

T 7 N R 1 E

TYPE MONUMENT P.K./WASHER

ON SURFACE - ~~BELOW~~ ON

OFFSET 0.5' LT : ~~RT~~

9.5' TO LT EDGE PAVEMENT

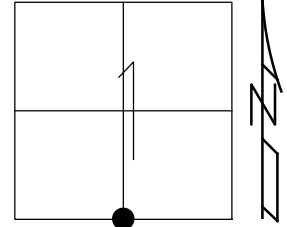
STATION: 185+24

HORIZ.DATUM: -

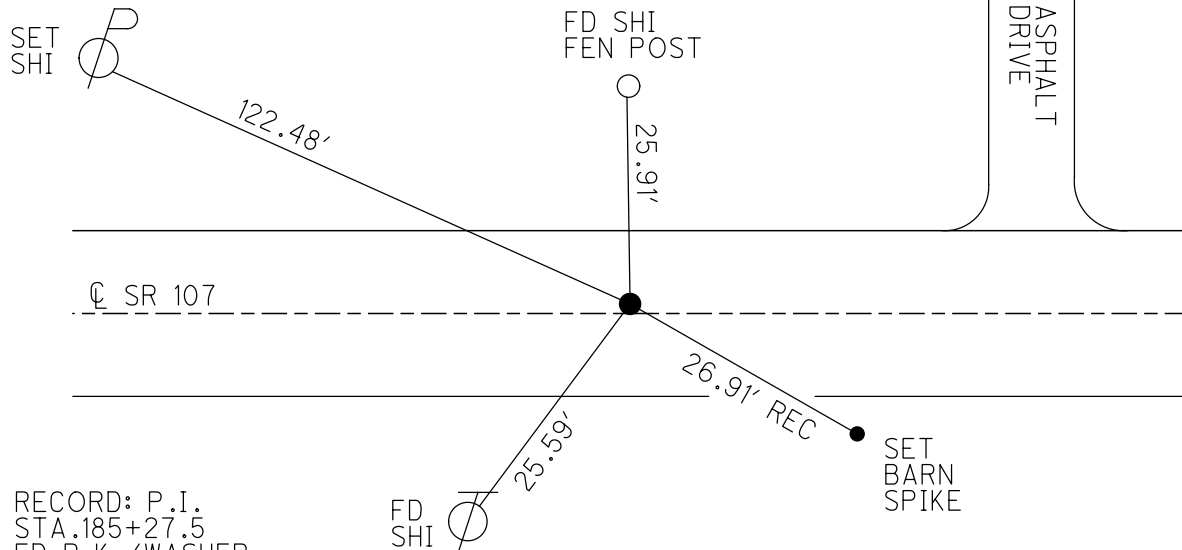
GEOID: -

GRID: NORTHING: 706799.778

EASTING: 1366315.248



RES# 06519



RECORD: P.I.
 STA. 185+27.5
 FD P.K./WASHER
 6/19/01, MC
 SET PK/WASHER
 10-21-02, MB
 FD P.K./WASHER
 REF8
 6-17-14, EBW
 FD P.K./WASHER
 7/2/14, JMR
 1/26/15, JLL
 FD P.K./WASHER
 9/27/18, JFO
 1" DOWN
 9/18/19, JMR

O.D.O.T. DISTRICT 2 SURVEY OFFICE (USE ONLY)

PERSONNEL

REFERENCE NO. 8 A

SHEET 9 OF 16

NOTES RHOADES

DATE 9/27/18

ROUTE SR 107

H.C. O'DONNELL

WEATHER CLOUDY

COUNTY WILLIAMS

R.C. RHOADES

TEMP. 55°

TOWNSHIP FLORENCE

DWG BY NIESE

PID 105474

SECTION 1

T 7 N R 1 E

TYPE MONUMENT P.K./WASHER

~~ON SURFACE~~ - BELOW 4"

OFFSET \odot PAVEMENT 0.4' ~~LF~~ : RT

- TO - EDGE PAVEMENT 1.5' W \odot TR 675

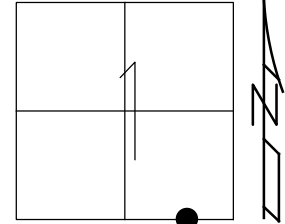
STATION: 198+47

HORZ.DATUM: NAD83(2011)

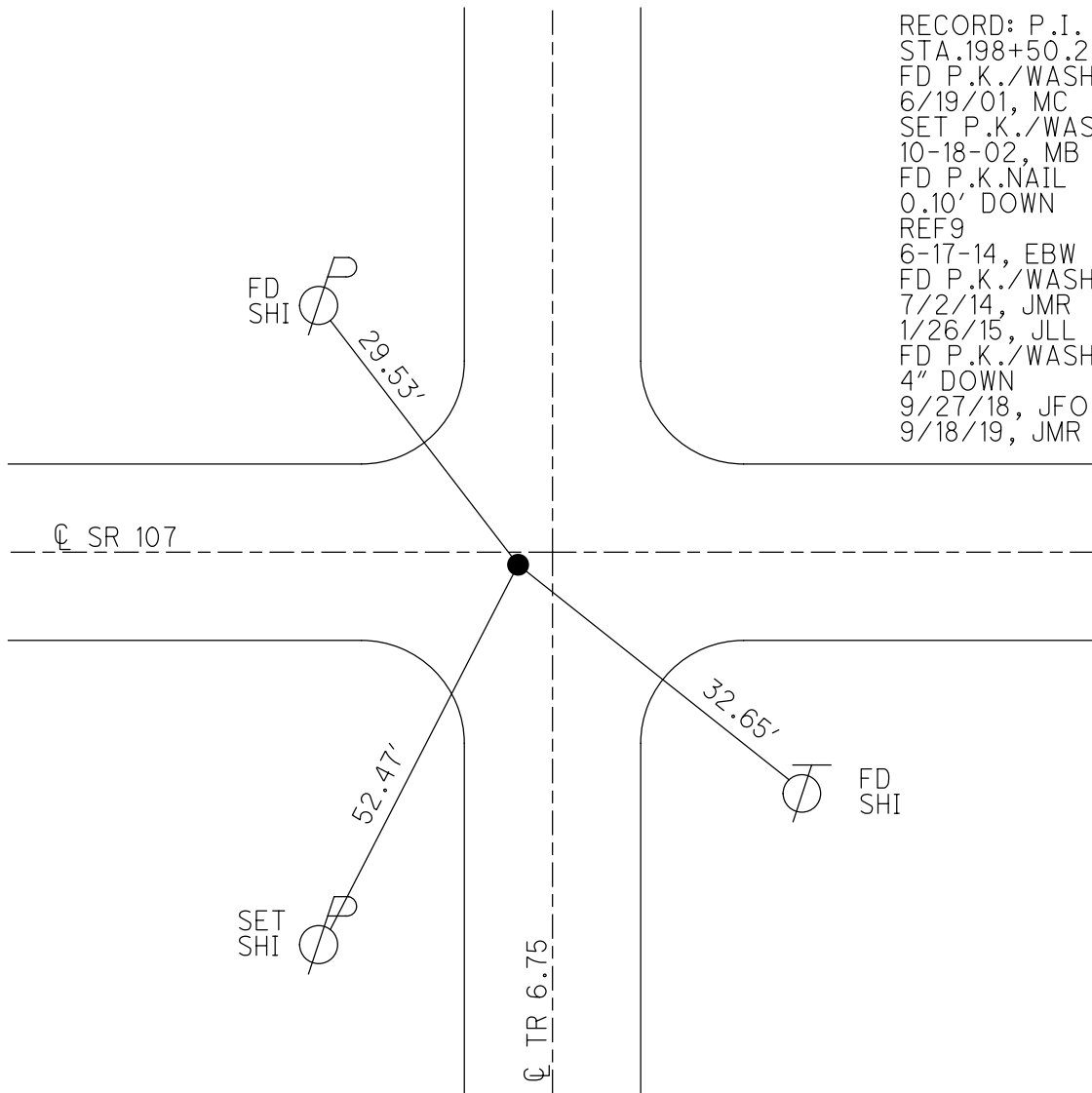
GEOID: 2012A

GRID: NORTHING: 706797.563

EASTING: 1367638.067



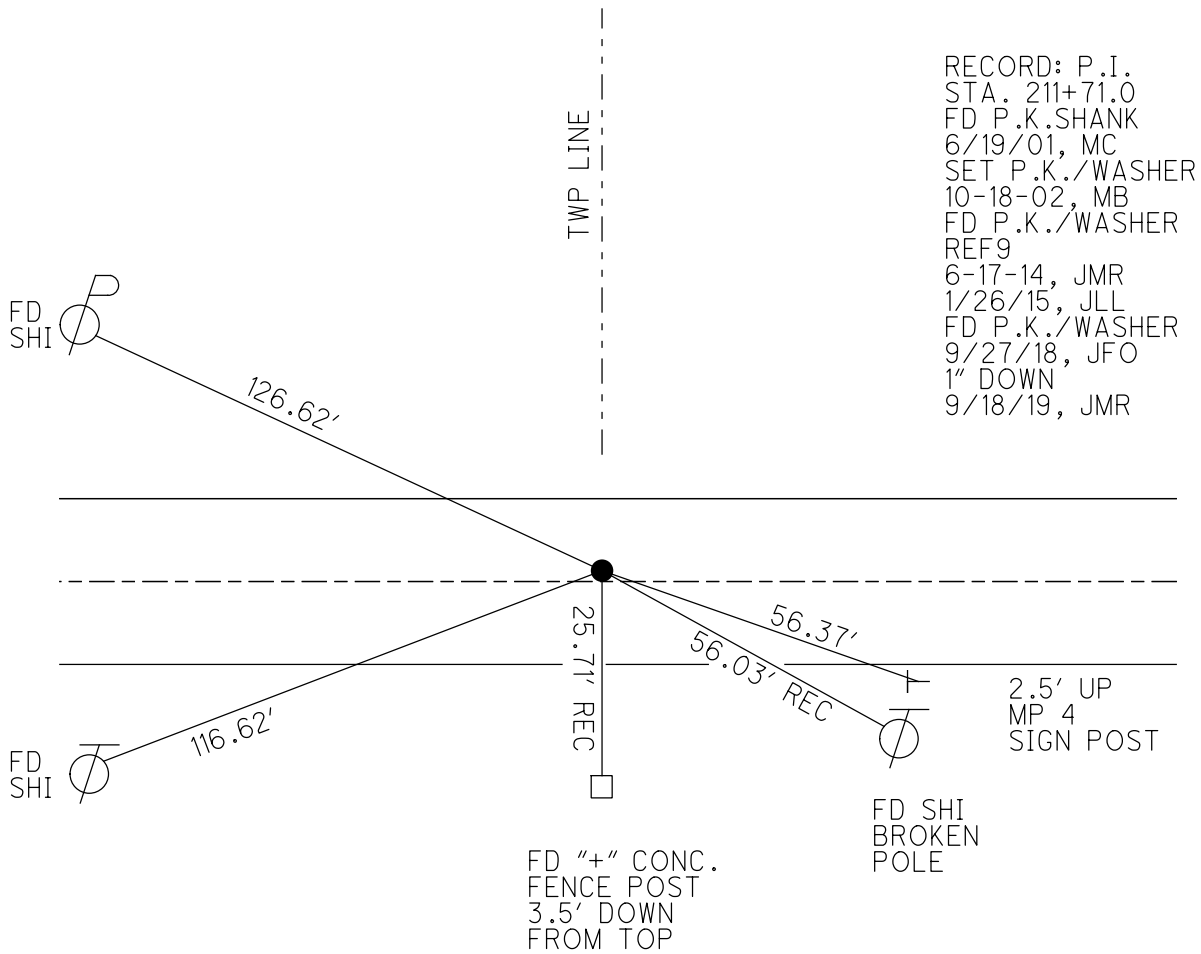
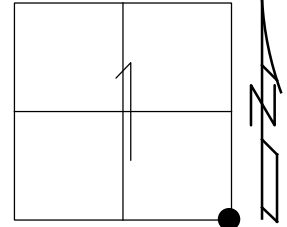
RECORD: P.I.
 STA.198+50.2
 FD P.K./WASHER
 6/19/01, MC
 SET P.K./WASHER
 10-18-02, MB
 FD P.K.NAIL
 0.10' DOWN
 REF9
 6-17-14, EBW
 FD P.K./WASHER
 7/2/14, JMR
 1/26/15, JLL
 FD P.K./WASHER
 4" DOWN
 9/27/18, JFO
 9/18/19, JMR



O.D.O.T. DISTRICT 2 SURVEY OFFICE (USE ONLY)

PERSONNEL _____ REFERENCE NO. 9 SHEET 10 OF 16
 NOTES RHOADES DATE 9/27/18 ROUTE SR 107
 H.C. O'DONNELL WEATHER CLOUDY COUNTY WILLIAMS
 R.C. RHOADES TEMP. 55° TOWNSHIP SUPERIOR
 DWG BY NIESE PID 105474 SECTION 6
 T 7 N R 2 E

TYPE MONUMENT P.K./WASHER
 ON SURFACE - ~~BELOW~~ ON
 OFFSET \odot PAVEMENT 0.5' ~~RT~~ : RT
9.3' TO LT EDGE PAVEMENT
 STATION: 211+68
 HORZ.DATUM: - GEOID: -
 GRID: NORTHING: 706801.246 EASTING: 1368958.704



O.D.O.T. DISTRICT 2 SURVEY OFFICE (USE ONLY)

PERSONNEL

REFERENCE NO. 10

SHEET 11 OF 16

NOTES O'DONNELL

DATE 8/30/19

ROUTE SR 107

H.C. O'DONNELL

WEATHER SUNNY

COUNTY WILLIAMS

R.C. AUBLE

TEMP. 69°

TOWNSHIP SUPERIOR

SECTION 6

DWG BY NIESE

PID 105474

T 7 N R 2 E

TYPE MONUMENT MONBOX W/1" IPIN

ON SURFACE - ~~BELOW~~ ON

OFFSET Q PAVEMENT 2.5' LT : ~~RT~~

7.0' TO LT EDGE PAVEMENT

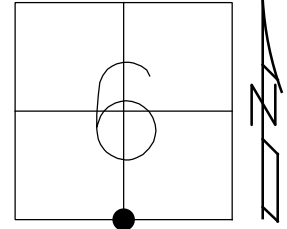
STATION: 241+89

HORZ. DATUM: NAD83(2011)

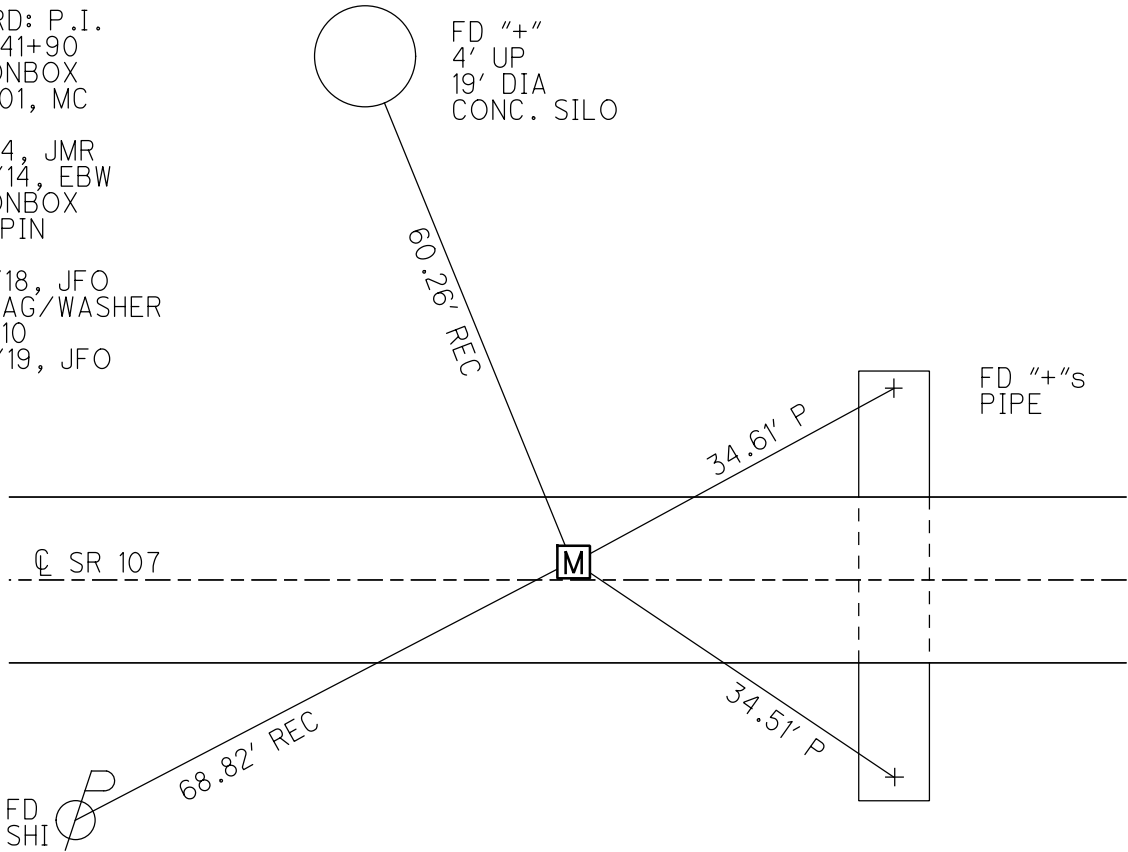
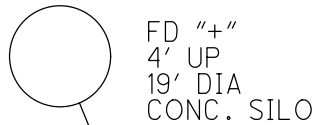
GEOID: 2012A

GRID: NORTHING: 706771.522

EASTING: 1371977.441



RECORD: P.I.
 STA. 241+90
 FD MONBOX
 6/19/01, MC
 REF10
 6-17-14, JMR
 12/31/14, EBW
 FD MONBOX
 W/1" IPIN
 REF10
 9/28/18, JFO
 SET MAG/WASHER
 CKREF10
 8/30/19, JFO



O.D.O.T. DISTRICT 2 SURVEY OFFICE (USE ONLY)

PERSONNEL

REFERENCE NO. 11

SHEET 12 OF 16

NOTES RHOADES

DATE 9/28/18

ROUTE SR 107

H.C. O'DONNELL

WEATHER CLEAR

COUNTY WILLIAMS

R.C. RHOADES

TEMP. 60°

TOWNSHIP SUPERIOR

SECTION 5

DWG BY NIESE PID 105474

T 7 N R 2 E

TYPE MONUMENT P.K./WASHER

ON SURFACE - ~~BELOW~~ ON

OFFSET \odot PAVEMENT 1.0' LT : ~~RT~~

- TO - EDGE PAVEMENT ON \odot CR 8

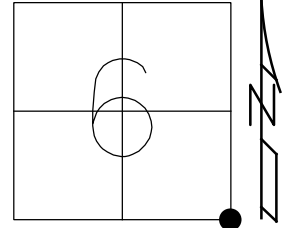
STATION: 268+33

HORZ. DATUM: -

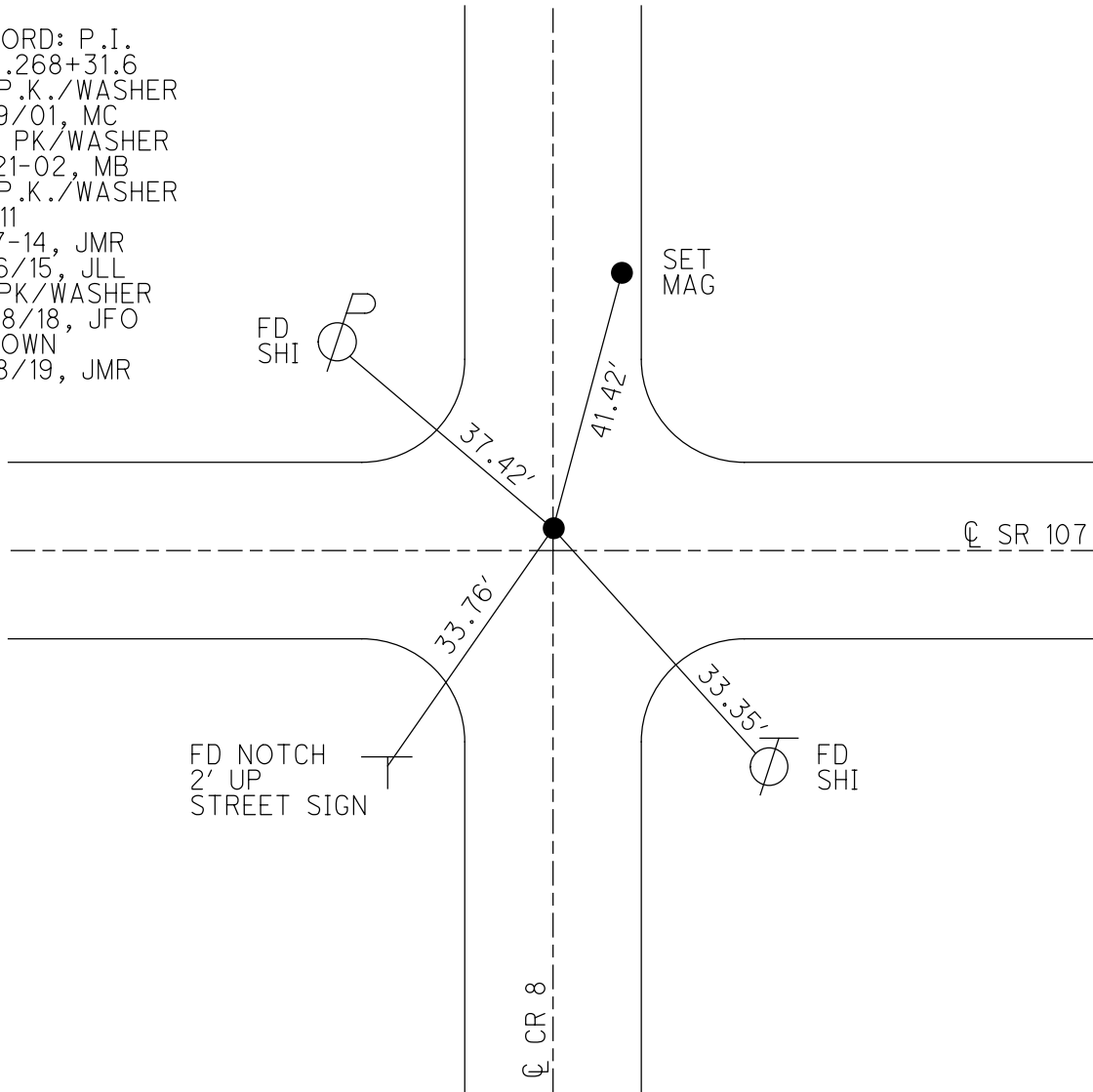
GEOID: -

GRID: NORTHING: 706745.850

EASTING: 1374618.341



RECORD: P.I.
 STA. 268+31.6
 FD P.K./WASHER
 6/19/01, MC
 SET PK/WASHER
 10-21-02, MB
 FD P.K./WASHER
 REF11
 6-17-14, JMR
 1/26/15, JLL
 FD PK/WASHER
 9/28/18, JFO
 1" DOWN
 9/18/19, JMR

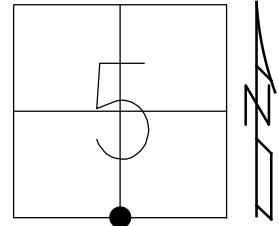


O.D.O.T. DISTRICT 2 SURVEY OFFICE (USE ONLY)

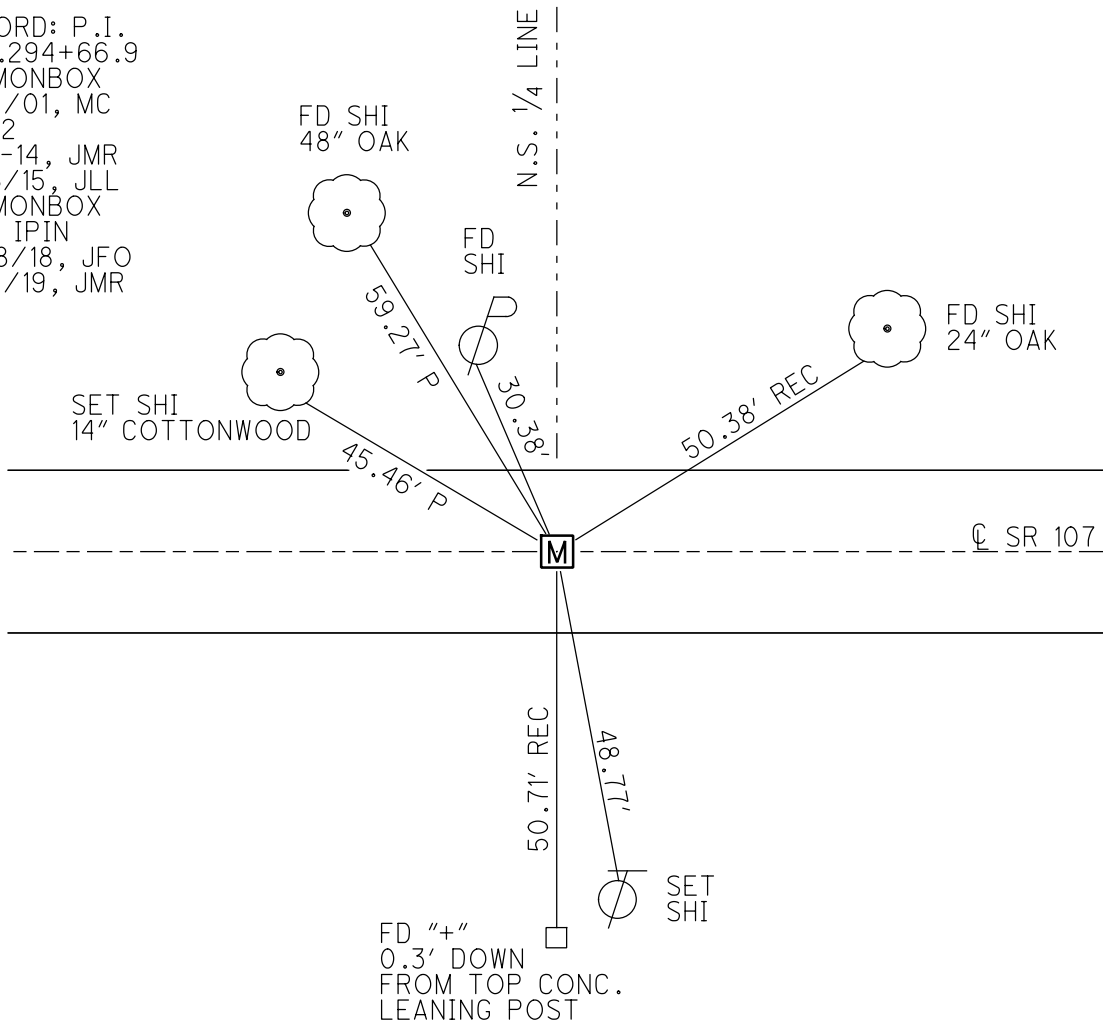
PERSONNEL _____ REFERENCE NO. 12 SHEET 13 OF 16
 NOTES RHOADES DATE 9/28/18 ROUTE SR 107
 H.C. O'DONNELL WEATHER CLEAR COUNTY WILLIAMS
 R.C. RHOADES TEMP. 59° TOWNSHIP SUPERIOR
 DWG BY NIESE PID 105474 SECTION 5
 T 7 N R 2 E

TYPE MONUMENT MONBOX W/ 1" IPIN
 ON SURFACE - ~~BELOW~~ ON
 OFFSET 9.2' TO LT EDGE PAVEMENT
 STATION: 294+70

HORZ. DATUM: NAD83(2011) GEOID: 2012A
 GRID: NORTHING: 706700.627 EASTING: 1377252.550



RECORD: P.I.
 STA. 294+66.9
 FD MONBOX
 6/19/01, MC
 REF12
 6-17-14, JMR
 1/26/15, JLL
 FD MONBOX
 W/1" IPIN
 9/28/18, JFO
 9/18/19, JMR

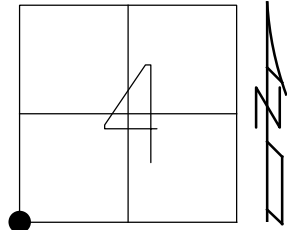


O.D.O.T. DISTRICT 2 SURVEY OFFICE (USE ONLY)

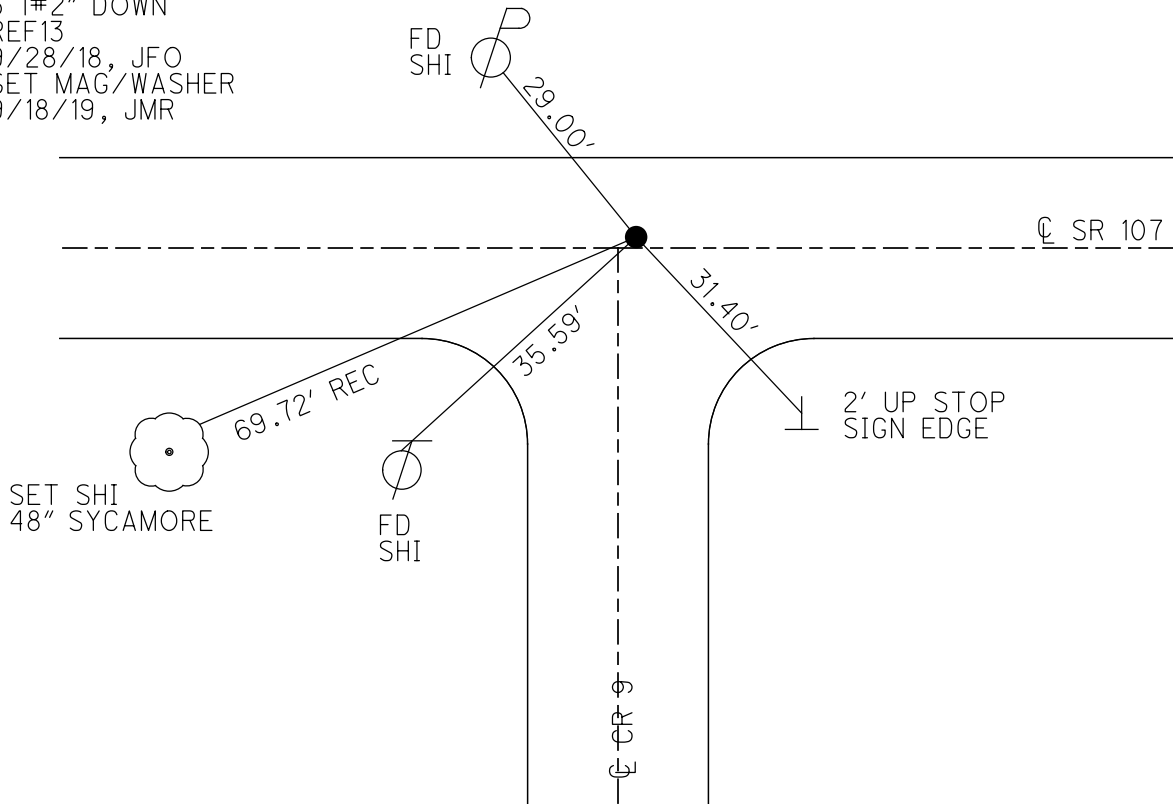
PERSONNEL _____ REFERENCE NO. 13 SHEET 14 OF 16
 NOTES RHOADES DATE 9/28/18 ROUTE SR 107
 H.C. O'DONNELL WEATHER CLEAR COUNTY WILLIAMS
 R.C. RHOADES TEMP. 59° TOWNSHIP SUPERIOR
 DWG BY NIESE PID 105474 SECTION 4
 T 7 N R 2 E

TYPE MONUMENT P.K./WASHER
~~ON SURFACE~~ - BELOW 3 1/2"
 OFFSET \odot PAVEMENT 0.7' LT : ~~RT~~
9.8' TO LT EDGE PAVEMENT
 STATION: 321+14

HORIZ.DATUM: NAD83(2011) GEOID: 2012A
 GRID: NORTHING: 706655.721 EASTING: 1379892.589



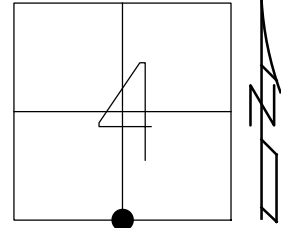
RECORD: P.I.
 STA. 321+07.3
 FD P.K./WASHER
 6/19/01, MC
 SET P.K./WASHER
 10-21-02, MB
 REF13
 6-17-14, JMR
 1/26/15, JLL
 FD P.K./WASHER
 3 1#2" DOWN
 REF13
 9/28/18, JFO
 SET MAG/WASHER
 9/18/19, JMR



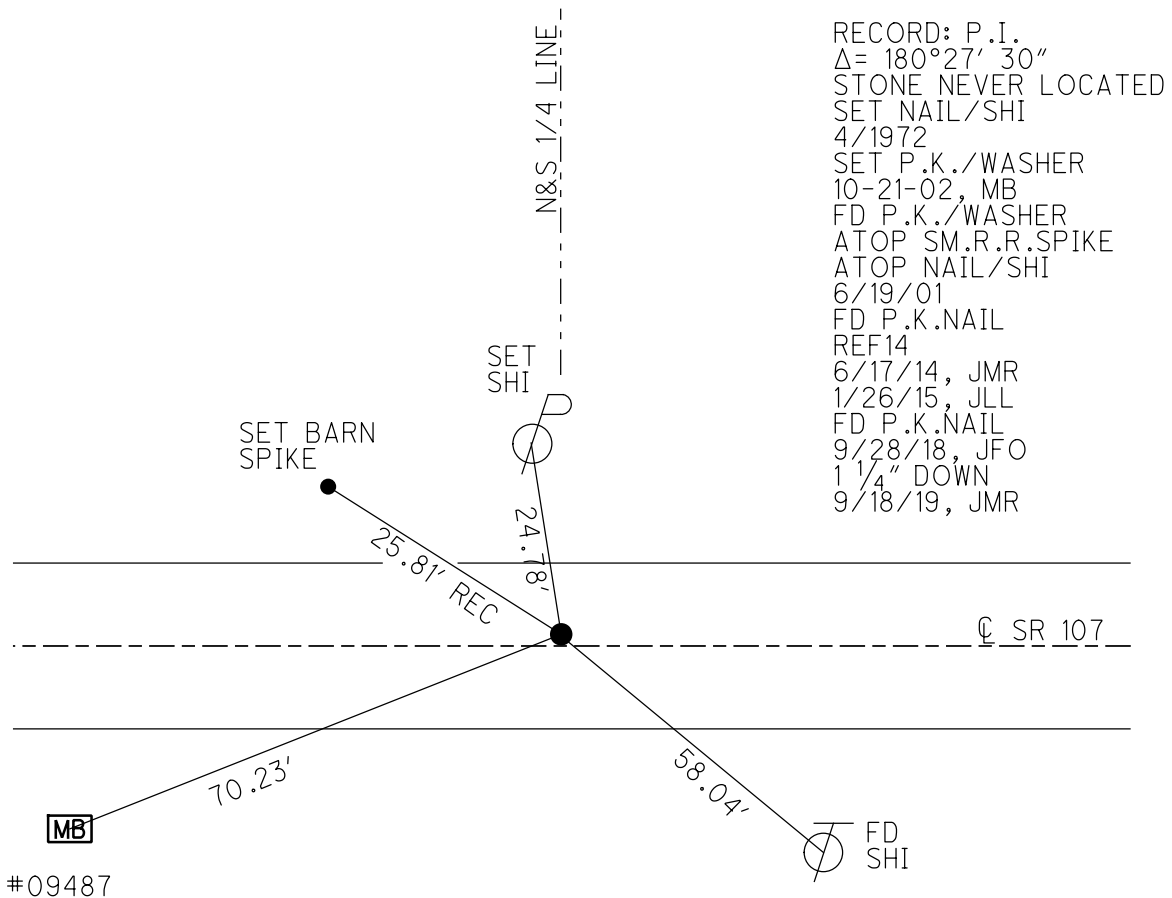
O.D.O.T. DISTRICT 2 SURVEY OFFICE (USE ONLY)

PERSONNEL _____ REFERENCE NO. 14 SHEET 15 OF 16
 NOTES RHOADES DATE 9/28/18 ROUTE SR 107
 H.C. O'DONNELL WEATHER CLEAR COUNTY WILLIAMS
 R.C. RHOADES TEMP. 60° TOWNSHIP SUPERIOR
 DWG BY NIESE PID 105474 SECTION 4
 T 7 N R 2 E

TYPE MONUMENT P.K. NAIL
 ON SURFACE - BELOW ON
 OFFSET $\text{\textcircled{C}}$ PAVEMENT 1.8' LT : ~~RT~~
9.0' TO LT EDGE PAVEMENT
 STATION: 347+66.28



HORZ.DATUM: NAD83(2011) GEOID: 2012A
 GRID: NORTHING: 706592.439 EASTING: 1382548.622



RECORD: P.I.
 $\Delta = 180^\circ 27' 30''$
 STONE NEVER LOCATED
 SET NAIL/SHI
 4/1972
 SET P.K./WASHER
 10-21-02, MB
 FD P.K./WASHER
 ATOP SM.R.R.SPIKE
 ATOP NAIL/SHI
 6/19/01
 FD P.K.NAIL
 REF14
 6/17/14, JMR
 1/26/15, JLL
 FD P.K.NAIL
 9/28/18, JFO
 1 1/4" DOWN
 9/18/19, JMR

#09487

O.D.O.T. DISTRICT 2 SURVEY OFFICE (USE ONLY)

PERSONNEL

REFERENCE NO. 15

SHEET 16 OF 16

NOTES RHOADES

DATE 9/28/18

ROUTE SR 107

H.C. O'DONNELL

WEATHER CLEAR

COUNTY WILLIAMS

R.C. RHOADES

TEMP. 60°

TOWNSHIP SUPERIOR

DWG BY NIESE

PID 105474

SECTION 3

T 7 N R 2 E

TYPE MONUMENT MAG/WASHER

ON SURFACE - ~~BELOW~~ ON

OFFSET Q PAVEMENT 2.8' ~~LT~~ : RT

- TO - EDGE PAVEMENT 1.6' W Q CR 10

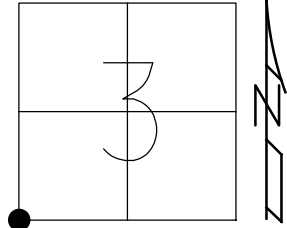
STATION: 374+23.67

HORZ.DATUM: -

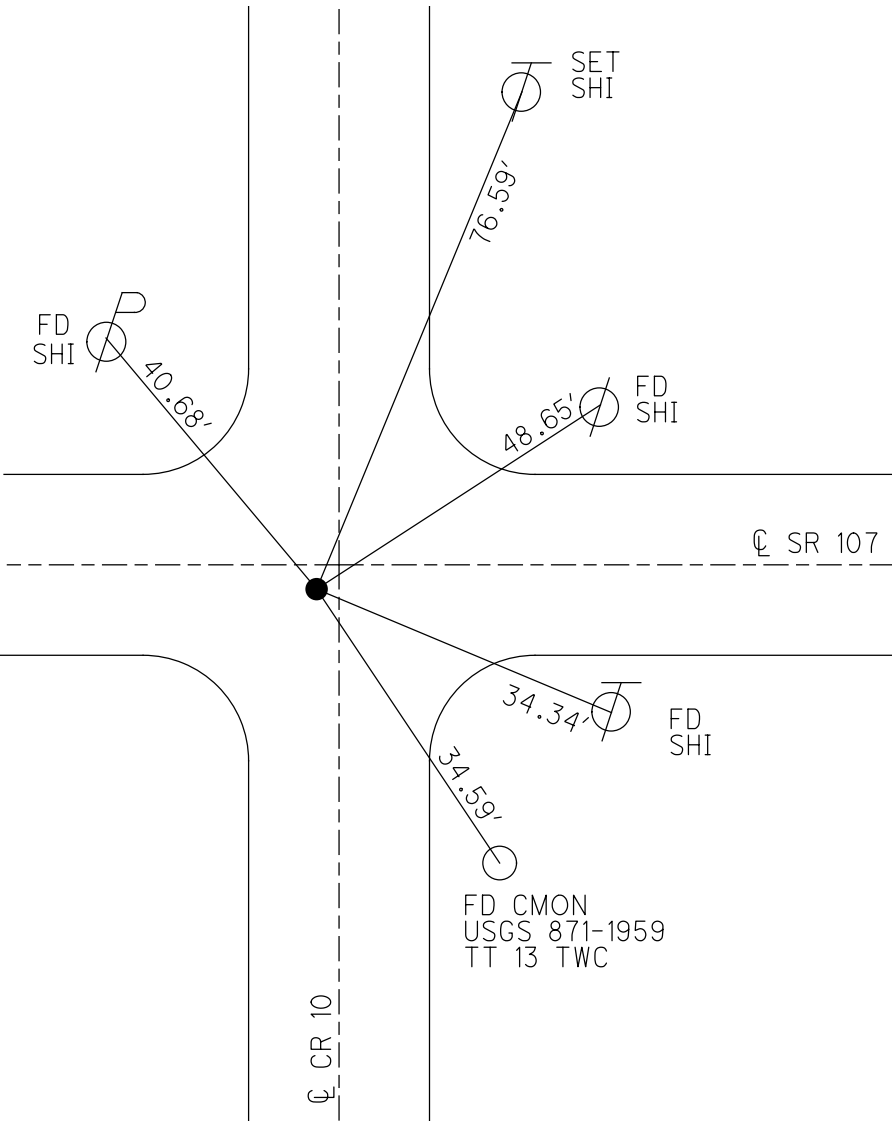
GEOID: -

GRID: NORTHING: 706508.211

EASTING: 1385204.676



RECORD: P.I.
 STA. 374+22.08
 FD P.K./WASHER
 6/19/01, MC
 SET P.K./WASHER
 10-21-02, MB
 FD P.K.NAIL
 REF15
 6-17-14, JMR
 FD R.R.SPIKE
 ATOP IPIPE
 6" DOWN
 FD IPIPE
 6" DOWN
 12/29/14, DCH
 1/26/15, JLL
 SET MAG/WASHER
 8/7/17, JLL
 FD MAG/WASHER
 9/28/18, JFO
 9/18/19, JMR

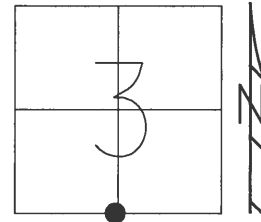


O.D.O.T. DISTRICT 2 SURVEY OFFICE (USE ONLY)

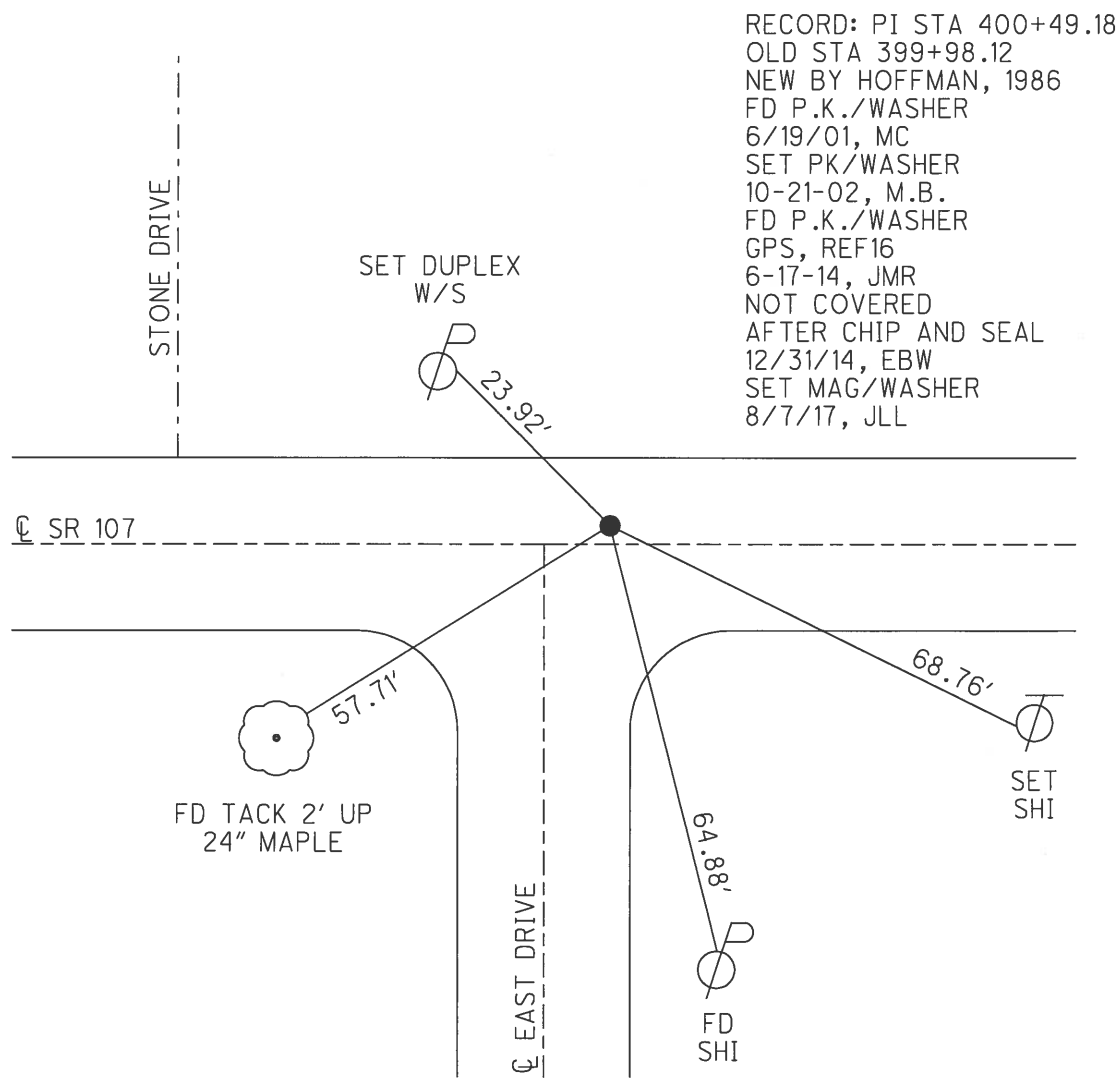
PERSONNEL _____ REFERENCE NO. 16 SHEET 3 OF 25

NOTES HOMAN DATE 4/19/17 ROUTE SR 107
 H.C. HOMAN WEATHER CLOUDY COUNTY WILLIAMS
 R.C. HELDMAN TEMP. 65° TOWNSHIP SUPERIOR
 _____ SECTION 3
 _____ T 7 N R 2 E

TYPE MONUMENT PK/WASHER
 ON SURFACE - ~~BELOW~~ ON _____
 LEFT - ☉ PAV'T - ~~RIGHT~~ 0.5'
10.5' TO LT EDGE PAVEMENT
 S.L.M. 400+50.57



Grid: Northing: 706470.422 Easting: 1387831.307

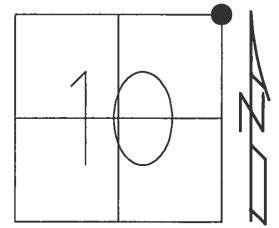


RECORD: PI STA 400+49.18
 OLD STA 399+98.12
 NEW BY HOFFMAN, 1986
 FD P.K./WASHER
 6/19/01, MC
 SET PK/WASHER
 10-21-02, M.B.
 FD P.K./WASHER
 GPS, REF16
 6-17-14, JMR
 NOT COVERED
 AFTER CHIP AND SEAL
 12/31/14, EBW
 SET MAG/WASHER
 8/7/17, JLL

O.D.O.T. DISTRICT 2 SURVEY OFFICE (USE ONLY)

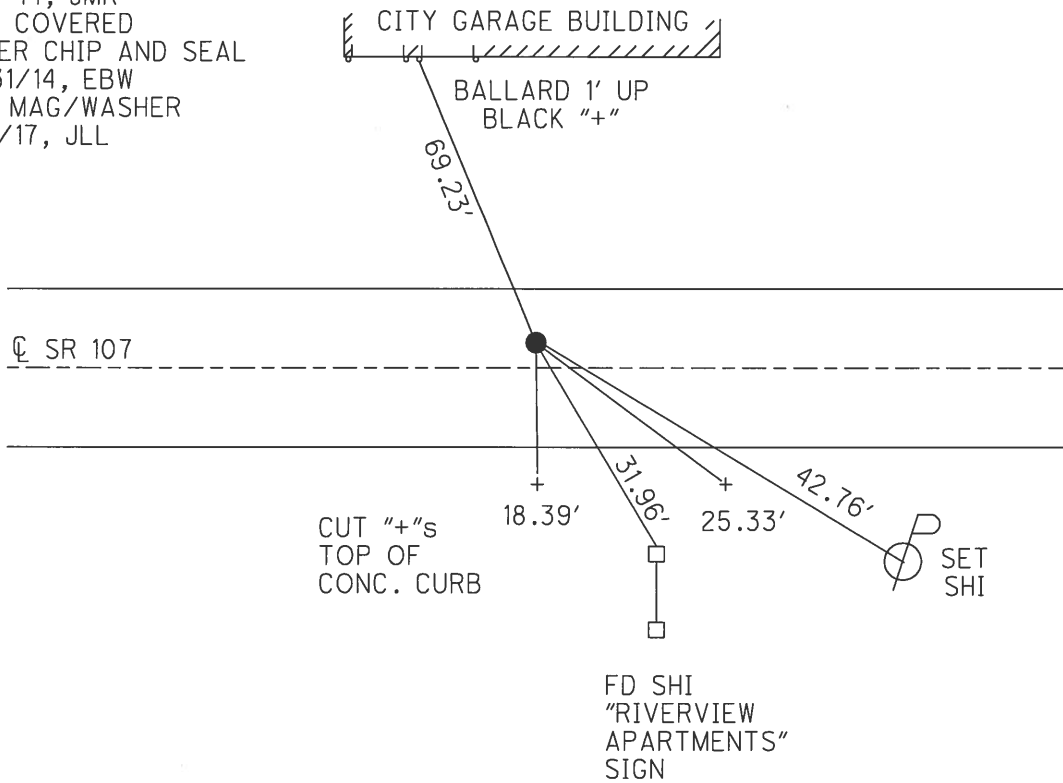
PERSONNEL _____ REFERENCE NO. 17 SHEET 4 OF 25
 NOTES RHOADES DATE 6-17-14 ROUTE SR 107
 H.C. RHOADES WEATHER FAIR COUNTY WILLIAMS
 R.C. MEYER TEMP. 85° TOWNSHIP SUPERIOR
 SECTION 10
 T 7 N R 2 E

TYPE MONUMENT PK/WASHER
 ON SURFACE - ~~BELOW~~ ON
 LEFT - ☉ PAV'T - RIGHT 0.9'
18.1' TO RT EDGE PAVEMENT
 S.L.M. 426+76.93



Grid: Northing: 706433.244 Easting: 1390457.423

RECORD: $\Delta = 0^\circ 10' RT$
 STA. 105+68.50, 1948 PLAN
 SET MAG & WASHER
 8-15-05, M.B.
 FD P.K./WASHER
 GPS, REF17
 6-17-14, JMR
 NOT COVERED
 AFTER CHIP AND SEAL
 12/31/14, EBW
 SET MAG/WASHER
 8/7/17, JLL



O.D.O.T. DISTRICT 2 SURVEY OFFICE (USE ONLY)

PERSONNEL _____ REFERENCE NO. 17 A SHEET 5 OF 25

NOTES BARNHISEL DATE 5/18/05 ROUTE SR 107
 H.C. CANTERBURY WEATHER PT CLOUDY COUNTY WILLIAMS
 R.C. MIKLOVIC TEMP. 50° TOWNSHIP SUPERIOR
 _____ SECTION 11
 _____ T 7 N R 2 E

TYPE MONUMENT P.K./WASHER

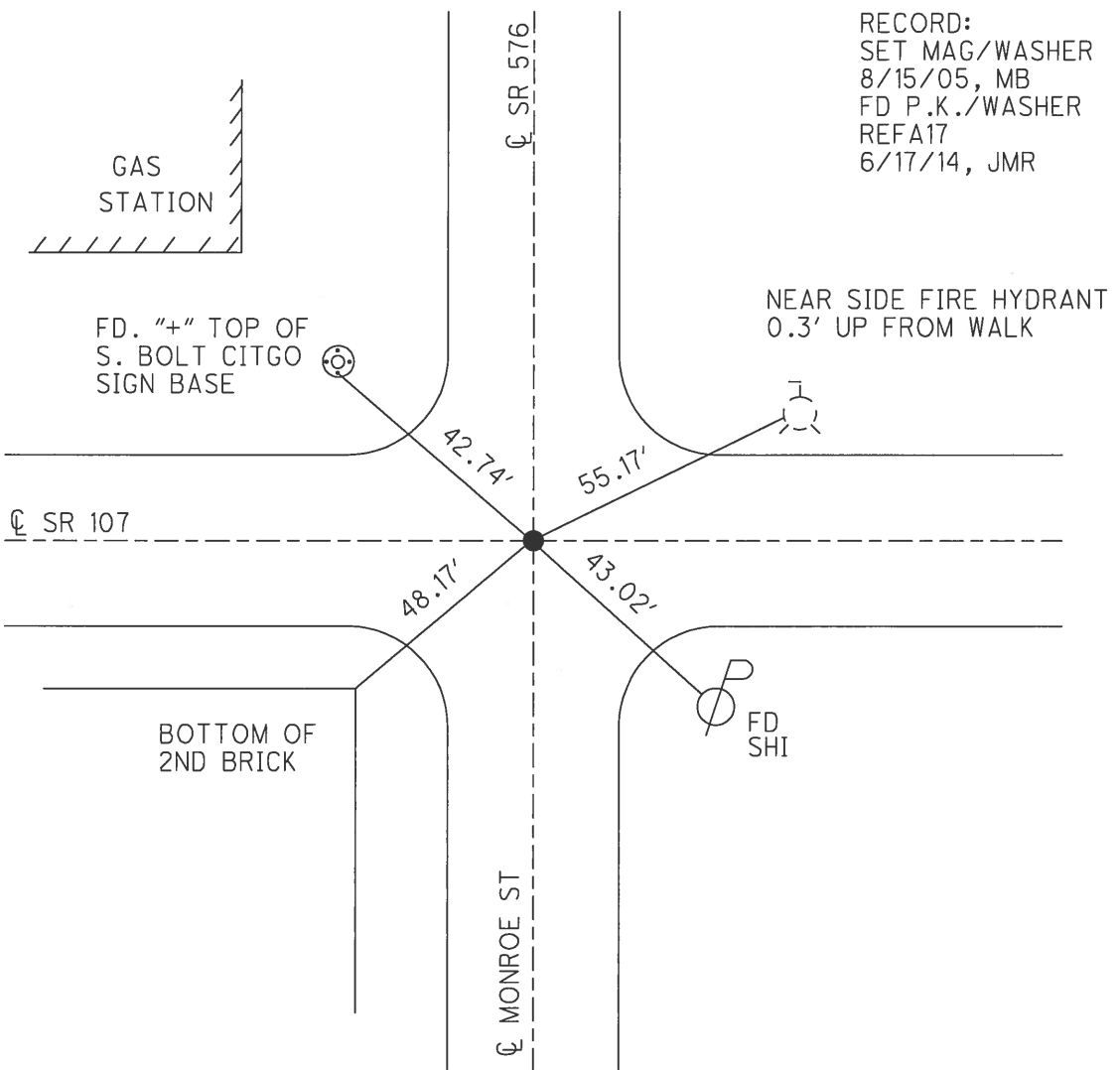
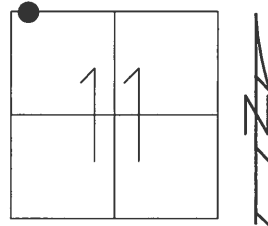
ON SURFACE - ~~BELOW~~ ON _____

LEFT - ☉ PAV'T - RIGHT _____ ON _____

- TO - EDGE PAVEMENT

S.L.M. 429+78.21

GRID: NORTHING: 706427.956 EASTING: 1390758.637

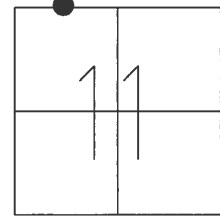


RECORD:
 SET MAG/WASHER
 8/15/05, MB
 FD P.K./WASHER
 REFA17
 6/17/14, JMR

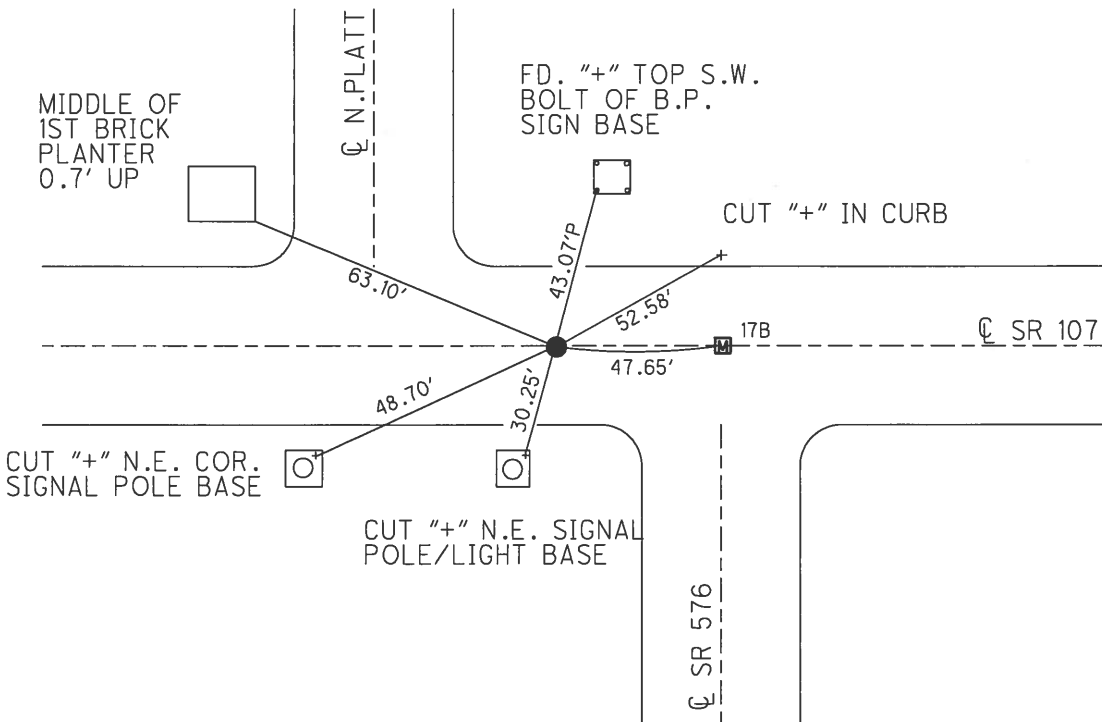
O.D.O.T. DISTRICT 2 SURVEY OFFICE (USE ONLY)

PERSONNEL _____ REFERENCE NO. 17 AB SHEET 6 OF 25
 NOTES BARNHISEL DATE 5/18/05 ROUTE SR 107
 H.C. CANTERBURY WEATHER CLOUDY COUNTY WILLIAMS
 R.C. MIKLOVIC TEMP. 50° TOWNSHIP SUPERIOR
 _____ SECTION 11
 _____ T 7 N R 2 E

TYPE MONUMENT P.K./WASHER
 ON SURFACE - ~~BELOW~~ ON _____
~~LEFT~~ - CL PAV'T - RIGHT 2', ON CL S
22' TO LT EDGE PAVEMENT
 S.L.M. 442+96
 GRID: NORTHING: - _____ EASTING: - _____



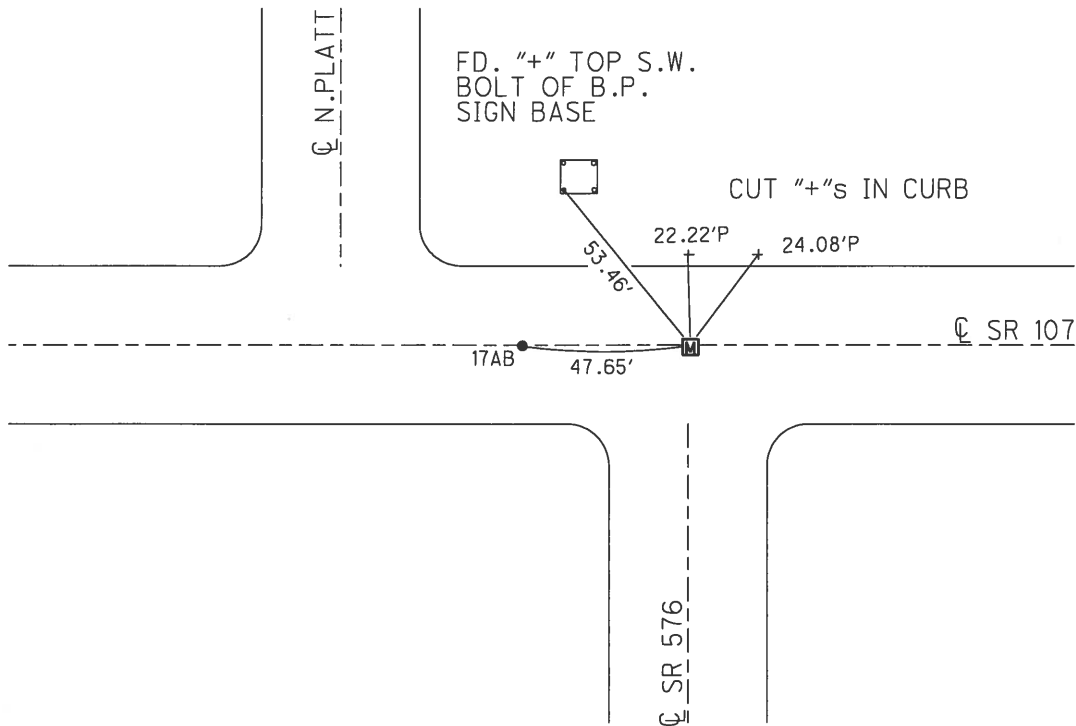
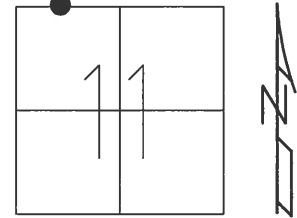
RECORD:
 SET MAG/WASHER
 8/15/05, MB
 D.N.F.
 6/17/14, JMR



O.D.O.T. DISTRICT 2 SURVEY OFFICE (USE ONLY)

PERSONNEL _____ REFERENCE NO. 17 B SHEET 7 OF 25
 NOTES BARNHEISEL DATE 5/18/05 ROUTE SR 107
 H.C. CANTERBURY WEATHER CLOUDY COUNTY WILLIAMS
 R.C. MIKLOVIC TEMP. 50° TOWNSHIP SUPERIOR
 SECTION 11
 T 7 N R 2 E

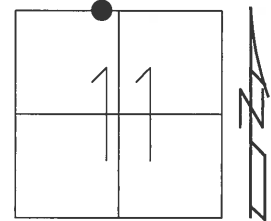
TYPE MONUMENT MONBOX W/IPIN
 ON SURFACE - ~~BELOW~~ ON _____
~~LEFT~~ - CL PAV'T - RIGHT 2', ON CL S
22' TO LT EDGE PAVEMENT
 S.L.M. 443+44.6
 GRID: NORTHING: 706404.197 EASTING: 1392124.819



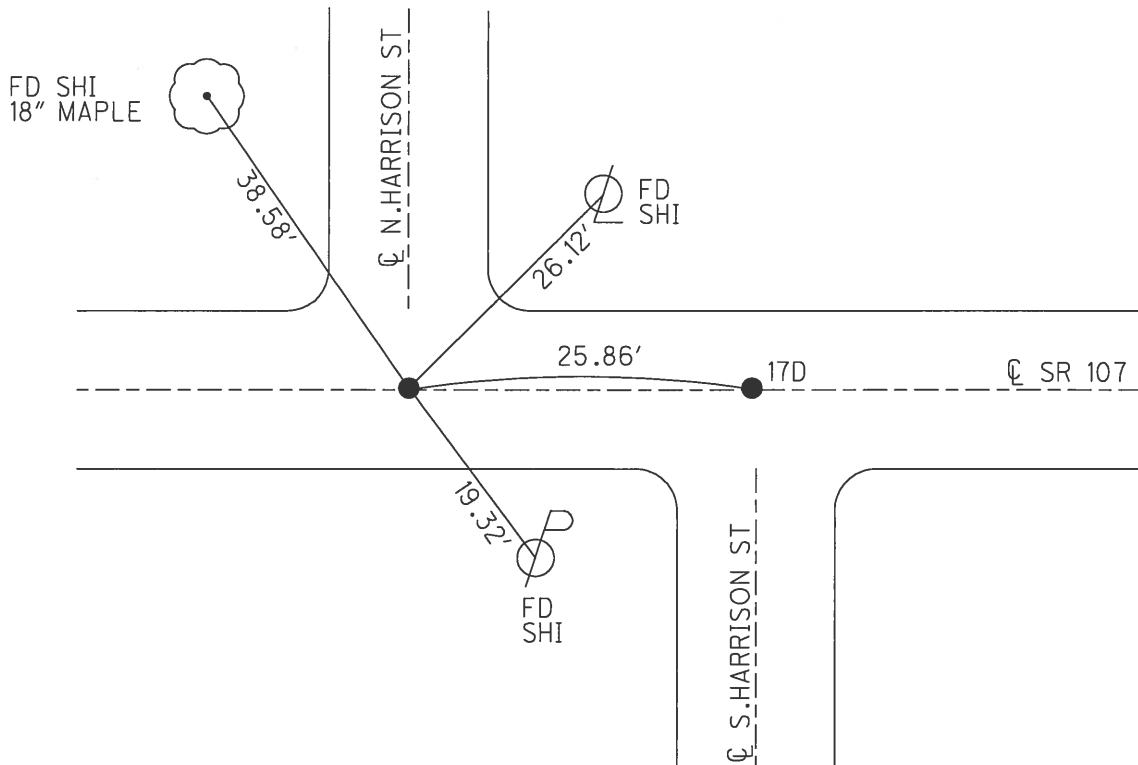
O.D.O.T. DISTRICT 2 SURVEY OFFICE (USE ONLY)

PERSONNEL _____ REFERENCE NO. 17 C SHEET 8 OF 25
 NOTES STONE DATE 10/14/80 ROUTE SR 107
 H.C. MICHALAK WEATHER CLOUDY COUNTY WILLIAMS
 R.C. NEUSER TEMP. 59° TOWNSHIP SUPERIOR
 _____ CURTIS _____ SECTION 11
 _____ T 7 N R 2 E

TYPE MONUMENT NAIL
 ON SURFACE - ~~BELOW~~ ON _____
 LEFT - ☉ PAV'T - RIGHT ON _____
16' TO RT S.FACE CURB
 S.L.M. 449+60±
 Grid: Northing: _____ Easting: _____



RECORD:
 DNF POINT
 1993, 5/18/05
 12/29/14



O.D.O.T. DISTRICT 2 SURVEY OFFICE (USE ONLY)

PERSONNEL _____ REFERENCE NO. 17 D SHEET 9 OF 25

NOTES	<u>STONE</u>	DATE	<u>10/14/80</u>	ROUTE	<u>SR 107</u>
H.C.	<u>MICHALAK</u>	WEATHER	<u>CLOUDY</u>	COUNTY	<u>WILLIAMS</u>
R.C.	<u>NEUSER</u>	TEMP.	<u>59°</u>	TOWNSHIP	<u>SUPERIOR</u>
	<u>CURTIS</u>			SECTION	<u>11</u>
				T	<u>7 N</u>
				R	<u>2 E</u>

TYPE MONUMENT NAIL

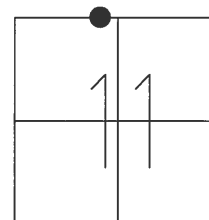
ON SURFACE - ~~BELOW~~ ON

LEFT - ☉ PAV'T - RIGHT ON

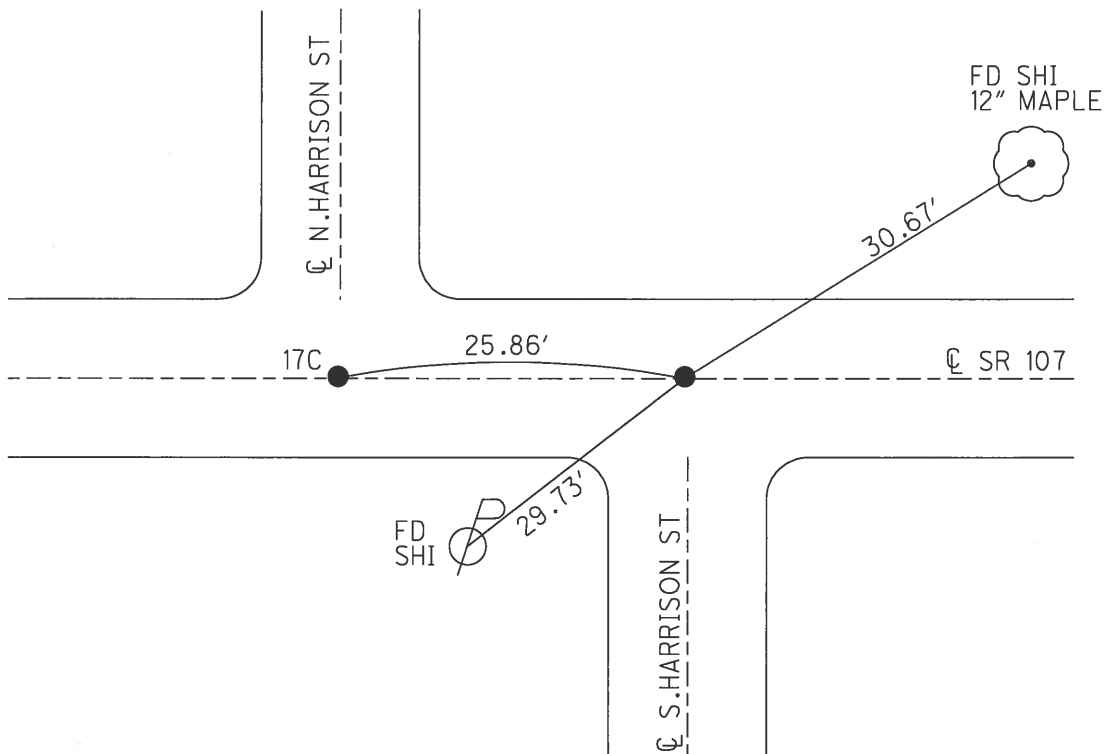
14.2' TO LT N.FACE CURB

S.L.M. 449+85±

Grid: Northing: _____ Easting: _____



RECORD:
DNF POINT
1993, 5/18/05
12/29/14



O.D.O.T. DISTRICT 2 SURVEY OFFICE (USE ONLY)

PERSONNEL _____ REFERENCE NO. 17 E SHEET 8 OF 31

NOTES HOMAN _____ DATE 4/19/17 _____ ROUTE SR 107

H.C. HOMAN _____ WEATHER CLOUDY _____ COUNTY WILLIAMS

R.C. HELDMAN _____ TEMP. 65° _____ TOWNSHIP SUPERIOR

_____ SECTION 11

T 7 N R 2 E

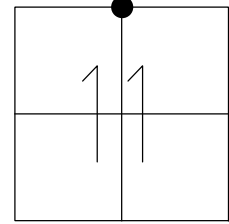
TYPE MONUMENT MAG/WASHER

ON SURFACE - ~~BELOW~~ ON

LEFT - ☉ PAV'T - RIGHT ON

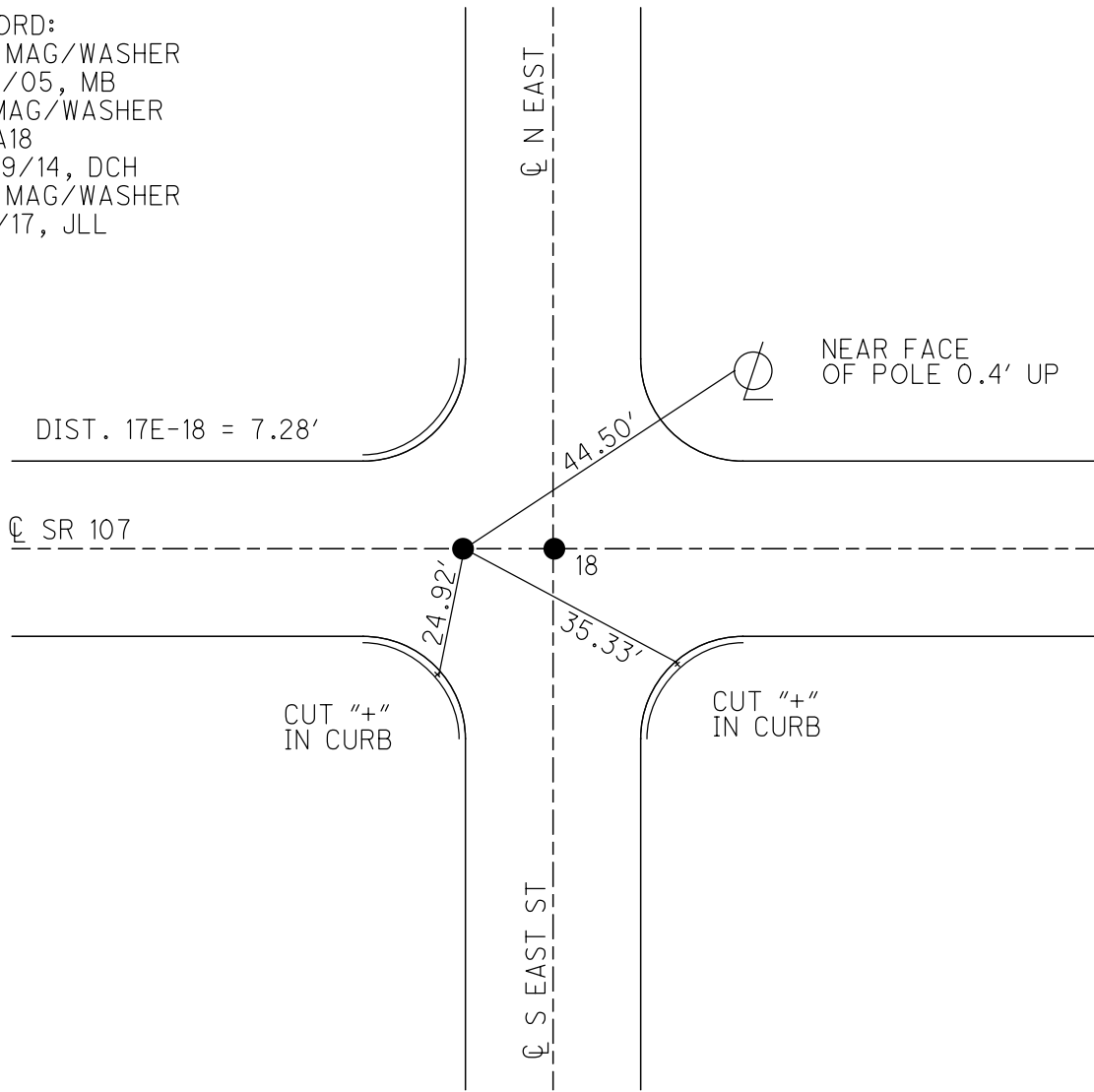
- TO - EDGE PAVEMENT

S.L.M. 453+00.31



GRID: NORTHING: 706387.519 EASTING: 1393080.379

RECORD:
 SET MAG/WASHER
 8/15/05, MB
 FD MAG/WASHER
 REFA18
 12/29/14, DCH
 SET MAG/WASHER
 8/7/17, JLL

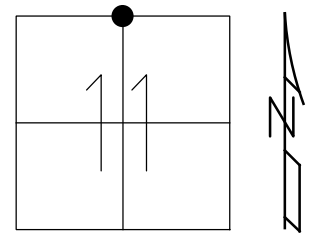


O.D.O.T. DISTRICT 2 SURVEY OFFICE (USE ONLY)

PERSONNEL _____ REFERENCE NO. 18 SHEET 9 OF 31

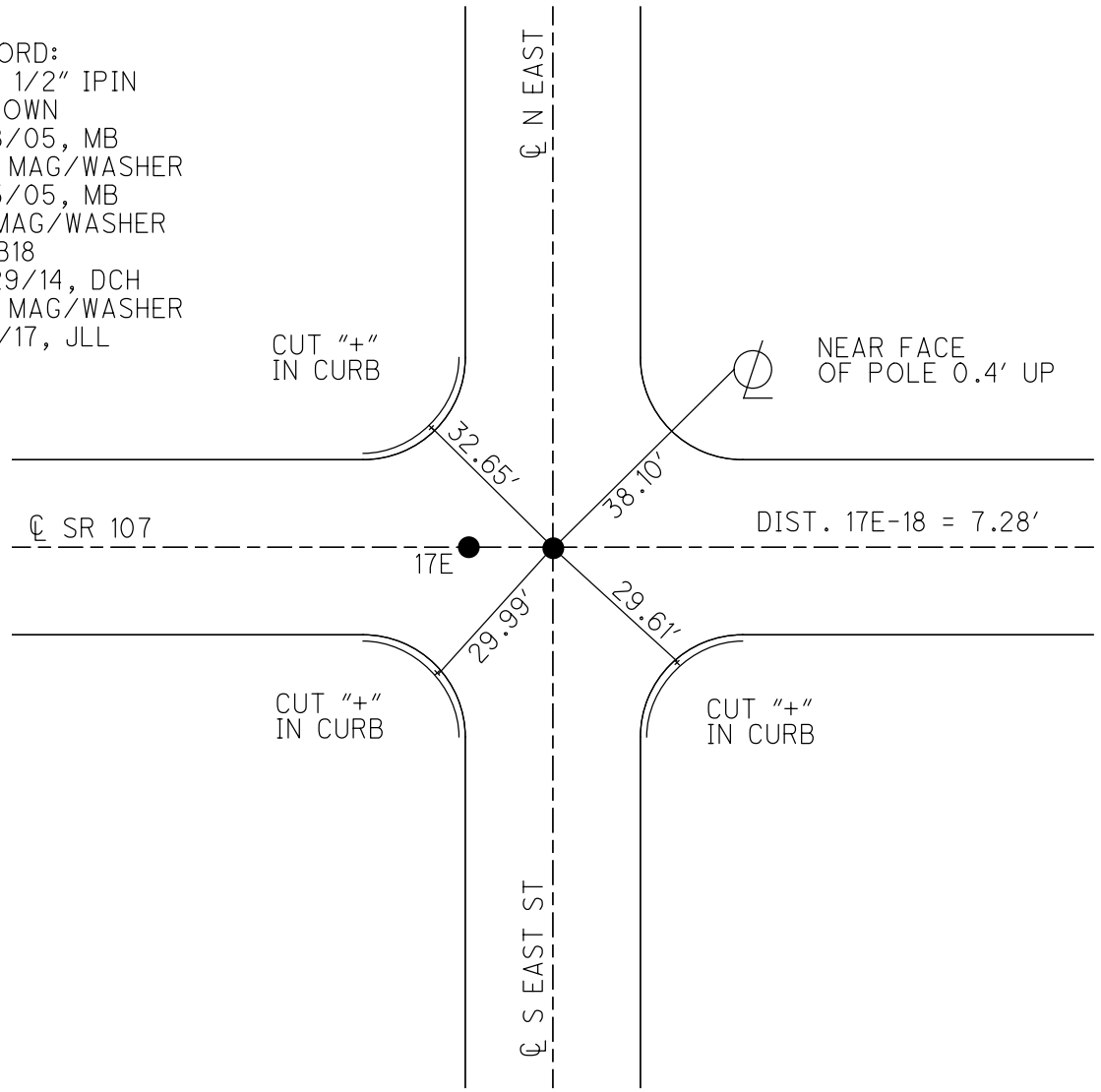
NOTES HOMAN _____ DATE 4/19/17 ROUTE SR 107
 H.C. HOMAN _____ WEATHER CLOUDY COUNTY WILLIAMS
 R.C. HELDMAN _____ TEMP. 65° TOWNSHIP SUPERIOR
 _____ SECTION 11
 _____ T 7 N R 2 E

TYPE MONUMENT MAG/WASHER
~~ON SURFACE~~ - BELOW ON
 LEFT - ☉ PAV'T - RIGHT ON
 - TO - EDGE PAVEMENT
 S.L.M. 453+07.61



GRID: NORTHING: 706387.387 EASTING: 1393087.681

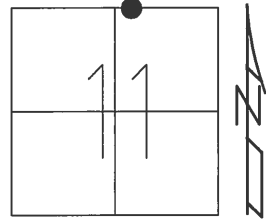
RECORD:
 FD 1 1/2" IPIN
 5" DOWN
 5/18/05, MB
 SET MAG/WASHER
 8/15/05, MB
 FD MAG/WASHER
 REFB18
 12/29/14, DCH
 SET MAG/WASHER
 8/7/17, JLL



O.D.O.T. DISTRICT 2 SURVEY OFFICE (USE ONLY)

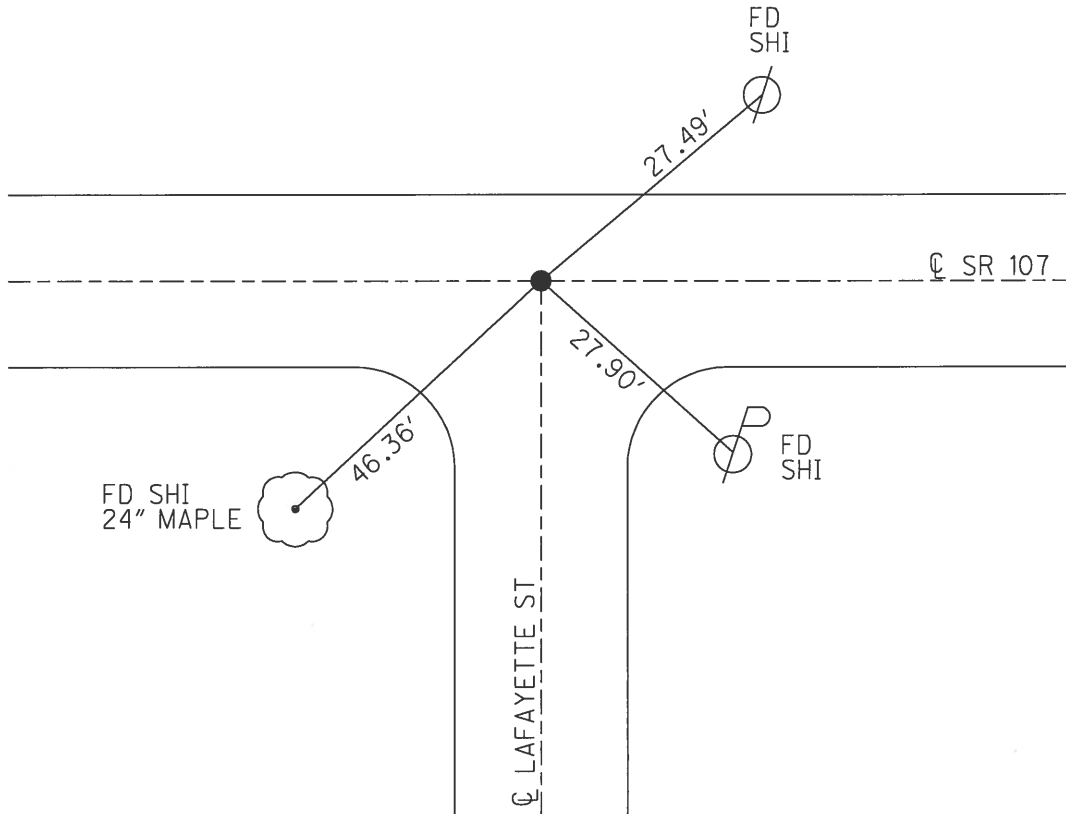
PERSONNEL _____ REFERENCE NO. 18 A SHEET 12 OF 25
NOTES STONE DATE 10/14/80 ROUTE SR 107
H.C. MICHALAK WEATHER CLOUDY COUNTY WILLIAMS
R.C. NEUSER TEMP. 58° TOWNSHIP SUPERIOR
CURTIS SECTION 11
T 7 N R 2 E

TYPE MONUMENT NAIL
ON SURFACE - ~~BELOW~~ ON
LEFT - ☉ PAV'T - RIGHT ON
15.4' TO N EDGE PAVEMENT
S.L.M. 456+58±



Grid: Northing: _____ Easting: _____

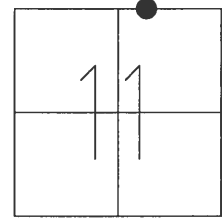
RECORD:
DNF, 5/18/05
12/29/14



O.D.O.T. DISTRICT 2 SURVEY OFFICE (USE ONLY)

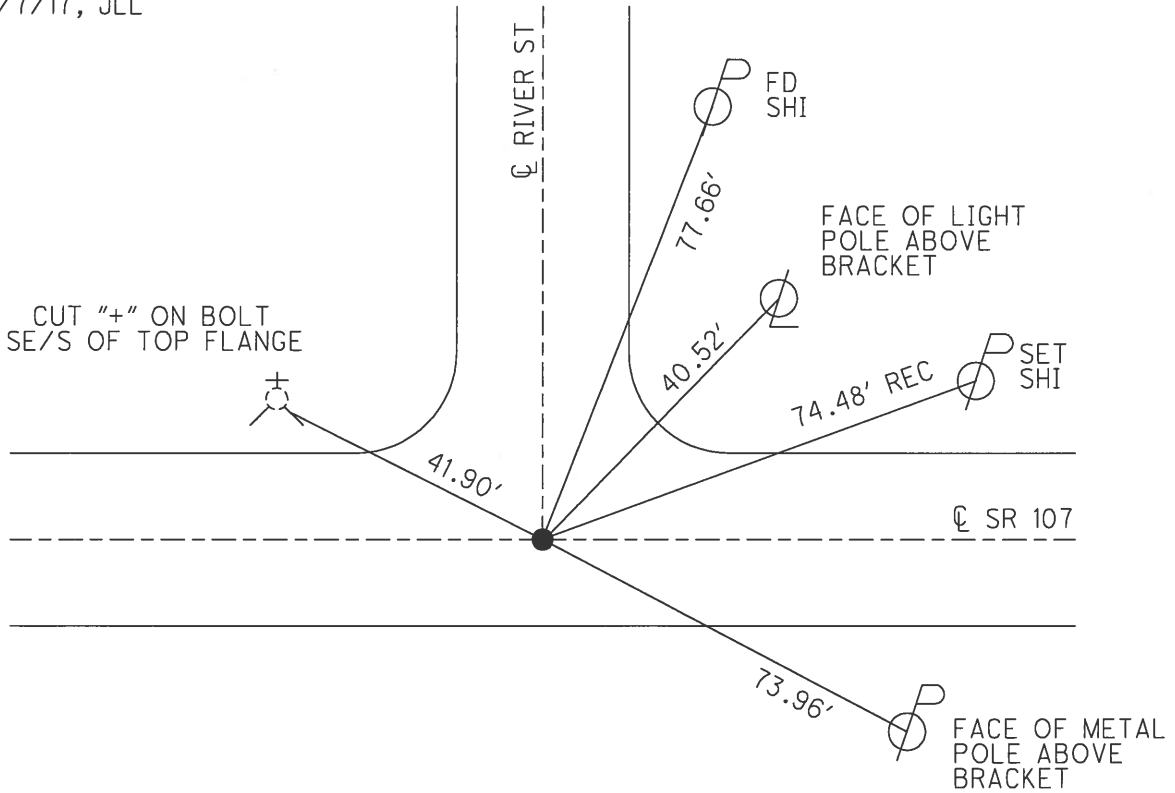
PERSONNEL _____ REFERENCE NO. 18 B SHEET 13 OF 25
 NOTES HOMAN DATE 4/19/17 ROUTE SR 107
 H.C. HOMAN WEATHER CLOUDY COUNTY WILLIAMS
 R.C. HELDMAN TEMP. 65° TOWNSHIP SUPERIOR
 SECTION 11
 T 7 N R 2 E

TYPE MONUMENT MAG/WASHER
 ON SURFACE - ~~BELOW~~ ON
 LEFT - ☉ PAV'T - RIGHT ON
17.1' TO RT EDGE PAVEMENT
 S.L.M. 459+02.83



GRID: NORTHING: 706376.702 EASTING: 1393682.810

RECORD:
 SET MAG/WASHER
 8/15/05, MB
 FD MAG/WASHER
 REFC18
 12/29/14, DCH
 SET MAG/WASHER
 8/7/17, JLL



O.D.O.T. DISTRICT 2 SURVEY OFFICE (USE ONLY)

PERSONNEL _____ REFERENCE NO. 18 C SHEET 14 OF 25

NOTES HOMAN DATE 4/19/17 ROUTE SR 107
H.C. HOMAN WEATHER CLOUDY COUNTY WILLIAMS
R.C. HELDMAN TEMP. 65° TOWNSHIP SUPERIOR
SECTION 11
T 7 N R 2 E

TYPE MONUMENT MONBOX W/IPIN

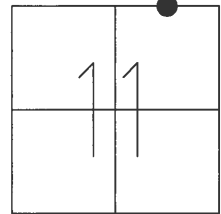
~~ON SURFACE~~ - BELOW 2"

LEFT - ☉ PAV'T - RIGHT ON, 2' E OF ☉ S

- TO - EDGE PAVEMENT

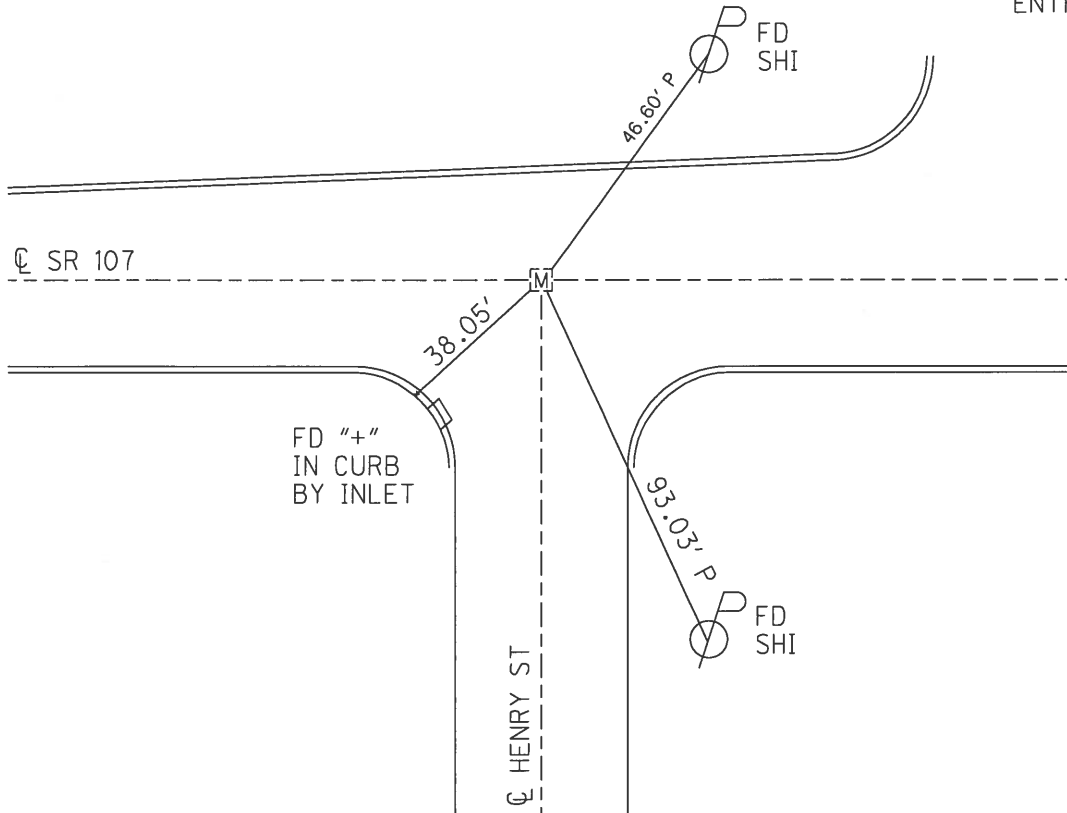
S.L.M. 467+80.97

GRID: NORTHING: 706361.941 EASTING: 1394560.825



RECORD:
FD MON.BOX W/IPIN
5/18/05, MB
REFD18
12/29/14, DCH

WOOD CO.
FAIRGROUND
ENTRANCE



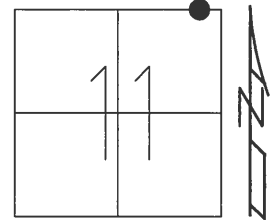
O.D.O.T. DISTRICT 2 SURVEY OFFICE (USE ONLY)

PERSONNEL _____ REFERENCE NO. 18 D SHEET 15 OF 25

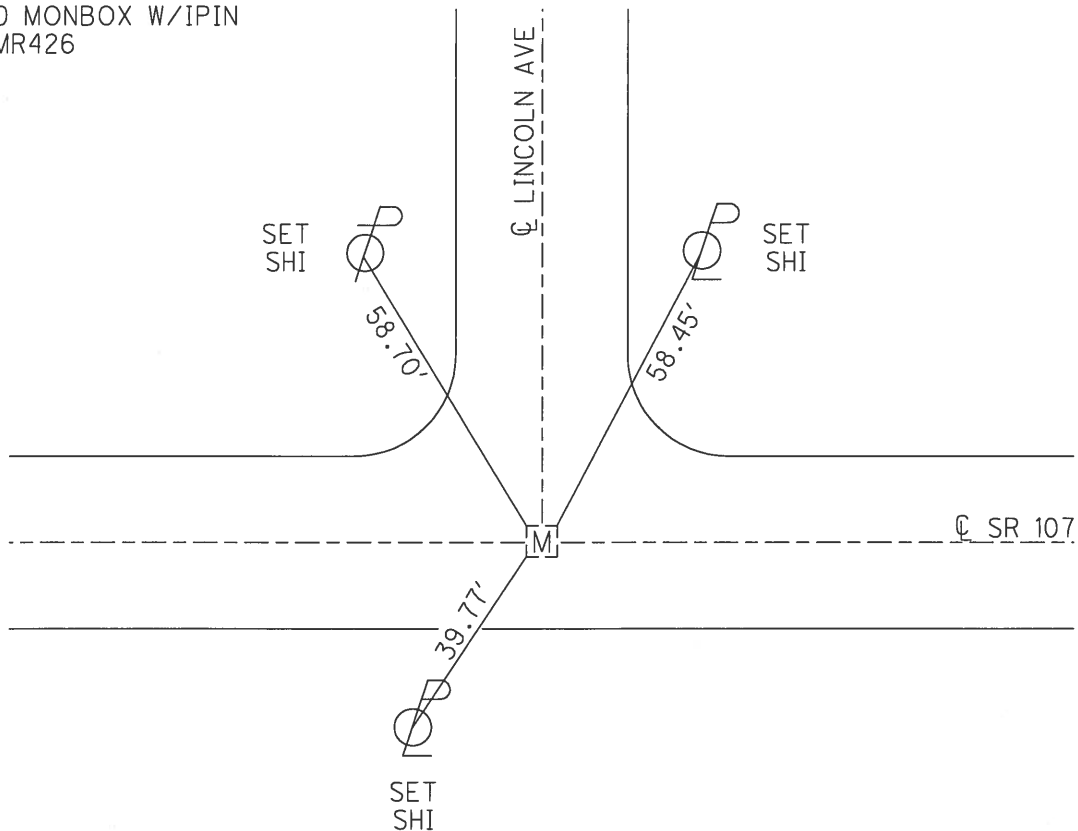
NOTES HOMAN DATE 4/19/17 ROUTE SR 107
H.C. HOMAN WEATHER CLOUDY COUNTY WILLIAMS
R.C. HELDMAN TEMP. 65° TOWNSHIP SUPERIOR
SECTION 11
T 7 N R 2 E

TYPE MONUMENT MONBOX W/IPIN
ON SURFACE - ~~BELOW~~ ON
LEFT - ☉ PAV'T - RIGHT ON
- TO - EDGE PAVEMENT
S.L.M. 474+47.09

GRID: NORTHING: 706353.850 EASTING: 1395226.897



RECORD:
FD MONBOX W/IPIN
JMR426

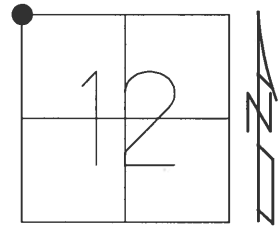


ENTRANCE OLD
ODOT GARAGE

O.D.O.T. DISTRICT 2 SURVEY OFFICE (USE ONLY)

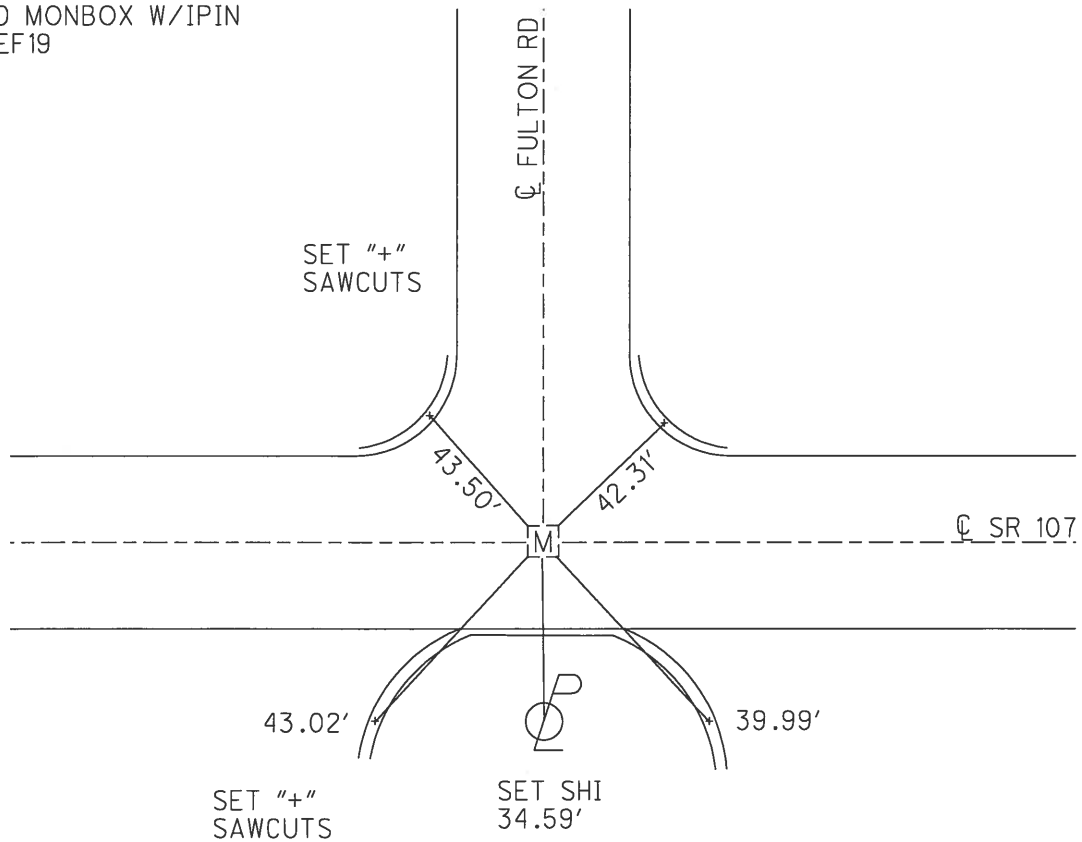
PERSONNEL _____ REFERENCE NO. 19 SHEET 16 OF 25
 NOTES LEU DATE 4/21/17 ROUTE SR 107
 H.C. LEU WEATHER CLOUDY COUNTY WILLIAMS
 R.C. HELDMAN TEMP. 50° TOWNSHIP SUPERIOR
 _____ SECTION 12
 _____ T 7 N R 2 E

TYPE MONUMENT MONBOX W/IPIN
 ON SURFACE - ~~BELOW~~ ON _____
 LEFT - ☉ PAV'T - RIGHT ON _____
 - TO - EDGE PAVEMENT
 S.L.M. 479+33.02



GRID: NORTHING: 706348.170 EASTING: 1395712.791

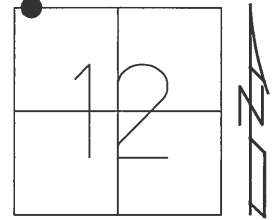
RECORD:
 FD MONBOX W/IPIN
 REF 19



O.D.O.T. DISTRICT 2 SURVEY OFFICE (USE ONLY)

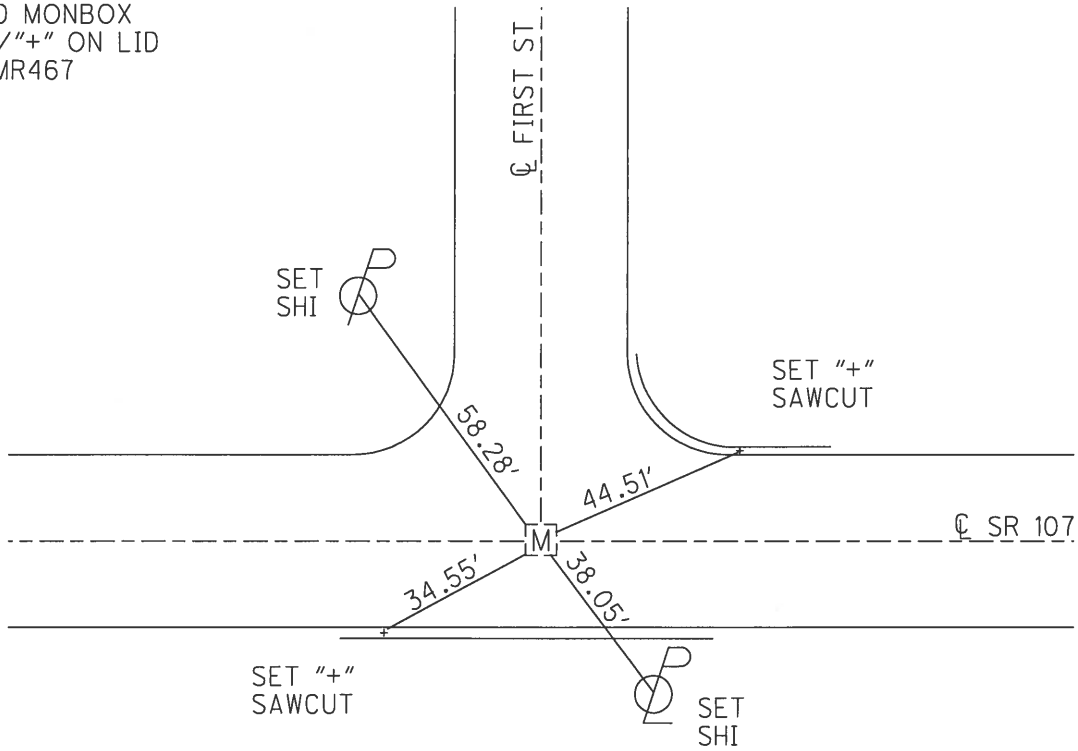
PERSONNEL _____ REFERENCE NO. 19 A SHEET 17 OF 25
 NOTES LEU DATE 4/21/17 ROUTE SR 107
 H.C. LEU WEATHER CLOUDY COUNTY WILLIAMS
 R.C. HELDMAN TEMP. 50° TOWNSHIP SUPERIOR
 SECTION 12
 T 7 N R 2 E

TYPE MONUMENT MONBOX
 ON SURFACE - ~~BELOW~~ ON _____
 LEFT - ☉ PAV'T - RIGHT ON
 - TO - EDGE PAVEMENT
 S.L.M. 482+27.78



GRID: NORTHING: 706339.996 EASTING: 1396007.436

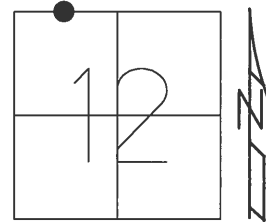
RECORD:
 FD MONBOX
 W/"+" ON LID
 JMR467



O.D.O.T. DISTRICT 2 SURVEY OFFICE (USE ONLY)

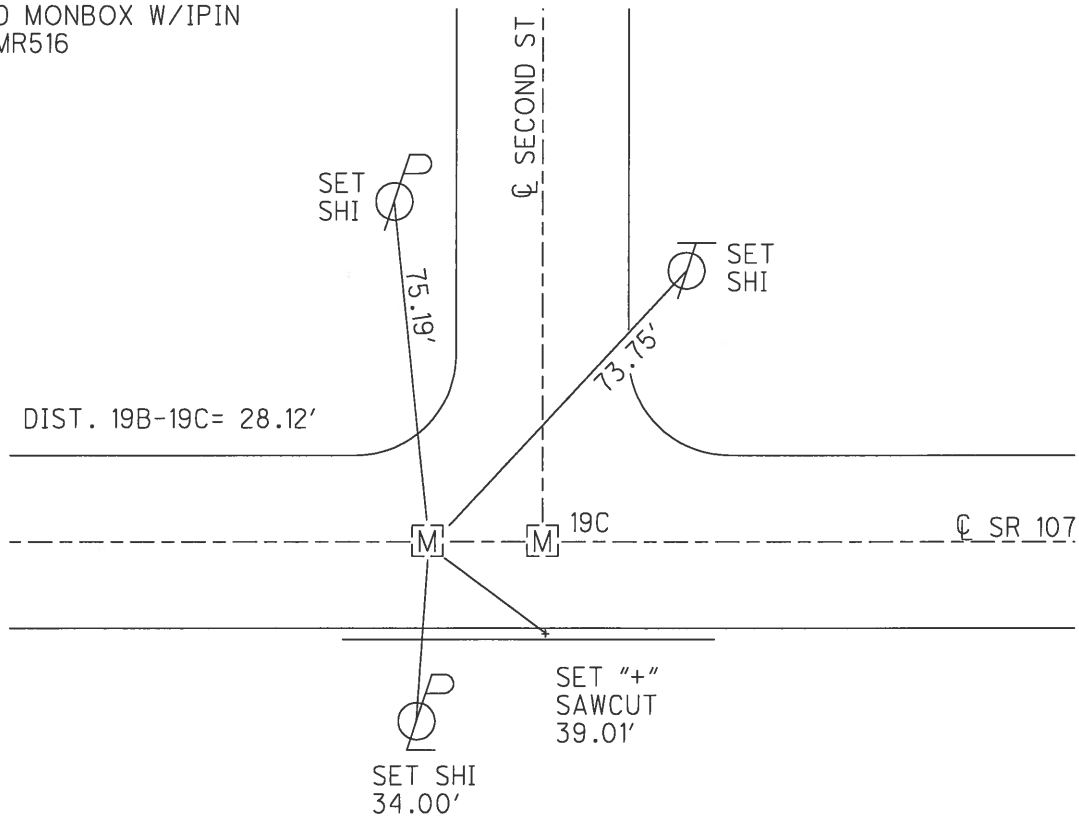
PERSONNEL	REFERENCE NO.	19 B	SHEET	18	OF	25
NOTES	LEU	DATE	4/21/17	ROUTE	SR 107	
H.C.	LEU	WEATHER	CLOUDY	COUNTY	WILLIAMS	
R.C.	HELDMAN	TEMP.	50°	TOWNSHIP	SUPERIOR	
				SECTION	12	
				T	7	N
				R	2	E

TYPE MONUMENT MONBOX W/IPIN
 ON SURFACE - ~~BELOW~~ ON
 LEFT - ☉ PAV'T - RIGHT ON
 TO EDGE PAVEMENT
 S.L.M. 489+99.88



GRID: NORTHING: 706320.088 EASTING: 1396779.277

RECORD:
 FD MONBOX W/IPIN
 JMR516



O.D.O.T. DISTRICT 2 SURVEY OFFICE (USE ONLY)

PERSONNEL _____ REFERENCE NO. 19 C SHEET 19 OF 33

NOTES LEU DATE 4/21/17 ROUTE SR 107

H.C. LEU WEATHER CLOUDY COUNTY WILLIAMS

R.C. HELDMAN TEMP. 50° TOWNSHIP SUPERIOR

SECTION 12

T 7 N R 2 E

TYPE MONUMENT MONBOX W/IPIN

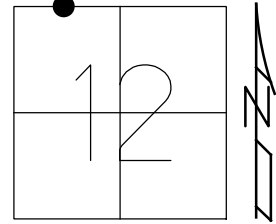
ON SURFACE - ~~BELOW~~ ON

LEFT - CL PAV'T - RIGHT ON

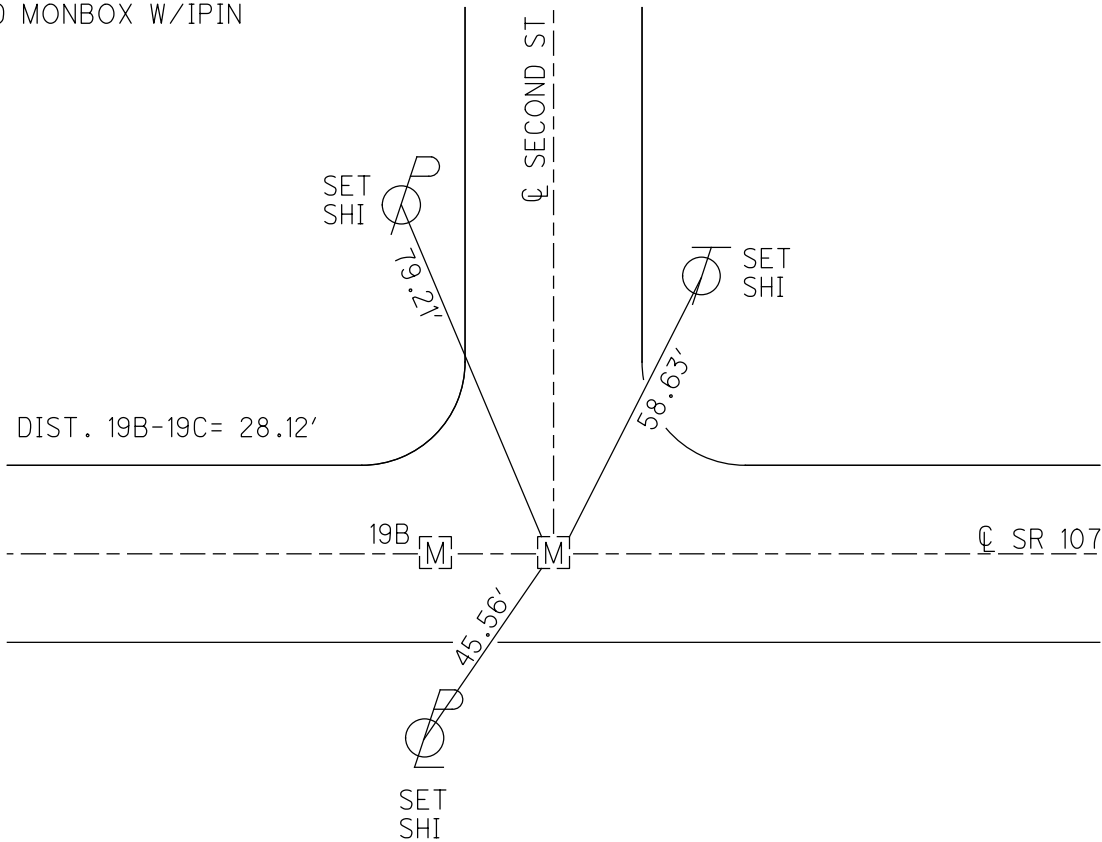
- TO - EDGE PAVEMENT

S.L.M. 490+28

GRID: NORTHING: - _____ EASTING: - _____



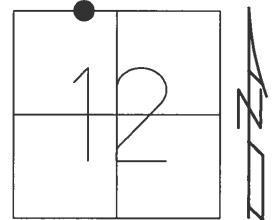
RECORD:
FD MONBOX W/IPIN



O.D.O.T. DISTRICT 2 SURVEY OFFICE (USE ONLY)

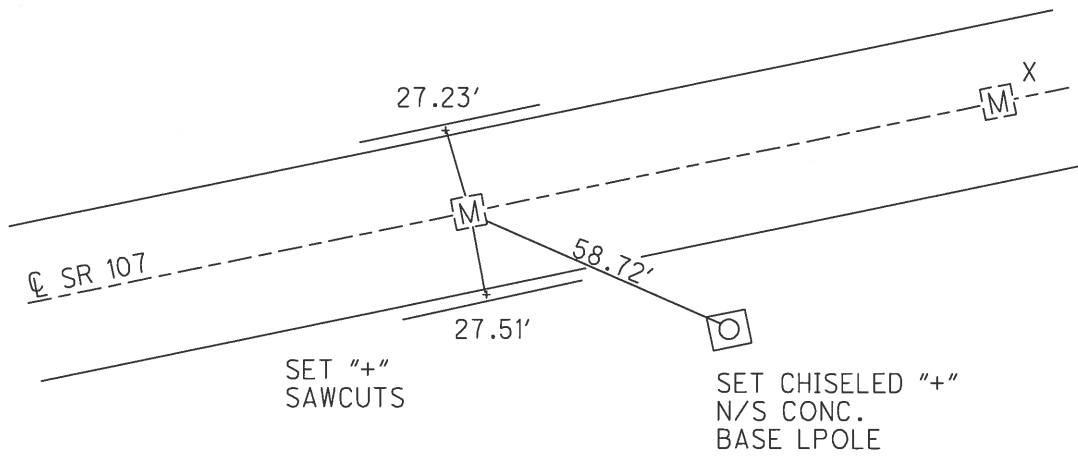
PERSONNEL _____ REFERENCE NO. 19 D SHEET 20 OF 25
 NOTES LEU DATE 4/21/17 ROUTE SR 107
 H.C. LEU WEATHER CLOUDY COUNTY WILLIAMS
 R.C. HELDMAN TEMP. 50° TOWNSHIP SUPERIOR
 _____ SECTION 12
 _____ T 7 N R 2 E

TYPE MONUMENT MONBOX
 ON SURFACE - ~~BELOW~~ ON
 LEFT - ☉ PAV'T - RIGHT ON
- TO - EDGE PAVEMENT
 S.L.M. 498+04.54



GRID: NORTHING: 706355.079 EASTING: 1397582.518

RECORD:
 FD MONBOX
 W/"+" ON LID
 JMR558

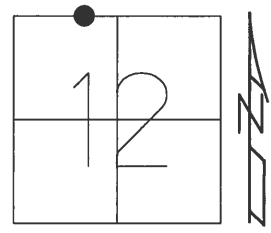


O.D.O.T. DISTRICT 2 SURVEY OFFICE (USE ONLY)

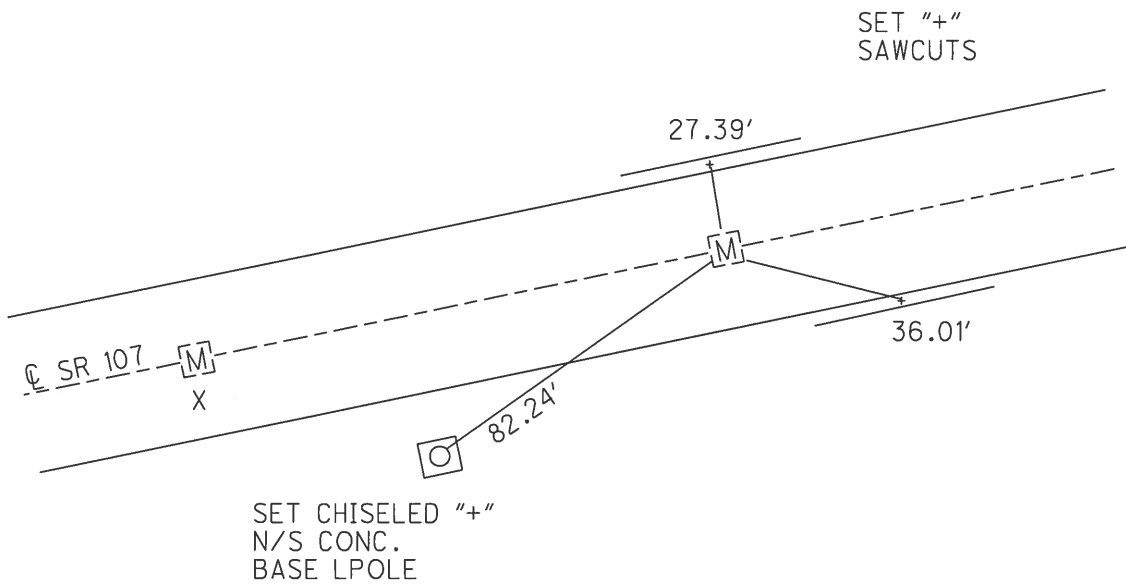
PERSONNEL _____ REFERENCE NO. 19 E SHEET 21 OF 25

NOTES LEU DATE 4/21/17 ROUTE SR 107
 H.C. LEU WEATHER CLOUDY COUNTY WILLIAMS
 R.C. HELDMAN TEMP. 50° TOWNSHIP SUPERIOR
 _____ SECTION 12
 _____ T 7 N R 2 E

TYPE MONUMENT MONBOX W/IPIN
 ON SURFACE - ~~BELOW~~ ON
 LEFT - ☉ PAV'T - RIGHT ON
_____ TO _____ EDGE PAVEMENT
 S.L.M. 499+25.69
 GRID: NORTHING: 706368.555 EASTING: 1397702.913



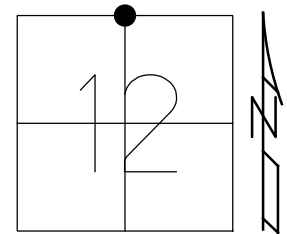
RECORD:
 FD MONBOX
 W/1" IPIN
 JMR562



O.D.O.T. DISTRICT 2 SURVEY OFFICE (USE ONLY)

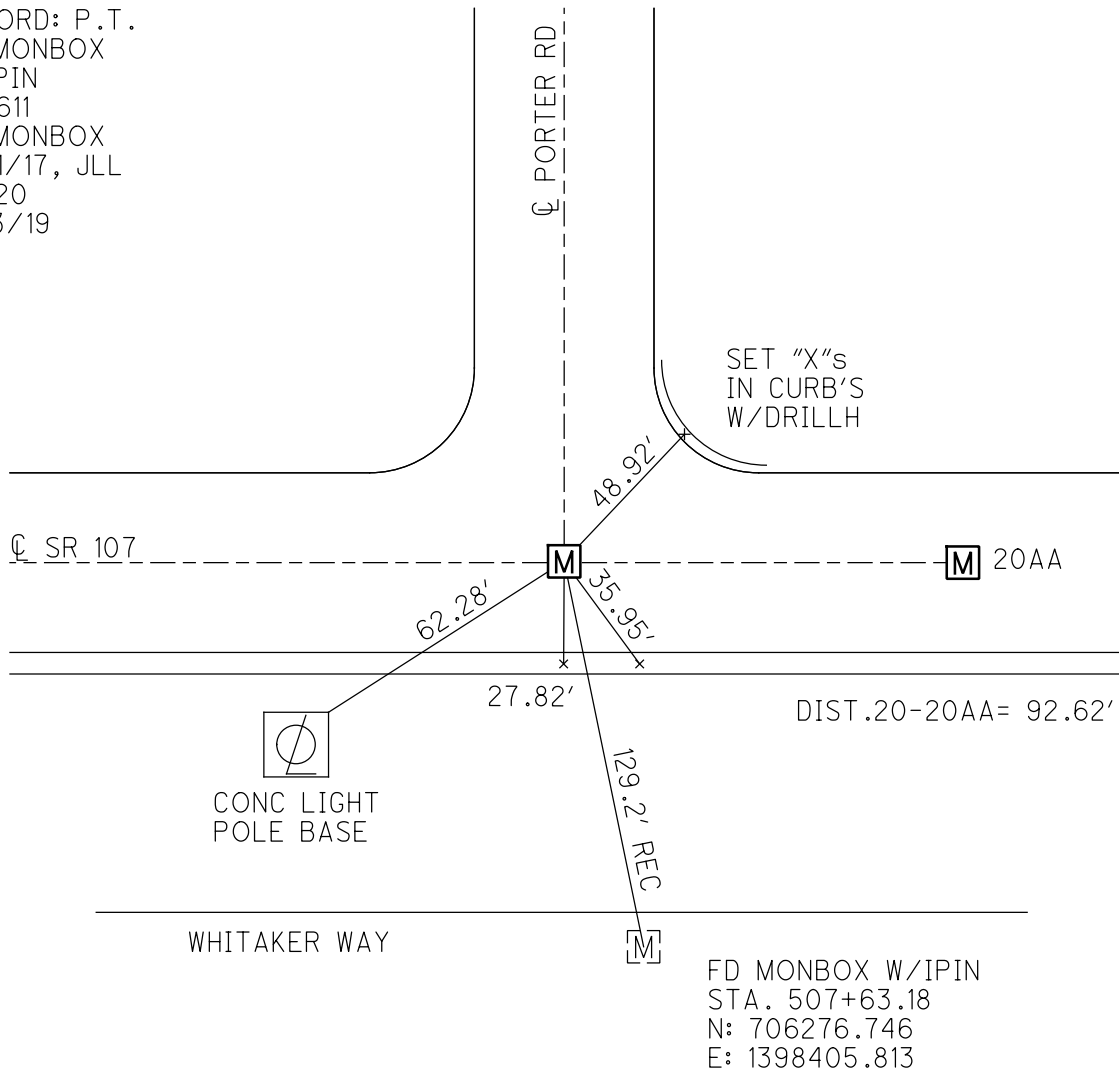
PERSONNEL _____ REFERENCE NO. 20 SHEET 20 OF 31
 NOTES LEU DATE 3/4/19 ROUTE SR 107
 H.C. LEU WEATHER PARTLY CLOUDY COUNTY WILLIAMS
 R.C. JAMES TEMP. 13° TOWNSHIP SUPERIOR
 DWG BY NIESE PID 101346 SECTION 12
 T 7 N R 2 E

TYPE MONUMENT MONBOX W/ 1' IPIN
 ON SURFACE - ~~BELOW~~ ON
 OFFSET ☐ PAVEMENT ON LT : RT
- TO - EDGE PAVEMENT
 STATION: 506+34.07



HORZ. DATUM: NAD83(2011) GEOID: 2012A
 GRID: NORTHING: 706405.868 EASTING: 1398410.056

RECORD: P.T.
 FD MONBOX
 W/IPIN
 JMR611
 FD MONBOX
 4/21/17, JLL
 REF20
 11/13/19



O.D.O.T. DISTRICT 2 SURVEY OFFICE (USE ONLY)

PERSONNEL

REFERENCE NO. 20AA

SHEET 21 OF 31

NOTES LEU

DATE 3/4/19

ROUTE SR 107

H.C. LEU

WEATHER PARTLY CLOUDY

COUNTY WILLIAMS

R.C. JAMES

TEMP. 13°

TOWNSHIP SUPERIOR

DWG BY NIESE

PID 101346

SECTION 12

T 7 N R 2 E

TYPE MONUMENT MONBOX W/ 1" IPIN

ON SURFACE - ~~BELOW~~ ON

OFFSET \varnothing PAVEMENT - LT : RT

- TO - EDGE PAVEMENT

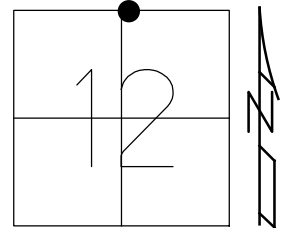
STATION: 507+26.69

HORIZ.DATUM: NAD83(2011)

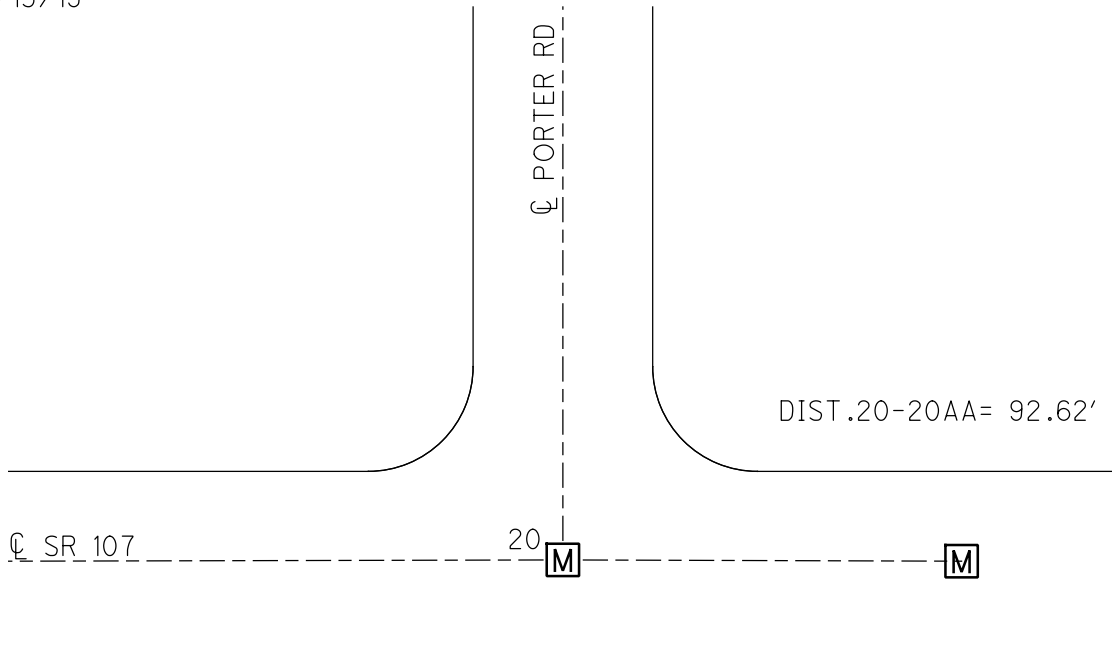
GEOID: 2012A

GRID: NORTHING: 706404.226

EASTING: 1398502.656



RECORD: P.T.
 FD MONBOX
 W/IPIN
 JMR611
 COULD NOT OPEN
 REFAA20
 11/13/19



O.D.O.T. DISTRICT 2 SURVEY OFFICE (USE ONLY)

PERSONNEL

REFERENCE NO. 20 AB

SHEET 22 OF 31

NOTES LEU

DATE 3/5/19

ROUTE SR 107

H.C. LEU

WEATHER LIGHT SNOW

COUNTY WILLIAMS

R.C. JAMES

TEMP. 10°

TOWNSHIP SUPERIOR

SECTION 12

DWG BY NIESE PID 101346

T 7 N R 2 E

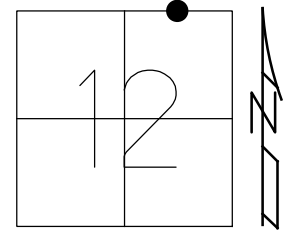
TYPE MONUMENT MONBOX

ON SURFACE - ~~BELOW~~ ON

OFFSET ☉ PAVEMENT ON LT : RT

- TO - EDGE PAVEMENT

STATION: 516+01



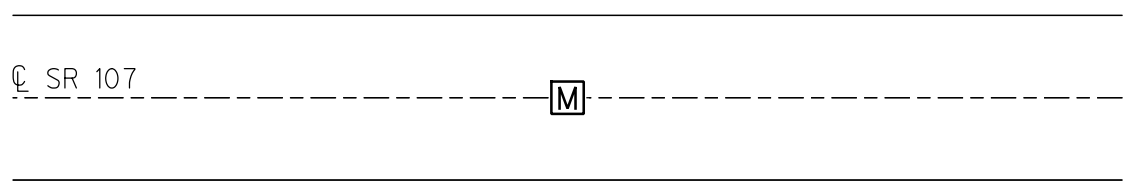
HORZ.DATUM: NAD83(2011)

GEOID: 2012A

GRID: NORTHING: 706381.802

EASTING: 1399375.065

RECORD:
FD MONBOX
COULD NOT OPEN
SHOT CTR OF LID
REFAB20
3/5/19, JLL
DID NOT OPEN
11/13/19



O.D.O.T. DISTRICT 2 SURVEY OFFICE (USE ONLY)

PERSONNEL

REFERENCE NO. 20 AC

SHEET 23 OF 31

NOTES LEU

DATE 3/5/19

ROUTE SR 107

H.C. LEU

WEATHER LIGHT SNOW

COUNTY WILLIAMS

R.C. JAMES

TEMP. 10°

TOWNSHIP SUPERIOR

DWG BY NIESE PID 101346

SECTION 12

T 7 N R 2 E

TYPE MONUMENT MONBOX W/ 1" IPIN

ON SURFACE - ~~BELOW~~ ON

OFFSET ☉ PAVEMENT ON LT : RT

- TO - EDGE PAVEMENT

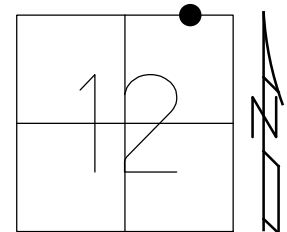
STATION: 522+00

HORZ.DATUM: NAD83(2011)

GEOID: 2012A

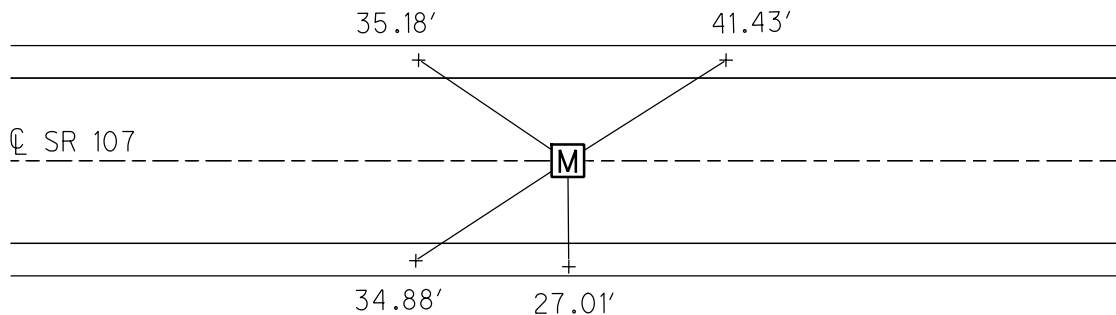
GRID: NORTHING: 706366.441

EASTING: 1399974.768



RECORD:
FD MONBOX
W/1" IPIN
REFAC
3/5/19, JLL
BURIED
11/13/19

SET "+ "s
CURBS



O.D.O.T. DISTRICT 2 SURVEY OFFICE (USE ONLY)

PERSONNEL

REFERENCE NO. 20 A

SHEET 24 OF 31

NOTES JAMES

DATE 3/4/19

ROUTE SR 107

H.C. LEU

WEATHER PTLY CLOUDY

COUNTY WILLIAMS

R.C. JAMES

TEMP. 14°

TOWNSHIP SUPERIOR

DWG BY NIESE

PID 101346

SECTION 1

T 7 N R 2 E

TYPE MONUMENT MONBOX W/ 1" IPIN

ON SURFACE - ~~BELOW~~ ON

OFFSET ☉ PAVEMENT ON LT : RT

26.8' TO RT EDGE PAVEMENT

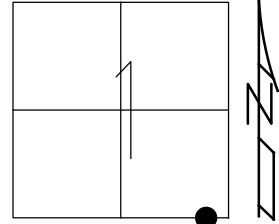
STATION: 526+77.40

HORIZ.DATUM: NAD83(2011)

GEOID: 2012A

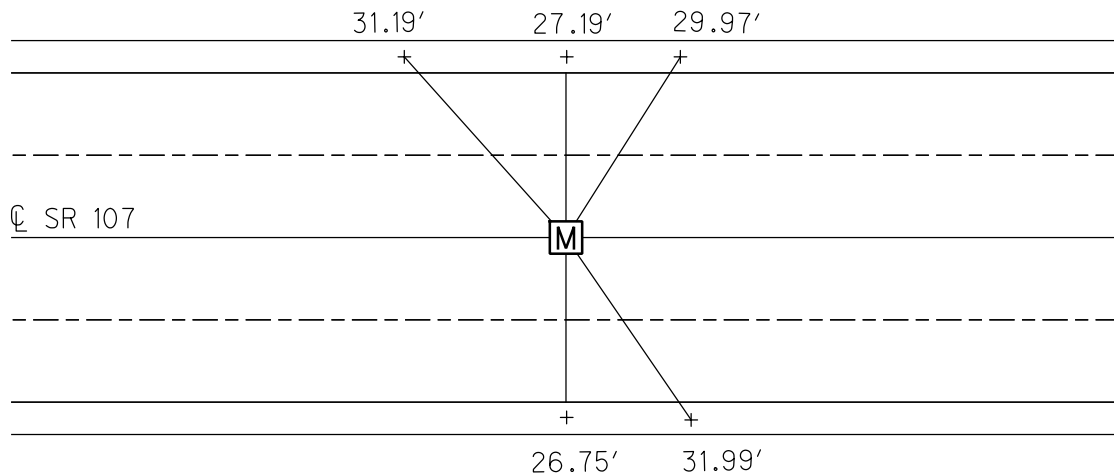
GRID: NORTHING: 706354.316

EASTING: 1400451.985



RECORD: P.C.
 STA 526+77.40
 OPENED & CHISELED
 "+" ON LID FOR POINT
 12/9/93, MB
 FD MONBOX
 W/ 1" IPIN
 FEFA20
 3/4/19, JLL

SET "+"s
 W/DRILLH
 CURB



O.D.O.T. DISTRICT 2 SURVEY OFFICE (USE ONLY)

PERSONNEL

REFERENCE NO. 20 B

SHEET 25 OF 31

NOTES JAMES

DATE 3/13/19

ROUTE SR 107

H.C. LEU

WEATHER CLOUDY

COUNTY WILLIAMS

R.C. JAMES

TEMP. 42°

TOWNSHIP SUPERIOR

SECTION 1

DWG BY NIESE PID 101346

T 7 N R 2 E

TYPE MONUMENT MONBOX

ON SURFACE - ~~BELOW~~ ON

OFFSET ☉ PAVEMENT ON LT : RT

- TO - EDGE PAVEMENT

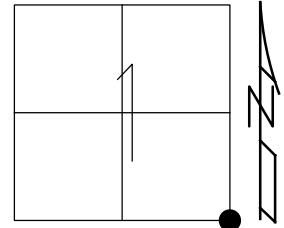
STATION: 533+35.29

HORIZ.DATUM: NAD83(2011)

GEOID: 2012A

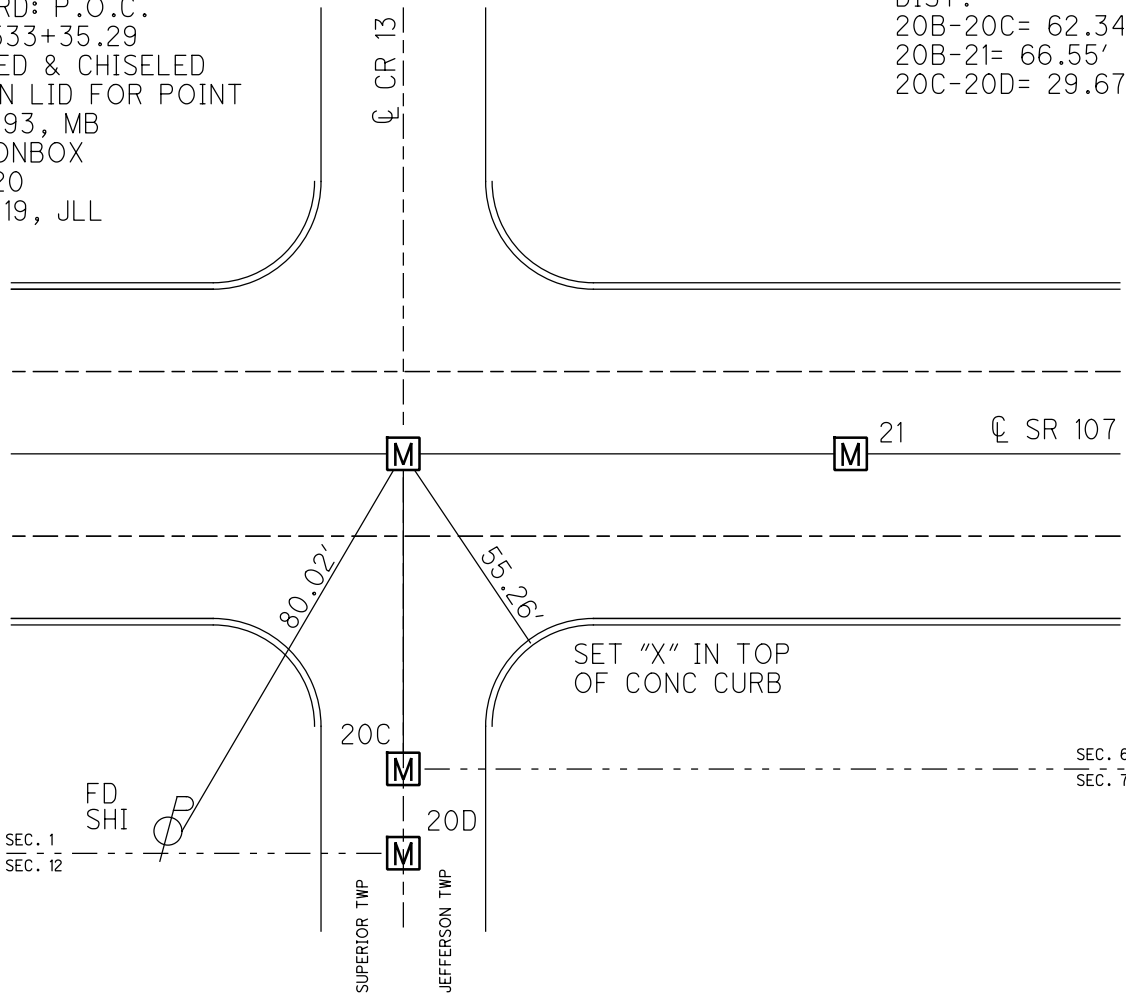
GRID: NORTHING: 706299.650

EASTING: 1401107.188



RECORD: P.O.C.
STA.533+35.29
OPENED & CHISELED
" + " ON LID FOR POINT
12/9/93, MB
FD MONBOX
REFB20
3/13/19, JLL

DIST.
20B-20C= 62.34'
20B-21= 66.55'
20C-20D= 29.67'



O.D.O.T. DISTRICT 2 SURVEY OFFICE (USE ONLY)

PERSONNEL

REFERENCE NO. 20 C

SHEET 26 OF 31

NOTES JAMES

DATE 3/5/19

ROUTE SR 107

H.C. LEU

WEATHER WINDY

COUNTY WILLIAMS

R.C. JAMES

TEMP. 17°

TOWNSHIP SUPERIOR

DWG BY NIESE

PID 101346

SECTION 1

T 7 N R 2 E

TYPE MONUMENT MONBOX

ON SURFACE - ~~BELOW~~ ON

OFFSET \varnothing PAVEMENT 62.34' ~~LT~~ : RT

- TO - EDGE PAVEMENT

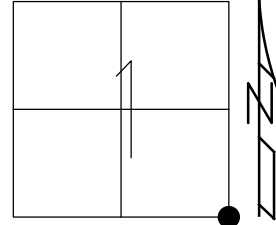
STATION: 533+35.29

HORIZ.DATUM: NAD83(2011)

GEOID: 2021A

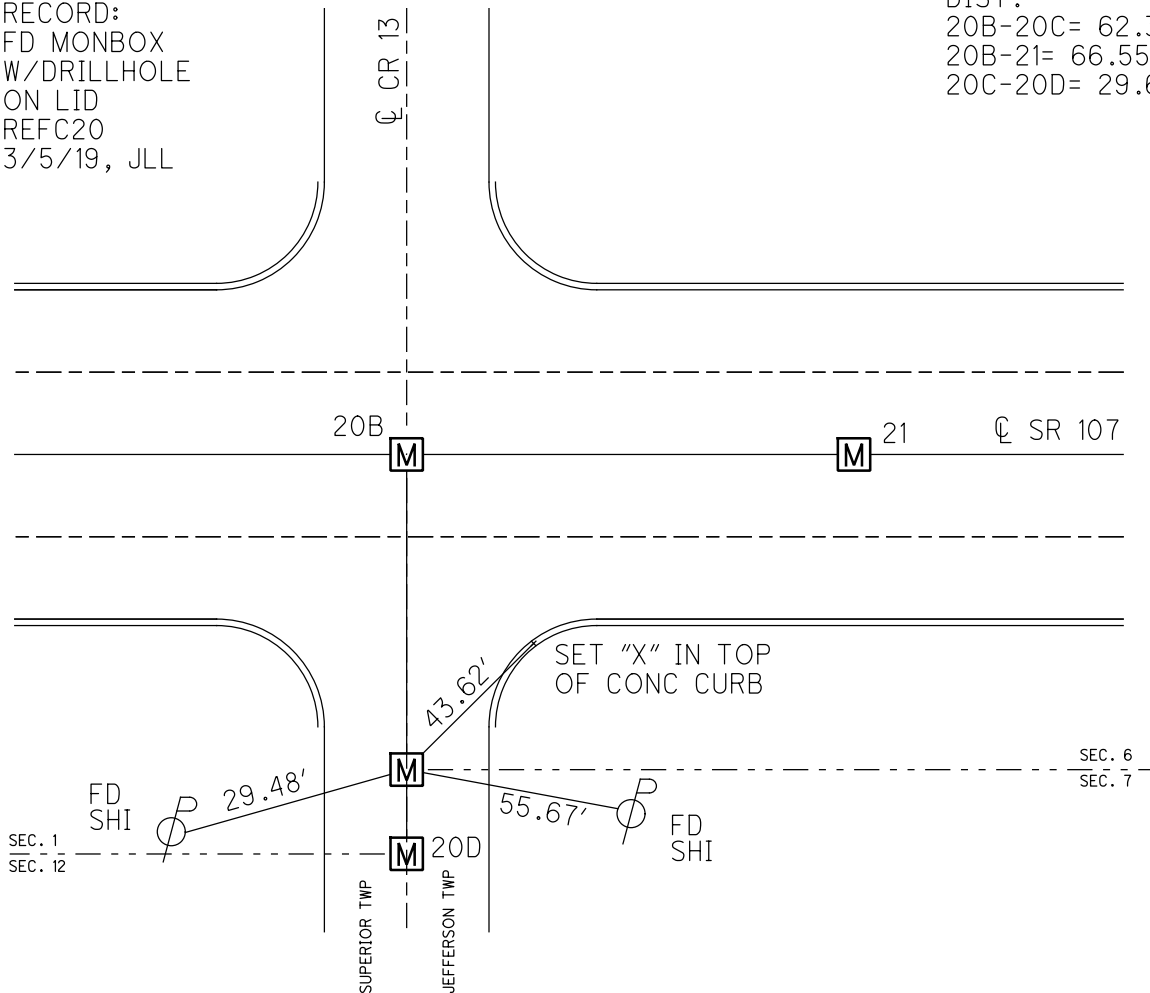
GRID: NORTHING: 706237.324

EASTING: 1401106.147



RECORD:
FD MONBOX
W/DRILLHOLE
ON LID
REFC20
3/5/19, JLL

DIST.
20B-20C= 62.34'
20B-21= 66.55'
20C-20D= 29.67'



O.D.O.T. DISTRICT 2 SURVEY OFFICE (USE ONLY)

PERSONNEL

REFERENCE NO. 20 D

SHEET 27 OF 31

NOTES JAMES

DATE 3/5/19

ROUTE SR 107

H.C. LEU

WEATHER WINDY

COUNTY WILLIAMS

R.C. JAMES

TEMP. 17°

TOWNSHIP SUPERIOR

SECTION 1

DWG BY NIESE

PID 101346

T N R 2 E

TYPE MONUMENT MONBOX

ON SURFACE - ~~BELOW~~ ON

OFFSET Q PAVEMENT 92.01' ~~±~~ : RT

- TO - EDGE PAVEMENT

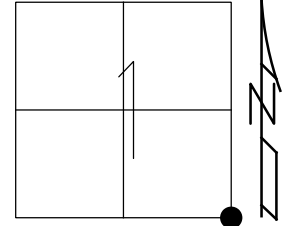
STATION: 533+35.29

HORZ. DATUM: NAD83(2011)

GEOID: 2012A

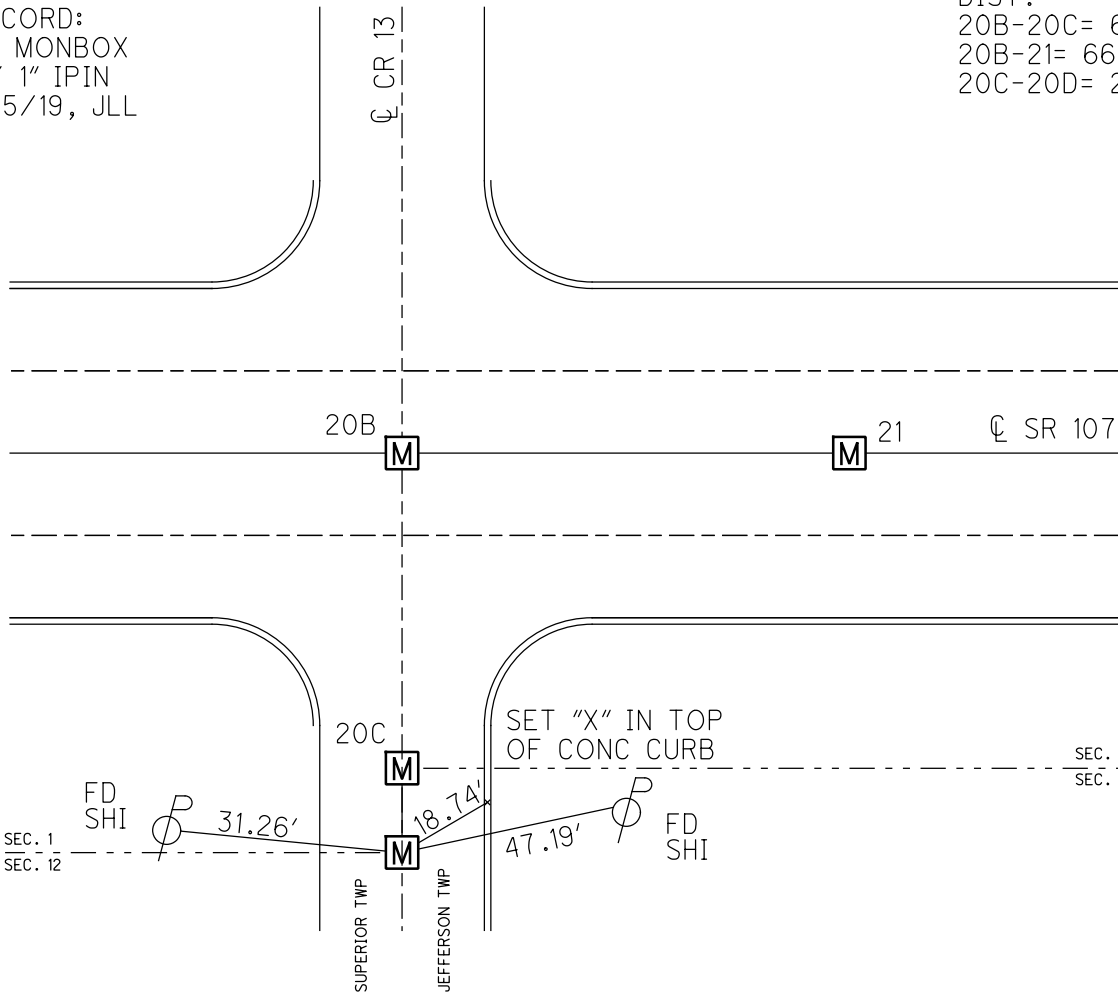
GRID: NORTHING: 706207.664

EASTING: 1401105.914



RECORD:
FD MONBOX
W/ 1" IPIN
3/5/19, JLL

DIST.
20B-20C= 62.34'
20B-21= 66.55'
20C-20D= 29.67'



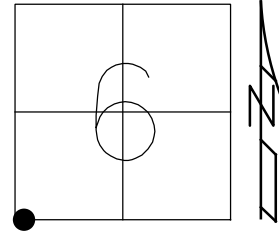
SEC. 1
SEC. 12

SEC. 6
SEC. 7

O.D.O.T. DISTRICT 2 SURVEY OFFICE (USE ONLY)

PERSONNEL _____ REFERENCE NO. 21 SHEET 28 OF 31
 NOTES JAMES DATE 3/4/19 ROUTE SR 107
 H.C. LEU WEATHER WINDY COUNTY WILLIAMS
 R.C. JAMES TEMP. 14° TOWNSHIP JEFFERSON
 DWG BY NIESE PID 101346 SECTION 6
 T 7 N R 3 E

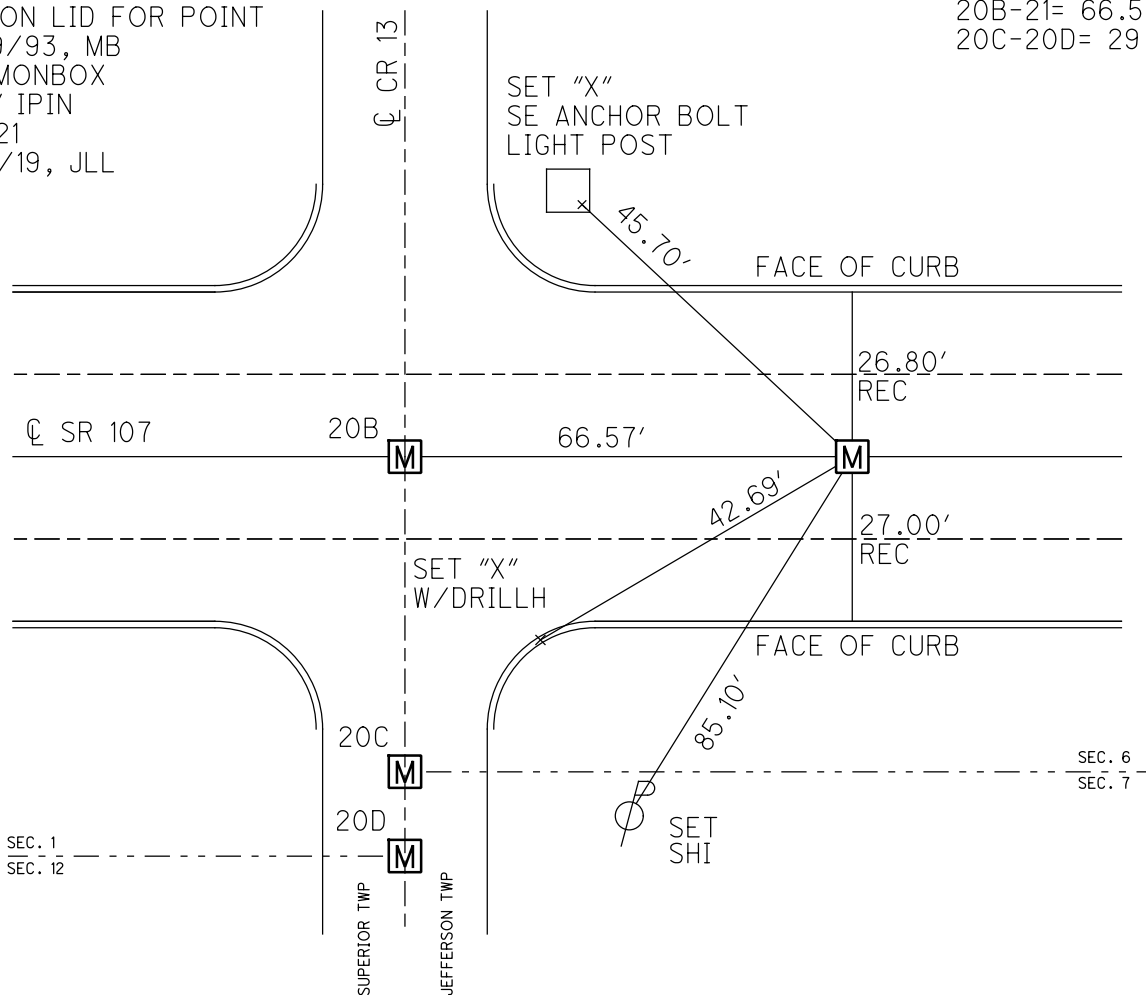
TYPE MONUMENT MONBOX W/1" IPIN
 ON SURFACE - ~~BELOW~~ ON
 OFFSET ☉ PAVEMENT ON LT : RT
- TO - EDGE PAVEMENT
 STATION: 535+01.81



HORZ. DATUM: NAD83(2011) GEOID: 2012A
 GRID: NORTHING: 706290.114 EASTING: 1401173.047

RECORD: P.T.
 STA. 535+01.81
 OPENED & CHISELED
 "+" ON LID FOR POINT
 12/9/93, MB
 FD MONBOX
 W/1" IPIN
 REF21
 3/4/19, JLL

DIST.
 20B-20C = 62.34'
 20B-21 = 66.55'
 20C-20D = 29.67'



O.D.O.T. DISTRICT 2 SURVEY OFFICE (USE ONLY)

PERSONNEL

REFERENCE NO. 21 A

SHEET 29 OF 31

NOTES JAMES

DATE 3/5/19

ROUTE SR 107

H.C. LEU

WEATHER WINDY

COUNTY WILLIAMS

R.C. JAMES

TEMP. 16°

TOWNSHIP JEFFERSON

DWG BY NIESE

PID 101346

SECTION 6

T 7 N R 3 E

TYPE MONUMENT MONBOX W/ 1" IPIN

ON SURFACE - ~~BELOW~~ ON

OFFSET ☉ PAVEMENT ON LT : RT

21.0' TO RT EDGE PAVEMENT

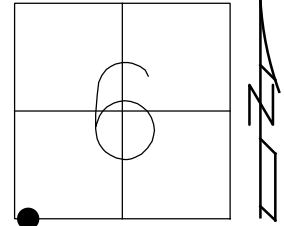
STATION: 535+40.32

HORZ. DATUM: NAD83(2011)

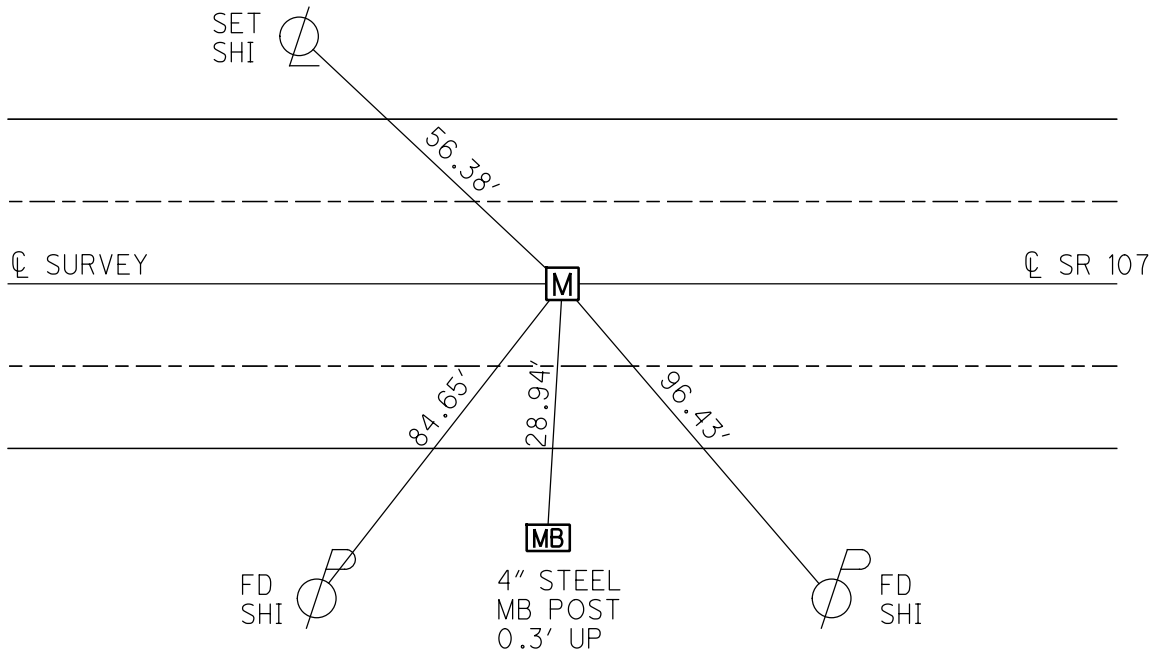
GEOID: 2012A

GRID: NORTHING: 706269.180

EASTING: 1401309.995



RECORD: P.C.
 OPENED & CHISELED
 "+" ON LID FOR POINT
 12/9/93, MB
 FD MONBOX
 W/1" IPIN
 REFA21
 3/5/19, JLL



O.D.O.T. DISTRICT 2 SURVEY OFFICE (USE ONLY)

PERSONNEL

REFERENCE NO. 21 B

SHEET 30 OF 31

NOTES JAMES

DATE 3/5/19

ROUTE SR 107

H.C. LEU

WEATHER WINDY

COUNTY WILLIAMS

R.C. JAMES

TEMP. 16°

TOWNSHIP JEFFERSON

DWG BY NIESE

PID 101346

SECTION 6

T 7 N R 3 E

TYPE MONUMENT MONBOX

ON SURFACE - ~~BELOW~~ ON

OFFSET ☑ PAVEMENT ON LT : RT

- TO - EDGE PAVEMENT

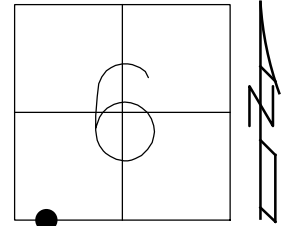
STATION: 540+69

HORZ.DATUM: NAD83(2011)

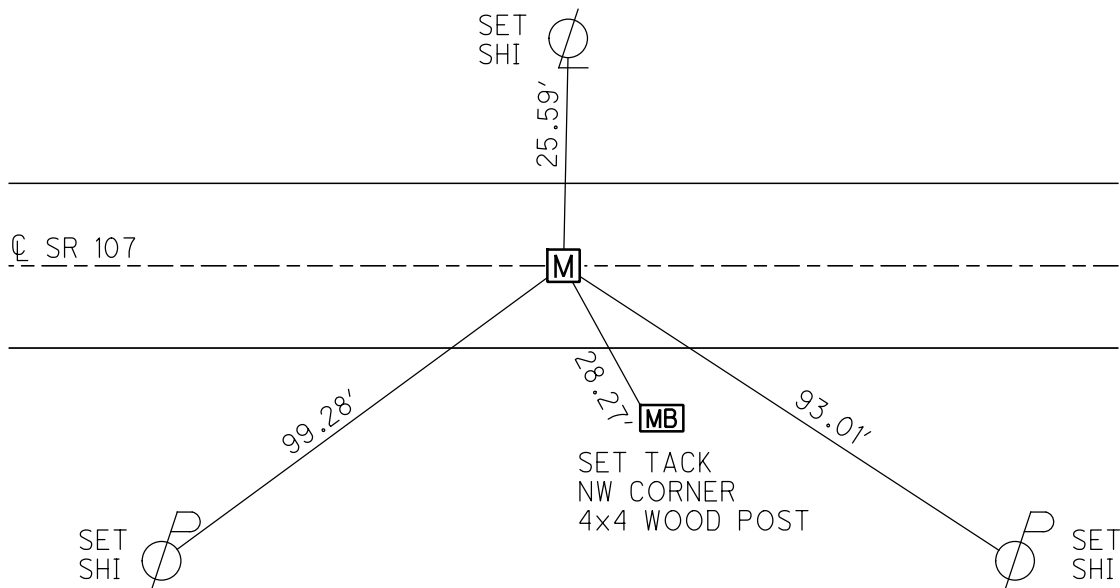
GEOID: 2012A

GRID: NORTHING: 706224.540

EASTING: 1401834.027



RECORD:
FD MONBOX
REFB21
3/5/19, JLL



O.D.O.T. DISTRICT 2 SURVEY OFFICE (USE ONLY)

PERSONNEL

REFERENCE NO. 22

SHEET 31 OF 31

NOTES JAMES
 H.C. LEU
 R.C. JAMES

DATE 3/5/19
 WEATHER CLOUDY
 TEMP. 14°

ROUTE SR 107
 COUNTY WILLIAMS
 TOWNSHIP JEFFERSON
 SECTION 6
 T 7 N R 3 E

DWG BY NIESE PID 101346

TYPE MONUMENT MAG/WASHER

ON SURFACE - ~~BELOW~~ ON

OFFSET C PAVEMENT ON LT : RT
10.5' TO LT EDGE PAVEMENT

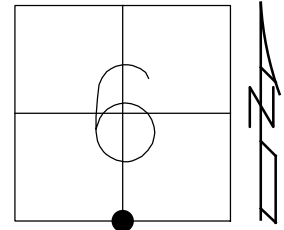
STATION: 557+00.20

HORZ.DATUM: NAD83(2011)

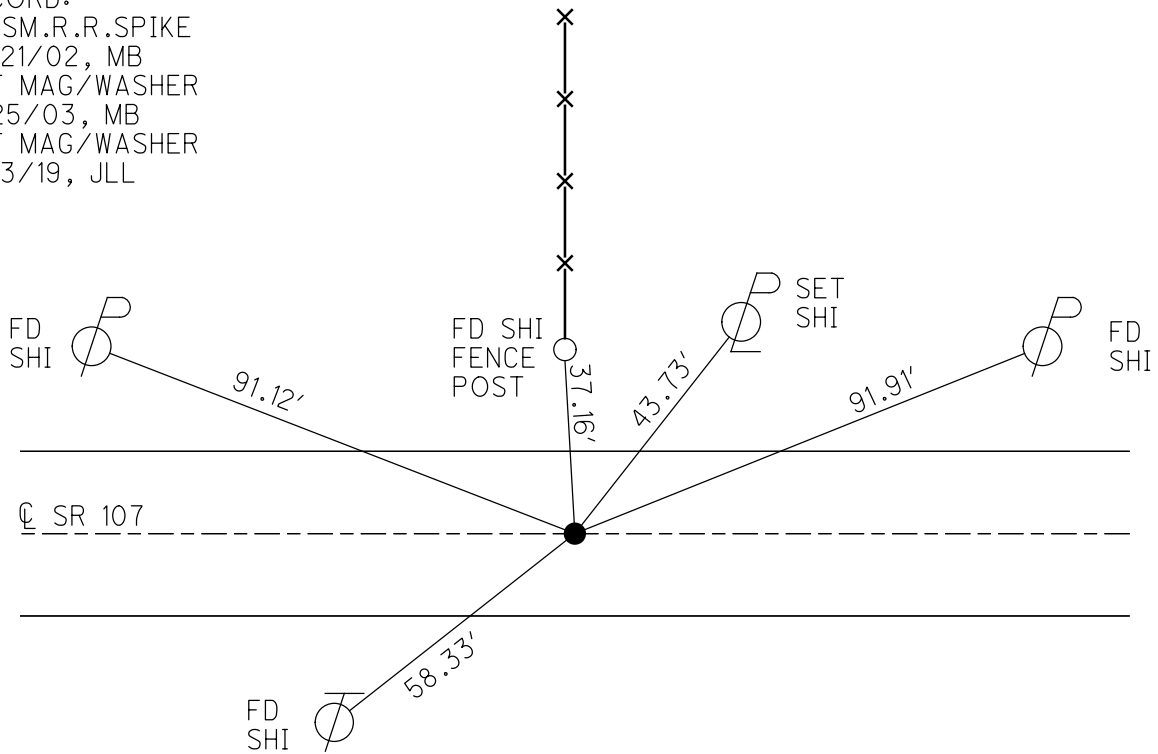
GEOID: 2012A

GRID: NORTHING: 706196.052

EASTING: 1403477.413



RECORD:
 FD SM.R.R.SPIKE
 10/21/02, MB
 SET MAG/WASHER
 8/25/03, MB
 SET MAG/WASHER
 11/13/19, JLL



O.D.O.T. DISTRICT 2 SURVEY OFFICE (USE ONLY)

PERSONNEL

REFERENCE NO. 23

SHEET 1 OF 1

NOTES BARNHISEL

DATE 12/6/93

ROUTE SR 107

H.C. VAN DUSEN

WEATHER RAIN

COUNTY WILLIAMS

R.C. CORDES

TEMP. 40°

TOWNSHIP JEFFERSON

SECTION 8

DWG BY NIESE PID 101346

T 7 N R 3 E

TYPE MONUMENT P.K. NAIL

ON SURFACE - ~~BELOW~~ ON

OFFSET ϕ PAVEMENT ON LT : RT

- TO - EDGE PAVEMENT

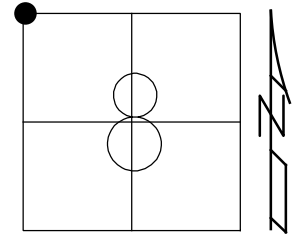
STATION: 583+62.23

HORZ.DATUM: NAD83(2011)

GEOID: 2012A

GRID: NORTHING: 706139.580

EASTING: 1406138.574



RECORD:
FD MONBOX
W/1" IPIN
REF23
3/13/19, JLL

