

O.D.O.T. DISTRICT 2 SURVEY OFFICE (USE ONLY)

PERSONNEL

REFERENCE NO. 2

SHEET 2 OF 16

NOTES RHOADES

DATE 9/27/18

ROUTE SR 107

H.C. O'DONNELL

WEATHER CLOUDY

COUNTY WILLIAMS

R.C. RHOADES

TEMP. 51°

TOWNSHIP FLORENCE

SECTION 4

DWG BY NIESE PID 105474

T 7 N R 1 E

TYPE MONUMENT MAG/WASHER

ON SURFACE - ~~BELOW~~ ON

OFFSET 0.3' LT : ~~RT~~

9.7' TO LT EDGE PAVEMENT

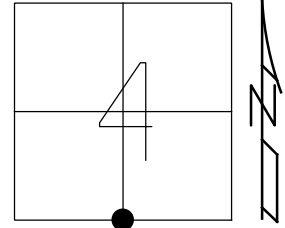
STATION: 26+48

HORZ. DATUM: NAD83(2011)

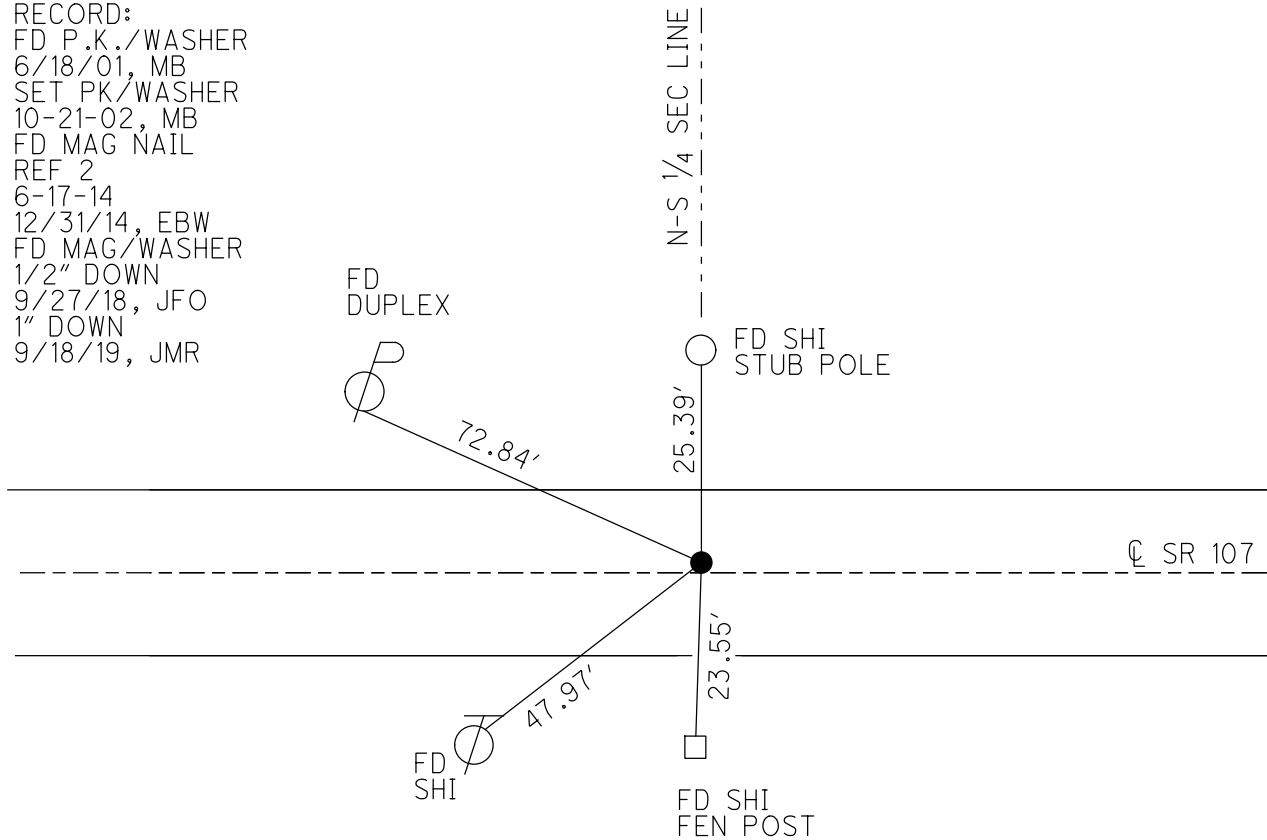
GEOID: 2012A

GRID: NORTHING: 707060.992

EASTING: 1350442.108



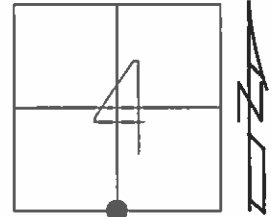
RECORD:
 FD P.K./WASHER
 6/18/01, MB
 SET PK/WASHER
 10-21-02, MB
 FD MAG NAIL
 REF 2
 6-17-14
 12/31/14, EBW
 FD MAG/WASHER
 1/2" DOWN
 9/27/18, JFO
 1" DOWN
 9/18/19, JMR



O.D.O.T. DISTRICT 2 SURVEY OFFICE (USE ONLY)

PERSONNEL _____ REFERENCE NO. 2 SHEET 2 OF 18
 NOTES WESTFALL DATE 6-17-14 ROUTE SR 107
 H.C. WESTFALL WEATHER CLOUDY, WINDY COUNTY WILLIAMS
 R.C. THOMAS TEMP. 85° TOWNSHIP FLORENCE
 _____ SECTION 4
 _____ T 7 N R 1 E

TYPE MONUMENT PK/WASHER
 ON SURFACE - ~~BELOW~~ ON _____
 LEFT - ☉ PAV'T - ~~RIGHT~~ 0.3'
9.7' TO LT EDGE PAVEMENT
 S.L.M. 26+48
 Grid: Northing: 707060.992 Easting: 1350442.108

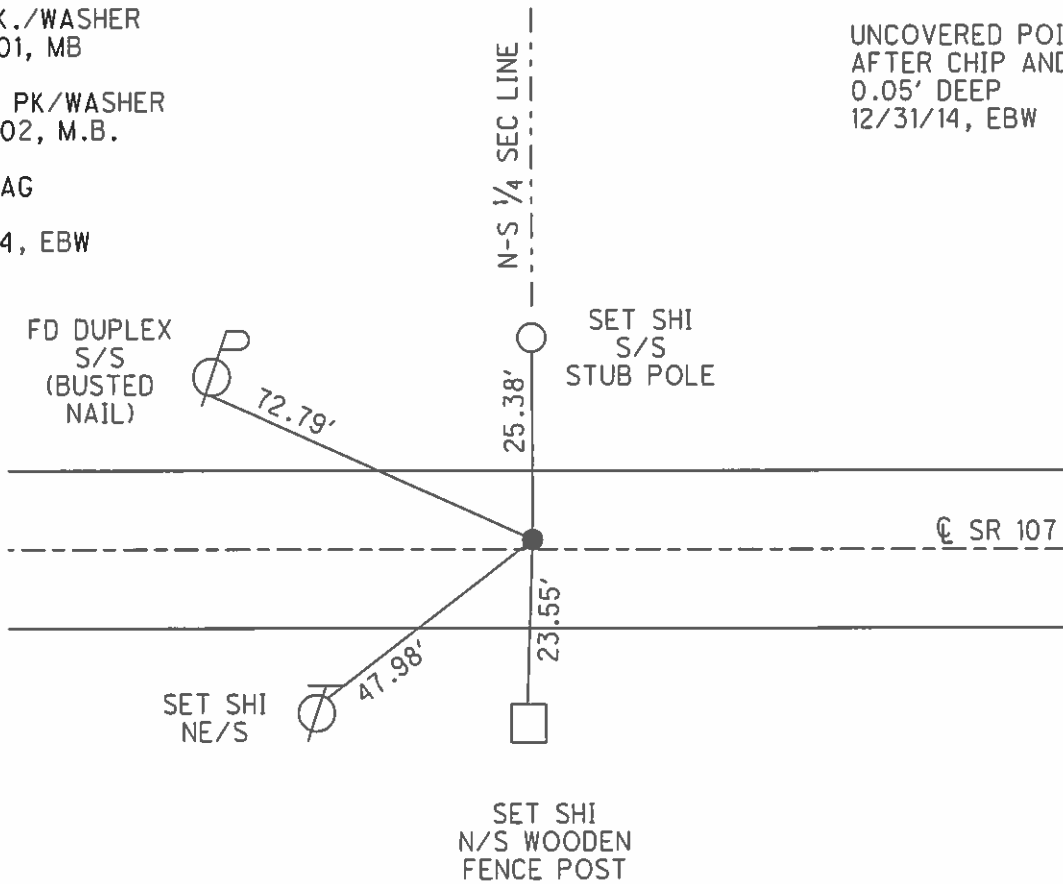


FD P.K./WASHER
 6/18/01, MB

RESET PK/WASHER
 10-21-02, M.B.

FND MAG
 REF 2
 6-17-14, EBW

UNCOVERED POINT
 AFTER CHIP AND SEAL
 0.05' DEEP
 12/31/14, EBW



O.D.O.T. DISTRICT 2 SURVEY OFFICE

PERSONNEL

REFERENCE NO. 2

SHEET 1 OF 16

NOTES BARNHISEL

H.C. MOSE

R.C. CANTERBURY

DATE 6-18-01

WEATHER RAIN

TEMP. +70°

ROUTE S.R. # 107

COUNTY WILLIAMS

TOWNSHIP FLORENCE

SECTION 4

T 7 N R 1 E

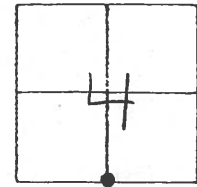
TYPE MONUMENT P.K. / WASHER

ON SURFACE - ~~BELOW~~ SURFACE

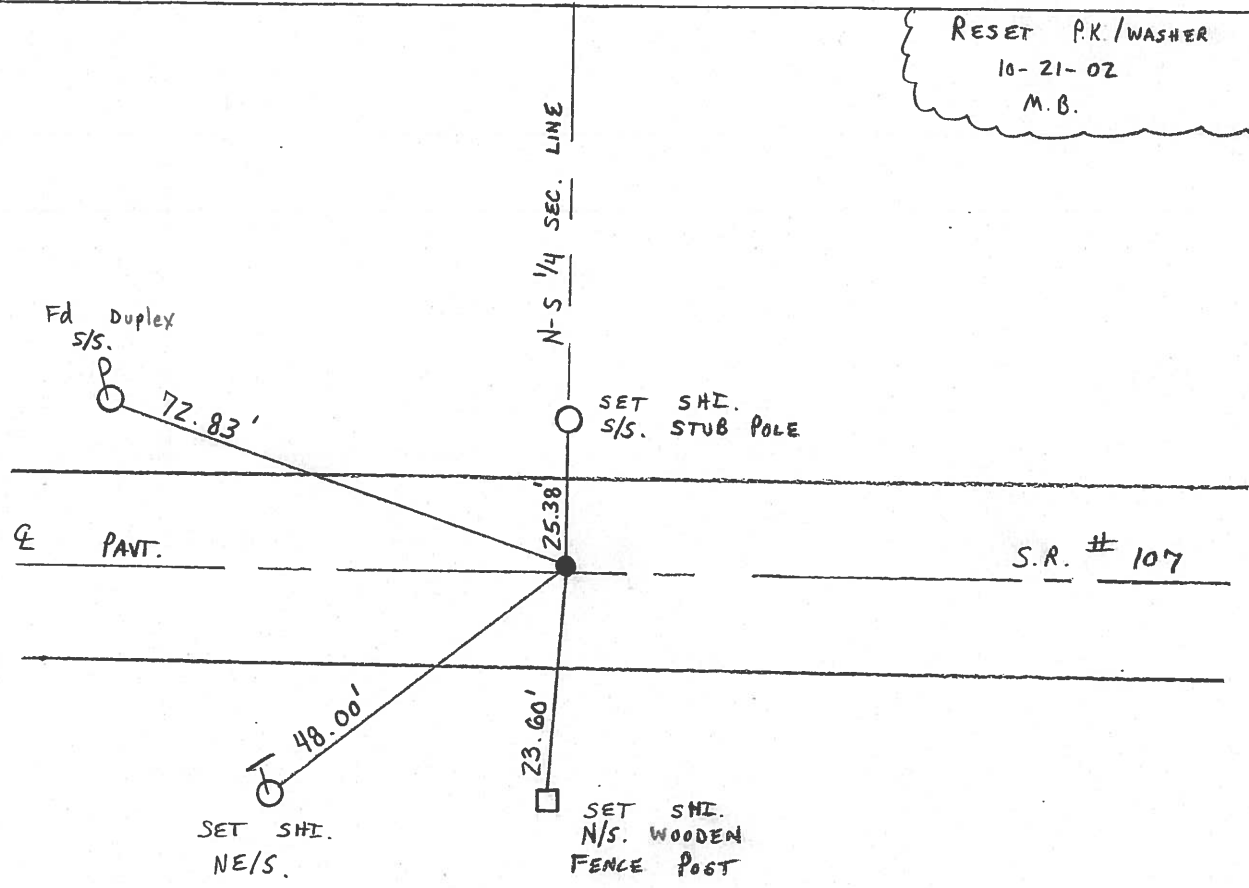
LEFT-♀ PAV'T. - ~~RIGHT~~ 0.3' LT ♀

9.7 TO LT. EDGE PAVEMENT

S.L.M. 26+48



RESET P.K. / WASHER
10-21-02
M.B.



Resurfaced 2002

O.D.O.T. DISTRICT 2 SURVEY OFFICE

PERSONNEL

REFERENCE NO. 2

SHEET 1 OF 18

NOTES LOEHRKE

H.C. CURTIS

R.C. ROMETO

DATE 5-20-92

WEATHER CLEAR

TEMP. +70

ROUTE S.R. 107

COUNTY Williams

TOWNSHIP FLORENCE

SECTION 4

T. 7 N. R. 1 E

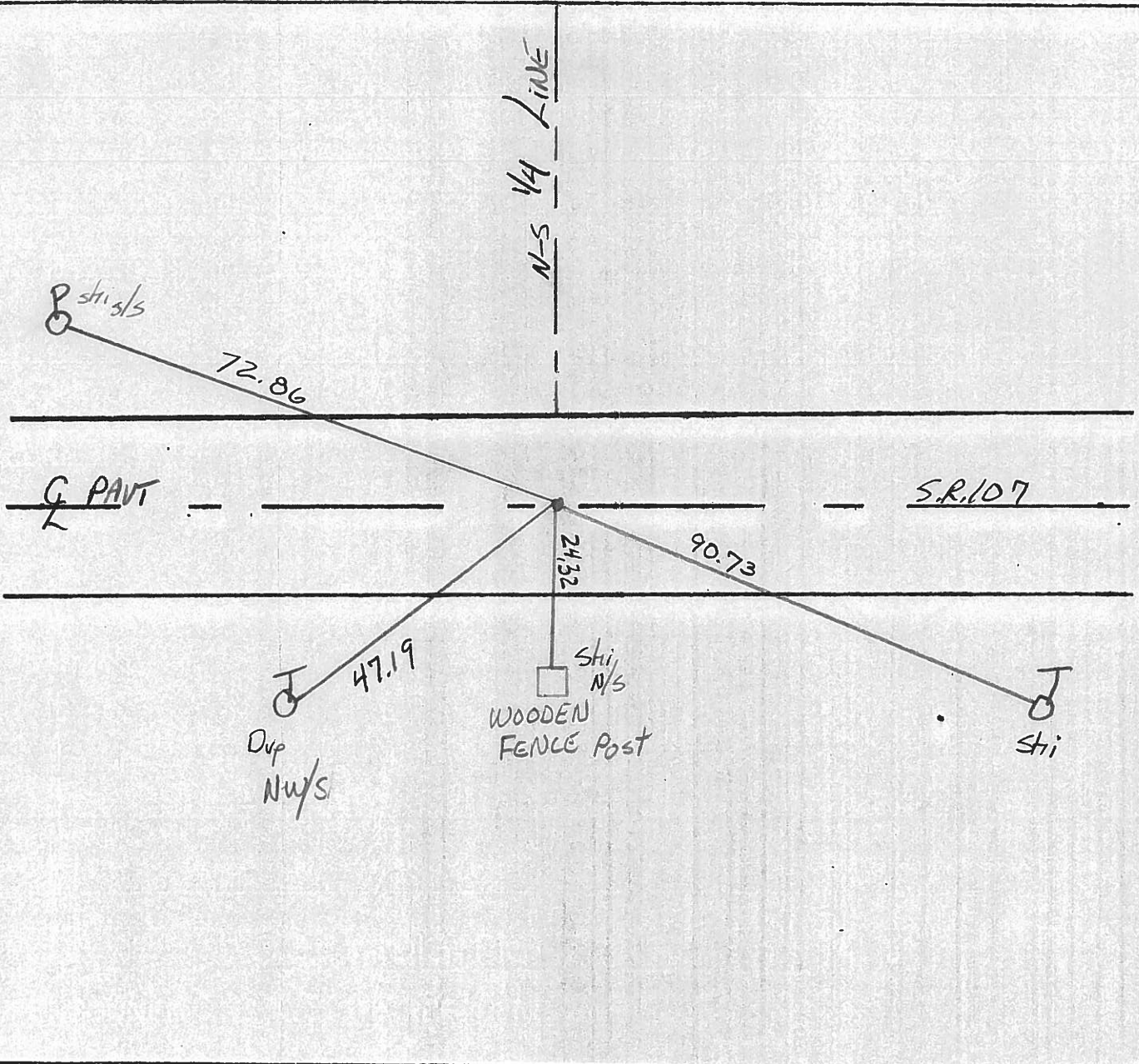
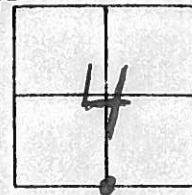
TYPE MONUMENT 5m R.R. Spike SET PK/WASHER 7/16/92 APC

ON SURFACE - BELOW Yes

LEFT - 0 PAV'T. - RIGHT 0.6'

2.7 TO Lt EDGE PAVEMENT

S.L.M. 26451



O.D.O.T. DISTRICT 2 SURVEY OFFICE

PERSONNEL

REFERENCE NO. 2

SHEET 2 OF

NOTES LOEHRKE

H.C. BARNHISEL

R.C. Hoffman

DATE 3-29-85

WEATHER CLOUDY

TEMP. +53

ROUTE SR 107

COUNTY WILLIAMS

TOWNSHIP FLORENCE

SECTION 4

T 7 N R 1 E

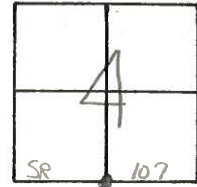
TYPE MONUMENT 1" PIPE

ON SURFACE - BELOW 2 1/2"

LEFT PAV'T RIGHT SR 107

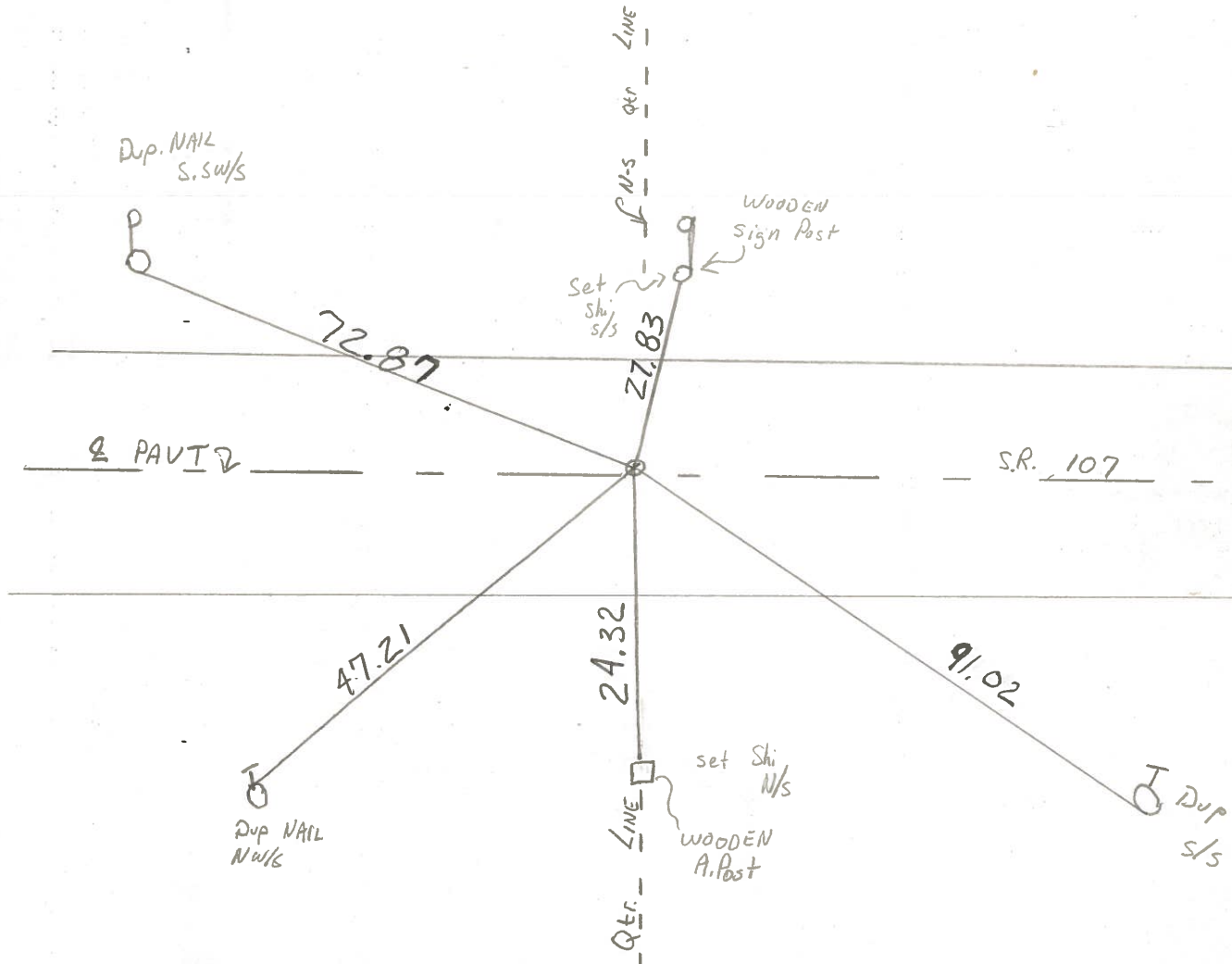
9.3 TO LF EDGE PAVEMENT

S.L.M. 26+52



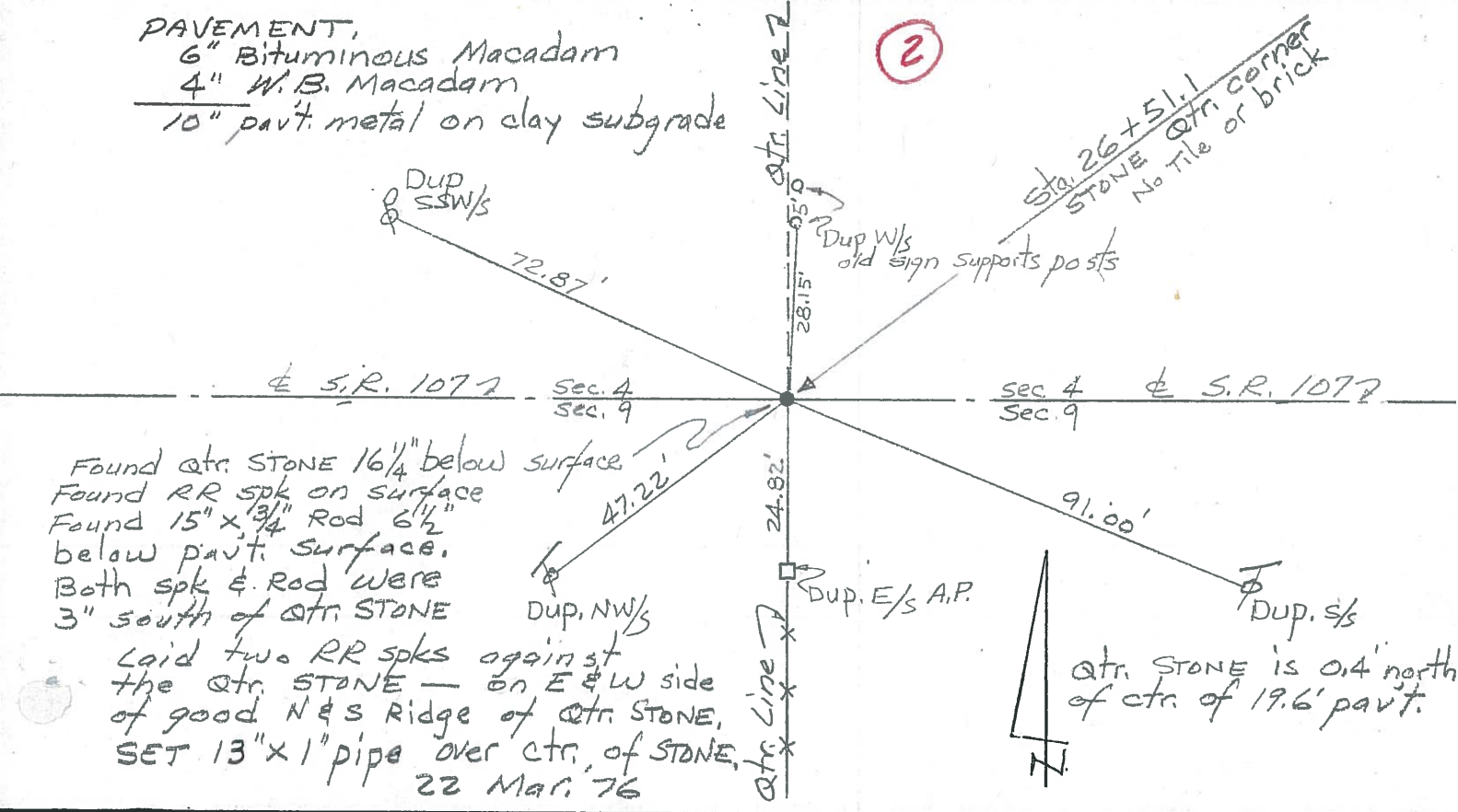
#2

Set Sm. RR Spk.
5-22-85 C.L



PERSONNEL	TITLE	PERSONNEL	TITLE	COUNTY	DATE	WEATHER
Red Beach				Williams	22 March 76	
W. Knappe				S. R. 107		
				SEC. Florence Twp.		
DESCRIPTION CONTROL POINTS				JOB NO.		

PAVEMENT,
 6" Bituminous Macadam
 4" W.B. Macadam
 10" pavt. metal on clay subgrade



GEARHARTS CORNER — SHADY REST

