

O.D.O.T. DISTRICT 2 SURVEY OFFICE (USE ONLY)

PERSONNEL

REFERENCE NO. 3

SHEET 3 OF 16

NOTES RHOADES

DATE 9/27/18

ROUTE SR 107

H.C. O'DONNELL

WEATHER CLOUDY

COUNTY WILLIAMS

R.C. RHOADES

TEMP. 51°

TOWNSHIP FLORENCE

SECTION 4

DWG BY NIESE PID 105474

T 7 N R 1 E

TYPE MONUMENT P.K./WASHER

ON SURFACE - ~~BELOW~~ ON

OFFSET ☉ PAVEMENT ON LT : RT

- TO - EDGE PAVEMENT

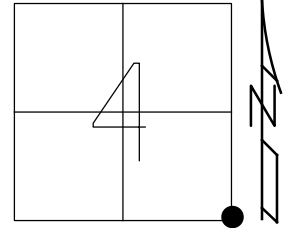
STATION: 53+03

HORZ.DATUM: -

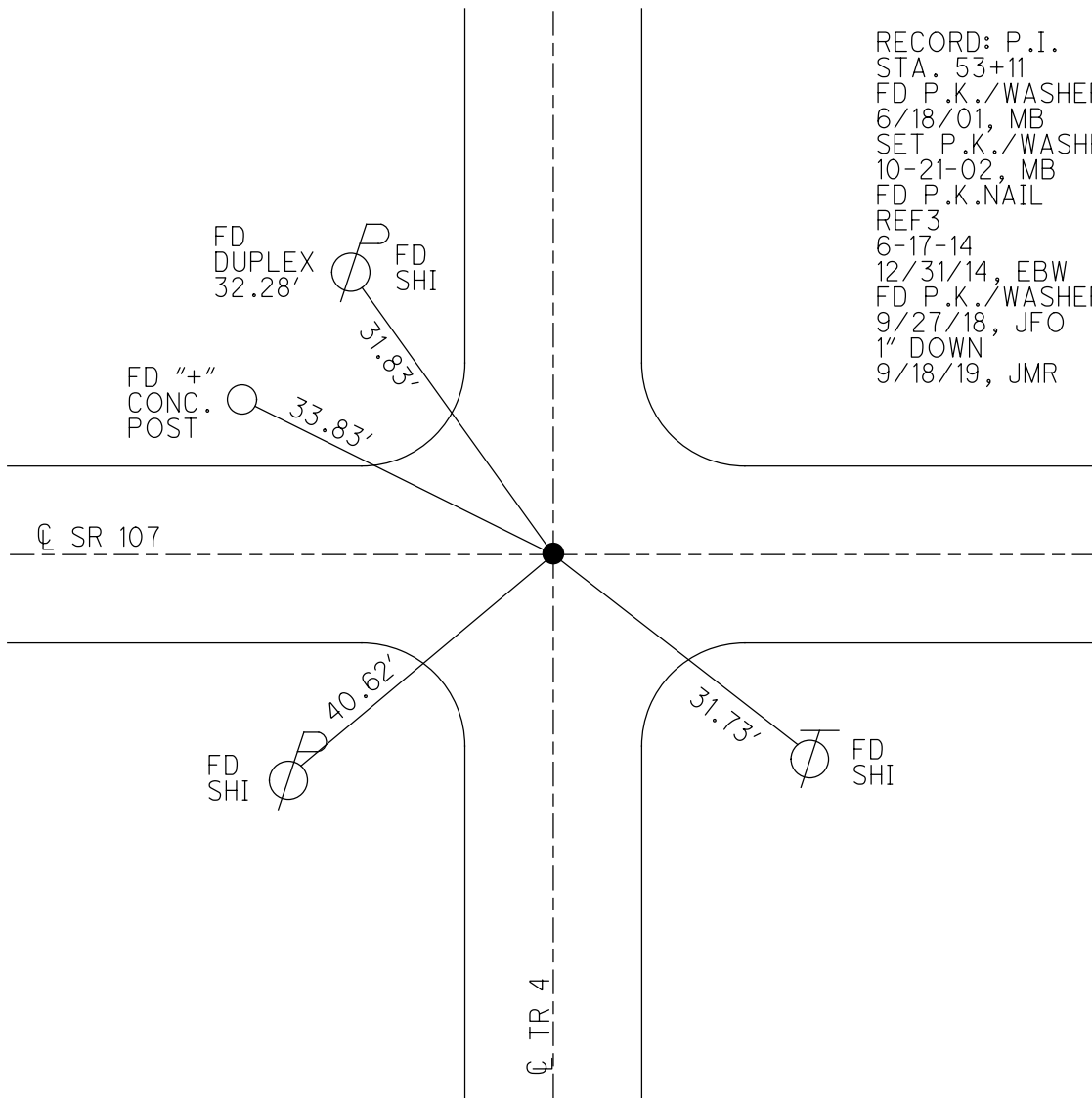
GEOID: -

GRID: NORTHING: 706999.881

EASTING: 1353101.147



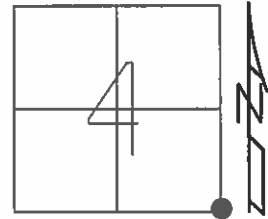
RECORD: P.I.
 STA. 53+11
 FD P.K./WASHER
 6/18/01, MB
 SET P.K./WASHER
 10-21-02, MB
 FD P.K.NAIL
 REF3
 6-17-14
 12/31/14, EBW
 FD P.K./WASHER
 9/27/18, JFO
 1" DOWN
 9/18/19, JMR



O.D.O.T. DISTRICT 2 SURVEY OFFICE (USE ONLY)

PERSONNEL _____ REFERENCE NO. 3 SHEET 3 OF 18
 NOTES WESTFALL DATE 6-17-14 ROUTE SR 107
 H.C. WESTFALL WEATHER CLOUDY, WINDY COUNTY WILLIAMS
 R.C. THOMAS TEMP. 85° TOWNSHIP FLORENCE
 _____ SECTION 4
 _____ T 7 N R 1 E

TYPE MONUMENT PK/WASHER
 ON SURFACE - ~~BELOW~~ ON _____
~~LEFT~~ - Q PAV'T - ~~RIGHT~~ ON _____
 _____ TO _____ EDGE PAVEMENT
 S.L.M. 53+05
 Grid: Northing: 706999.881 Easting: 1353101.147

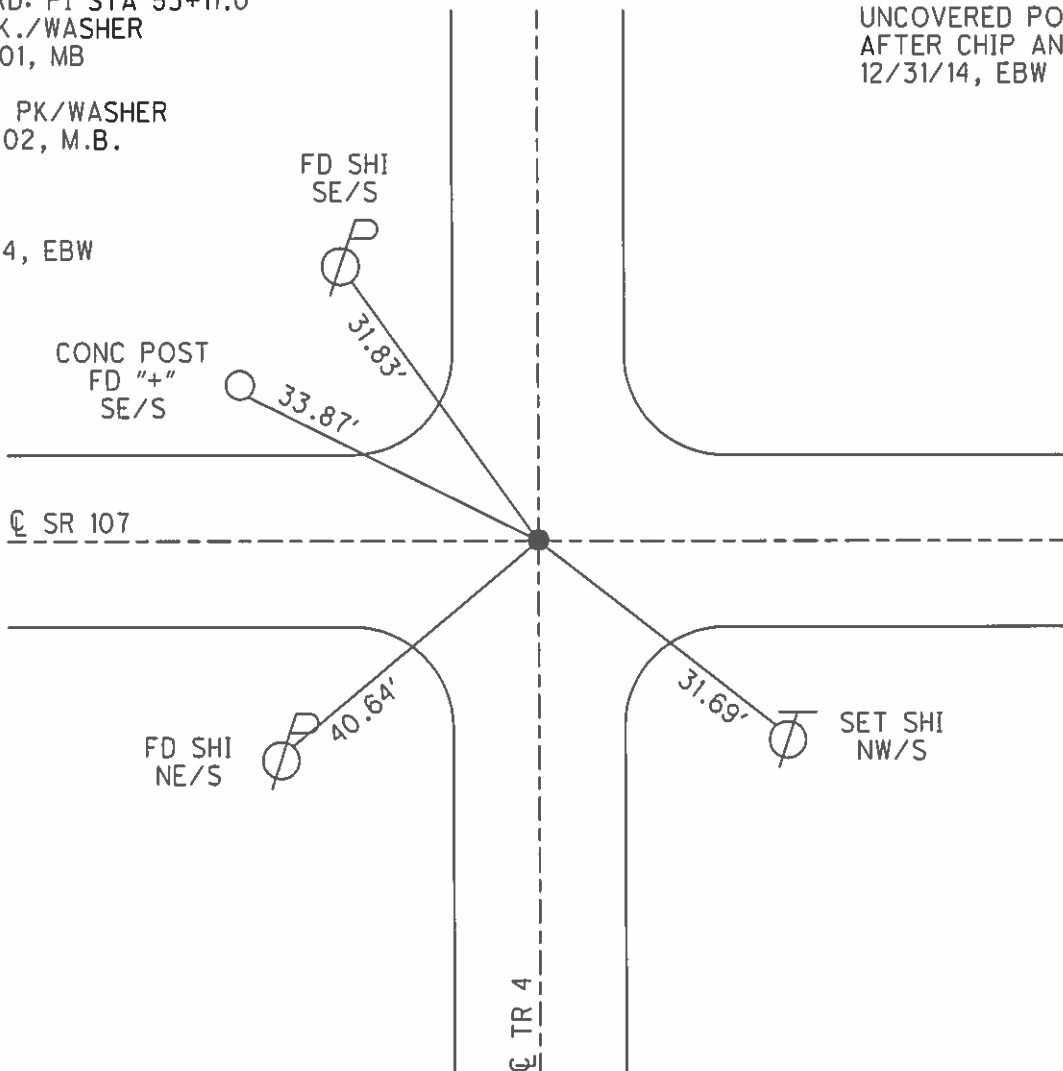


RECORD: PI STA 53+11.0
 FD P.K./WASHER
 6/18/01, MB

RESET PK/WASHER
 10-21-02, M.B.

FD PK
 REF 3
 6-17-14, EBW

UNCOVERED POINT
 AFTER CHIP AND SEAL
 12/31/14, EBW



O.D.O.T. DISTRICT 2 SURVEY OFFICE

PERSONNEL

REFERENCE NO. 3

SHEET 2 OF 16

NOTES BARNHISEL

H.C. MOSEER

R.C. CANTERBURY

DATE 6-18-01

WEATHER CLOUDY

TEMP. +70°

ROUTE S.R. # 107

COUNTY WILLIAMS

TOWNSHIP FLORENCE

SECTION 4

T 7 N R 1 E

TYPE MONUMENT P.K. / WASHER

ON SURFACE - ~~BELOW~~ SURFACE

LEFT - ☉ PAV'T. - RIGHT ON ☉

☉ TO EDGE PAVEMENT

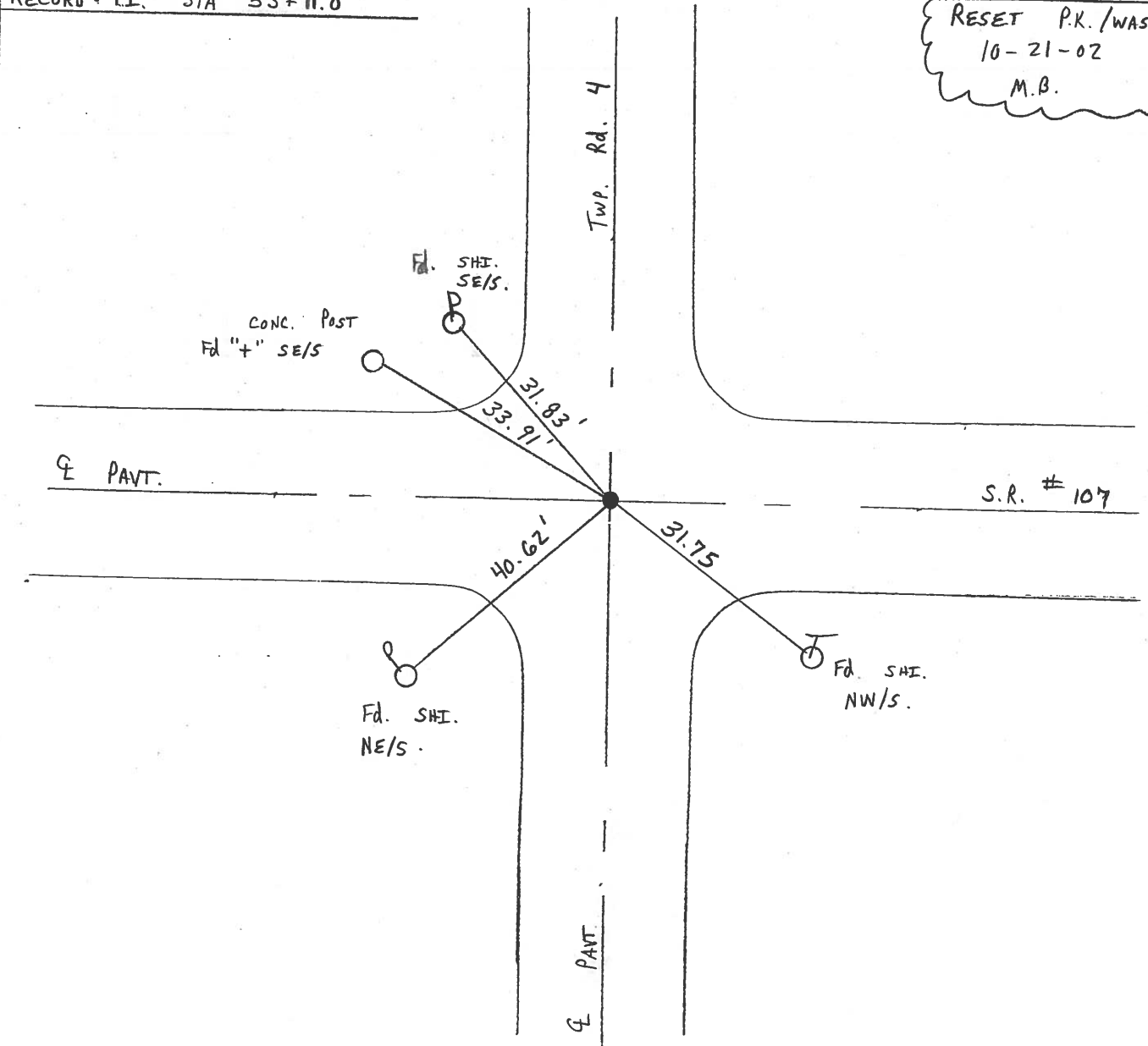
S.L.M. 53+05

4	3
10	11



RECORD: P.I. STA 53+11.0

RESET P.K. / WASHER
 10-21-02
 M.B.



O.D.O.T. DISTRICT 2 SURVEY OFFICE

PERSONNEL _____

REFERENCE NO. 3

SHEET 2 OF 18

NOTES LOEHRKE

H.C. CURTIS

DATE 5-20-92

ROUTE S.R. 107

R.C. ROMERO

WEATHER CLEAR

COUNTY Williams

TEMP. +75

TOWNSHIP FLORENCE

SECTION 4

T 7 N R 1 E

TYPE MONUMENT Sm. R.R. Spike. SET PK/WASHER 7/16/92 J/C

ON SURFACE - BELOW Yes

LEFT - PAV'T. - RIGHT Yes

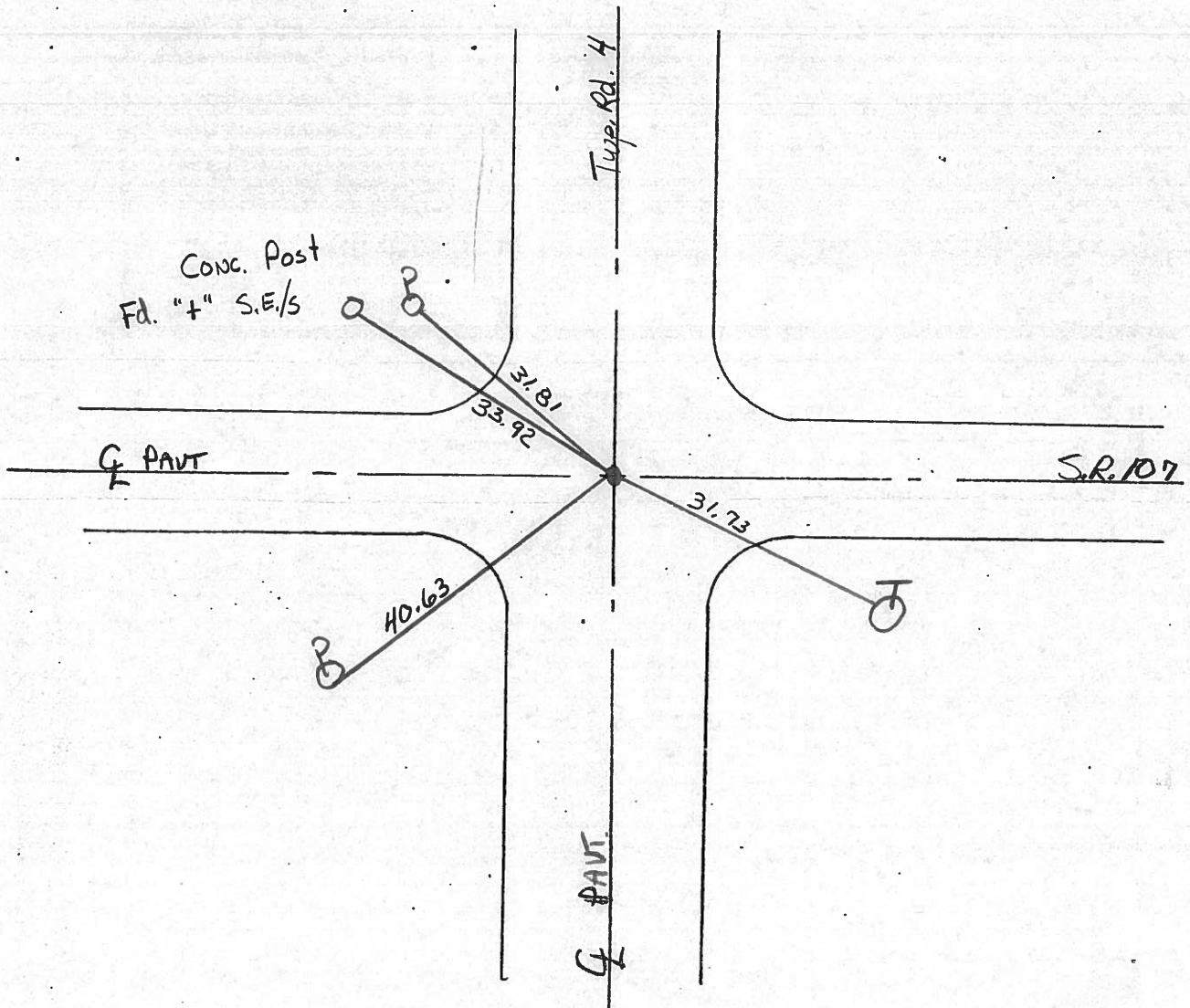
11.5 START EDGE PAVEMENT

S.L.M. 53+11

.4	3
10	11



RECORD P.I.
Sta 53+11.0



O.D.O.T. DISTRICT 2 SURVEY OFFICE

PERSONNEL

REFERENCE NO. 3

SHEET 3 OF

NOTES LOEHRKE

H.C. BARNY

R.C. Hoffman

DATE 3-29-85

WEATHER pt cloudy

TEMP. 55

ROUTE SR 107

COUNTY WILLIAMS

TOWNSHIP FLORENCE

SECTION 3

T 2 N R 1 E

TYPE MONUMENT 1" PIPE

ON SURFACE - BELOW 2"

LEFT- & PAV'T. - RIGHT 0.3' RT CL. SR107

TO EDGE PAVEMENT ON & C.R. #4

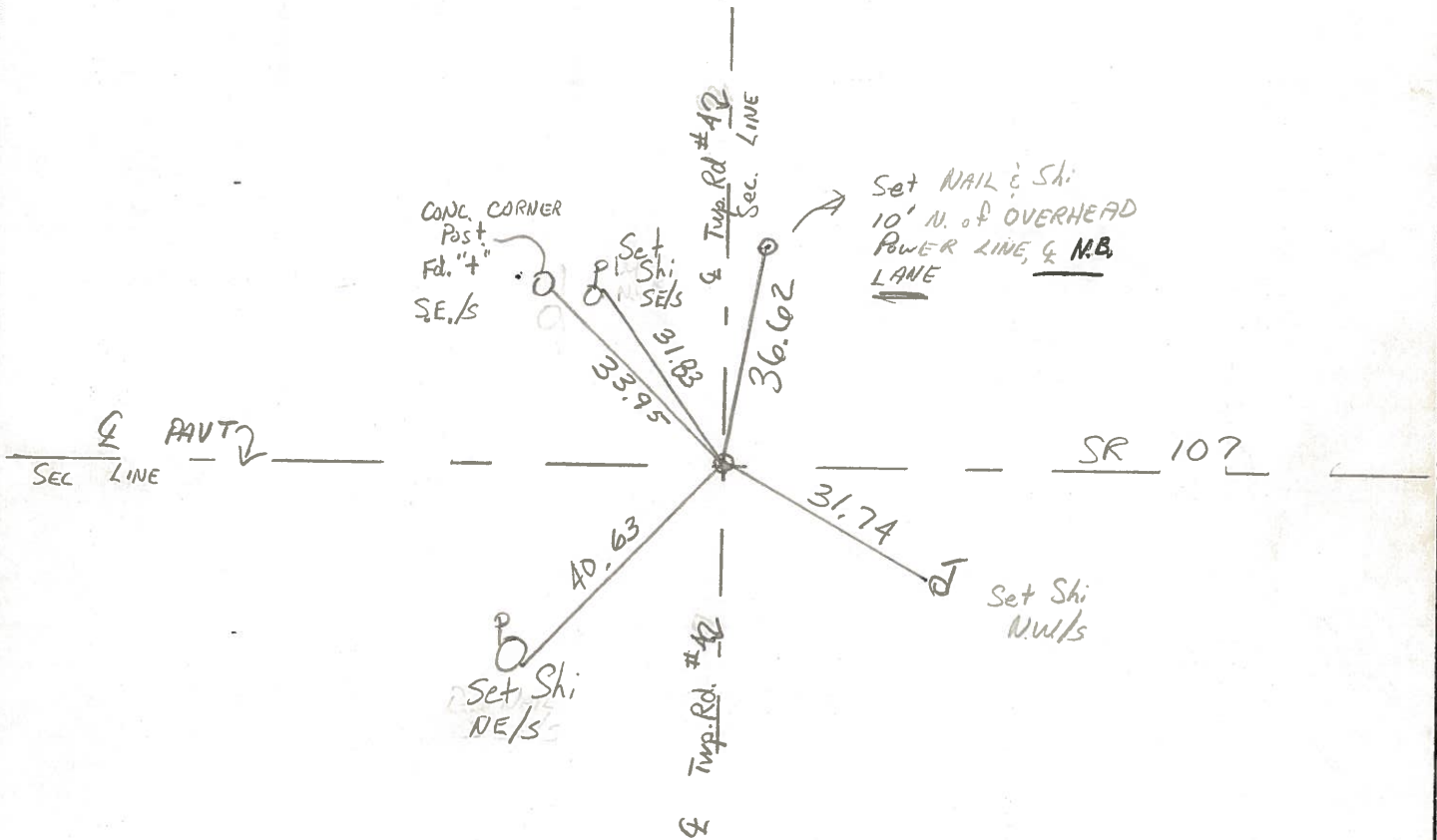
S.L.M. 53+12

4	3
10	11



P.I. STA 53+11.0

Set Sm. RR. Spk
5-22-85 C.L.



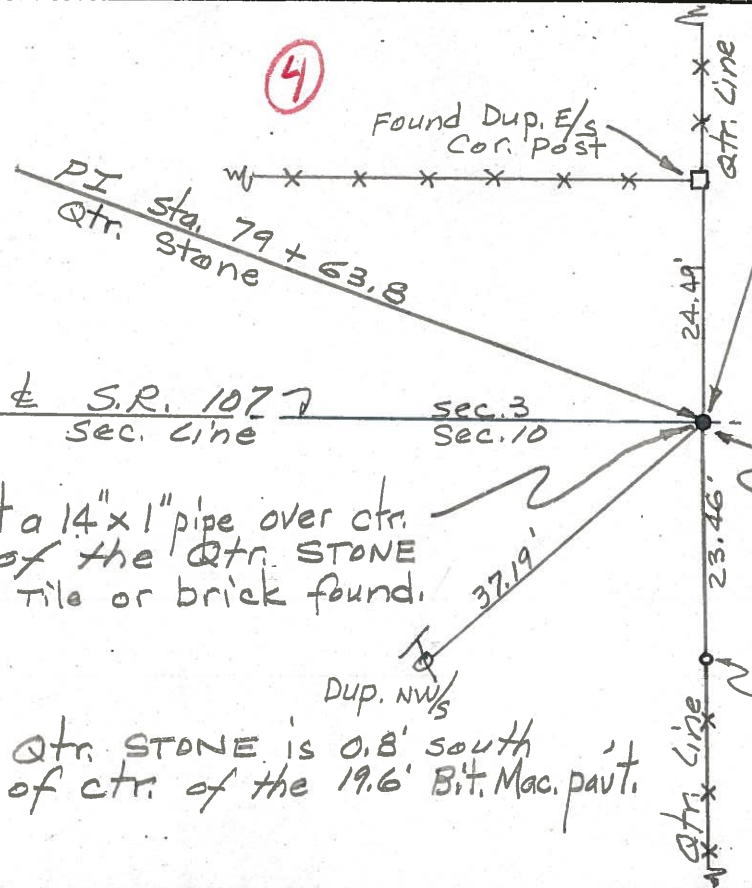
PERSONNEL	TITLE	PERSONNEL	TITLE
Red Beach			
W. Knappe			

COUNTY Williams DATE 23 Mar 76

S. R. 107 WEATHER _____

SEC. Florence Twp. TEMP _____

DESCRIPTION CONTROL POINTS JOB NO. _____



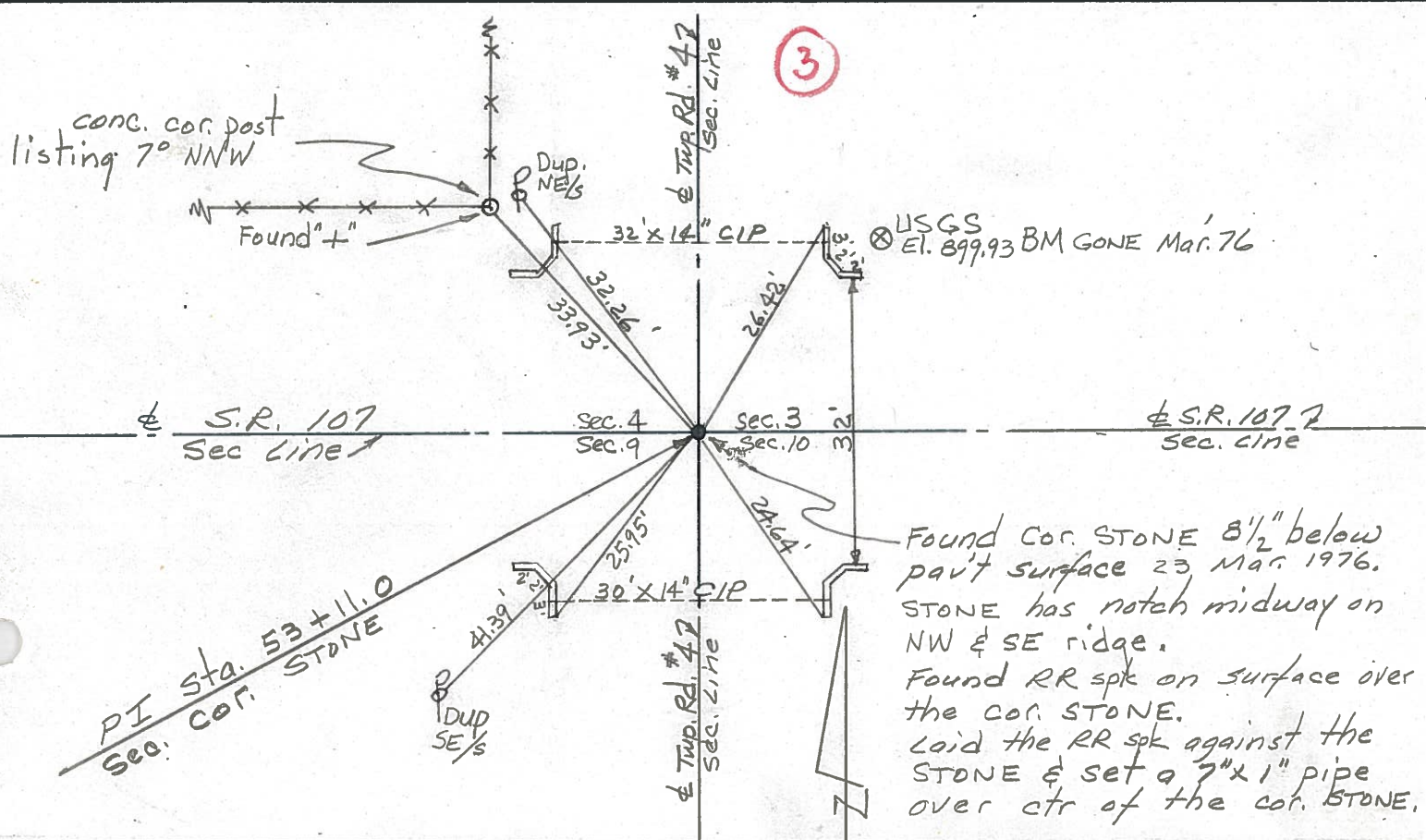
Found Qtr. Stone 17" below pav't surface,
 Found RR spk on surface,
 Found 13" x 3/4" Rod 4" below surface,
 Found 12" x 1/2" Bolt 4" below surface but 0.3' north & 0.6' west of Qtr. stone,
 Laid the bolt and the rod on the E & W side of the Qtr. Stone,

Set a 14" x 1" pipe over ctr. of the Qtr. Stone
 No tile or brick found.

The top of the Qtr. Stone is crescent shaped with a notch approx midway on the crescent ridge.

Qtr. Stone is 0.8' south of ctr. of the 19.6' Bit. Mac. pav't.

(3)



Found Cor. Stone 8 1/2" below pav't surface 23 Mar 1976.
 Stone has notch midway on NW & SE ridge.
 Found RR spk on surface over the cor. stone.
 Laid the RR spk against the stone & set a 7" x 1" pipe over ctr. of the cor. Stone.

conc. cor. post listing 7° NNW

USGS El. 899.93 BM GONE Mar. 76