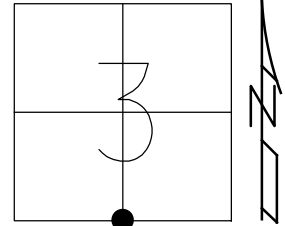


O.D.O.T. DISTRICT 2 SURVEY OFFICE (USE ONLY)

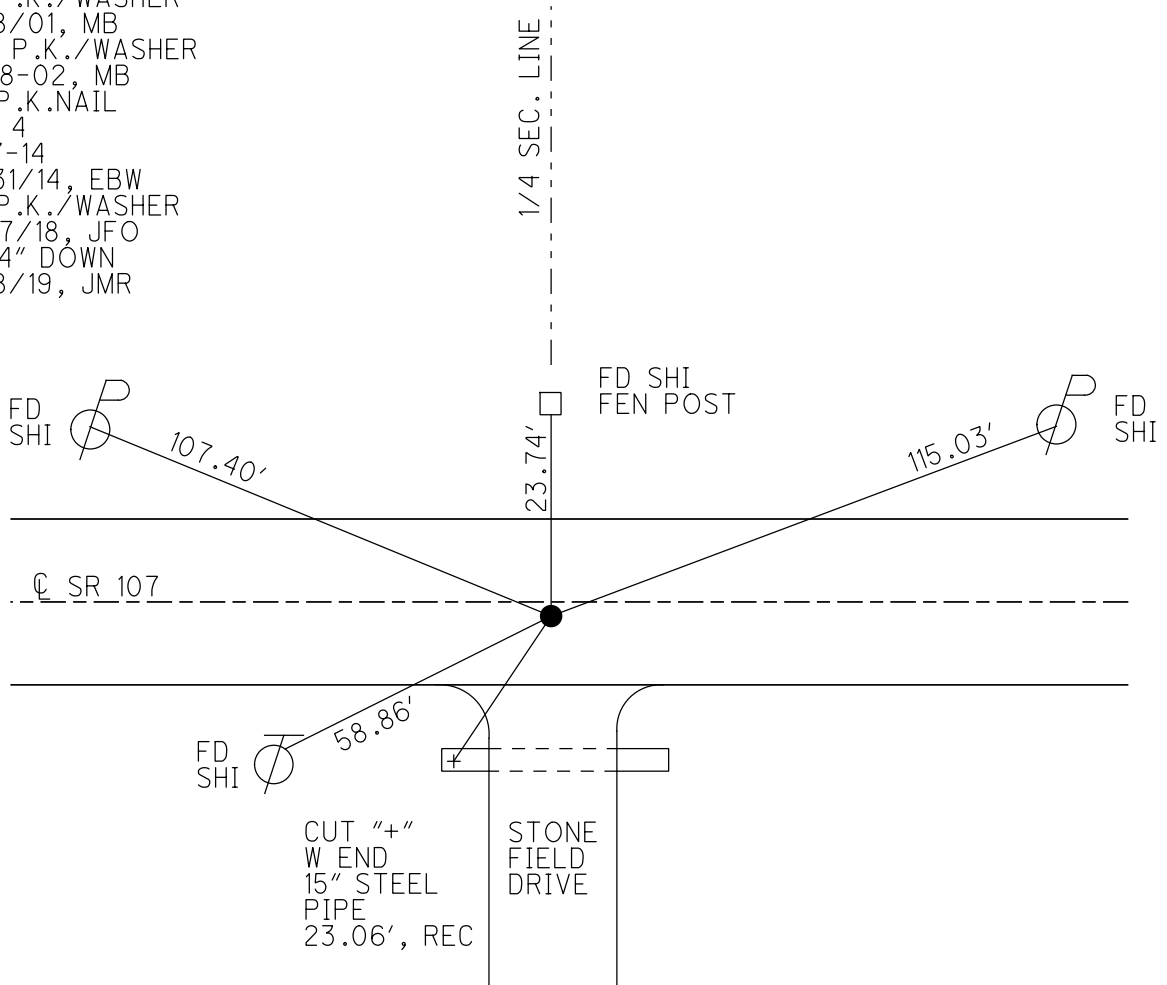
PERSONNEL _____ REFERENCE NO. 4 SHEET 4 OF 16
 NOTES RHOADES DATE 9/27/18 ROUTE SR 107
 H.C. O'DONNELL WEATHER CLOUDY COUNTY WILLIAMS
 R.C. RHOADES TEMP. 52° TOWNSHIP FLORENCE
 DWG BY NIESE PID 105474 SECTION 3
 T 7 N R 1 E

TYPE MONUMENT P.K./WASHER
 ON SURFACE - ~~BELOW~~ ON
 OFFSET 0.8' ~~RT~~ : RT
9.2' TO RT EDGE PAVEMENT
 STATION: 79+50

HORZ. DATUM: - GEOID: -
 GRID: NORTHING: 706949.782 EASTING: 1355753.122



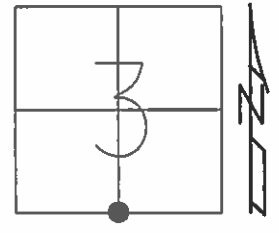
RECORD: P.I.
 STA. 79+63.8
 FD P.K./WASHER
 6/18/01, MB
 SET P.K./WASHER
 10-18-02, MB
 FD P.K.NAIL
 REF 4
 6-17-14
 12/31/14, EBW
 FD P.K./WASHER
 9/27/18, JFO
 1 1/4" DOWN
 9/18/19, JMR



O.D.O.T. DISTRICT 2 SURVEY OFFICE (USE ONLY)

PERSONNEL _____ REFERENCE NO. 4 SHEET 4 OF 18
 NOTES WESTFALL DATE 6-17-14 ROUTE SR 107
 H.C. WESTFALL WEATHER CLOUDY, WINDY COUNTY WILLIAMS
 R.C. THOMAS TEMP. 85° TOWNSHIP FLORENCE
 _____ SECTION 3
 _____ T 7 N R 1 E

TYPE MONUMENT PK/WASHER
 ON SURFACE - ~~BELOW~~ ON _____
~~LEFT~~ - C PAV'T - RIGHT 0.8'
9.2' TO RT EDGE PAVEMENT
 S.L.M. 79+50



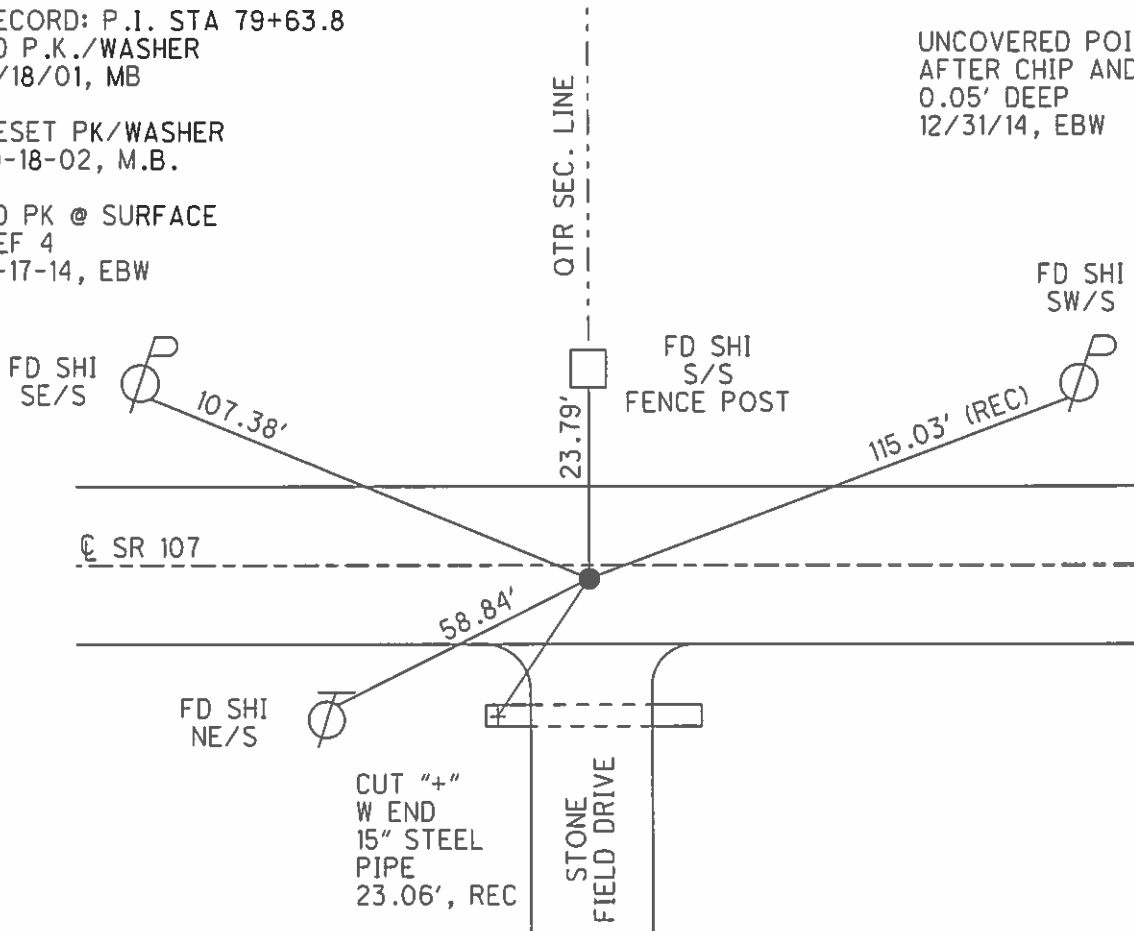
Grid: Northing: 706949.782 Easting: 1355753.122

RECORD: P.I. STA 79+63.8
 FD P.K./WASHER
 6/18/01, MB

RESET PK/WASHER
 10-18-02, M.B.

FD PK @ SURFACE
 REF 4
 6-17-14, EBW

UNCOVERED POINT
 AFTER CHIP AND SEAL
 0.05' DEEP
 12/31/14, EBW



O.D.O.T. DISTRICT 2 SURVEY OFFICE

PERSONNEL

REFERENCE NO. 4

SHEET 3 OF 16

NOTES BARNISEL

H.C. MOSEK

R.C. CANTERBURY

DATE 6-18-01

WEATHER CLOUDY

TEMP. +70°

ROUTE S.R. #107

COUNTY WILLIAMS

TOWNSHIP FLORENCE

SECTION 3

T 7 N R 1 E

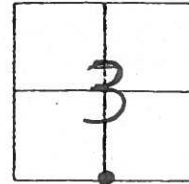
TYPE MONUMENT P.I. / WASHER

ON SURFACE - ~~BELOW~~ SURFACE

~~LEFT- & PAVT.~~ - RIGHT 0.8' RT

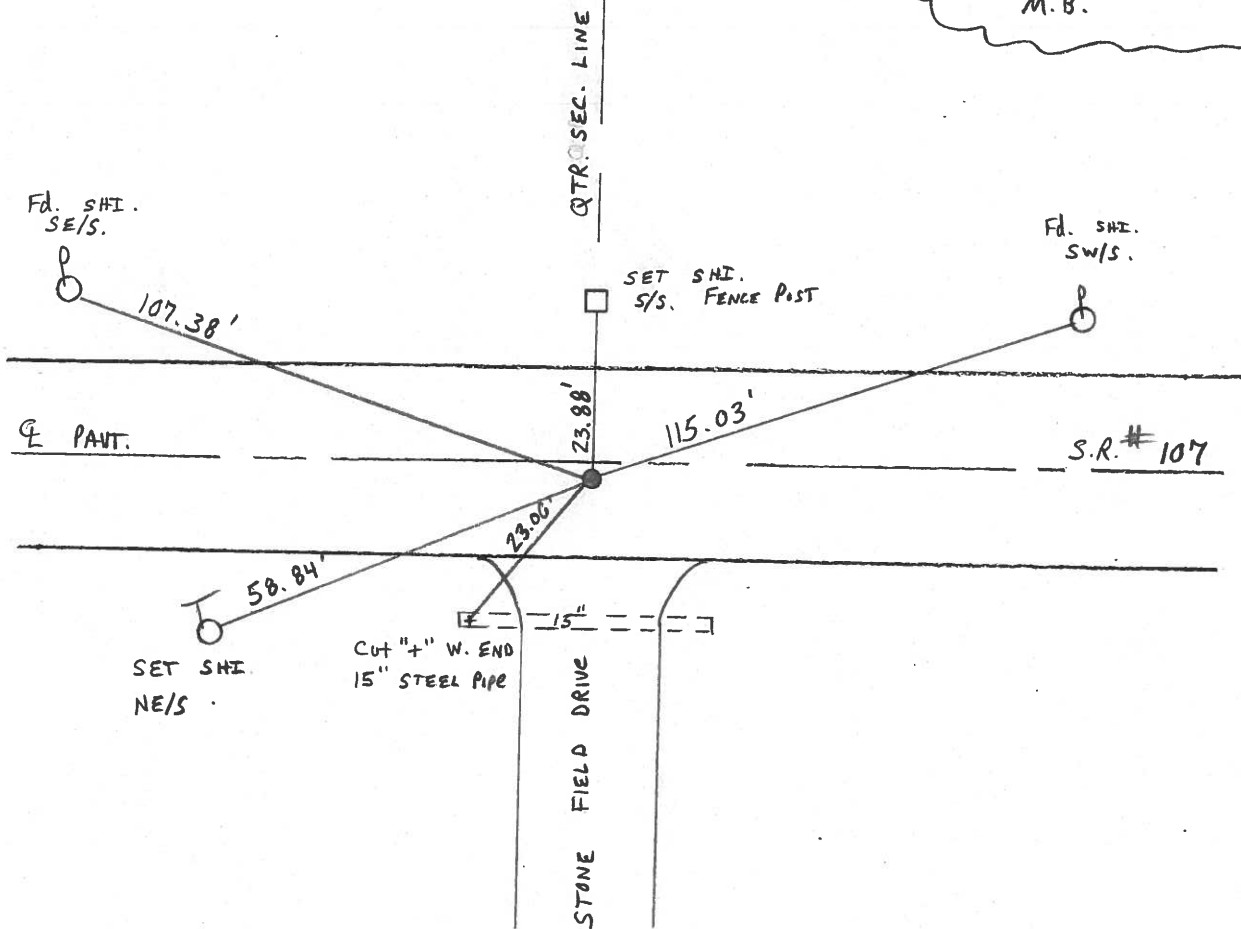
9.2' TO RT EDGE PAVEMENT

S.L.M. 79+50



RECORD: P.I. STA 79+63.8

RESET P.I. / WASHER
18-18-02
M.B.



O.D.O.T. DISTRICT 2 SURVEY OFFICE

PERSONNEL

REFERENCE NO. 4

SHEET 3 OF 18

NOTES LOEHRKE

H.C. CURTIS

R.C. ROMETO

DATE 5-20-92

WEATHER CLEAR

TEMP. +75

ROUTE S.R. 107

COUNTY Williams

TOWNSHIP FLORENCE

SECTION 3

T 7 N R 1 E

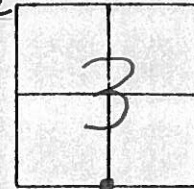
TYPE MONUMENT Sm. R.P. SPIKE SET PK/WASHER 7/16/92 DC

ON SURFACE - BELOW Yes

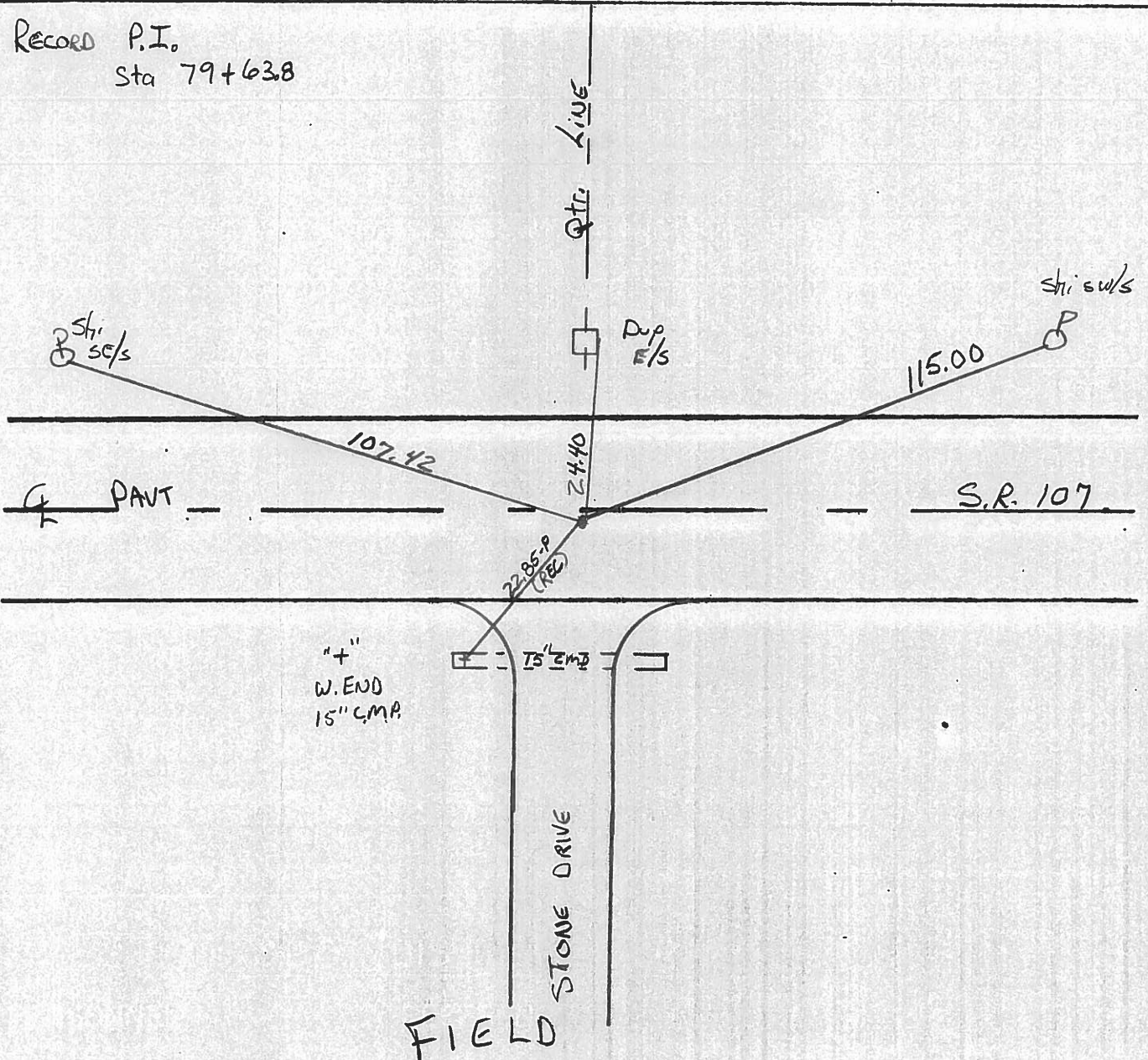
~~LEFT~~ - ~~PAV'T.~~ - RIGHT 0.8'

10.4 TO Lt EDGE PAVEMENT

S.L.M. 79+65



Record P.I.
Sta 79+63.8



O.D.O.T. DISTRICT 2 SURVEY OFFICE

PERSONNEL

REFERENCE NO. 4

SHEET 4 OF

NOTES LOEHRKE

H.C. BARNHISEL

R.C. Hoffman

DATE 3-29-85

WEATHER Pt CLOUDY

TEMP. +55

ROUTE SR 107

COUNTY WILLIAMS

TOWNSHIP FLORENCE

SECTION 3

T 7 N R 1 E

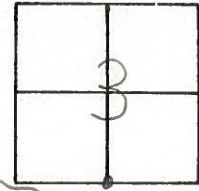
TYPE MONUMENT 1" PIPE

~~ON SURFACE~~ - BELOW 2"

~~LEFT - C PAV'T.~~ - RIGHT 0.8' Rt.

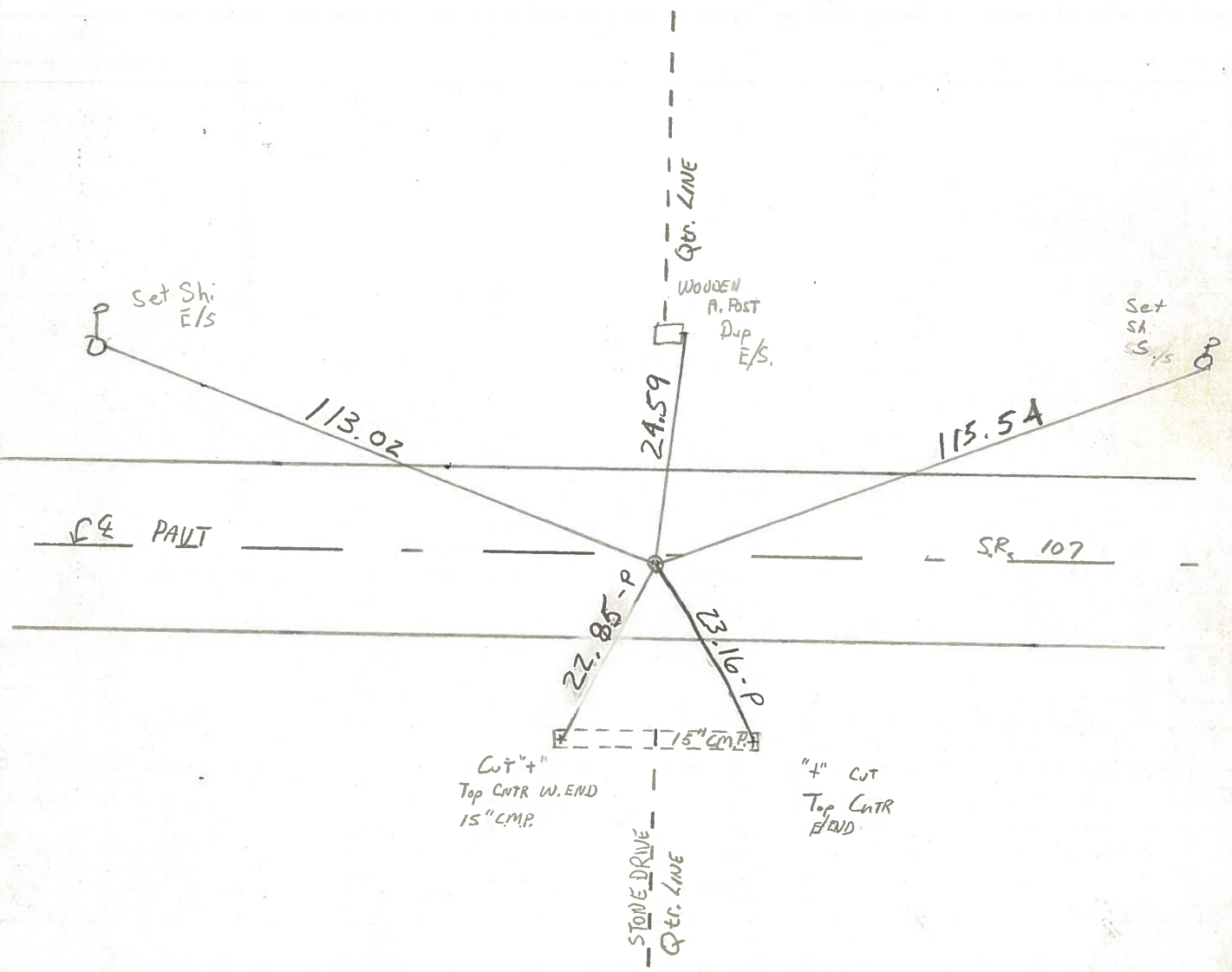
9.4 TO Rt EDGE PAVEMENT

S.L.M. 79+66



PI. sta 79+63.8

Set Sm. R.R. Spk.
5-22-85 C.L.



PERSONNEL	TITLE	PERSONNEL	TITLE	COUNTY	DATE	WEATHER	TEMP
Red Beach				Williams	23 Mar 76		
W. Knappe				S. R. 107			
				SEC. Florence Twp.			
DESCRIPTION	CONTROL POINTS			JOB NO.			

