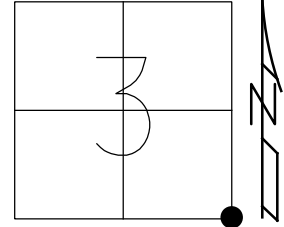


O.D.O.T. DISTRICT 2 SURVEY OFFICE (USE ONLY)

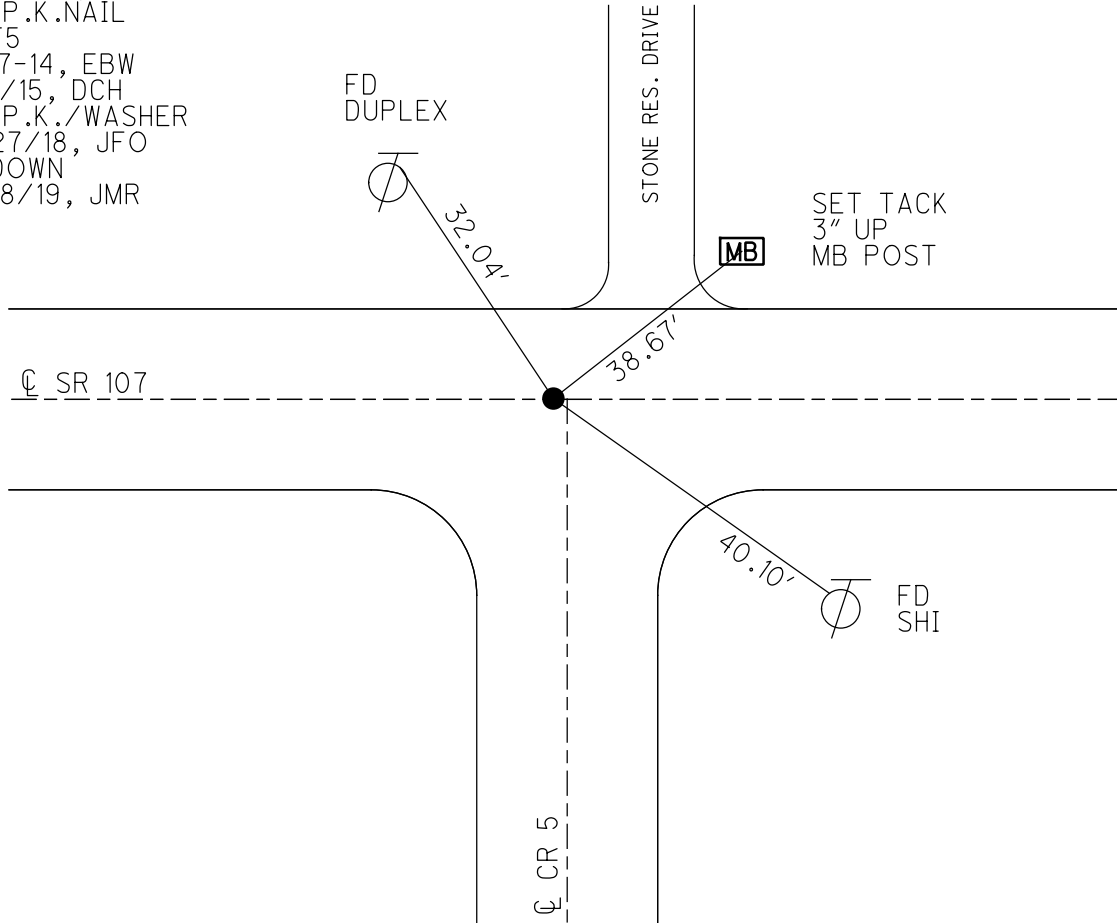
PERSONNEL _____ REFERENCE NO. 5 SHEET 5 OF 16
 NOTES RHOADES DATE 9/27/18 ROUTE SR 107
 H.C. O'DONNELL WEATHER CLOUDY COUNTY WILLIAMS
 R.C. RHOADES TEMP. 52° TOWNSHIP FLORENCE
 DWG BY NIESE PID 105474 SECTION 3
 T 7 N R 1 E

TYPE MONUMENT P.K./WASHER
 ON SURFACE - ~~BELOW~~ ON
 OFFSET Q PAVEMENT ON LT : RT
10.0' TO LT EDGE PAVEMENT 1' W Q CR5
 STATION: 106+10



HORIZ.DATUM: - GEOID: -
 GRID: NORTHING: 706894.947 EASTING: 1358406.088

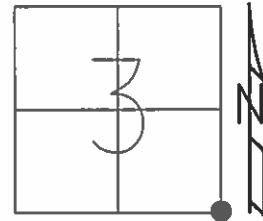
RECORD: P.I.
 STA 106+17.45
 FD P.K./WASHER
 6/18/01, MB
 SET P.K./WASHER
 10-21-02, MB
 FD P.K.NAIL
 REF5
 6-17-14, EBW
 1/8/15, DCH
 FD P.K./WASHER
 9/27/18, JFO
 1" DOWN
 9/18/19, JMR



O.D.O.T. DISTRICT 2 SURVEY OFFICE (USE ONLY)

PERSONNEL _____ REFERENCE NO. 5 SHEET 5 OF 18
 NOTES WESTFALL DATE 6-17-14 ROUTE SR 107
 H.C. WESTFALL WEATHER CLOUDY, WINDY COUNTY WILLIAMS
 R.C. THOMAS TEMP. 85° TOWNSHIP FLORENCE
 _____ SECTION 3
 _____ T 7 N R 1 E

TYPE MONUMENT PK/WASHER
 ON SURFACE - ~~BELOW~~ ON
~~LEFT~~ - Q PAV'T - ~~RIGHT~~ ON, 1' W Q CR 5
10.0' TO LT EDGE PAVEMENT
 S.L.M. 106+10



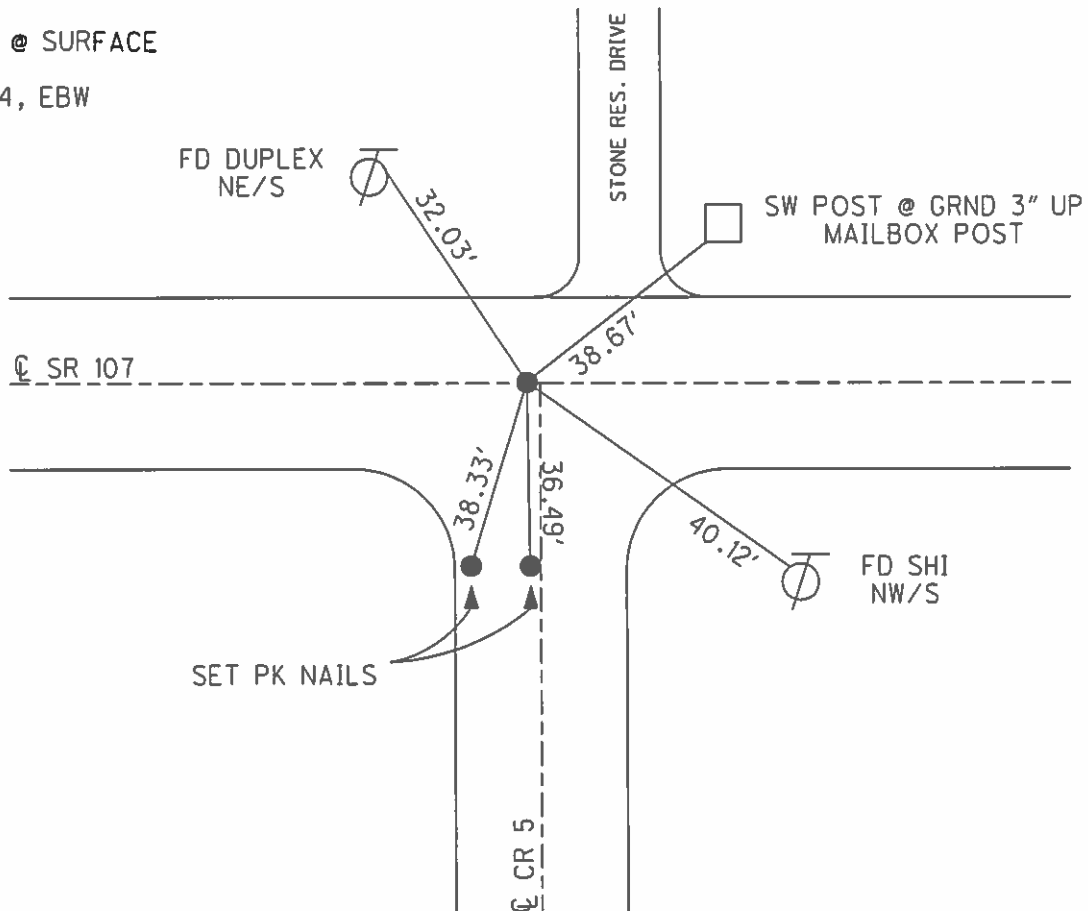
Grid: Northing: 706894.947 Easting: 1358406.088

RECORD: PI STA 106+17.45
 FD P.K./WASHER
 6/18/01, MB

UNCOVERED POINT
 AFTER CHIP AND SEAL
 1/8/15, DCH

RESET PK/WASHER
 10-21-02, M.B.

PK FD @ SURFACE
 REF5
 6-17-14, EBW



O.D.O.T. DISTRICT 2 SURVEY OFFICE

PERSONNEL _____

REFERENCE NO. 5 SHEET 4 OF 16

NOTES BARNHISEL

H.C. MOSE

R.C. CANTERBURY

DATE 6-18-01

WEATHER CLOUDY

TEMP. +70°

ROUTE S.R. #107

COUNTY WILLIAMS

TOWNSHIP FLORENCE

SECTION 3

T 7 N R 1 E

TYPE MONUMENT P.K. / WASHER

ON SURFACE - ~~BELOW~~ SURFACE

LEFT-☉ PAV'T. - RIGHT ON ☉ 1' W ☉ C.R. #5

10.0' TO LT. EDGE PAVEMENT

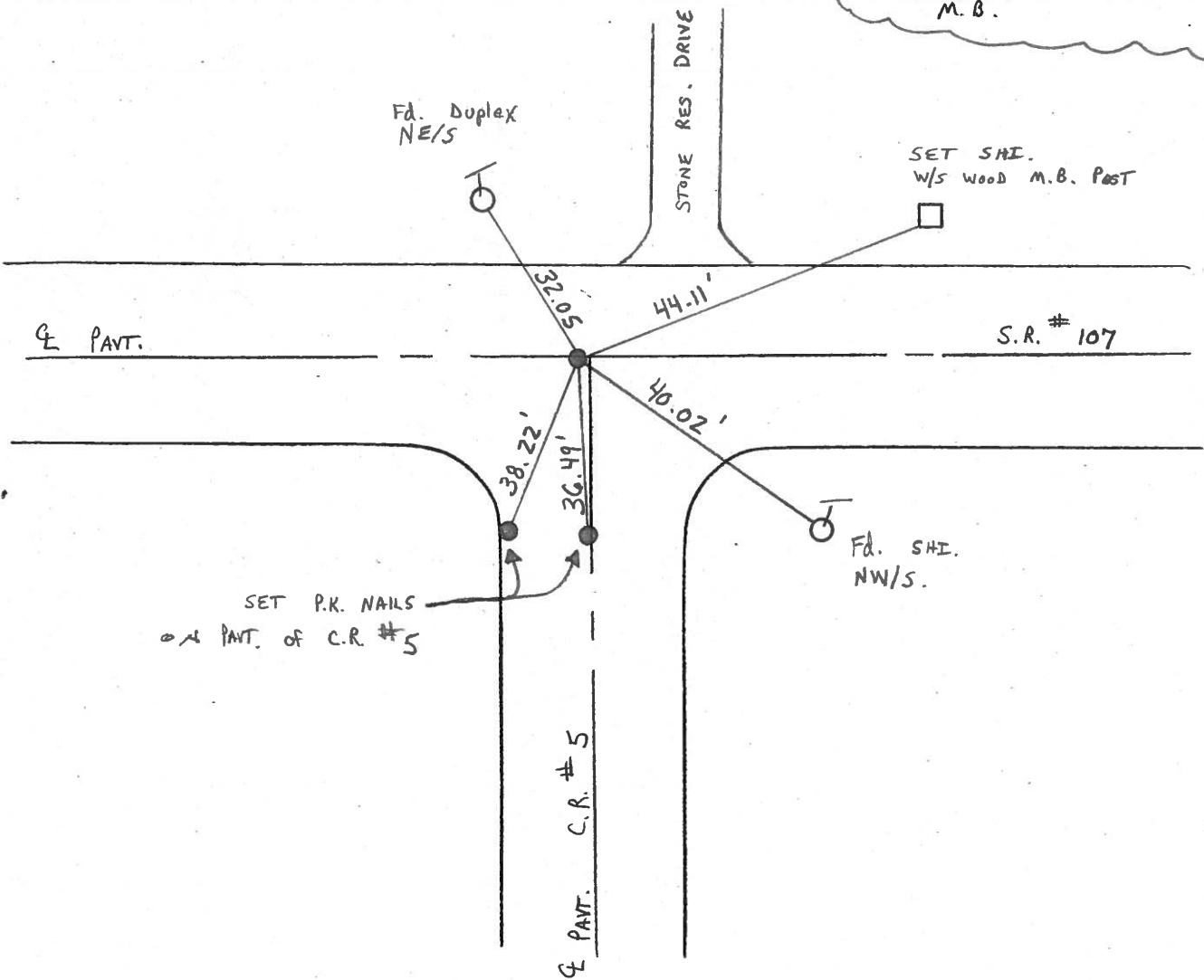
S.L.M. 106+10

3	2
10	11



RECORD: P.I STA 106+17.45

RESET P.K./WASHER
 10-21-02
 M.B.



O.D.O.T. DISTRICT 2 SURVEY OFFICE

PERSONNEL

REFERENCE NO. 5

SHEET 4 OF 18

NOTES LOEHRKE

H.C. CURTIS

R.C. ROMETO

DATE 5-20-92

WEATHER CLEAR

TEMP. +75

ROUTE S.R. 107

COUNTY WILLIAMS

TOWNSHIP FLORENCE

SECTION 3

T 7 N R 1 E

TYPE MONUMENT Sm. R.R. Spike SET PK/WASHER 8/11/92 AC

ON SURFACE - BELOW Yes

~~LEFT~~ - Q PAV'T. - RIGHT 0.3' 1'w Q C.R.#5

10.3 TO LT EDGE PAVEMENT

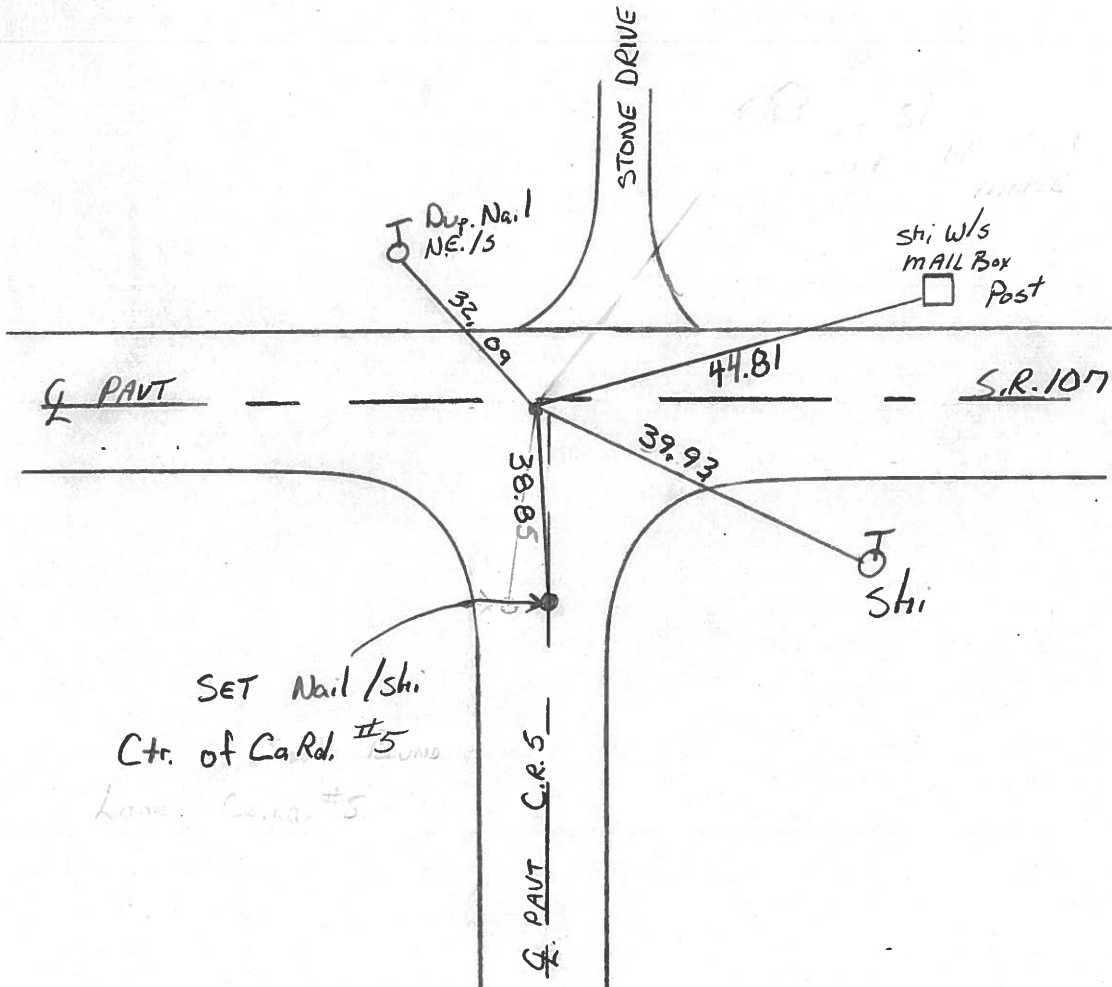
S.L.M. 106+19

3	2
10	11



RECORD P.I.

Sta 106+17.45



O.D.O.T. DISTRICT 2 SURVEY OFFICE

PERSONNEL

REFERENCE NO. 5

SHEET 5 OF

NOTES LOEHRKE

H.C. BARNHISEL

R.C. HOFFMAN

DATE 3-29-85

WEATHER PT CLOUDY

TEMP. +55

ROUTE SR 107

COUNTY WILLIAMS

TOWNSHIP FLORENCE

SECTION 2

T 7 N R 1 E

TYPE MONUMENT 1" PIPE

~~ON SURFACE~~ - BELOW 2 1/2"

~~LEFT - & PAVT. - RIGHT~~ 0.3' 1' W. & C.R.#5

9.8 TO LF EDGE PAVEMENT

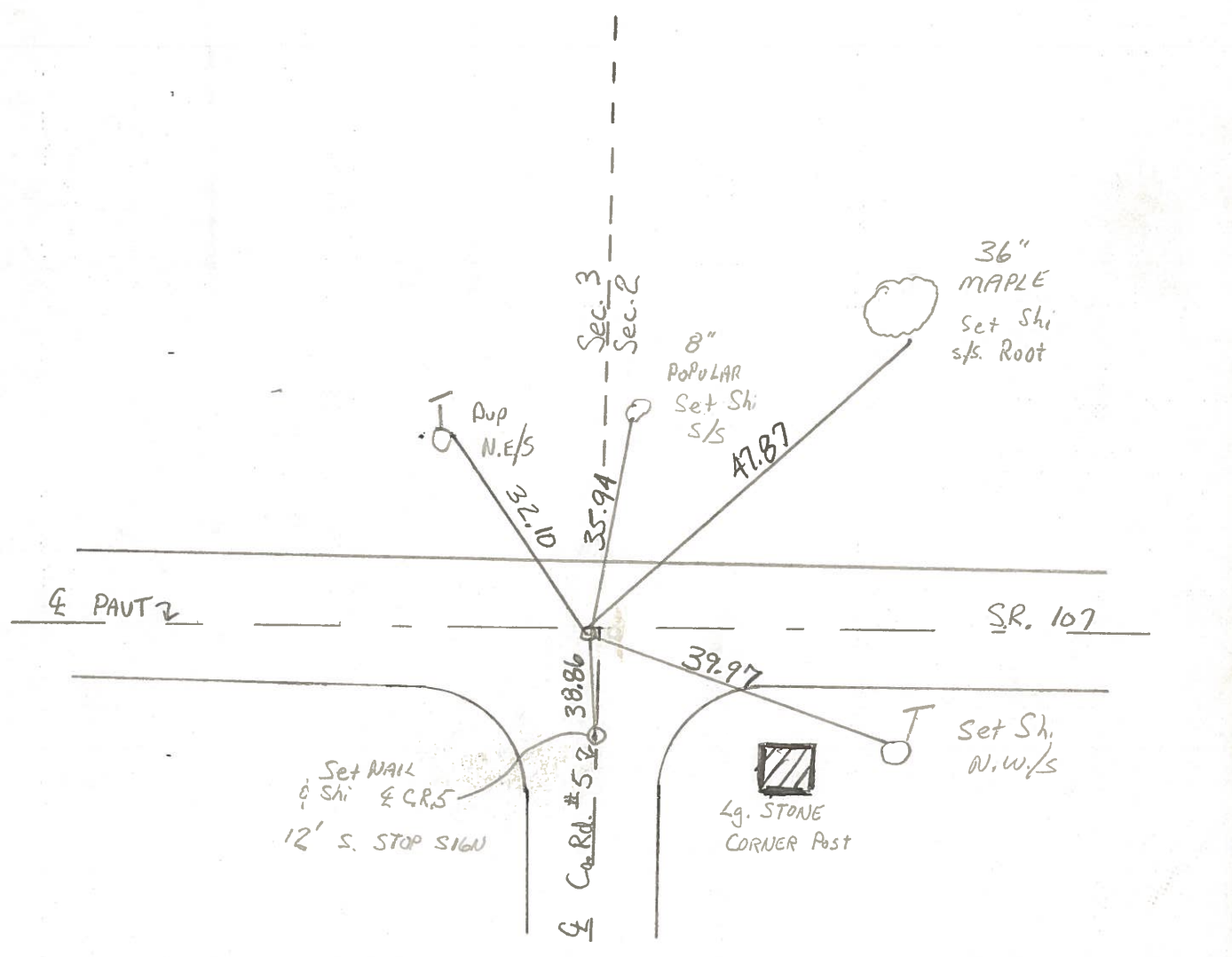
S.L.M. 106 + 20

3	2
10	11



P.I. STA 106+17.45

Set Sm. R.R. Spk.
5-22-85 C.L.



PERSONNEL TITLE PERSONNEL TITLE

COUNTY Williams DATE 23/24 Mar 76

Red Beach
W. Knape

S. R. 107 WEATHER _____

SEC. Florence TWP. TEMP _____

DESCRIPTION CONTROL POINTS JOB NO. _____

