

O.D.O.T. DISTRICT 2 SURVEY OFFICE (USE ONLY)

PERSONNEL

REFERENCE NO. 6

SHEET 6 OF 16

NOTES RHOADES

DATE 9/27/18

ROUTE SR 107

H.C. O'DONNELL

WEATHER CLOUDY

COUNTY WILLIAMS

R.C. RHOADES

TEMP. 55°

TOWNSHIP FLORENCE

SECTION 2

DWG BY NIESE PID 105474

T 7 N R 1 E

TYPE MONUMENT MAG/WASHER

ON SURFACE - ~~BELOW~~ ON

OFFSET ☉ PAVEMENT ON LT : RT

9.8' TO RT EDGE PAVEMENT

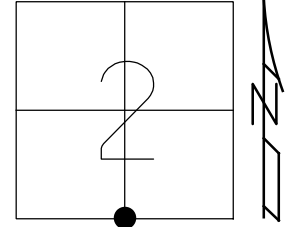
STATION: 132+52

HORZ. DATUM: -

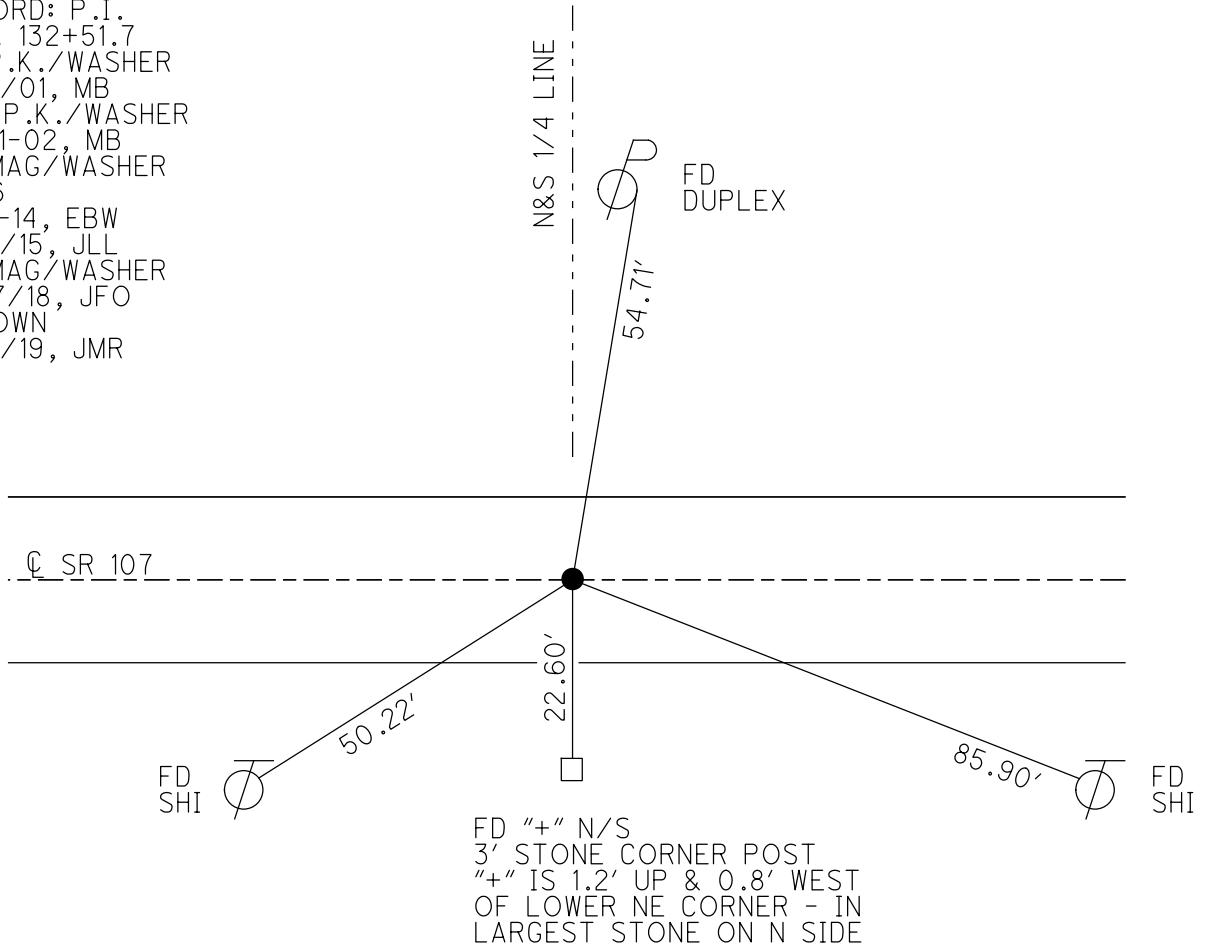
GEOID: -

GRID: NORTHING: 706849.532

EASTING: 1361040.108



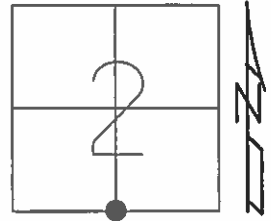
RECORD: P.I.  
 STA. 132+51.7  
 FD P.K./WASHER  
 6/18/01, MB  
 SET P.K./WASHER  
 10-21-02, MB  
 FD MAG/WASHER  
 REF6  
 6-17-14, EBW  
 1/26/15, JLL  
 FD MAG/WASHER  
 9/27/18, JFO  
 1" DOWN  
 9/18/19, JMR



O.D.O.T. DISTRICT 2 SURVEY OFFICE (USE ONLY)

PERSONNEL \_\_\_\_\_ REFERENCE NO. 6 SHEET 6 OF 18  
 NOTES WESTFALL DATE 6-17-14 ROUTE SR 107  
 H.C. WESTFALL WEATHER CLOUDY, WINDY COUNTY WILLIAMS  
 R.C. THOMAS TEMP. 85° TOWNSHIP FLORENCE  
 \_\_\_\_\_ SECTION 2  
 \_\_\_\_\_ T 7 N 1 E

TYPE MONUMENT PK/WASHER  
 ON SURFACE - ~~BELOW~~ ON  
~~LEFT - C~~ PAV'T - ~~RIGHT~~ ON  
9.8' TO RT EDGE PAVEMENT  
 S.L.M. 132+52



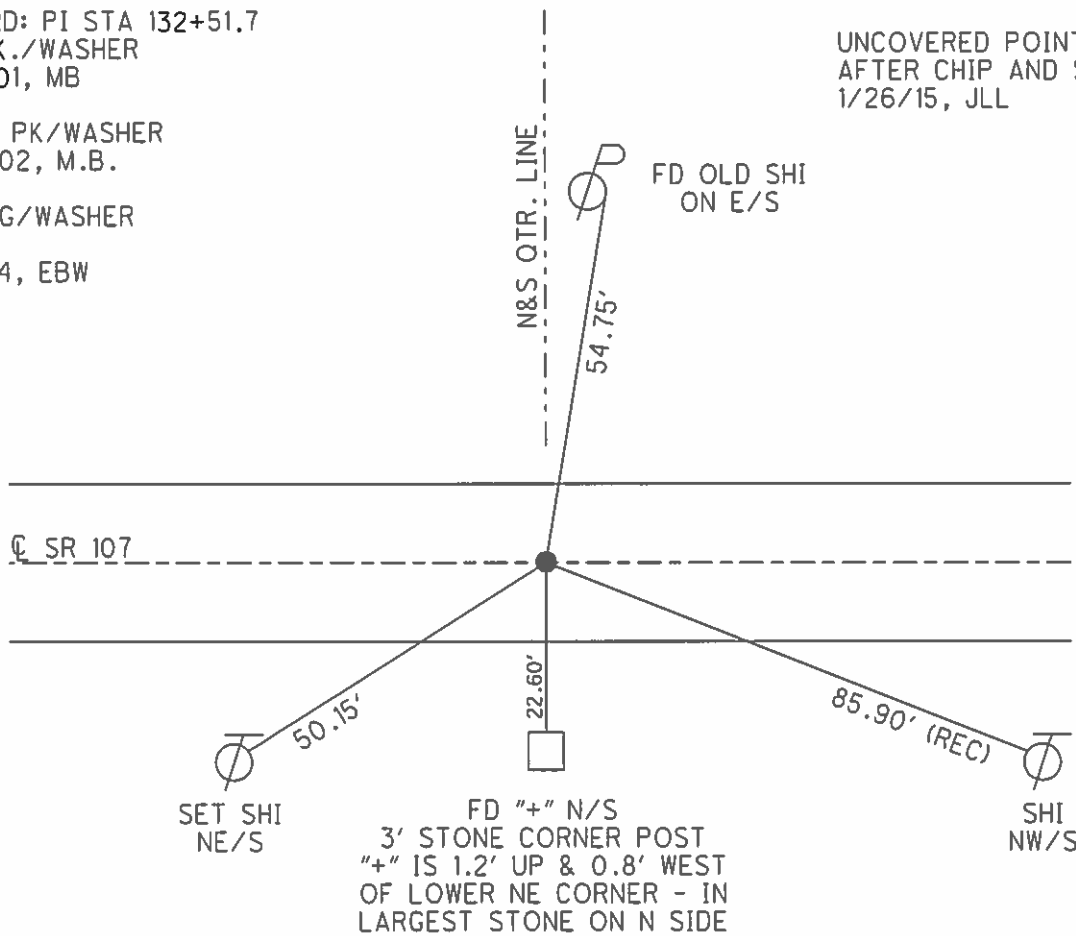
Grid: Northing: 706849.532 Easting: 1361040.108

RECORD: PI STA 132+51.7  
 FD P.K./WASHER  
 6/18/01, MB

RESET PK/WASHER  
 10-21-02, M.B.

FD MAG/WASHER  
 REF6  
 6-17-14, EBW

UNCOVERED POINT  
 AFTER CHIP AND SEAL  
 1/26/15, JLL



# O.D.O.T. DISTRICT 2 SURVEY OFFICE

PERSONNEL

REFERENCE NO. 6

SHEET 5 OF 16

NOTES BARNHISEL

H.C. MOSEY

R.C. CANTERBURY

DATE 6-18-01

WEATHER CLOUDY

TEMP. +70°

ROUTE S.R. # 107

COUNTY WILLIAMS

TOWNSHIP FLORENCE

SECTION 2

T 7 N R 1 E

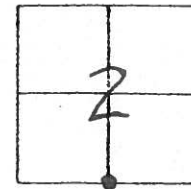
TYPE MONUMENT P.K. / WASHER

ON SURFACE - ~~BELOW~~ SURFACE

~~LEFT- & PAVT.~~ - ~~RIGHT~~ ON ♀

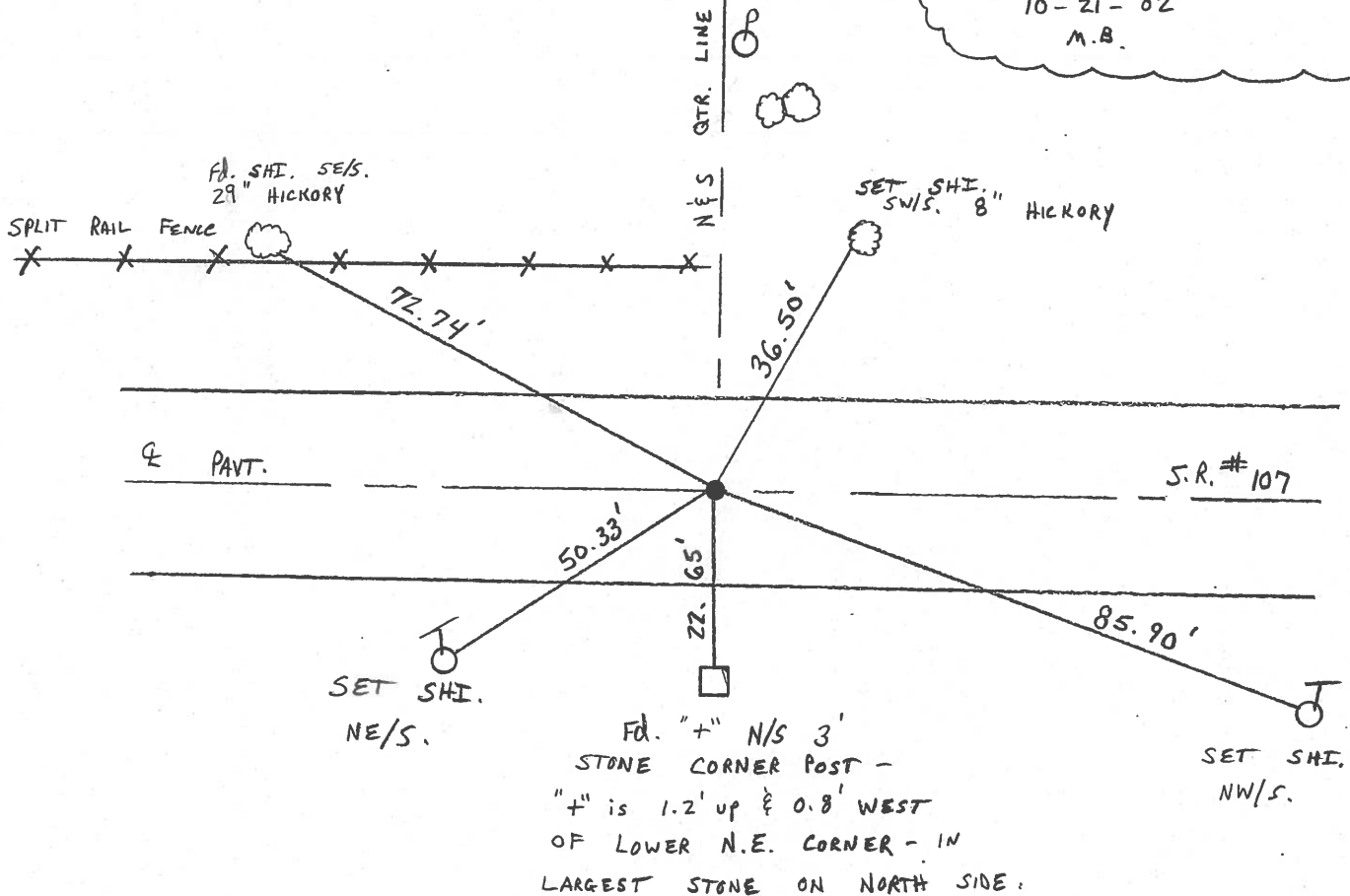
9.8' TO RT. EDGE PAVEMENT

S.L.M. 132 + 52



RECORD: P.I. STA 132 + 51.7

RESET P.K. / WASHER  
10-21-02  
M.B.



FD. "+" N/S 3'  
STONE CORNER POST -  
"+" is 1.2' up & 0.8' WEST  
OF LOWER N.E. CORNER - IN  
LARGEST STONE ON NORTH SIDE.

# O.D.O.T. DISTRICT 2 SURVEY OFFICE

PERSONNEL \_\_\_\_\_

REFERENCE NO. 6

SHEET 5 OF 18

NOTES LOHRKE

H.C. CURTIS

R.C. ROMETO

DATE 5-20-92

WEATHER CLEAR

TEMP. +75

ROUTE S.R. 107

COUNTY Williams

TOWNSHIP FLORENCE

SECTION 2

T 7 N R 1 E

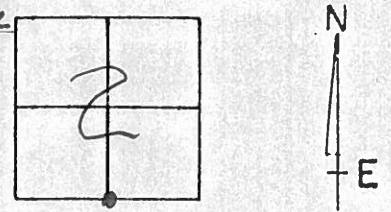
TYPE MONUMENT Sm. R.R. Spike SET PK/WASHER 8/11/92 AC

ON SURFACE - ~~BELOW~~ Yes

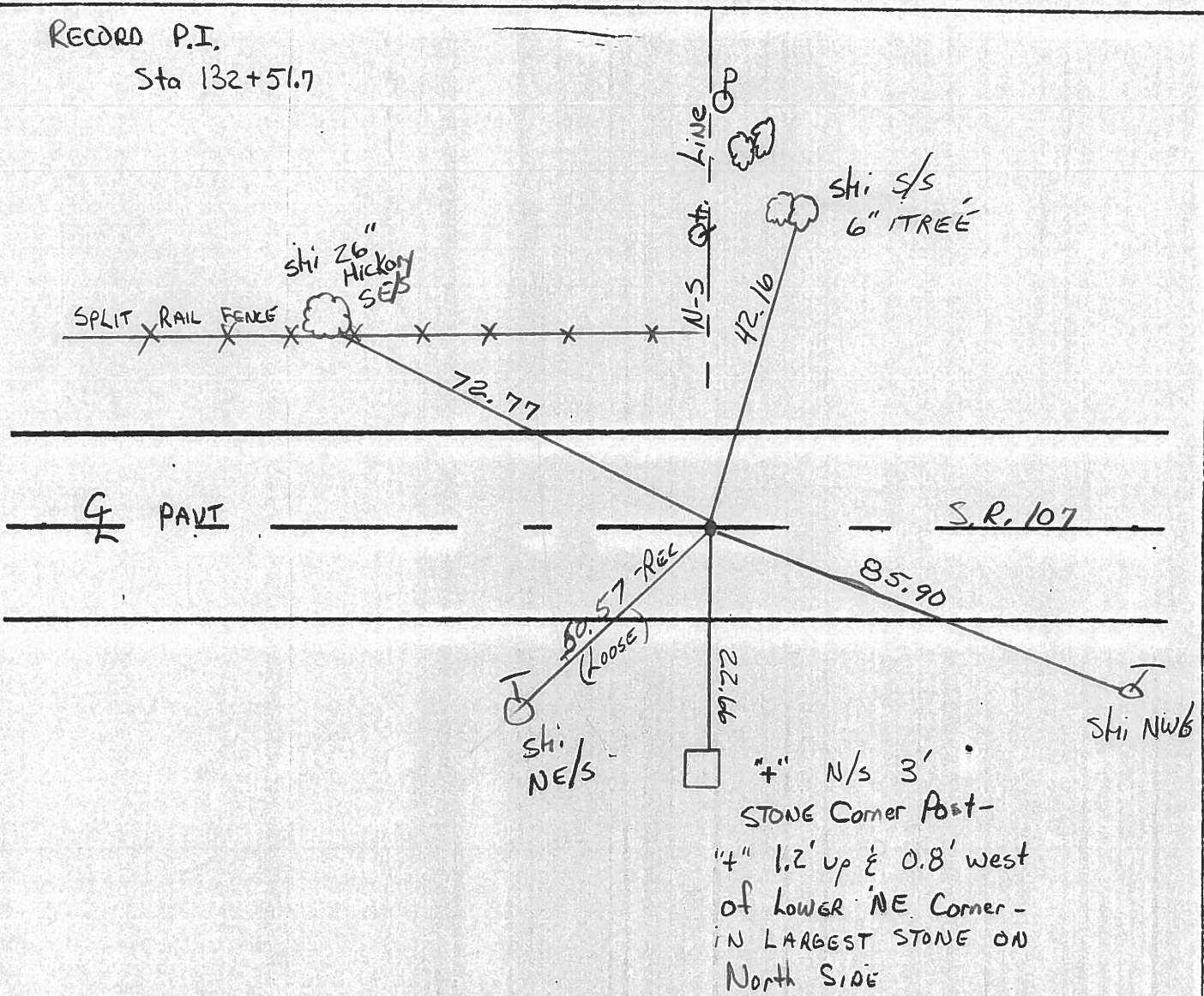
~~LEFT - & PAV'T.~~ - RIGHT 0.3'

TO EDGE PAVEMENT

S.L.M. \_\_\_\_\_



RECORD P.I.  
Sta 132+51.7



# O.D.O.T. DISTRICT 2 SURVEY OFFICE

PERSONNEL

REFERENCE NO. 6

SHEET 6 OF         

NOTES LOEHRKE

H.C. BARANISEL

R.C. Hoffman

DATE 3-29-85

WEATHER PE Cloudy

TEMP. +55

ROUTE SR 107

COUNTY WILLIAMS

TOWNSHIP FLORENCE

SECTION 2

T 7 N R 1 E

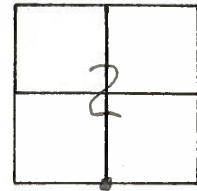
TYPE MONUMENT 1" PIPE

ON SURFACE - BELOW 2"

LEFT PAV'T. - RIGHT 0.4' Rt &

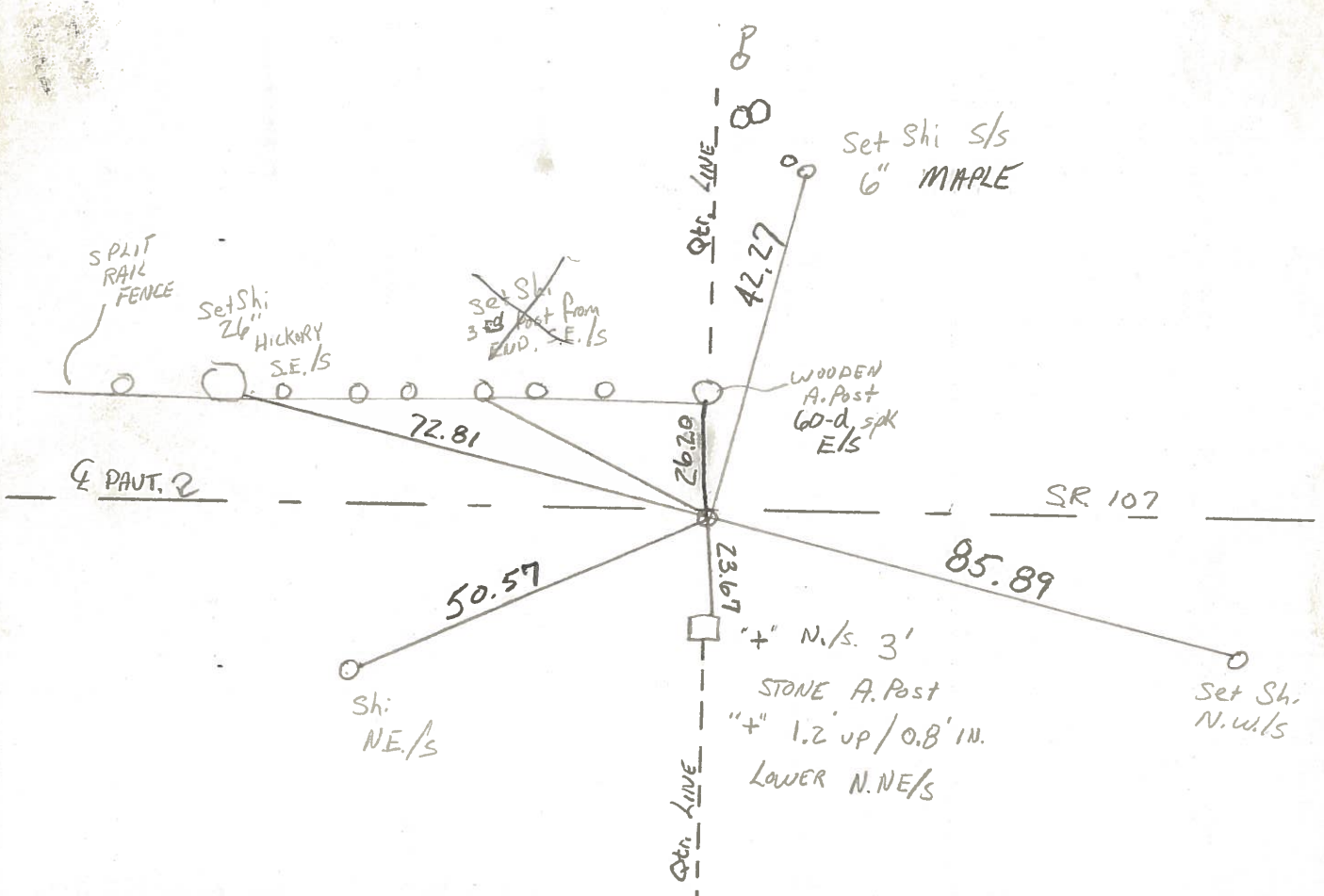
9.8 TO Rt EDGE PAVEMENT

S.L.M. 132+55



PI STA 132+51.7

Set Sm. R.R. Spk  
5-22-85 C.L.



PERSONNEL TITLE PERSONNEL TITLE  
Red Beach  
W. Knape

COUNTY Williams DATE 23/24 Mar 76

S. R. 107 WEATHER

SEC. Florence Twp. TEMP

DESCRIPTION CONTROL POINTS JOB NO.

