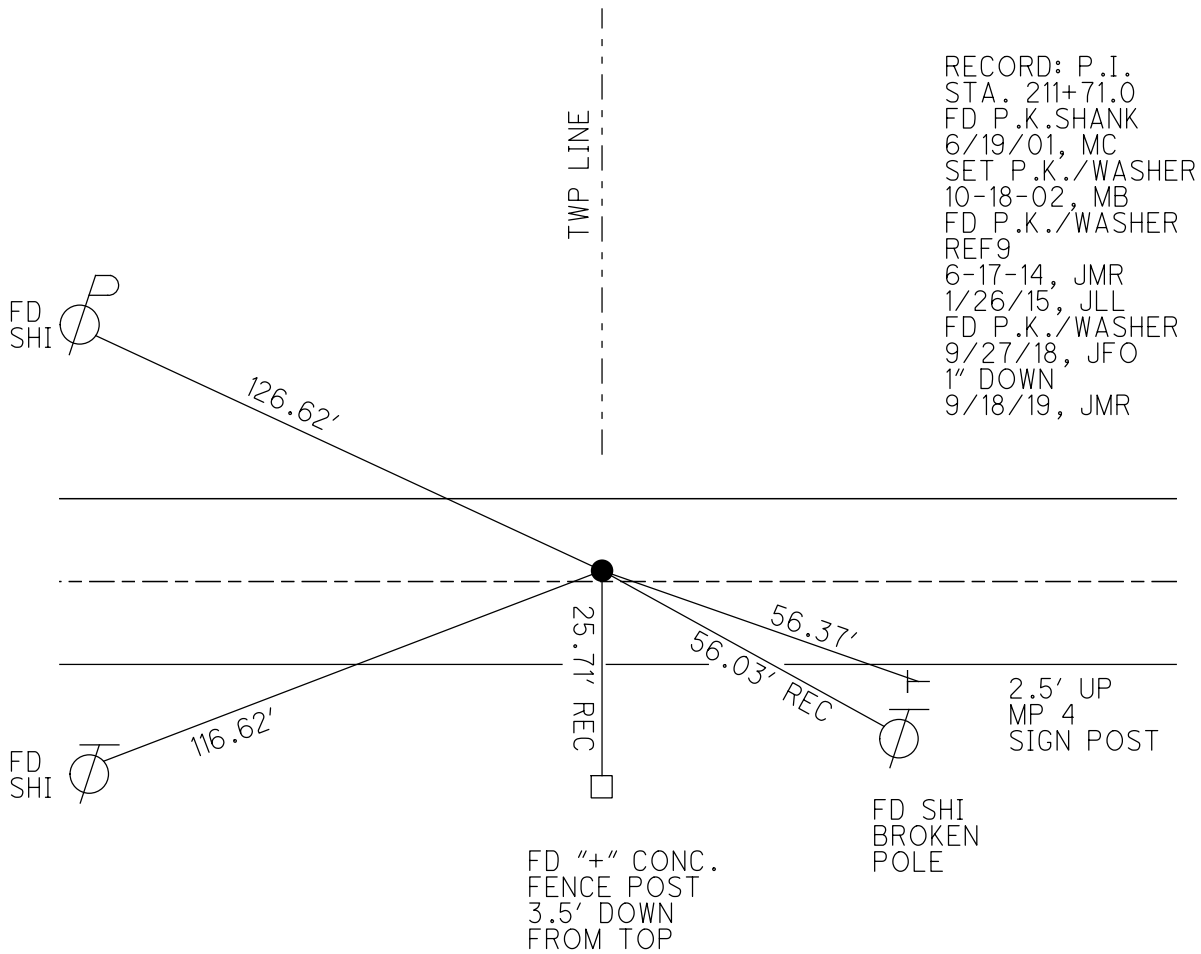
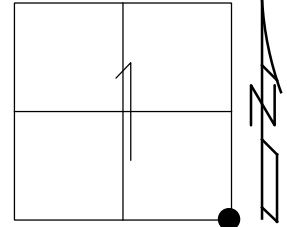


O.D.O.T. DISTRICT 2 SURVEY OFFICE (USE ONLY)

PERSONNEL \_\_\_\_\_ REFERENCE NO. 9 SHEET 10 OF 16  
 NOTES RHOADES DATE 9/27/18 ROUTE SR 107  
 H.C. O'DONNELL WEATHER CLOUDY COUNTY WILLIAMS  
 R.C. RHOADES TEMP. 55° TOWNSHIP SUPERIOR  
 DWG BY NIESE PID 105474 SECTION 6  
 T 7 N R 2 E

TYPE MONUMENT P.K./WASHER  
 ON SURFACE - ~~BELOW~~ ON  
 OFFSET  $\odot$  PAVEMENT 0.5' ~~±~~ : RT  
9.3' TO LT EDGE PAVEMENT  
 STATION: 211+68  
 HORZ.DATUM: - GEOID: -  
 GRID: NORTHING: 706801.246 EASTING: 1368958.704

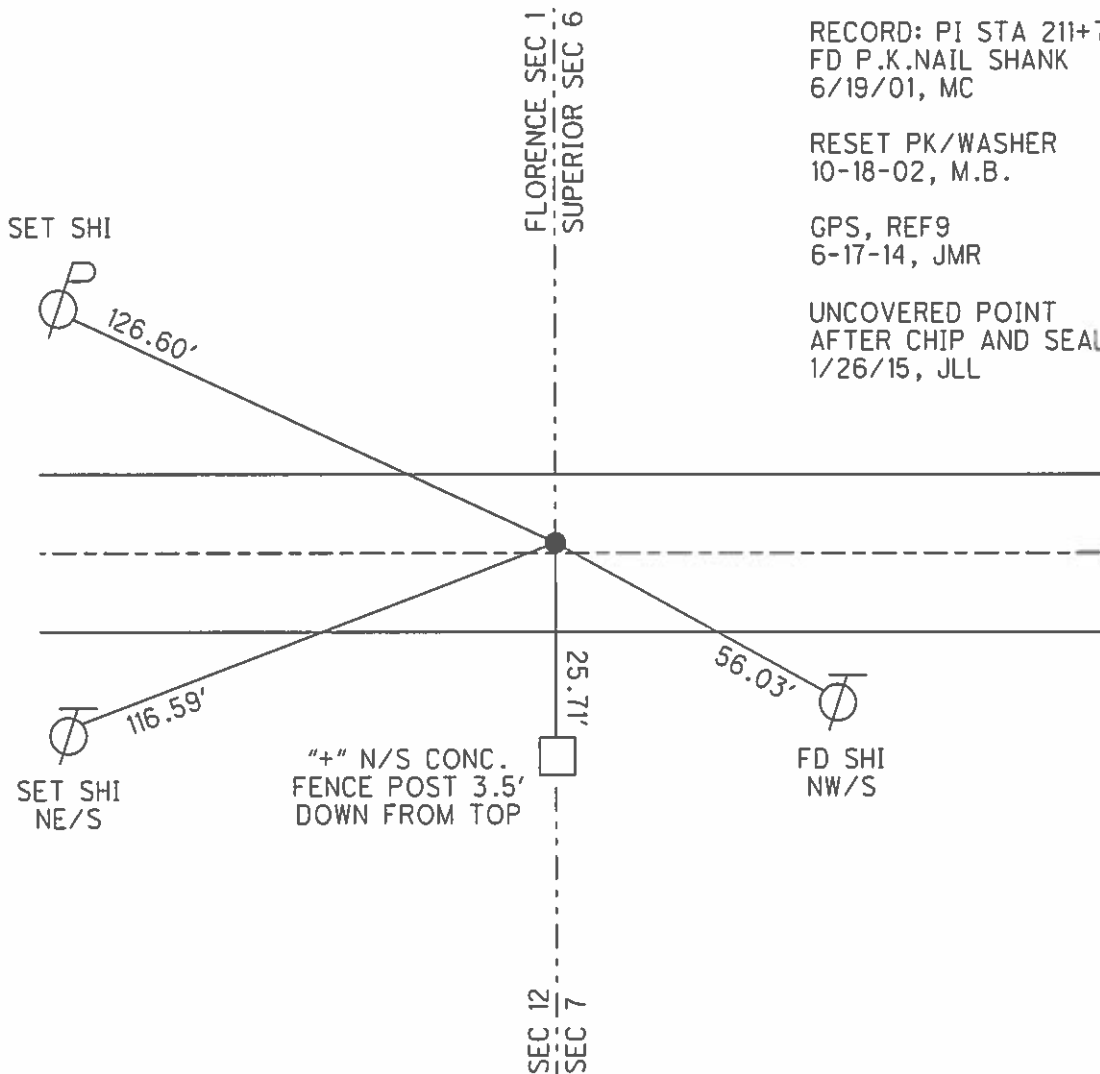
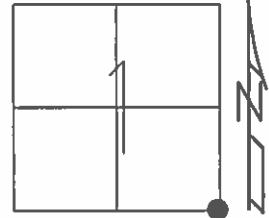


O.D.O.T. DISTRICT 2 SURVEY OFFICE (USE ONLY)

PERSONNEL \_\_\_\_\_ REFERENCE NO. 9 SHEET 10 OF 18  
 NOTES MEYER DATE 7-02-14 ROUTE SR 107  
 H.C. WESTFALL WEATHER CLEAR COUNTY WILLIAMS  
 R.C. THOMAS TEMP. 75° TOWNSHIP SUPERIOR  
 \_\_\_\_\_ RHOADES \_\_\_\_\_ SECTION 6  
 \_\_\_\_\_ T 7 N R 2 E

TYPE MONUMENT PK/WASHER  
 ON SURFACE - ~~BELOW~~ ON \_\_\_\_\_  
 LEFT - ☉ PAV'T - ~~RIGHT~~ 0.5'  
9.3' TO LT EDGE PAVEMENT  
 S.L.M. 211+68

Grid: Northing: 706801.246 Easting: 1368958.704



RECORD: PI STA 211+71.0  
 FD P.K.NAIL SHANK  
 6/19/01, MC

RESET PK/WASHER  
 10-18-02, M.B.

GPS, REF9  
 6-17-14, JMR

UNCOVERED POINT  
 AFTER CHIP AND SEAL  
 1/26/15, JLL

# O.D.O.T. DISTRICT 2 SURVEY OFFICE

PERSONNEL

REFERENCE NO. 9

SHEET 9 OF 16

NOTES MOSE

H.C. MOSE

R.C. CANTERBURY

DATE 6-19-01

WEATHER CLEAR

TEMP. +95°

ROUTE S.R. # 107

COUNTY WILLIAMS

TOWNSHIP SUPERIOR

SECTION 6

T 7 N R 2 E

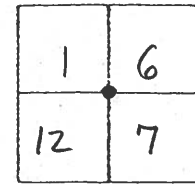
TYPE MONUMENT P.K. SHANK

ON SURFACE - ~~BELOW~~ SURFACE

LEFT-~~E~~ PAV'T. - ~~RIGHT~~ 0.5' LT &

9.3' TO LT. EDGE PAVEMENT

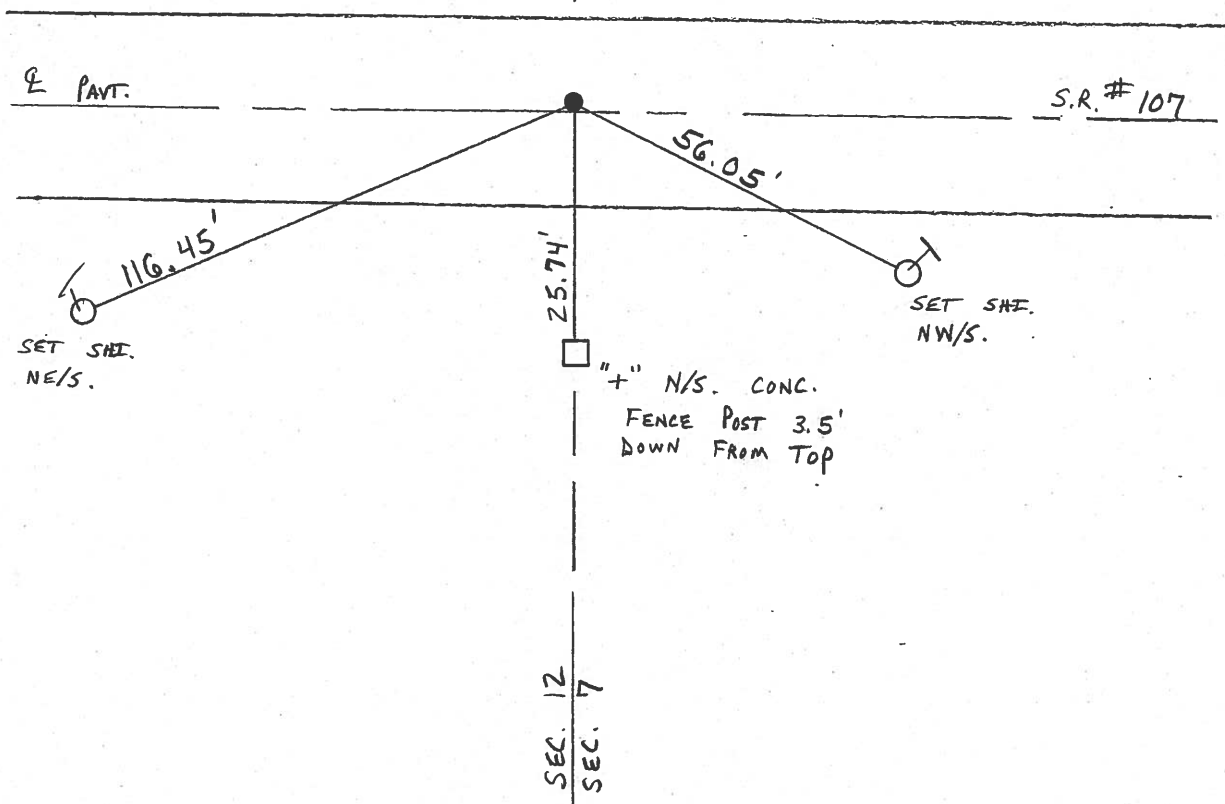
S.L.M. 211 + 68



RECORD: P.I. STA 211+71.0

RESET P.K. / WASHER  
10-18-02  
M.B.

FLORENCE SEC. 1  
SUPERIOR SEC. 6



# O.D.O.T. DISTRICT 2 SURVEY OFFICE

PERSONNEL

REFERENCE NO. 9

SHEET 9 OF 18

NOTES LOHRKE

H.C. CURTIS

DATE 5-20-92

ROUTE S.R. 107

R.C. ROMETO

WEATHER CLEAR

COUNTY Williams

TEMP. +80

TOWNSHIP SUPERIOR

SECTION 6

T 7 N R 2 E

TYPE MONUMENT Sm. R.P. Spike SET PK/WASHER

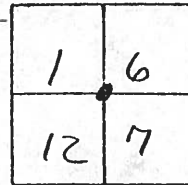
ON SURFACE - BELOW Yes

LEFT- & PAV'T. - RIGHT 0.5'

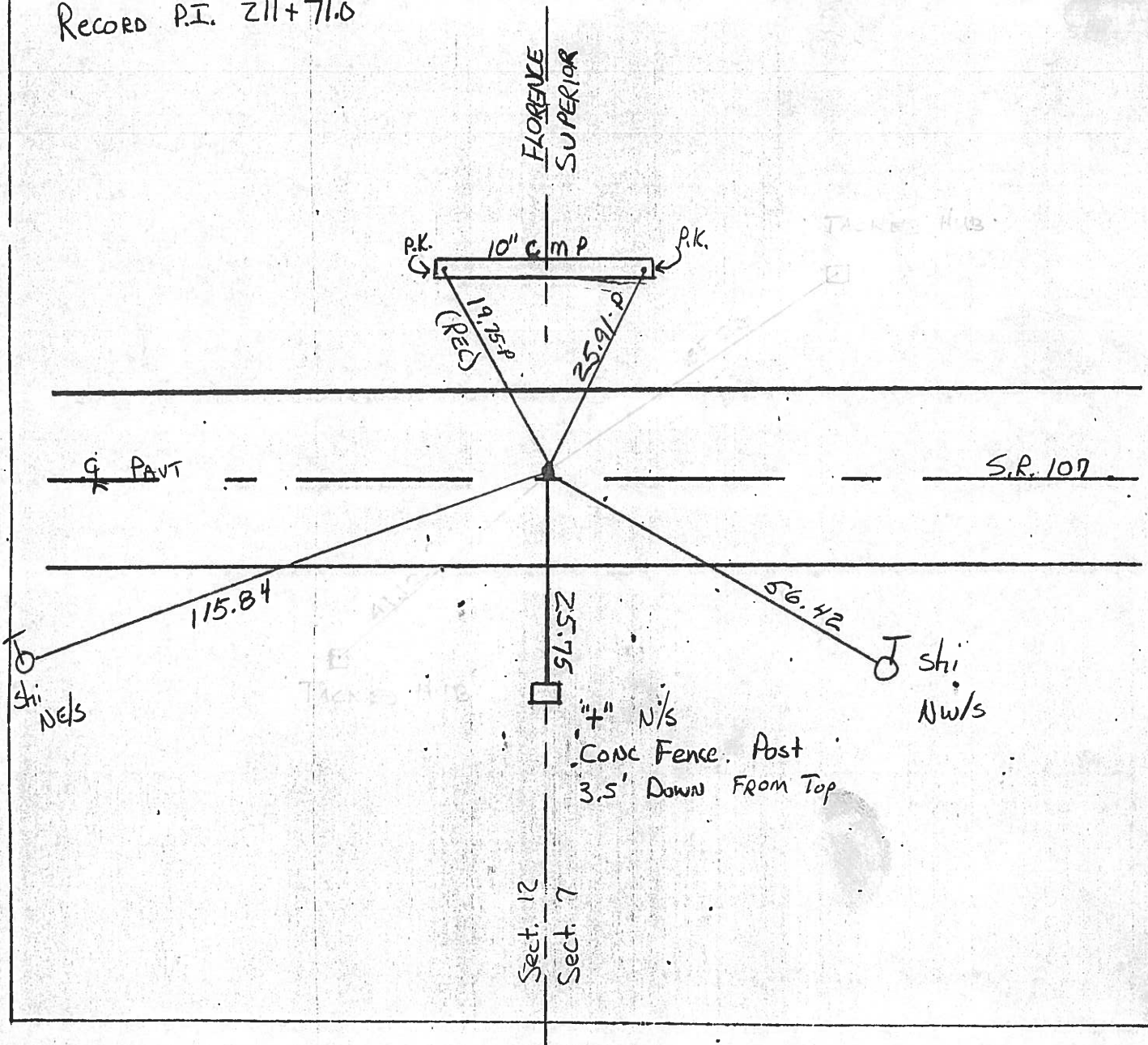
9.3 TO Lt EDGE PAVEMENT

S.L.M. 211774

8-4-92 ac



Record P.I. 211+71.0



# O.D.O.T. DISTRICT 2 SURVEY OFFICE

PERSONNEL

REFERENCE NO. 9 (21) SHEET 10 OF       

NOTES LOEHRYE  
 H.C. BARNHISEL  
 R.C. Hoffman

DATE 3-29-85  
 WEATHER PE Cloudy  
 TEMP. +55

ROUTE SR. 107  
 COUNTY WILLIAMS  
 TOWNSHIP SUPERIOR  
 SECTION 6  
T 7 N R 2 E

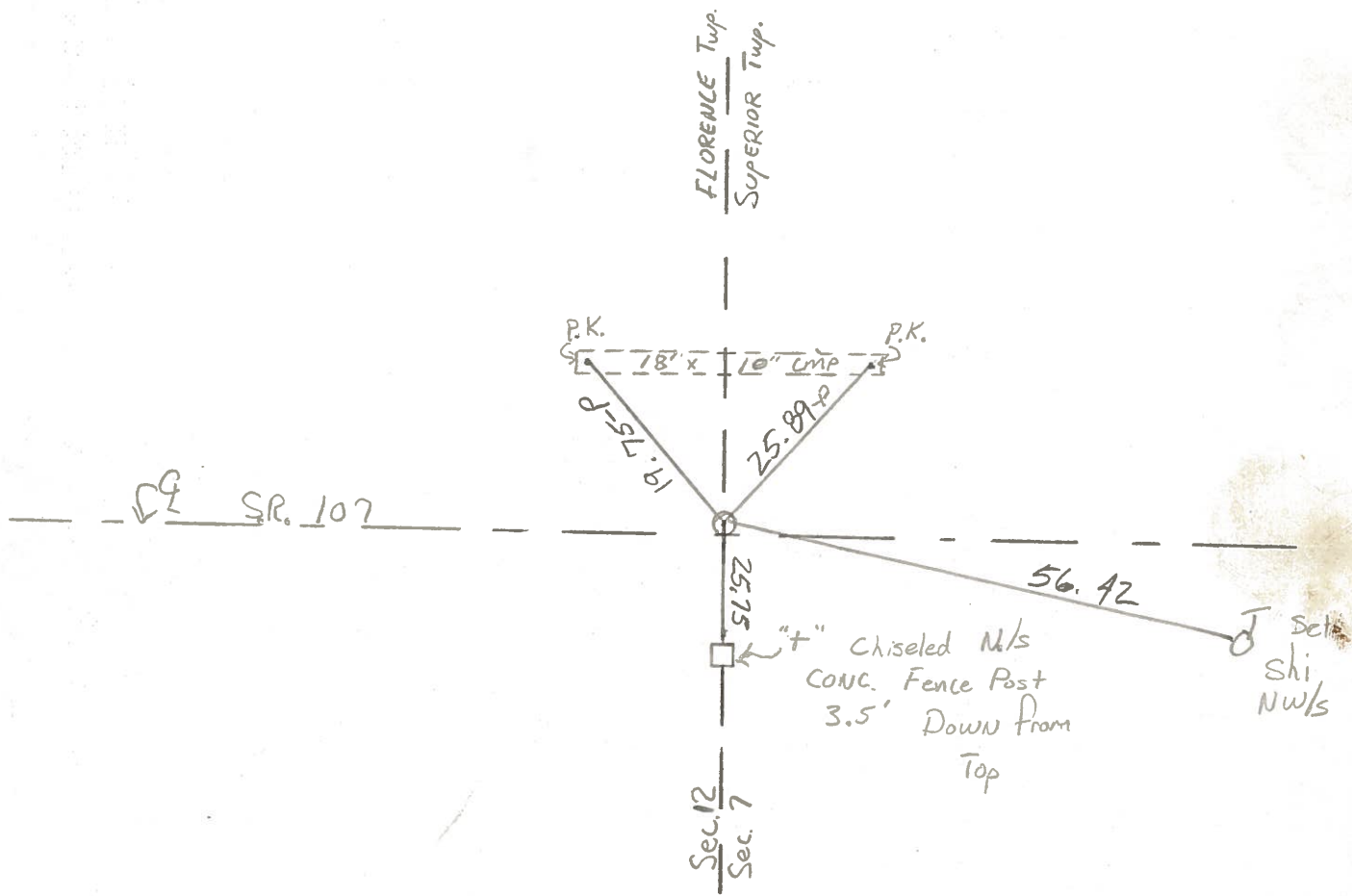
TYPE MONUMENT 1" PIPE  
 ON ~~SURFACE~~ - BELOW 1 1/2" BELOW  
 LEFT - ~~C PAV T.~~ RIGHT 0.5 LF  
9.3 TO LF EDGE PAVEMENT  
 S.L.M. 211+76

1	6
12	7



PI Sta 211+71.0

Set Sm. RR Spk  
 5-22-85 C.L.





PERSONNEL TITLE PERSONNEL TITLE

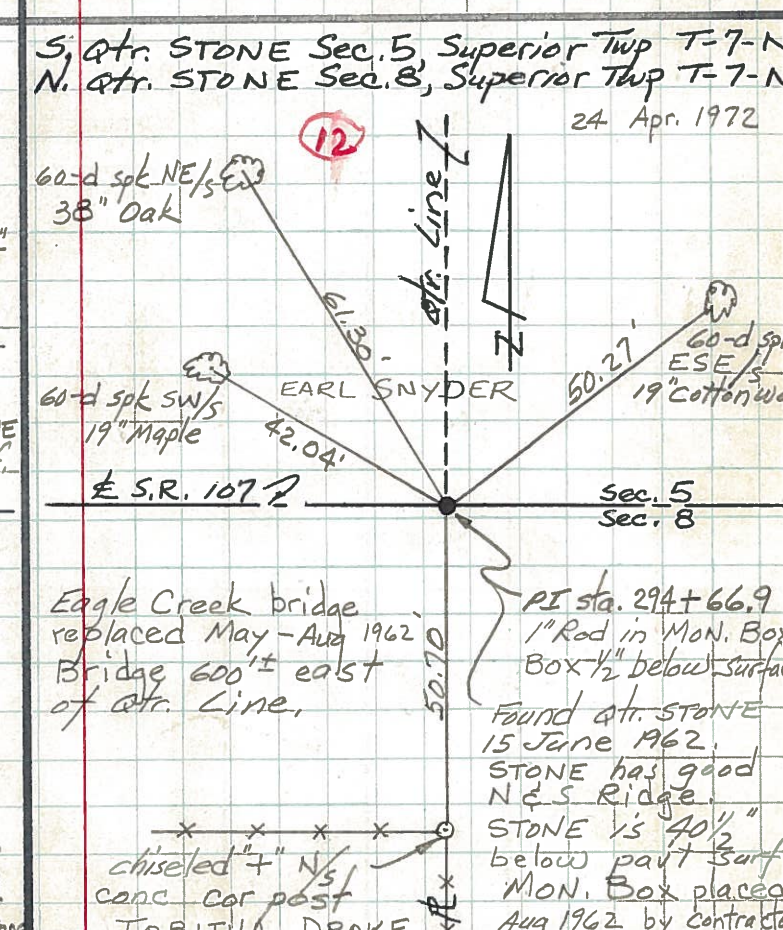
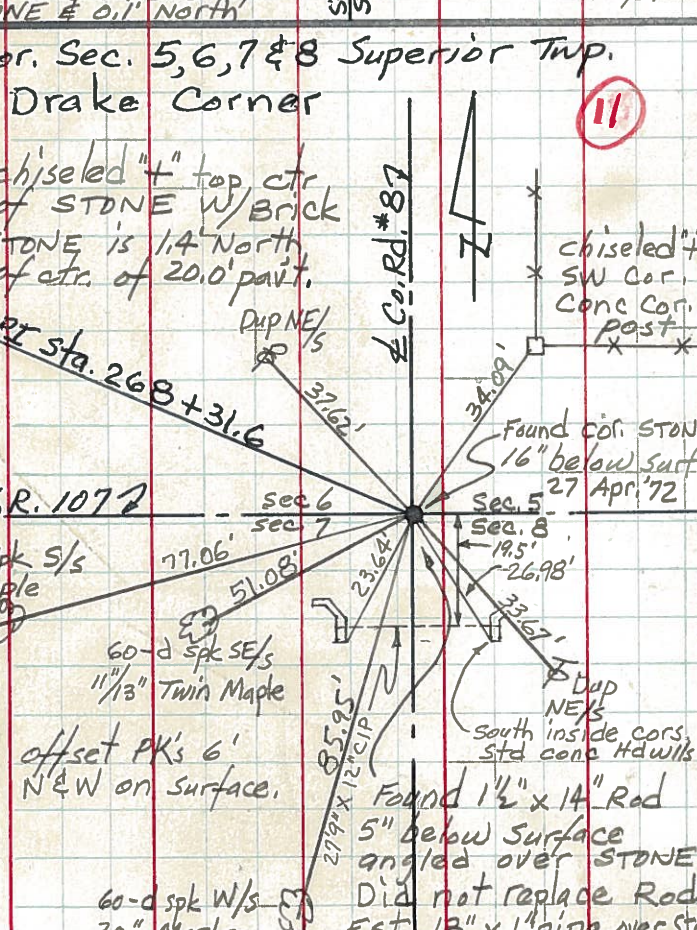
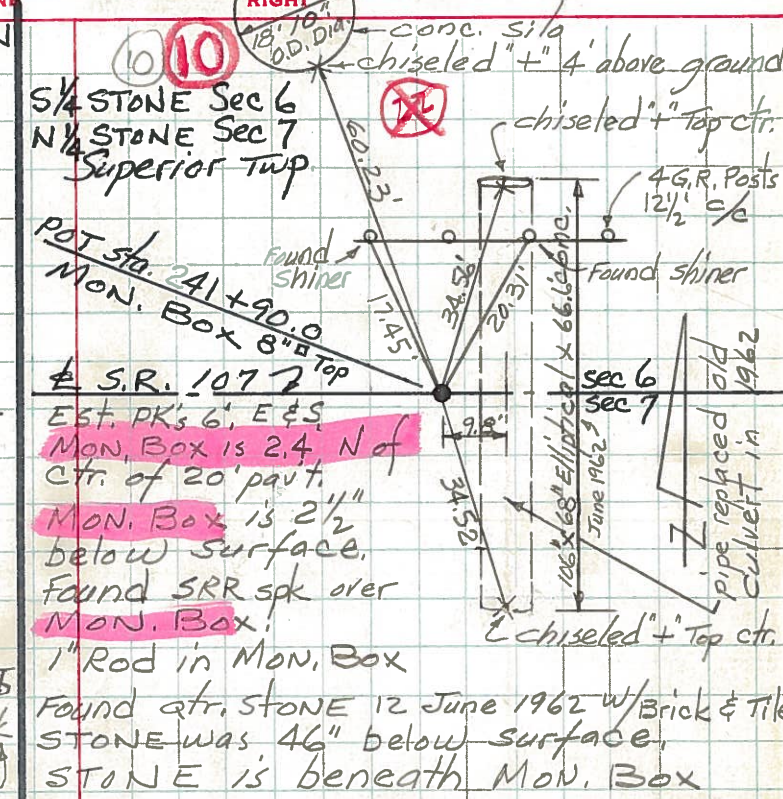
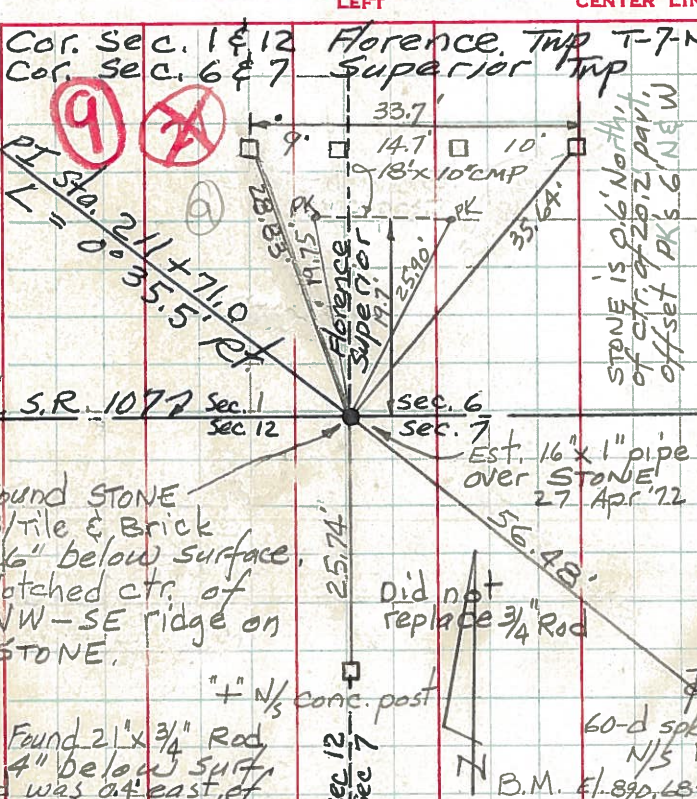
Red Beach,  
Newcomb  
Knappe

COUNTY Wms DATE Apr. 1972

S. R. 107 WEATHER

SEC. Superior Twp. TEMP.

DESCRIPTION: CONTROL POINTS JOB NO.





PERSONNEL TITLE PERSONNEL TITLE

Red Beach,  
Newcomb  
Knappe

COUNTY Wms

DATE Apr. 1972

S. R. 107

WEATHER \_\_\_\_\_

SEC. Superior Twp.

TEMP. \_\_\_\_\_

DESCRIPTION

CONTROL POINTS

JOB NO. \_\_\_\_\_

LEFT CENTER LINE RIGHT

