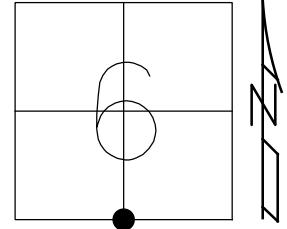


O.D.O.T. DISTRICT 2 SURVEY OFFICE (USE ONLY)

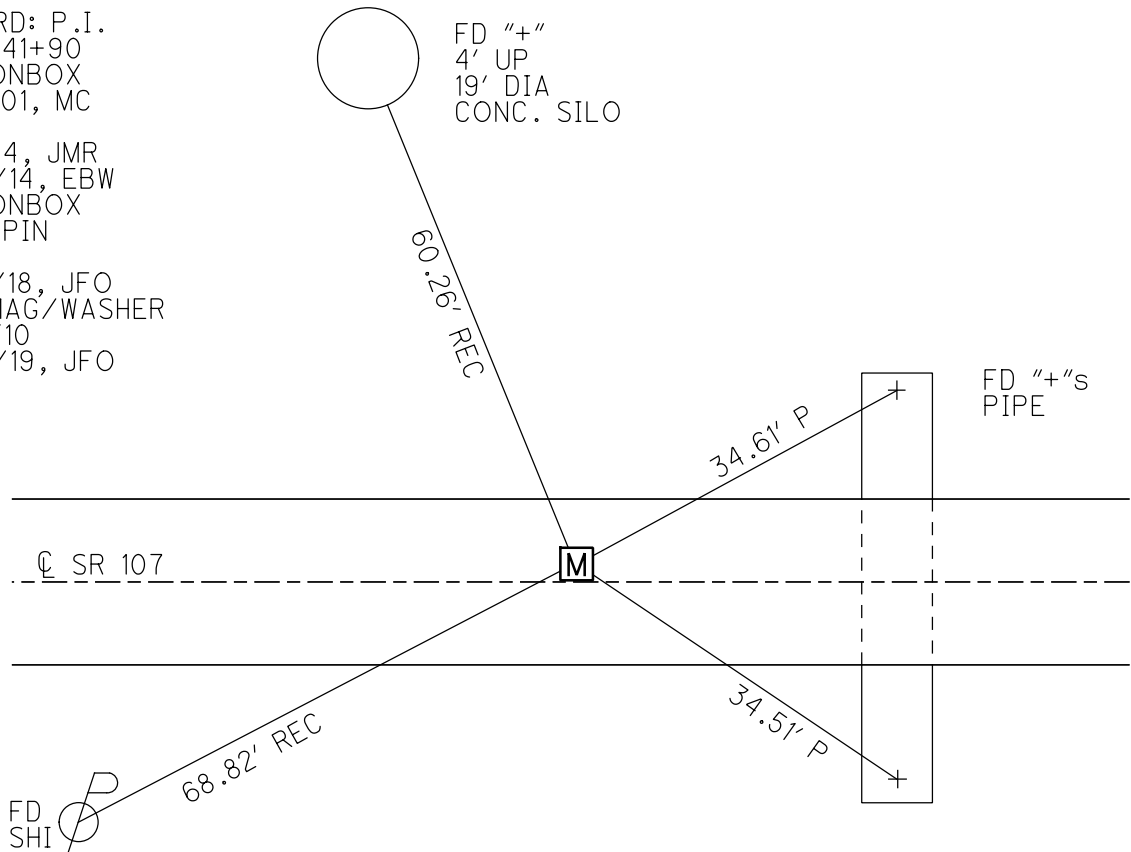
PERSONNEL \_\_\_\_\_ REFERENCE NO. 10 SHEET 11 OF 16  
 NOTES O'DONNELL DATE 8/30/19 ROUTE SR 107  
 H.C. O'DONNELL WEATHER SUNNY COUNTY WILLIAMS  
 R.C. AUBLE TEMP. 69° TOWNSHIP SUPERIOR  
 DWG BY NIESE PID 105474 SECTION 6  
 T 7 N R 2 E

TYPE MONUMENT MONBOX W/1" IPIN  
 ON SURFACE - ~~BELOW~~ ON  
 OFFSET Q PAVEMENT 2.5' LT : ~~RT~~  
7.0' TO LT EDGE PAVEMENT  
 STATION: 241+89

HORZ. DATUM: NAD83(2011) GEOID: 2012A  
 GRID: NORTHING: 706771.522 EASTING: 1371977.441



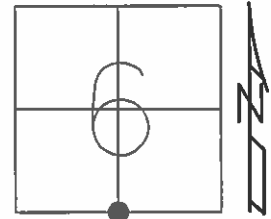
RECORD: P.I.  
 STA. 241+90  
 FD MONBOX  
 6/19/01, MC  
 REF10  
 6-17-14, JMR  
 12/31/14, EBW  
 FD MONBOX  
 W/1" IPIN  
 REF10  
 9/28/18, JFO  
 SET MAG/WASHER  
 CKREF10  
 8/30/19, JFO



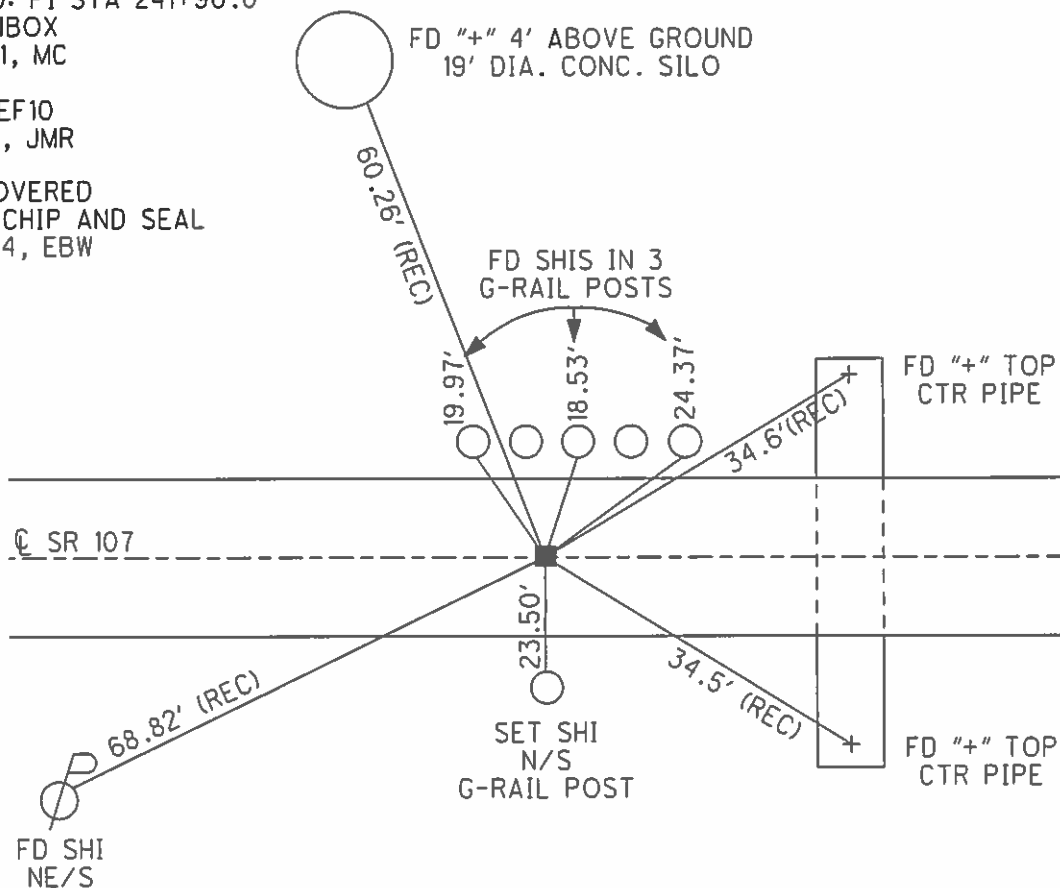
**O.D.O.T. DISTRICT 2 SURVEY OFFICE (USE ONLY)**

PERSONNEL	REFERENCE NO.	<u>10</u>	SHEET	<u>11</u>	OF	<u>18</u>
NOTES	MEYER	DATE	<u>7-02-14</u>	ROUTE	<u>SR 107</u>	
H.C.	<u>WESTFALL</u>	WEATHER	<u>CLEAR</u>	COUNTY	<u>WILLIAMS</u>	
R.C.	<u>THOMAS</u>	TEMP.	<u>75°</u>	TOWNSHIP	<u>SUPERIOR</u>	
	<u>RHOADES</u>			SECTION	<u>6</u>	
				T <u>7</u> N	R <u>2</u> E	

TYPE MONUMENT MON BOX  
 ON SURFACE - ~~BELOW~~ ON \_\_\_\_\_  
 LEFT - ☉ PAV'T - ~~RIGHT~~ 2.5'  
7.0' TO LT EDGE PAVEMENT  
 S.L.M. 241+89  
 Grid: Northing: 706771.551 Easting: 1371977.412



RECORD: PI STA 241+90.0  
 FD MONBOX  
 6/19/01, MC  
 GPS, REF10  
 6-17-14, JMR  
 NOT COVERED  
 AFTER CHIP AND SEAL  
 12/31/14, EBW



# O.D.O.T. DISTRICT 2 SURVEY OFFICE

PERSONNEL

REFERENCE NO. 10

SHEET 10 OF 16

NOTES MOSER

H.C. MOSER

R.C. CANTERBURY

DATE 6-19-01

WEATHER CLEAR

TEMP. +95°

ROUTE S.R. # 107

COUNTY WILLIAMS

TOWNSHIP SUPERIOR

SECTION 6

T 7 N R 2 E

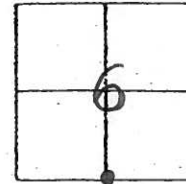
TYPE MONUMENT Mon Box

ON SURFACE - ~~BELOW~~ SURFACE

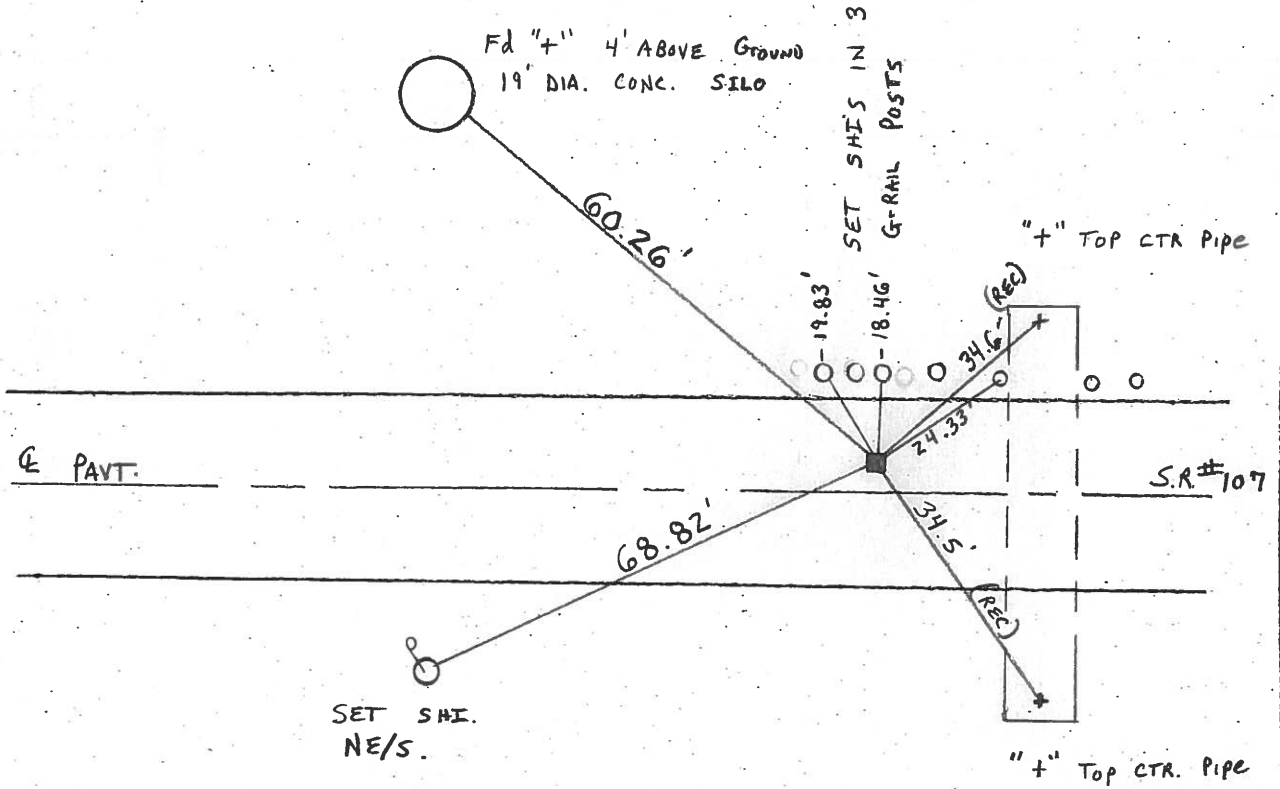
LEFT-☉ PAV'T. - ~~RIGHT~~ 2.5' LT ☉

7.0' TO LT EDGE PAVEMENT

S.L.M. 241 + 89



RECORD : P.I. STA 241 + 90.0



O.D.O.T. DISTRICT 2 SURVEY OFFICE

PERSONNEL

REFERENCE NO. 10

SHEET 10 OF 18

NOTES LOEHRKE

H.C. CURTIS

DATE 5-20-92

ROUTE S.R.107

R.C. ROMERO

WEATHER CLEAR

COUNTY Williams

TEMP. +80

TOWNSHIP SUPERIOR

SECTION 6

8-11-92 DC T 7 N R 2 E

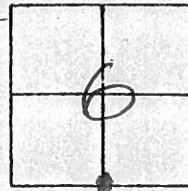
TYPE MONUMENT MON Box-Marked & Visible

ON SURFACE - BELOW Yes

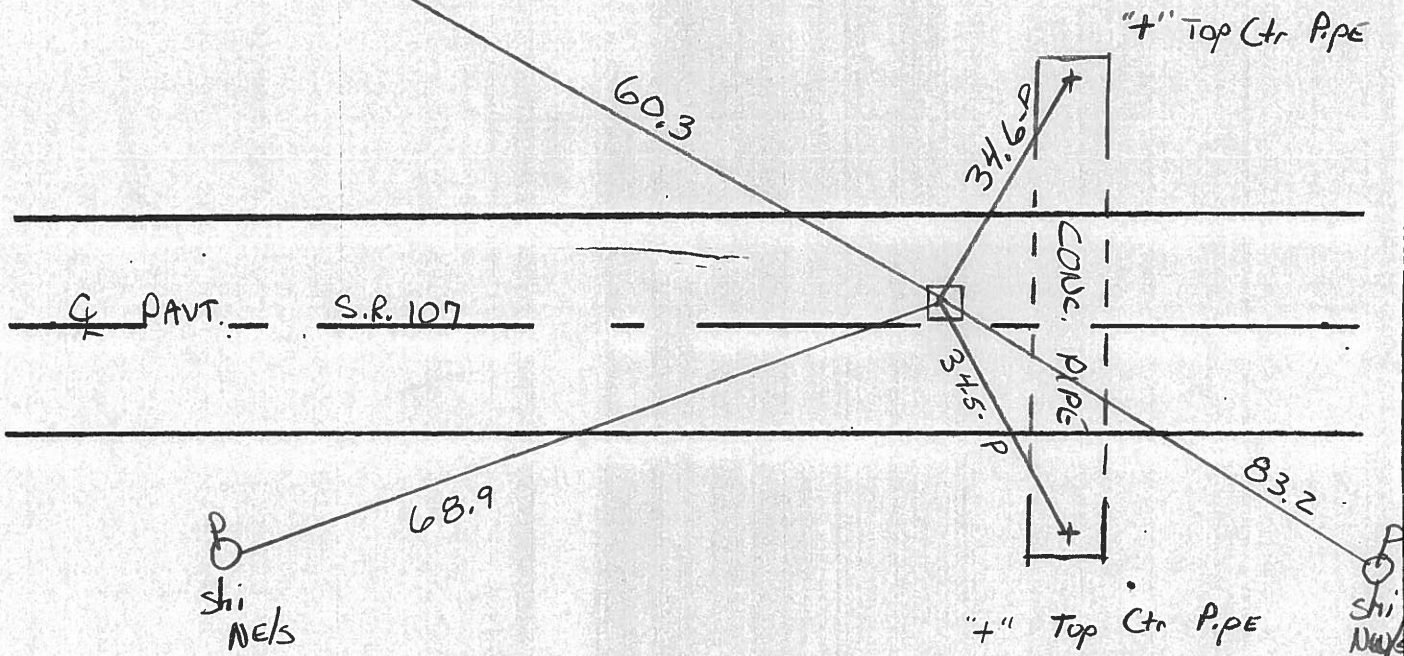
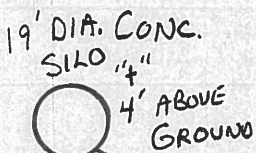
LEFT- & PAV'T. - RIGHT 2.6' Lt

7.6 TO Lt EDGE PAVEMENT

S.L.M. 241+94



Record P.I.  
Sta 241+90.0



# O.D.O.T. DISTRICT 2 SURVEY OFFICE

PERSONNEL

REFERENCE NO. 10 (22)

SHEET 11 OF     

NOTES LOEHRKE

H.C. BARNHISEL

R.C. HOFFMAN

DATE 3-29-85

WEATHER PT CLOUDY

TEMP. +55

ROUTE SR 107

COUNTY WILLIAMS

TOWNSHIP SUPERIOR

SECTION 6

T 7 N R 2 E

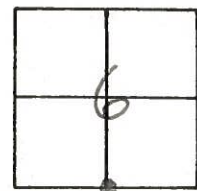
TYPE MONUMENT MON BOX

ON SURFACE - BELOW 2"

LEFT - & PART - RIGHT 2.2' LF

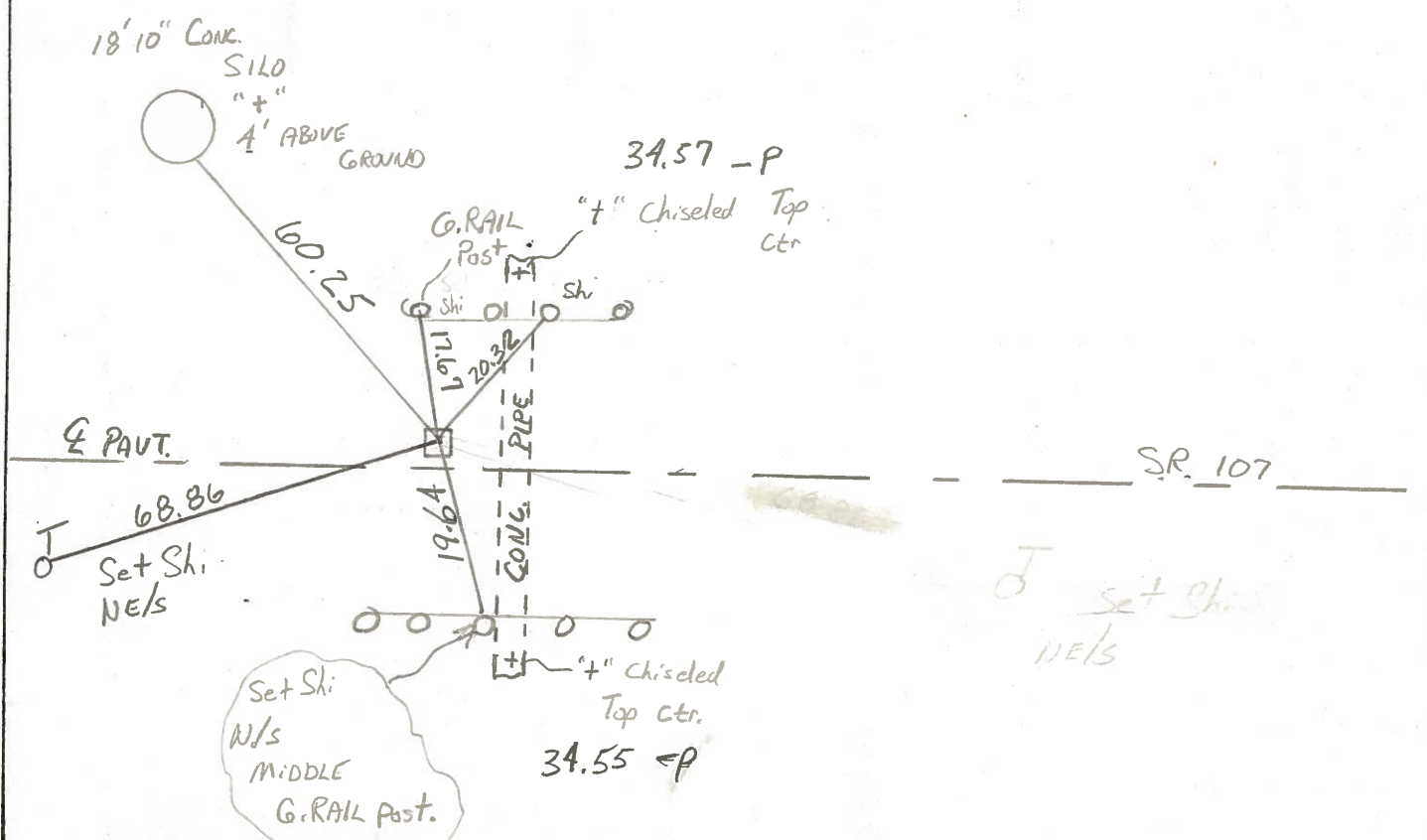
7.1 TO LF EDGE PAVEMENT

S.L.M. 241 +95



PI Sta 241+90.0  
 Fd: SMALL RR Spk @ SURFACE  
 Mon Box Suspected Below

RAISED As of  
 5-22-85 C.L.



PERSONNEL TITLE PERSONNEL TITLE

Red Beach,  
Newcomb  
Knappe

COUNTY Wms

DATE Apr. 1972

S. R. 107

WEATHER

SEC. Superior Twp.

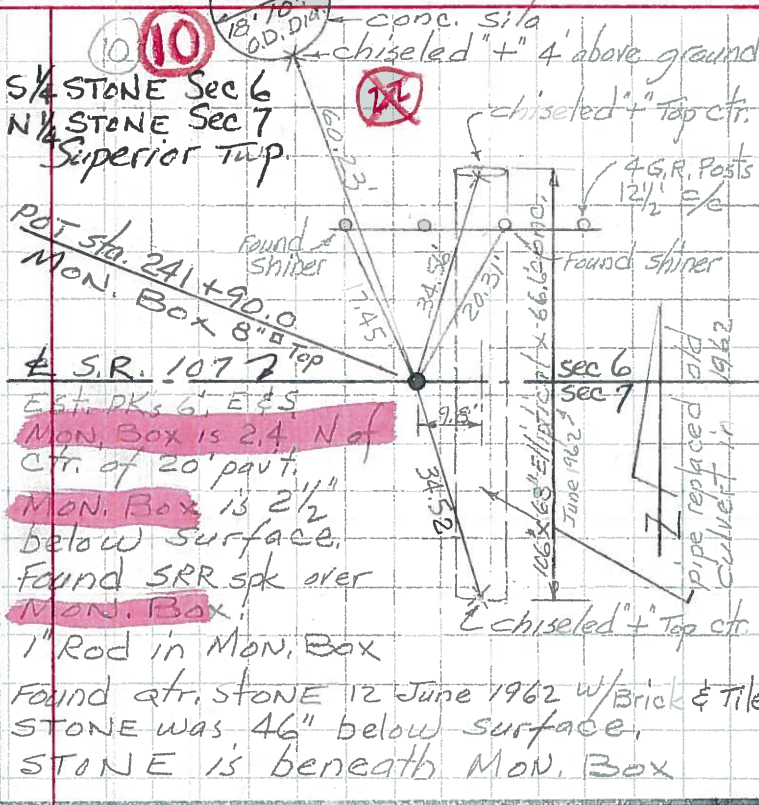
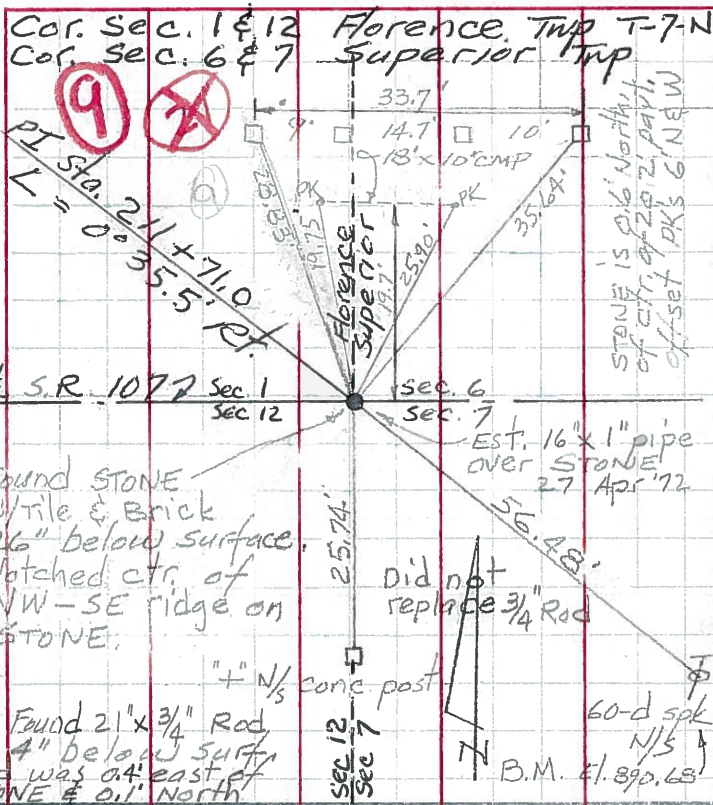
TEMP.

DESCRIPTION

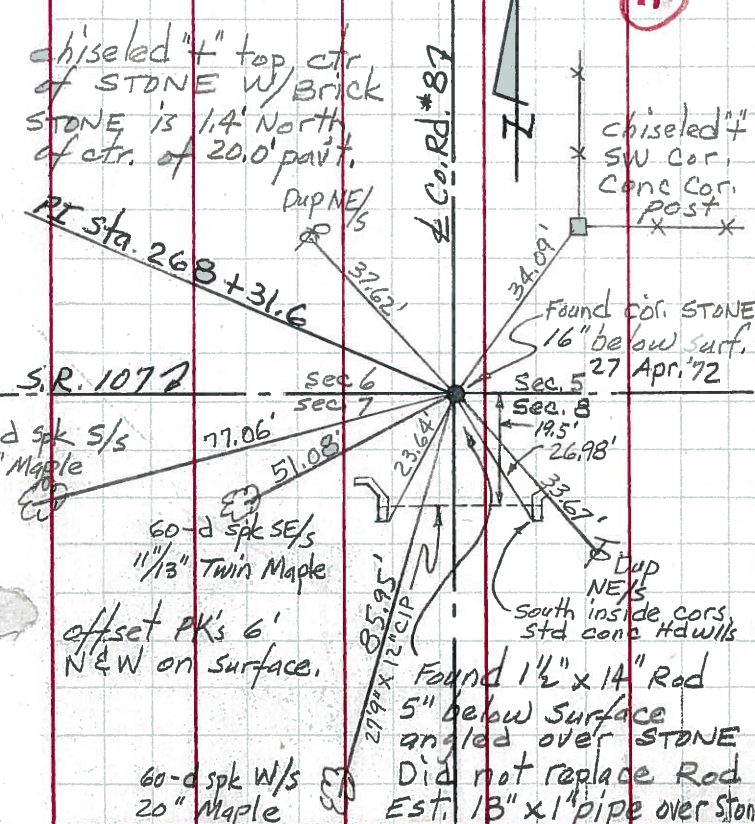
CONTROL POINTS

JOB NO.

LEFT CENTER LINE RIGHT



Car. Sec. 5, 6, 7 & 8 Superior Twp.  
Drake Corner



S. qtr. STONE Sec. 5 Superior Twp T-7-N  
N. qtr. STONE Sec. 8, Superior Twp T-7-N  
24 Apr. 1972

