

O.D.O.T. DISTRICT 2 SURVEY OFFICE (USE ONLY)

PERSONNEL

REFERENCE NO. 11

SHEET 12 OF 16

NOTES RHOADES

DATE 9/28/18

ROUTE SR 107

H.C. O'DONNELL

WEATHER CLEAR

COUNTY WILLIAMS

R.C. RHOADES

TEMP. 60°

TOWNSHIP SUPERIOR

SECTION 5

DWG BY NIESE PID 105474

T 7 N R 2 E

TYPE MONUMENT P.K./WASHER

ON SURFACE - ~~BELOW~~ ON

OFFSET \odot PAVEMENT 1.0' LT : ~~RT~~

- TO - EDGE PAVEMENT ON \odot CR 8

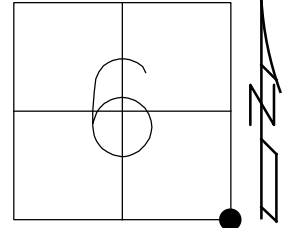
STATION: 268+33

HORZ. DATUM: -

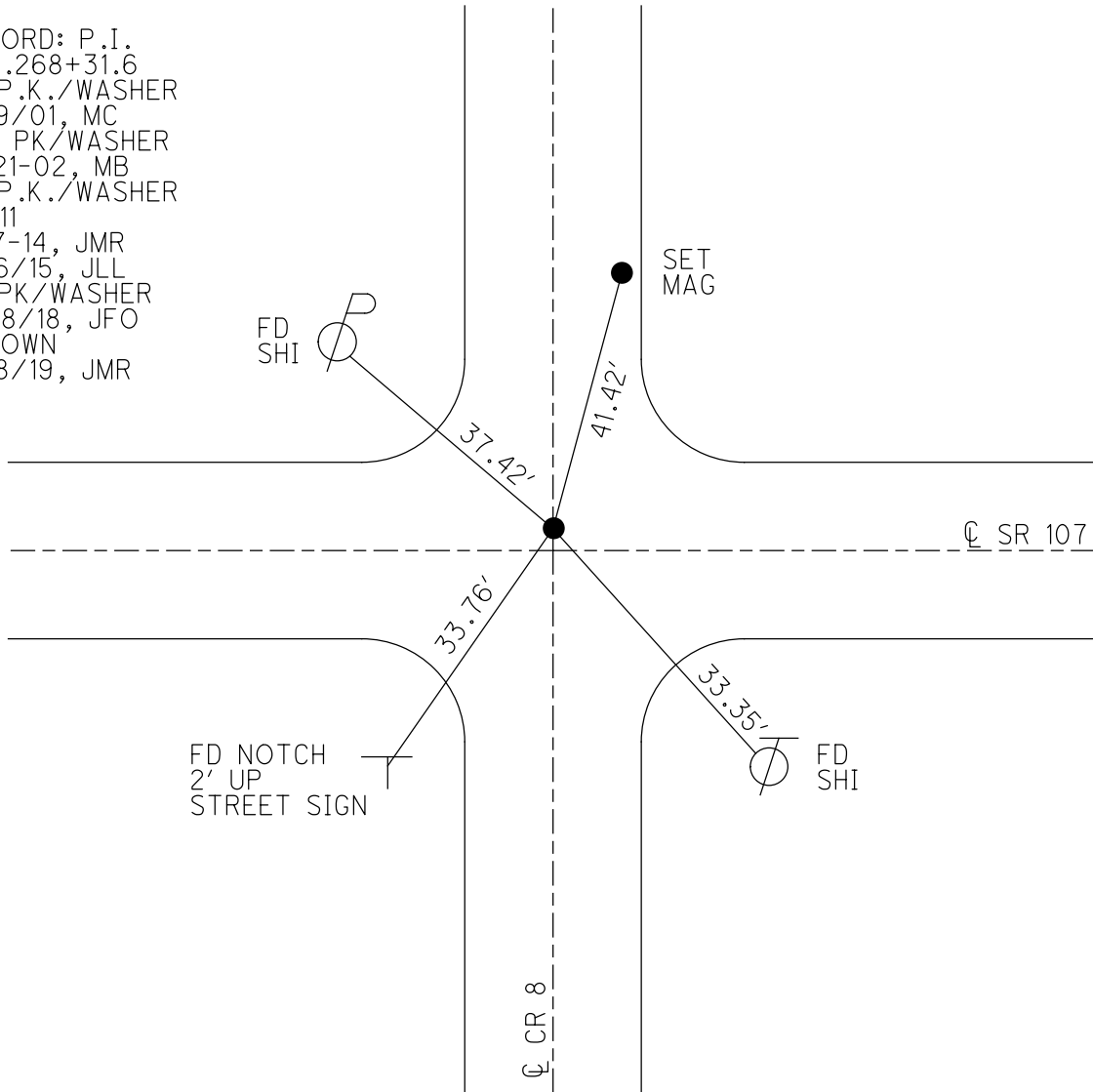
GEOID: -

GRID: NORTHING: 706745.850

EASTING: 1374618.341



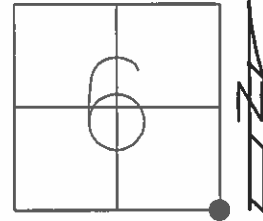
RECORD: P.I.
 STA. 268+31.6
 FD P.K./WASHER
 6/19/01, MC
 SET PK/WASHER
 10-21-02, MB
 FD P.K./WASHER
 REF11
 6-17-14, JMR
 1/26/15, JLL
 FD PK/WASHER
 9/28/18, JFO
 1" DOWN
 9/18/19, JMR



O.D.O.T. DISTRICT 2 SURVEY OFFICE (USE ONLY)

PERSONNEL _____ REFERENCE NO. 11 SHEET 12 OF 18
 NOTES MEYER DATE 7-02-14 ROUTE SR 107
 H.C. WESTFALL WEATHER CLEAR COUNTY WILLIAMS
 R.C. THOMAS TEMP. 75° TOWNSHIP SUPERIOR
RHOADES SECTION 5
 T 7 N R 2 E

TYPE MONUMENT PK/WASHER
 ON SURFACE - ~~BELOW~~ ON
 LEFT - ☉ PAV'T - ~~RIGHT~~ 1.0', ON ☉ CR 8
TO EDGE PAVEMENT
 S.L.M. 268+33



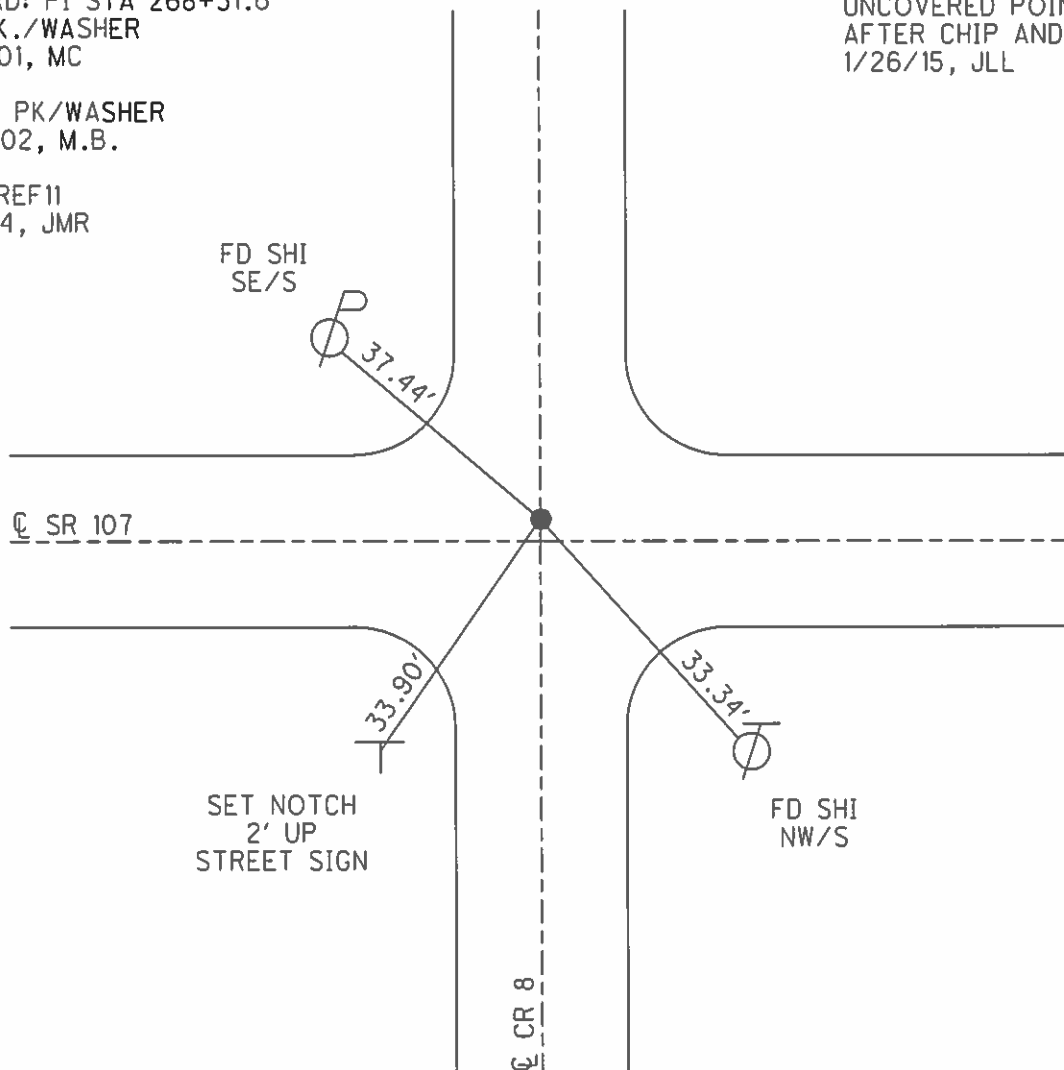
Grid: Northing: 706745.850 Easting: 1374618.341

RECORD: PI STA 268+31.6
 FD P.K./WASHER
 6/19/01, MC

UNCOVERED POINT
 AFTER CHIP AND SEAL
 1/26/15, JLL

RESET PK/WASHER
 10-21-02, M.B.

GPS, REF11
 6-17-14, JMR



O.D.O.T. DISTRICT 2 SURVEY OFFICE

PERSONNEL

REFERENCE NO. 11

SHEET 11 OF 16

NOTES MOSE

H.C. MOSE

R.C. CANTERBURY

DATE 6-19-01

WEATHER CLEAR

TEMP. +95°

ROUTE S.R. # 107

COUNTY WILLIAMS

TOWNSHIP SUPERIOR

SECTION 5

T 7 N R 2 E

TYPE MONUMENT P.K. / WASHER

ON SURFACE - ~~BELOW~~ SURFACE

LEFT - ~~☉~~ PAV'T. - ~~RIGHT~~ 1.0' LT.

TO EDGE PAVEMENT ON ☉ C.R. #8

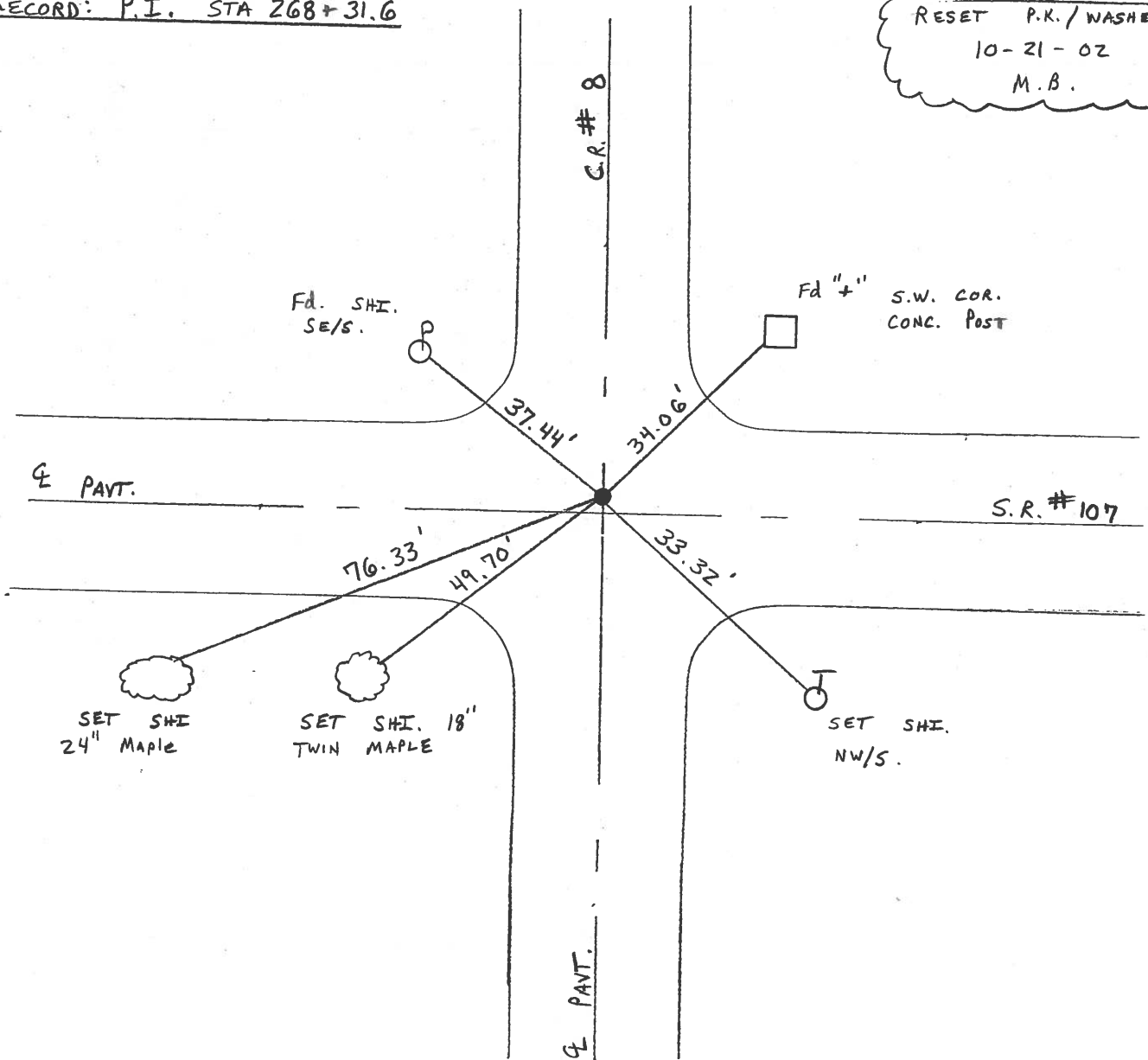
S.L.M. 268+33

6	5
7	8



RECORD: P.I. STA 268+31.6

RESET P.K. / WASHER
 10-21-02
 M.B.



O.D.O.T. DISTRICT 2 SURVEY OFFICE

PERSONNEL

REFERENCE NO. 11

SHEET 11 OF 18

NOTES LOEHRKE

H.C. CURTIS

R.C. ROMETO

DATE 5-2

WEATHER CLEAR

TEMP. +70

ROUTE S.R. 107

COUNTY Williams

TOWNSHIP SUPERIOR

SECTION 5

T. 2 N. R. 2 E.

TYPE MONUMENT Sm. R.R. Spike . SET PK/WASHER

ON SURFACE - BELOW Yes

8-11-92 AC

LEFT-☐ PAV'T. - RIGHT 10'

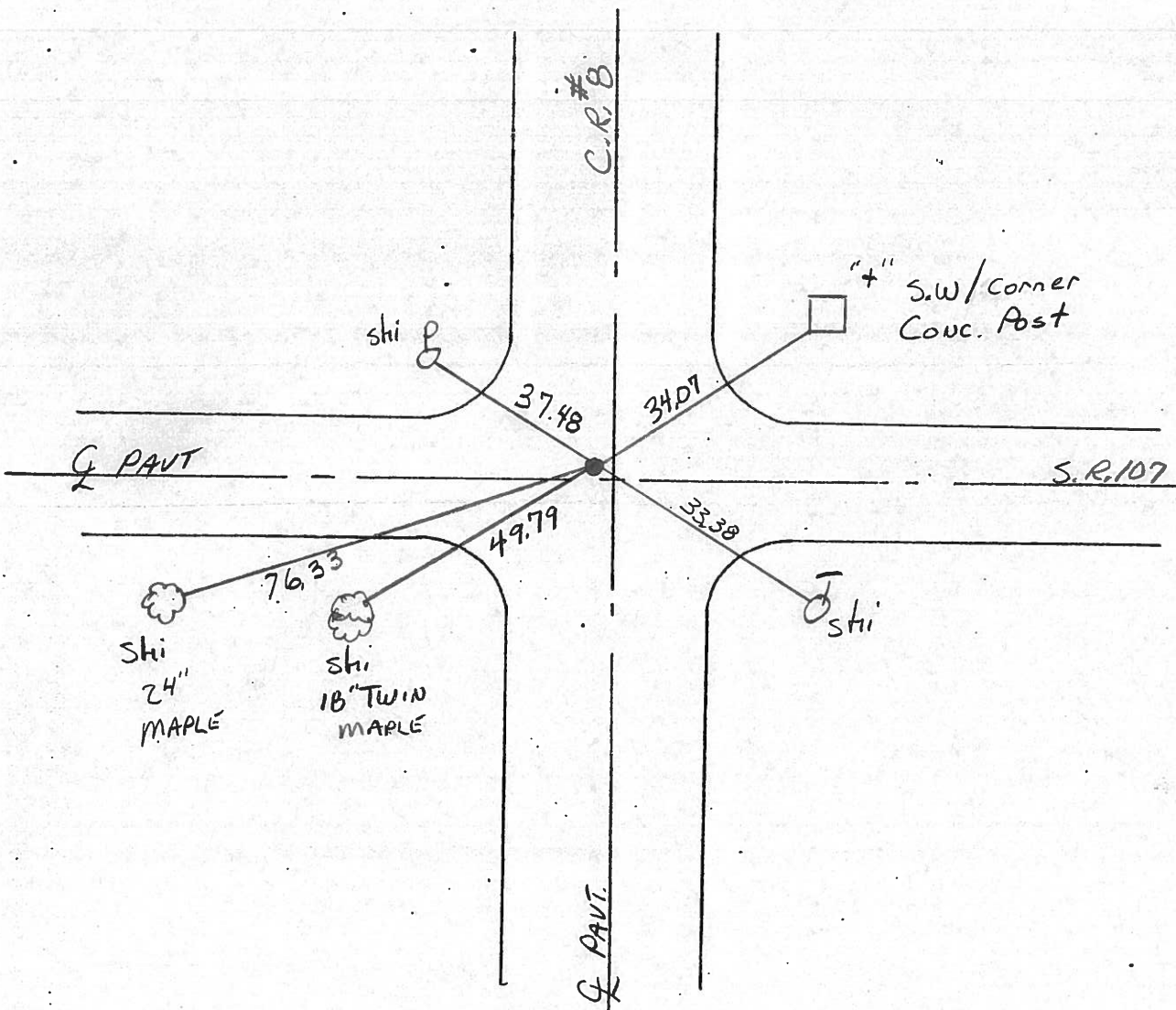
TO EDGE PAVEMENT

S.L.M. 268 +36

.6	5
7	8



RECORD P.I.
Sta 268+31.6



O.D.O.T. DISTRICT 2 SURVEY OFFICE

PERSONNEL

REFERENCE NO. 11

SHEET 12 OF

NOTES LOEHRKE

H.C. BARNHISEL

R.C. Hoffman

DATE 3-29-85

WEATHER pt Cloudy

TEMP. +55

ROUTE SR 107

COUNTY WILLIAMS

TOWNSHIP SUPERIOR

SECTION 5

T 7 N R 3 W

TYPE MONUMENT 1" PIPE

~~ON SURFACE~~ - BELOW 1 1/2" Below

LEFT - & PAV'T. RIGHT 1.5' Left

TO EDGE PAVEMENT O.B.W. & C.R.#8

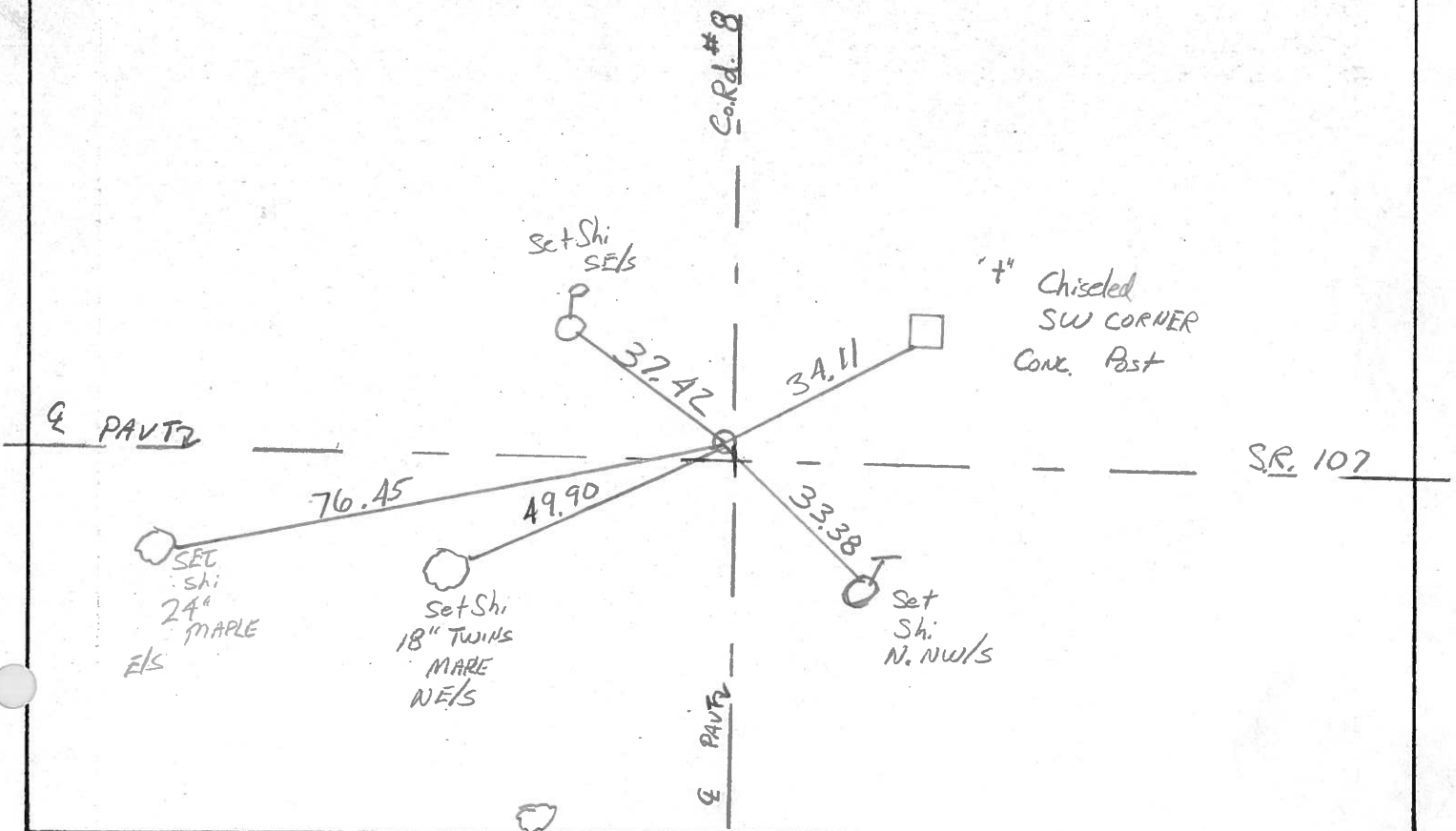
S.L.M. 268+37

6	5
7	8



PI Sta 268+31.6

Set Sm. R.R. Spk.
5-22-85 C.L.



PERSONNEL **Red Beach,** TITLE _____
Newcomb TITLE _____
Knape TITLE _____

COUNTY Wms DATE Apr. 1972
 S. R. 107 WEATHER _____
 SEC. Superior Twp. TEMP. _____

DESCRIPTION _____ CONTROL POINTS _____ JOB NO. _____

