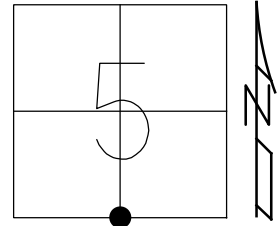


O.D.O.T. DISTRICT 2 SURVEY OFFICE (USE ONLY)

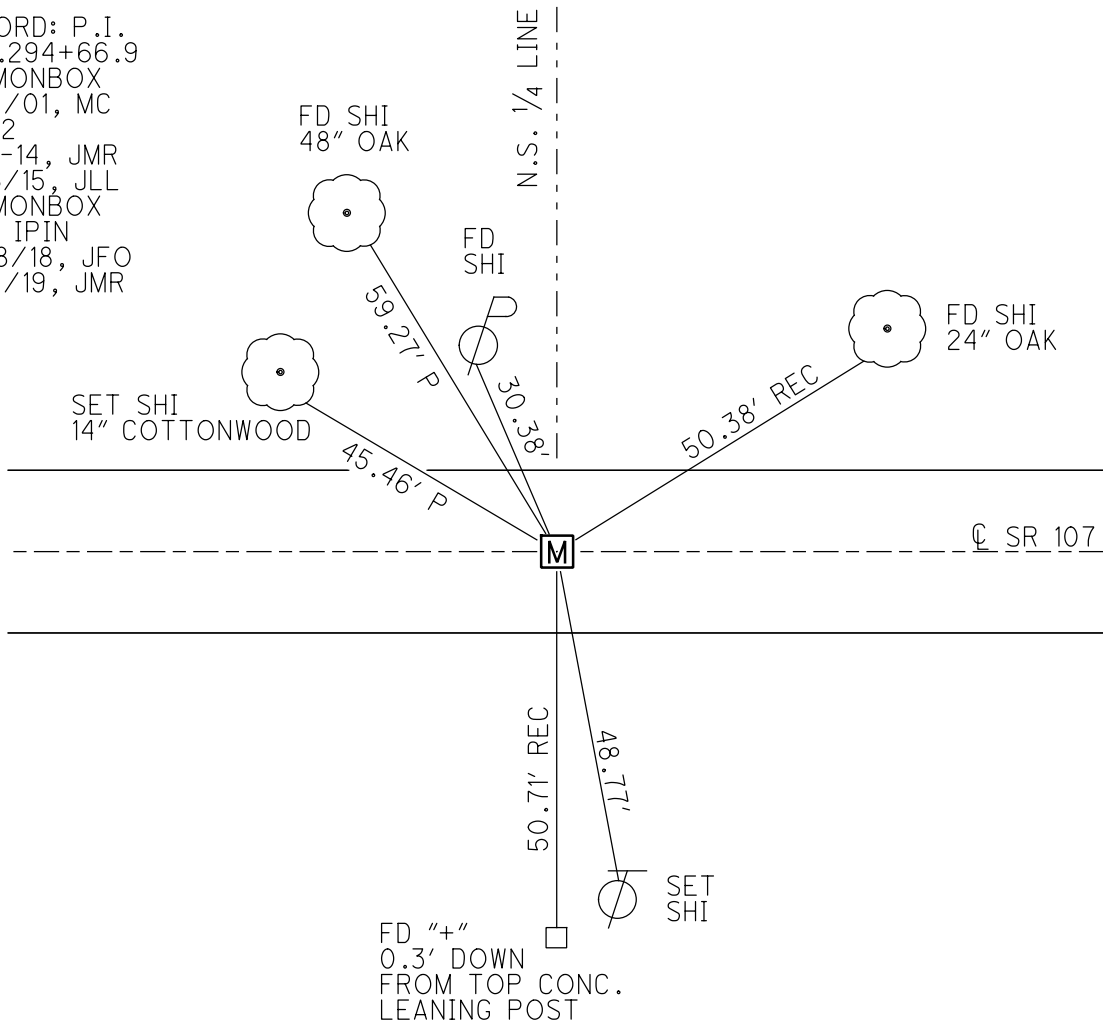
PERSONNEL _____ REFERENCE NO. 12 SHEET 13 OF 16
 NOTES RHOADES DATE 9/28/18 ROUTE SR 107
 H.C. O'DONNELL WEATHER CLEAR COUNTY WILLIAMS
 R.C. RHOADES TEMP. 59° TOWNSHIP SUPERIOR
 DWG BY NIESE PID 105474 SECTION 5
 T 7 N R 2 E

TYPE MONUMENT MONBOX W/ 1" IPIN
 ON SURFACE - ~~BELOW~~ ON
 OFFSET Q PAVEMENT ON LT : RT
9.2' TO LT EDGE PAVEMENT
 STATION: 294+70

HORZ.DATUM: NAD83(2011) GEOID: 2012A
 GRID: NORTHING: 706700.627 EASTING: 1377252.550



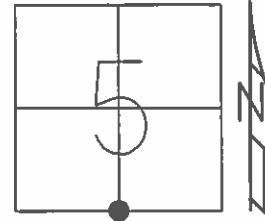
RECORD: P.I.
 STA.294+66.9
 FD MONBOX
 6/19/01, MC
 REF12
 6-17-14, JMR
 1/26/15, JLL
 FD MONBOX
 W/1" IPIN
 9/28/18, JFO
 9/18/19, JMR



O.D.O.T. DISTRICT 2 SURVEY OFFICE (USE ONLY)

PERSONNEL _____ REFERENCE NO. 12 SHEET 13 OF 18
 NOTES MEYER DATE 7-02-14 ROUTE SR 107
 H.C. WESTFALL WEATHER CLEAR COUNTY WILLIAMS
 R.C. THOMAS TEMP. 75° TOWNSHIP SUPERIOR
 _____ SECTION 5
 _____ T 7 N R 2 E

TYPE MONUMENT MON BOX
 ON SURFACE - ~~BELOW~~ ON _____
~~LEFT~~ - ☉ PAV'T - ~~RIGHT~~ ON _____
9.2' TO LT EDGE PAVEMENT
 S.L.M. 294+70

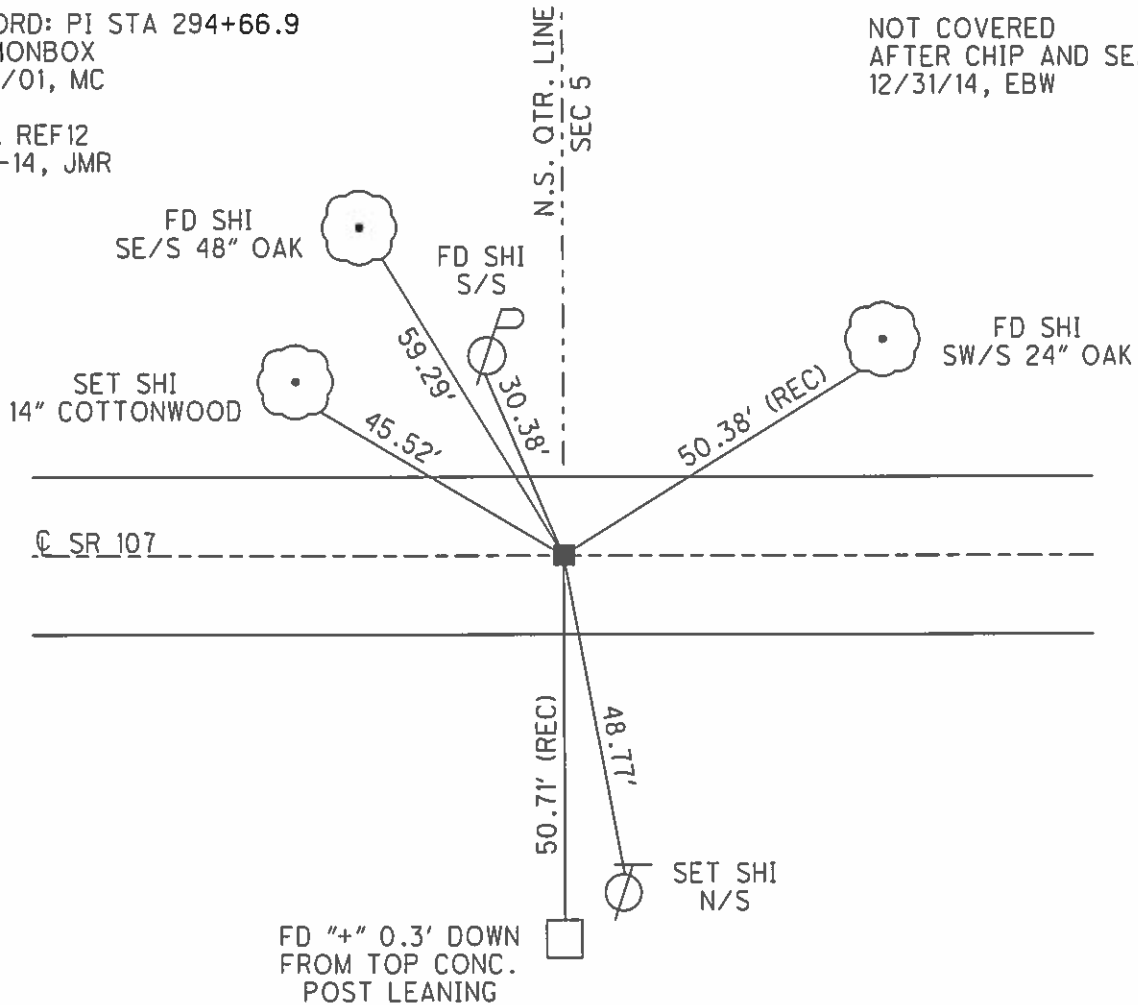


Grid: Northing: 706700.571 Easting: 1377252.582

RECORD: PI STA 294+66.9
 FD MONBOX
 6/19/01, MC

GPS, REF12
 6-17-14, JMR

NOT COVERED
 AFTER CHIP AND SEAL
 12/31/14, EBW



O.D.O.T. DISTRICT 2 SURVEY OFFICE

PERSONNEL

REFERENCE NO. 12

SHEET 12 OF 14

NOTES MOSE

H.C. MOSE

R.C. CANTERBURY

DATE 6-19-01

WEATHER CLEAR

TEMP. +95°

ROUTE S.R. #107

COUNTY WILLIAMS

TOWNSHIP SUPERIOR

SECTION 5

T 7 N R 2 E

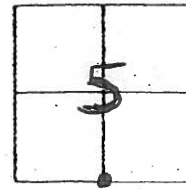
TYPE MONUMENT Mon Box

ON SURFACE - ~~BELOW~~ SURFACE

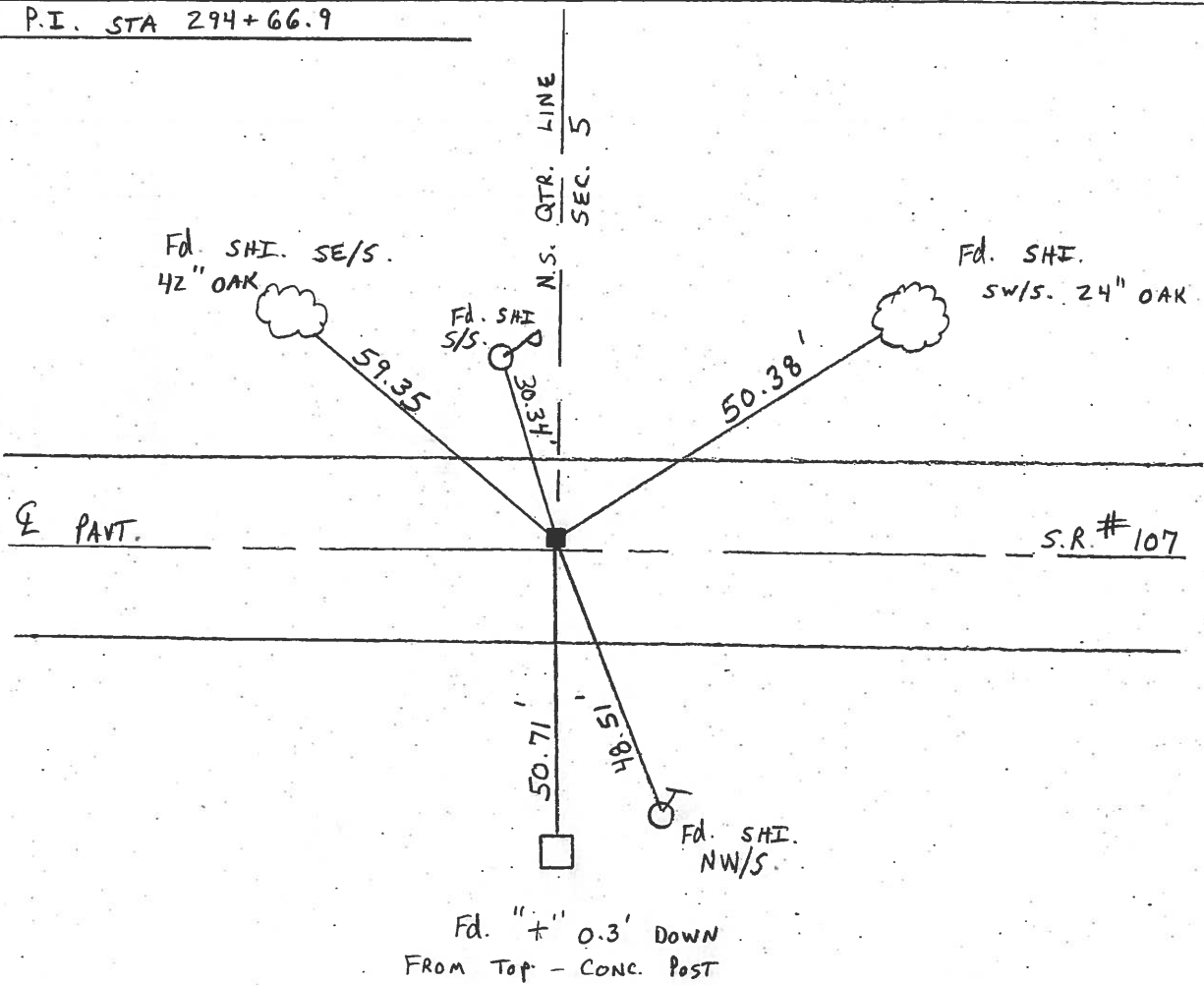
LEFT- & PAV'T. - ~~RIGHT~~ 0.3' LT &

9.2' TO LT. EDGE PAVEMENT

S.L.M. 294 + 70



RECORD: P.I. STA 294+66.9



O.D.O.T. DISTRICT 2 SURVEY OFFICE

PERSONNEL

REFERENCE NO. 12

SHEET 12 OF 18

NOTES LOEHRKE

H.C. CURTIS

R.C. ROMERO

DATE 5-21-92

WEATHER CLEAR

TEMP. +70

ROUTE S.R. 107

COUNTY Williams

TOWNSHIP SUPERIOR

SECTION 5

T 7 N R 2 E

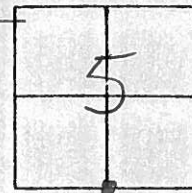
TYPE MONUMENT MON. BOX - PAINTED & VISIBLE

ON SURFACE - BELOW Yes 8-11-92 UC

LEFT - C PAV'T. - RIGHT 0.4'

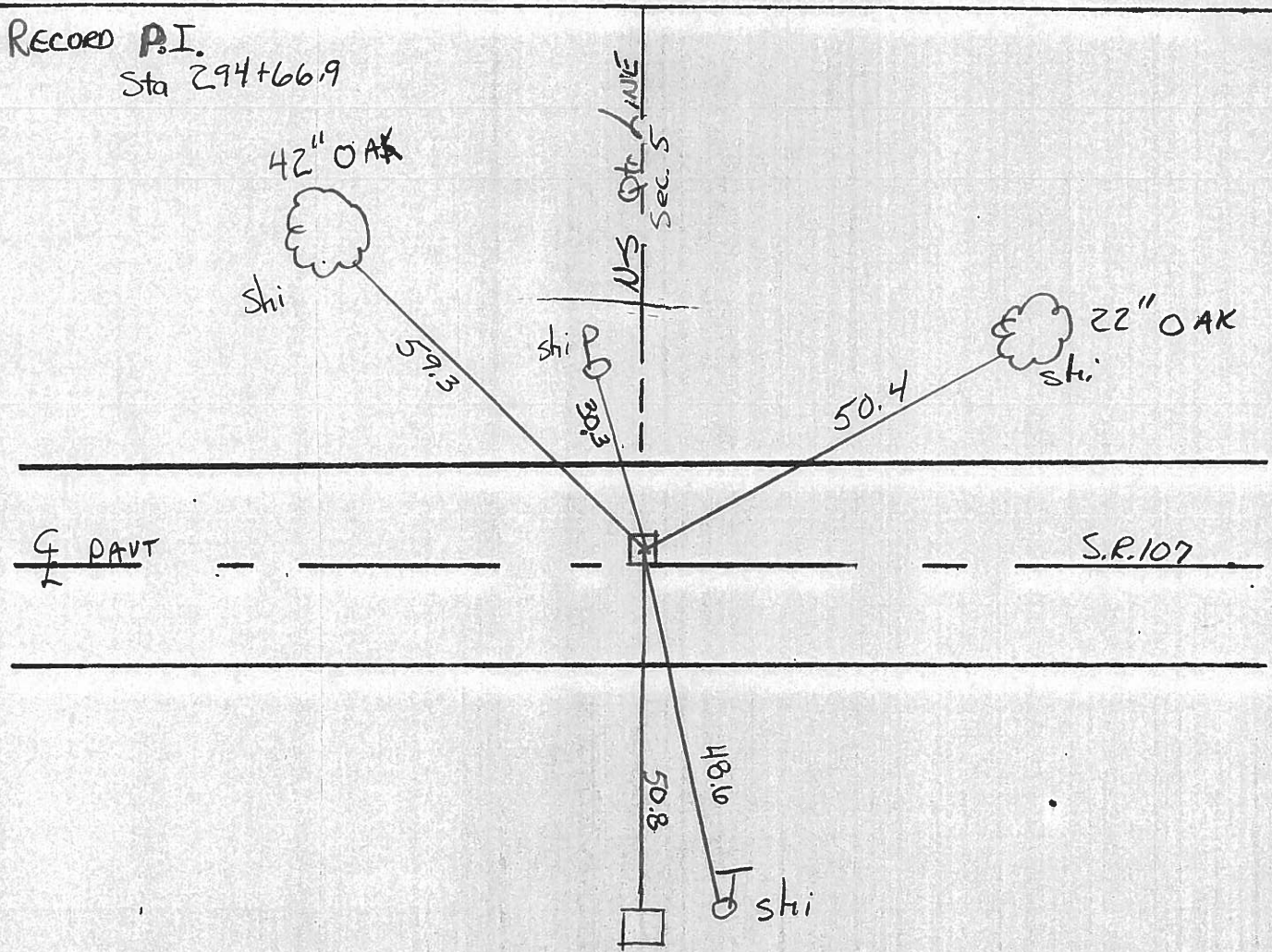
10.3 TO Lt EDGE PAVEMENT

S.L.M. 294+71



RECORDED P.I.

Sta 294+66.9



"+" 0.3' Down
from top - CONC. POST

O.D.O.T. DISTRICT 2 SURVEY OFFICE

PERSONNEL

REFERENCE NO. 12 SHEET 13 OF

NOTES LOEHRKE

H.C. BARNHISEL

R.C. Hoffman

DATE 4-3-85

WEATHER WINDY, clear

TEMP. +50

ROUTE SR. 107

COUNTY WILLIAMS

TOWNSHIP SUPERIOR

SECTION 5

T 7 N R 2 E

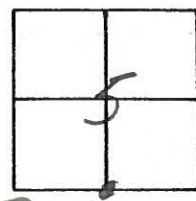
TYPE MONUMENT Mon Box (1962)

ON SURFACE - BELOW 3" BELOW

LEFT- & PAV'T - RIGHT 0.5 LP & SR107

9.7 TO LP EDGE PAVEMENT

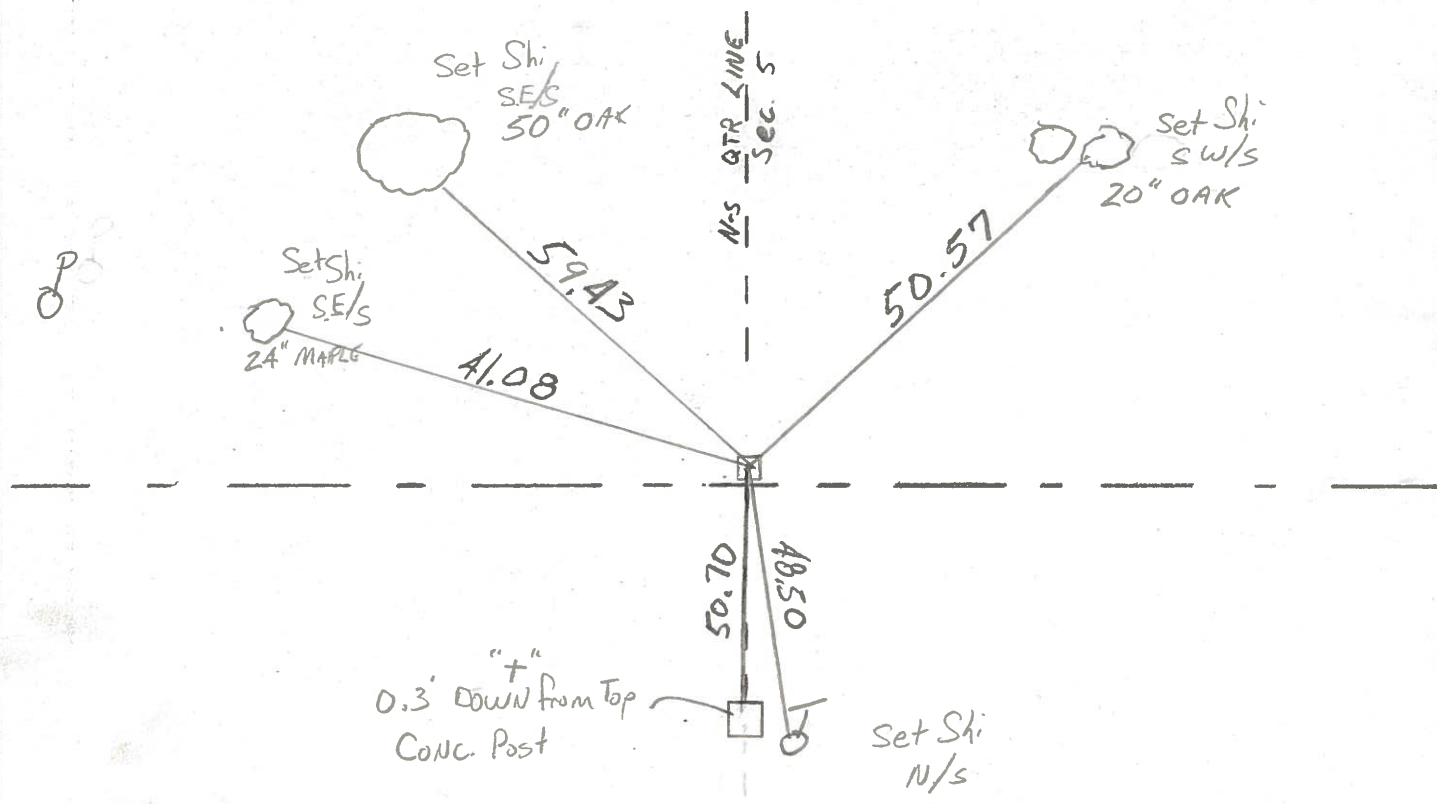
S.L.M. 294+72



Ed PK @ SURFACE

Box RAISED AS OF
5-23-85 C.L.

PI Sta. 294+66.9



PERSONNEL TITLE PERSONNEL TITLE

Red Beach,
Newcomb
Knappe

COUNTY Wms

DATE Apr. 1972

S. R. 107

WEATHER _____

SEC. Superior Twp.

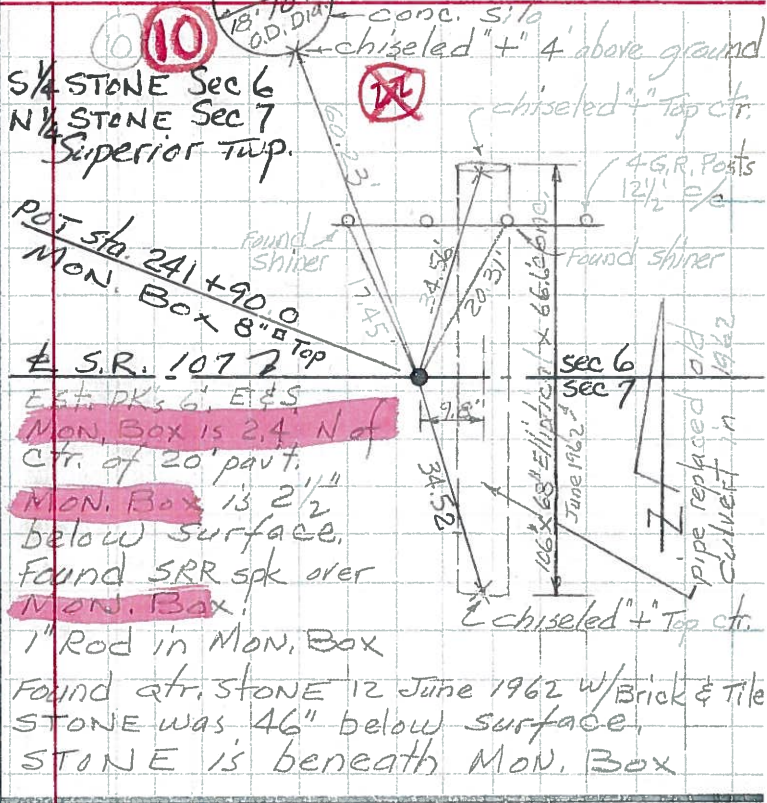
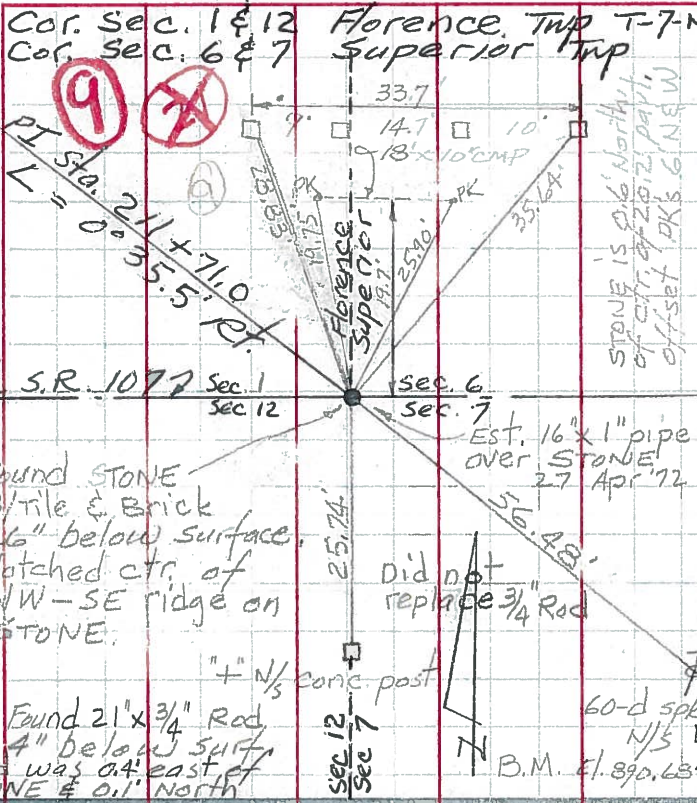
TEMP. _____

DESCRIPTION

CONTROL POINTS

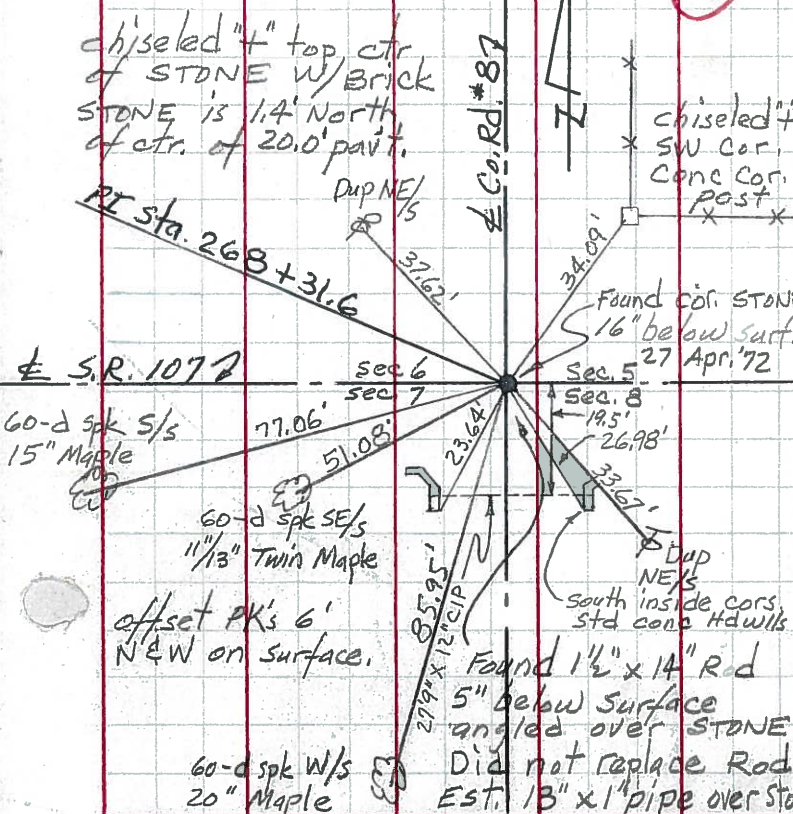
JOB NO. _____

LEFT CENTER LINE RIGHT



Car. Sec. 5, 6, 7 & 8 Superior Twp.
Drake Corner

11



S/4 tr. STONE Sec. 5 Superior Twp T-7-N
N/4 tr. STONE Sec. 8, Superior Twp T-7-N
24 Apr. 1972

12

