

O.D.O.T. DISTRICT 2 SURVEY OFFICE (USE ONLY)

PERSONNEL

REFERENCE NO. 15

SHEET 16 OF 16

NOTES RHOADES

DATE 9/28/18

ROUTE SR 107

H.C. O'DONNELL

WEATHER CLEAR

COUNTY WILLIAMS

R.C. RHOADES

TEMP. 60°

TOWNSHIP SUPERIOR

DWG BY NIESE

PID 105474

SECTION 3

T 7 N R 2 E

TYPE MONUMENT MAG/WASHER

ON SURFACE - ~~BELOW~~ ON

OFFSET Q PAVEMENT 2.8' ~~LT~~ : RT

- TO - EDGE PAVEMENT 1.6' W Q CR 10

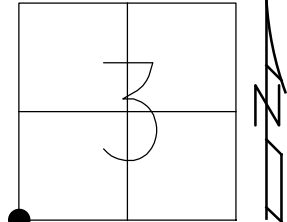
STATION: 374+23.67

HORZ.DATUM: -

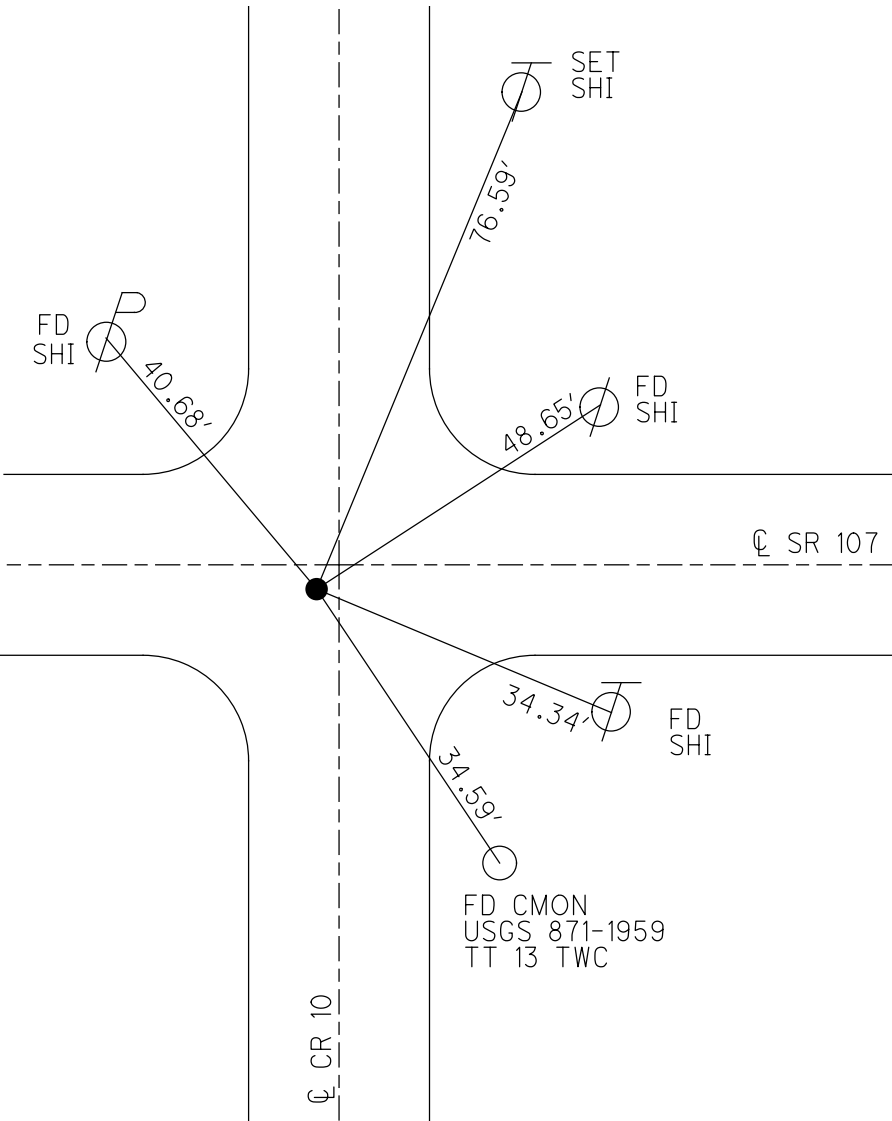
GEOID: -

GRID: NORTHING: 706508.211

EASTING: 1385204.676



RECORD: P.I.  
 STA. 374+22.08  
 FD P.K./WASHER  
 6/19/01, MC  
 SET P.K./WASHER  
 10-21-02, MB  
 FD P.K.NAIL  
 REF15  
 6-17-14, JMR  
 FD R.R.SPIKE  
 ATOP IPIPE  
 6" DOWN  
 FD IPIPE  
 6" DOWN  
 12/29/14, DCH  
 1/26/15, JLL  
 SET MAG/WASHER  
 8/7/17, JLL  
 FD MAG/WASHER  
 9/28/18, JFO  
 9/18/19, JMR



O.D.O.T. DISTRICT 2 SURVEY OFFICE (USE ONLY)

PERSONNEL	REFERENCE NO.	15	SHEET	2	OF	25
NOTES	HOMAN	DATE	12/29/14	ROUTE	SR 107	
H.C.	HOMAN	WEATHER	CLEAR	COUNTY	WILLIAMS	
R.C.	WESTFALL	TEMP.	35°	TOWNSHIP	SUPERIOR	
				SECTION	3	
				T	7	N
				R	2	E

TYPE MONUMENT IPIPE

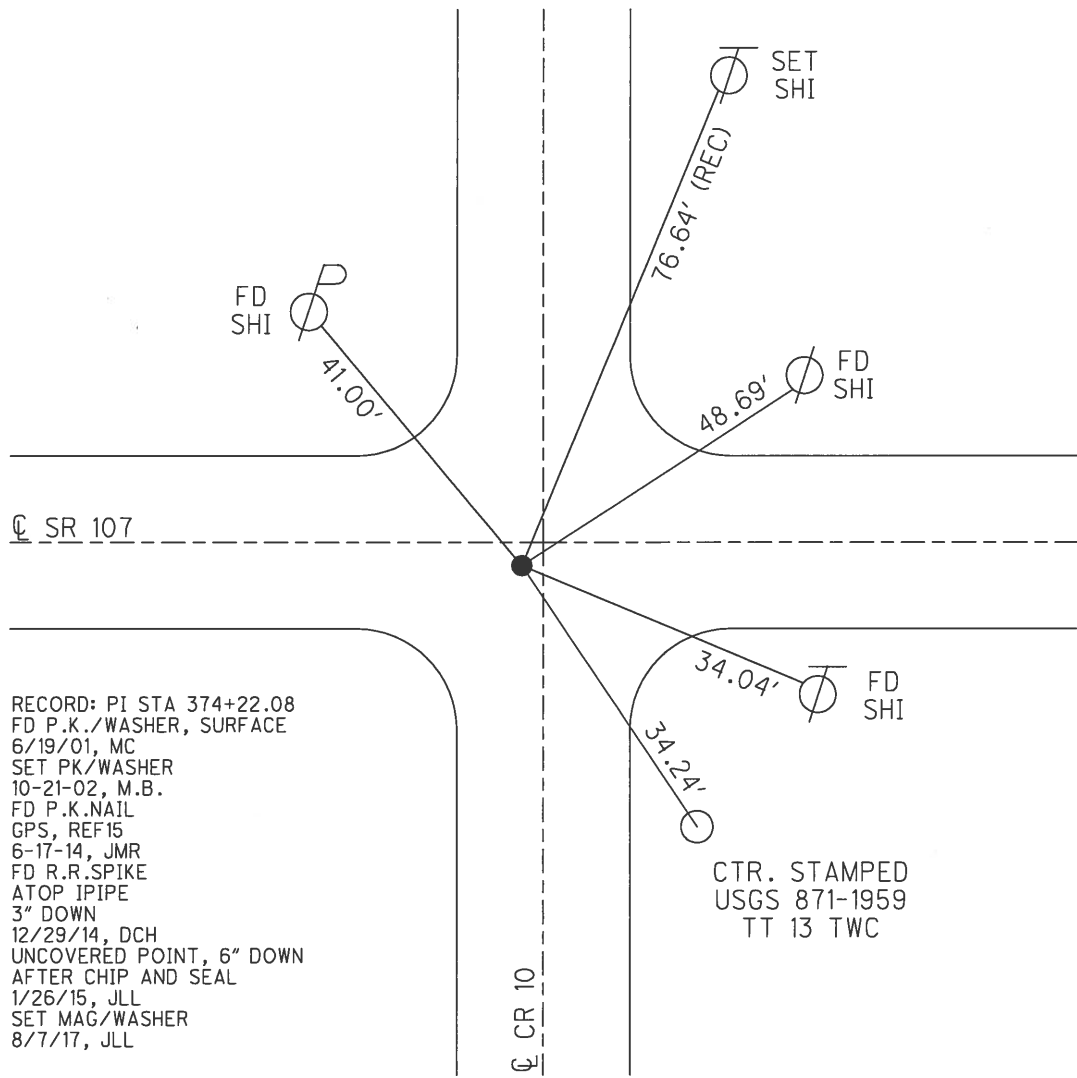
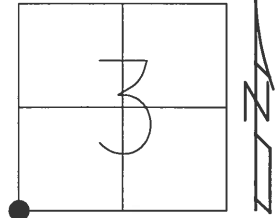
~~ON SURFACE~~ - BELOW 6"

~~LEFT~~ - Q PAV'T - RIGHT 2.8', 1.6' W Q CR 10

- TO - EDGE PAVEMENT

S.L.M. 374+23.67

Grid: Northing: 706508.211 Easting: 1385204.676



RECORD: PI STA 374+22.08  
 FD P.K./WASHER, SURFACE  
 6/19/01, MC  
 SET PK/WASHER  
 10-21-02, M.B.  
 FD P.K.NAIL  
 GPS, REF15  
 6-17-14, JMR  
 FD R.R.SPIKE  
 ATOP IPIPE  
 3" DOWN  
 12/29/14, DCH  
 UNCOVERED POINT, 6" DOWN  
 AFTER CHIP AND SEAL  
 1/26/15, JLL  
 SET MAG/WASHER  
 8/7/17, JLL

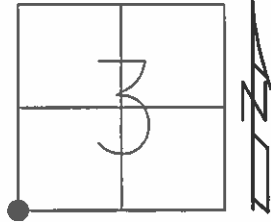
CTR. STAMPED  
 USGS 871-1959  
 TT 13 TWC

O.D.O.T. DISTRICT 2 SURVEY OFFICE (USE ONLY)

PERSONNEL \_\_\_\_\_ REFERENCE NO. 15 SHEET 16 OF 18

NOTES RHOADES DATE 6-17-14 ROUTE SR 107  
 H.C. RHOADES WEATHER FAIR, WINDY COUNTY WILLIAMS  
 R.C. MEYER TEMP. 85° TOWNSHIP SUPERIOR  
 \_\_\_\_\_ SECTION 3  
 \_\_\_\_\_ T 7 N R 2 E

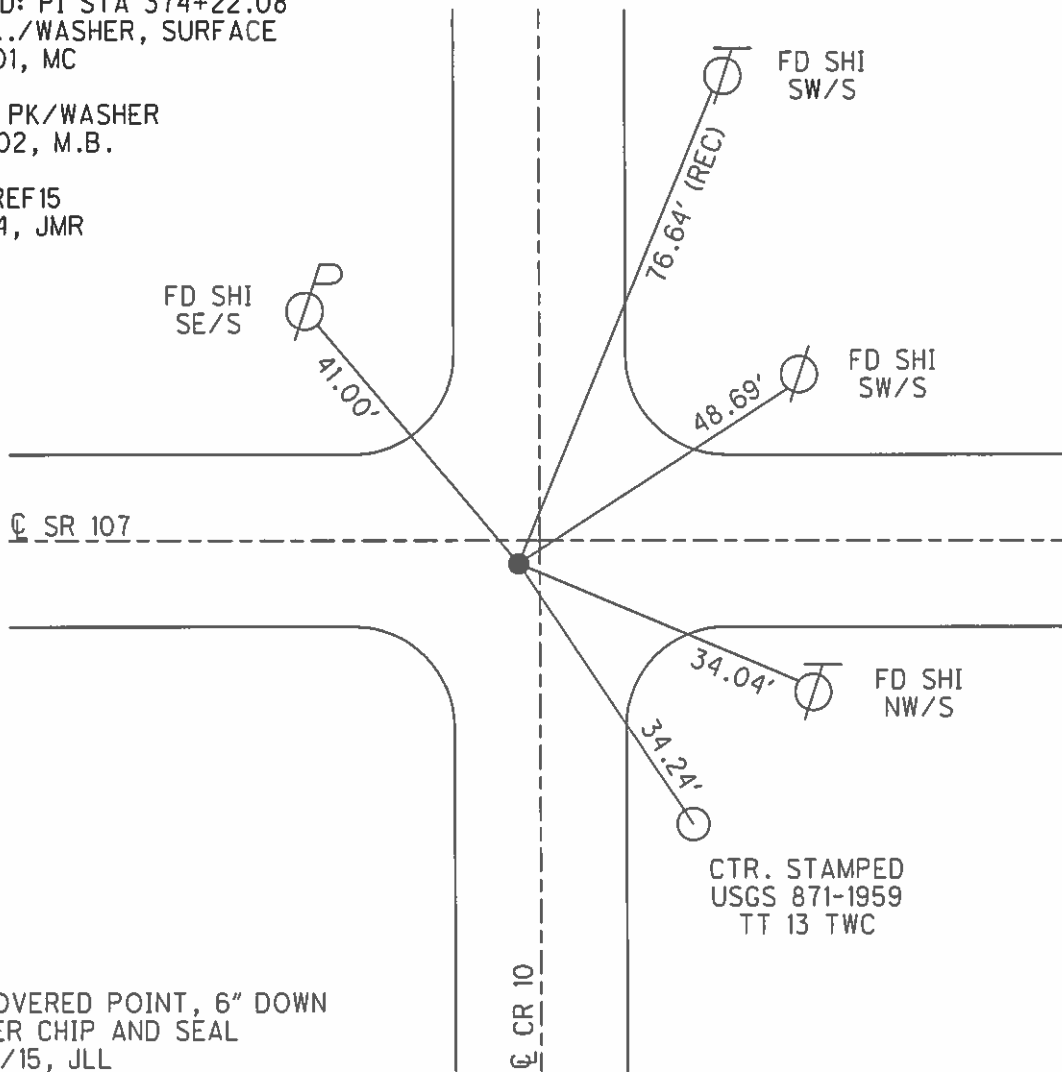
TYPE MONUMENT PK  
~~ON SURFACE~~ - BELOW 6"  
~~LEFT~~ - Q PAV'T - RIGHT 2.8', 1.6' W Q CR 10  
 \_\_\_\_\_ TO \_\_\_\_\_ EDGE PAVEMENT  
 S.L.M. 374+32  
 Grid: Northing: 706507.894 Easting: 1385204.884



RECORD: PI STA 374+22.08  
 FD P.K./WASHER, SURFACE  
 6/19/01, MC

RESET PK/WASHER  
 10-21-02, M.B.

GPS, REF15  
 6-17-14, JMR



CTR. STAMPED  
 USGS 871-1959  
 TT 13 TWC

UNCOVERED POINT, 6" DOWN  
 AFTER CHIP AND SEAL  
 1/26/15, JLL

# O.D.O.T. DISTRICT 2 SURVEY OFFICE

PERSONNEL

REFERENCE NO. 15

SHEET 15 OF 16

NOTES MOSE

H.C. MOSE

R.C. CANTERBURY

DATE 6-19-01

WEATHER CLEAR

TEMP. +95°

ROUTE S.R. #107

COUNTY WILLIAMS

TOWNSHIP SUPERIOR

SECTION 3

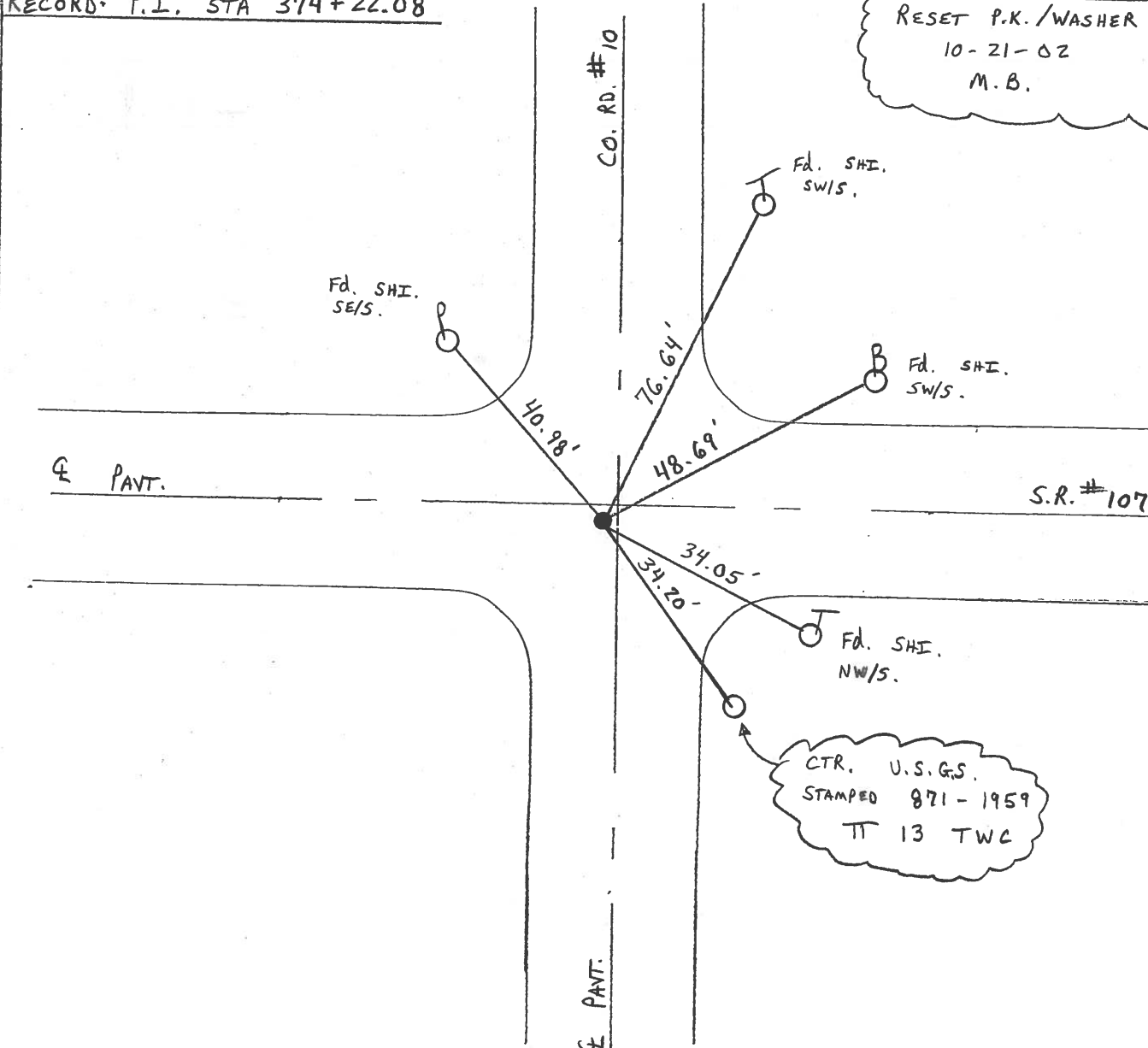
T 7 N R 2 E

TYPE MONUMENT P.K./WASHER  
 ON SURFACE - ~~BELOW~~ SURFACE  
~~LEFT~~ - PAV'T. - RIGHT 2.0' RT &  
TO - EDGE PAVEMENT 1.6' W. & C.R. #10  
 S.L.M. 374+32



RECORD: P.I. STA 374+22.08

RESET P.K./WASHER  
 10-21-02  
 M.B.



# O.D.O.T. DISTRICT 2 SURVEY OFFICE

PERSONNEL

REFERENCE NO. 15

SHEET 15 OF 18

NOTES LOEHRKE

H.C. CURTIS

DATE 5-21-92

ROUTE S.R. 107

R.C. ROMETO

WEATHER CLEAR

COUNTY Williams

TEMP. +75

TOWNSHIP SUPERIOR

SECTION 3

T 7 N R 2 E

TYPE MONUMENT Sm. R.R. Spike SET PK/WASHER

ON SURFACE - BELOW Yes 8-11-92 AC

LEFT - Q PAV'T. - RIGHT 1.7 S. & S.R. 107

TO EDGE PAVEMENT 1' W of Cor. Rd. #10

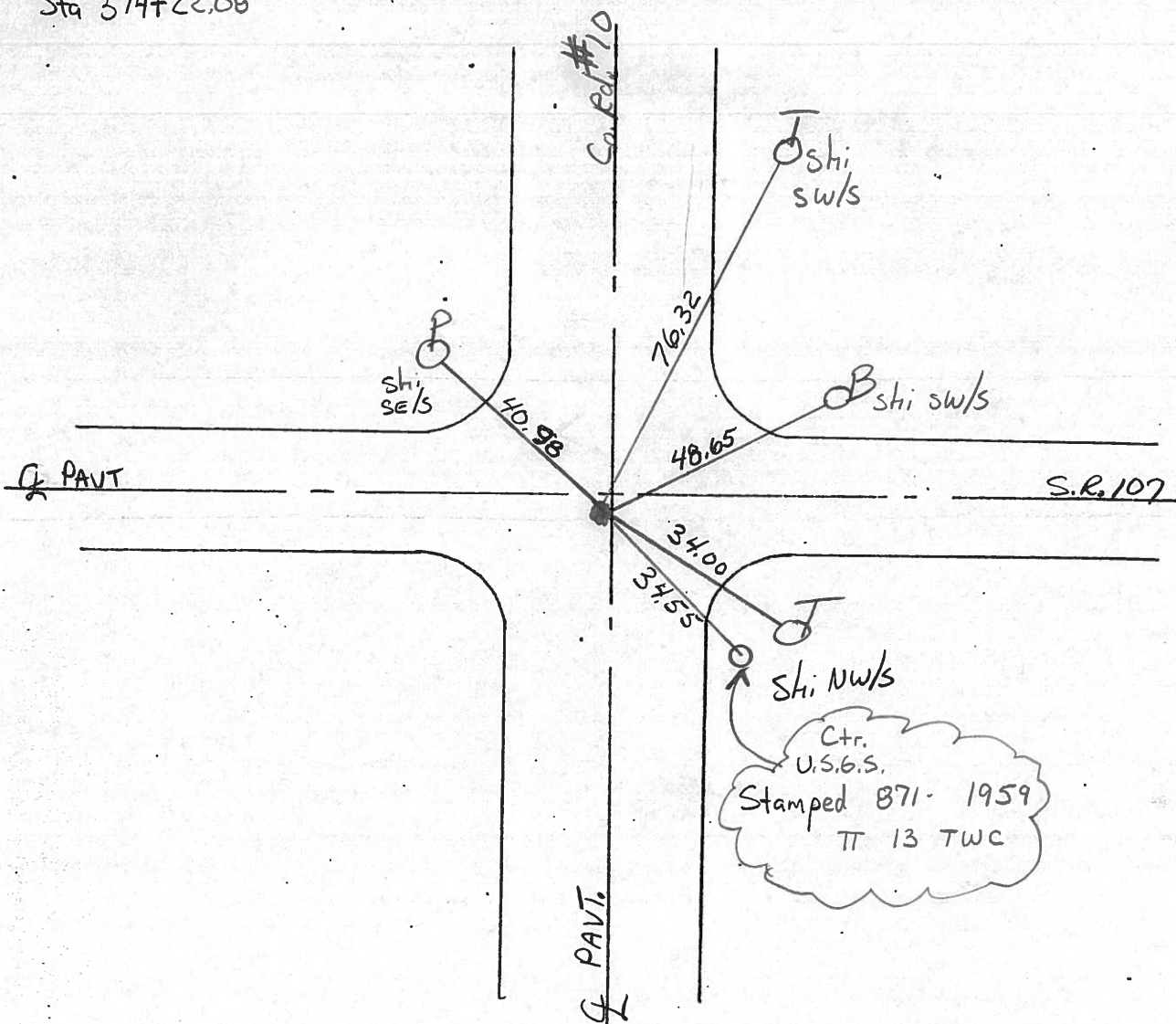
S.L.M. 374+27

4	3
9	10



Rec P.I.

Sta 374+22.08



# O.D.O.T. DISTRICT 2 SURVEY OFFICE

PERSONNEL

REFERENCE NO. 15

SHEET 16 OF       

NOTES LOEHRKE

H.C. BARDHISEL

R.C. Hoffman

DATE 4-3-85

WEATHER WINDY, Clear

TEMP. +50

ROUTE SR 107

COUNTY WILLIAMS

TOWNSHIP SUPERIOR

SECTION 3

T 7 N R 2 E

TYPE MONUMENT 1" PIPE

ON SURFACE - BELOW 1 1/2"

LEFT - ~~PAV'T.~~ - RIGHT 1.7 S. & 107

TO EDGE PAVEMENT

S.L.M. 374+27

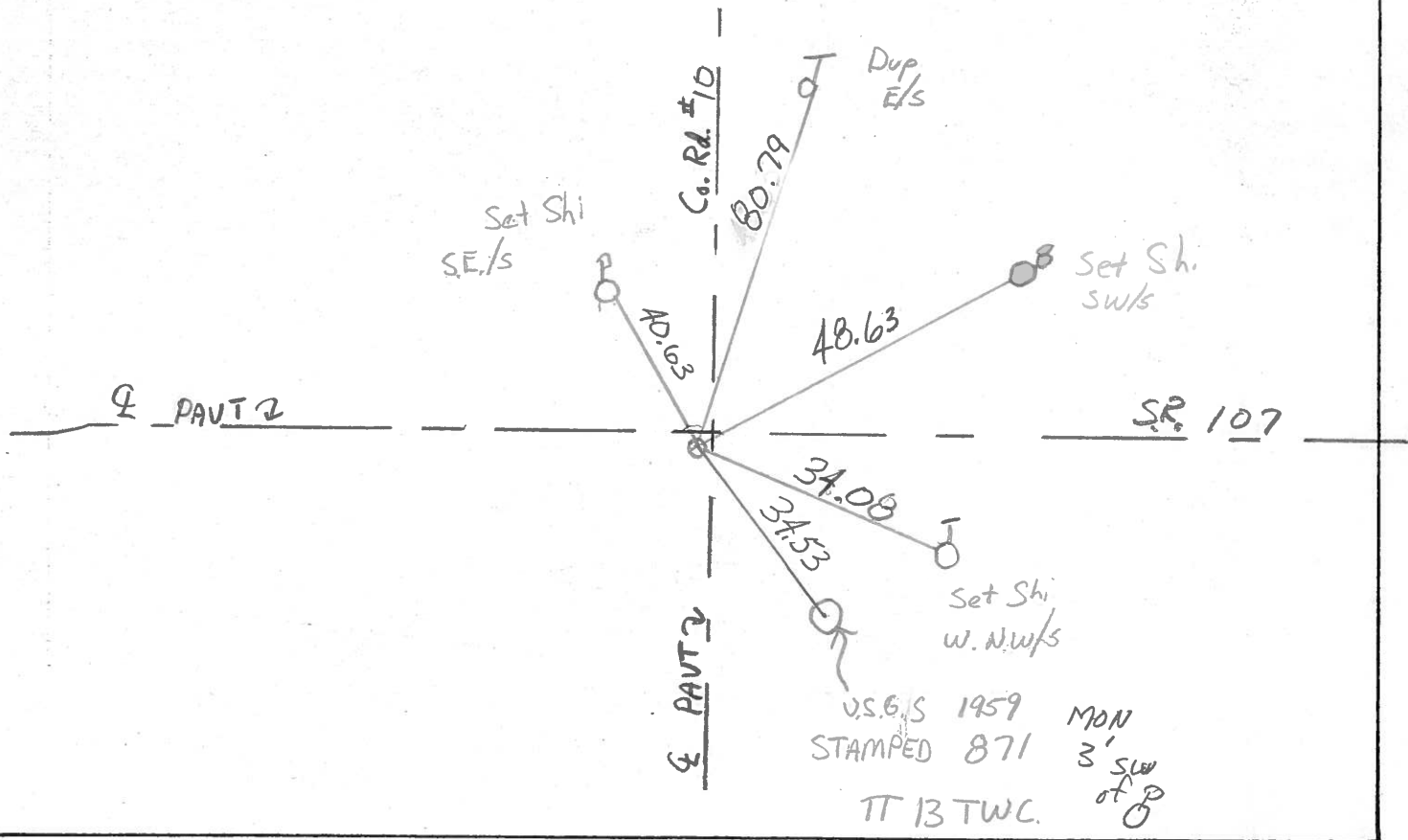
I.W. & PAVT North

4	3
9	10



PI, Sta 374+22.08

Set Sm. RR, Spk.  
5-23-85 C.L.





PERSONNEL TITLE PERSONNEL TITLE  
Red Beach / Newcomb / Knape

COUNTY Williams DATE Apr. 1972  
 S. R. 107 WEATHER \_\_\_\_\_  
 SEC. Superior Twp. TEMP. \_\_\_\_\_

DESCRIPTION CONTROL POINTS JOB NO.

LEFT CENTER LINE RIGHT

