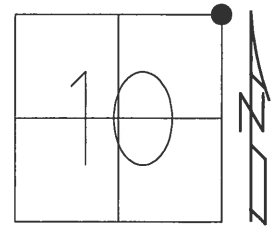


O.D.O.T. DISTRICT 2 SURVEY OFFICE (USE ONLY)

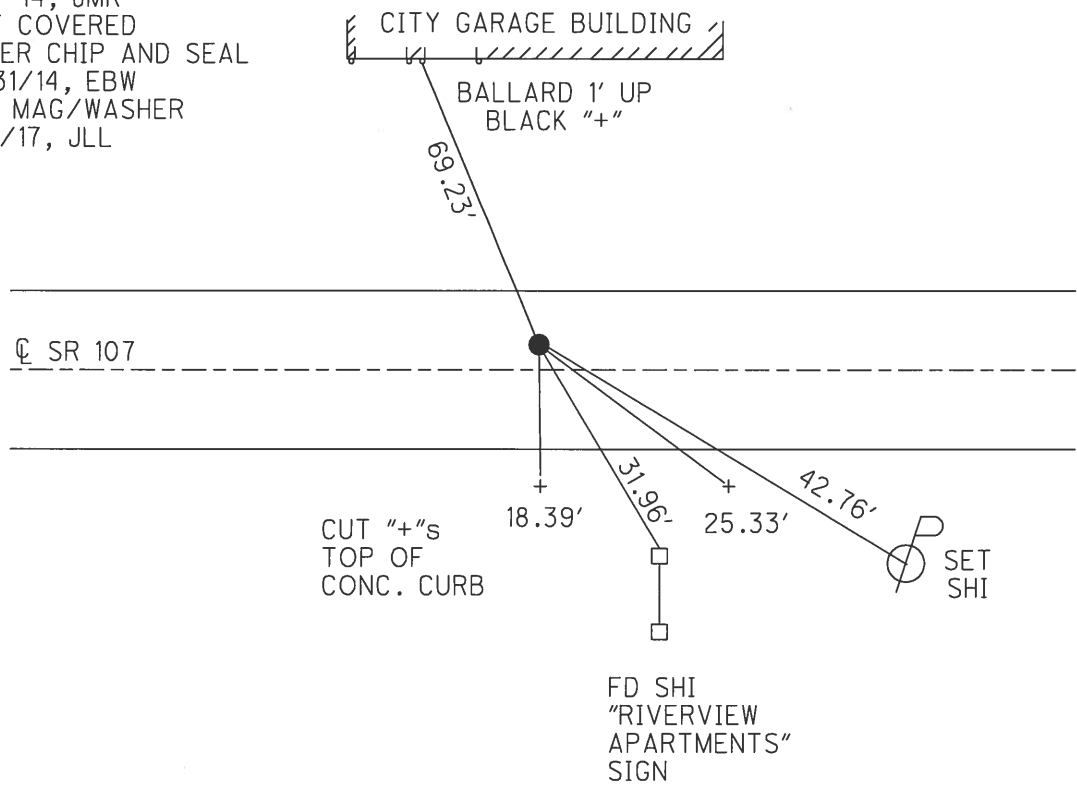
PERSONNEL \_\_\_\_\_ REFERENCE NO. 17 SHEET 4 OF 25  
 NOTES RHOADES DATE 6-17-14 ROUTE SR 107  
 H.C. RHOADES WEATHER FAIR COUNTY WILLIAMS  
 R.C. MEYER TEMP. 85° TOWNSHIP SUPERIOR  
 SECTION 10  
 T 7 N R 2 E

TYPE MONUMENT PK/WASHER  
 ON SURFACE - ~~BELOW~~ ON  
 LEFT - CL PAV'T - ~~RIGHT~~ 0.9'  
18.1' TO RT EDGE PAVEMENT  
 S.L.M. 426+76.93



Grid: Northing: 706433.244 Easting: 1390457.423

RECORD: Δ = 0° 10' RT  
 STA. 105+68.50, 1948 PLAN  
 SET MAG & WASHER  
 8-15-05, M.B.  
 FD P.K./WASHER  
 GPS, REF17  
 6-17-14, JMR  
 NOT COVERED  
 AFTER CHIP AND SEAL  
 12/31/14, EBW  
 SET MAG/WASHER  
 8/7/17, JLL



O.D.O.T. DISTRICT 2 SURVEY OFFICE

PERSONNEL

REFERENCE NO. 17

SHEET 1 OF 10

NOTES BARNHISEL

DATE 5/18/05

ROUTE S.R. #107

H.C. CANTERBURY

WEATHER PT. CLOUDY

COUNTY WILLIAMS

R.C. MIKLOVIC

TEMP. +50°

TOWNSHIP SUPERIOR

SECTION 10

T 7 N R 2 E

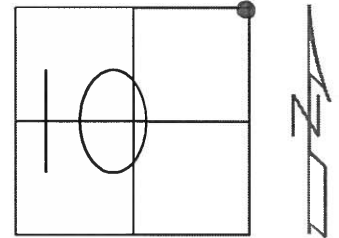
TYPE MONUMENT P.K./WASHER

ON SURFACE - ~~BELOW~~ SURFACE

LEFT - ~~PAV'T~~ - RIGHT 0.9' LT C

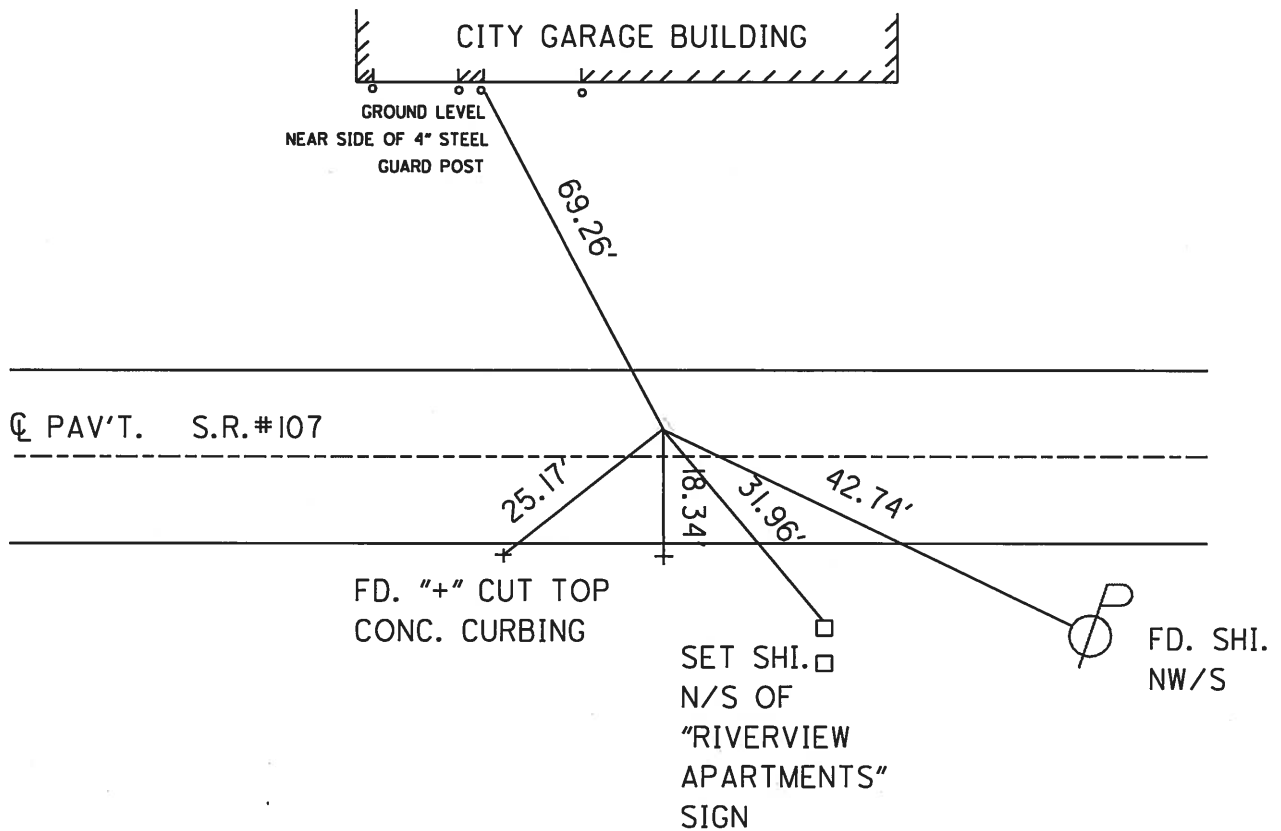
18.1' TO RT. EDGE PAVEMENT

S.L.M. 426+80



RECORD:  $\Delta = 0^\circ - 10'$  RT.  
STA. 105+68.50 - 1948 PLAN

RESET MAG & WASHER  
8/15/05 MB



RESURFACE PROJECT 5/18/05

O.D.O.T. DISTRICT 2 SURVEY OFFICE

PERSONNEL

REFERENCE NO. 17

SHEET 1 OF 5

NOTES BARNHISEL

H.C. CANTERBURY

R.C. BARNHISEL

DATE 10-18-02

WEATHER PT. CLOUDY

TEMP. + 43°

ROUTE S.R.# 107

COUNTY WILLIAMS

TOWNSHIP SUPERIOR

SECTION 10

T 7 N R 2 E

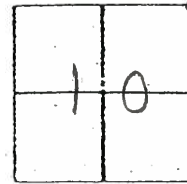
TYPE MONUMENT P.K. / WASHER

ON SURFACE - BELOW SURFACE

LEFT - C PAV'T. - RIGHT 0.9' LT &

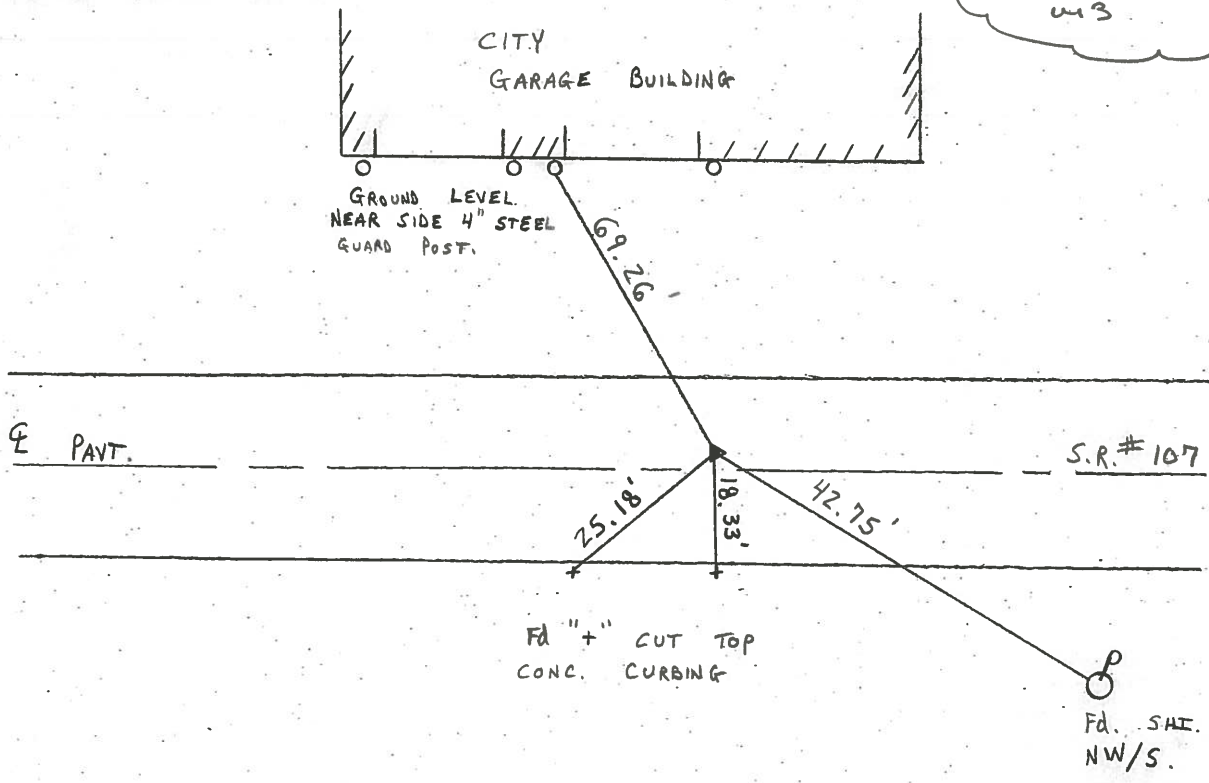
18.1 TO RT EDGE PAVEMENT

S.L.M. 426 + 80



RECORD: Δ = 0° - 10' RT.  
STA 105+68.50 - 1948 PLAN

NOT COVERED  
8-25-03  
M3



Resurface/Repair Project 2002

O.D.O.T. DISTRICT 2 SURVEY OFFICE

PERSONNEL

REFERENCE NO. 17

SHEET 1 OF 5

NOTES LOHRKE

H.C. ROMETO

R.C. CANTERBURY

CORDS

DATE 6-16-93

WEATHER Pt Cloudy

TEMP. +75

ROUTE S.R. 107

COUNTY Williams

TOWNSHIP Superior

SECTION 10

T 7 N R 2 E

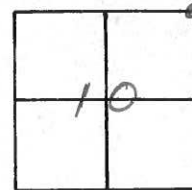
TYPE MONUMENT P.K / WASHER

ON SURFACE - ~~BELOW~~ Yes

LEFT- & PAV'T. - ~~RIGHT~~ 1.7

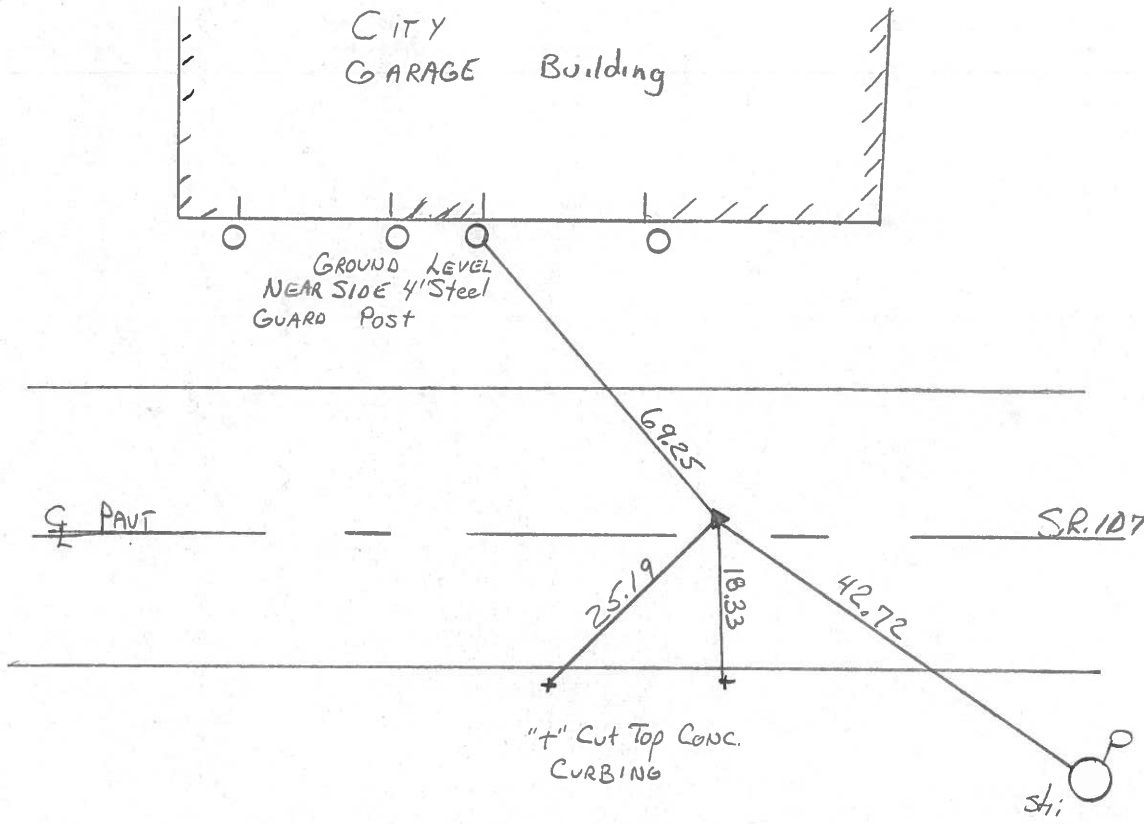
18.1 TO RT EDGE PAVEMENT

S.L.M. 426+80



1948 PLAN  
 $\Delta = 0^{\circ} 10' R$   
 Sta. 105+68.50

1" I. Pin 3" down 1992



Resurfaced 1993

O.D.O.T. DISTRICT 2 SURVEY OFFICE

PERSONNEL

REFERENCE NO. 17

SHEET 17 OF 18

NOTES LOEHRKE

H.C. CURTIS

R.C. ROMETO

DATE 5-21-92

WEATHER CLEAR

TEMP. +78

ROUTE S.R. 107

COUNTY Williams

TOWNSHIP Superior

SECTION 3

T7 NR 2 E

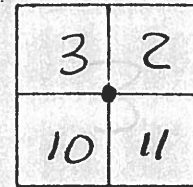
TYPE MONUMENT IRON PIN - 1" DIA.

ON SURFACE - BELOW 3"

LEFT - C PAV'T. - RIGHT 0.9

17.8 TO Lt. EDGE PAVEMENT

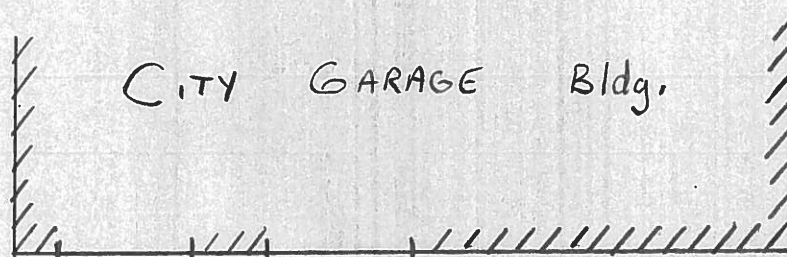
S.L.M. 426+79



Rec P.I. Sta 105+68.50

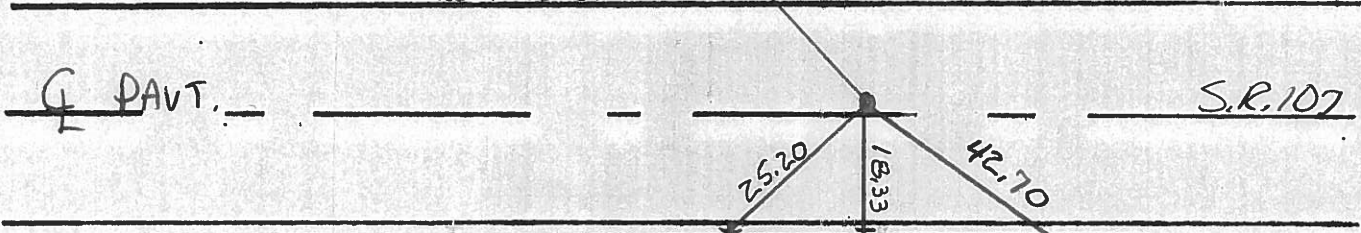
$\Delta = 0^\circ - 10' \text{ Rt}$

1948 PLANS



Near SIDE  
@ GROUND - 4" Steel  
Post at Door, 3<sup>rd</sup> Post  
From West

69.27



25.20

18.33

42.70

4" Top CONX CURB

P  
Sta. NW/S

# O.D.O.T. DISTRICT 2 SURVEY OFFICE

PERSONNEL \_\_\_\_\_

REFERENCE NO. \_\_\_\_\_

SHEET \_\_\_\_\_ OF \_\_\_\_\_

NOTES HOFFMAN

H.C. BARNHISEL

R.C. LOEHRKE

DATE 6-12-86

WEATHER Cloudy

TEMP. 66°

ROUTE SR 107

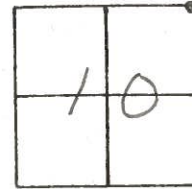
COUNTY Williams

TOWNSHIP Superior

SECTION 10

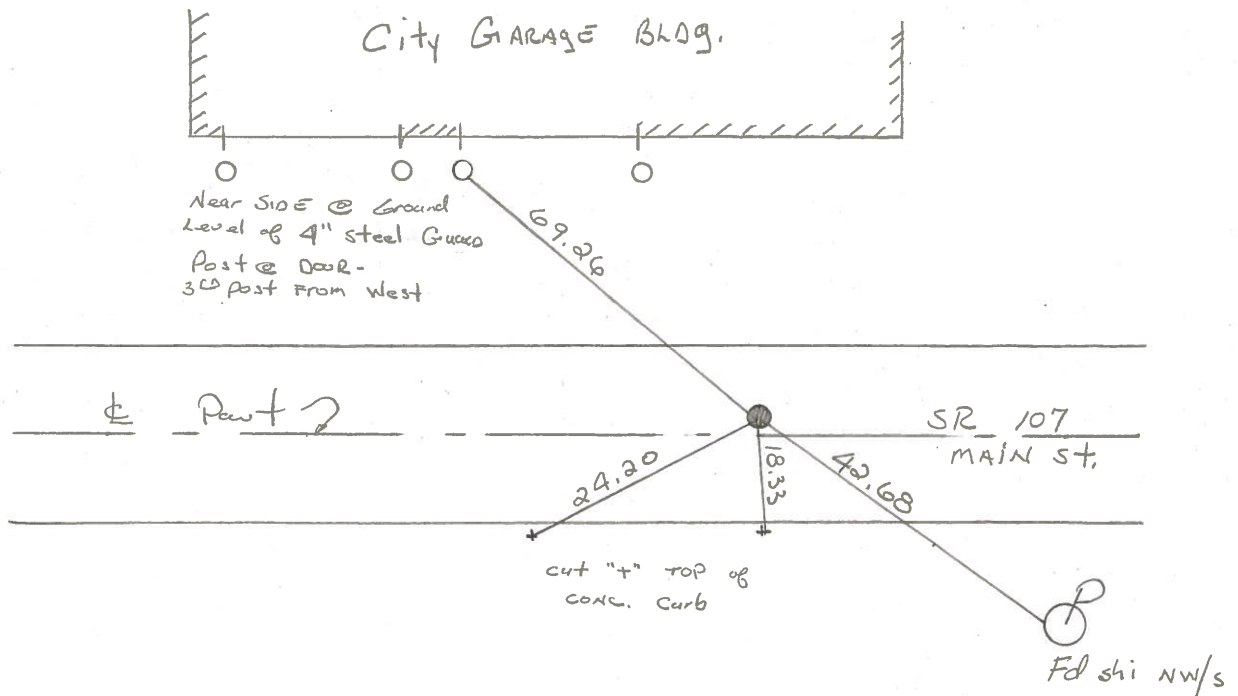
T 7 NR 2 E

TYPE MONUMENT IRON PIN - 1" DIA.  
~~ON SURFACE~~ - BELOW 3"  
 LEFT - CL. PAV'T. - RIGHT 0.9'  
17.8 TO LT. EDGE PAVEMENT  
 S.L.M. 426+25.05 / 105+68.50 1948 PLAN



1948 PLAN  
 $\Delta = 0^\circ - 10' RT$

17



PERSONNEL TITLE PERSONNEL TITLE

Stewart

COUNTY WILLIAMS

DATE 2-14-58  
COPIED-5-25-61

# 107

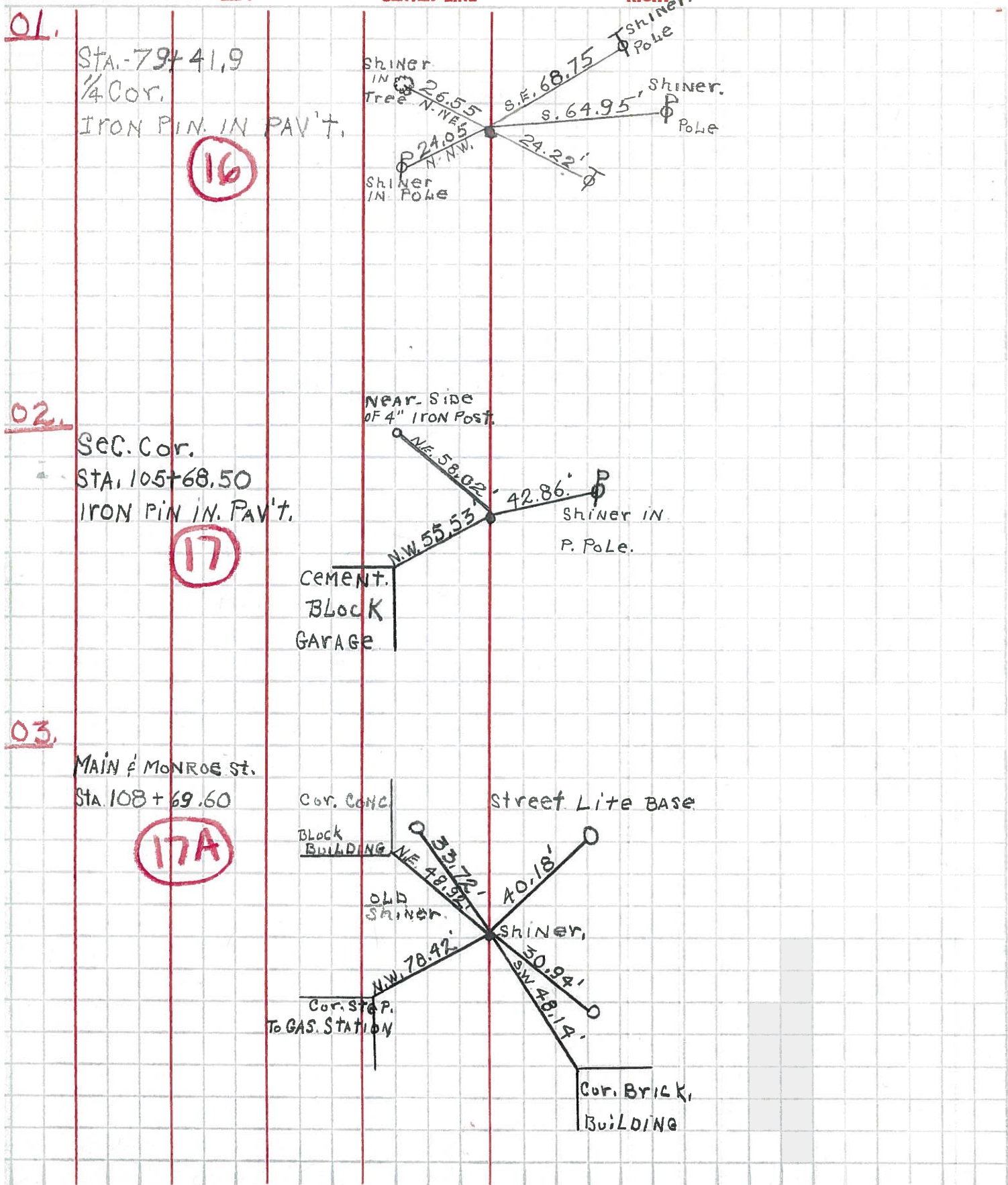
S. R. \_\_\_\_\_

WEATHER \_\_\_\_\_

SEC. "L" Montpelier TEMP. \_\_\_\_\_

DESCRIPTION Recheck of Control Points.

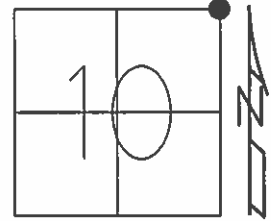
JOB NO. \_\_\_\_\_



O.D.O.T. DISTRICT 2 SURVEY OFFICE (USE ONLY)

PERSONNEL	REFERENCE NO.	<u>17</u>	SHEET	<u>18</u>	OF	<u>18</u>
NOTES	<u>RHOADES</u>	DATE	<u>6-17-14</u>	ROUTE	<u>SR 107</u>	
H.C.	<u>RHOADES</u>	WEATHER	<u>FAIR</u>	COUNTY	<u>WILLIAMS</u>	
R.C.	<u>MEYER</u>	TEMP.	<u>85°</u>	TOWNSHIP	<u>SUPERIOR</u>	
				SECTION	<u>10</u>	
				<u>T 7 N</u>	<u>R 2 E</u>	

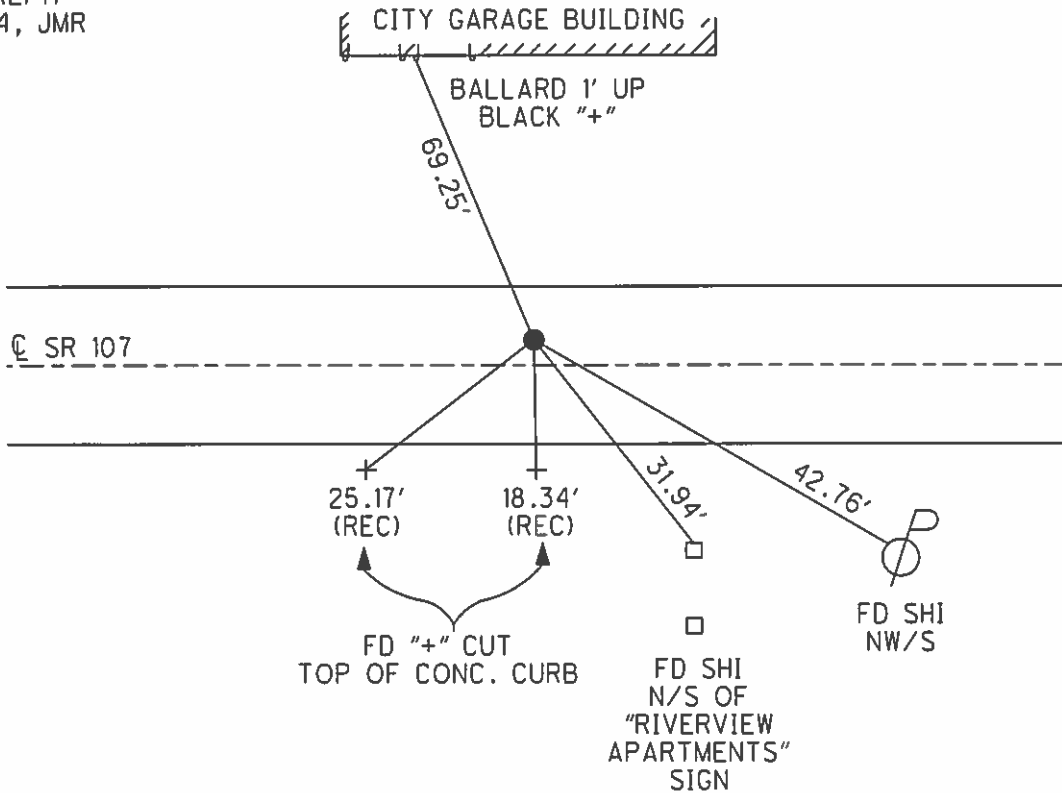
TYPE MONUMENT PK/WASHER  
 ON SURFACE - ~~BELOW~~ ON \_\_\_\_\_  
 LEFT - ☉ PAV'T - ~~RIGHT~~ 0.9'  
18.1' TO RT EDGE PAVEMENT  
 S.L.M. 426+80  
 Grid: Northing: 706433.244 Easting: 1390457.423



RECORD:  $\Delta = 0^\circ-10'$  RT.  
 STA. 105+68.50, 1948 PLAN

RESET MAG & WASHER  
 8-15-05, M.B.

GPS, REF17  
 6-17-14, JMR



NOT COVERED  
 AFTER CHIP AND SEAL  
 12/31/14, EBW



PERSONNEL TITLE PERSONNEL TITLE  
 Red Beach \_\_\_\_\_  
 Newcomb \_\_\_\_\_  
 Knape \_\_\_\_\_  
 Wise \_\_\_\_\_

COUNTY Williams DATE Nov. 1968  
 S. R. 107 WEATHER \_\_\_\_\_  
 SEC. 896-11.05 TEMP. \_\_\_\_\_

DESCRIPTION ALIGNMENT JOB NO. 02734

