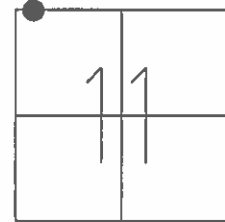


O.D.O.T. DISTRICT 2 SURVEY OFFICE (USE ONLY)

PERSONNEL _____ REFERENCE NO. 17 A SHEET 1 OF 13

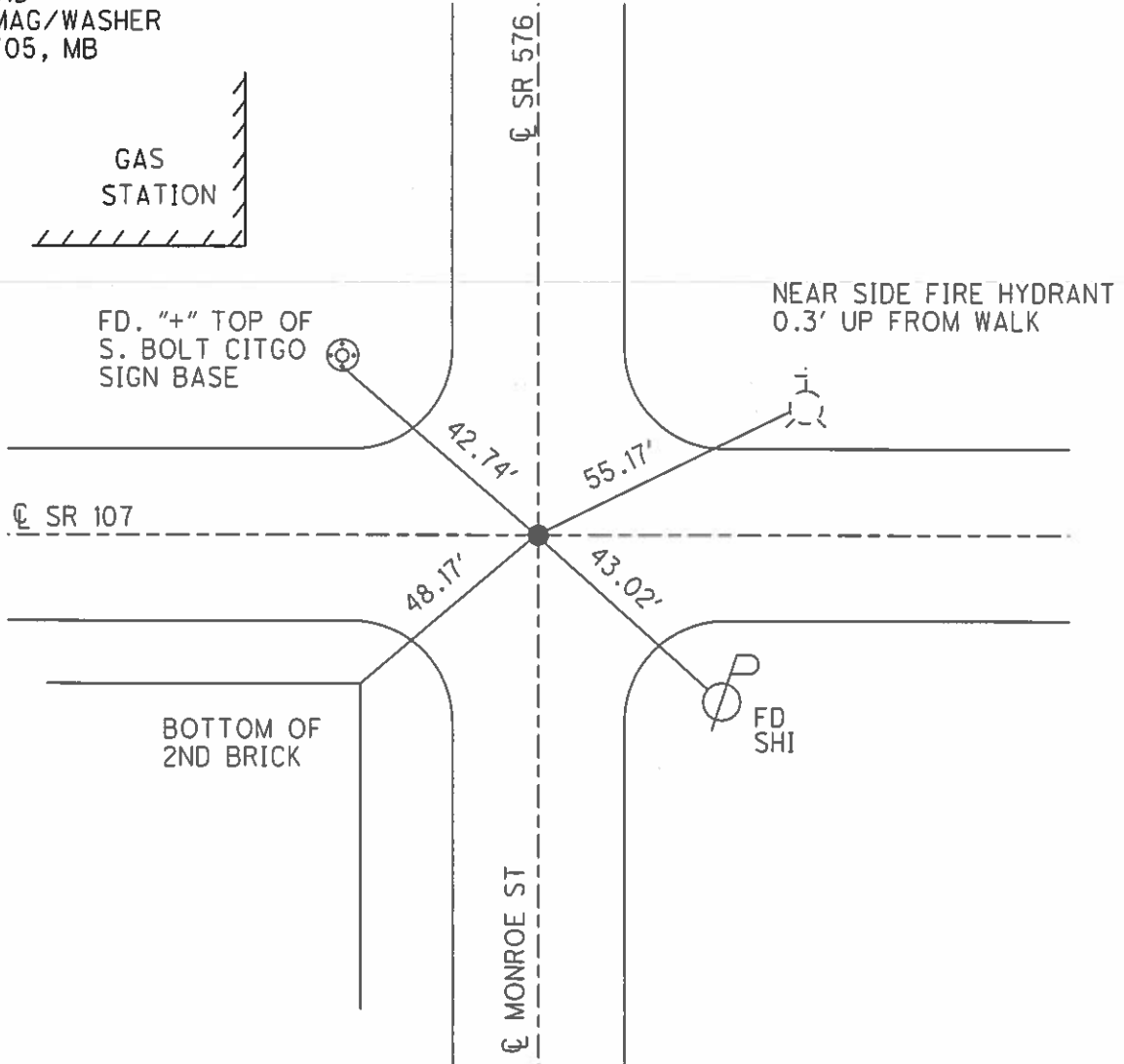
NOTES BARNHISEL DATE 5/18/05 ROUTE SR 107
 H.C. CANTERBURY WEATHER PT CLOUDY COUNTY WILLIAMS
 R.C. MIKLOVIC TEMP. 50° TOWNSHIP SUPERIOR
 SECTION 11
 T 7 N R 2 E

TYPE MONUMENT P.K./WASHER
 ON SURFACE - ~~BELOW~~ ON _____
 LEFT - ☉ PAV'T - RIGHT ON _____
 - TO - EDGE PAVEMENT
 S.L.M. 429+80



GRID: NORTHING: _____ EASTING: _____

RECORD:
 SET MAG/WASHER
 8/15/05, MB



O.D.O.T. DISTRICT 2 SURVEY OFFICE

PERSONNEL

REFERENCE NO. 17-A
88

SHEET 2 OF 10

NOTES BARNHESEL

DATE 5/18/05

ROUTE S.R.#107

H.C. CANTERBURY

WEATHER PT. CLOUDY

COUNTY WILLIAMS

R.C. MIKLOVIC

TEMP. +50°

TOWNSHIP SUPERIOR

SECTION 11

T 7 N R 2 E

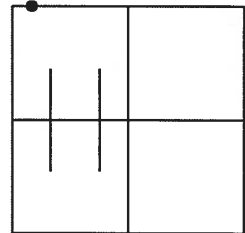
TYPE MONUMENT P.K. WASHER

ON SURFACE - ~~BELOW~~ SURFACE

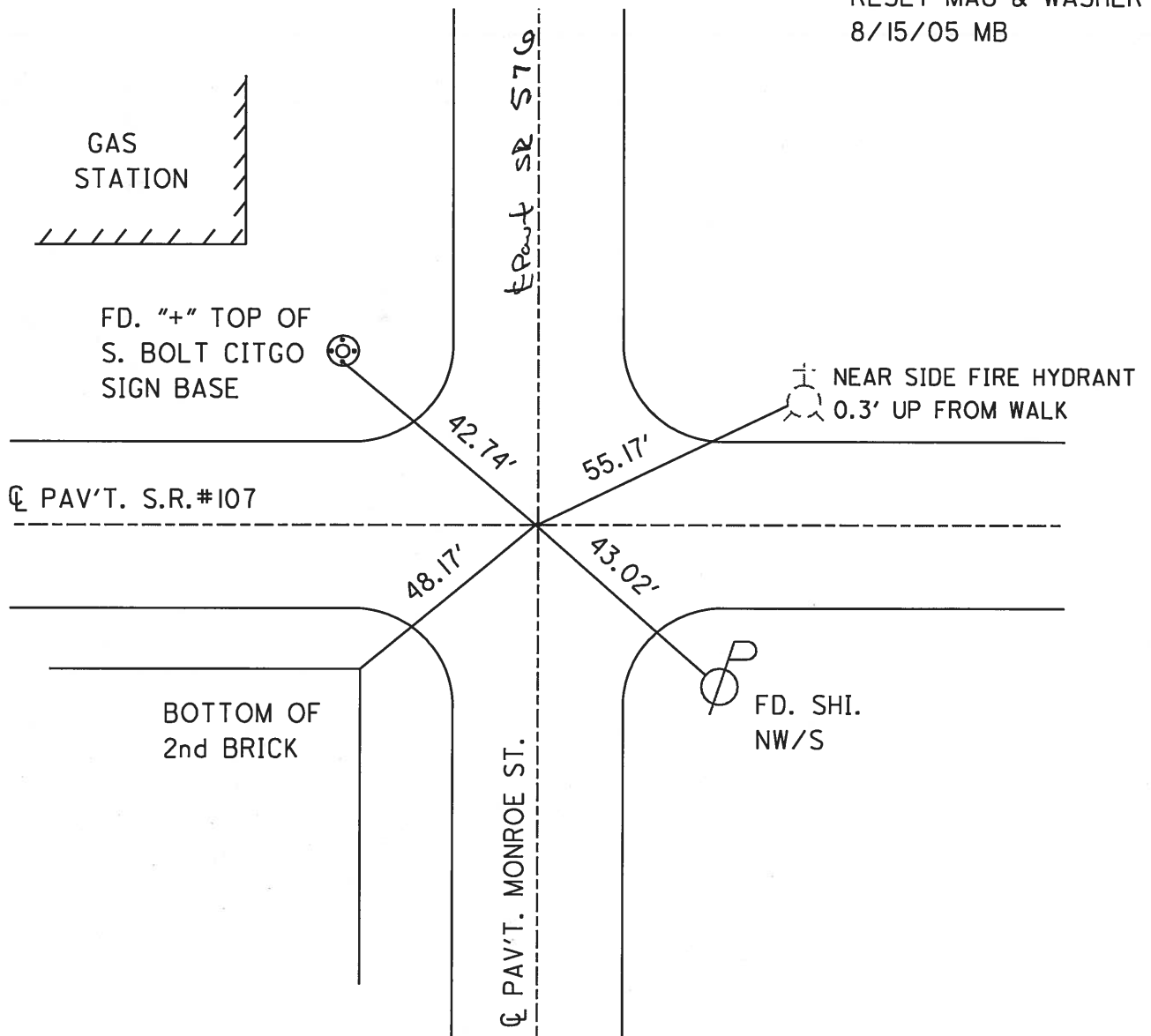
~~LEFT~~ - ☉ PAV'T - ~~RIGHT~~ ☉ BOTH

TO EDGE PAVEMENT

S.L.M. 429+80



RESET MAG & WASHER
8/15/05 MB



O.D.O.T. DISTRICT 2 SURVEY OFFICE

PERSONNEL

REFERENCE NO. 18

SHEET 3 OF 3

NOTES BARNHISEL

H.C. CANTERBURY

R.C. BARNHISEL

DATE 10-18-02

WEATHER PT. CLOUDY

TEMP. +43°

ROUTE S.R. #107

COUNTY WILLIAMS

TOWNSHIP SUPERIOR

SECTION 11

T 7 N R 2 E

TYPE MONUMENT P.K. WASHER

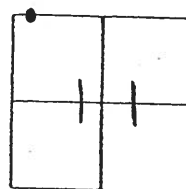
ON SURFACE - ~~BELOW~~ SURFACE

~~LEFT - & PAVT. - RIGHT~~ & BOTH

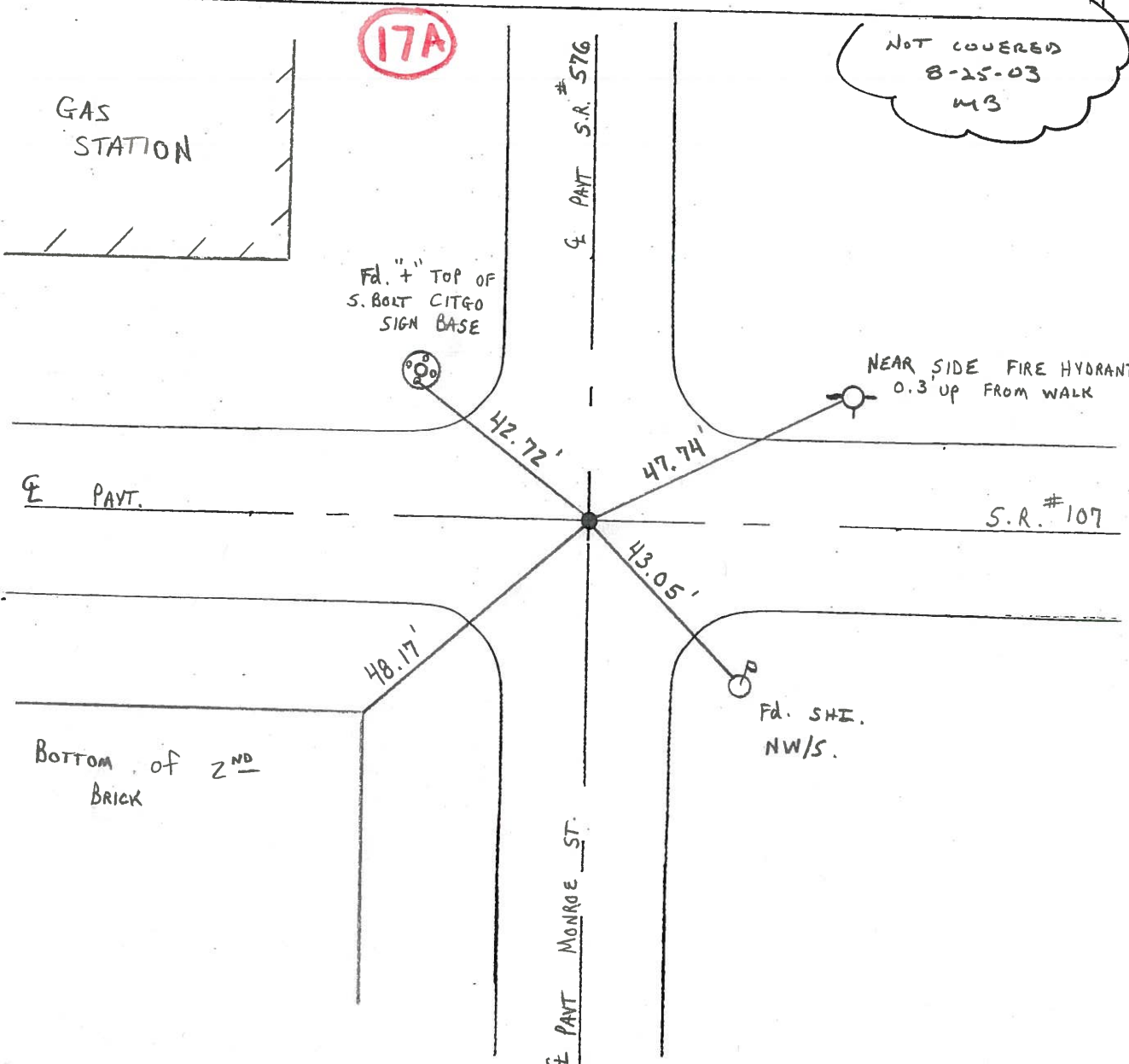
TO EDGE PAVEMENT

S.L.M. 429 + 80

(8.13)



NOT COVERED
8-25-03
MB



O.D.O.T. DISTRICT 2 SURVEY OFFICE

PERSONNEL _____

REFERENCE NO. 18

SHEET 2 OF 5

NOTES LOEHRKE

H.C. RONETO

DATE 6-16-93

ROUTE S.R. 107

R.C. CANTERBURY

WEATHER Pt Cloudy

COUNTY Williams

CORDES

TEMP. +75

TOWNSHIP Superior

SECTION 11

T 7 N R 2 E

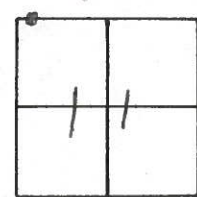
TYPE MONUMENT P.K./WASHER

ON SURFACE - BELOW Yes

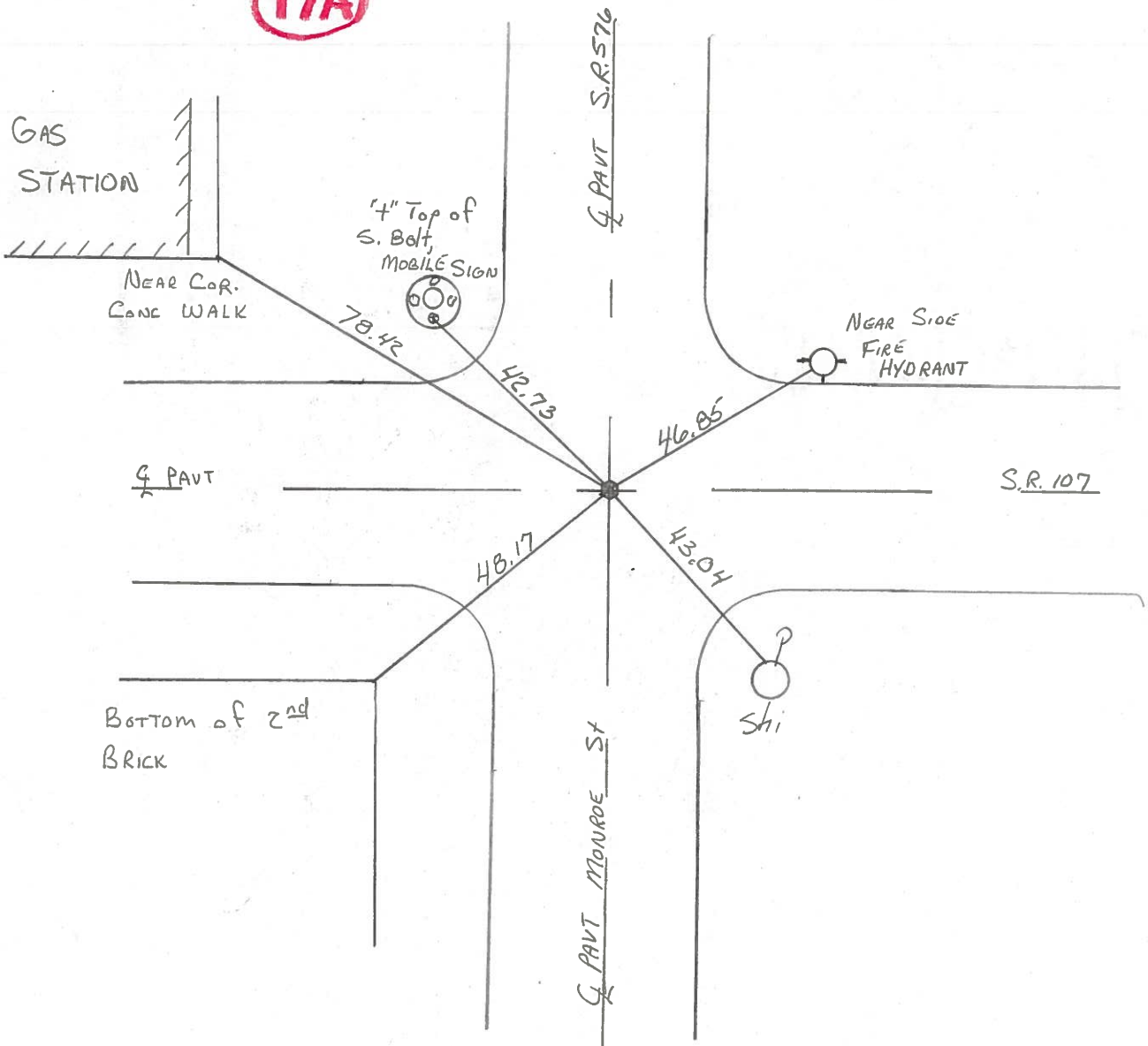
~~LEFT~~ - PAV'T. - ~~RIGHT~~ Both

TO EDGE PAVEMENT

S.L.M. 429+80



17A



O.D.O.T. DISTRICT 2 SURVEY OFFICE

PERSONNEL

REFERENCE NO. 18

SHEET 18 OF 18

NOTES LOHRKE

H.C. CURTIS

R.C. ROMETO

DATE 5-21-92

WEATHER CLEAR

TEMP. +80

ROUTE S.R. 107

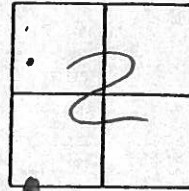
COUNTY Williams

TOWNSHIP SUPERIOR

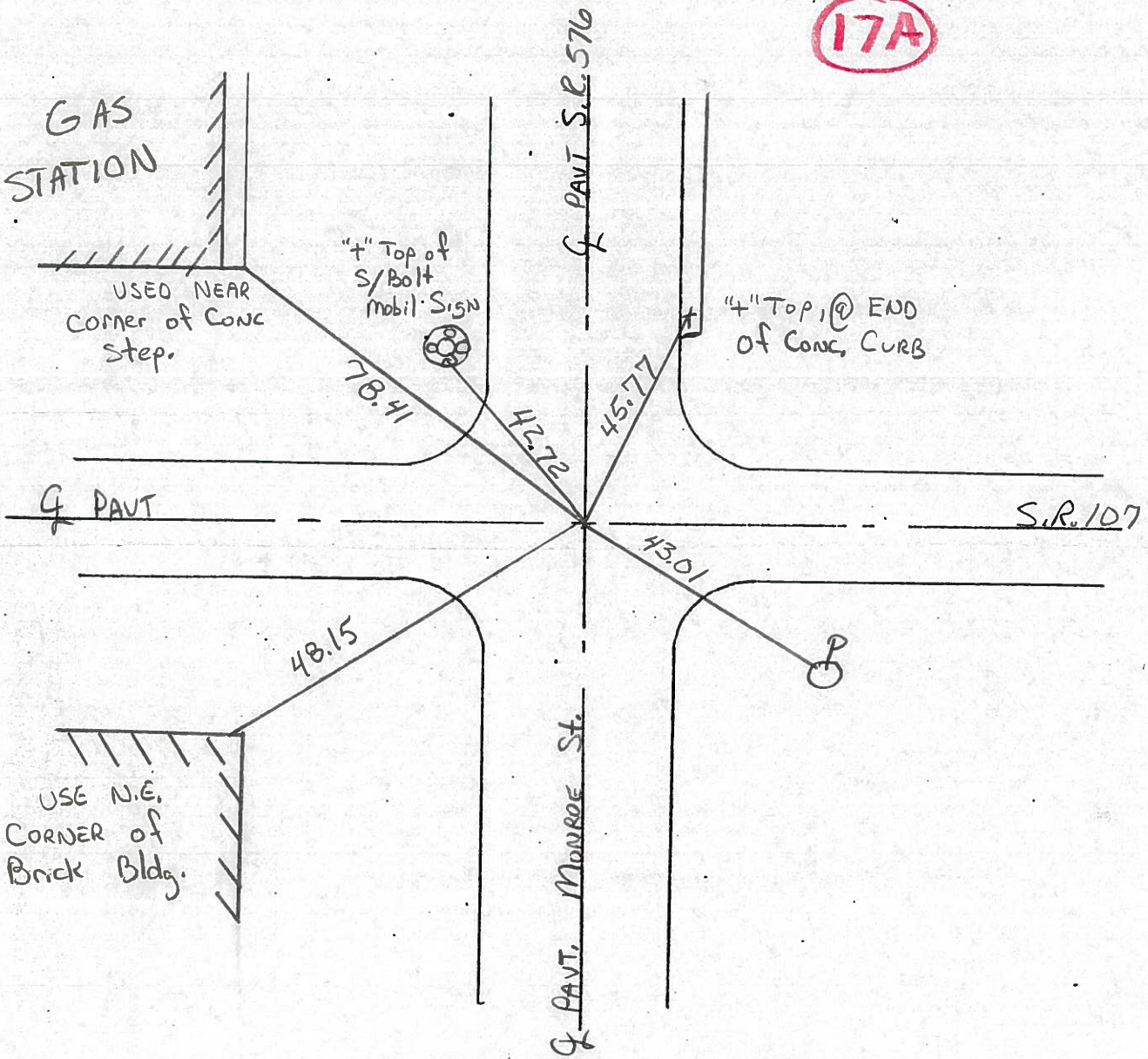
SECTION 2

T7 N R 2 E

TYPE MONUMENT Shank of R.R. Spike
 ON ~~SURFACE~~ - BELOW 1"
~~LEFT - & PAV'T. - RIGHT~~ Both PAVT
TO EDGE PAVEMENT
 S.L.M. 429+81



17A



O.D.O.T. DISTRICT 2 SURVEY OFFICE

PERSONNEL _____

REFERENCE NO. _____

SHEET _____ OF _____

NOTES Hoffman

H.C. BARNHISEL

R.C. LOEHRKE

DATE 6-17-86

WEATHER OVERCAST

TEMP. 66°

ROUTE SR 107

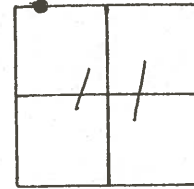
COUNTY Williams

TOWNSHIP SUPERIOR

SECTION 11

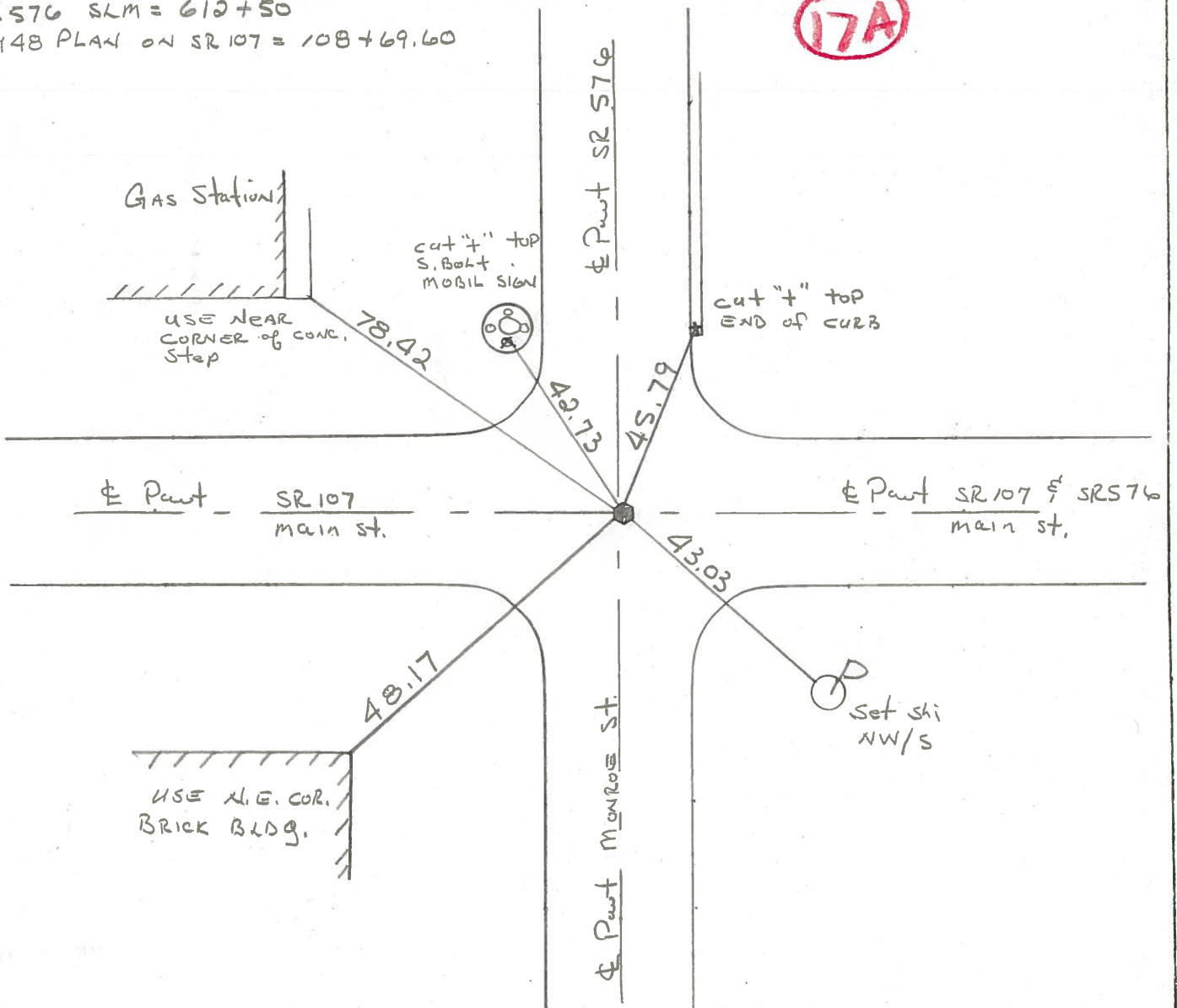
T. 7 N. R. 25

TYPE MONUMENT P.R. SPIKE-SHANK
~~ON SURFACE - BELOW 1"~~
~~LEFT - & PAWT. - RIGHT~~ BOTH PAWT'S
TO EDGE PAVEMENT
 S.L.M. 429 + 26.34



SR 576 SLM = 612 + 50
 1948 PLAN ON SR 107 = 108 + 69.60

17A



PERSONNEL TITLE PERSONNEL TITLE
 STEWART _____

COUNTY WILLIAMS DATE 2-14-58
 # 107 COPIED-5-25-61
 S. R. _____ WEATHER _____
 SEC. "L" Montpelier TEMP. _____

DESCRIPTION Recheck of Control Points. JOB NO. _____

