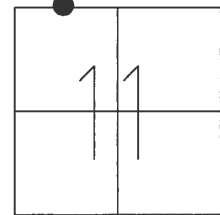


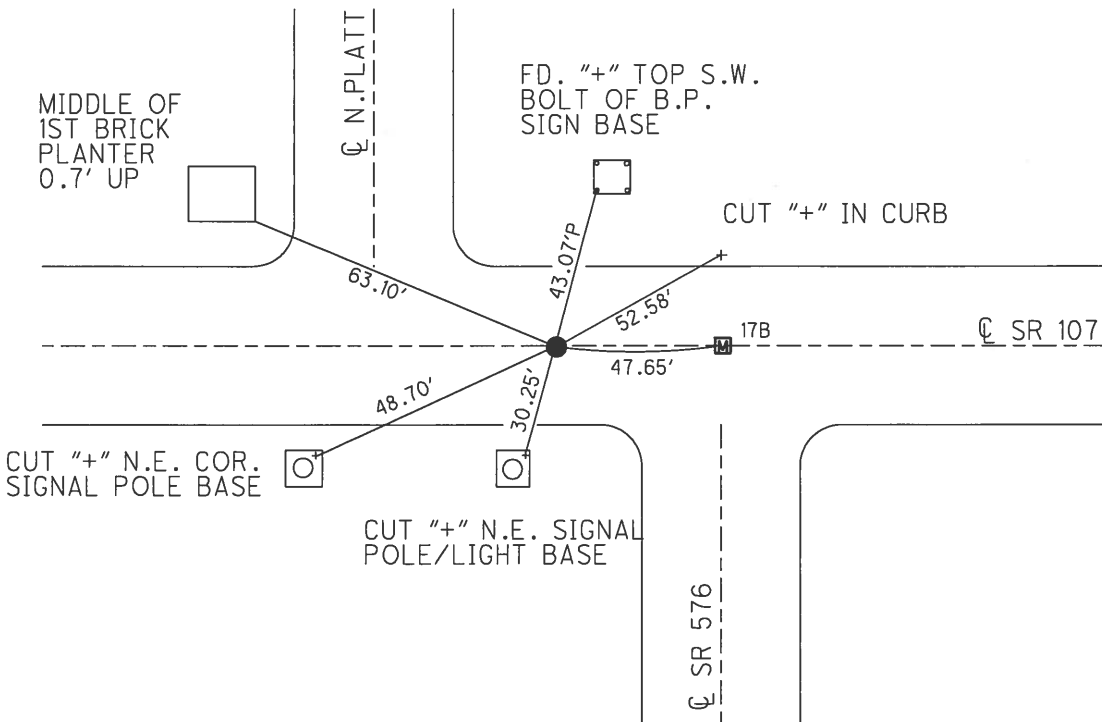
O.D.O.T. DISTRICT 2 SURVEY OFFICE (USE ONLY)

PERSONNEL _____ REFERENCE NO. 17 AB SHEET 6 OF 25
 NOTES BARNHISEL DATE 5/18/05 ROUTE SR 107
 H.C. CANTERBURY WEATHER CLOUDY COUNTY WILLIAMS
 R.C. MIKLOVIC TEMP. 50° TOWNSHIP SUPERIOR
 _____ SECTION 11
 _____ T 7 N R 2 E

TYPE MONUMENT P.K./WASHER
 ON SURFACE - ~~BELOW~~ ON _____
~~LEFT~~ - CL PAV'T - RIGHT 2', ON CLS
22' TO LT EDGE PAVEMENT
 S.L.M. 442+96
 GRID: NORTHING: - _____ EASTING: - _____



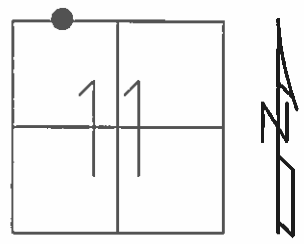
RECORD:
 SET MAG/WASHER
 8/15/05, MB
 D.N.F.
 6/17/14, JMR



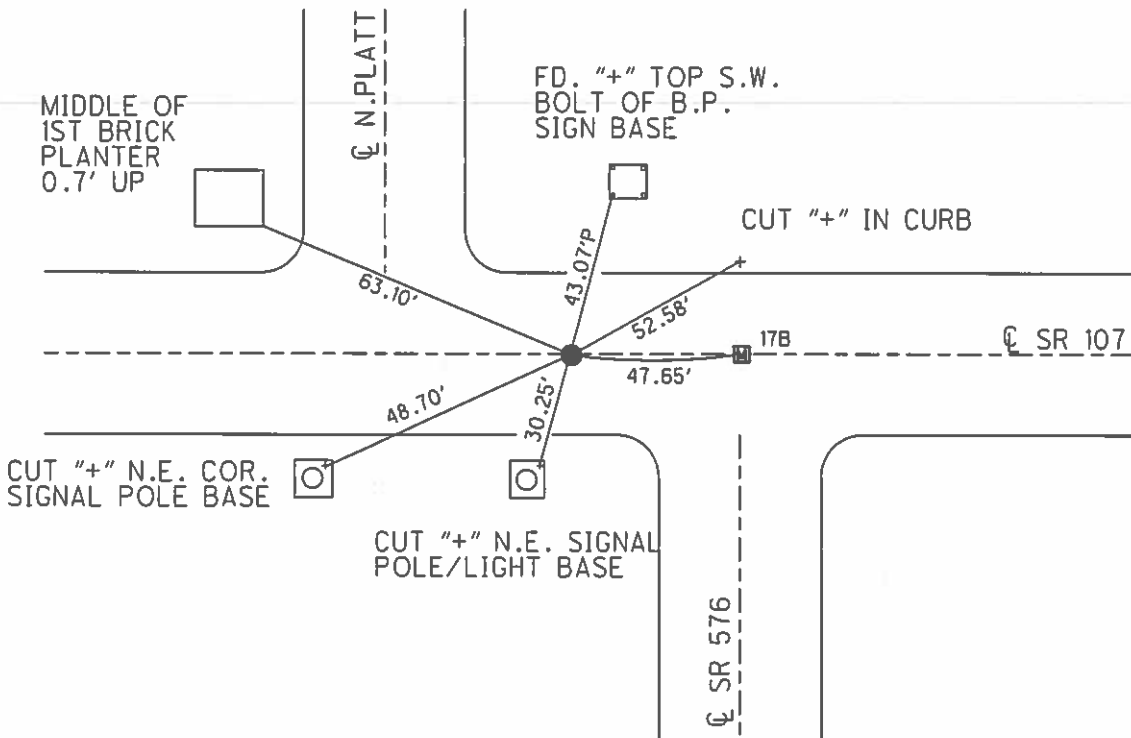
O.D.O.T. DISTRICT 2 SURVEY OFFICE (USE ONLY)

PERSONNEL _____ REFERENCE NO. 17 AB SHEET 2 OF 13
 NOTES BARNHISEL DATE 5/18/05 ROUTE SR 107
 H.C. CANTERBURY WEATHER CLOUDY COUNTY WILLIAMS
 R.C. MIKLOVIC TEMP. 50° TOWNSHIP SUPERIOR
 SECTION 11
 T 7 N R 2 E

TYPE MONUMENT P.K./WASHER
 ON SURFACE - ~~BELOW~~ ON
~~LEFT~~ - Q PAV'T - RIGHT 2', ON Q S
22' TOLT EDGE PAVEMENT
 S.L.M. 443+00
 GRID: NORTHING: _____ EASTING: _____



RECORD:
 SET MAG/WASHER
 8/15/05, MB



O.D.O.T. DISTRICT 2 SURVEY OFFICE

PERSONNEL

REFERENCE NO. 17-B

SHEET 3 OF 10

NOTES BARNHISEL

DATE 5/18/05

ROUTE S.R.#107

H.C. CANTERBURY

WEATHER CLOUDY

COUNTY WILLIAMS

R.C. MIKLOVIC

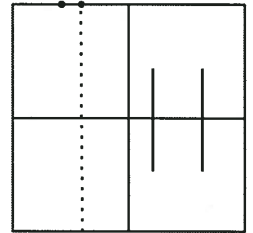
TEMP. +50°

TOWNSHIP SUPERIOR

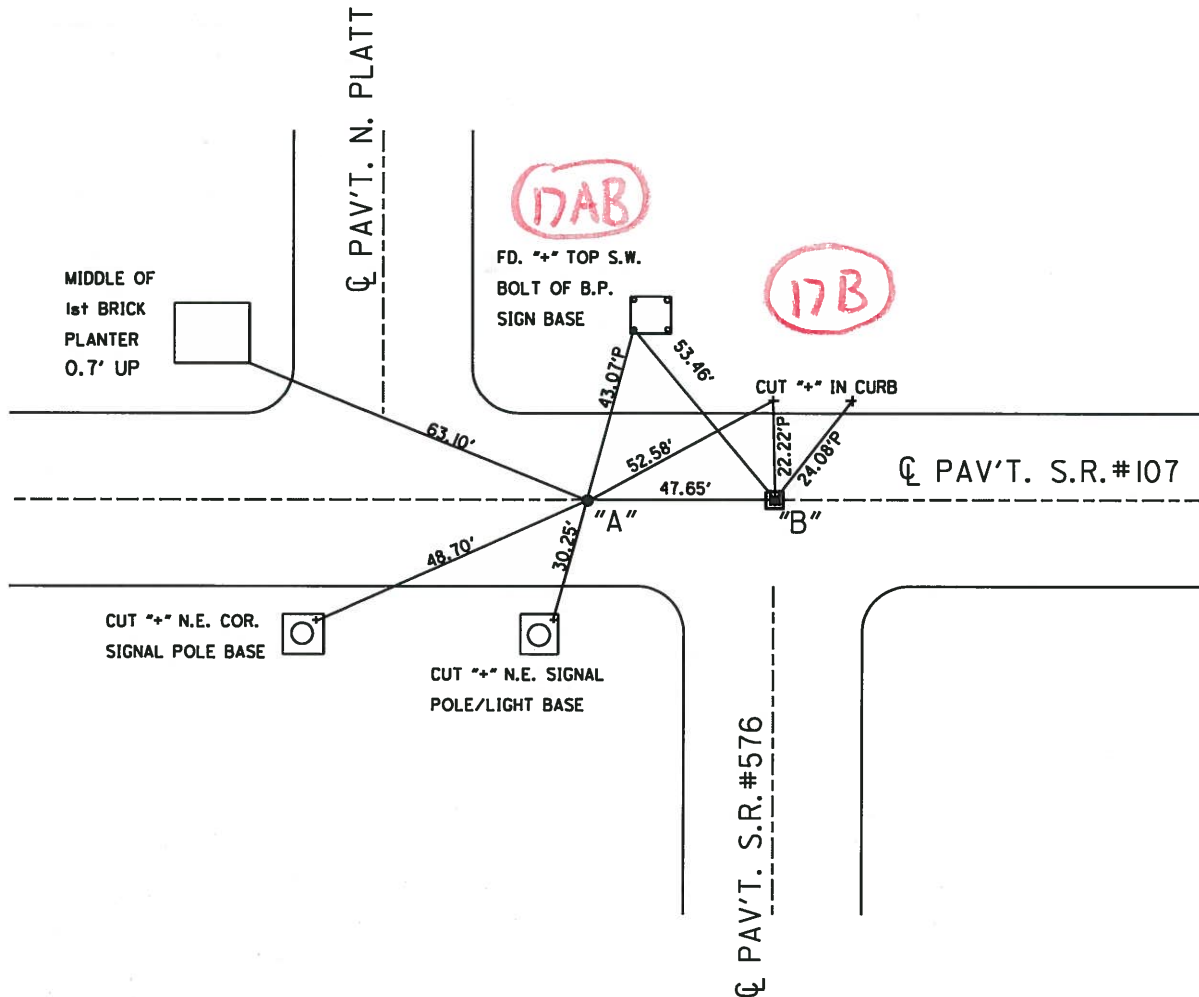
SECTION 11

T 7 N R 2 E

PT. "A"	PT. "B"
TYPE MONUMENT <u>P.K. WASHER</u>	<u>MON. BOX W/ I. ROD</u>
ON SURFACE - BELOW SURFACE	<u>SURFACE</u>
LEFT <u>PAV'T</u> - RIGHT <u>2'RT</u>	<u>2'RT</u>
<u>22'</u> TO LT. EDGE PAVEMENT	<u>ON ϕ SOUTH</u>
S.L.M. <u>PT."A"443+00</u>	<u>PT."B"443+48</u>



RESET MAG & WASHER
8/15/05 MB



O.D.O.T. DISTRICT 2 SURVEY OFFICE

PERSONNEL

REFERENCE NO. 18a-18b

SHEET OF

NOTES BARNHISEL

H.C. CANTERBURY

R.C. BARNHISEL

DATE 10-18-02

WEATHER CLOUDY

TEMP. +43°

ROUTE S.R. #107

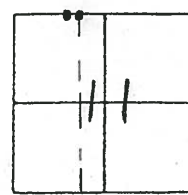
COUNTY WILLIAMS

TOWNSHIP SUPERIOR

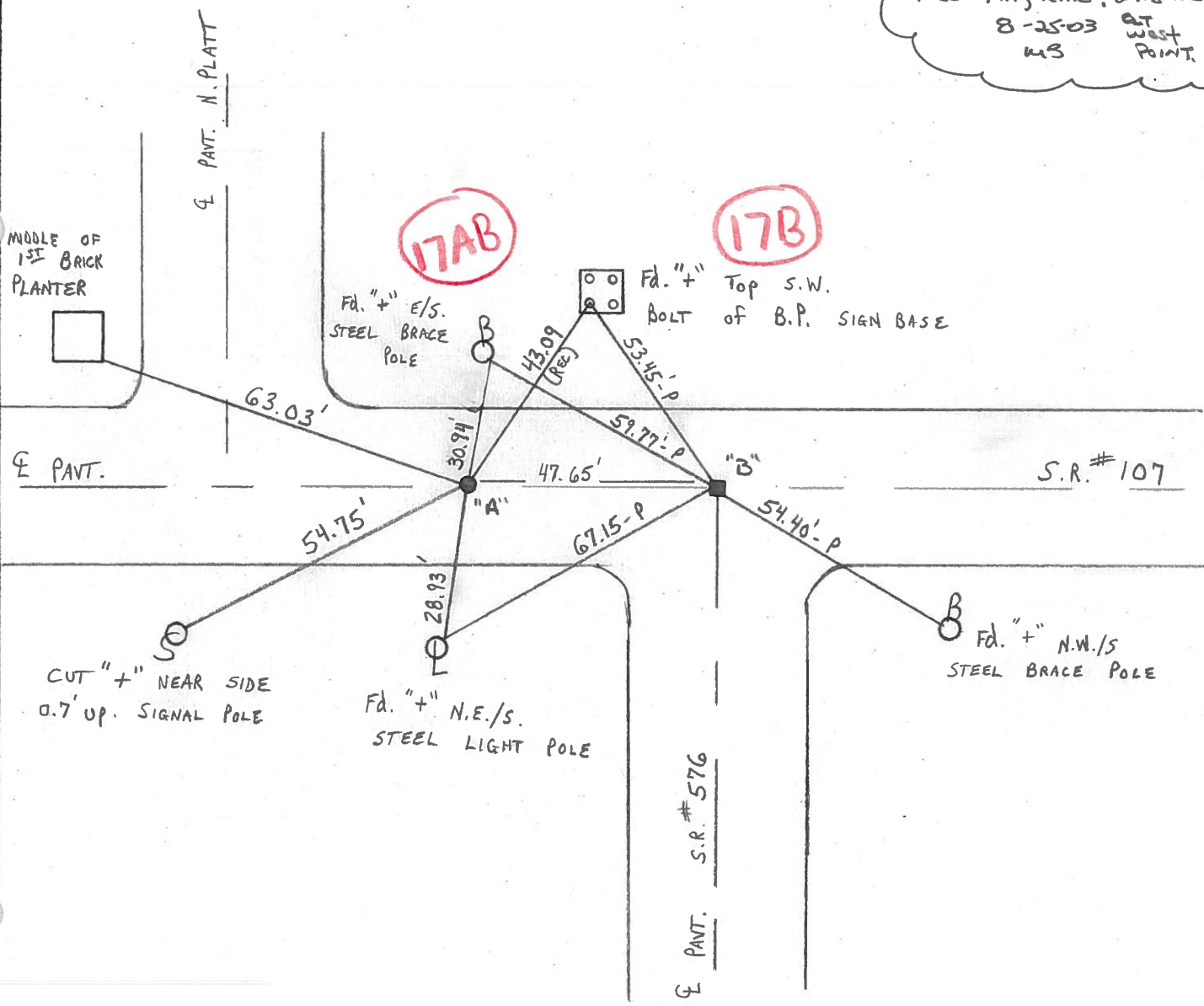
SECTION 11

T 7 N R 2 W

PT "A"	PT. "B"
TYPE MONUMENT <u>P.K./WASHER</u>	<u>MON BOX</u>
ON SURFACE - <u>BELOW SURFACE</u>	<u>SURFACE</u>
LEFT - <u>& PAV'T. - RIGHT</u>	<u>2 RT</u>
<u>22.0 TO LT. EDGE PAVEMENT</u>	<u>ON & SOUTH</u>
S.L.M. <u>PT "A" 243+00</u>	<u>PT "B" 243+48 (8.39)</u>



RESET MAG NAIL & WASHER
 8-25-03 AT WEST POINT
 MS



O.D.O.T. DISTRICT 2 SURVEY OFFICE

PERSONNEL _____

REFERENCE NO. _____

SHEET 3 OF 5

NOTES LOEHRKE

H.C. ROMETO

DATE 6-16-93

ROUTE S.R. 107

R.C. CANTERBURY

WEATHER CLEAR

COUNTY William

CORDES

TEMP. +65

TOWNSHIP Superior

SECTION 11

T 7 N R E W

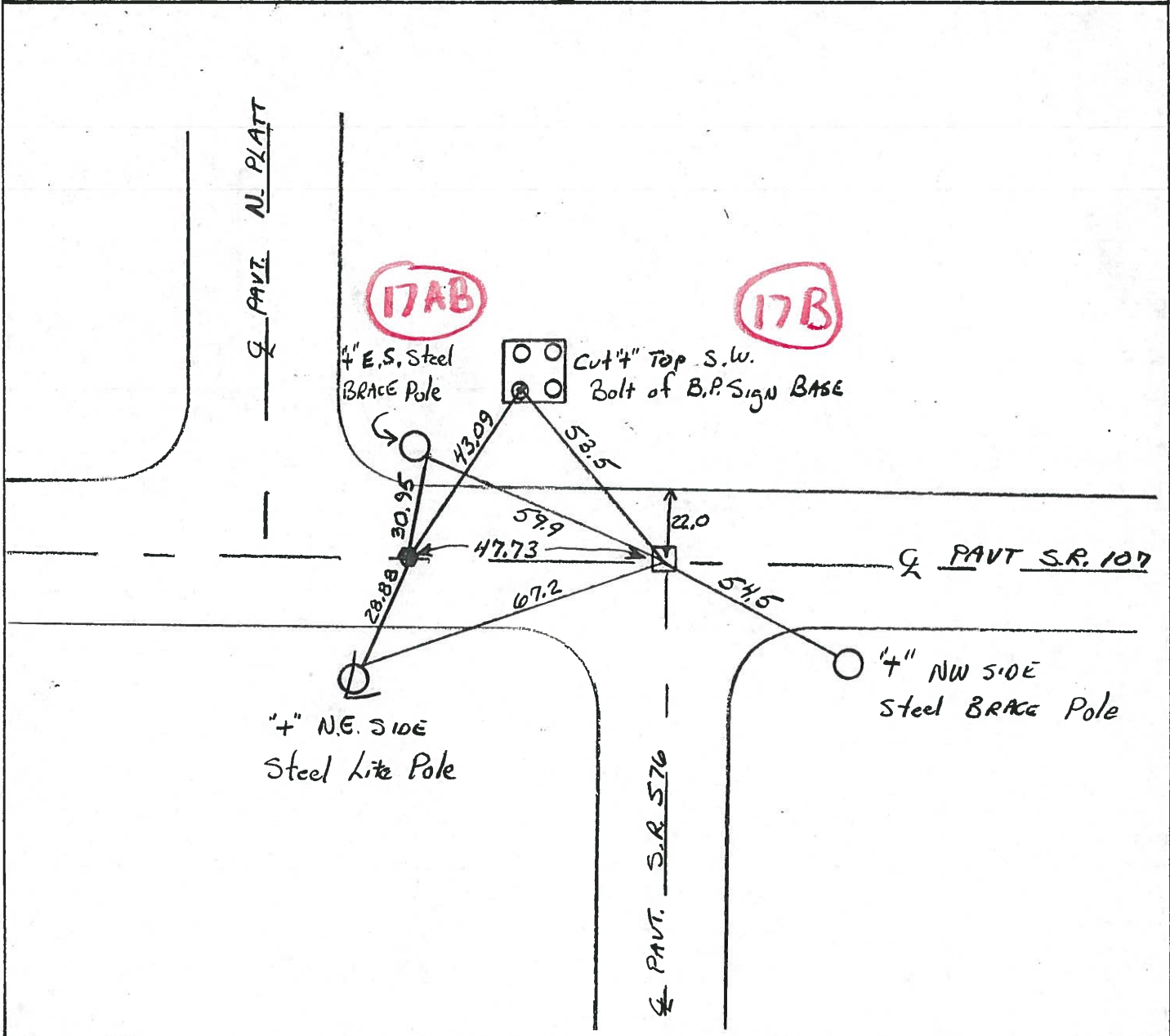
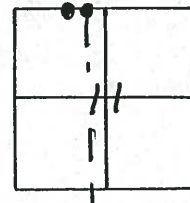
TYPE MONUMENT Set 8-5-93 P.K. NAIL / MON Box

ON SURFACE - BELOW Yes 2" Down

~~LEFT~~ - PAV'T. - RIGHT _____

22.0 TO L+ EDGE PAVEMENT

S.L.M. Box 243+48



O.D.O.T. DISTRICT 2 SURVEY OFFICE

SHEET 1 OF

County Williams S.R. 107

Date 14 Oct. 80

Township Superior

Weather Cloudy

Section 11

Temp. 57°

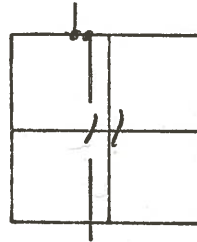
T_N, R_E

Personnel I. Stone

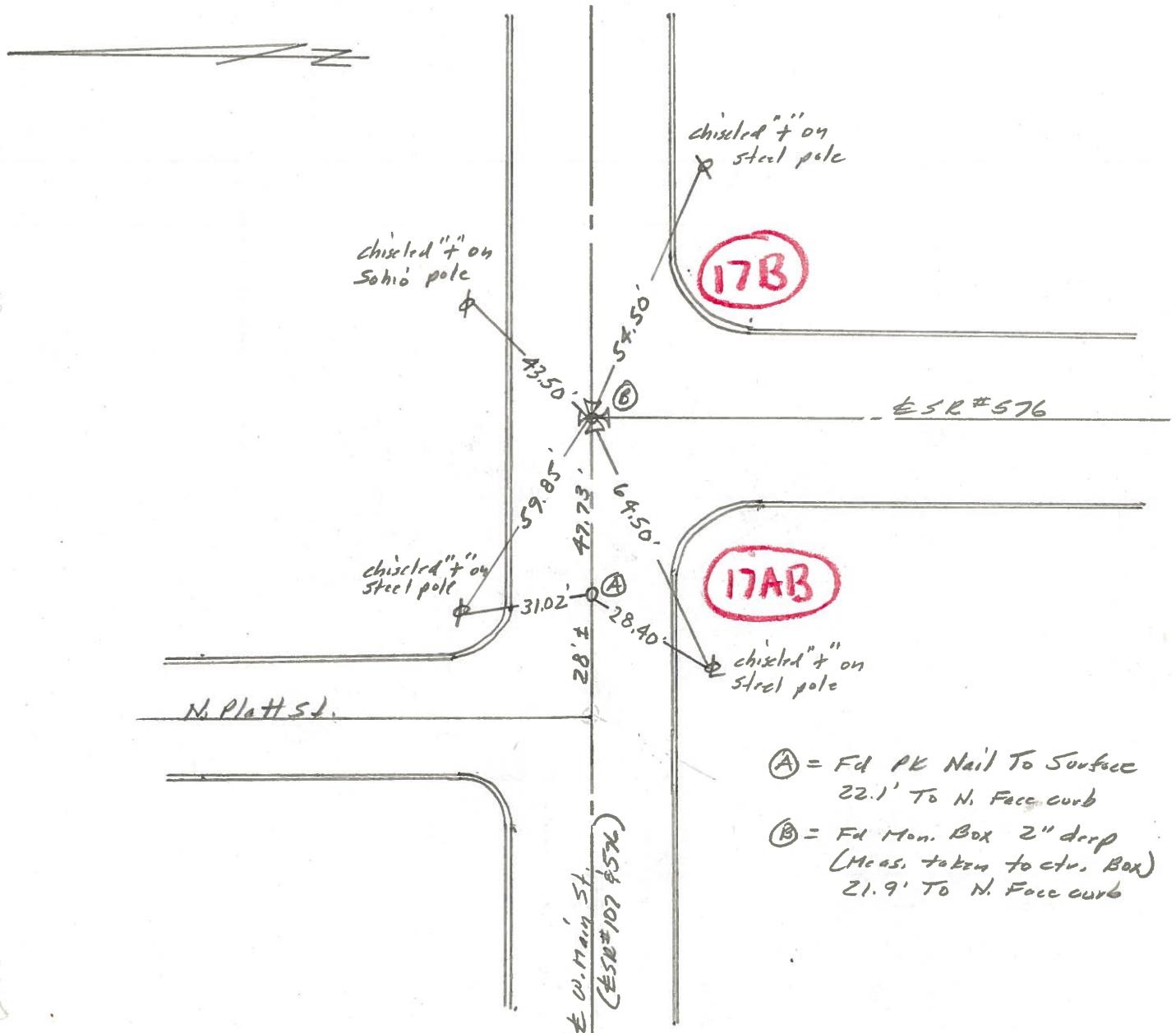
R. Michalak

P. Neuse

D. Curtis



REF. NO.



- Ⓐ = Fd PE Nail To Surface
22.1' To N. Face curb
- Ⓑ = Fd Mon. Box 2" deep
(Meas. taken to ctr. Box)
21.9' To N. Face curb