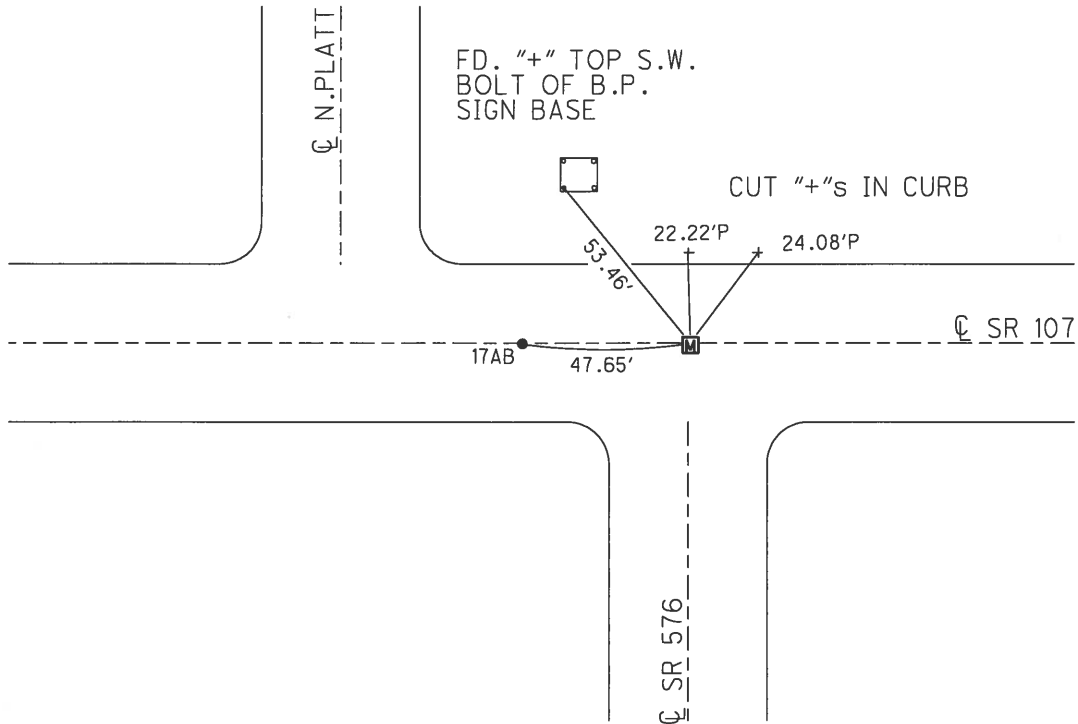
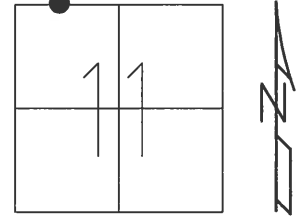


O.D.O.T. DISTRICT 2 SURVEY OFFICE (USE ONLY)

PERSONNEL _____ REFERENCE NO. 17 B SHEET 7 OF 25
 NOTES BARNHEISEL DATE 5/18/05 ROUTE SR 107
 H.C. CANTERBURY WEATHER CLOUDY COUNTY WILLIAMS
 R.C. MIKLOVIC TEMP. 50° TOWNSHIP SUPERIOR
 SECTION 11
 T 7 N R 2 E

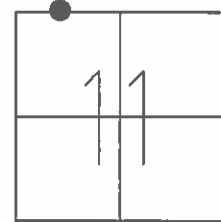
TYPE MONUMENT MONBOX W/IPIN
 ON SURFACE - ~~BELOW~~ ON _____
~~LEFT~~ - CL PAV'T - RIGHT 2', ON CL S
22' TO LT EDGE PAVEMENT
 S.L.M. 443+44.6
 GRID: NORTHING: 706404.197 EASTING: 1392124.819



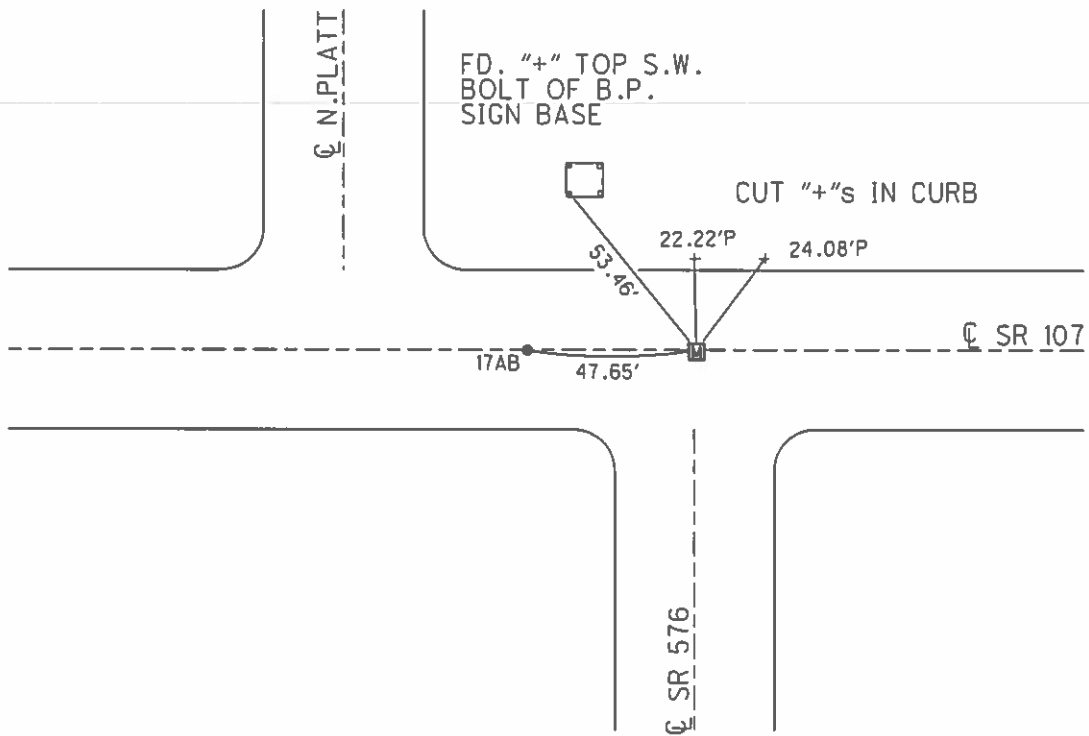
O.D.O.T. DISTRICT 2 SURVEY OFFICE (USE ONLY)

PERSONNEL _____ REFERENCE NO. 17 B SHEET 3 OF 13
 NOTES BARNHISEL DATE 5/18/05 ROUTE SR 107
 H.C. CANTERBURY WEATHER CLOUDY COUNTY WILLIAMS
 R.C. MIKLOVIC TEMP. 50° TOWNSHIP SUPERIOR
 SECTION 11
 T 7 N R 2 E

TYPE MONUMENT _____ MONBOX W/IPIN
 ON SURFACE - ~~BELOW~~ _____ ON _____
~~LEFT~~ - \odot PAV'T - RIGHT 2', ON \odot S
22' TOLT EDGE PAVEMENT
 S.L.M. 443+48
 GRID: NORTHING: _____ EASTING: _____



RECORD:
 SET MAG/WASHER
 8/15/05, MB



O.D.O.T. DISTRICT 2 SURVEY OFFICE

PERSONNEL

REFERENCE NO. 17-B

SHEET 3 OF 10

NOTES BARNHISEL

DATE 5/18/05

ROUTE S.R.#107

H.C. CANTERBURY

WEATHER CLOUDY

COUNTY WILLIAMS

R.C. MIKLOVIC

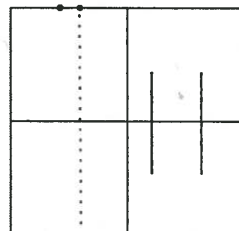
TEMP. +50°

TOWNSHIP SUPERIOR

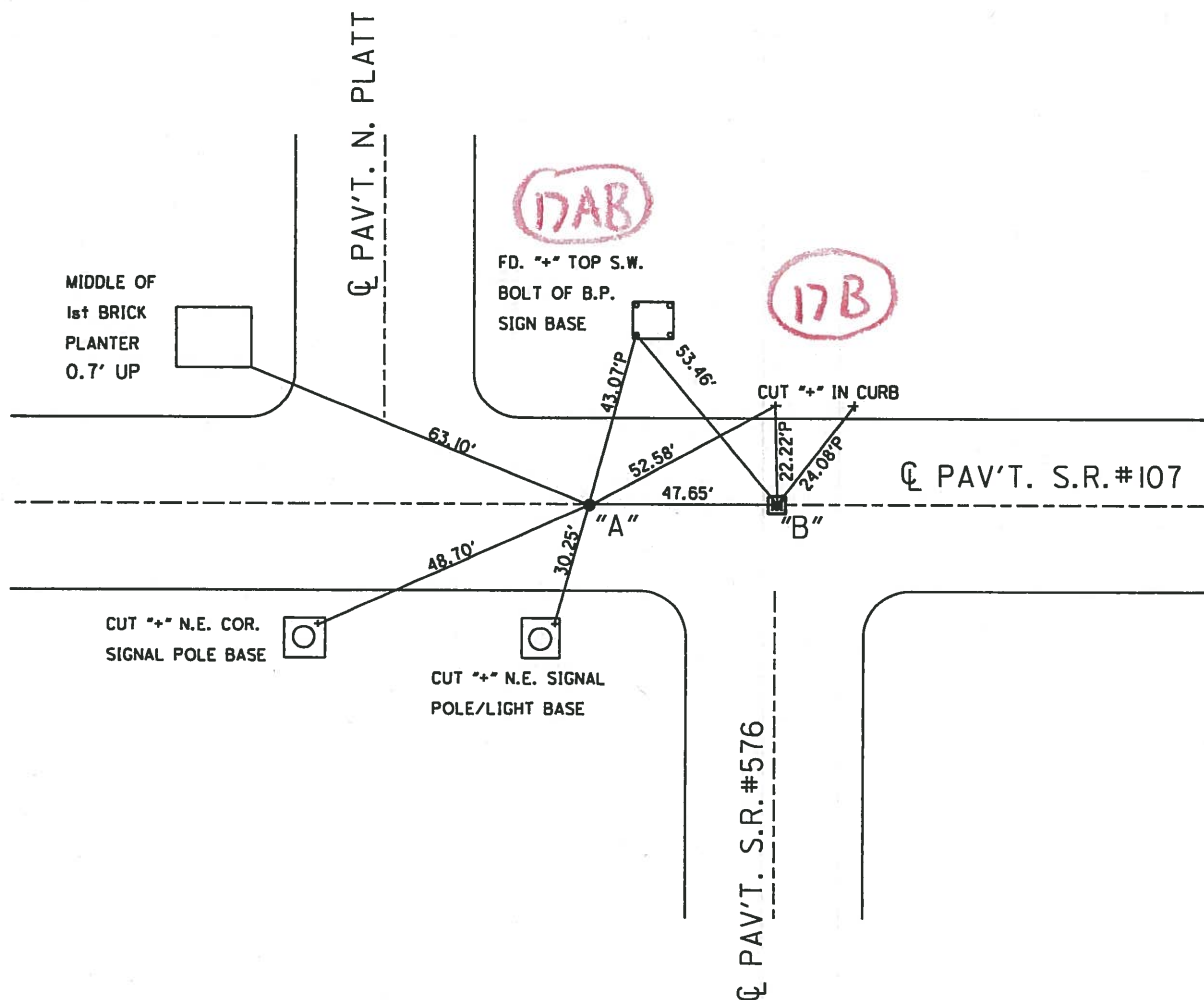
SECTION 11

T 7 N R 2 E

	PT."A"	PT."B"
TYPE MONUMENT	P.K. WASHER	MON. BOX W/ I. ROD
ON SURFACE - BELOW SURFACE		SURFACE
LEFT ϕ PAV'T - RIGHT	2' RT	2' RT
<u>22'</u> TOLT. EDGE PAVEMENT		ON ϕ SOUTH
S.L.M.	PT."A"443+00	PT."B"443+48



RESET MAG & WASHER
8/15/05 MB



O.D.O.T. DISTRICT 2 SURVEY OFFICE

PERSONNEL

REFERENCE NO. 18a-18b

SHEET _____ OF _____

NOTES BARNHISEL

H.C. CANTERBURY

R.C. BARNHISEL

DATE 10-18-02

WEATHER CLOUDY

TEMP. +43°

ROUTE S.R. #107

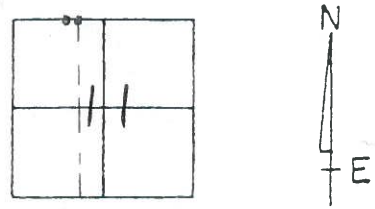
COUNTY WILLIAMS

TOWNSHIP SUPERIOR

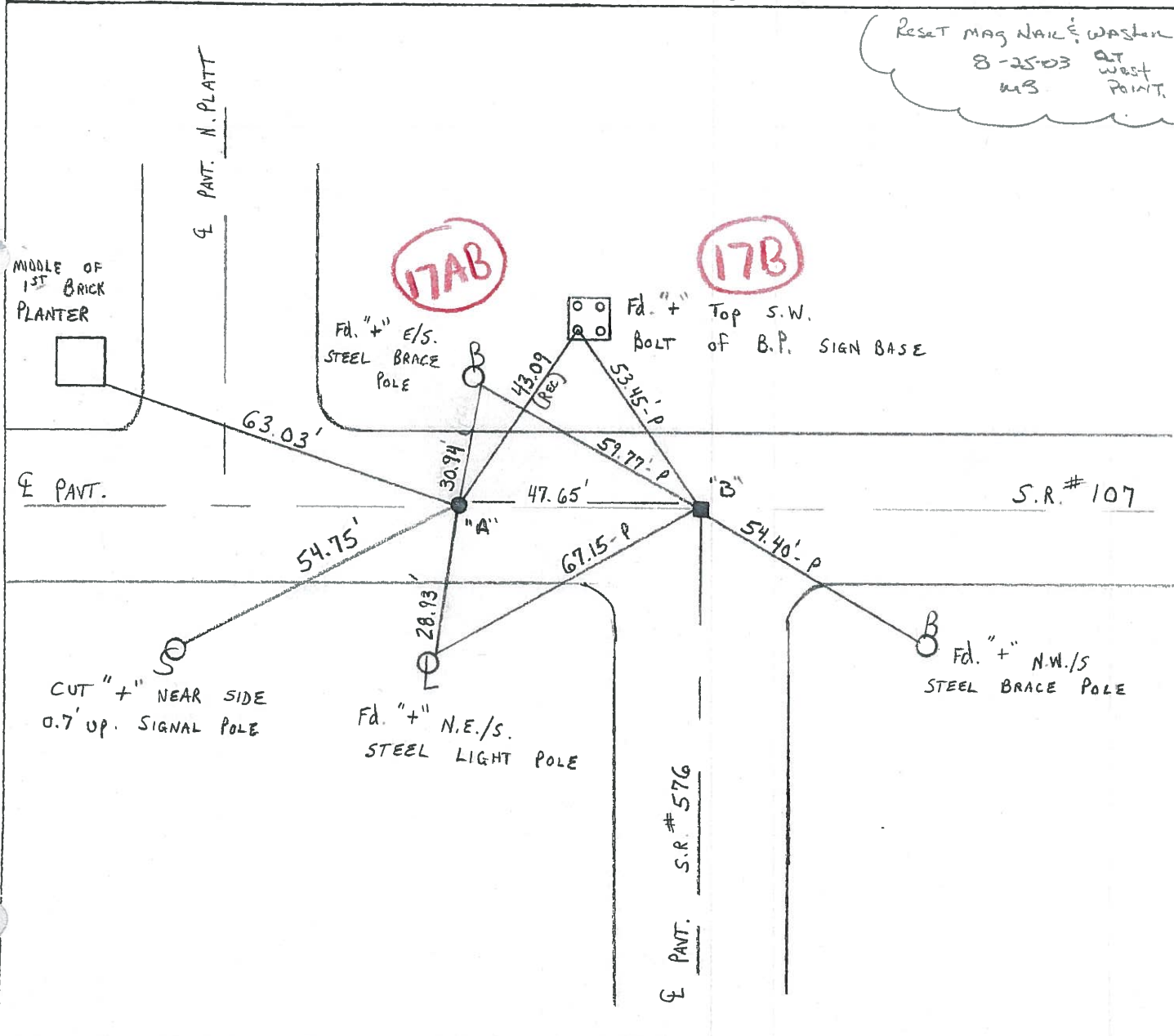
SECTION 11

T 7 N R 2 W

PT "A"	PT "B"
TYPE MONUMENT <u>P.K./WASHER</u>	<u>MON BOX</u>
ON SURFACE - BELOW <u>SURFACE</u>	<u>SURFACE</u>
LEFT - <u>¢</u> PAV'T. - RIGHT <u>Z RT.</u>	<u>Z RT.</u>
<u>22.0 TO LT. EDGE PAVEMENT</u>	<u>ON ¢ SOUTH</u>
S.L.M. <u>PT A 243+00</u>	<u>PT B 243+48 (8.39)</u>



Reset mag nail & washer
8-25-03 at
west
point.



O.D.O.T. DISTRICT 2 SURVEY OFFICE

PERSONNEL _____

REFERENCE NO. _____

SHEET 3 OF 5

NOTES LOEHRKE

H.C. ROMERO

DATE 6-16-93

ROUTE S.R. 107

R.C. CANTERBURY

WEATHER CLEAR

COUNTY William

CORDAS

TEMP. +65

TOWNSHIP Superior

SECTION 11

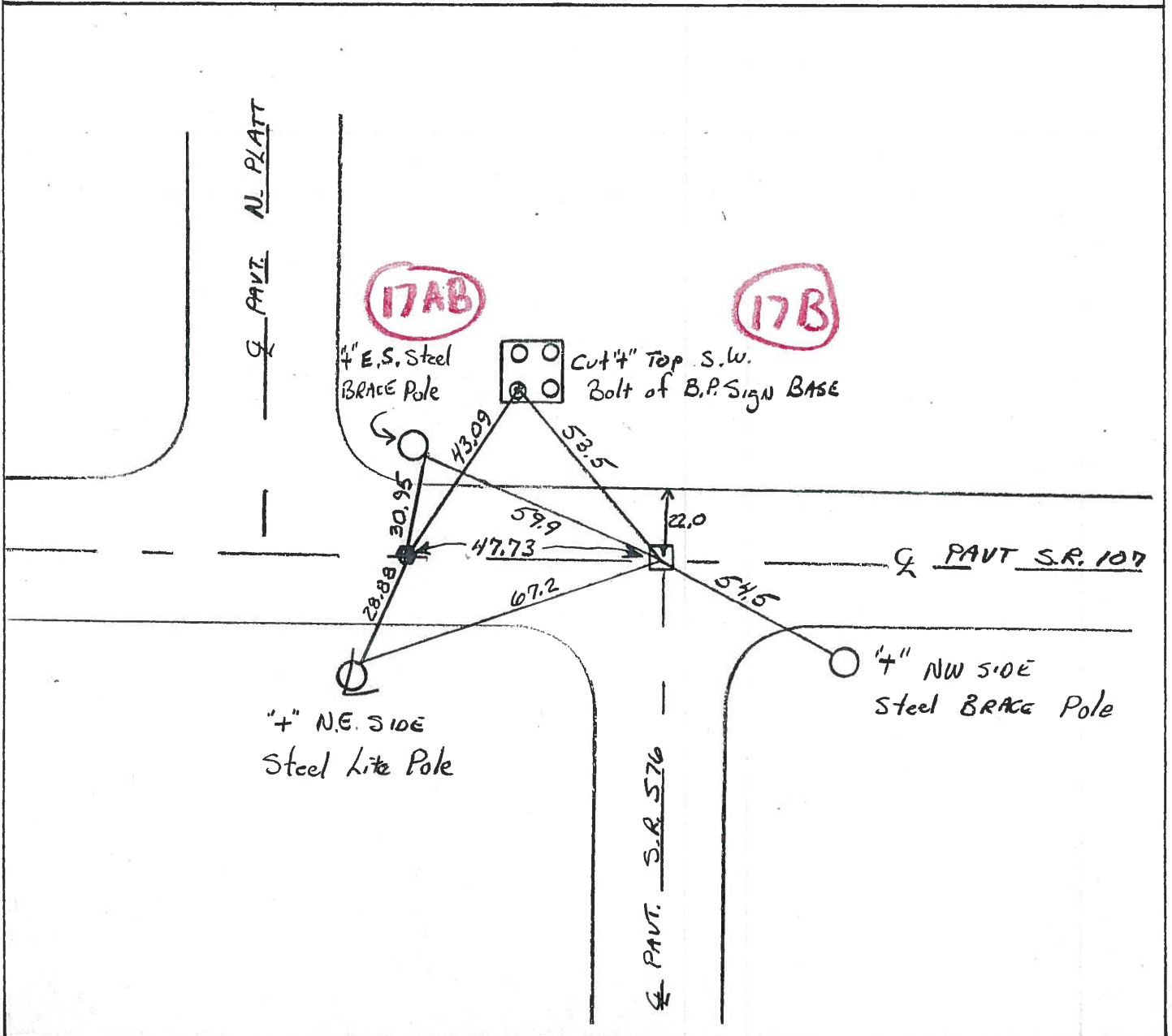
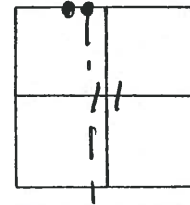
T 7 N R E W

TYPE MONUMENT ^{Set 6-5-93} P.K. NAIL / MON Box
 ON SURFACE - BELOW Yes 2" Down

~~LEFT~~ - Q PAV'T. - RIGHT _____

22.0 TO L+ EDGE PAVEMENT

S.L.M. Box 243+48



ODOT. DISTRICT 2 SURVEY OFFICE

SHEET 1 OF

County Williams S.R. 107

Date 17 Oct. 80

Township Superior

Weather Cloudy

Section 11

Temp. 57°

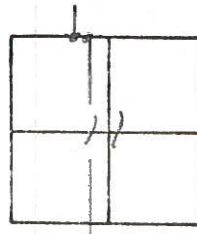
T_N, R_E

Personnel I. Stone

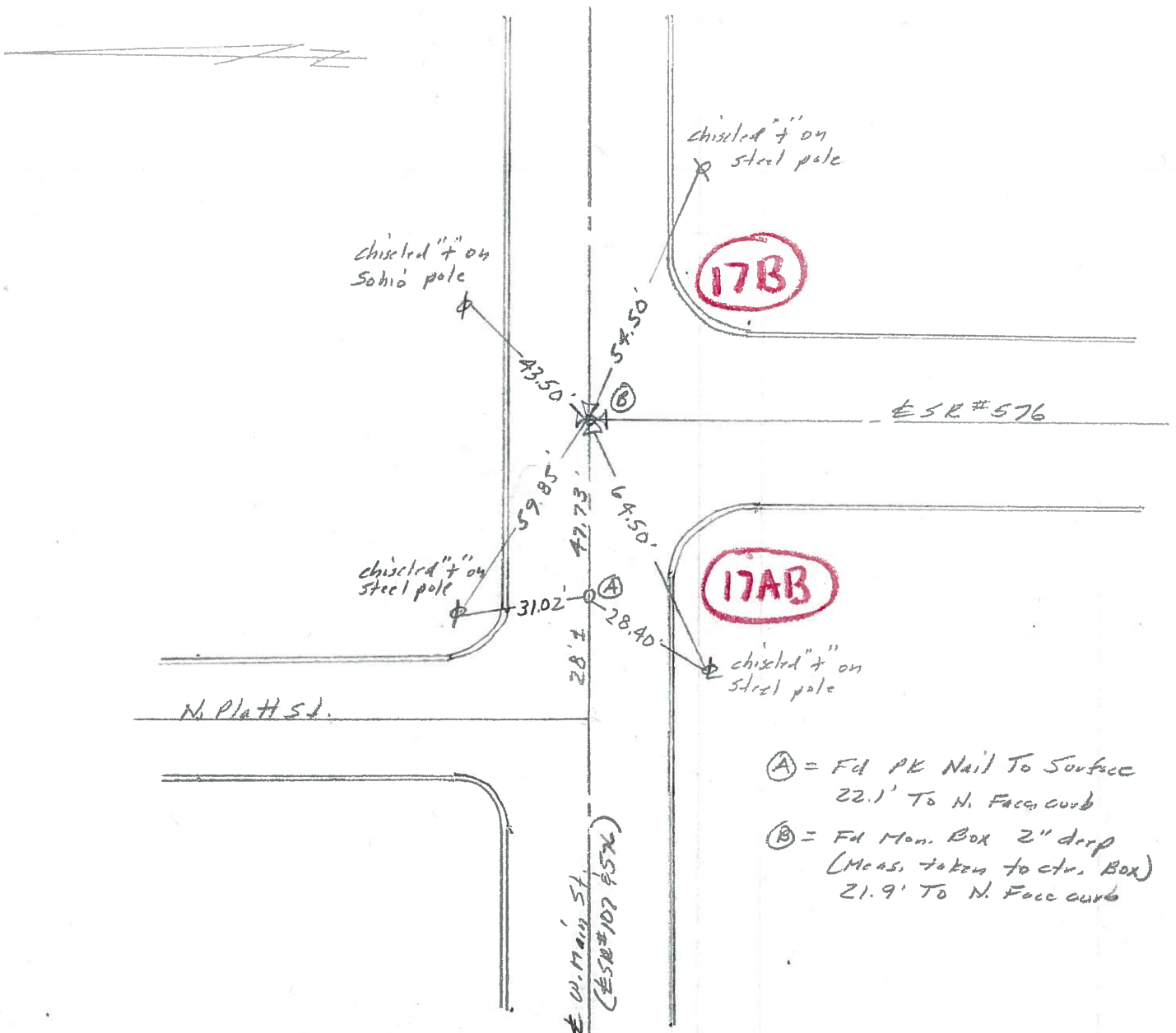
R. Michalale

P. Newser

J. Curtis



REF. NO.



- Ⓐ = Fd PK Nail To Surface
22.1' To N. Face curb
- Ⓑ = Fd Man. Box 2" deep
(Meas. taken to ctr. Box)
21.9' To N. Face curb