

O.D.O.T. DISTRICT 2 SURVEY OFFICE (USE ONLY)

PERSONNEL \_\_\_\_\_ REFERENCE NO. 17 D SHEET 9 OF 25

NOTES	<u>STONE</u>	DATE	<u>10/14/80</u>	ROUTE	<u>SR 107</u>
H.C.	<u>MICHALAK</u>	WEATHER	<u>CLOUDY</u>	COUNTY	<u>WILLIAMS</u>
R.C.	<u>NEUSER</u>	TEMP.	<u>59°</u>	TOWNSHIP	<u>SUPERIOR</u>
	<u>CURTIS</u>			SECTION	<u>11</u>
				T	<u>7 N</u>
				R	<u>2 E</u>

TYPE MONUMENT NAIL

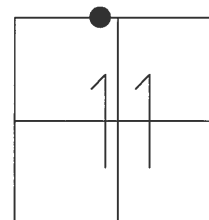
ON SURFACE - ~~BELOW~~ ON

LEFT - ☉ PAV'T - RIGHT ON

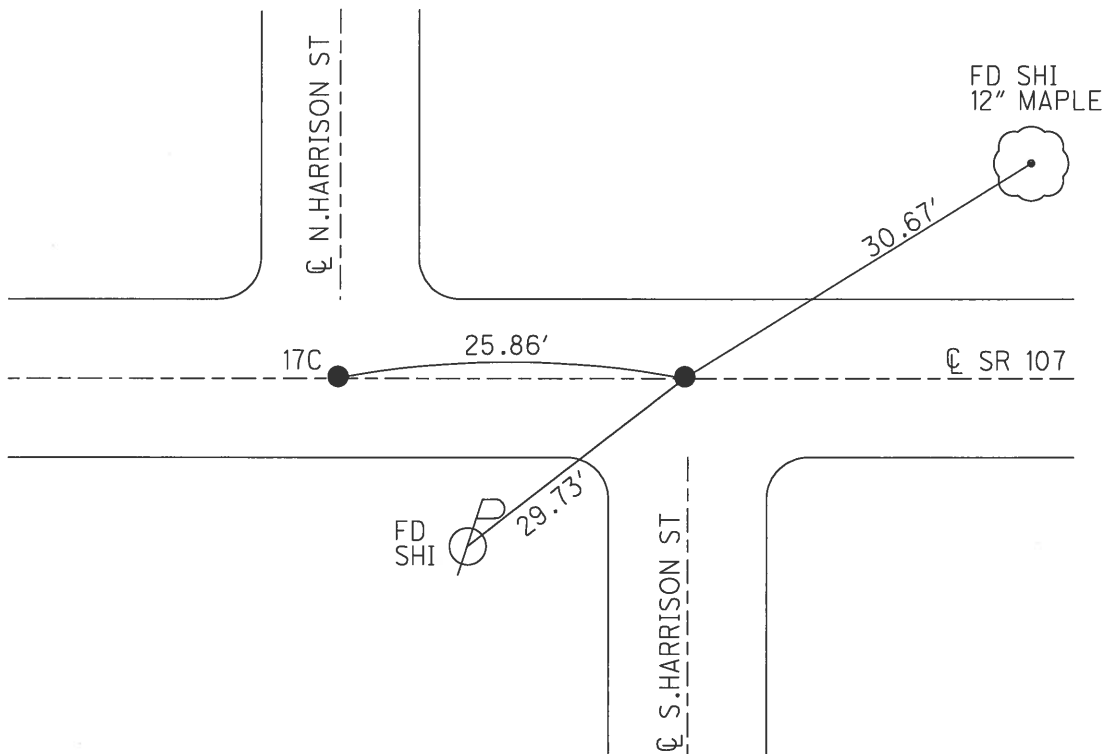
14.2' TO LT N.FACE CURB

S.L.M. 449+85±

Grid: Northing: \_\_\_\_\_ Easting: \_\_\_\_\_



RECORD:  
DNF POINT  
1993, 5/18/05  
12/29/14



O.D.O.T. DISTRICT 2 SURVEY OFFICE (USE ONLY)

PERSONNEL \_\_\_\_\_ REFERENCE NO. 17 D SHEET 5 OF 13

NOTES STONE DATE 10/14/80 ROUTE SR 107  
 H.C. MICHALAK WEATHER CLOUDY COUNTY WILLIAMS  
 R.C. NEUSER TEMP. 59° TOWNSHIP SUPERIOR  
CURTIS SECTION 11  
T 7 N R 2 E

TYPE MONUMENT NAIL

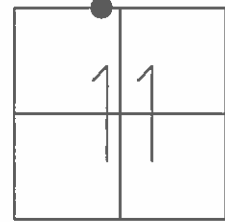
ON SURFACE - ~~BELOW~~ ON

LEFT - ☉ PAV'T - RIGHT ON

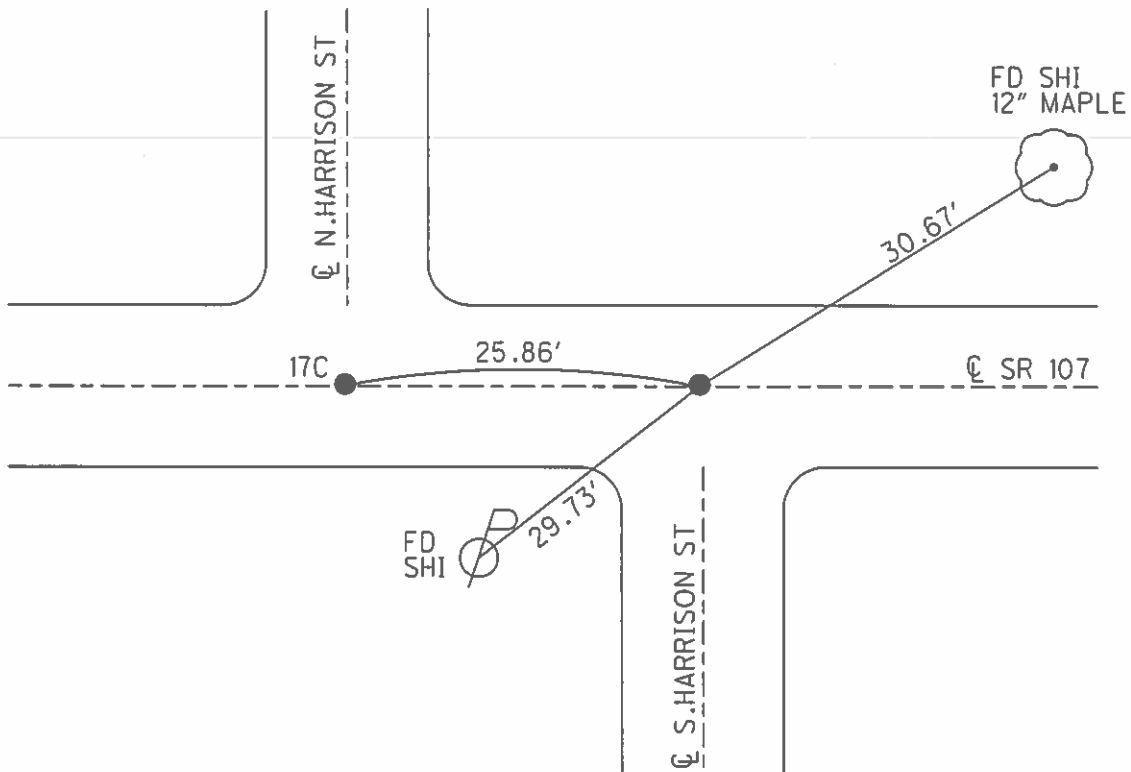
14.2' TO LT N.FACE CURB

S.L.M. 449+85±

Grid: Northing: \_\_\_\_\_ Easting: \_\_\_\_\_



RECORD:  
 DNF POINT  
 1993, 5/18/05



County Williams S.R. 107

Date 17 Oct. 80

Township Superior

Weather cloudy

Section 11

Temp. 59°

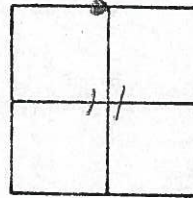
T N, R E

Personnel J. Stone

R. Michalak

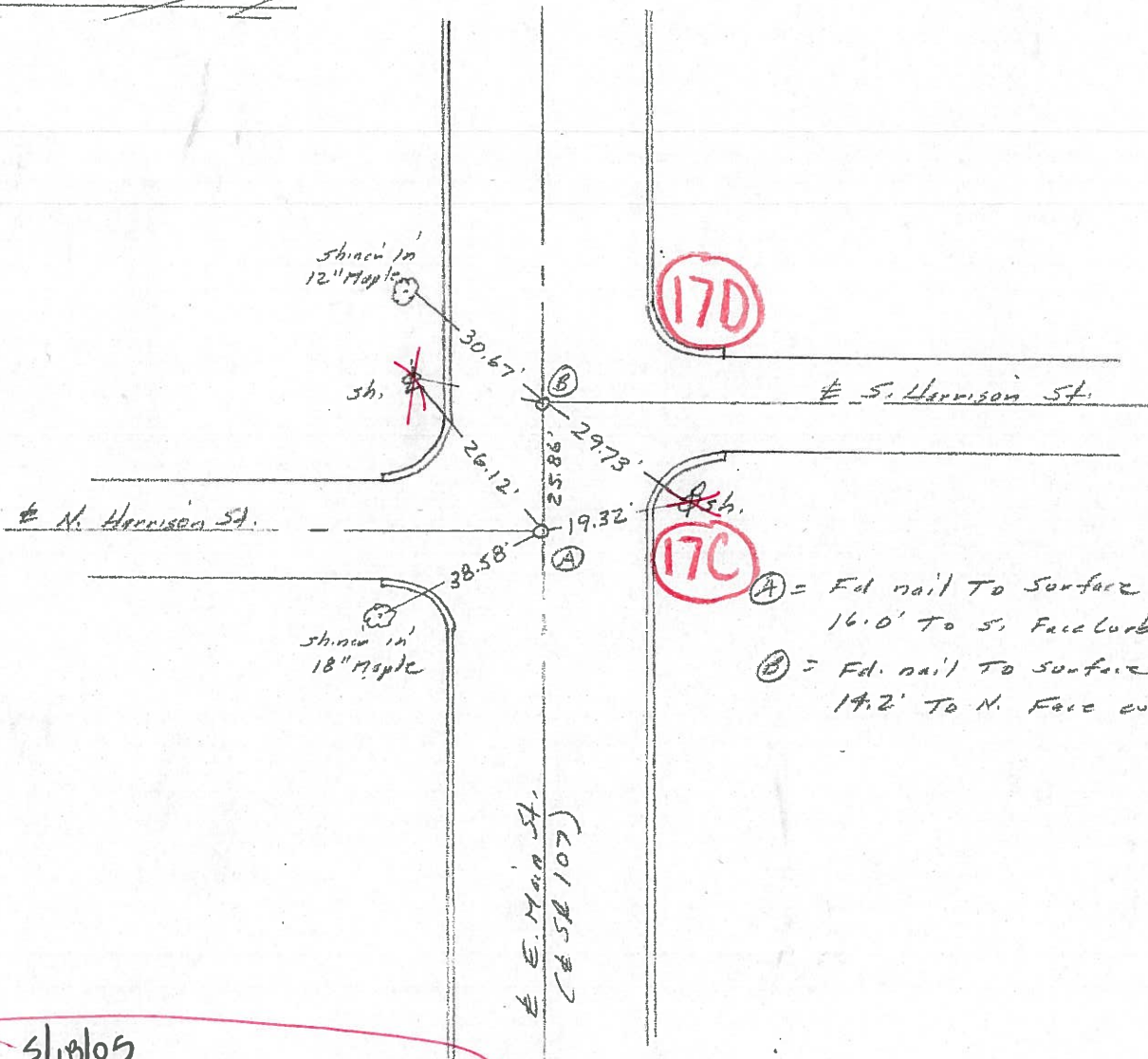
P. Neuser

D. Curtis



(8.51)

REF. NO.



- Ⓐ = Fd nail to surface 16.0' to S. Face curb (outside)
- Ⓑ = Fd nail to surface 14.2' to N. Face curb

5/18/05  
DID NOT FIELD during  
1993 Resurfacing Project