

O.D.O.T. DISTRICT 2 SURVEY OFFICE (USE ONLY)

PERSONNEL \_\_\_\_\_ REFERENCE NO. 17 E SHEET 8 OF 31

NOTES HOMAN \_\_\_\_\_ DATE 4/19/17 \_\_\_\_\_ ROUTE SR 107

H.C. HOMAN \_\_\_\_\_ WEATHER CLOUDY \_\_\_\_\_ COUNTY WILLIAMS

R.C. HELDMAN \_\_\_\_\_ TEMP. 65° \_\_\_\_\_ TOWNSHIP SUPERIOR

\_\_\_\_\_ SECTION 11

T 7 N R 2 E

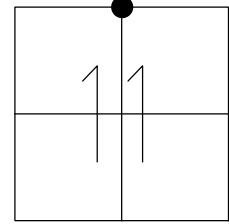
TYPE MONUMENT MAG/WASHER

ON SURFACE - ~~BELOW~~ ON

LEFT - ☉ PAV'T - RIGHT ON

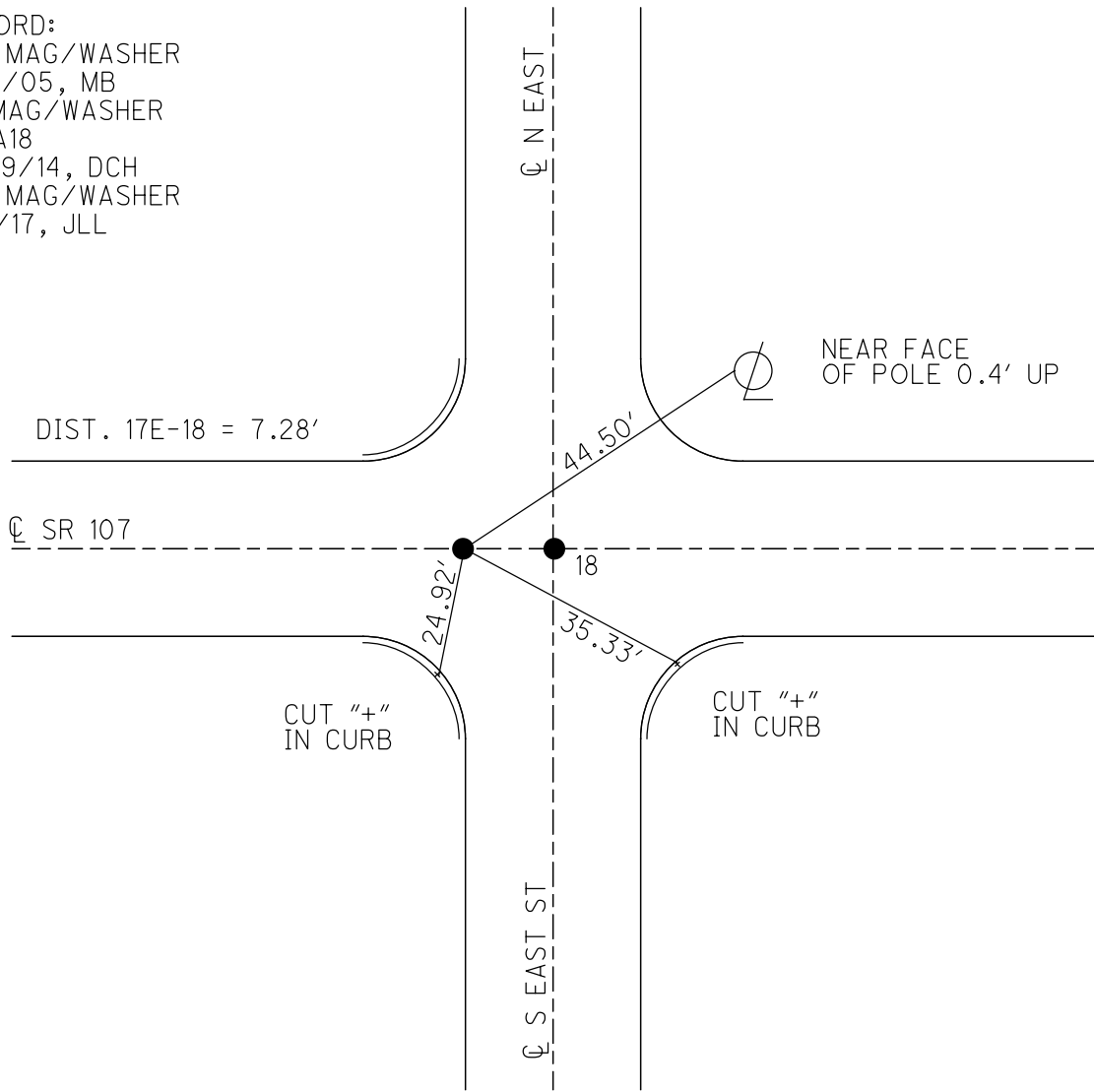
- TO - EDGE PAVEMENT

S.L.M. 453+00.31



GRID: NORTHING: 706387.519 EASTING: 1393080.379

RECORD:  
 SET MAG/WASHER  
 8/15/05, MB  
 FD MAG/WASHER  
 REFA18  
 12/29/14, DCH  
 SET MAG/WASHER  
 8/7/17, JLL

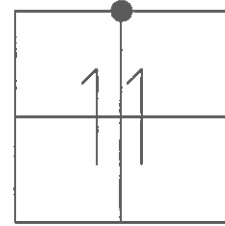


O.D.O.T. DISTRICT 2 SURVEY OFFICE (USE ONLY)

PERSONNEL \_\_\_\_\_ REFERENCE NO. 17 E SHEET 6 OF 13

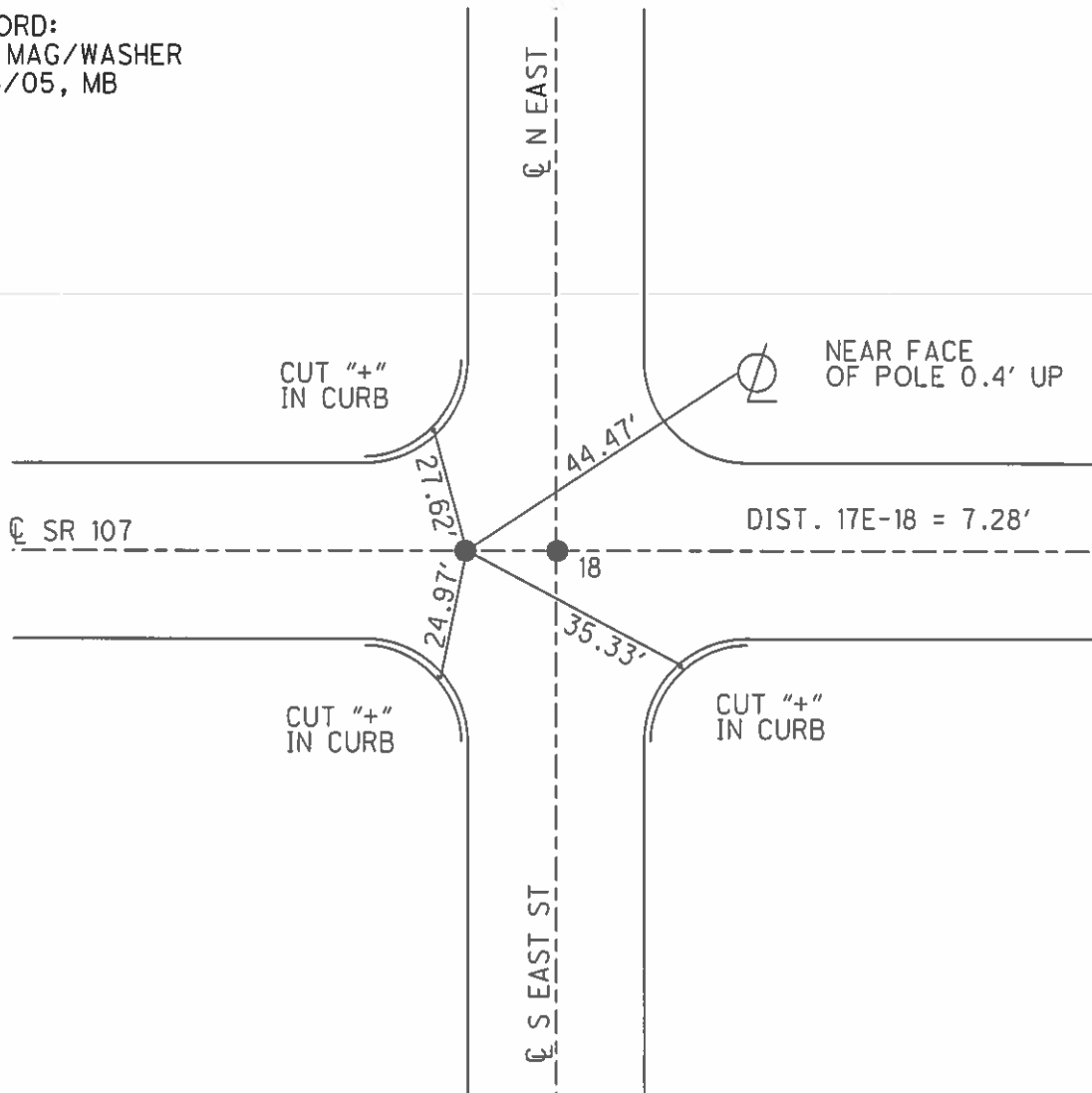
NOTES BARNHISEL DATE 5/18/05 ROUTE SR 576  
 H.C. CANTERBURY WEATHER PT CLOUDY COUNTY WILLIAMS  
 R.C. MIKLOVIC TEMP. 50° TOWNSHIP SUPERIOR  
 SECTION 11  
T 7 N R 2 E

TYPE MONUMENT \_\_\_\_\_ P.K./WASHER \_\_\_\_\_  
 ON SURFACE - ~~BELOW~~ ON \_\_\_\_\_  
 LEFT - ☉ PAV'T - RIGHT \_\_\_\_\_ ON \_\_\_\_\_  
 - TO - EDGE PAVEMENT \_\_\_\_\_  
 S.L.M. 453+06



GRID: NORTHING: \_\_\_\_\_ EASTING: \_\_\_\_\_

RECORD:  
 SET MAG/WASHER  
 8/15/05, MB



O.D.O.T. DISTRICT 2 SURVEY OFFICE

PERSONNEL

REFERENCE NO. 18

SHEET 5 OF 10

NOTES BARNHISEL

DATE 5/18/05

ROUTE S.R.#576

H.C. CANTERBURY

WEATHER PT. CLOUDY

COUNTY WILLIAMS

R.C. MIKLOVIC

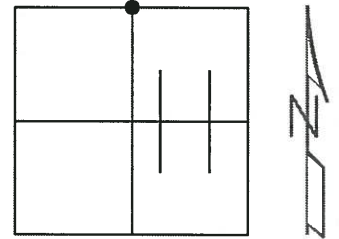
TEMP. +50°

TOWNSHIP SUPERIOR

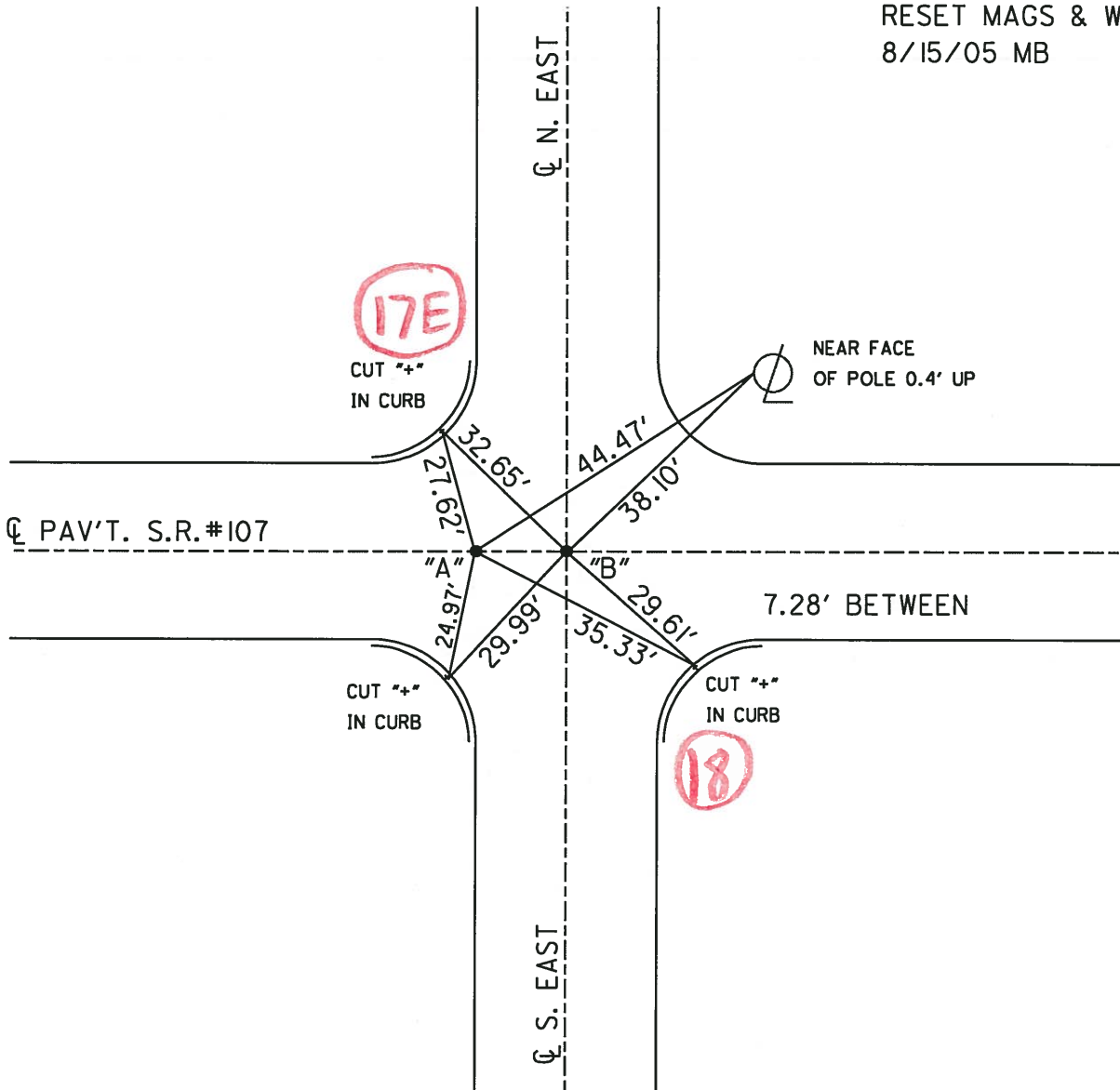
SECTION 11

T 7 N R 2 E

	PT. "A"	PT. "B"
TYPE MONUMENT	<u>P.K. WASHER</u>	<u>1.5' ROD</u>
ON SURFACE - BELOW SURFACE	<u>5" DOWN</u>	
LEFT - <u>☉</u> PAV'T - RIGHT <u>☉</u>		
<u>    </u> TO <u>    </u> EDGE PAVEMENT		
S.L.M. <u>453+06</u>	<u>"B" ON ☉ SOUTH</u>	



RESET MAGS & WASHERS  
8/15/05 MB



# O.D.O.T. DISTRICT 2 SURVEY OFFICE

PERSONNEL \_\_\_\_\_

REFERENCE NO. \_\_\_\_\_

SHEET 4 OF 5

NOTES LOHRKE

H.C. ROMETO

R.C. CANTERBURY

DATE 6-16-93

WEATHER A Cloudy

TEMP. +80

ROUTE S.R. 576

COUNTY Williams

TOWNSHIP Superior

SECTION 11

T7 N R 2 E

TYPE MONUMENT 3/4" Iron Rod - P.K.

Reset P.K. Nails  
8-8-93

~~ON~~ SURFACE - BELOW 3" Deep - SURFACE

LEFT - ~~CL~~ PAV'T. - RIGHT Yes

TO EDGE PAVEMENT

S.L.M. 453104

(8.57)

