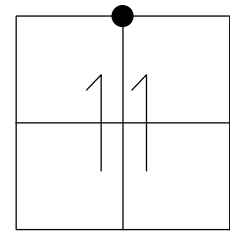


O.D.O.T. DISTRICT 2 SURVEY OFFICE (USE ONLY)

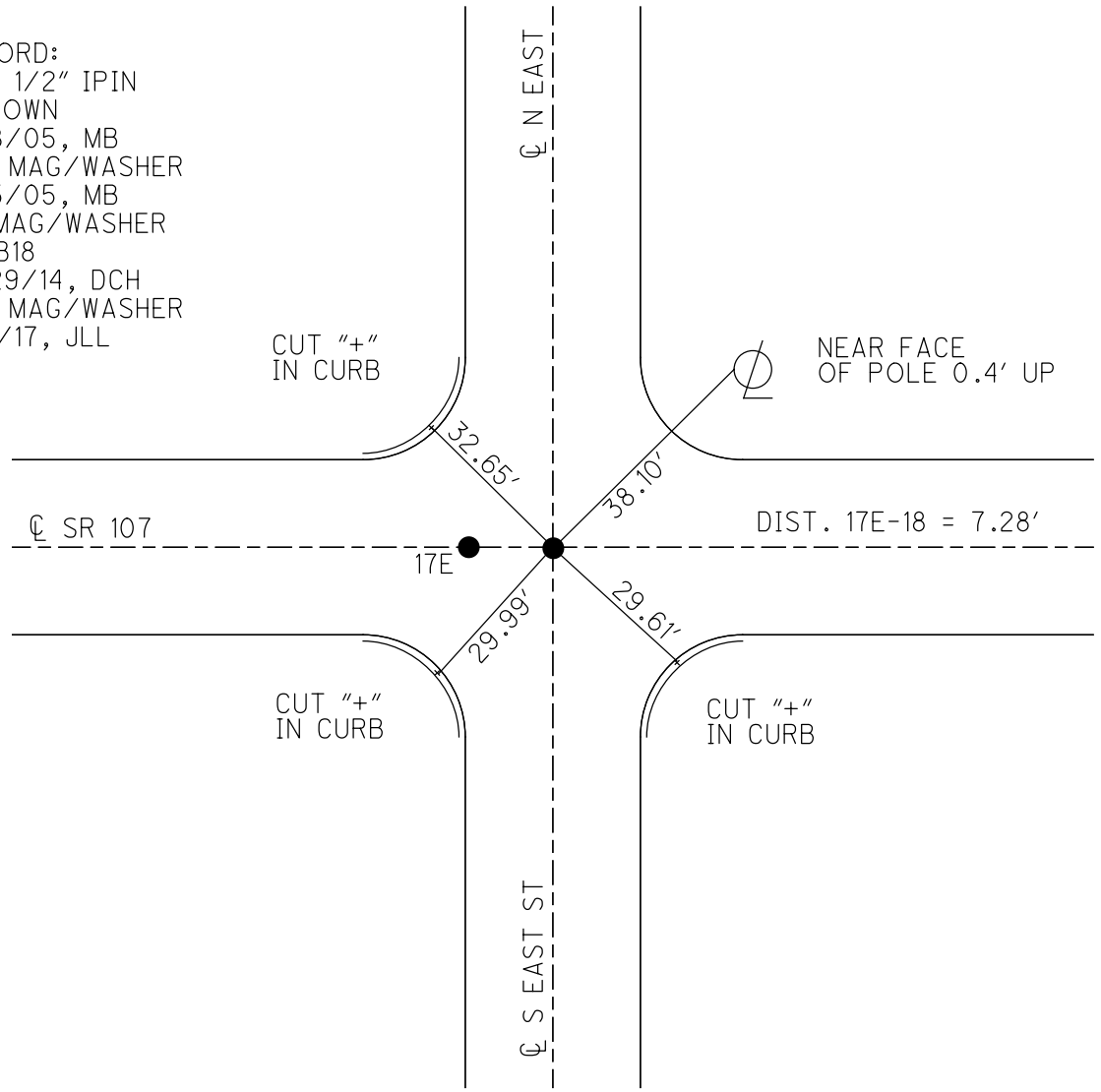
PERSONNEL _____ REFERENCE NO. 18 SHEET 9 OF 31
 NOTES HOMAN _____ DATE 4/19/17 ROUTE SR 107
 H.C. HOMAN _____ WEATHER CLOUDY COUNTY WILLIAMS
 R.C. HELDMAN _____ TEMP. 65° TOWNSHIP SUPERIOR
 _____ SECTION 11
 _____ T 7 N R 2 E

TYPE MONUMENT MAG/WASHER
~~ON SURFACE~~ - BELOW ON
 LEFT - ☉ PAV'T - RIGHT ON
- TO - EDGE PAVEMENT
 S.L.M. 453+07.61



GRID: NORTHING: 706387.387 EASTING: 1393087.681

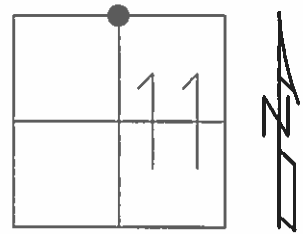
RECORD:
 FD 1 1/2" IPIN
 5" DOWN
 5/18/05, MB
 SET MAG/WASHER
 8/15/05, MB
 FD MAG/WASHER
 REFB18
 12/29/14, DCH
 SET MAG/WASHER
 8/7/17, JLL



O.D.O.T. DISTRICT 2 SURVEY OFFICE (USE ONLY)

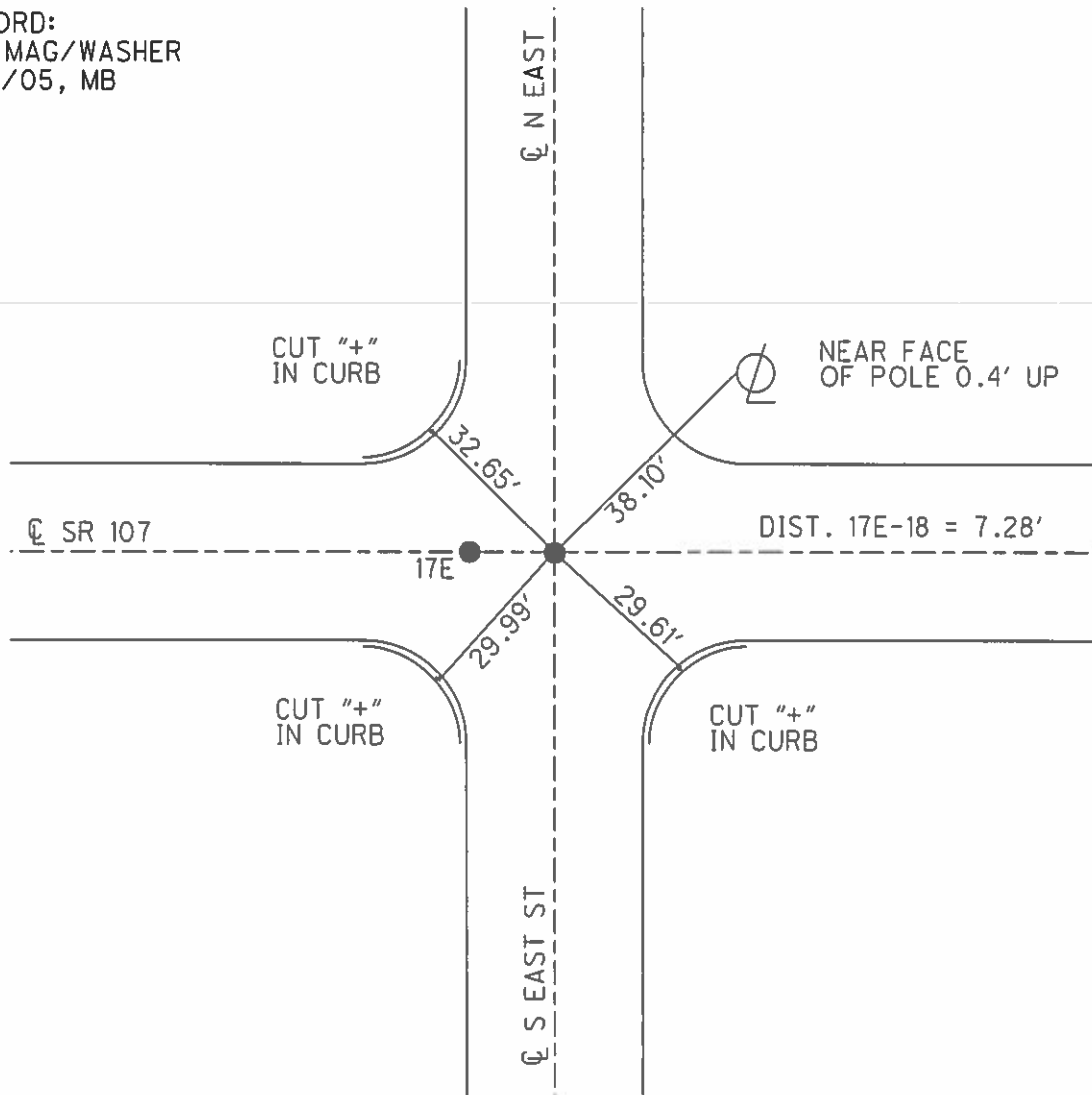
PERSONNEL _____ REFERENCE NO. 18 SHEET 7 OF 13
 NOTES BARNHESEL DATE 5/18/05 ROUTE SR 576
 H.C. CANTERBURY WEATHER PT CLOUDY COUNTY WILLIAMS
 R.C. MIKLOVIC TEMP. 50° TOWNSHIP SUPERIOR
 SECTION 11
T 7 N R 2 E

TYPE MONUMENT 1 1/2" IPIN
~~ON SURFACE~~ - BELOW 5"
 LEFT - ☉ PAV'T - RIGHT ON
- TO - EDGE PAVEMENT
 S.L.M. 453+13



GRID: NORTHING: _____ EASTING: _____

RECORD:
 SET MAG/WASHER
 8/15/05, MB



O.D.O.T. DISTRICT 2 SURVEY OFFICE

PERSONNEL

REFERENCE NO. 18

SHEET 5 OF 10

NOTES BARNHISEL

DATE 5/18/05

ROUTE S.R. #576

H.C. CANTERBURY

WEATHER PT. CLOUDY

COUNTY WILLIAMS

R.C. MIKLOVIC

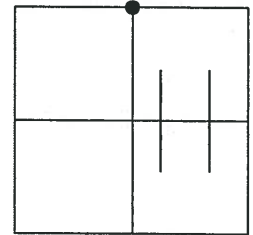
TEMP. +50°

TOWNSHIP SUPERIOR

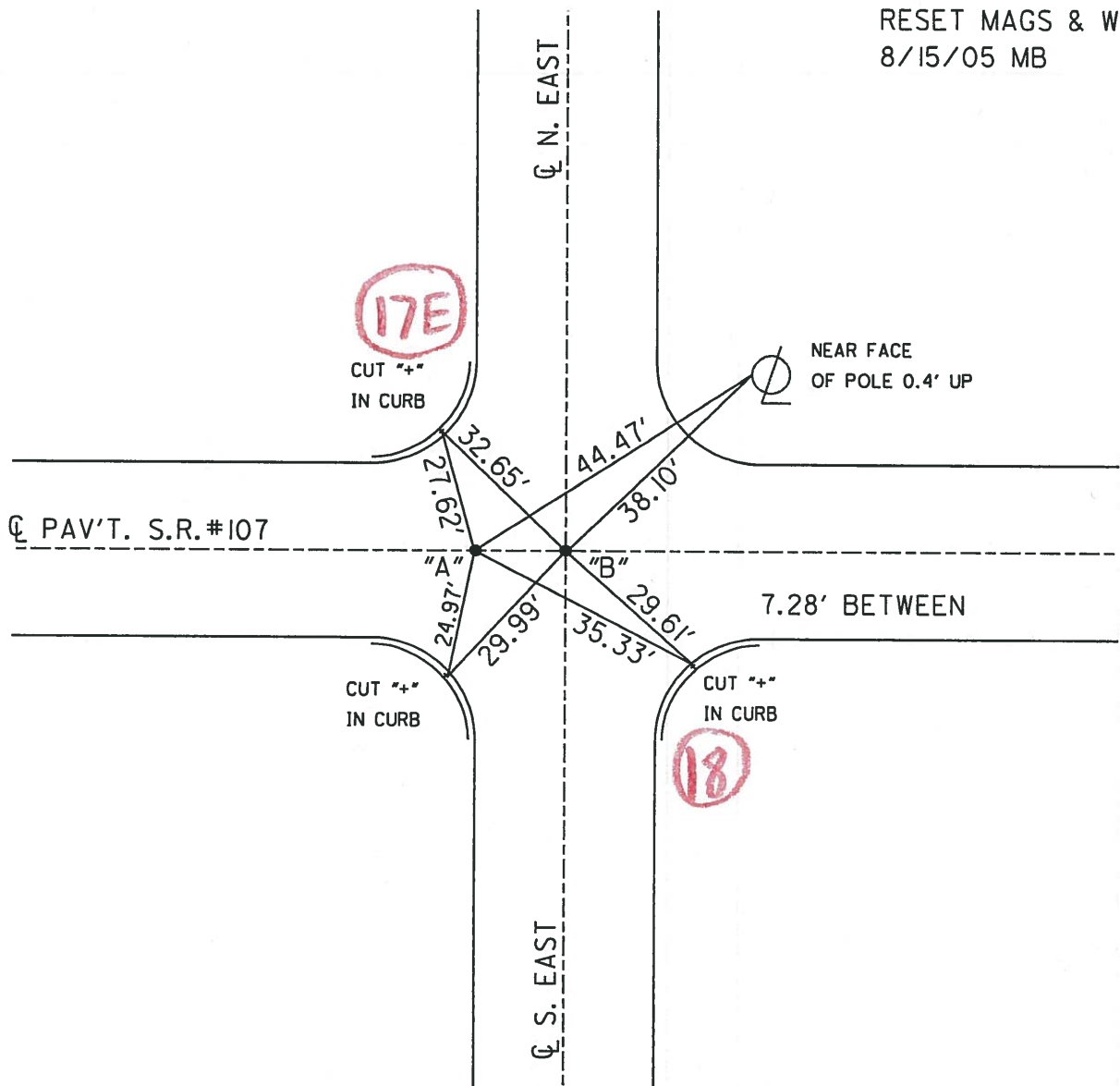
SECTION 11

T 7 N R 2 E

TYPE MONUMENT	<u>P.K. WASHER</u>	PT. "A"	PT. "B"
ON SURFACE - BELOW SURFACE	<u>5" DOWN</u>		<u>1.5' ROD</u>
LEFT - <u>☉</u> PAV'T - RIGHT <u>☉</u>			<u>☉</u>
<u> </u> TO <u> </u> EDGE PAVEMENT			
S.L.M. <u>453+06</u>	<u>"B" ON ☉ SOUTH</u>		



RESET MAGS & WASHERS
8/15/05 MB



O.D.O.T. DISTRICT 2 SURVEY OFFICE

PERSONNEL _____

REFERENCE NO. _____

SHEET 4 OF 5

NOTES LOEHRKE

H.C. ROMISTO

R.C. CANTERBURY

DATE 6-16-93

WEATHER Pt Cloudy

TEMP. +80

ROUTE S.R. 576

COUNTY Williams

TOWNSHIP Superior

SECTION 11

T7 N R 2 E

TYPE MONUMENT 3/4" A IRON Rod - P.K.

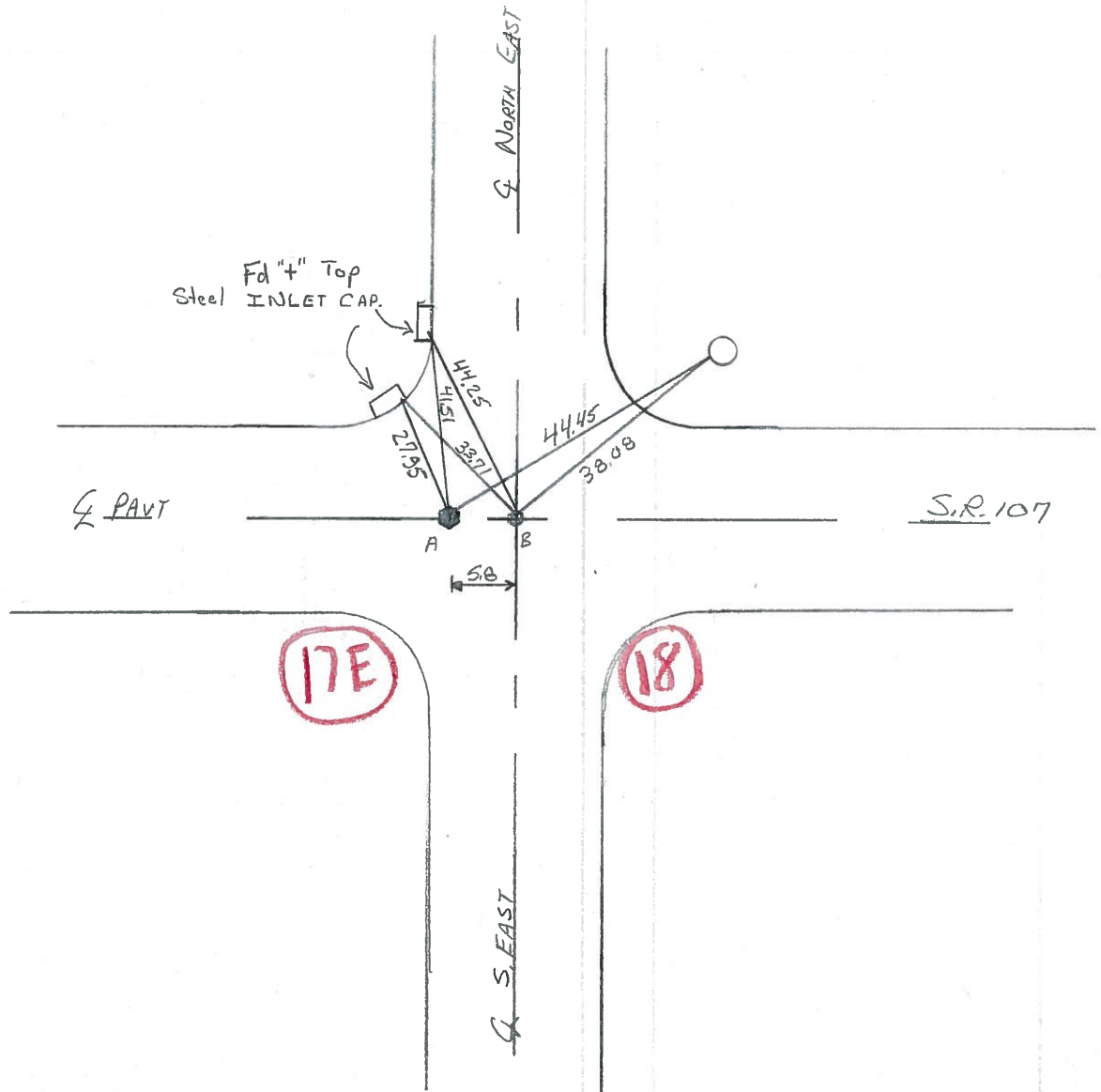
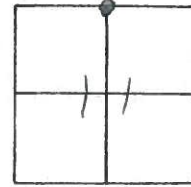
~~ON~~ SURFACE - BELOW 3" Deep - SURFACE

LEFT - PAV'T. - RIGHT Yes

TO EDGE PAVEMENT

S.L.M. 453104 (8.57)

Reset P.K. NAILS
8-8-93



County Williams S.R. 107

Date 14 Oct. 80

Township Superior

Weather Cloudy

Section 11

Temp. 57°

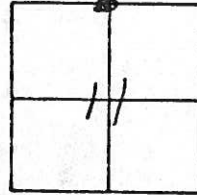
T N, R E

Personnel 1. Stone

R. Michalak

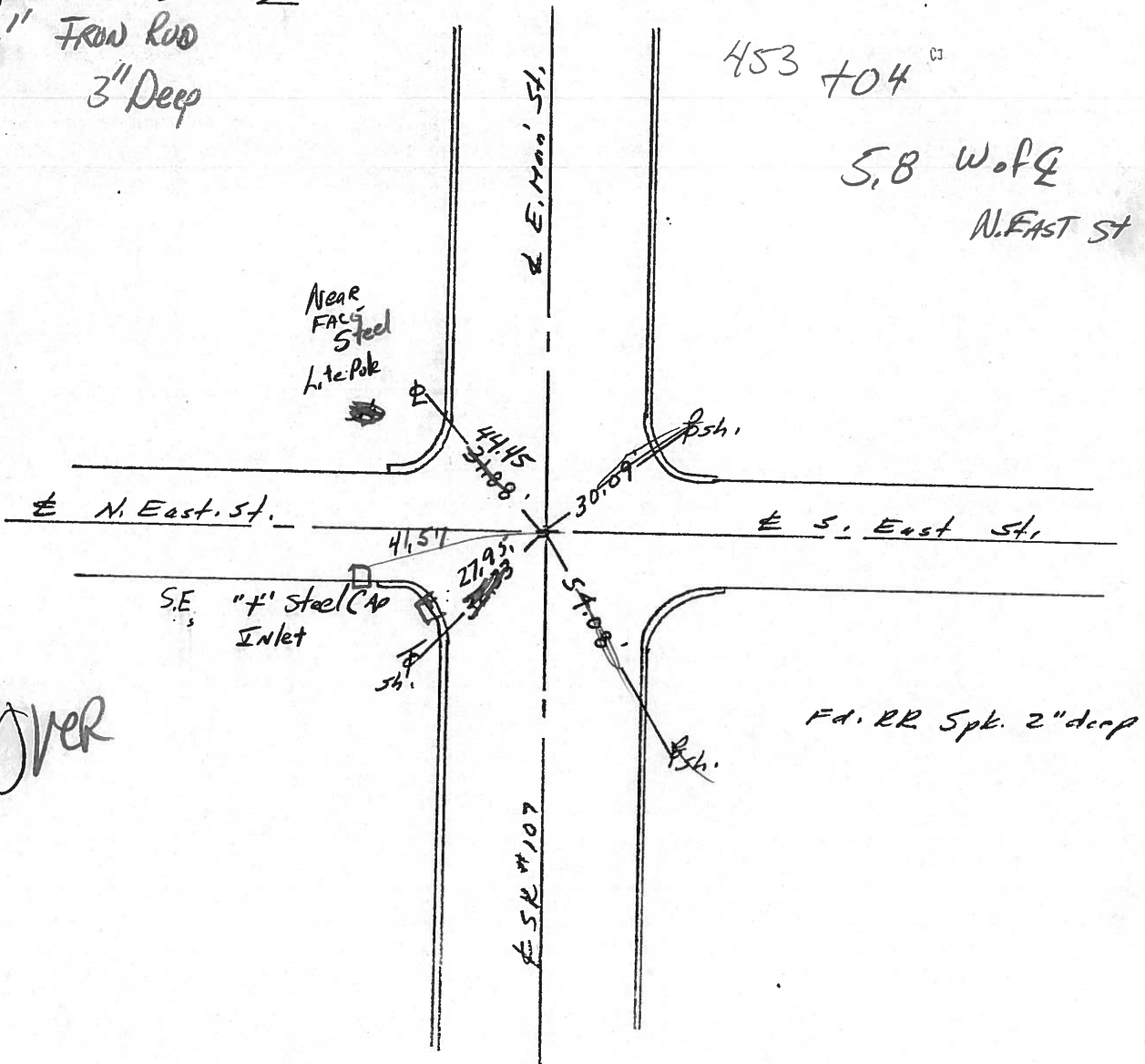
P. Neuser

D. Curtis



REF. NO. 18

3/4" Iron Rod
3" Deep



Over

County Williams S.R. 107

Date 14 Oct. 80

Township Superior

Weather Cloudy

Section 11

Temp. 57°

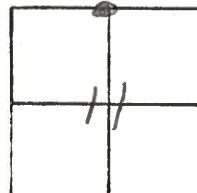
T_N, R_E

Personnel 1. Stone

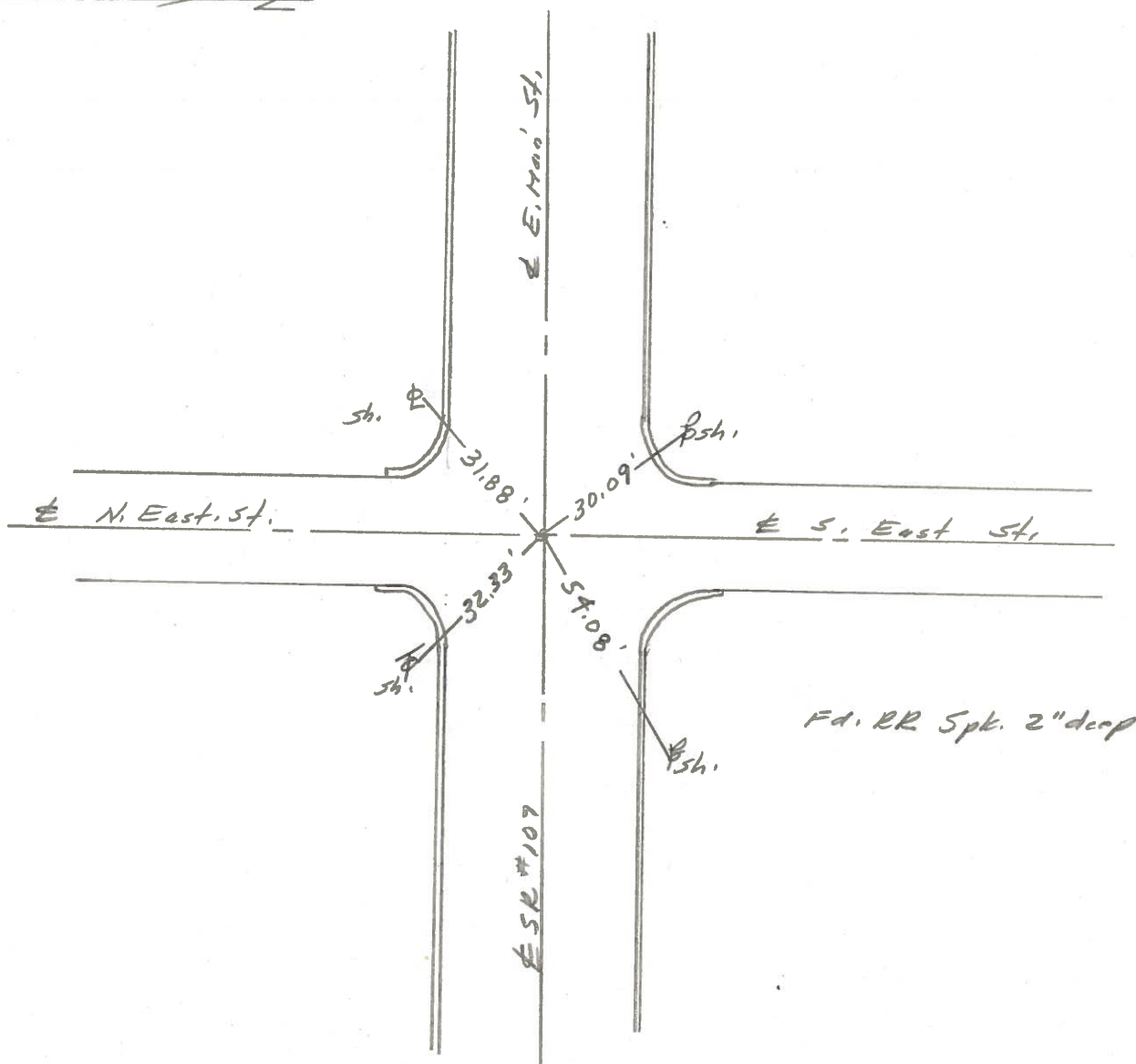
R. Michalak

P. Neuser

D. Curtis



REF. NO. 18



PERSONNEL TITLE PERSONNEL TITLE

Red Beach

COUNTY William

DATE 17 Mar '69

Newcomb

S. R. 107

WEATHER

Knape

SEC. 8.95-11.05

TEMP.

Wise

DESCRIPTION

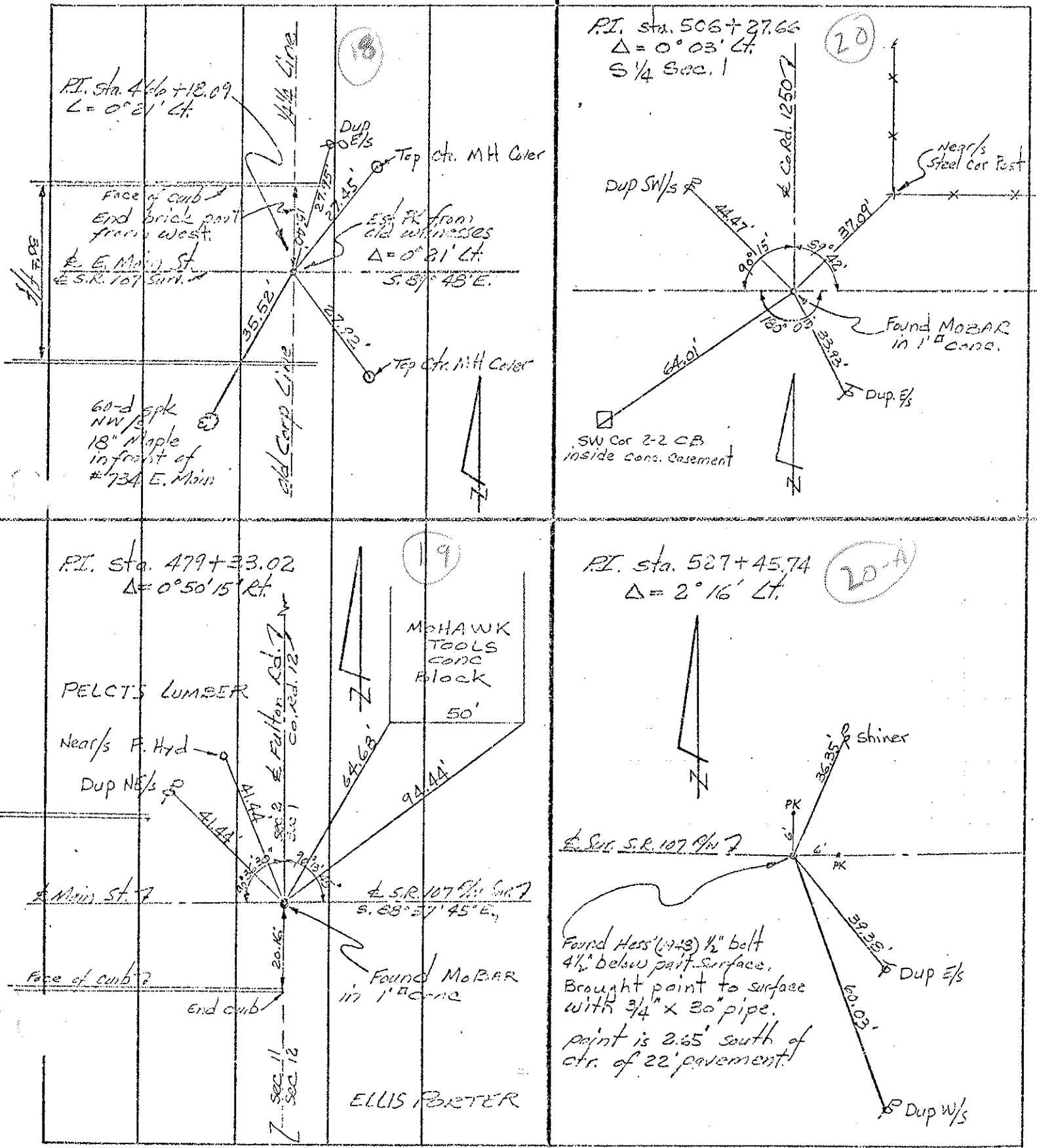
CONTROL POINTS

JOB NO. 02734

LEFT

CENTER LINE

RIGHT



P.I. Sta. 466+18.09
 $\Delta = 0^{\circ} 21' \text{ Lt.}$

P.I. Sta. 506+27.66
 $\Delta = 0^{\circ} 03' \text{ Lt.}$
S 1/4 Sec. 1

Face of curb
End brick part
from West
E. E. Main St.
E.S.R. 107 Surr.

Dup OE/s
Top ctr. MH Cover

Est. PK from
old witnesses
 $\Delta = 0^{\circ} 21' \text{ Lt.}$
S. 87^{\circ} 48' E.

Dup SW/s

Near/s
Steel Car Post

60-d spk
NW 1/4
18" Maple
in front of
#734 E. Main

Top ctr. MH Cover

SW Cor 2-2 CB
inside conc. Casement

P.I. Sta. 479+33.02
 $\Delta = 0^{\circ} 50' 15" \text{ Rt.}$

P.I. Sta. 527+45.74
 $\Delta = 2^{\circ} 16' \text{ Lt.}$

PELCTS LUMBER

MOHAWK
TOOLS
CONC
Block
50'

Near/s F. Hyd

Shiner

Dup NE/s

E. Main St.

E.S.R. 107 Surr.
S. 88^{\circ} 57' 45" E.

Face of curb?

end curb

Found MoBAR
in 1" conc

Found Hess (1943) 1/2" bolt
4 1/2" below part surface.
Brought point to surface
with 3/4" x 30" pipe.
point is 2.65' south of
ctr. of 22' pavement!

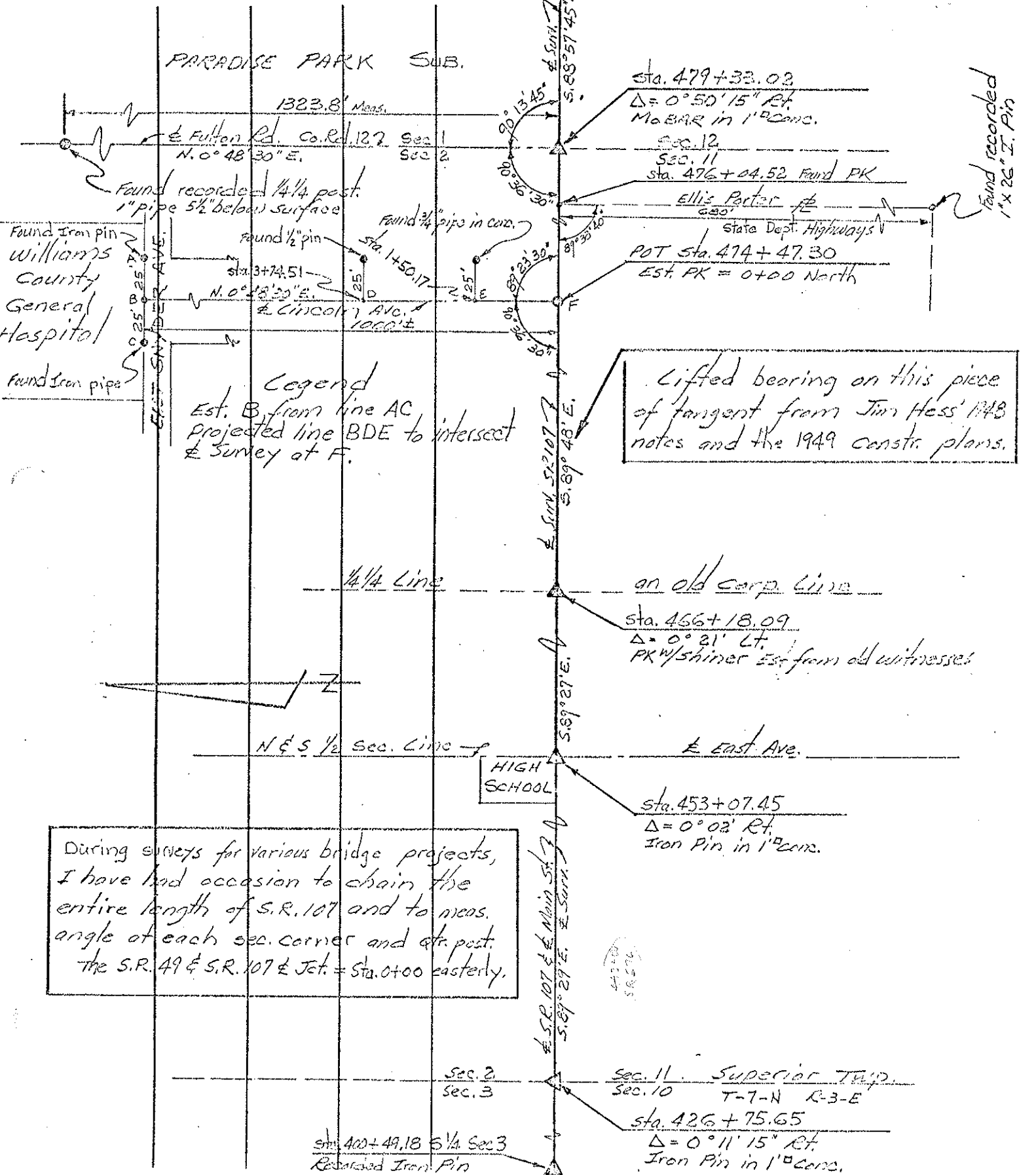
ELLIS PORTER

Dup W/s

PERSONNEL TITLE PERSONNEL TITLE
 Red Beach _____
 Newcomb _____
 Knape _____
 Wise _____

COUNTY Williams DATE Nov. 1968
 S. R. 107 WEATHER _____
 SEC. 896-11.05 TEMP. _____

DESCRIPTION ALIGNMENT JOB NO. 02734



During surveys for various bridge projects, I have had occasion to chain the entire length of S.R. 107 and to meas. angle of each sec. corner and str. post. the S.R. 49 & S.R. 107 & Jct. = Sta. 0+00 easterly.

Lifted bearing on this piece of fangert from Jim Hess' 1948 notes and the 1949 constr. plans.

an old carp. line
 sta. 456+18.09
 Δ = 0° 21' Lt.
 PK w/shiner Est. from old witnesses

sta. 453+07.45
 Δ = 0° 02' Rt.
 Iron Pin in 1\" corr.

Sec. 11 Superior Twp.
 Sec. 10 T-7-N R-3-E
 sta. 426+75.65
 Δ = 0° 11' 15" Rt.
 Iron Pin in 1\" corr.

sta. 400+49.18 5 1/4 Sec 3
 Restored Iron Pin