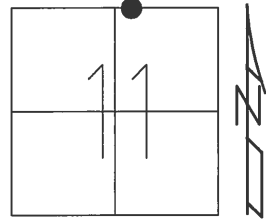


O.D.O.T. DISTRICT 2 SURVEY OFFICE (USE ONLY)

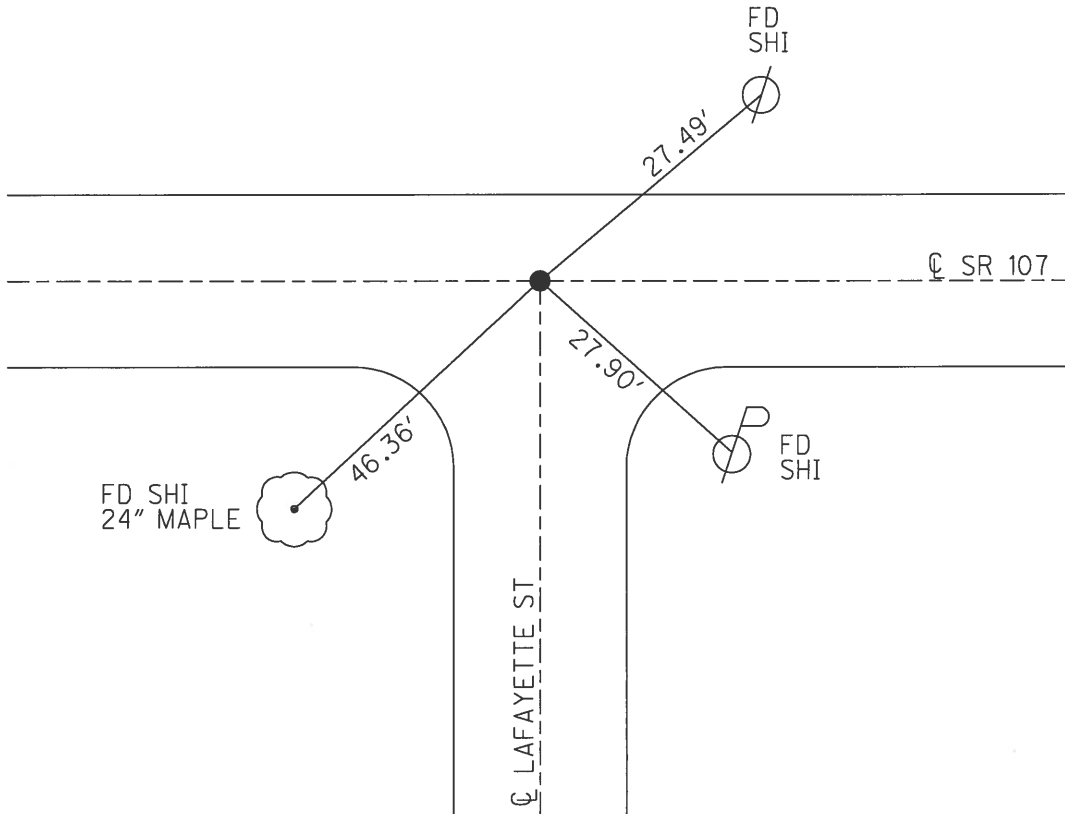
PERSONNEL \_\_\_\_\_ REFERENCE NO. 18 A SHEET 12 OF 25  
 NOTES STONE DATE 10/14/80 ROUTE SR 107  
 H.C. MICHALAK WEATHER CLOUDY COUNTY WILLIAMS  
 R.C. NEUSER TEMP. 58° TOWNSHIP SUPERIOR  
 \_\_\_\_\_ SECTION 11  
 \_\_\_\_\_ T 7 N R 2 E

TYPE MONUMENT NAIL  
 ON SURFACE - ~~BELOW~~ ON \_\_\_\_\_  
 LEFT - ☉ PAV'T - RIGHT ON \_\_\_\_\_  
15.4' TO N EDGE PAVEMENT  
 S.L.M. 456+58±



Grid: Northing: \_\_\_\_\_ Easting: \_\_\_\_\_

RECORD:  
 DNF, 5/18/05  
 12/29/14

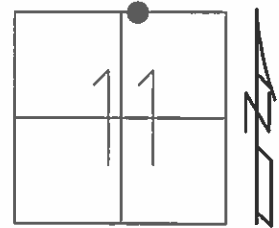


O.D.O.T. DISTRICT 2 SURVEY OFFICE (USE ONLY)

PERSONNEL \_\_\_\_\_ REFERENCE NO. 18 A SHEET 8 OF 13

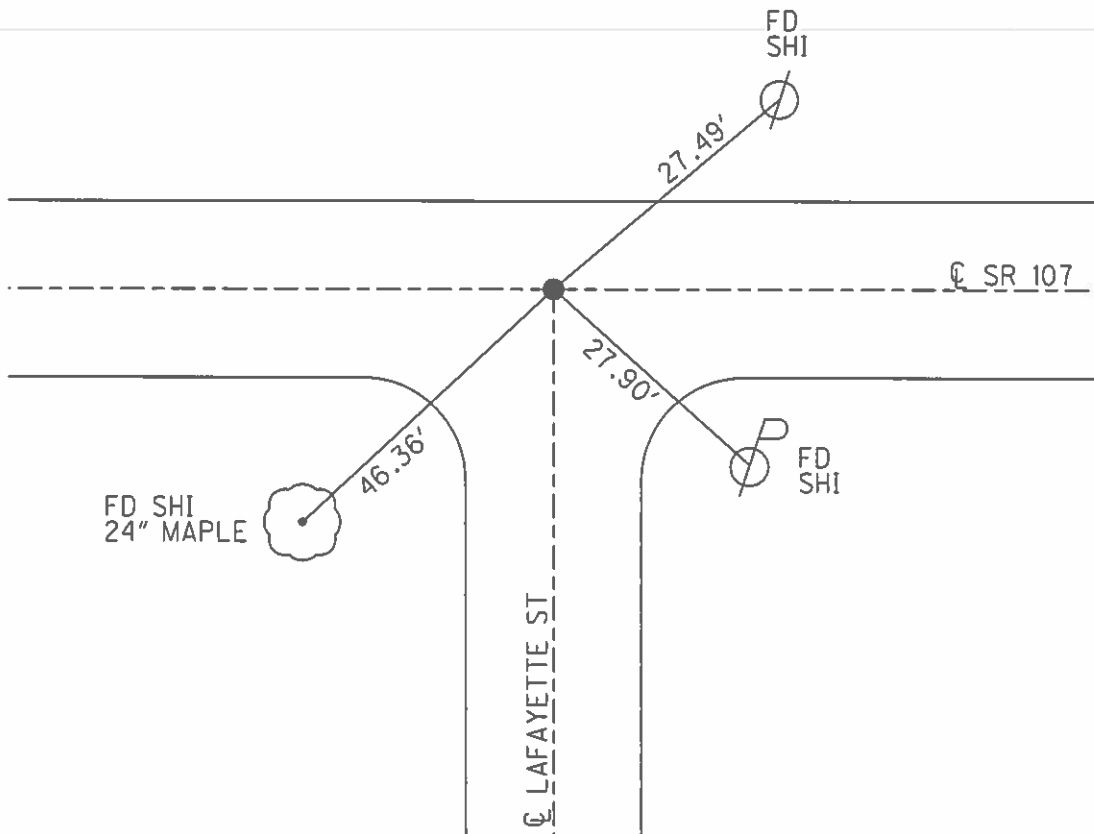
NOTES STONE DATE 10/14/80 ROUTE SR 107  
 H.C. MICHALAK WEATHER CLOUDY COUNTY WILLIAMS  
 R.C. NEUSER TEMP. 58° TOWNSHIP SUPERIOR  
 \_\_\_\_\_ SECTION 11  
 \_\_\_\_\_ T 7 N R 2 E

TYPE MONUMENT NAIL  
 ON SURFACE - ~~BELOW~~ ON  
 LEFT - ☉ PAV'T - RIGHT ON  
15.4' TO N EDGE PAVEMENT  
 S.L.M. 456+58±



Grid: Northing: \_\_\_\_\_ Easting: \_\_\_\_\_

RECORD:  
 DNF, 5/18/05



County Williams S.R. 107

Date 14 Oct. 80

Township Superior

Weather Cloudy

Section 11

Temp. 58°

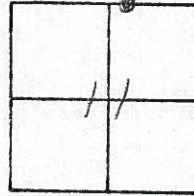
T\_N, R\_E

Personnel 1. Stone

R. Michalek

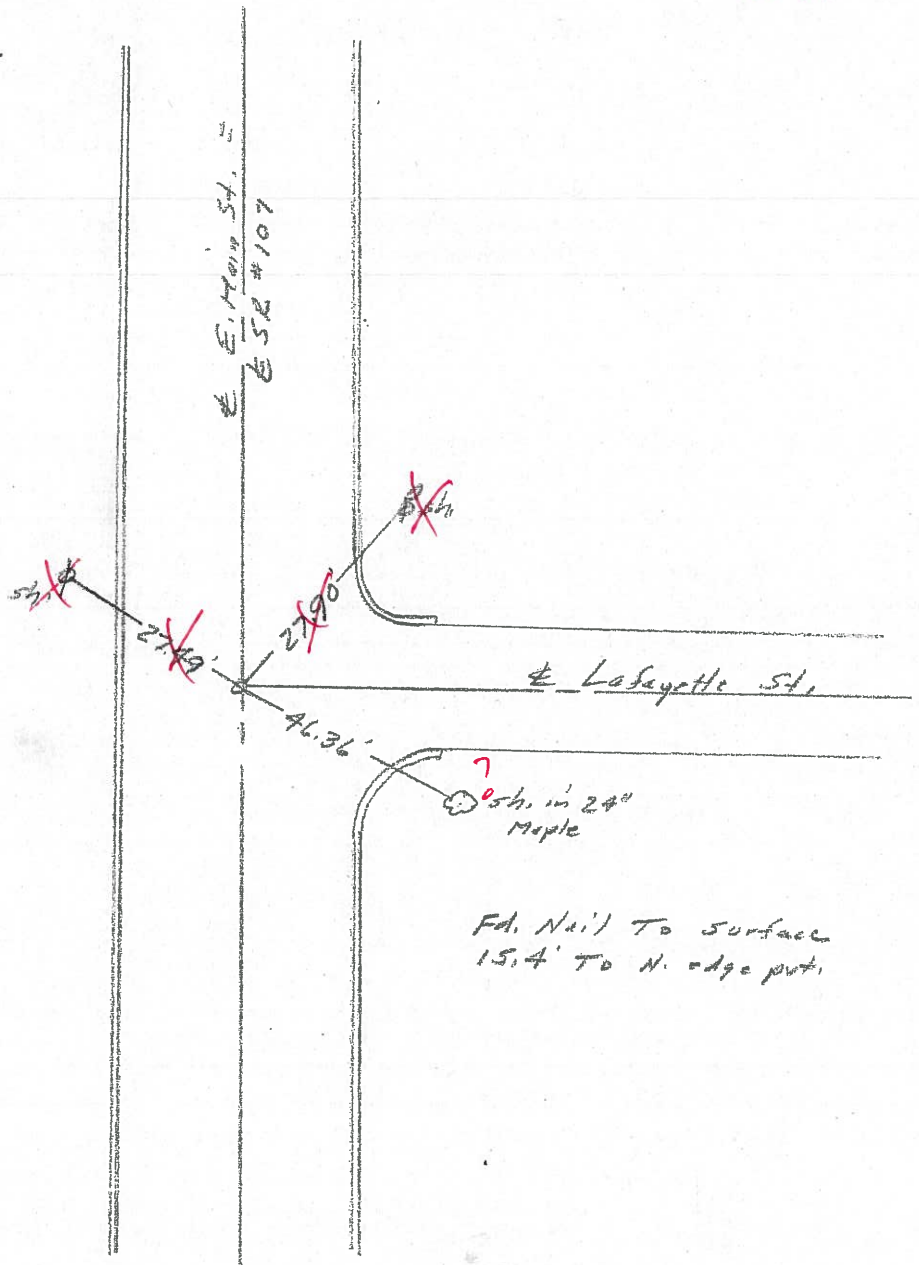
P. Nrosco

D. Curtis



(8.64)

REF. NO. 18A



DWF  
5/10/05

Fd. Nail To surface  
15.4' To N. edge pt.

ODOT. DISTRICT 2 SURVEY OFFICE

County Williams S.R. 107

Date 14 Oct. 80

Township Superior

Weather Cloudy

Section 11

Temp. 58°

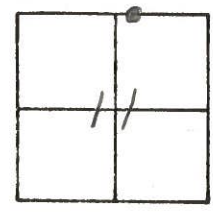
T    N, R    E

Personnel 1. Stone

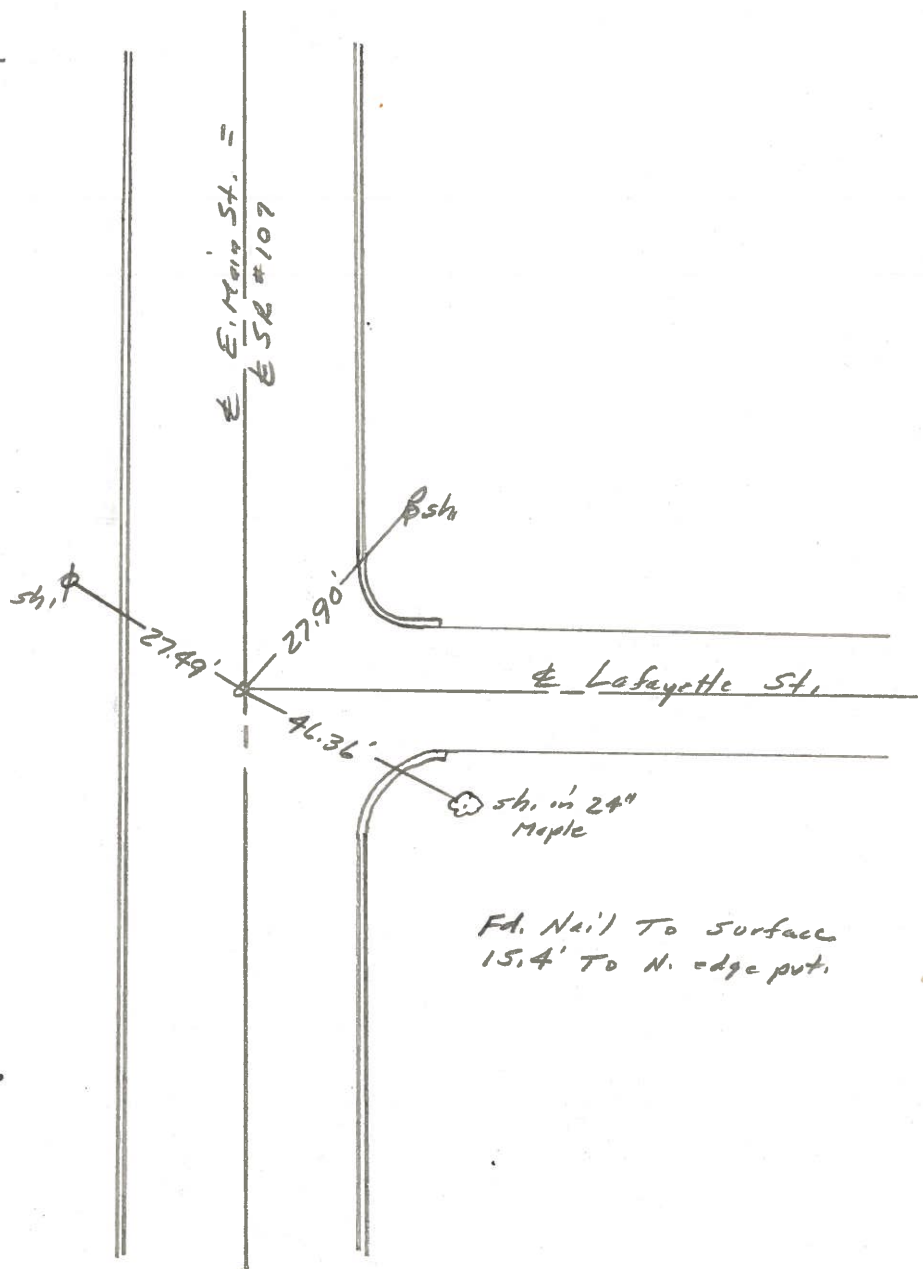
R. Michalek

P. Neuse

D. Curtis



REF. NO. 18-A



DID NOT FIND S/18/05  
RESURFACE PROJECT