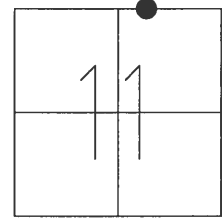


O.D.O.T. DISTRICT 2 SURVEY OFFICE (USE ONLY)

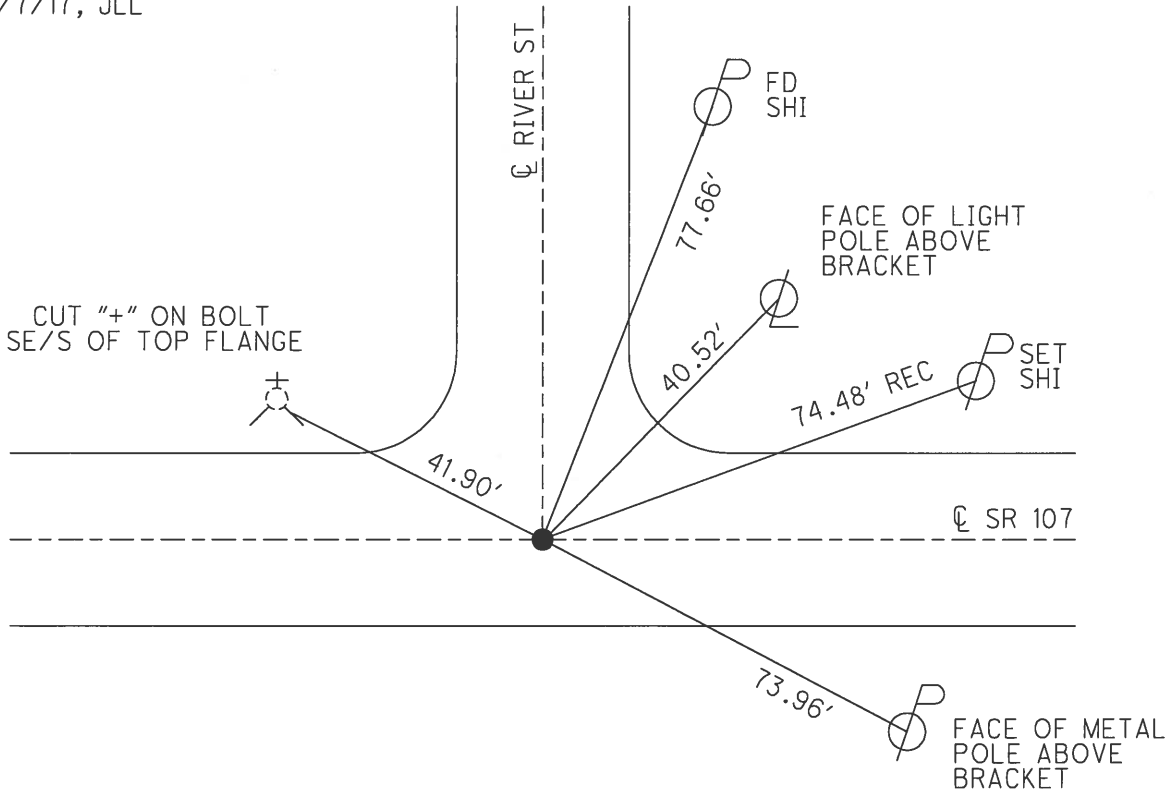
PERSONNEL _____ REFERENCE NO. 18 B SHEET 13 OF 25
 NOTES HOMAN DATE 4/19/17 ROUTE SR 107
 H.C. HOMAN WEATHER CLOUDY COUNTY WILLIAMS
 R.C. HELDMAN TEMP. 65° TOWNSHIP SUPERIOR
 SECTION 11
 T 7 N R 2 E

TYPE MONUMENT MAG/WASHER
 ON SURFACE - ~~BELOW~~ ON
 LEFT - ☉ PAV'T - RIGHT ON
17.1' TO RT EDGE PAVEMENT
 S.L.M. 459+02.83



GRID: NORTHING: 706376.702 EASTING: 1393682.810

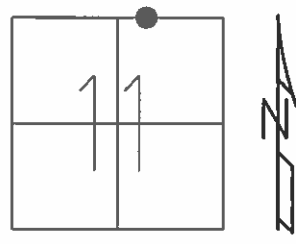
RECORD:
 SET MAG/WASHER
 8/15/05, MB
 FD MAG/WASHER
 REFC18
 12/29/14, DCH
 SET MAG/WASHER
 8/7/17, JLL



O.D.O.T. DISTRICT 2 SURVEY OFFICE (USE ONLY)

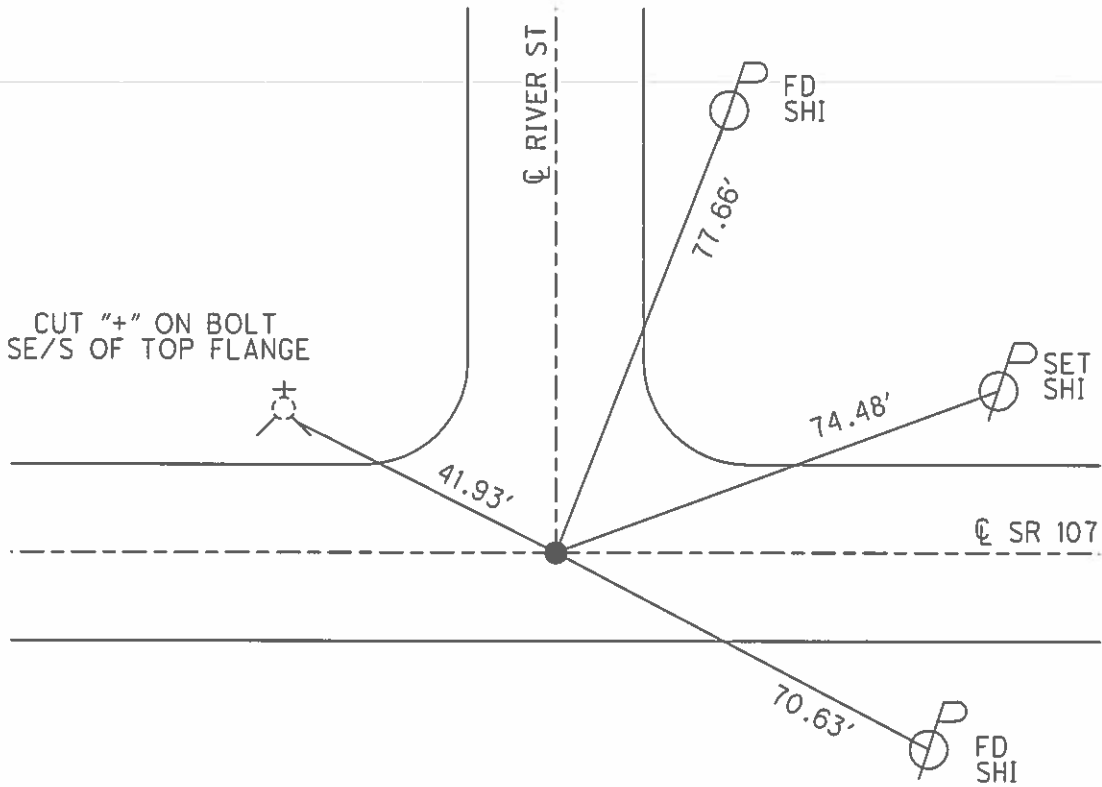
PERSONNEL _____ REFERENCE NO. 18 B SHEET 9 OF 13
 NOTES BARNHISEL DATE 5/18/05 ROUTE SR 107
 H.C. CANTERBURY WEATHER CLOUDY COUNTY WILLIAMS
 R.C. MIKLOVIC TEMP. 50° TOWNSHIP SUPERIOR
 SECTION 11
 T 7 N R 2 E

TYPE MONUMENT P.K./WASHER
 ON SURFACE - ~~BELOW~~ ON
 LEFT - ☉ PAV'T - RIGHT ON
17.1' TO RT EDGE PAVEMENT
 S.L.M. 459+09



GRID: NORTHING: _____ EASTING: _____

RECORD:
 SET MAG/WASHER
 8/15/05, MB



O.D.O.T. DISTRICT 2 SURVEY OFFICE

PERSONNEL

REFERENCE NO. 18-B

SHEET 7 OF 10

NOTES BARNHISEL

DATE 5/18/05

ROUTE S.R.#107

H.C. CANTERBURY

WEATHER CLOUDY

COUNTY WILLIAMS

R.C. MIKLOVIC

TEMP. +50°

TOWNSHIP SUPERIOR

SECTION 11

T 7 N R 2 E

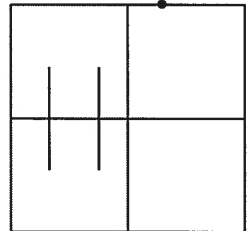
TYPE MONUMENT P.K. WASHER

ON SURFACE - ~~BELOW~~ SURFACE

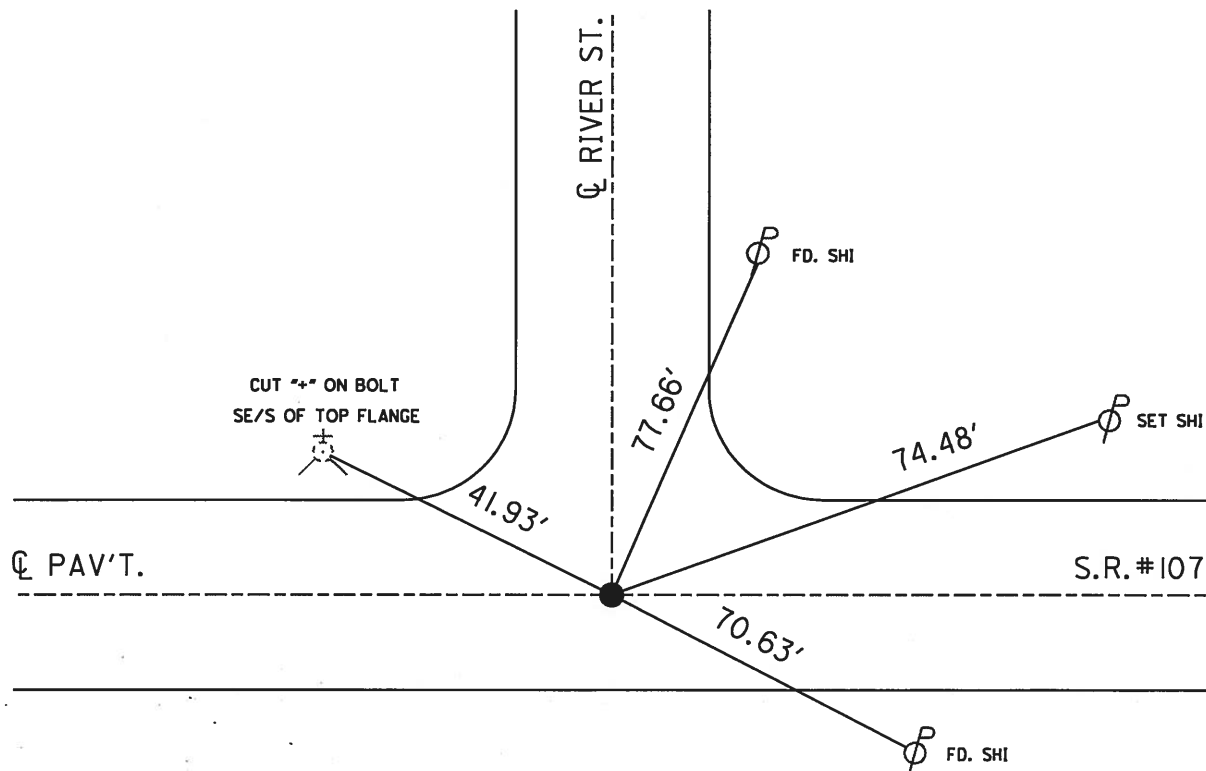
~~LEFT -~~ CL PAV'T - ~~RIGHT~~ CL PAV'T

17.1' TO RT. EDGE PAVEMENT

S.L.M. 459+09



RESET MAG &
WASHER 8/15/05 MB



O.D.O.T. DISTRICT 2 SURVEY OFFICE

PERSONNEL _____

REFERENCE NO. _____

SHEET 5 OF 5

NOTES LOENRKE

H.C. ROMETO

R.C. CANTERBURY

CORDS

DATE 6-16-93

WEATHER Cloudy

TEMP. +80

ROUTE S.R. 107

COUNTY Williams

TOWNSHIP Superior

SECTION 11

T 7 N R 2 E

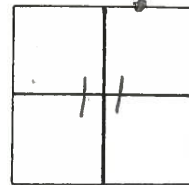
TYPE MONUMENT P.K. / WASHER

ON SURFACE - BELOW yes

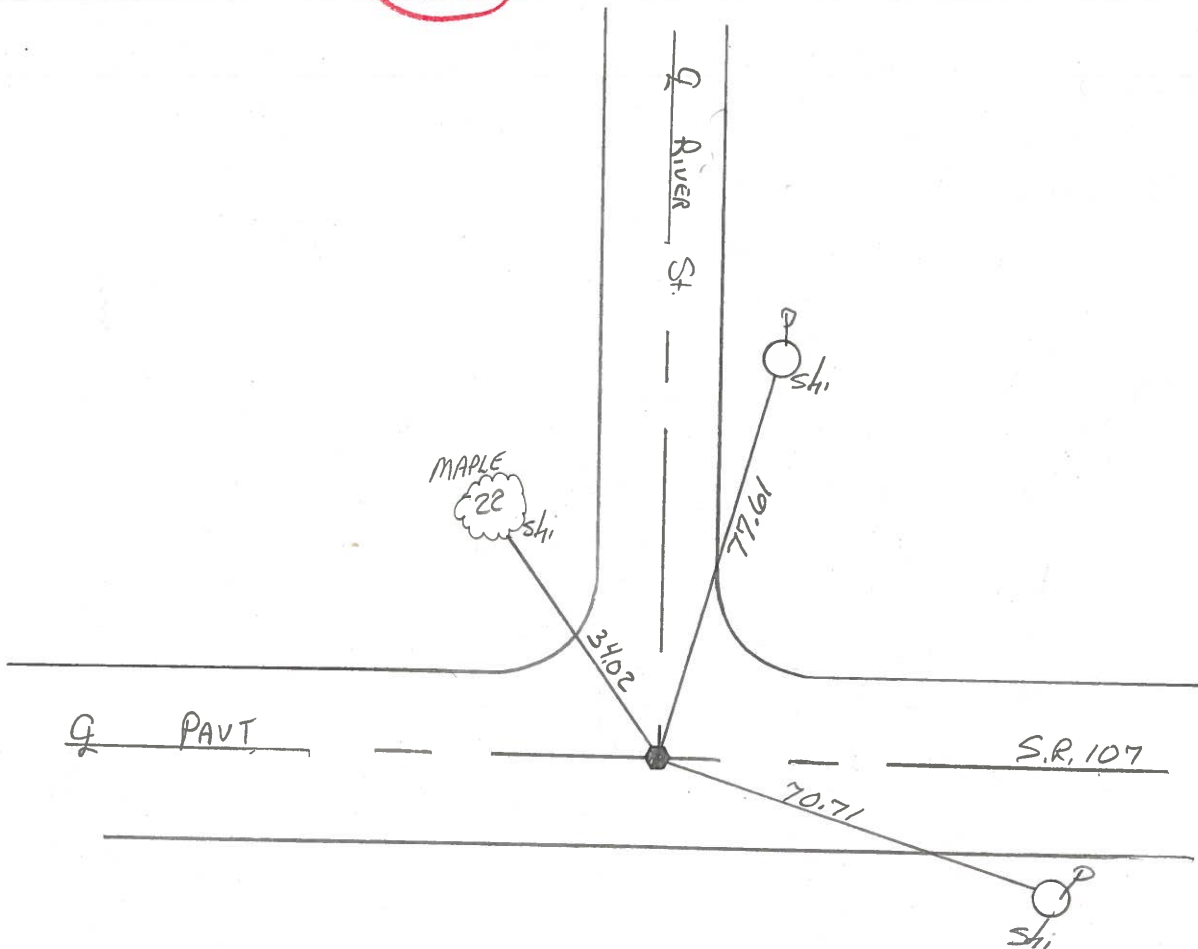
~~LEFT~~ - C PAV'T. - RIGHT

17.1 TO Rt EDGE PAVEMENT

S.L.M. 459 +07



18B



ODOT DISTRICT 2 SURVEY OFFICE

SHEET 5-A OF

County Williams S.R. 107

Date 14 Oct. 80

Township Superior

Weather cloudy

Section 11

Temp. 58°

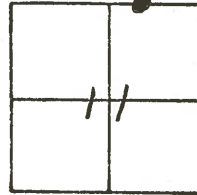
T N, R E

Personnel I. Stone

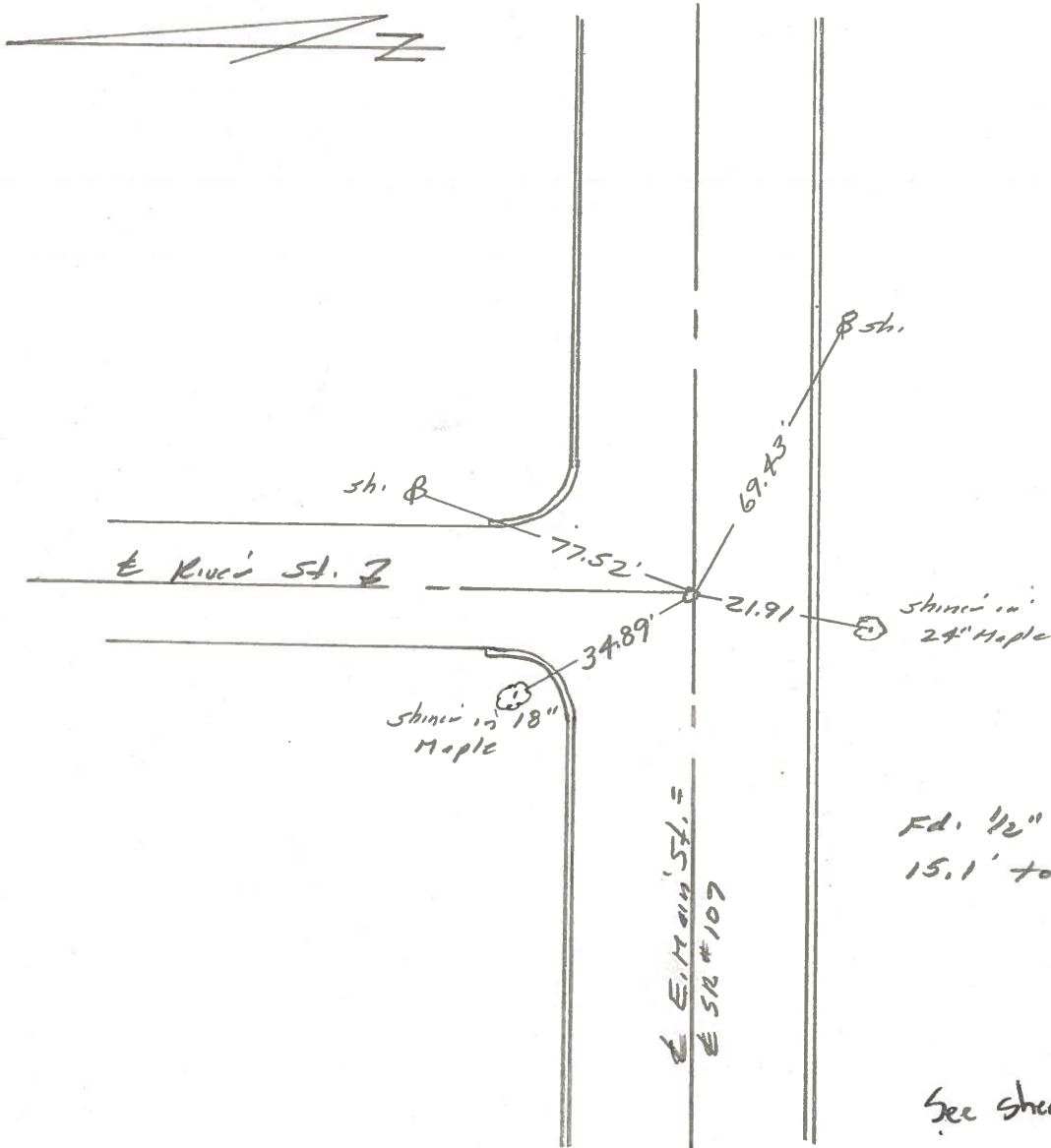
R. Michalak

P. Neuser

D. Curtis



REF. No. **18B**



Fd. 1/2" I. Pin To Surface
15.1' to S. Face curb

See sheet 5 of 5

County Williams S.R. 107

Date 14 Oct. 80

Township Superior

Weather Cloudy

Section 11

Temp. 58°

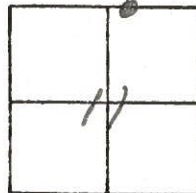
T N, R E

Personnel J. Stone

R. Michalak

P. Neuser

D. Curtis



REF. NO. 18B

