

O.D.O.T. DISTRICT 2 SURVEY OFFICE (USE ONLY)

PERSONNEL _____ REFERENCE NO. 19 SHEET 16 OF 25

NOTES LEU DATE 4/21/17 ROUTE SR 107

H.C. LEU WEATHER CLOUDY COUNTY WILLIAMS

R.C. HELDMAN TEMP. 50° TOWNSHIP SUPERIOR

SECTION 12

T 7 N R 2 E

TYPE MONUMENT MONBOX W/IPIN

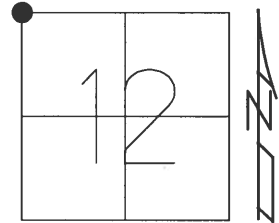
ON SURFACE - ~~BELOW~~ ON _____

LEFT - ☉ PAV'T - RIGHT ON _____

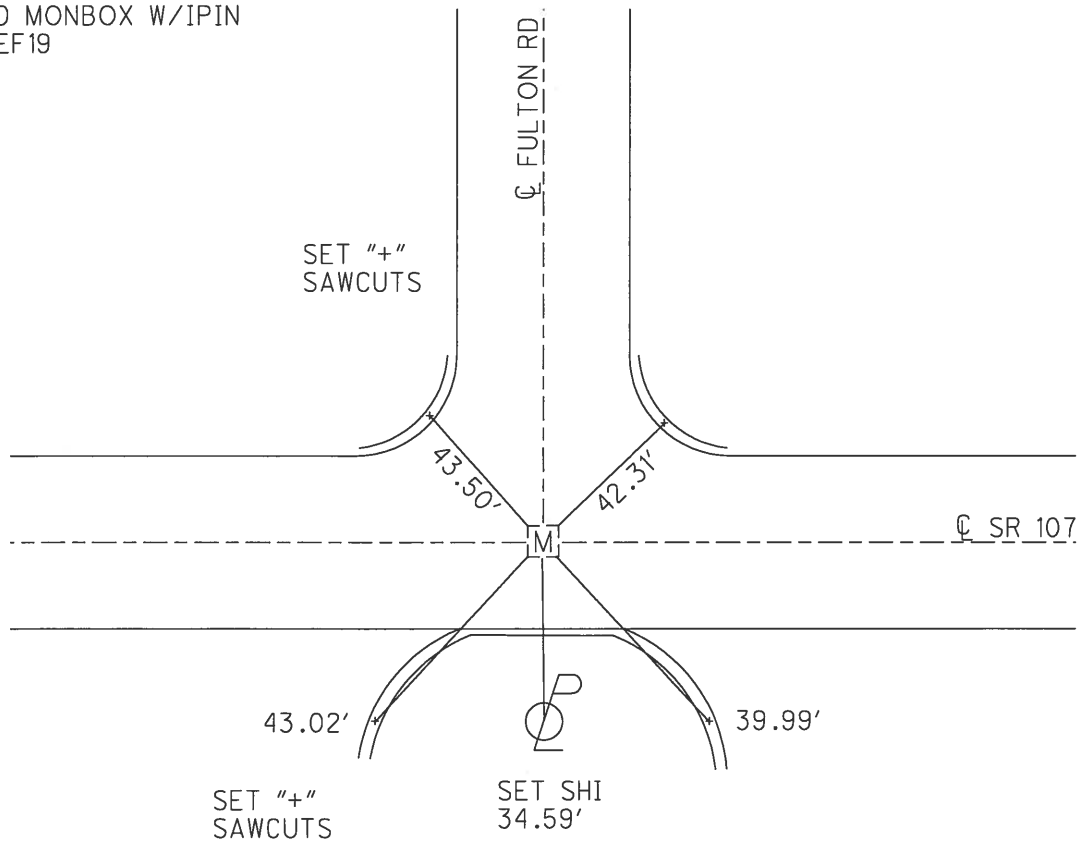
- TO - EDGE PAVEMENT

S.L.M. 479+33.02

GRID: NORTHING: 706348.170 EASTING: 1395712.791



RECORD:
FD MONBOX W/IPIN
REF 19



PERSONNEL TITLE PERSONNEL TITLE

Red Beach

COUNTY William

DATE 17 Mar '69

Newcomb

S. R. 107

WEATHER

Knape

SEC. 8.95-11.05

TEMP.

Wise

DESCRIPTION

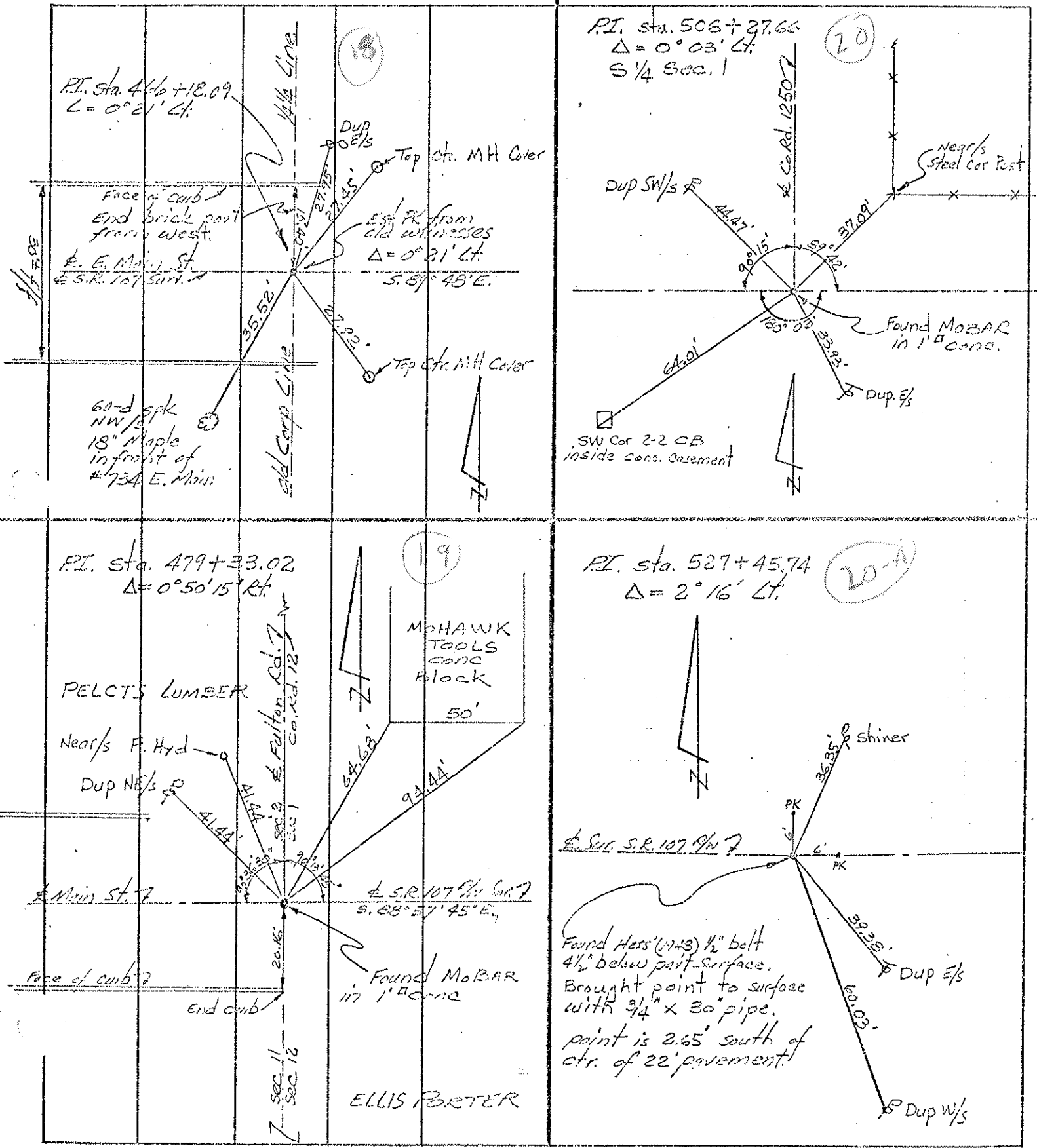
CONTROL POINTS

JOB NO. 02734

LEFT

CENTER LINE

RIGHT



P.I. Sta. 466+18.09
 $\Delta = 0^{\circ} 21' \text{ Lt.}$

(18)

Dup OE/s
Top ctr. MH Cover

Est. PK from old witnesses
 $\Delta = 0^{\circ} 21' \text{ Lt.}$
S. 87° 48' E.

Top ctr. MH Cover

Face of curb
End brick part from West
E. E. Main St
E.S.R. 107 Surr.

60-d spk NW 1/4
18" Maple in front of #734 E. Main

P.I. Sta. 506+27.66
 $\Delta = 0^{\circ} 03' \text{ Lt.}$
S 1/4 Sec. 1

(20)

Dup SW/s

Near/s Steel Car Post

Found MoBAR in 1" conc.
Dup E/s
SW Cor 2-2 CB inside conc. Casement

P.I. Sta. 479+33.02
 $\Delta = 0^{\circ} 50' 15" \text{ Rt.}$

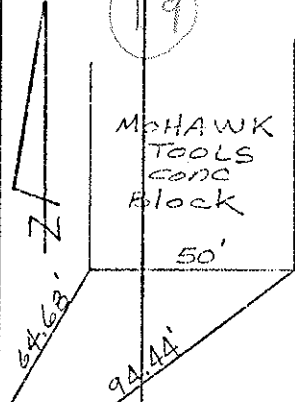
(19)

MOHAWK TOOLS CONC Block
50'

PELCTS LUMBER

Near/s F. Hyd

Dup NE/s



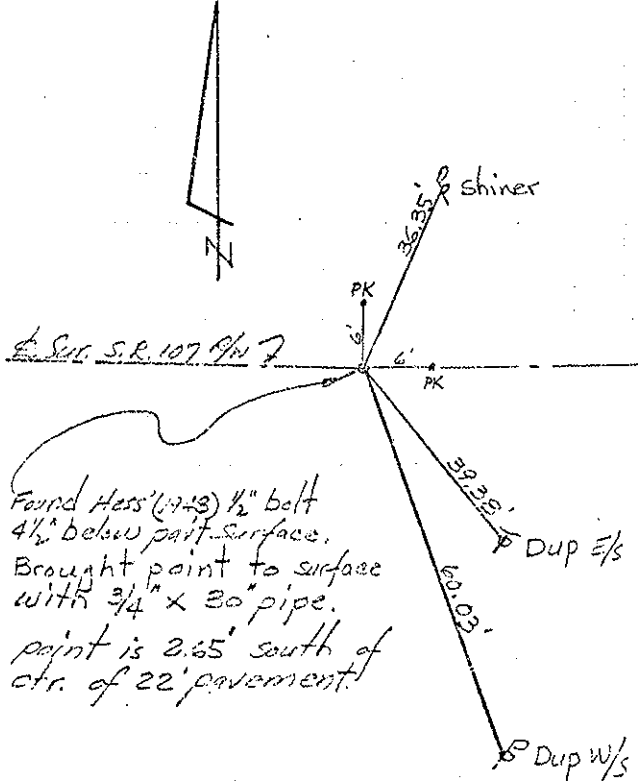
E.S.R. 107 Surr
S. 68° 57' 45" E.

Found MoBAR in 1" conc

ELLIS PORTER

P.I. Sta. 527+45.74
 $\Delta = 2^{\circ} 16' \text{ Lt.}$

(20-A)



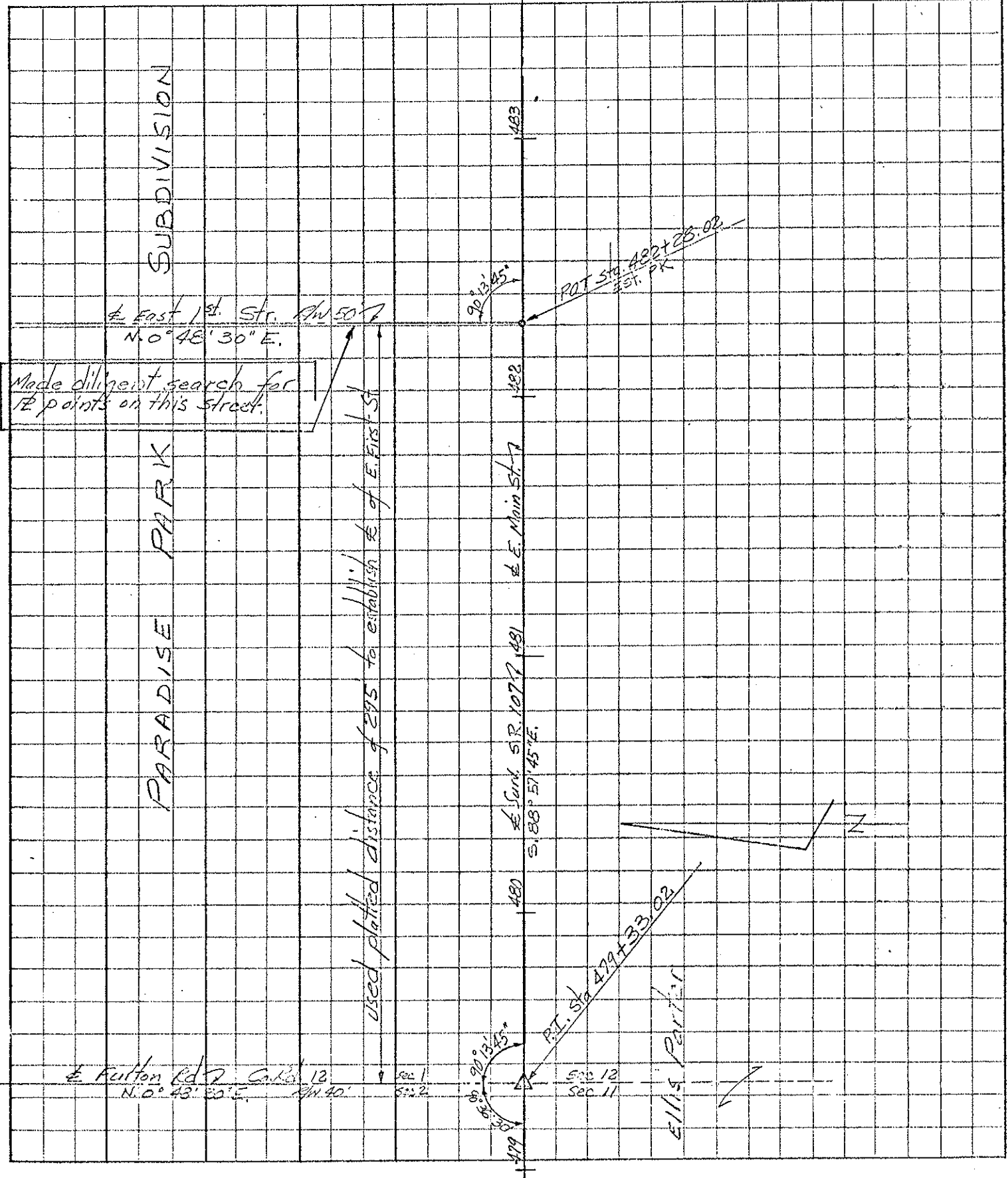
E.S.R. 107 Surr

Found Hess (1943) 1/2" bolt
4 1/2" below part surface.
Brought point to surface with 3/4" x 30" pipe.
point is 2.65' south of ctr. of 22' pavement.

PERSONNEL	TITLE	PERSONNEL	TITLE
Red Berch			
Newcomb			
Knappe			
Wise			

COUNTY Williams DATE Dec. 68
 S. R. 107 WEATHER _____
 SEC. 8.96 - 11.05 TEMP. _____

DESCRIPTION ALIGNMENT JOB NO. 02734



PERSONNEL TITLE PERSONNEL TITLE

Red Beach
Newcomb
Knappe
Wise

COUNTY Williams DATE Nov. 1968
S. R. 107 WEATHER _____
SEC. 896-11.05 TEMP. _____

DESCRIPTION ALIGNMENT JOB NO. 02734

