

O.D.O.T. DISTRICT 2 SURVEY OFFICE (USE ONLY)

PERSONNEL

REFERENCE NO. 20 A

SHEET 24 OF 31

NOTES JAMES

DATE 3/4/19

ROUTE SR 107

H.C. LEU

WEATHER PTLY CLOUDY

COUNTY WILLIAMS

R.C. JAMES

TEMP. 14°

TOWNSHIP SUPERIOR

DWG BY NIESE

PID 101346

SECTION 1

T 7 N R 2 E

TYPE MONUMENT MONBOX W/ 1" IPIN

ON SURFACE - ~~BELOW~~ ON

OFFSET ☉ PAVEMENT ON LT : RT

26.8' TO RT EDGE PAVEMENT

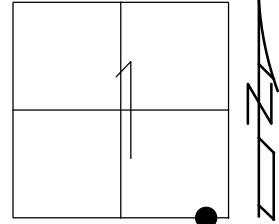
STATION: 526+77.40

HORZ.DATUM: NAD83(2011)

GEOID: 2012A

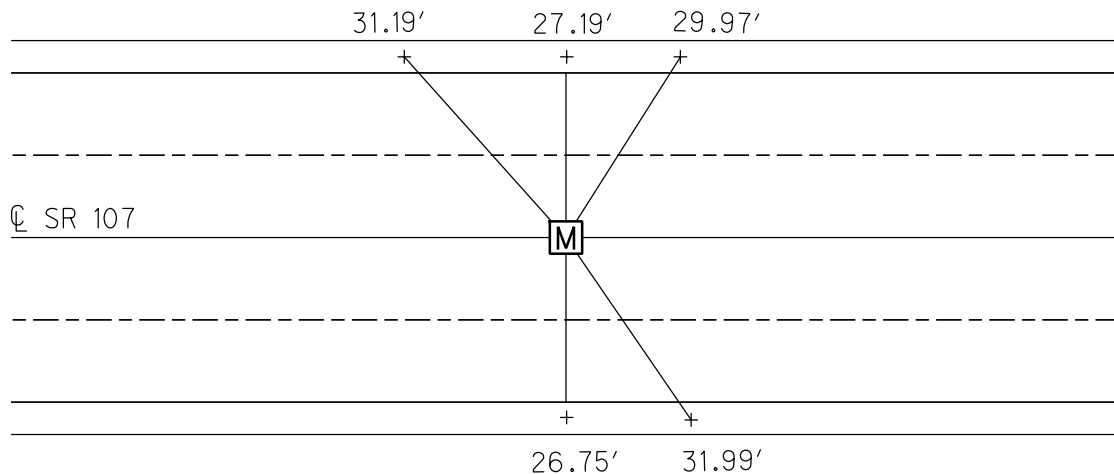
GRID: NORTHING: 706354.316

EASTING: 1400451.985



RECORD: P.C.
 STA 526+77.40
 OPENED & CHISELED
 "+" ON LID FOR POINT
 12/9/93, MB
 FD MONBOX
 W/ 1" IPIN
 FEFA20
 3/4/19, JLL

SET "+"s
 W/DRILLH
 CURB



O.D.O.T. DISTRICT 2 SURVEY OFFICE (USE ONLY)

PERSONNEL _____ REFERENCE NO. 20 A SHEET 23 OF 25

NOTES BARNHISEL DATE 12/9/93 ROUTE SR 107

H.C. BARNHISEL WEATHER CLOUDY COUNTY WILLIAMS

R.C. KUSZ TEMP. 40° TOWNSHIP SUPERIOR

SECTION 1

T 7 N R 2 E

TYPE MONUMENT MONBOX

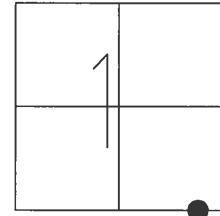
ON SURFACE - ~~BELOW~~ ON _____

LEFT - ☉ PAV'T - RIGHT ON _____

26.8' TO RT EDGE PAVEMENT

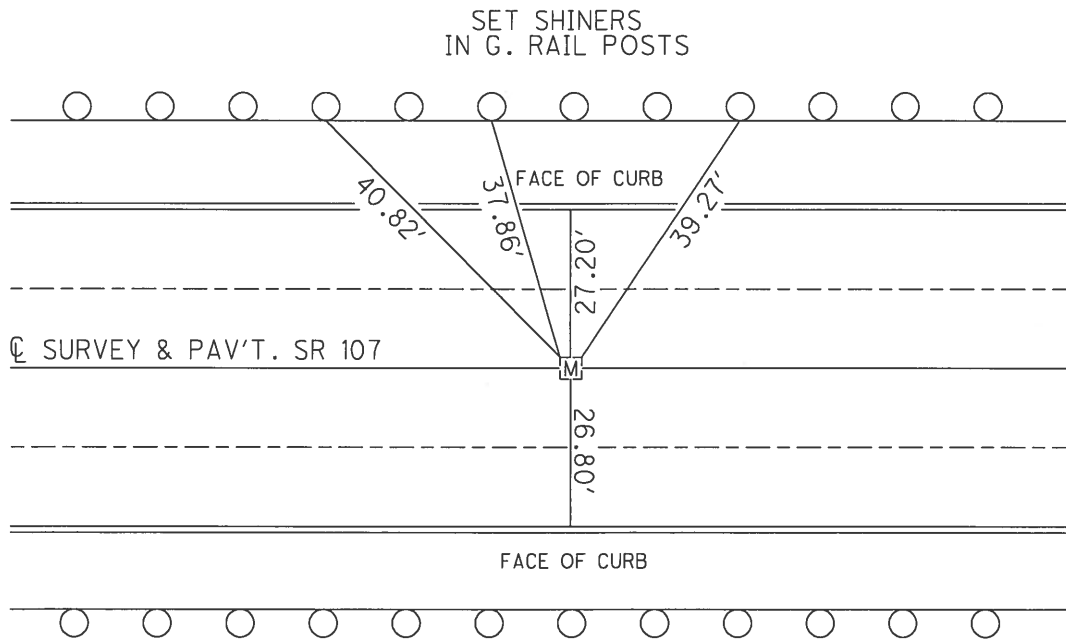
S.L.M. 526+77.40

GRID: NORTHING: _____ EASTING: _____



RECORD: P.C.
STA 526+77.40

NOTE:
OPENED & CHISELED
"+" ON LID FOR POINT
12/9/93, MB



O.D.O.T. DISTRICT 2 SURVEY OFFICE

PERSONNEL

REFERENCE NO. 20-A

SHEET 9 OF 10

NOTES BARNHISEL

DATE 12-9-93

ROUTE S.R.#107

H.C. BARNHISEL

WEATHER CLOUDY

COUNTY WILLIAMS

R.C. KUSZ

TEMP. +40°

TOWNSHIP SUPERIOR

SECTION 1

T 7 N R 2 E

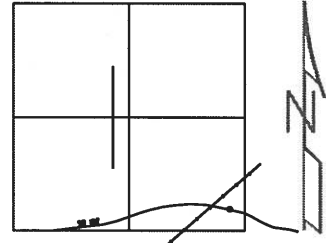
TYPE MONUMENT MON. BOX OPENED & CHISELED
"X" ON LID FOR POINT

ON SURFACE - ~~BELOW~~ YES

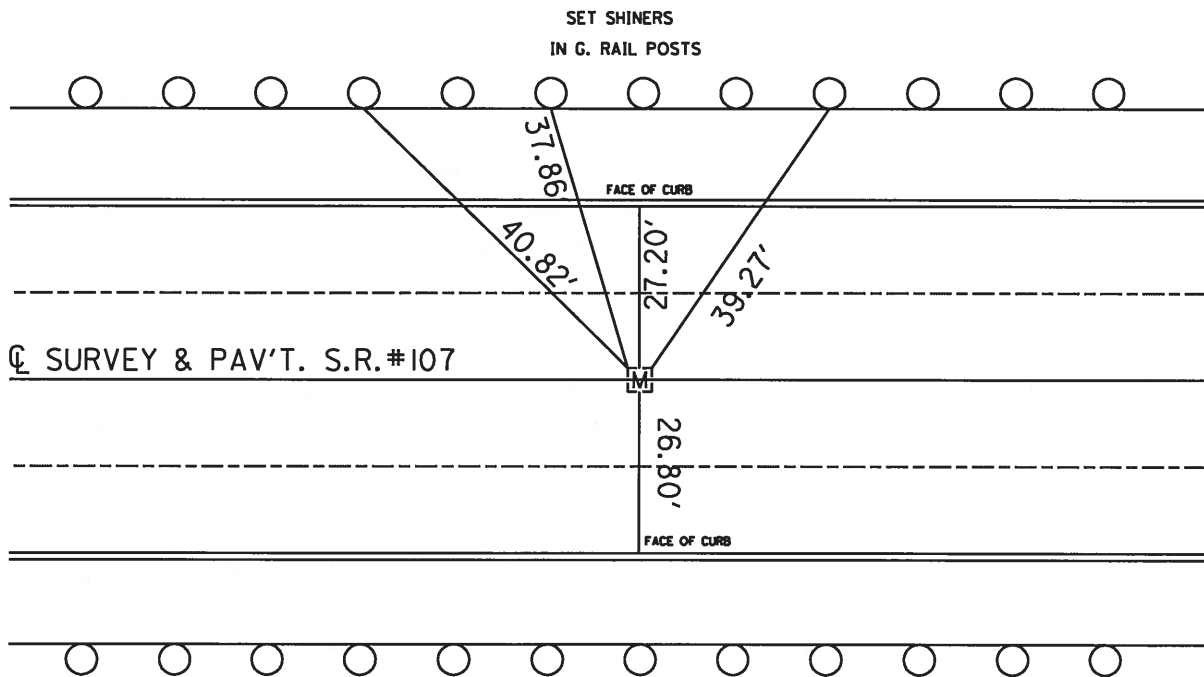
~~LEFT~~ - CL PAV'T - ~~RIGHT~~ CL

26.8' TO RT. EDGE PAVEMENT

S.L.M. 526+77.40



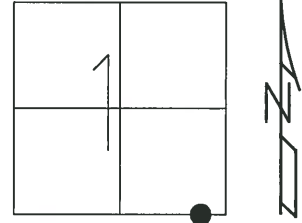
RECORD: P.C. 526+77.40



O.D.O.T. DISTRICT 2 SURVEY OFFICE (USE ONLY)

PERSONNEL _____ REFERENCE NO. ~~20~~ SHEET 11 OF 13
 NOTES BARNHEISEL DATE 12/9/93 ROUTE SR 107
 H.C. BARNHEISEL WEATHER CLOUDY COUNTY WILLIAMS
 R.C. KUSZ TEMP. 40° TOWNSHIP SUPERIOR
 SECTION 1
 T 7 N R 2 E

TYPE MONUMENT MONBOX
 ON SURFACE - ~~BELOW~~ ON
 LEFT - $\text{\textcircled{C}}$ PAV'T - RIGHT ON
 26.8' TO RT EDGE PAVEMENT
 S.L.M. 526+77.40

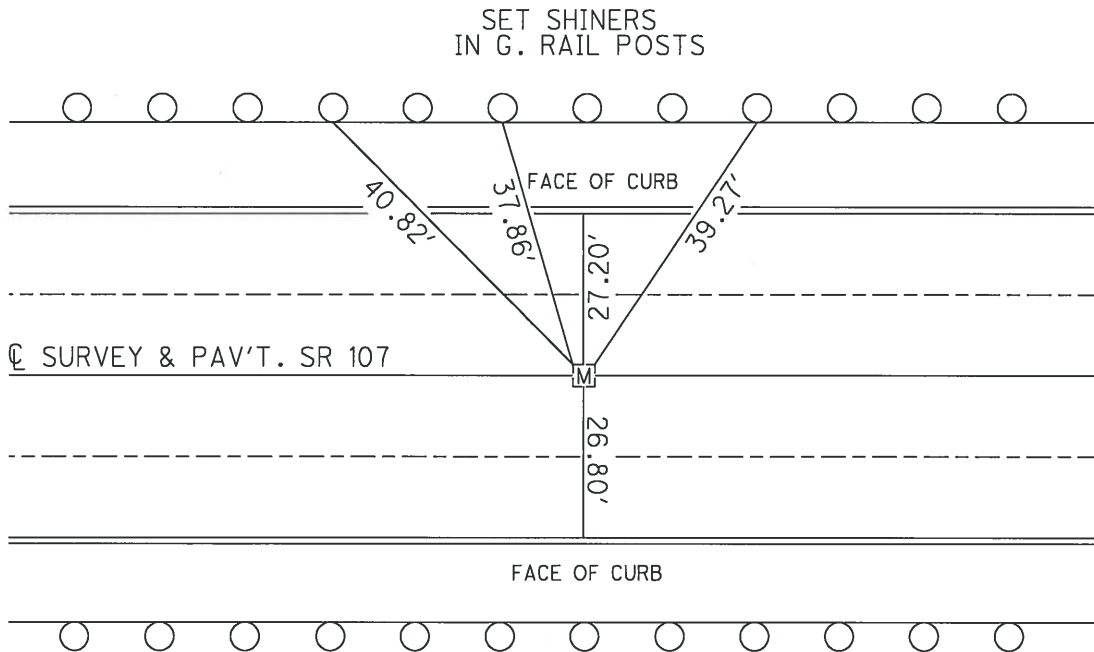


GRID: NORTHING: _____ EASTING: _____

RECORD: P.C.
 STA 526+77.40

20A

NOTE:
 OPENED & CHISELED
 "+" ON LID FOR POINT
 12/9/93, MB



O.D.O.T. DISTRICT 2 SURVEY OFFICE

PERSONNEL _____

REFERENCE NO. 19

SHEET 1 OF 5

NOTES BARNHISEL

H.C. " "

R.C. KUSZ

DATE 12-9-93

WEATHER cloudy

TEMP. +40°

ROUTE 107

COUNTY WILLIAMS

TOWNSHIP SUPERIOR

SECTION 1

T 7 N R 2 E

TYPE MONUMENT Mon. Box

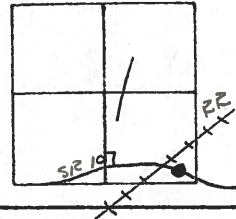
ON SURFACE - ~~BELOW~~ YES

~~EFF - C PAV'T. - RIGHT~~

26.8 TO RT EDGE PAVEMENT

S.L.M. 526+77.40

OPENED & chiseled
" + " ON LID FOR POINT

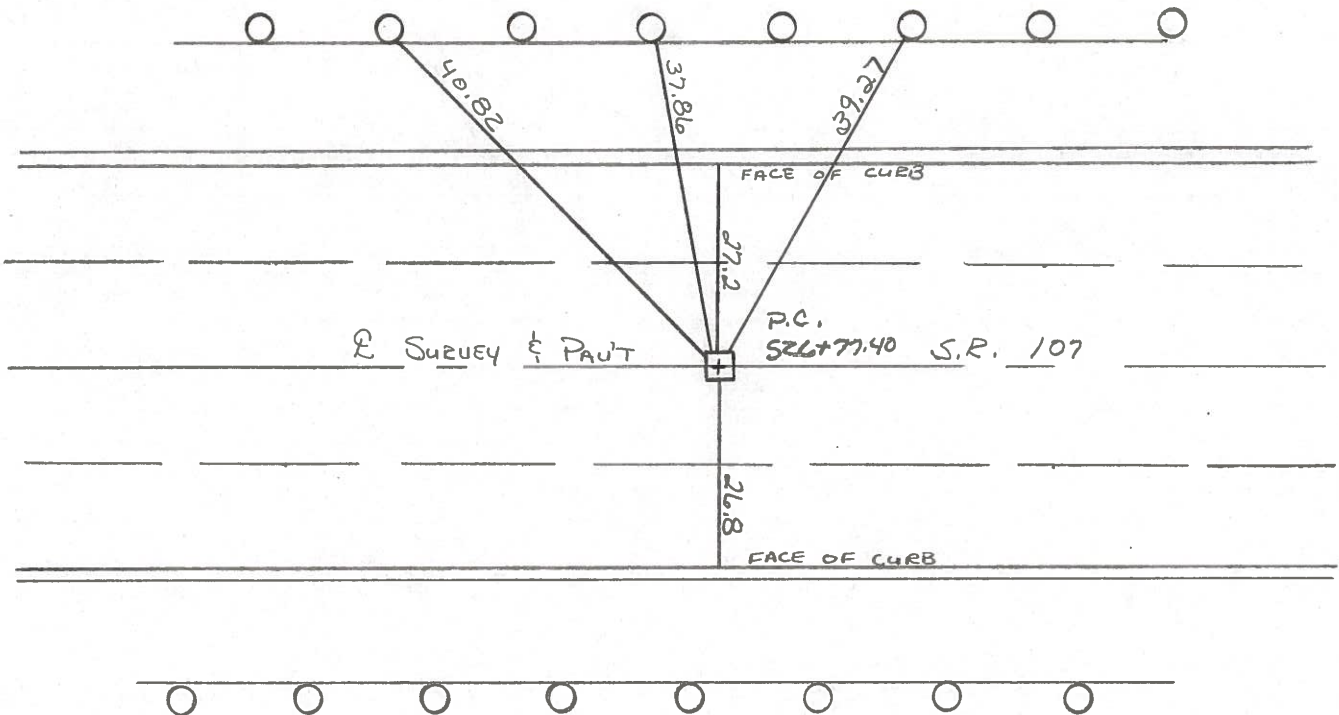


RECORDS:

P.C.

20A

SET SHINEES
IN G. RAIL POSTS



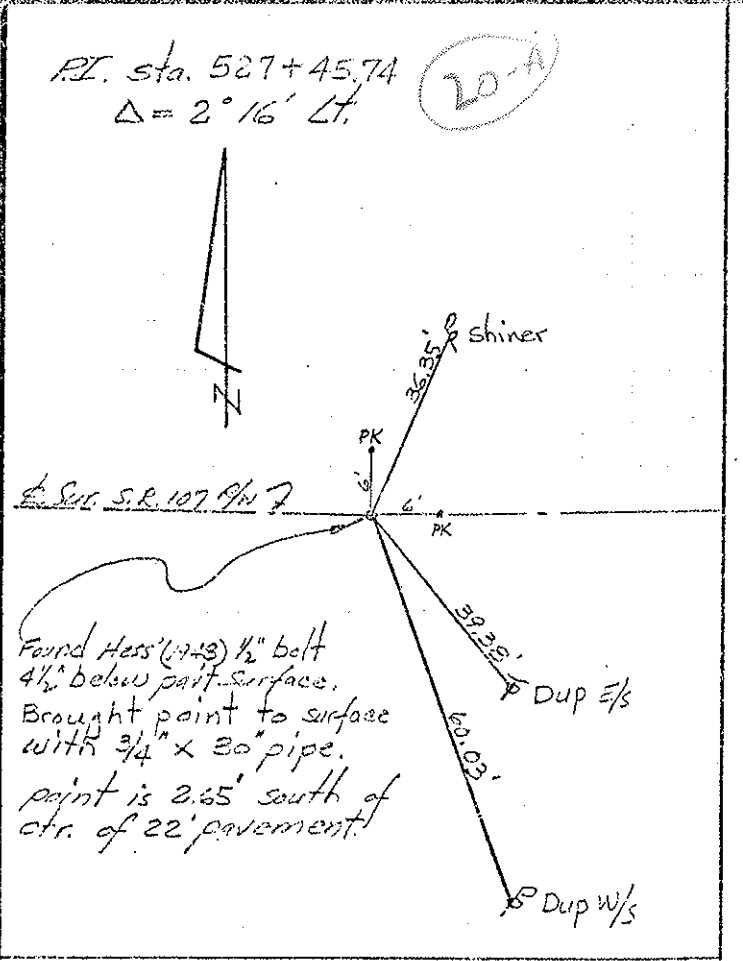
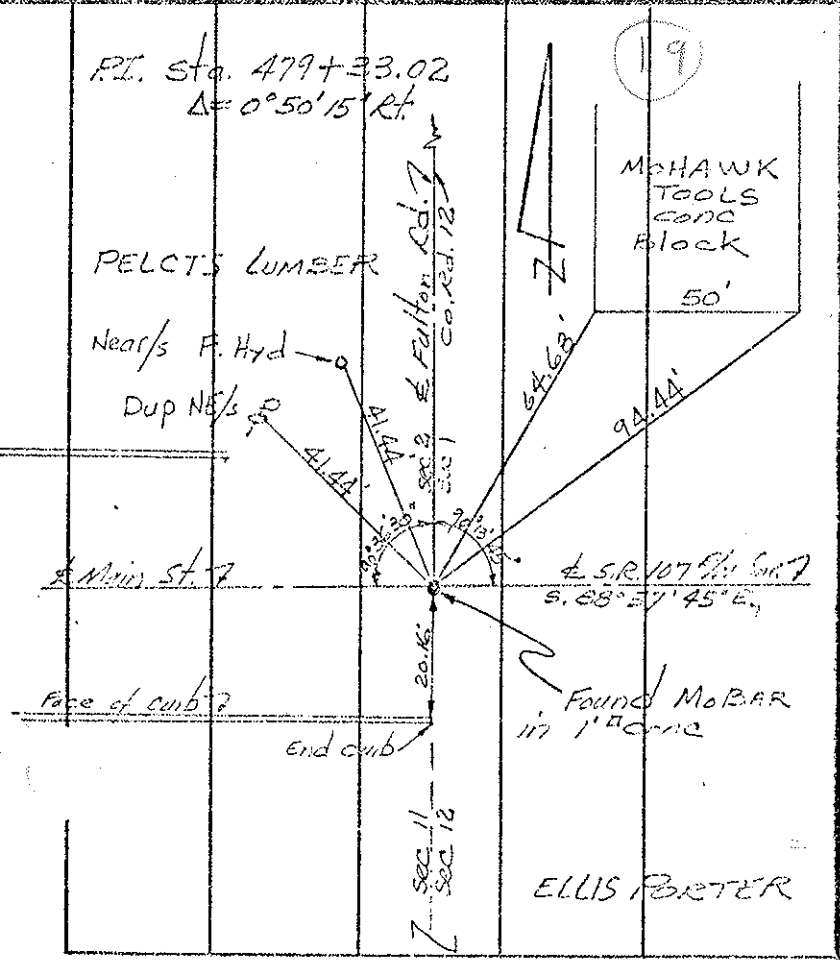
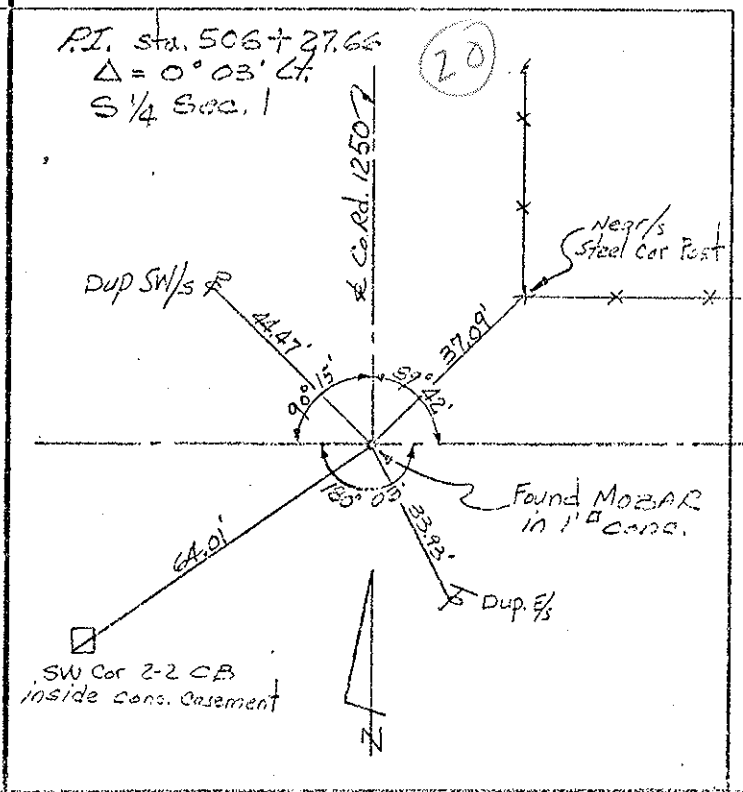
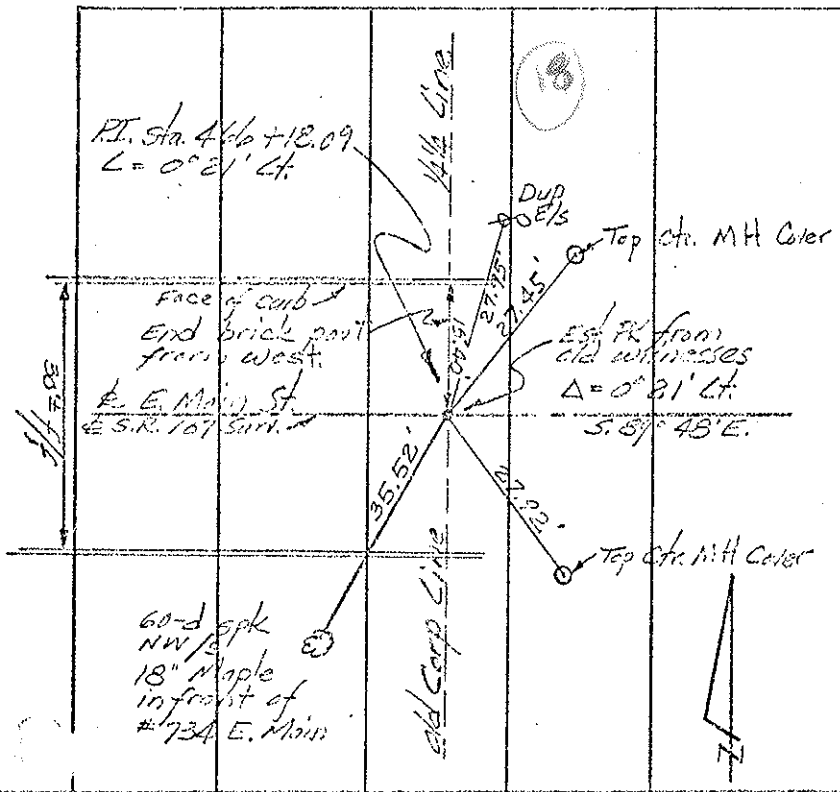
PERSONNEL TITLE PERSONNEL TITLE

Red Beach
Newcomb
Knappe
Wise

COUNTY William DATE 17 Mar '69
S. R. 107 WEATHER
SEC. 8.95-11.05 TEMP.

DESCRIPTION CONTROL POINTS JOB NO. 02734

LEFT CENTER LINE RIGHT



PERSONNEL	TITLE	PERSONNEL	TITLE	COUNTY	DATE
Red Bark				Williams	Dec 68
Newcomb				S. R. 107	WEATHER
Knape				SEC. 8.96-11.05	TEMP.
Wise					

DESCRIPTION: ALIGNMENT JOB NO. 02734

