

O.D.O.T. DISTRICT 2 SURVEY OFFICE (USE ONLY)

PERSONNEL

REFERENCE NO. 20 B

SHEET 25 OF 31

NOTES JAMES

DATE 3/13/19

ROUTE SR 107

H.C. LEU

WEATHER CLOUDY

COUNTY WILLIAMS

R.C. JAMES

TEMP. 42°

TOWNSHIP SUPERIOR

SECTION 1

DWG BY NIESE PID 101346

T 7 N R 2 E

TYPE MONUMENT MONBOX

ON SURFACE - ~~BELOW~~ ON

OFFSET ☉ PAVEMENT ON LT : RT

- TO - EDGE PAVEMENT

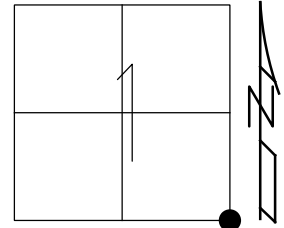
STATION: 533+35.29

HORIZ.DATUM: NAD83(2011)

GEOID: 2012A

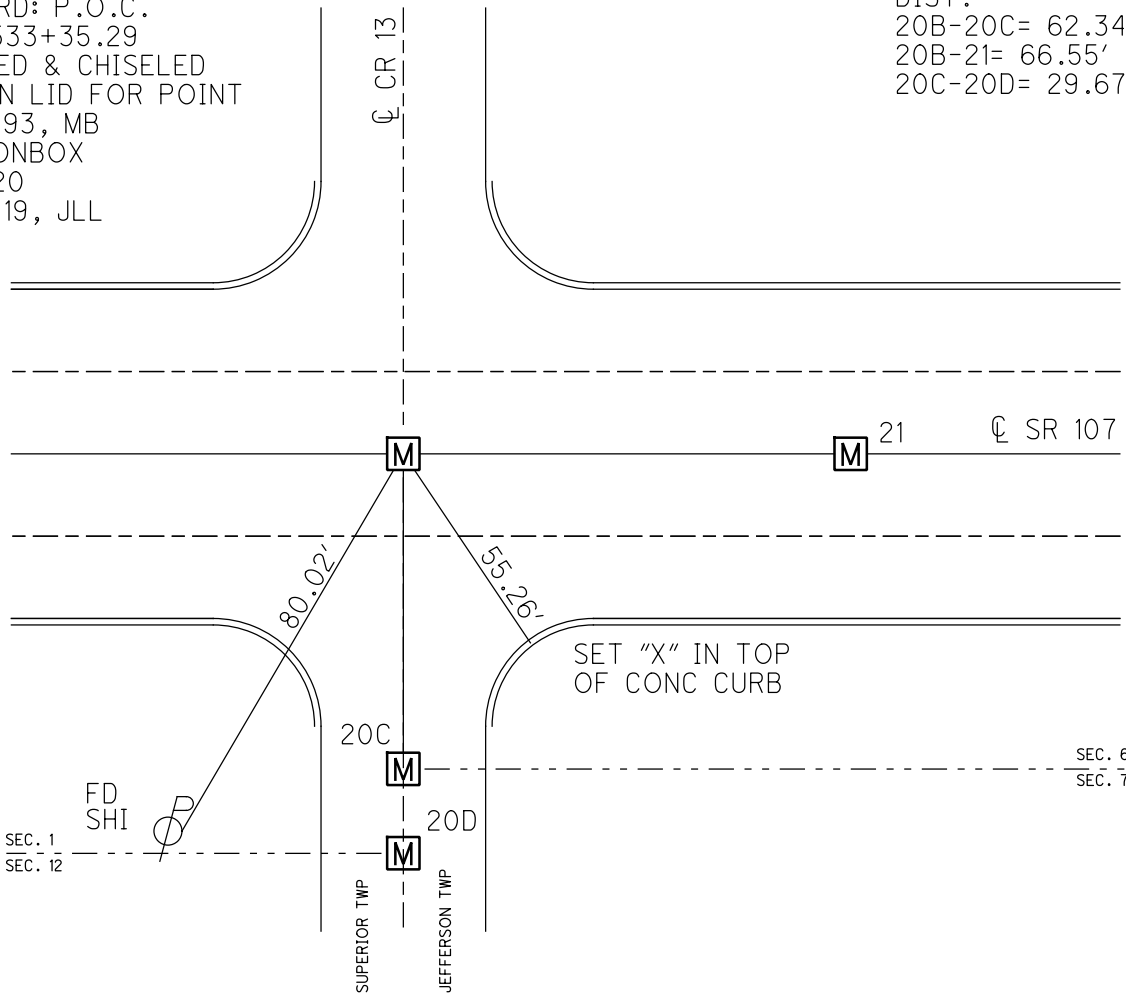
GRID: NORTHING: 706299.650

EASTING: 1401107.188



RECORD: P.O.C.
STA.533+35.29
OPENED & CHISELED
" + " ON LID FOR POINT
12/9/93, MB
FD MONBOX
REFB20
3/13/19, JLL

DIST.
20B-20C= 62.34'
20B-21= 66.55'
20C-20D= 29.67'

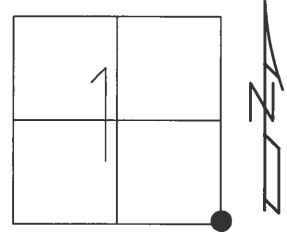


O.D.O.T. DISTRICT 2 SURVEY OFFICE (USE ONLY)

PERSONNEL _____ REFERENCE NO. 20 B SHEET 24 OF 25

NOTES BARNHEISEL DATE 12/9/93 ROUTE SR 107
 H.C. BARNHEISEL WEATHER CLOUDY COUNTY WILLIAMS
 R.C. KUSZ TEMP. 34° TOWNSHIP SUPERIOR
 _____ SECTION 1
 _____ T 7 N R 2 E

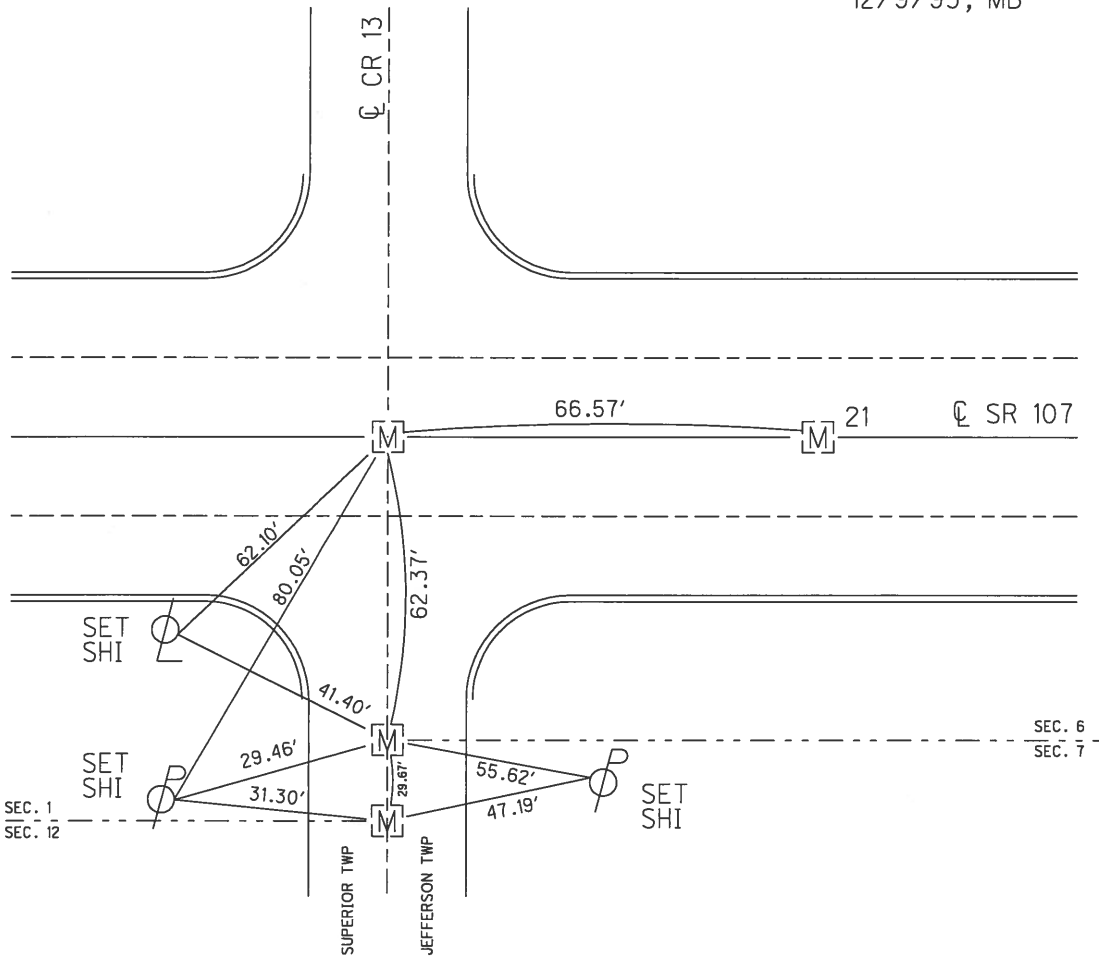
TYPE MONUMENT _____ MONBOX _____
 ON SURFACE - ~~BELOW~~ ON _____
 LEFT - ☉ PAV'T - RIGHT ON _____
 - TO - EDGE PAVEMENT _____
 S.L.M. 533+35.29



GRID: NORTHING: _____ EASTING: _____

RECORD: P.O.C.
 STA 533+35.29

NOTE:
 OPENED & CHISELED
 "+" ON LID FOR POINT
 12/9/93, MB



O.D.O.T. DISTRICT 2 SURVEY OFFICE

PERSONNEL

REFERENCE NO. 21
~~20~~

SHEET 10 OF 10

NOTES BARNHISEL

DATE 12-9-93

ROUTE S.R. #107

H.C. BARNHISEL

WEATHER CLOUDY

COUNTY WILLIAMS

R.C. KUSZ

TEMP. +34°

TOWNSHIP SUPERIOR/JEFFERSON

SECTION 1&12/6&7

T 7 N R 2 E/R 3 E

TYPE MONUMENT MON. BOXES

OPENED & CHISELED
"X" ON LID FOR POINT

ON SURFACE - ~~BELOW~~ YES (ALL)

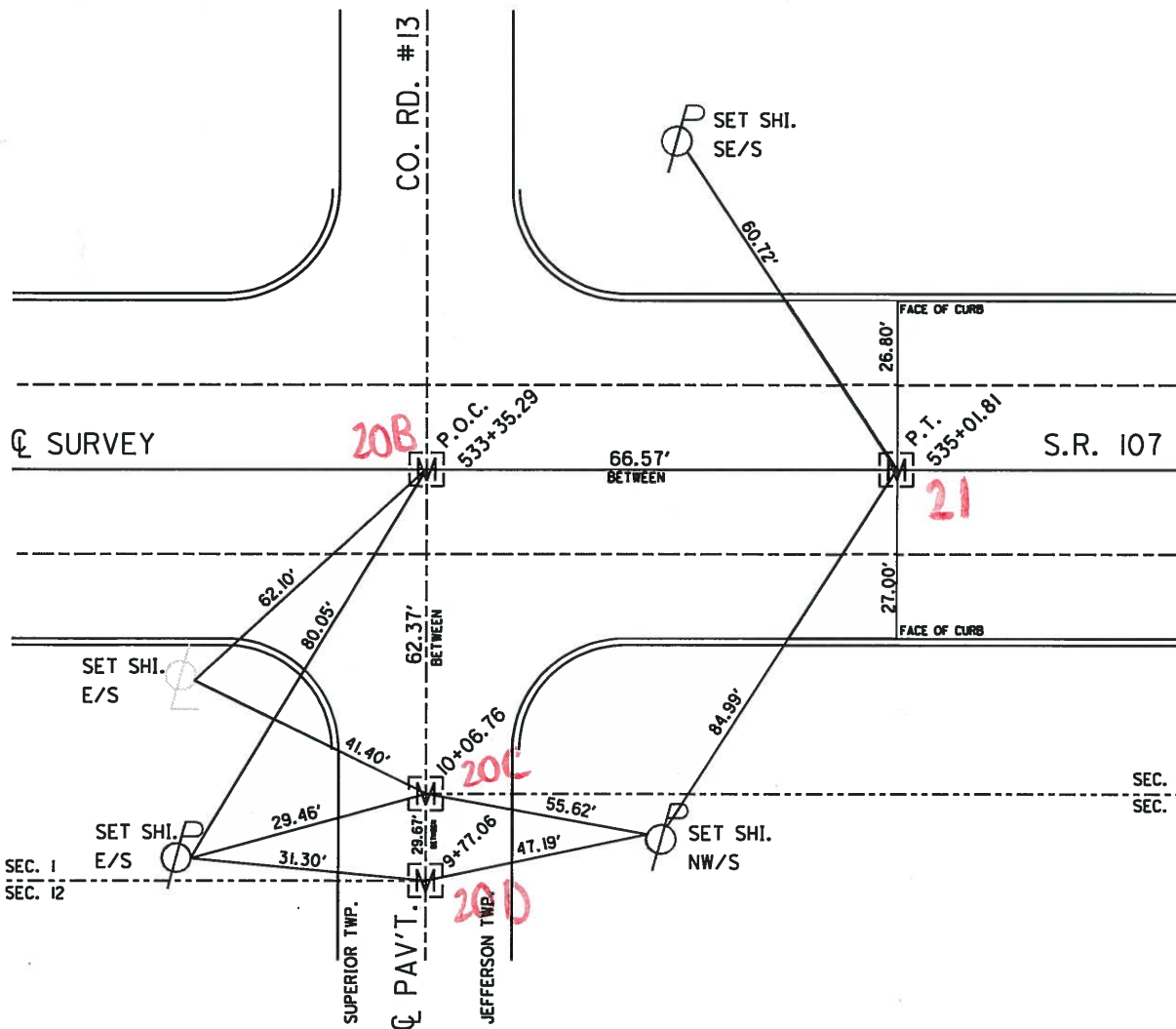
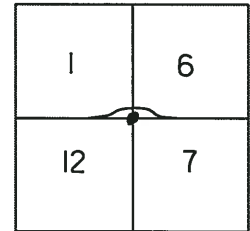
~~LEFT - C~~ PAV'T - ~~RIGHT~~ YES (ALL)

TO EDGE PAVEMENT

S.L.M. LISTED BELOW

533+35

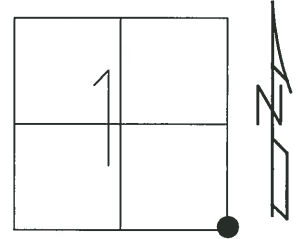
535+01



O.D.O.T. DISTRICT 2 SURVEY OFFICE (USE ONLY)

PERSONNEL _____ REFERENCE NO. ~~20 A~~ SHEET 12 OF 13
 NOTES BARNHISEL DATE 12/9/93 ROUTE SR 107
 H.C. BARNHISEL WEATHER CLOUDY COUNTY WILLIAMS
 R.C. KUSZ TEMP. 34° TOWNSHIP SUPERIOR
 SECTION 1
 T 7 N R 2 E

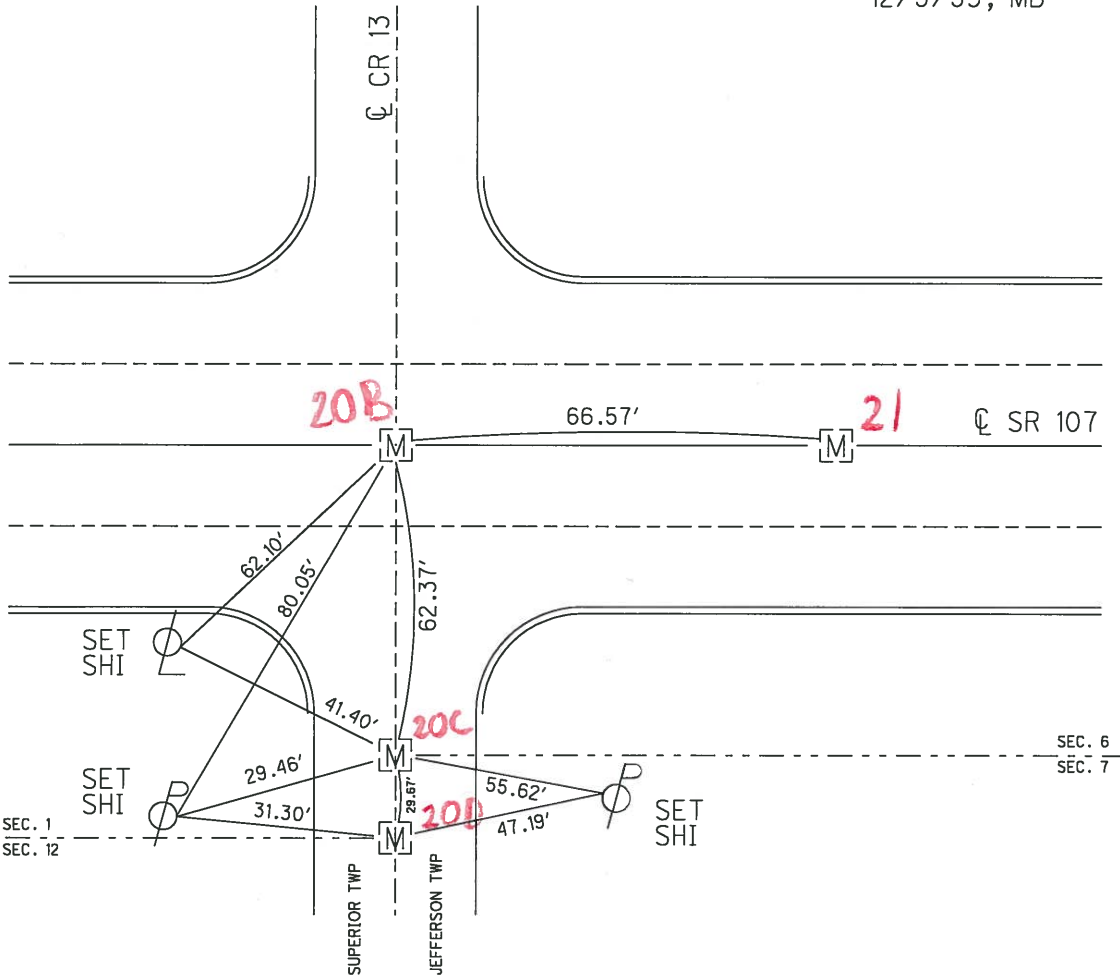
TYPE MONUMENT _____ MONBOX _____
 ON SURFACE - ~~BELOW~~ ON _____
 LEFT - \odot PAV'T - RIGHT ON _____
 - TO - EDGE PAVEMENT
 S.L.M. 533+35.29



GRID: NORTHING: _____ EASTING: _____

RECORD: P.O.C.
 STA 533+35.29

NOTE:
 OPENED & CHISELED
 "+" ON LID FOR POINT
 12/9/93, MB



O.D.O.T. DISTRICT 2 SURVEY OFFICE

PERSONNEL _____

REFERENCE NO. 20

SHEET 2 OF 5

NOTES BARNHISEL

H.C. " "

R.C. KUSZ

DATE 12-9-93

WEATHER cloudy

TEMP. +34°

ROUTE 107 & Co. Rd #13

COUNTY WILLIAMS

TOWNSHIP Superior & Jefferson

SECTION 1 & 12 / 6 & 7

T. 7 N. R. 2 E. / R3E

opened & chiseled
'+' on 410 for point

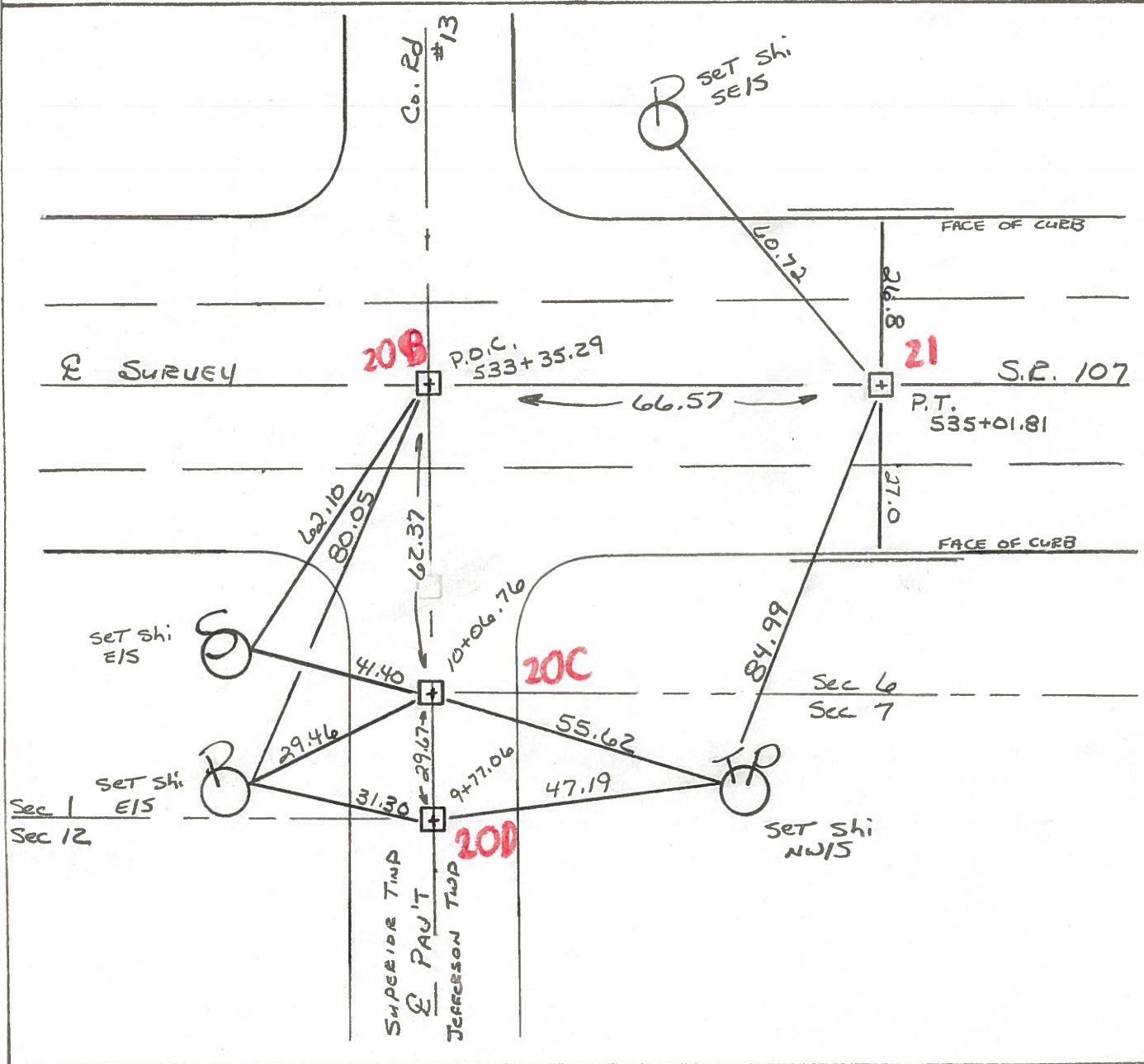
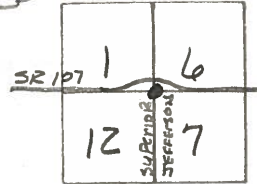
TYPE MONUMENT Mon. Boxes

ON SURFACE - ~~WOOD~~ yes ALL

~~CONCRETE~~ - CONCRETE yes ALL

TO EDGE PAVEMENT

S.L.M. LISTED BELOW (10,10)



O.D.O.T. DISTRICT 2 SURVEY OFFICE

PERSONNEL

REFERENCE NO. 21
~~20~~

SHEET 10 OF 10

NOTES BARNHEISL

DATE 12-9-93

ROUTE S.R. #107

H.C. BARNHEISL

WEATHER CLOUDY

COUNTY WILLIAMS

R.C. KUSZ

TEMP. +34°

TOWNSHIP SUPERIOR/JEFFERSON

SECTION 18|2/6&7

T 7 N R 2 E/R 3 E

TYPE MONUMENT MON. BOXES OPENED & CHISELED
+ ON LID FOR POINT

ON SURFACE - ~~BELOW~~ YES (ALL)

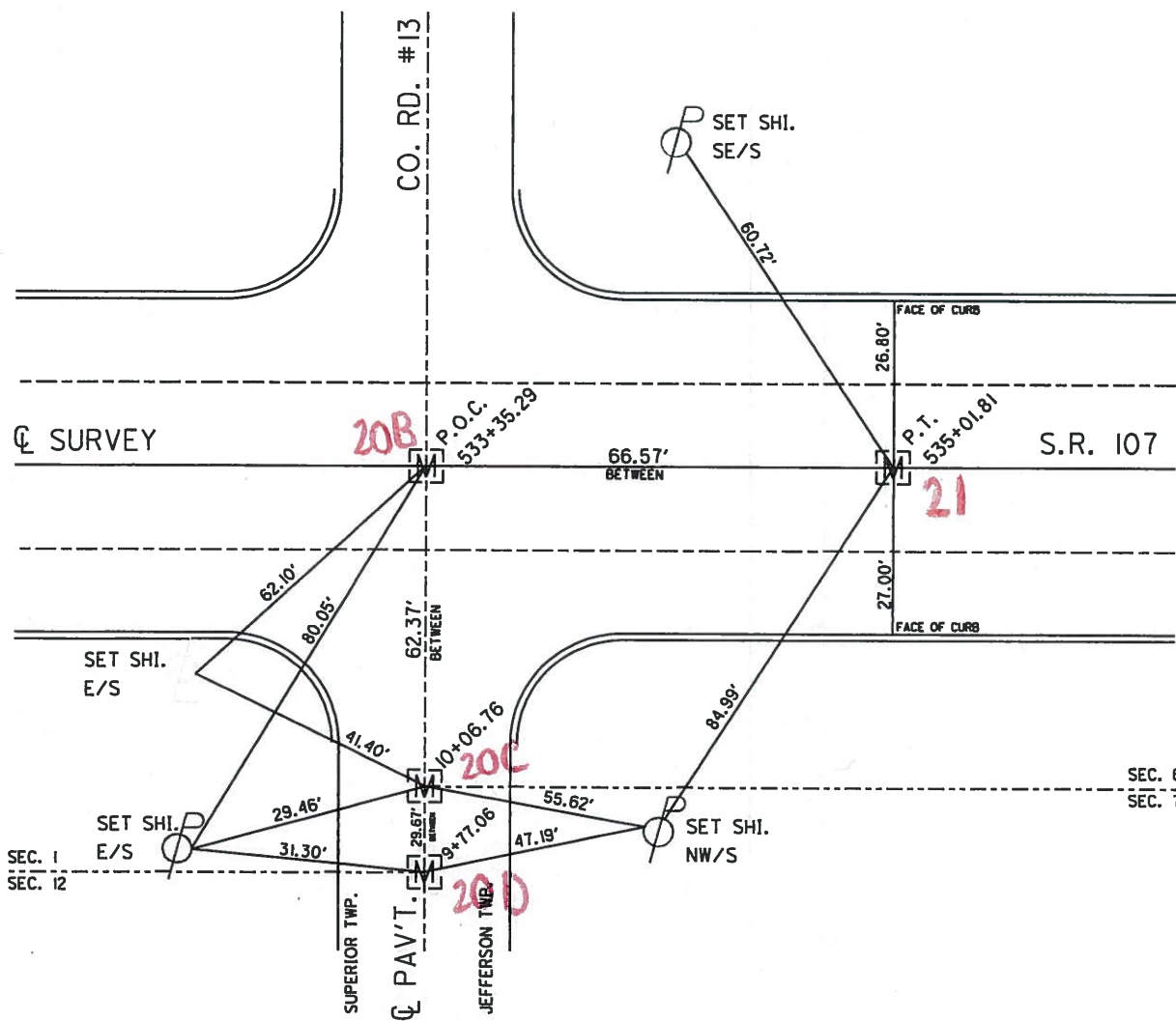
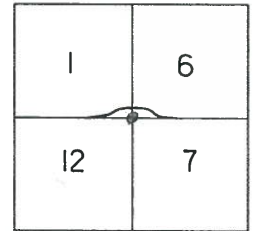
~~LEFT~~ - Q PAV'T - ~~RIGHT~~ YES (ALL)

TO EDGE PAVEMENT

S.L.M. LISTED BELOW

533+35

535+01



O.D.O.T. DISTRICT 2 SURVEY OFFICE (USE ONLY)

PERSONNEL

REFERENCE NO. ~~20 A~~

SHEET 12 OF 13

NOTES BARNHISEL

DATE 12/9/93

ROUTE SR 107

H.C. BARNHISEL

WEATHER CLOUDY

COUNTY WILLIAMS

R.C. KUSZ

TEMP. 34°

TOWNSHIP SUPERIOR

SECTION 1

T 7 N R 2 E

TYPE MONUMENT MONBOX

ON SURFACE - ~~BELOW~~ ON

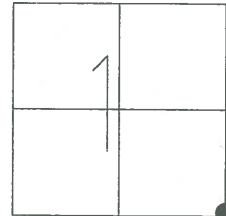
LEFT - C PAV'T - RIGHT ON

- TO - EDGE PAVEMENT

S.L.M. 533+35.29

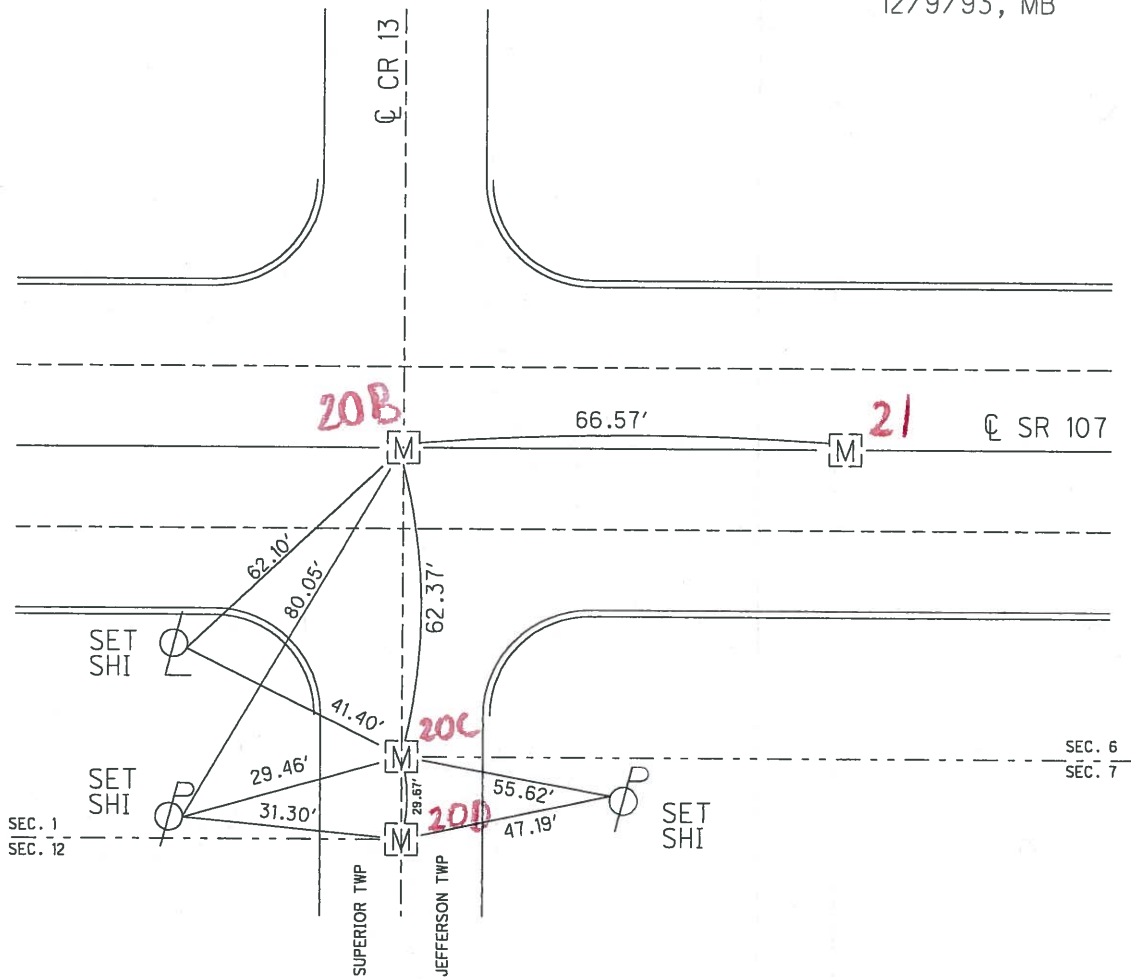
GRID: NORTHING:

EASTING:



RECORD: P.O.C.
STA 533+35.29

NOTE:
OPENED & CHISELED
" + " ON LID FOR POINT
12/9/93, MB



O.D.O.T. DISTRICT 2 SURVEY OFFICE

PERSONNEL _____

REFERENCE NO. 20

SHEET 2 OF 5

NOTES BARNHISEC

H.C. " "

R.C. Kusz

DATE 12-9-93

WEATHER cloudy

TEMP. +34°

ROUTE 107 & Co. Rd #13

COUNTY WILLIAMS

TOWNSHIP Superior & Jefferson

SECTION 1 & 12 / 6 & 7

T 7 N 2 E / R3E

TYPE MONUMENT Mon. Boxes

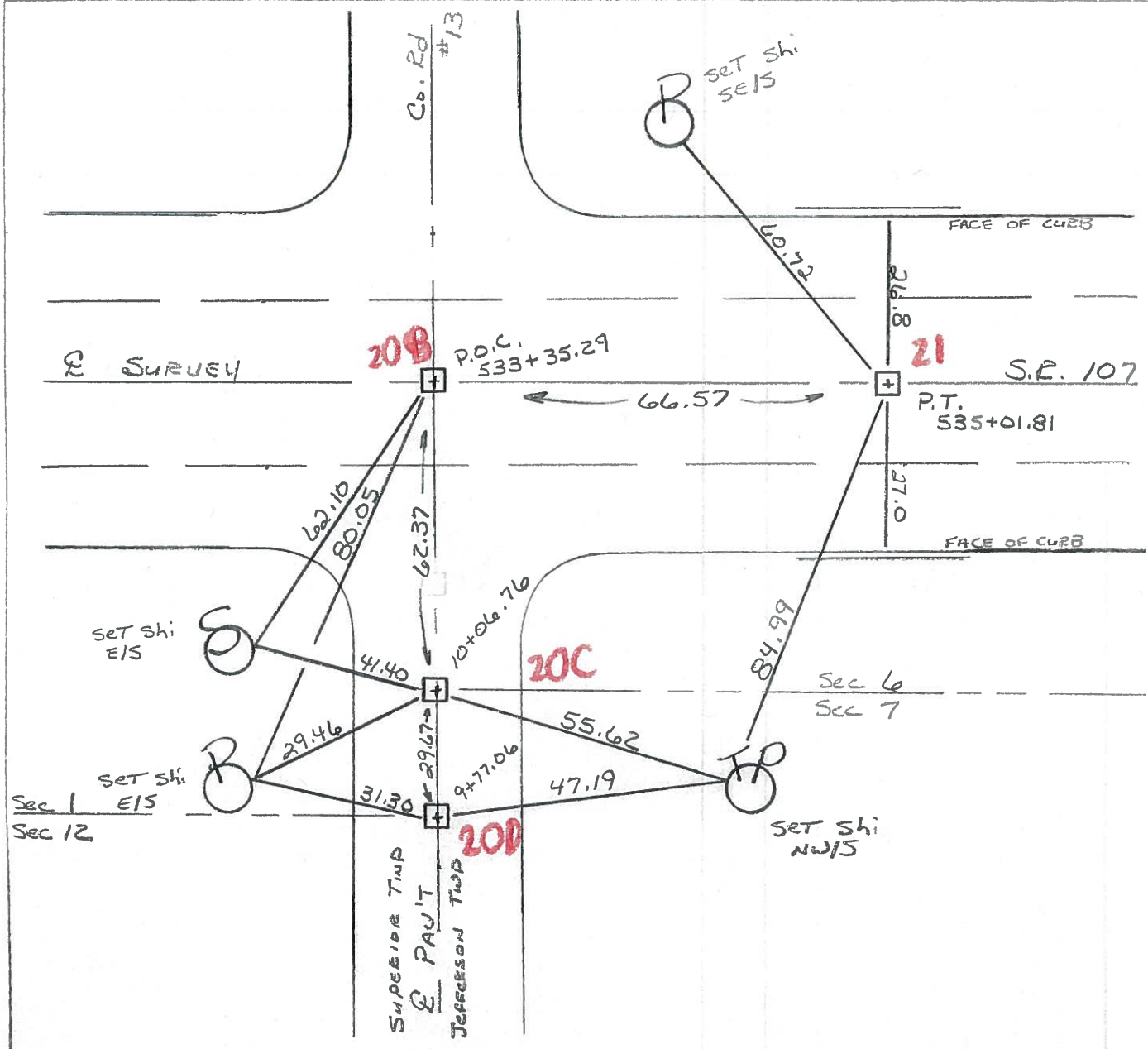
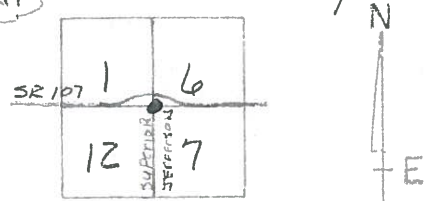
ON SURFACE - ~~WOOD~~ yes ALL

~~PAV'T.~~ yes ALL

TO EDGE PAVEMENT

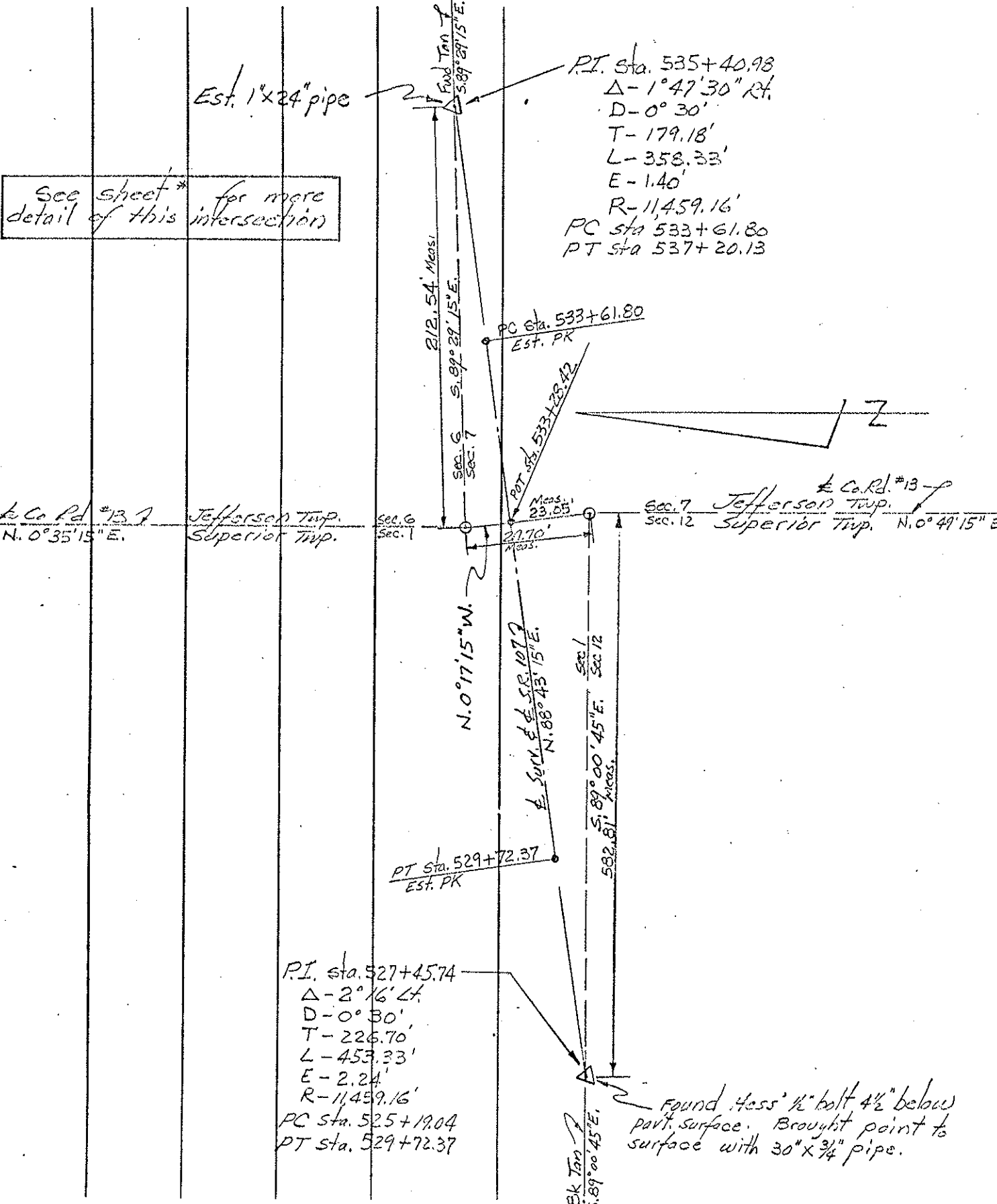
S.L.M. LISTED BELOW (10,10)

OPENED & chiseled
" + " ON L/D FOR POINT



PERSONNEL	TITLE	PERSONNEL	TITLE	COUNTY	DATE
Beach				WIS	Nov. 68
Newson				S. R. 107	WEATHER
Knape				SEC. 8.96 - 11.05	TEMP.
Wise					

DESCRIPTION ALIGNMENT JOB NO. 02734



PERSONNEL	TITLE	PERSONNEL	TITLE	COUNTY	DATE	WEATHER	TEMP
Beach				WI 1225	22 Nov. 68		
Newcomb							
Knafe				S. R. 107			
Wise				SEC. 8.96-11.05			

DESCRIPTION _____ ALIGNMENT _____ JOB NO. 02734

