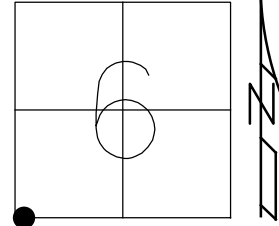


O.D.O.T. DISTRICT 2 SURVEY OFFICE (USE ONLY)

PERSONNEL _____ REFERENCE NO. 21 SHEET 28 OF 31
 NOTES JAMES DATE 3/4/19 ROUTE SR 107
 H.C. LEU WEATHER WINDY COUNTY WILLIAMS
 R.C. JAMES TEMP. 14° TOWNSHIP JEFFERSON
 DWG BY NIESE PID 101346 SECTION 6
 T 7 N R 3 E

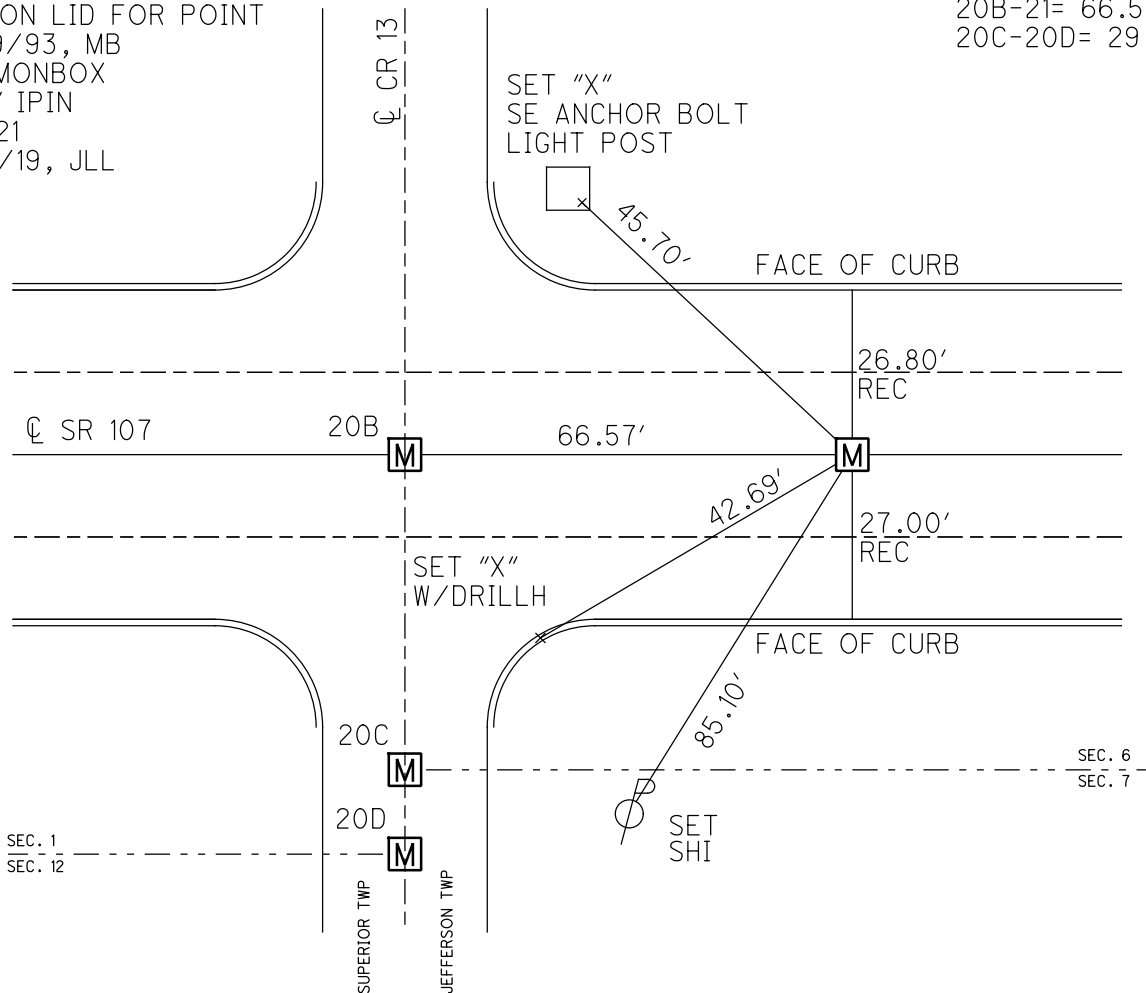
TYPE MONUMENT MONBOX W/1" IPIN
 ON SURFACE - ~~BELOW~~ ON
 OFFSET ☉ PAVEMENT ON LT : RT
- TO - EDGE PAVEMENT
 STATION: 535+01.81



HORZ. DATUM: NAD83(2011) GEOID: 2012A
 GRID: NORTHING: 706290.114 EASTING: 1401173.047

RECORD: P.T.
 STA. 535+01.81
 OPENED & CHISELED
 "+" ON LID FOR POINT
 12/9/93, MB
 FD MONBOX
 W/1" IPIN
 REF21
 3/4/19, JLL

DIST.
 20B-20C= 62.34'
 20B-21= 66.55'
 20C-20D= 29.67'

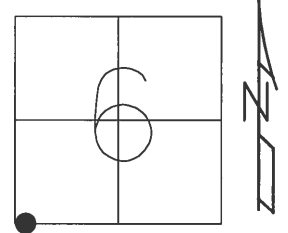


O.D.O.T. DISTRICT 2 SURVEY OFFICE (USE ONLY)

PERSONNEL _____ REFERENCE NO. 21 SHEET 25 OF 25

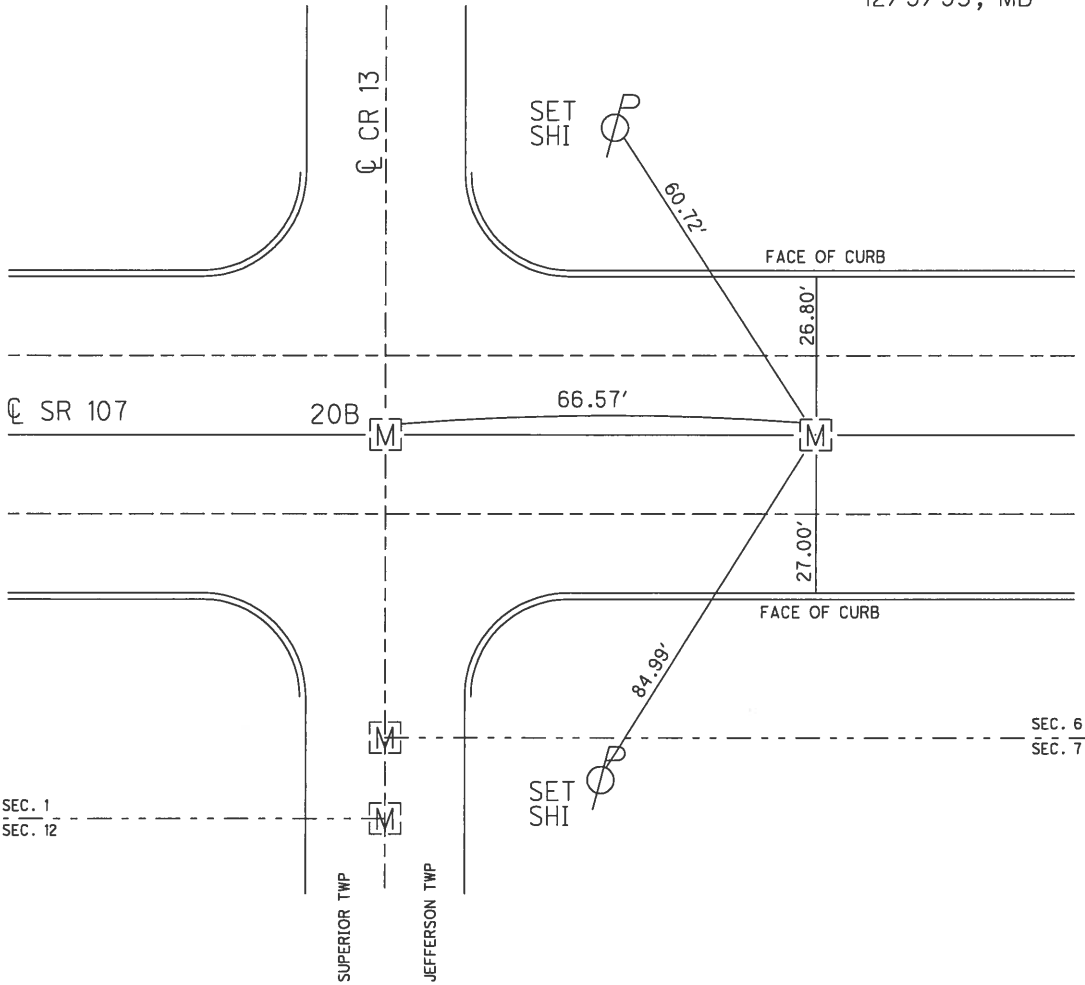
NOTES BARNHISEL DATE 12/9/93 ROUTE SR 107
 H.C. BARNHISEL WEATHER CLOUDY COUNTY WILLIAMS
 R.C. KUSZ TEMP. 34° TOWNSHIP JEFFERSON
 SECTION 6
T 7 N R 3 E

TYPE MONUMENT MONBOX
 ON SURFACE - ~~BELOW~~ ON _____
 LEFT - ☉ PAV'T - RIGHT ON _____
 - TO - EDGE PAVEMENT
 S.L.M. 535+01.81
 GRID: NORTHING: _____ EASTING: _____



RECORD: P.T.
 STA 535+01.81

NOTE:
 OPENED & CHISELED
 "+" ON LID FOR POINT
 12/9/93, MB



O.D.O.T. DISTRICT 2 SURVEY OFFICE

PERSONNEL

REFERENCE NO. 21
~~20~~

SHEET 10 OF 10

NOTES BARNHEISEL

DATE 12-9-93

ROUTE S.R.#107

H.C. BARNHEISEL

WEATHER CLOUDY

COUNTY WILLIAMS

R.C. KUSZ

TEMP. +34°

TOWNSHIP SUPERIOR/JEFFERSON

SECTION 18|2/6&7

T 7 N R 2 E/R 3 E

TYPE MONUMENT MON. BOXES

OPENED & CHISELED
** ON LID FOR POINT

ON SURFACE - ~~BELOW~~ YES (ALL)

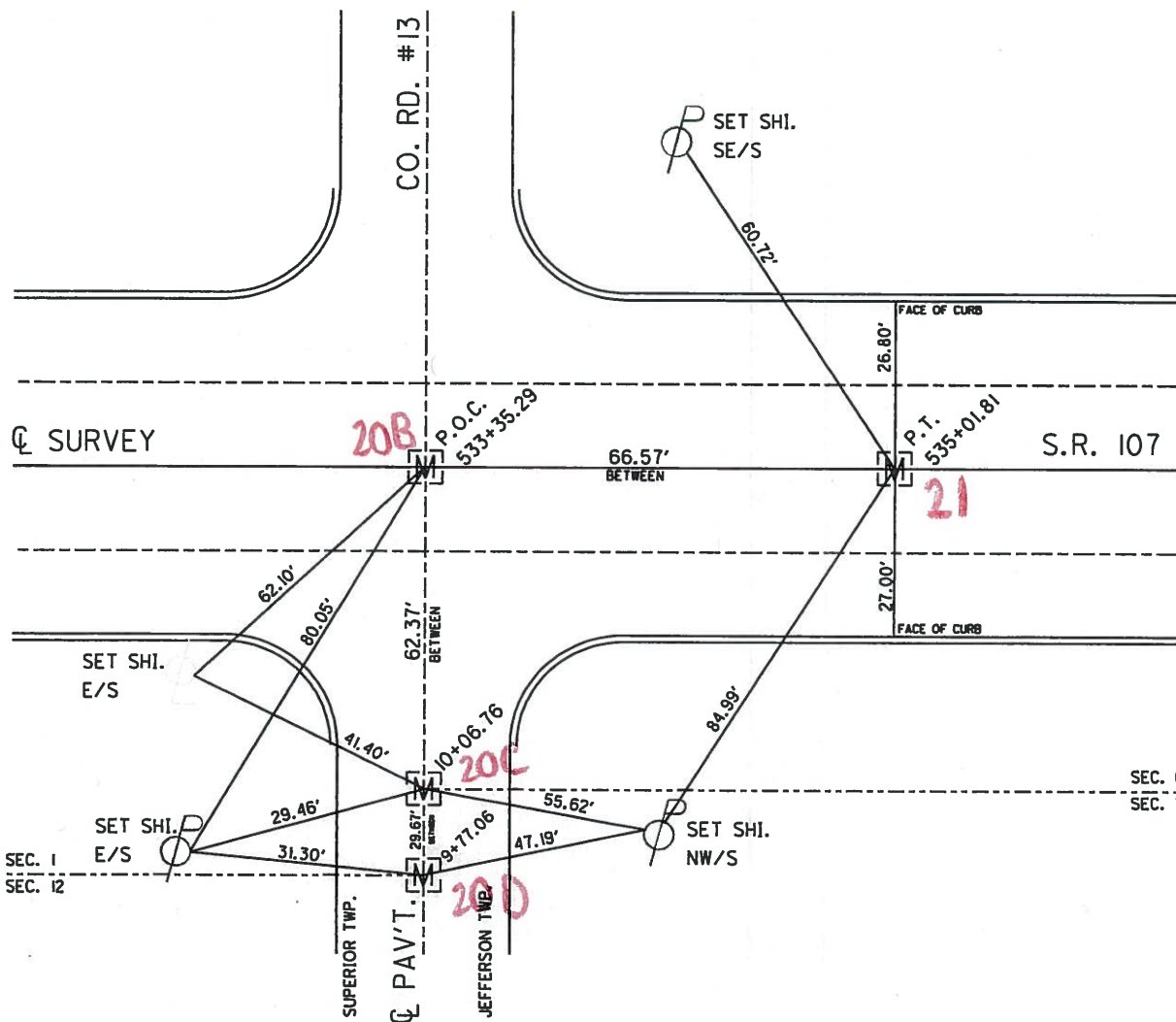
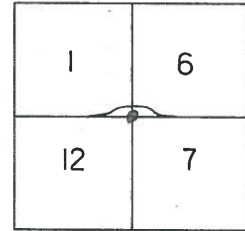
~~LEFT - Q~~ PAV'T - ~~RIGHT~~ YES (ALL)

TO EDGE PAVEMENT

S.L.M. LISTED BELOW

533+35

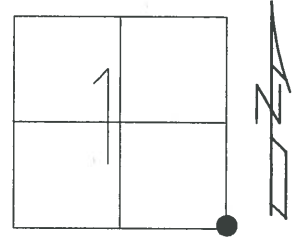
535+01



O.D.O.T. DISTRICT 2 SURVEY OFFICE (USE ONLY)

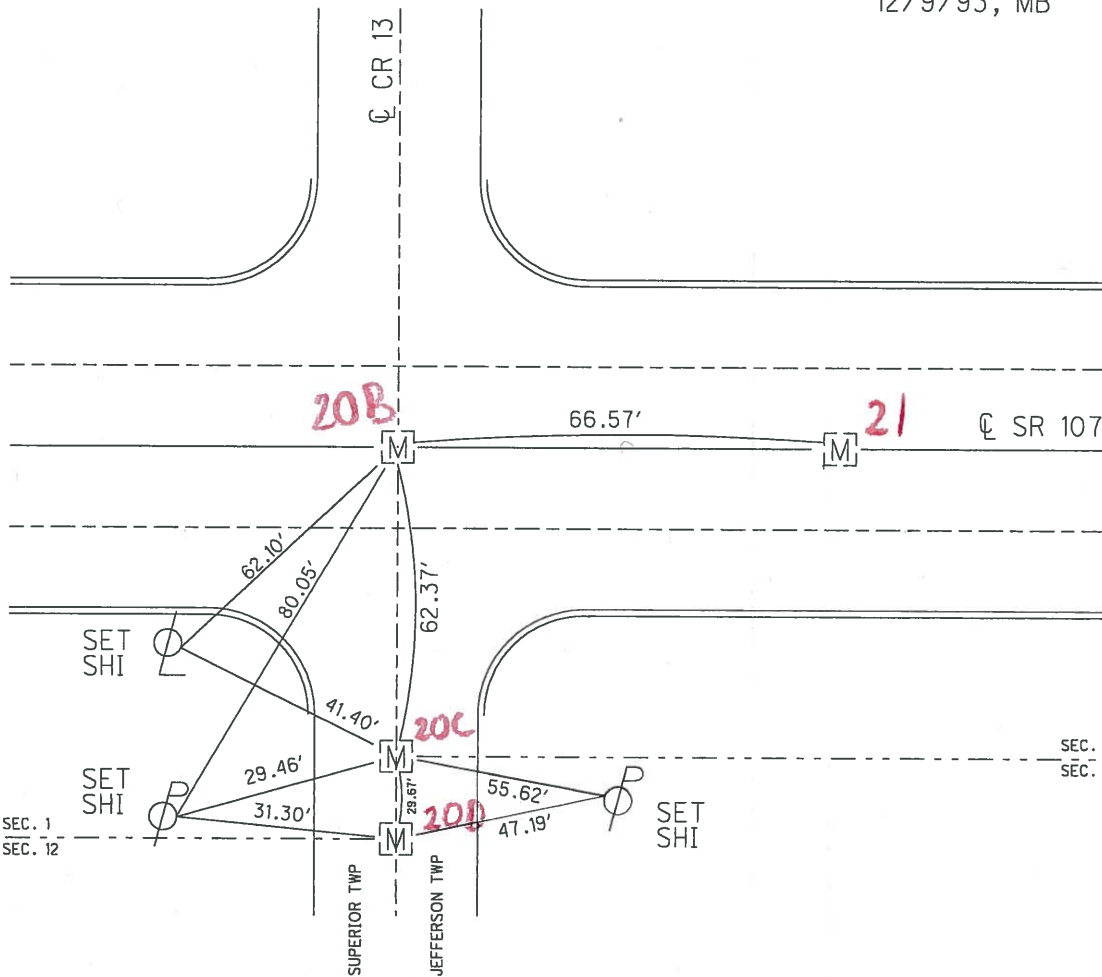
PERSONNEL _____ REFERENCE NO. ~~20 A~~ SHEET 12 OF 13
 NOTES BARNHISEL DATE 12/9/93 ROUTE SR 107
 H.C. BARNHISEL WEATHER CLOUDY COUNTY WILLIAMS
 R.C. KUSZ TEMP. 34° TOWNSHIP SUPERIOR
 SECTION 1
 T 7 N R 2 E

TYPE MONUMENT _____ MONBOX _____
 ON SURFACE - ~~BELOW~~ ON _____
 LEFT - \odot PAV'T - RIGHT ON _____
 _____ TO _____ EDGE PAVEMENT
 S.L.M. 533+35.29
 GRID: NORTHING: _____ EASTING: _____



RECORD: P.O.C.
 STA 533+35.29

NOTE:
 OPENED & CHISELED
 "+" ON LID FOR POINT
 12/9/93, MB



O.D.O.T. DISTRICT 2 SURVEY OFFICE

PERSONNEL

REFERENCE NO. 20

SHEET 2 OF 5

NOTES BARNHISEL

H.C. " "

R.C. KUSZ

DATE 12-9-93

WEATHER cloudy

TEMP. +34°

ROUTE 107 & Co. Rd #13

COUNTY WILLIAMS

TOWNSHIP Superior & Jefferson

SECTION 1 & 12 / 6 & 7

T 7 N R 2 E / R3E

TYPE MONUMENT Mon. Boxes

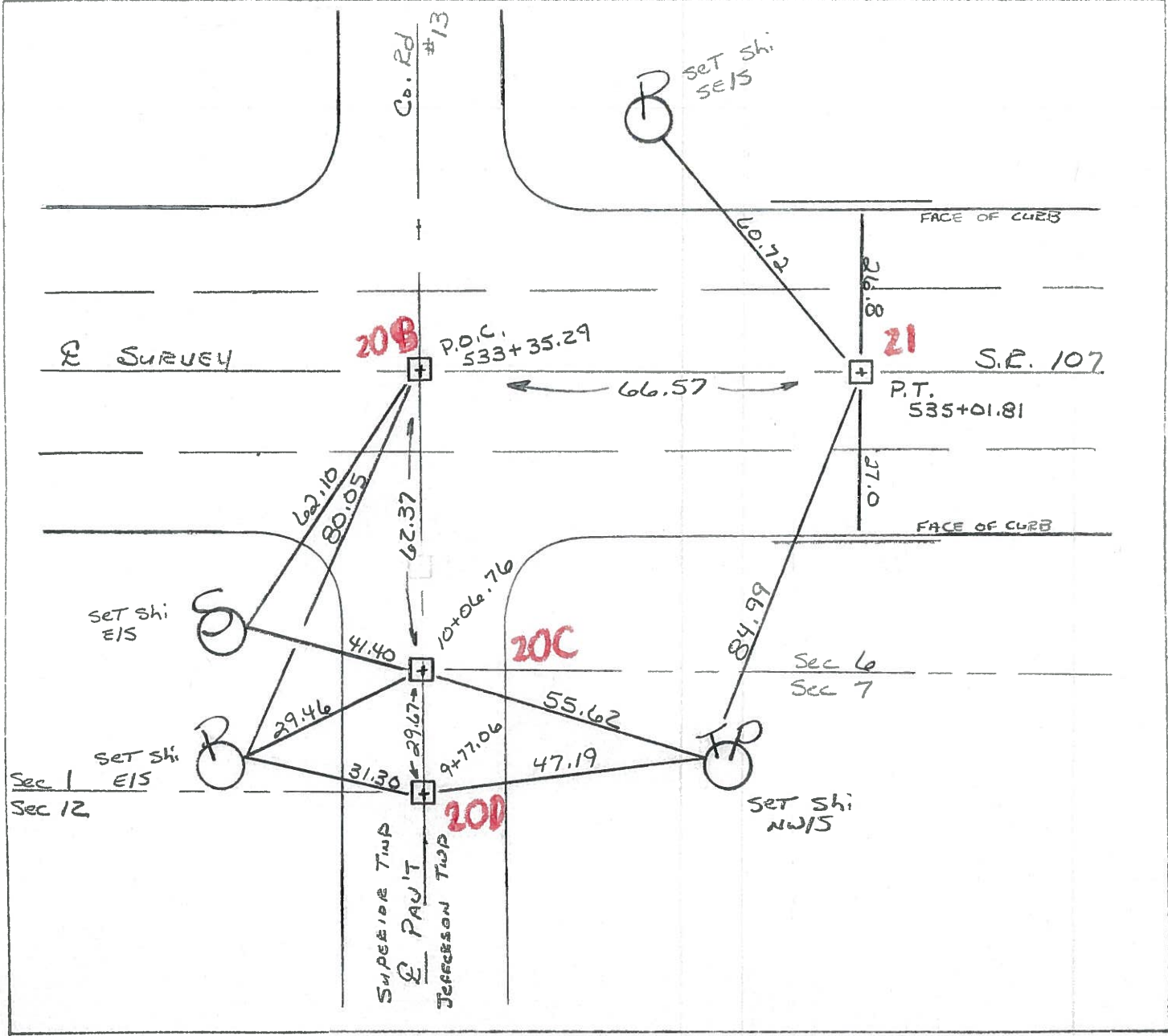
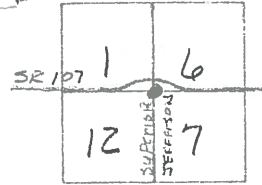
ON SURFACE - ~~IRON~~ yes ALL

~~CONCRETE~~ - PAV'T. - ~~PAV'T.~~ yes ALL

TO EDGE PAVEMENT

S.L.M. LISTED BELOW (10, 10)

opened & chiseled
" + " on 4/10 FOR POINT



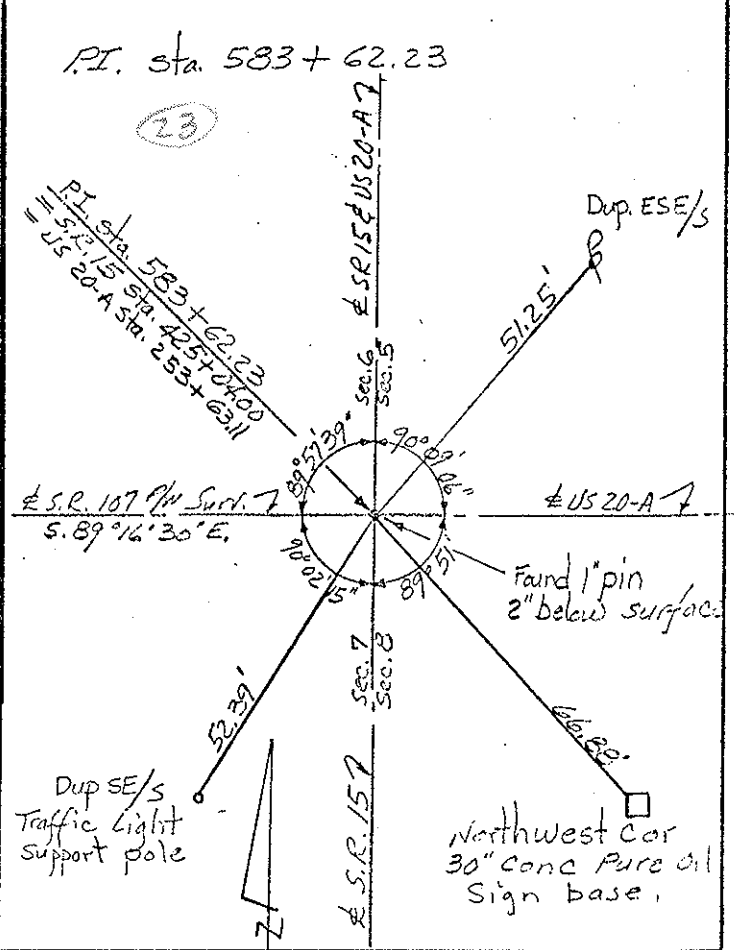
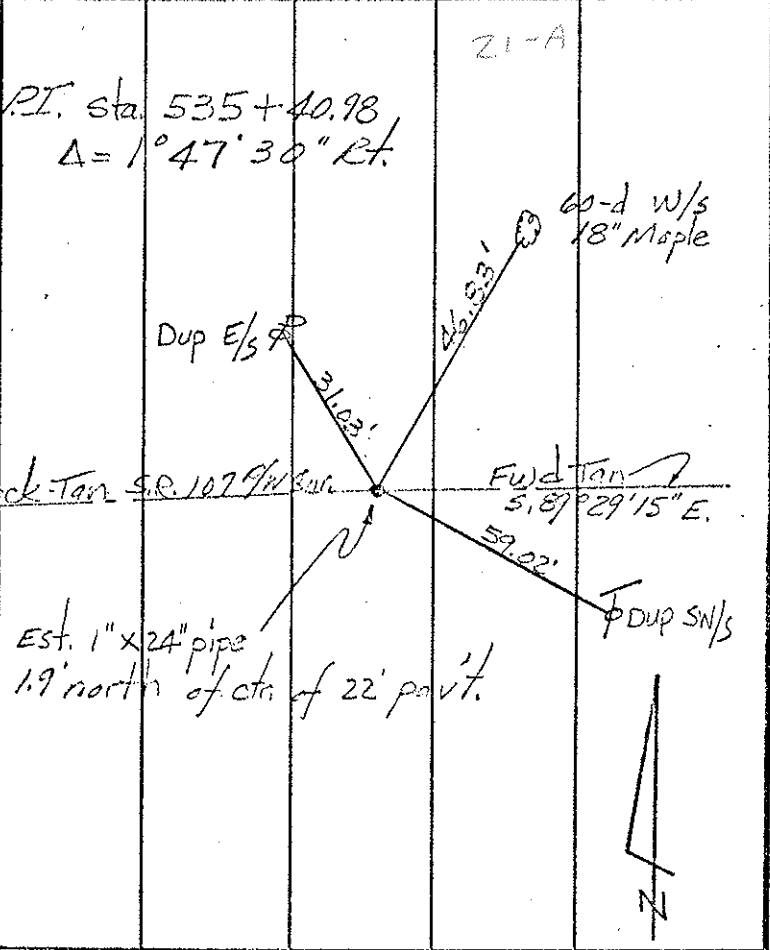
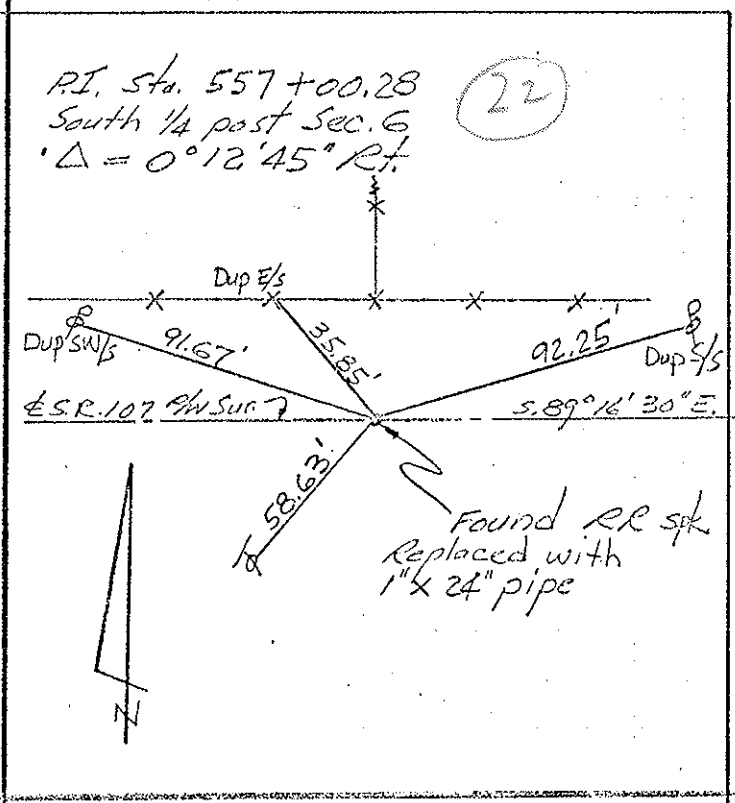
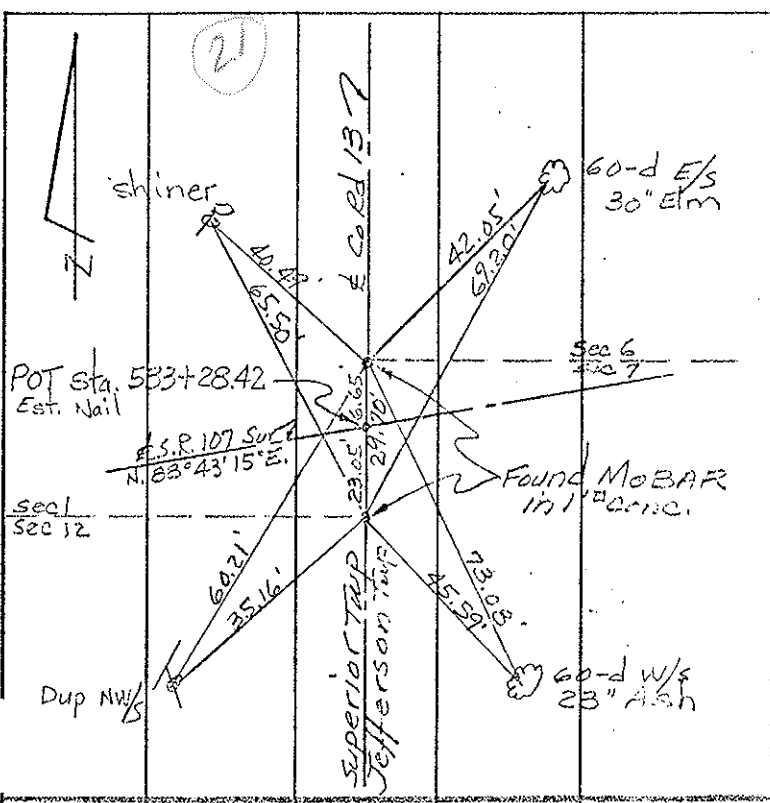
PERSONNEL	TITLE	PERSONNEL	TITLE
Red Beach			
Newcomb			
Knappe			
Wise			

COUNTY Williams DATE 17 Mar '69

S. R. 107 WEATHER _____

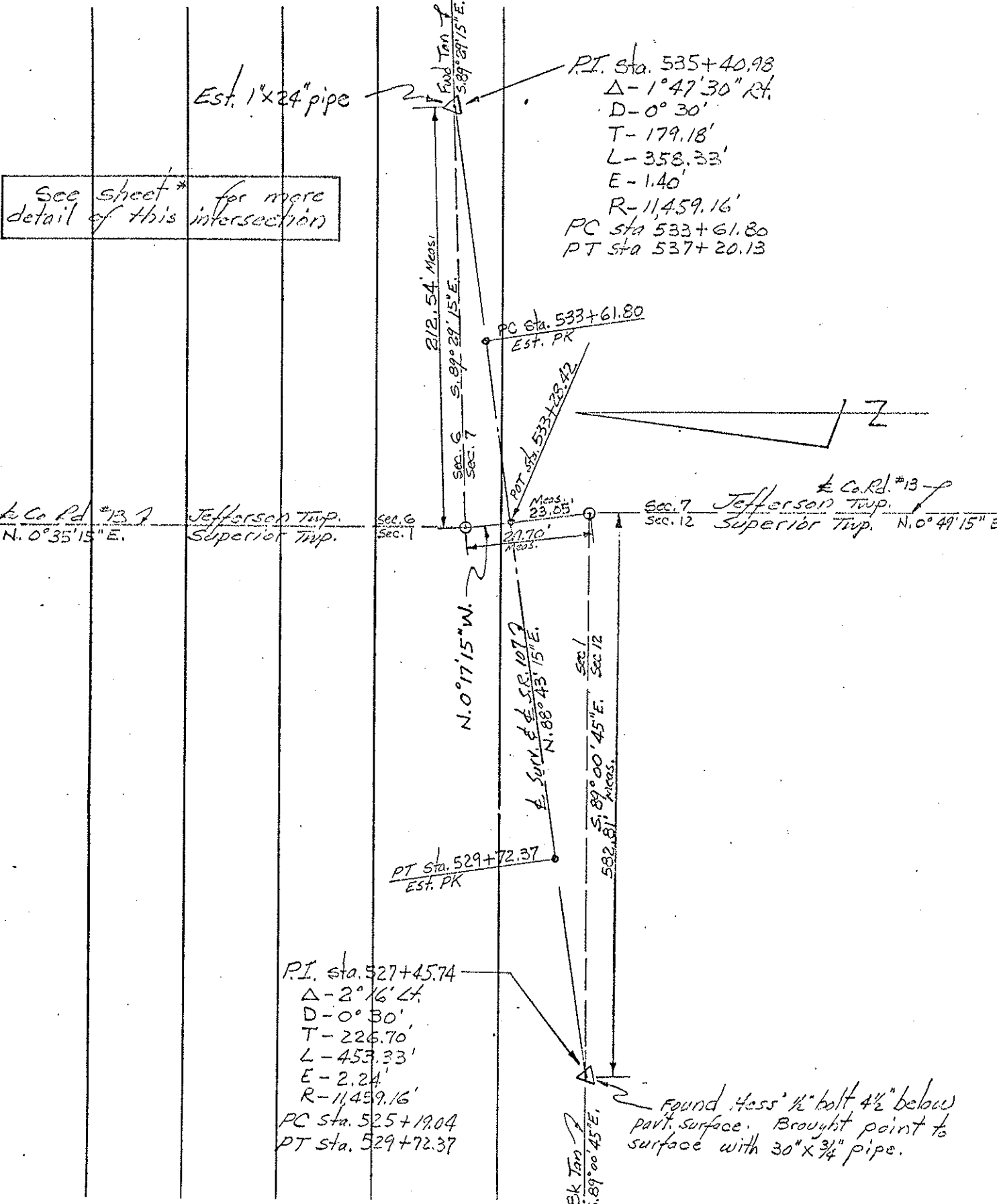
SEC. 8.95-11.05 TEMP. _____

DESCRIPTION CONTROL POINTS JOB NO. 02734



PERSONNEL	TITLE	PERSONNEL	TITLE	COUNTY	DATE
Beach				WIS	Nov. 68
Newson				S. R. 107	WEATHER
Knape				SEC. 8.96 - 11.05	TEMP.
Wise					

DESCRIPTION ALIGNMENT JOB NO. 02734



See sheet * for more detail of this intersection

Found Hess' 1/2" bolt 4 1/2" below pav't. surface. Brought point to surface with 30" x 3/4" pipe.