

O.D.O.T. DISTRICT 2 SURVEY OFFICE (USE ONLY)

PERSONNEL

REFERENCE NO. 21 A

SHEET 29 OF 31

NOTES JAMES

DATE 3/5/19

ROUTE SR 107

H.C. LEU

WEATHER WINDY

COUNTY WILLIAMS

R.C. JAMES

TEMP. 16°

TOWNSHIP JEFFERSON

DWG BY NIESE

PID 101346

SECTION 6

T 7 N R 3 E

TYPE MONUMENT MONBOX W/ 1" IPIN

ON SURFACE - ~~BELOW~~ ON

OFFSET ☉ PAVEMENT ON LT : RT

21.0' TO RT EDGE PAVEMENT

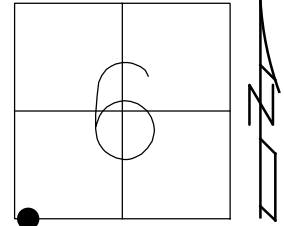
STATION: 535+40.32

HORZ. DATUM: NAD83(2011)

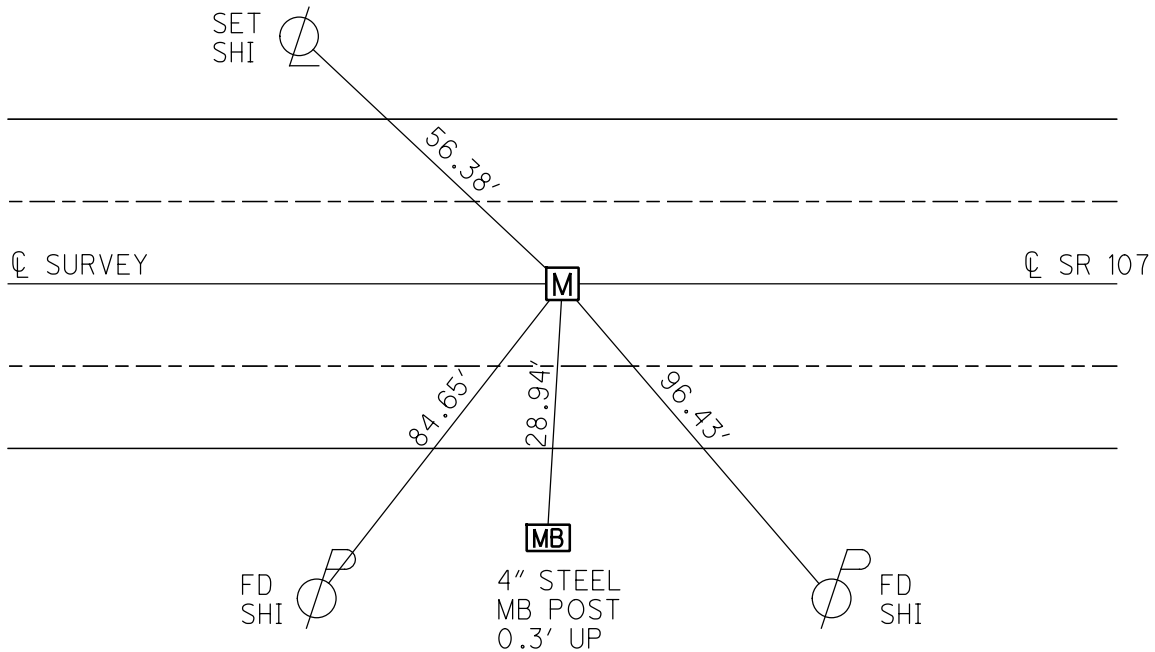
GEOID: 2012A

GRID: NORTHING: 706269.180

EASTING: 1401309.995



RECORD: P.C.
 OPENED & CHISELED
 "+" ON LID FOR POINT
 12/9/93, MB
 FD MONBOX
 W/1" IPIN
 REFA21
 3/5/19, JLL



O.D.O.T. DISTRICT 2 SURVEY OFFICE

PERSONNEL _____

REFERENCE NO. 21-A

SHEET 3 OF 5

NOTES BAENHISEL

H.C. " "

R.C. KUSZ

DATE 12-9-93

WEATHER Cloudy

TEMP. +34°

ROUTE 107

COUNTY WILLIAMS

TOWNSHIP JEFFERSON

SECTION 6

T 7 N R 3 E

TYPE MONUMENT MON BOX

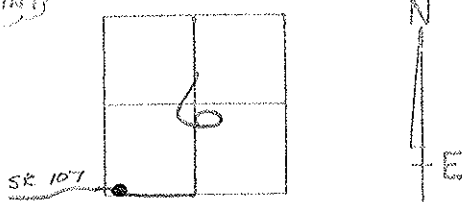
opened & chiseled
"4" on LID FOR POINT

ON SURFACE - ~~LOW~~ YES

~~PAV'T.~~ YES

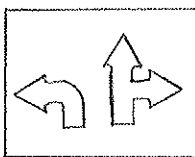
21.0 TO RT EDGE PAVEMENT

S.L.M. 535 + 40.32

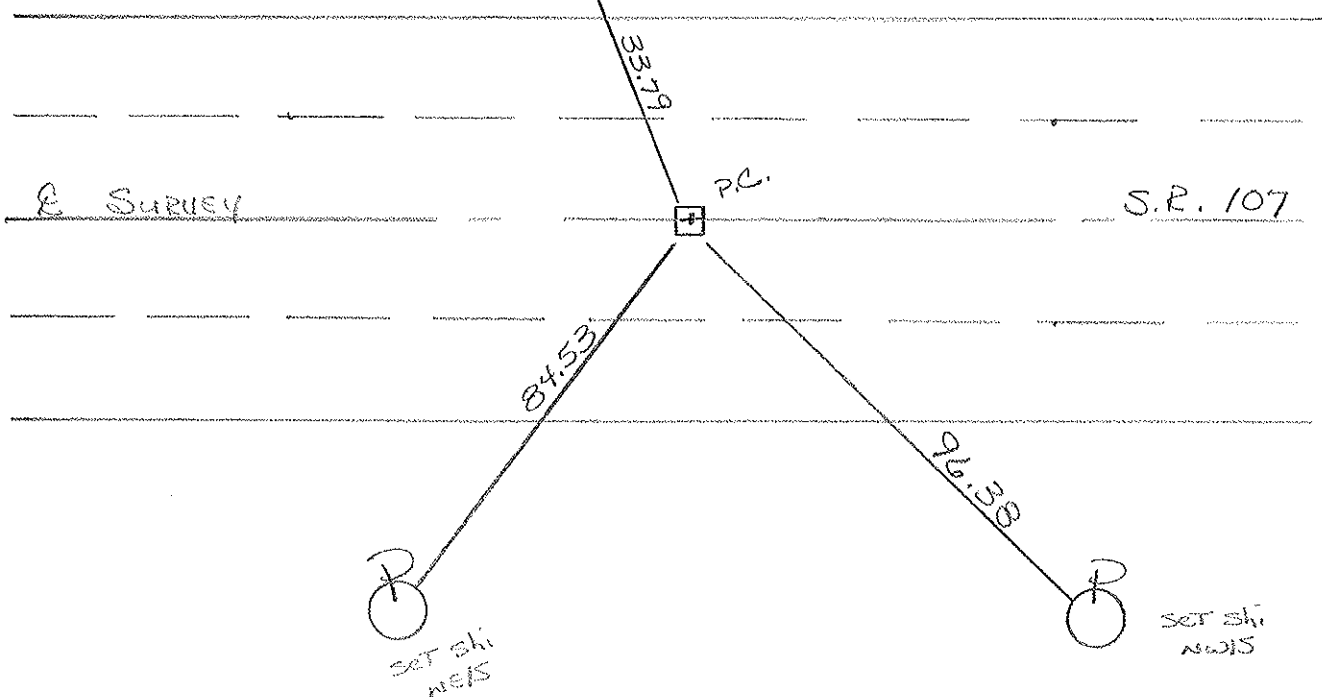


RECORD:

P.C.



CUT NOTCH
1' up SIGN POST



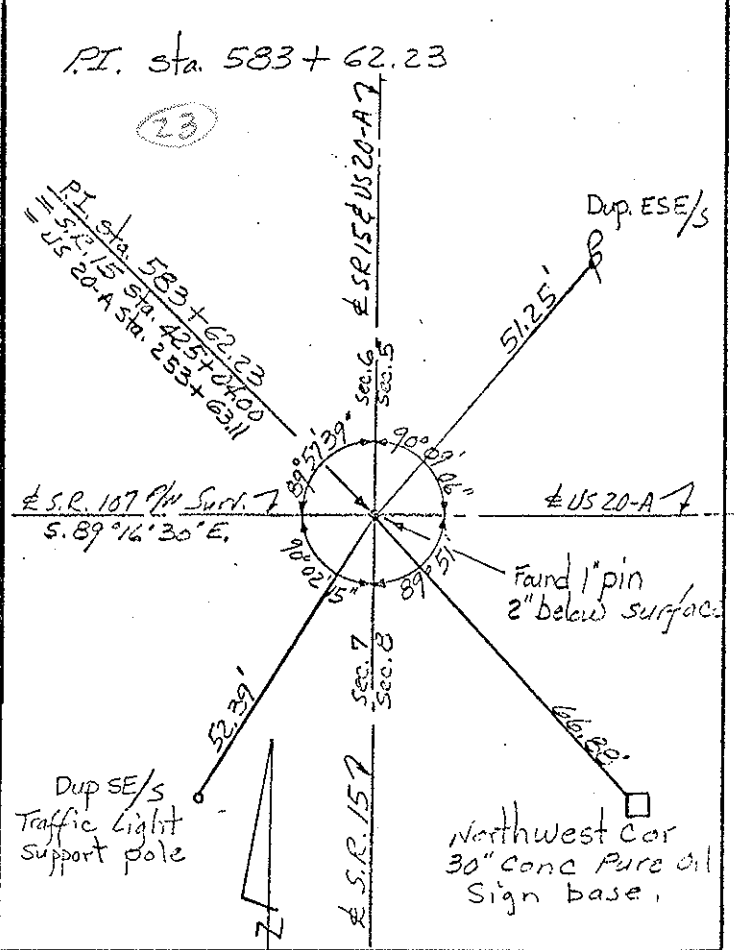
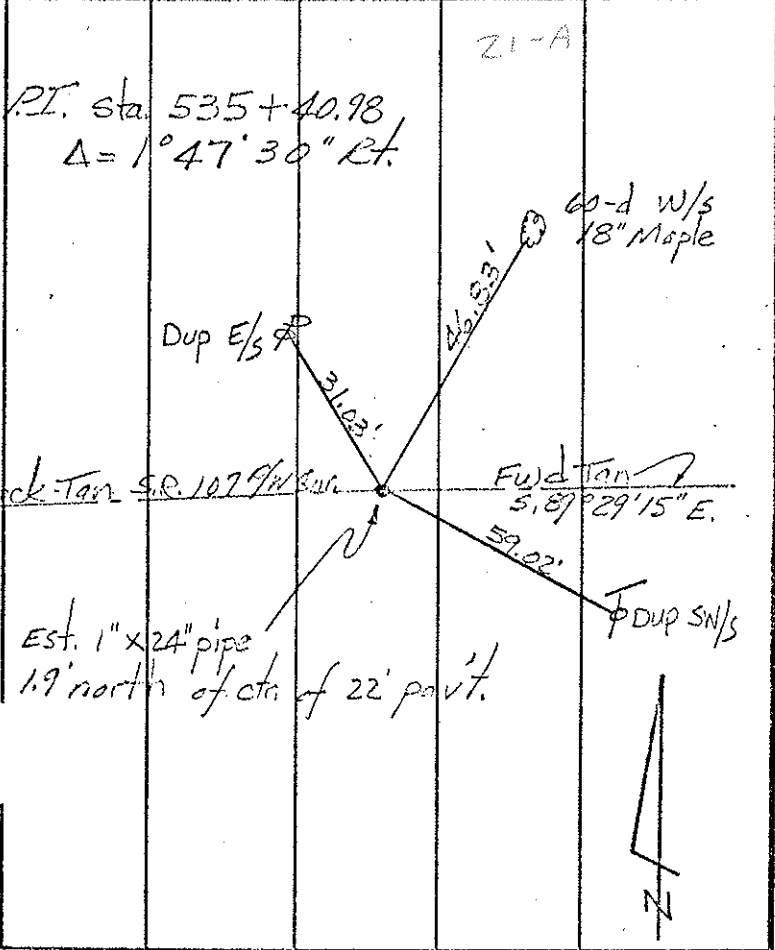
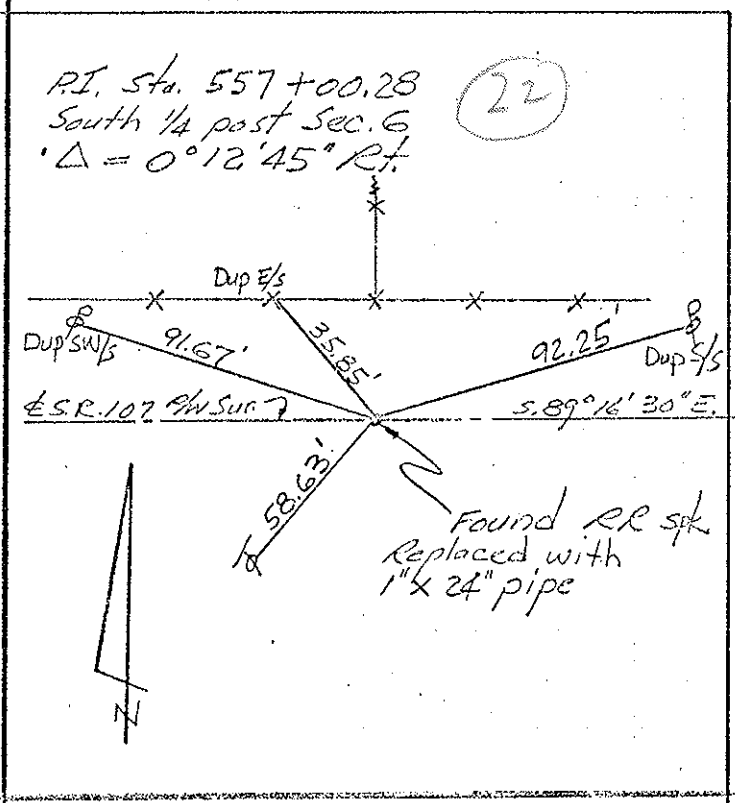
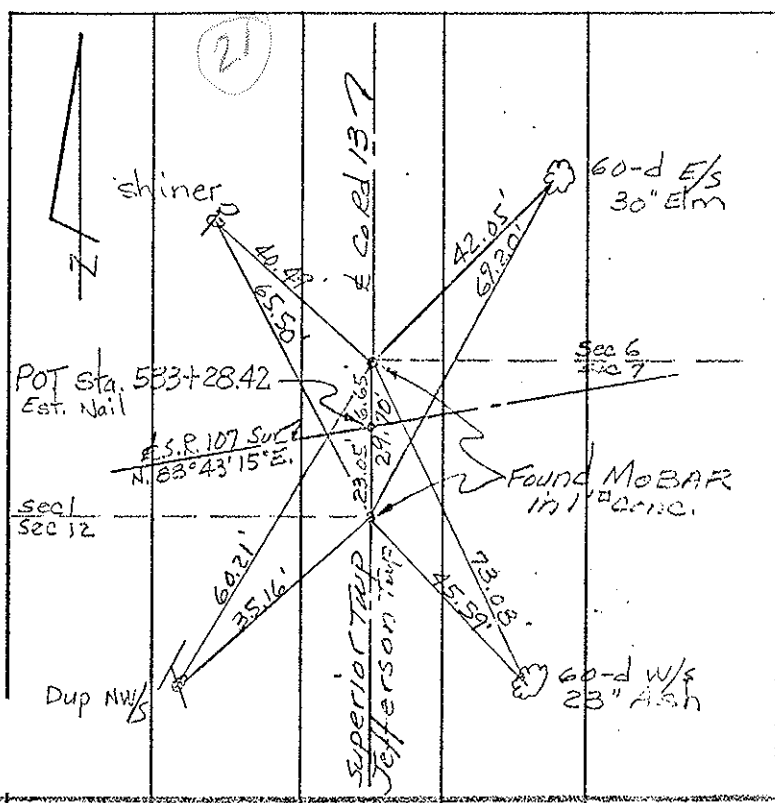
PERSONNEL	TITLE	PERSONNEL	TITLE
Red Beach			
Newcomb			
Knape			
Wise			

COUNTY Williams DATE 17 Mar '69

S. R. 107 WEATHER _____

SEC. 8.95-11.05 TEMP. _____

DESCRIPTION CONTROL POINTS JOB NO. 02734



PERSONNEL	TITLE	PERSONNEL	TITLE	COUNTY	DATE
Beach				WIS	Nov. 68
Newson				S. R. 107	WEATHER
Knape				SEC. 8.96 - 11.05	TEMP.
Wise					

DESCRIPTION ALIGNMENT JOB NO. 02734

