



STATE OF OHIO

DEPARTMENT OF TRANSPORTATION

PROJECT DESCRIPTION

IMPROVEMENT OF INTERSECTION ON U.S. ROUTE 127, STATE ROUTE 15 AND RELOCATION OF COUNTY ROAD E.

LIMITED ACCESS

THIS IMPROVEMENT ON US ROUTE 127 EAST IS ESPECIALLY DESIGNED FOR THROUGH TRAFFIC AND HAS BEEN DECLARED A LIMITED ACCESS HIGHWAY OR FREEWAY BY ACTION OF THE DIRECTOR IN ACCORDANCE WITH THE PROVISIONS OF SECTION 5511.02 OF THE REVISED CODE OF OHIO.

1997 SPECIFICATIONS

THE STANDARD SPECIFICATIONS OF THE STATE OF OHIO, DEPARTMENT OF TRANSPORTATION, INCLUDING CHANGES AND SUPPLEMENTAL SPECIFICATIONS LISTED IN THE PROPOSAL SHALL GOVERN THIS IMPROVEMENT.

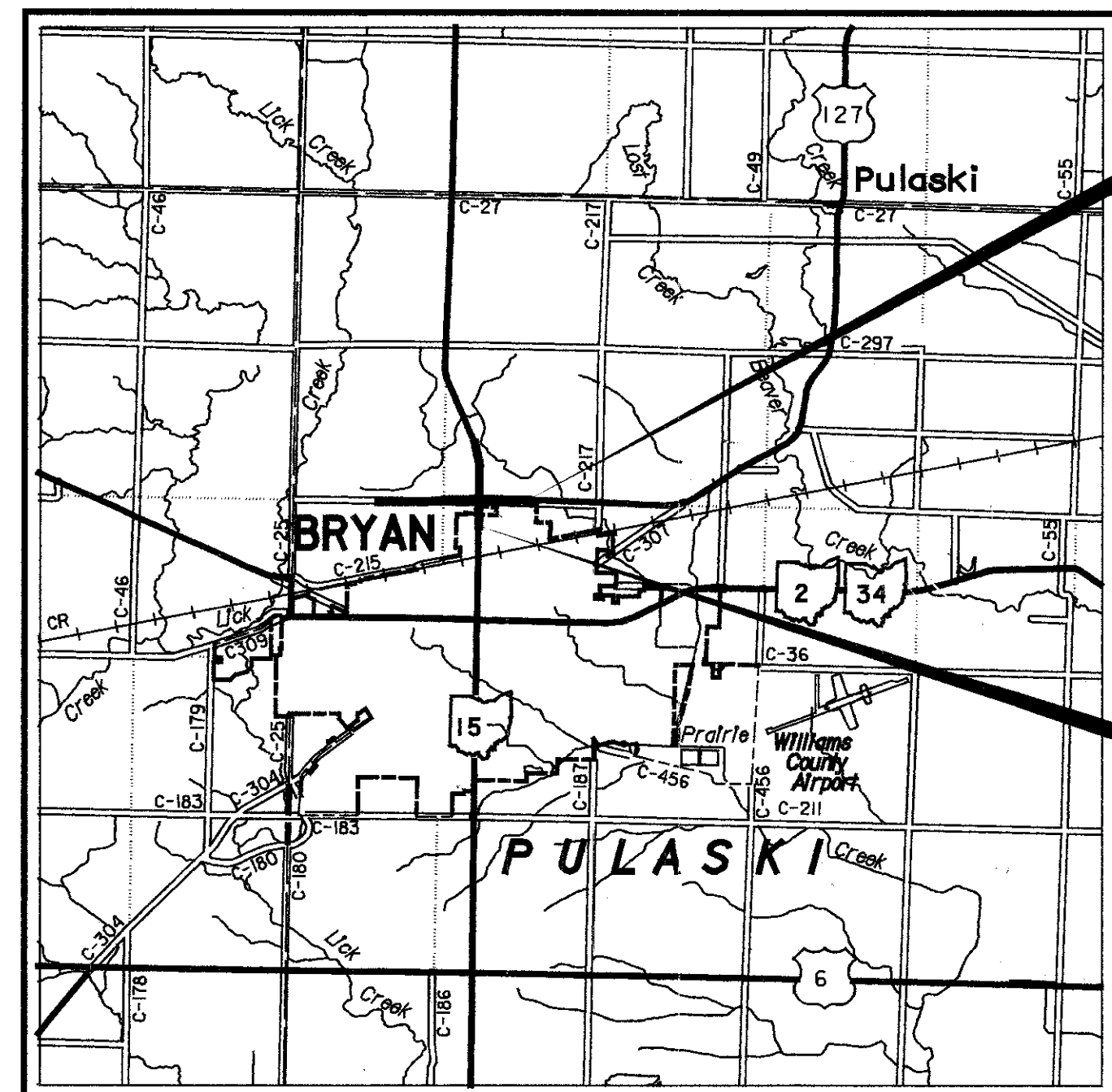
I HEREBY APPROVE THESE PLANS AND DECLARE THAT THE MAKING OF THIS IMPROVEMENT WILL NOT REQUIRE THE CLOSING OF THE HIGHWAY EXCEPT FOR CR. E, AS NOTED ON SHEET 13, AND THAT THE PROVISIONS FOR THE MAINTAINANCE AND SAFETY OF TRAFFIC WILL BE AS SET FORTH ON PLANS AND ESTIMATES.

WIL-127-6.453 (4.01)

CITY OF BRYAN
PULASKI TOWNSHIP
WILLIAMS COUNTY

MICROFILMED
JAN 18 1999

MICROFILMED
JAN 15 1999

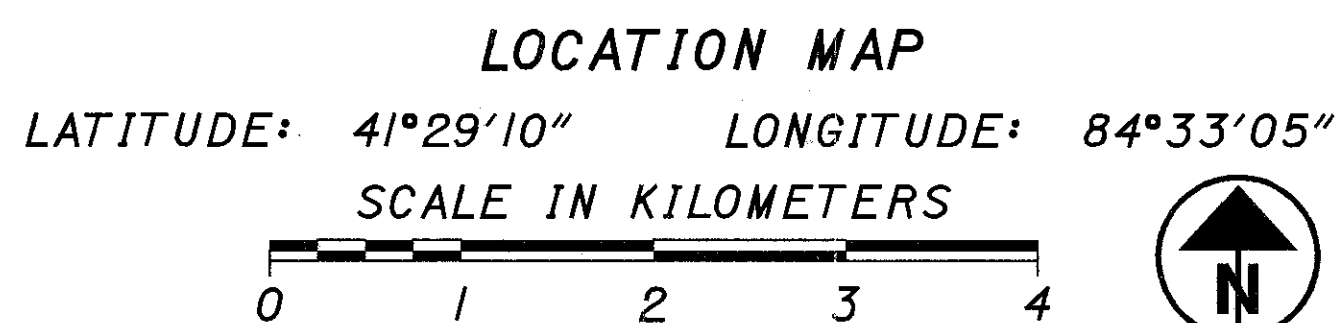


End Project
STA. 6+932.89
US 127

Begin Project
STA. 6+320.00
US 127 & SR 15

INDEX OF SHEETS:

Title Sheet	1
Schematic	2
Typical Sections	3-6
General Notes	7-9 (10-12 OMITTED)
Maintenance of Traffic	13-22
General Summary	23-25
Calculations	26,27
Superelevation Table	28
Subsummaries	29,30
Storm Water Pollution Prevention Plan	31,32
Plan and Profile	33-45
Cross Sections	46-59
Drive Profiles	60-62
Intersection Details	63, 63A
Pavement Joint Detail	64
Traffic Control	65-80
Right of Way	81-90



PORTION TO BE IMPROVED -----
STATE & FEDERAL ROUTES -----
OTHER ROADS -----

DESIGN DESIGNATION	SR 15 NORTH	US 127 SOUTH	US 127 EAST	CR. E WEST
CURRENT ADT (1997)	8750	11530	4030	1390
DESIGN YEAR ADT (2017)	11380	14990	5240	1810
DESIGN HOURLY VOLUME (2016)	1024	1350	472	163
DIRECTIONAL DISTRIBUTION	57%	57%	57%	57%
TRUCKS (24 HOUR B&C)	9%	9%	9%	9%
DESIGN SPEED	90 km/h	90 km/h	90 km/h	90 km/h
LEGAL SPEED	55 mph	35/55 mph	55 mph	55 mph

DESIGN FUNCTIONAL CLASSIFICATION -
SR 15 NORTH - PRINCIPAL ARTERIAL
US 127 AND SR 15 SOUTH - PRINCIPAL ARTERIAL
US 127 EAST - MAJOR COLLECTOR
CR E WEST - LOCAL ROAD

DESIGN EXCEPTIONS

NONE

UNDERGROUND UTILITIES
TWO WORKING DAYS
BEFORE YOU DIG
CALL 1-800-362-2764 (TOLL FREE)
OHIO UTILITIES PROTECTION SERVICE
NON-MEMBERS
MUST BE CALLED DIRECTLY

ENGINEERS SEAL:



SIGNED: *Aaron D. Behrman*
DATE: 3-3-98

PLAN PREPARED BY:

OHIO DEPARTMENT OF TRANSPORTATION

DISTRICT No. 2

STANDARD CONSTRUCTION DRAWINGS

STANDARD CONSTRUCTION DRAWINGS								SUPPLEMENTAL SPECIFICATIONS	
BP-1.1M	10-28-94	MT-95.31M	4-25-94	TC-21.20M	12-10-96	TC-71.10M	9-1-93	806	9-9-97
BP-2.1M	4-8-97	MT-95.32M	4-25-94	TC-41.20M	7-01-94	TC-81.10M	12-10-96		
BP-2.2M	10-21-97	MT-95.41M	4-25-94	TC-41.40M	3-31-94	TC-82.10M	11-24-93		
BP-2.5M	4-8-97	MT-97.10M	4-25-94	TC-42.20M	3-31-94	TC-83.10M	11-24-93		
BP-3.1M	10-28-94	MT-97.11M	1-30-95	TC-52.10M	7-29-94	TC-83.20M	11-24-93		
BP-4.1M	10-28-94	MT-102.10M	1-30-95	TC-52.20M	7-29-94	TC-84.20M	11-24-93		
BP-5.1M	10-28-94	MT-102.20M	1-30-95	TC-65.10M	11-1-95	TC-85.20M	11-24-93		
		MT-105.10M	4-25-94	TC-65.11M	11-1-95				
CB-1.1M	7-12-95			TC-65.12M	11-1-95				
CB-1.2M	7-12-95	RM-1.1M	4-8-97						
DM-1.2M	10-21-97								
DM-1.1M	10-21-97								
DM-4.2M	6-30-95								
DM-4.3M	6-30-95								
HW-2.2M	7-12-95								
MH-1.2M	9-6-95								

APPROVED: *Janez M. Carthy*
DATE 3-3-98 DISTRICT DEPUTY DIRECTOR

APPROVED: *Jim King*
DATE 3-31-98 DIRECTOR, DEPARTMENT OF TRANSPORTATION

FEDERAL PROJECT NO.

STP

PID NO.

14511

CONSTRUCTION PROJECT NO.

RAILROAD INVOLVEMENT

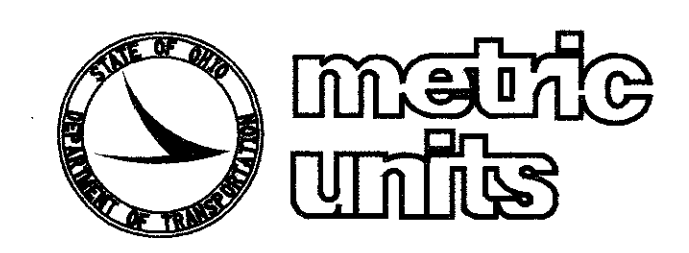
NONE

WIL-127-6.453 (4.01)

1/90

WIL-127-6.453
980452
90PGS
06-24-98
DIST. 02

pd \ williams \ 14511 \ 14511gt.dgn

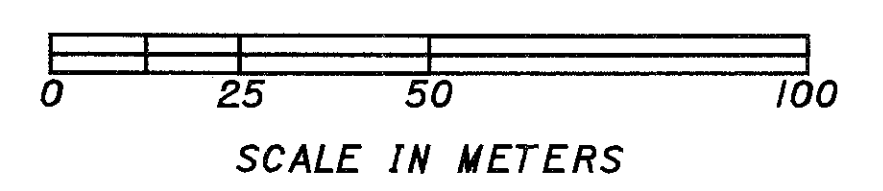


CENTERLINE PLAT
WIL-127-6.453 (4.01)
 WILLIAMS COUNTY, OHIO
 PULASKI TOWNSHIP
 SEC. 8 & 17 T-6-N R-3-E

THE PROPOSED RIGHT OF WAY SHALL BE REFERENCED FROM THE CENTERLINE OF SURVEY.

CENTERLINE MONUMENTS AND CENTERLINE REFERENCE MONUMENTS ARE SHOWN ON STANDARD CONSTRUCTION DRAWING MC-1 (REV. 6-13-69) OF THE OHIO DEPARTMENT OF TRANSPORTATION. THE PLACING OF THE MONUMENTS SHALL BE UNDER THE DIRECTION OF A REGISTERED SURVEYOR AND ARE TO BE SET, AS SHOWN BY THE HIGHWAY CONTRACTOR AT THE TIME OF CONSTRUCTION. ANY ALTERATIONS, WITH PRIOR APPROVAL OF THE OHIO DEPARTMENT OF TRANSPORTATION, SHALL BE NOTED AND O.D.O.T. SHALL BE NOTIFIED OF THE NEW LOCATIONS.

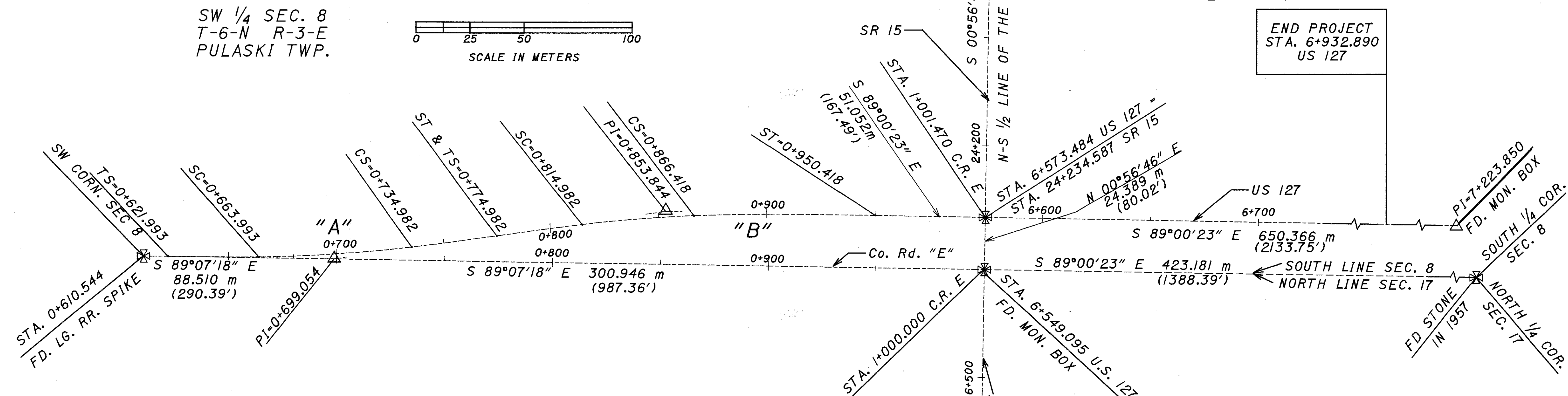
SW 1/4 SEC. 8
 T-6-N R-3-E
 PULASKI TWP.



SW 1/4 SEC. 8
 T-6-N R-3-E
 PULASKI TWP.

ALL STATION OFFSETS FALLING WITHIN THE SPIRAL PORTION OF THE CURVE SHALL BE REFERENCED FROM THE CENTERLINE OF SURVEY AND THE SECTION LINE.

END PROJECT
 STA. 6+932.890
 US 127



CURVE "A"

P.I. STA. 0+699.054
 $\Delta = -09^{\circ} 09' 59''$ LT
 $\Delta_c = -05^{\circ} 48' 38''$ LT
 $R = 700.000$ m (2296.59')
 $L1 = 42.000$ m (137.80')
 $\theta_{s1} = 01^{\circ} 43' 08''$
 $LT1 = 28.001$ m (91.87')
 $ST1 = 14.001$ m (45.94')
 $Xc1 = 41.996$ m (137.78')
 $Yc1 = 0.420$ m (1.38')
 T.S. STA. 0+621.993
 S.C. STA. 0+663.993

$Lc = 70.990$ m (232.91')
 $Tc = 35.525$ m (116.55')
 $Ec = 0.907$ m (2.98')
 $L2 = 40.000$ m (131.23')
 $\theta_{s2} = 01^{\circ} 38' 13''$
 $LT2 = 26.668$ m (87.49')
 $ST2 = 13.334$ m (43.75')
 $Xc2 = 39.997$ m (131.22')
 $Yc2 = 0.381$ m (1.25')
 C.S. STA. 0+734.982
 S.T. STA. 0+774.982

CURVE "B"

P.I. STA. 0+853.844
 $\Delta = -09^{\circ} 17' 05''$ RT
 $\Delta_c = -04^{\circ} 12' 36''$ RT
 $R = 700.000$ m (2296.59')
 $L1 = 40.000$ m (131.23')
 $\theta_{s1} = 01^{\circ} 38' 13''$
 $LT1 = 26.668$ m (87.49')
 $ST1 = 13.334$ m (43.75')
 $Xc1 = 39.997$ m (131.22')
 $Yc1 = 0.381$ m (1.25')
 T.S. STA. 0+774.982
 S.C. STA. 0+814.982

$Lc = 51.435$ m (168.75')
 $Tc = 25.729$ m (84.41')
 $Ec = 0.473$ m (1.55')
 $L2 = 84.000$ m (275.59')
 $\theta_{s2} = 03^{\circ} 26' 16''$
 $LT2 = 56.011$ m (183.76')
 $ST2 = 28.010$ m (91.90')
 $Xc2 = 83.970$ m (275.49')
 $Yc2 = 1.680$ m (5.51')
 C.S. STA. 0+866.418
 S.T. STA. 0+950.418

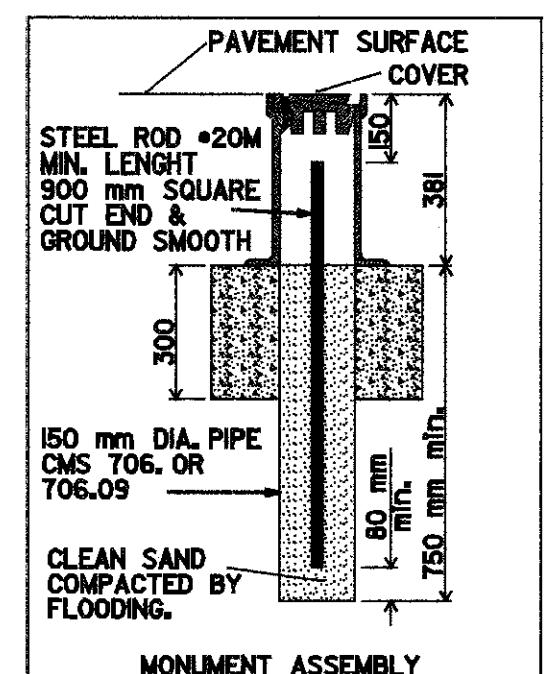
BEARING COINCIDE WITH O.D.O.T. R/W PLAN WIL-127-3.91 1959

SOURCE OF 60' R/W C.R. E PER WILLIAMS COUNTY ENGINEER VOL. B PAGE 40

NOTE: IN CASE OF DISCREPANCY BETWEEN METRIC AND ENGLISH EQUIVALENTS, THE METRIC VALUES SHALL TAKE PRECEDENCE.

MONUMENTS TO BE SET DURING CONSTRUCTION

STATION	DIST. FROM C OF SURVEY		C MONUMENT ASSEMBLY, AS PER PLAN	RIGHT OF WAY MONUMENT, AS PER PLAN
	LEFT	RIGHT		
0+621.993	ON C	ON C	/	
0+663.993	ON C	ON C	/	
0+699.054		0.907	/	
0+734.982	ON C	ON C	/	
0+774.982	ON C	ON C	/	
0+814.982	ON C	ON C	/	
0+853.844	0.473	ON C	/	
0+866.418	ON C	ON C	/	
0+950.418	ON C	ON C	/	
			9	



NW 1/4 SEC. 17
 T-6-N R-3-E
 PULASKI TWP.

BEGIN PROJECT
 STA. 6+320.000
 US 127

NW 1/4 SEC. 17
 T-6-N R-3-E
 PULASKI TWP.

RECEIVED _____, 19____
 RECORDED _____, 19____
 BOOK _____ PAGE _____
 COUNTY RECORDER

I HEREBY CERTIFY THAT THIS PLAT IS A TRUE DELINEATION OF A SURVEY MADE BY THE OHIO DEPARTMENT OF TRANSPORTATION IN 1995
 BY Steven Wayne Hoffman SURVEYOR No. 6821
 STEVEN WAYNE HOFFMAN DATE 3-3-98

WIL/SSP

CENTERLINE PLAT
 WIL-127-6.453 (4.01)
 STATE JOB NO. 625031
 P.L.D. 1/45/11
 SCALE IN METERS
 HORIZONTAL
 0 20 40
 1/10
 81/90



HORIZONTAL SCALE IN METERS

PID NO. 14511

STATE JOB NO. 625031

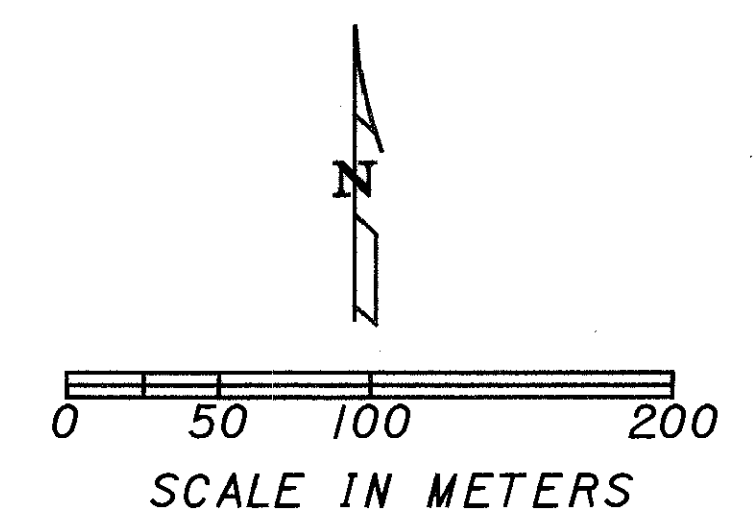
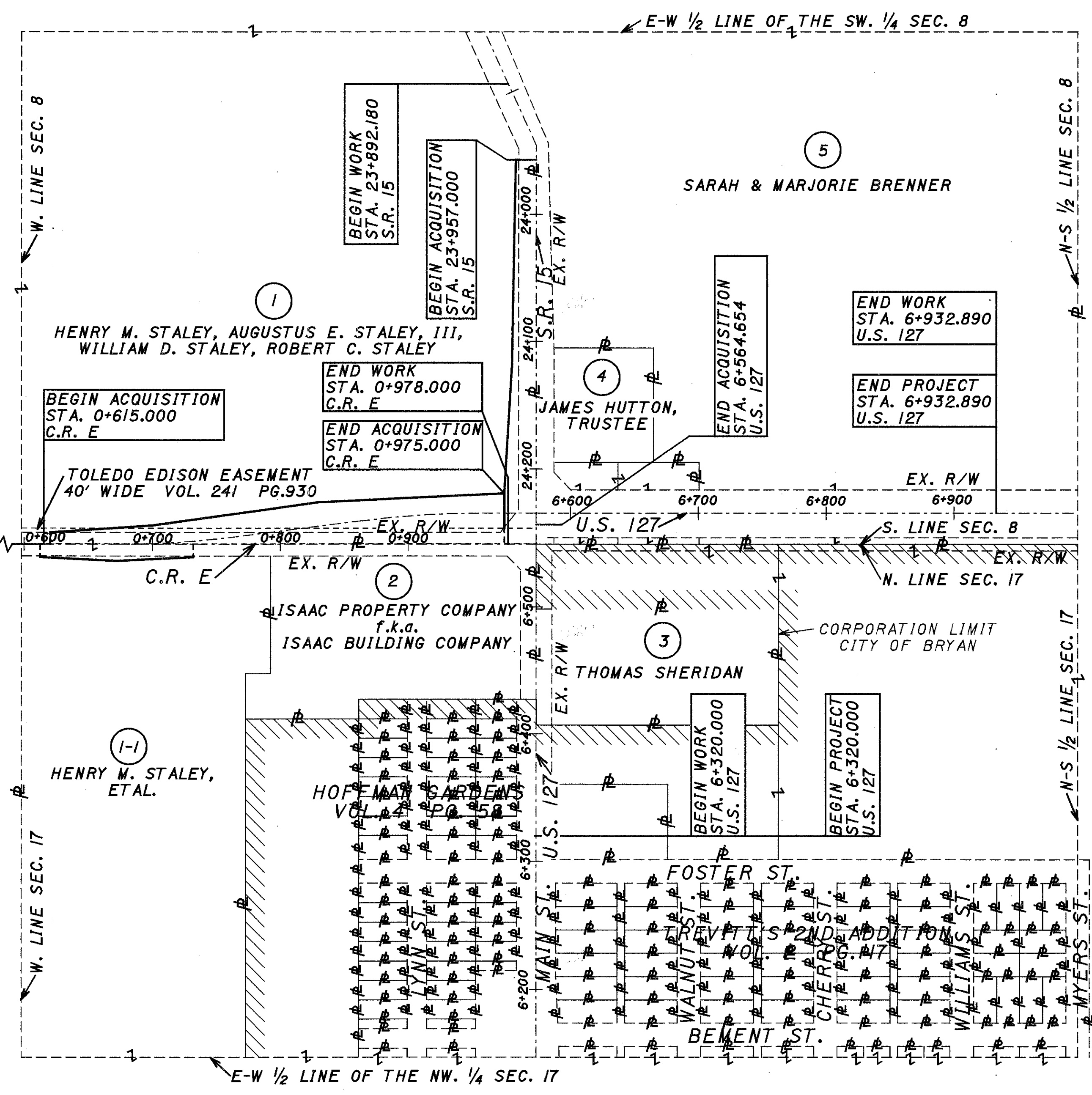
PROPERTY MAP

WIL-127-6.453 (4.01)

2/10

82
90

WIL-127-6.453 (4.01)
PULASKI TOWNSHIP
WILLIAMS COUNTY
SEC. 8 & 17 T-6-N R-3-E



UTILITY OWNERS

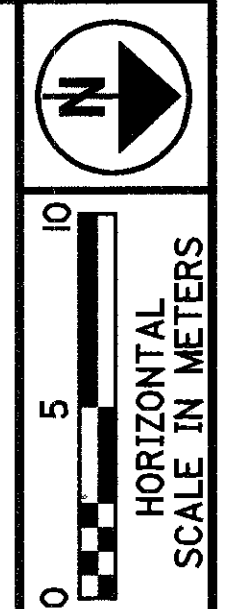
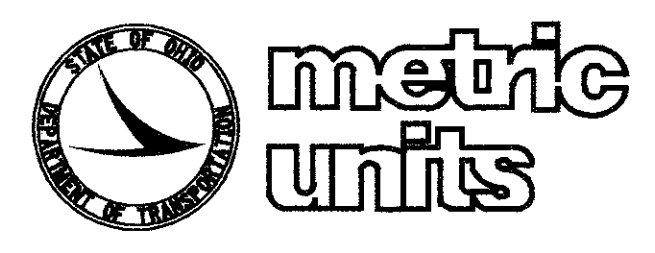
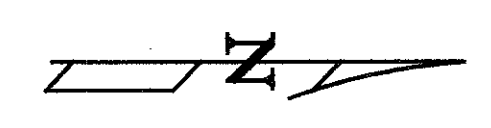
TYPE	NAME & ADDRESS
TELEPHONE	GTE NORTH 117 NORTH SANDUSKY ST. P.O. BOX 299 BELLEVUE, OHIO 44811 (419) 483-8158
ELECTRIC	TOLEDO EDISON 382 EDISON PLAZA 300 MADISON AVE. TOLEDO, OHIO 43652 (419) 249-5218
TELEPHONE	AT & T 312 S. MAIN ST WEST UNITY, OHIO 43570 1-800-214-3862
GAS	OHIO GAS COMPANY 200 WEST HIGH ST. BRYAN, OHIO 43506 1-800-331-7396
WATER & ELECTRIC	CITY OF BRYAN MUNICIPAL UTILITIES 841 EAST EDGERTON ST. BRYAN, OHIO 43506 (419) 636-4232
CABLEVISION	TCI CABLEVISION 324 PAIGE ST. P.O. BOX 351 BRYAN, OHIO 43506 (419) 636-8833

NOTE: THE LOCATION OF THE UNDERGROUND UTILITIES SHOWN ON THE PLANS ARE AS OBTAINED FROM THE OWNERS OF THE UTILITY AS REQUIRED BY SECTION 153.64 OF THE OHIO REVISED CODE.

REV.	DATE	DESCRIPTION

WIL127PM

WILLIAMS COUNTY
PULASKI TOWNSHIP
SW 1/4 SECTION 8
T-6-N R-3-E

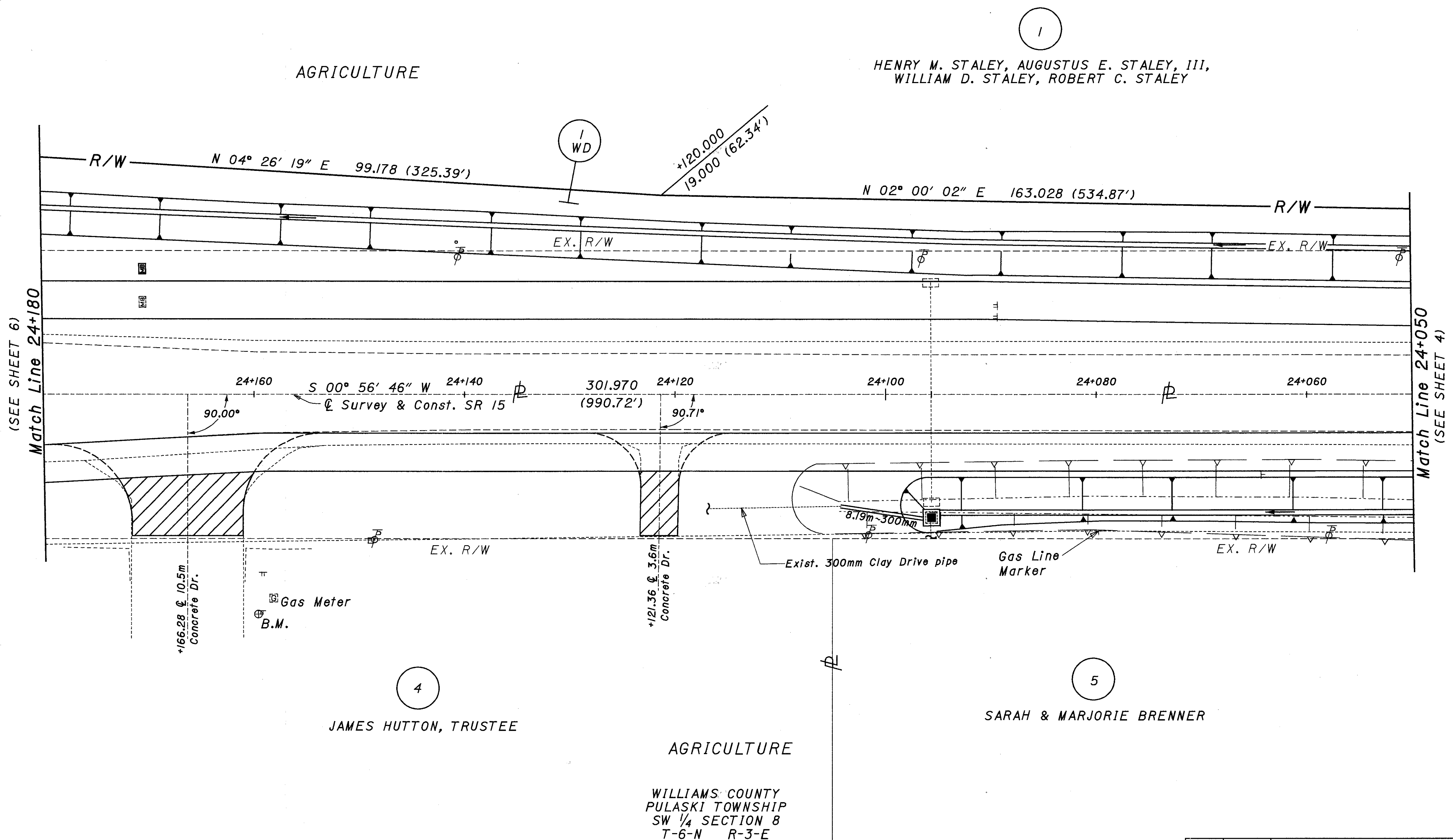


P.I.D. 14511
STATE JOB NO. 625031

RIGHT OF WAY PLAN
STA. 24+050.000 TO STA. 24+180.000 S.R. 15

WIL-127-6.453-(4.01)

5/10
85
90

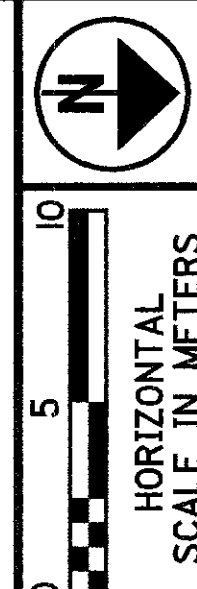


WILLI5DD5

REV.	DATE	DESCRIPTION
2	11-12-97	ADJUSTED BEARINGS
1	7-16-97	REVISED PAR. IWD
		DATE OF COMPLETION

WILLIAMS COUNTY
PULASKI TOWNSHIP
NW 1/4 SECTION 17
T-6-N R-3-E

WILLIAMS COUNTY
PULASKI TOWNSHIP
SW 1/4 SECTION 8
T-6-N R-3-E



P.L.D. 1/45/11
STATE JOB NO. 62503/

RIGHT OF WAY PLAN
STA. 6+510 U.S. 127 TO STA. 24+180 S.R. 15

WIL-127-6.453-(4.01)

6/10
86
90

HENRY M. STALEY, AUGUSTUS E. STALEY, III,
WILLIAM D. STALEY, ROBERT C. STALEY

AGRICULTURE

ISAAC PROPERTY COMPANY F.K.A.
ISAAC BUILDING COMPANY

BUSINESS

JAMES HUTTON, TRUSTEE

BUSINESS

BUSINESS

WILLIAMS COUNTY
PULASKI TOWNSHIP
SW 1/4 SECTION 8
T-6-N R-3-E

WILLIAMS COUNTY
PULASKI TOWNSHIP
NW 1/4 SECTION 17
T-6-N R-3-E

BEGIN PROJECT
STA. 6+320.000
U.S. 127

BEGIN WORK
STA. 6+320.000
U.S. 127

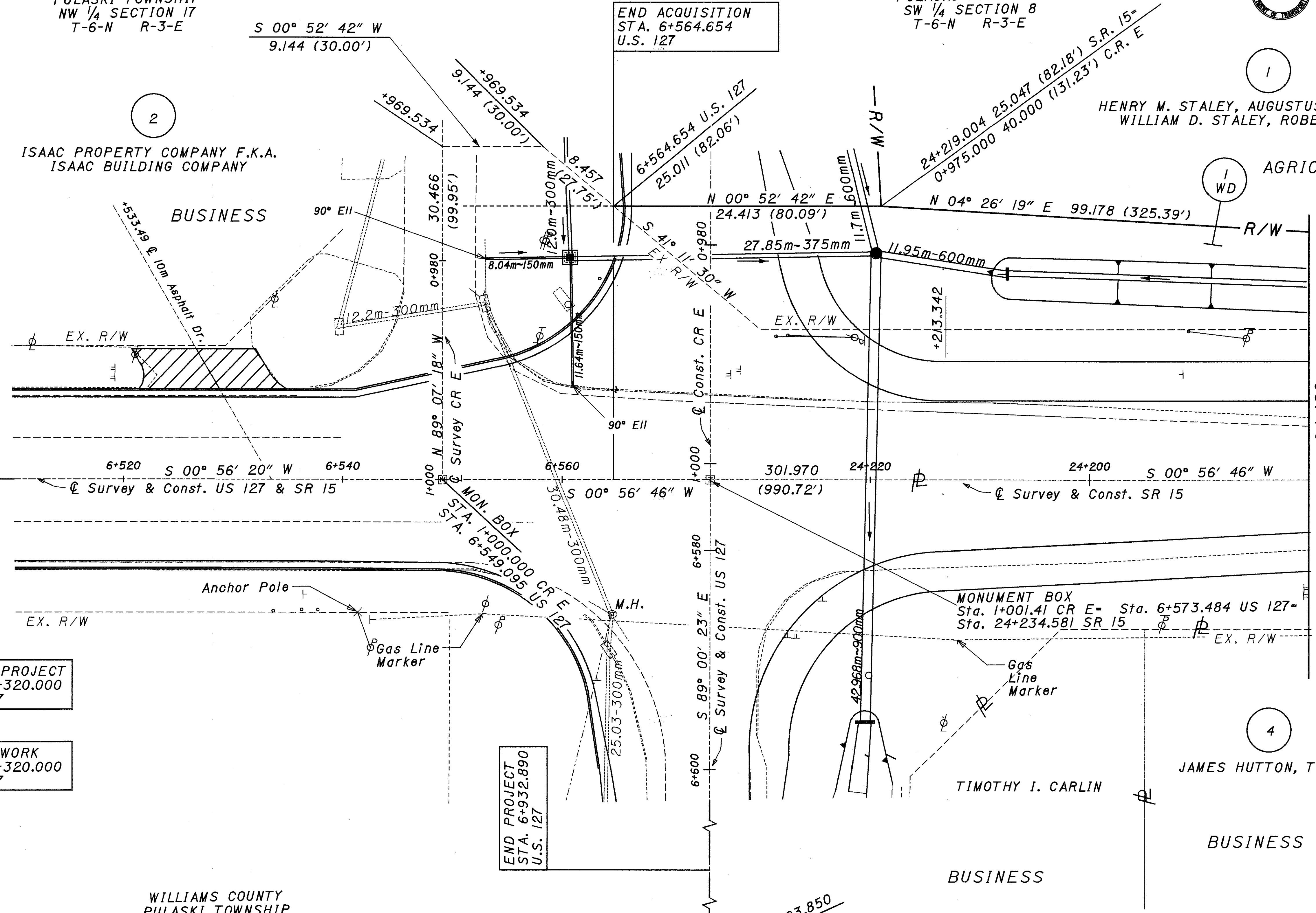
END PROJECT
STA. 6+932.890
U.S. 127

END ACQUISITION
STA. 6+564.654
U.S. 127

STA. 6+283.182
FD. MON. BOX

STA. 7+223.850
FD. MON. BOX

Match Line 24+180
(SEE SHEET 5)

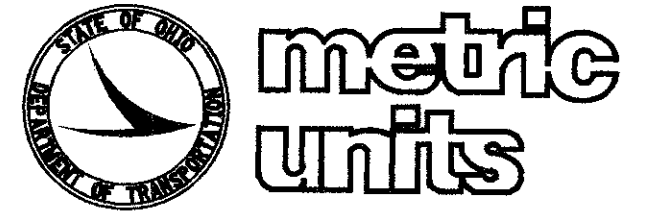


REV.	DATE	DESCRIPTION
2	11-12-97	ADJUSTED BEARINGS
1	7-16-97	REVISED PAR. IWD
		DATE OF COMPLETION

WIL15DD5

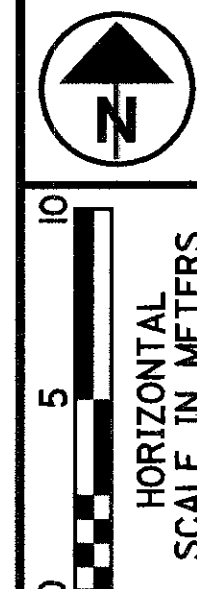
WILLIAMS COUNTY
PULASKI TOWNSHIP
SE 1/4 SECTION 7
T-6-N R-3-E

WILLIAMS COUNTY
PULASKI TOWNSHIP
SW 1/4 SECTION 8
T-6-N R-3-E



AGRICULTURE

AGRICULTURE

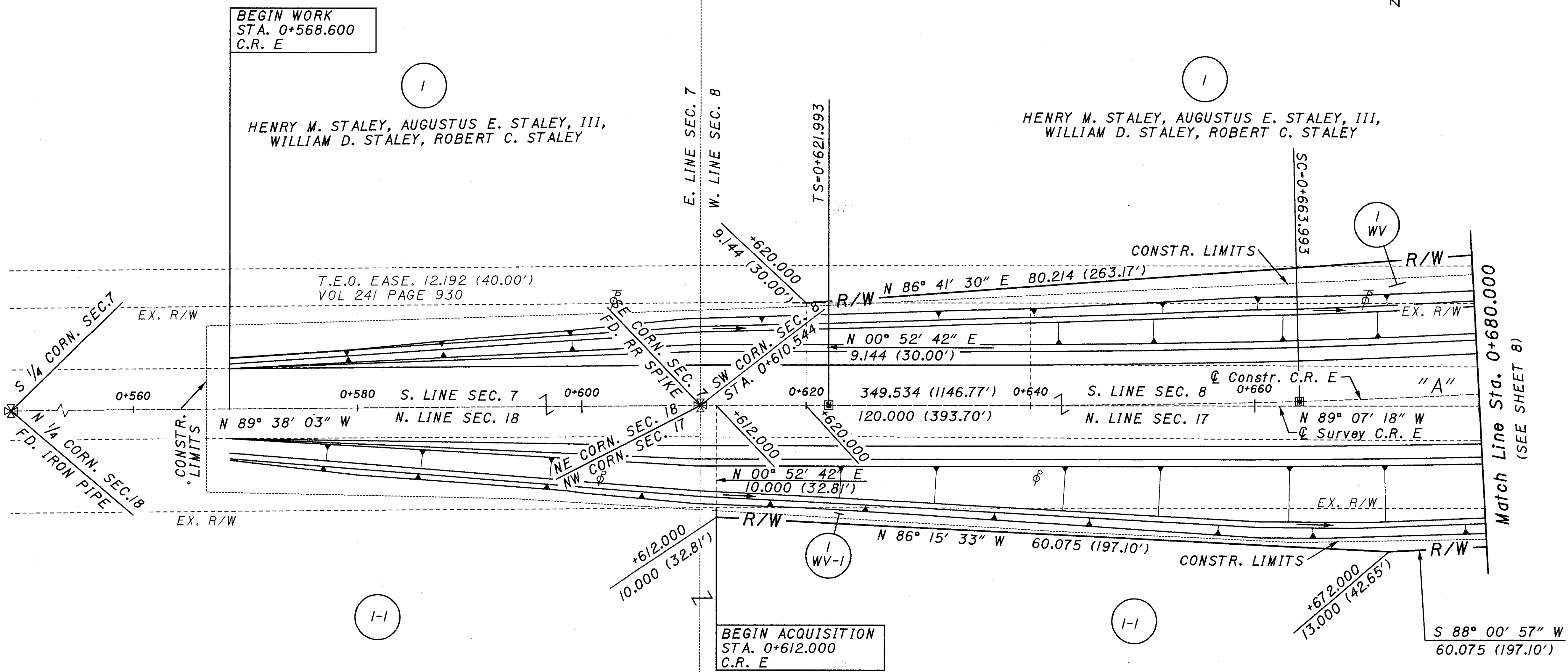


P.I.D. 1/45/11
STATE JOB NO. 625031

RIGHT OF WAY PLAN
STA. 0+612.000 TO STA. 0+680.000

WIL-127-6.453-(4.01)

7/10
87
90



HENRY M. STALEY, AUGUSTUS E. STALEY, III,
WILLIAM D. STALEY, ROBERT C. STALEY

HENRY M. STALEY, AUGUSTUS E. STALEY, III,
WILLIAM D. STALEY, ROBERT C. STALEY

WILLIAMS COUNTY
PULASKI TOWNSHIP
NE 1/4 SECTION 18
T-6-N R-3-E

WILLIAMS COUNTY
PULASKI TOWNSHIP
NW 1/4 SECTION 17
T-6-N R-3-E

CURVE "A"

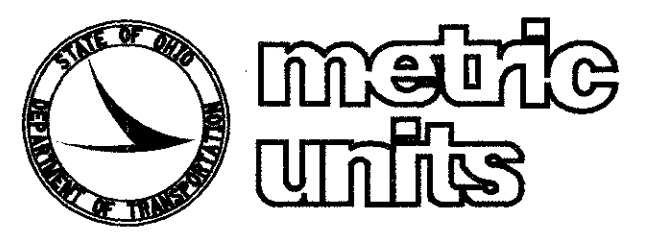
P.I. STA. 0+699.054	Lc = 70.990 m (232.91')
Δ = 09° 09' 59" LT	Tc = 35.525 m (116.55')
Δc = 05° 48' 38" LT	Ec = 0.907 m (2.98')
R = 700.000 m (2296.59')	L2 = 40.000 m (131.23')
LI = 42.000 m (137.80')	θs2 = 01° 38' 13"
θs1 = 01° 43' 08"	LT2 = 26.668 m (87.49')
LT1 = 28.001 m (91.87')	ST2 = 13.334 m (43.75')
ST1 = 14.001 m (45.94')	Xo2 = 39.997 m (131.22')
Xc1 = 41.996 m (137.78')	Yc2 = 0.381 m (1.25')
Yc1 = 0.420 m (1.38')	C.S. STA. 0+734.982
T.S. STA. 0+621.993	S.T. STA. 0+774.982
S.C. STA. 0+663.993	

NOTE: SOURCE OF 60' RIGHT OF WAY PER WILLIAMS COUNTY ENGINEER'S OFFICE, RECORDED IN VOL. B PAGE 40

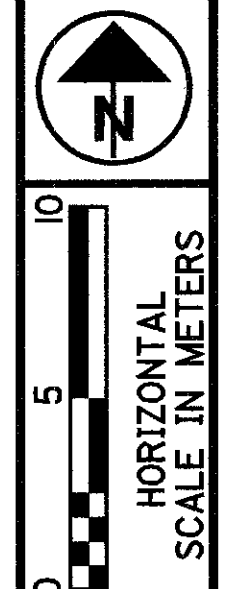
REV. DATE	DESCRIPTION

WILCOE

WILLIAMS COUNTY
PULASKI TOWNSHIP
SW 1/4 SECTION 8
T-6-N R-3-E



AGRICULTURE



P.L.D. 14511
STATE JOB NO. 625031

RIGHT OF WAY PLAN
STA. 0+680.000 TO STA. 0+810.000

WIL-127-6.453-(4.01)

8/10

88
90

CURVE "A"

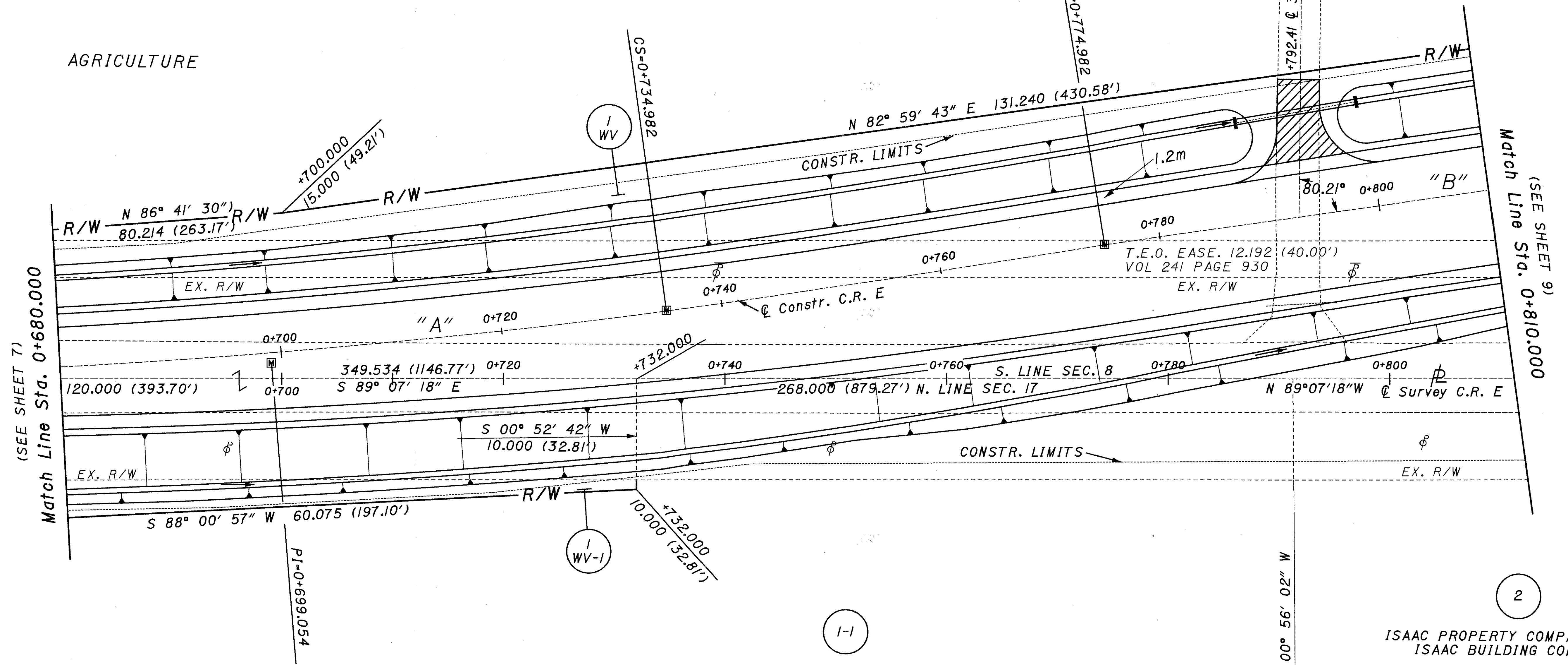
P.I. STA. 0+699.054
 $\Delta_c = 09^\circ 09' 59''$ LT
 $\Delta_c = 05^\circ 48' 38''$ LT
 $R = 700.000$ m (2296.59')
 $L1 = 42.000$ m (137.80')
 $\theta_{s1} = 01^\circ 43' 08''$
 $LT1 = 28.001$ m (91.87')
 $ST1 = 14.001$ m (45.94')
 $Xc1 = 41.996$ m (137.78')
 $Yc1 = 0.420$ m (1.38')
 T.S. STA. 0+621.993
 S.C. STA. 0+663.993

CURVE "B"

P.I. STA. 0+853.844
 $\Delta_c = 09^\circ 17' 05''$ RT
 $\Delta_c = 04^\circ 12' 36''$ RT
 $R = 700.000$ m (2296.59')
 $L1 = 40.000$ m (131.23')
 $\theta_{s1} = 01^\circ 38' 13''$
 $LT1 = 26.668$ m (87.49')
 $ST1 = 13.334$ m (43.75')
 $Xc1 = 39.997$ m (131.22')
 $Yc1 = 0.381$ m (1.25')
 T.S. STA. 0+774.982
 S.C. STA. 0+814.982

$Lc = 51.435$ m (168.75')
 $Tc = 25.729$ m (84.41')
 $Ec = 0.473$ m (1.55')
 $L2 = 84.000$ m (275.59')
 $\theta_{s2} = 03^\circ 26' 16''$
 $LT2 = 56.011$ m (183.76')
 $ST2 = 28.010$ m (91.90')
 $Xc2 = 83.970$ m (275.49')
 $Yc2 = 1.680$ m (5.51')
 C.S. STA. 0+866.418
 S.T. STA. 0+950.418

HENRY M. STALEY, AUGUSTUS E. STALEY, III,
WILLIAM D. STALEY, ROBERT C. STALEY



HENRY M. STALEY, AUGUSTUS E. STALEY, III,
WILLIAM D. STALEY, ROBERT C. STALEY

ISAAC PROPERTY COMPANY F.K.A.
ISAAC BUILDING COMPANY

AGRICULTURE

AGRICULTURE

WILLIAMS COUNTY
PULASKI TOWNSHIP
NW 1/4 SECTION 17
T-6-N R-3-E

REV. DATE	DESCRIPTION

WILCOE

AGRICULTURE

WILLIAMS COUNTY
PULASKI TOWNSHIP
SW 1/4 SECTION 8
T-6-N R-3-E

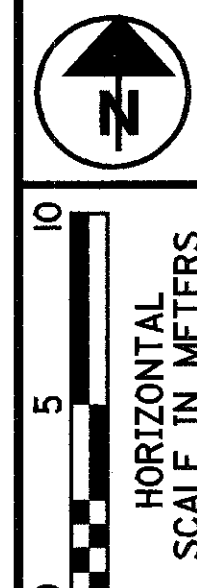
HENRY M. STALEY, AUGUSTUS E. STALEY, III,
WILLIAM D. STALEY, ROBERT C. STALEY

MICROFILM
JAN 18 98

ST-0+950.418
1 WV

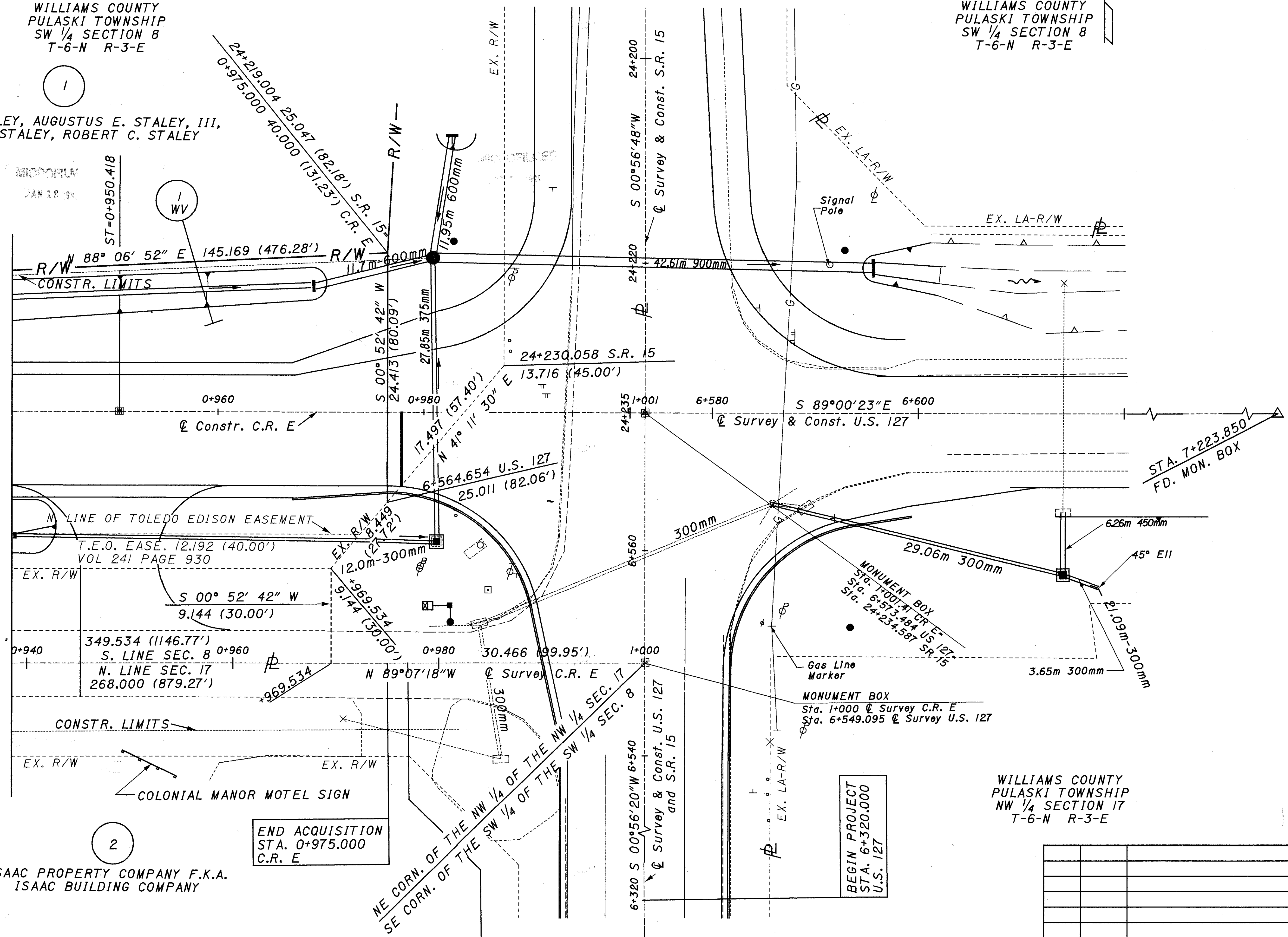


WILLIAMS COUNTY
PULASKI TOWNSHIP
SW 1/4 SECTION 8
T-6-N R-3-E



P.I.D. 14511
STATE JOB NO. 625031

(SEE SHEET 9)
Match Line Sta. 0+940.000



BUSINESS

ISAAC PROPERTY COMPANY F.K.A.
ISAAC BUILDING COMPANY

2

WILLIAMS COUNTY
PULASKI TOWNSHIP
NW 1/4 SECTION 17
T-6-N R-3-E

END ACQUISITION
STA. 0+975.000
C.R. E

END WORK
STA. 0+978.000
C.R. E

BEGIN PROJECT
STA. 6+320.000
U.S. 127

WILLIAMS COUNTY
PULASKI TOWNSHIP
NW 1/4 SECTION 17
T-6-N R-3-E

RIGHT OF WAY PLAN
STA. 0+940.000 TO STA. 0+975.000

WIL-127-6.453-(4.01)

REV.	DATE	DESCRIPTION
2	7-17-97	MOVED PROPERTY LINE SYMBOL
1	7-16-97	CHANGED BEARING
		DATE OF COMPLETION

10/10
90
90

WILCOE