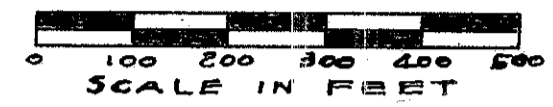


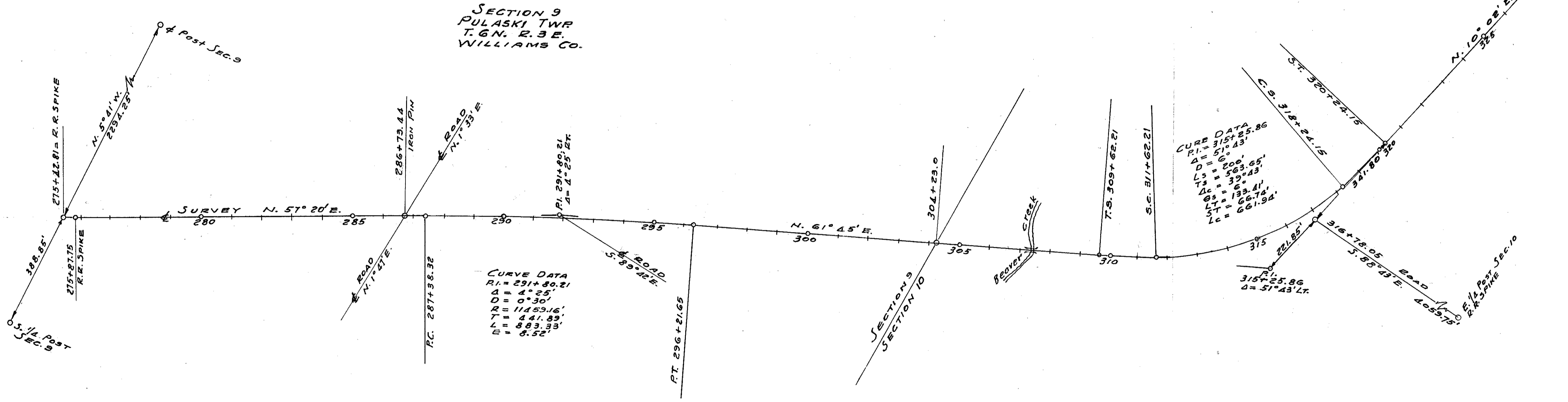
LOCATION PLAN
 WIL-127-5.36
 WILLIAMS COUNTY
 DEPARTMENT OF HIGHWAYS STATE OF OHIO
 1954



I hereby certify this to be a true and correct platting of the center line of survey as determined by the Ohio Department of Highways.

Date June 18, 1954

George W. Rubin
 DIVISION DEPUTY DIRECTOR



CENTER LINE REFERENCE MONUMENTS WILL BE SET BEFORE OR AFTER CONSTRUCTION

STA. 280	STA. 285	STA. 290	STA. 295	STA. 300	STA. 305	T.S. 309+62.2	S.T. 320+24.15	STA. 325	STA. 330

Scanned July 1977

R1127 # 2 A-43

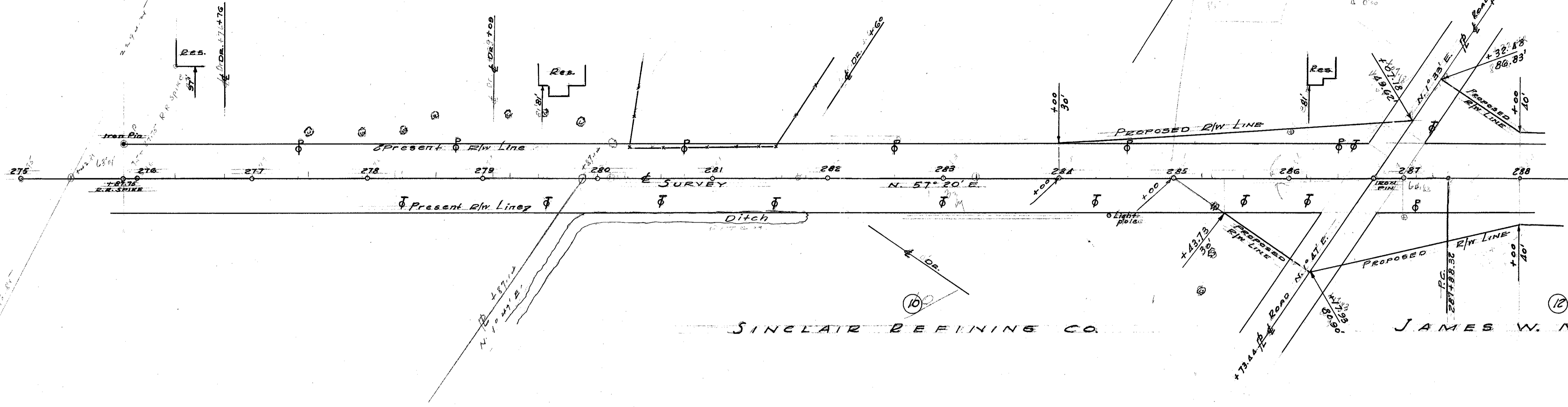
SEC. 9 PULASKI TWP. T. 6 N. R. 3 E.

WILLIAMS COUNTY
 WIL 127-536
 R/W PLANS
 DATE: 5-5-54 DRAWN BY J.S.
 REVISED:
 LENGTH OF PROJECT

1
2

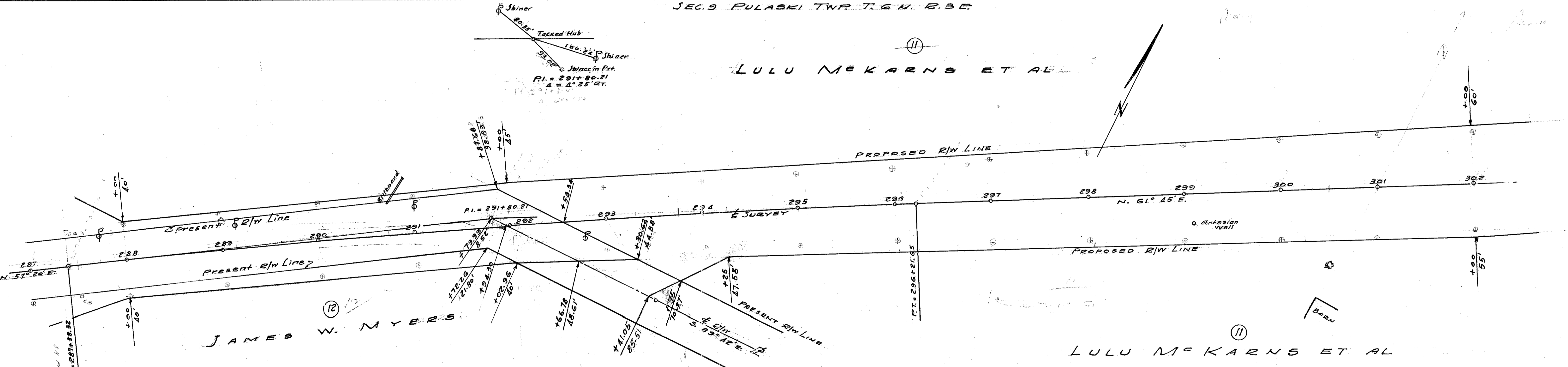
GEORGE V. & DELORES MELLOTT

LULU McKARNs ET AL



SEC. 3 PULASKI TWP. T. 6 N. R. 3 E.
SEC. 9 PULASKI TWP. T. 6 N. R. 3 E.

LULU McKARNs ET AL



CURVE DATA
 P.I. = 291+80.21
 Δ = 4° 25' 27"
 D = 0° 30'
 Q = 11459.16'
 T = 441.89'
 L = 883.33'
 E = 8.52'

SEC. 9 PULASKI TWP. T. 6 N. R. 3 E.

SCANNED
JULY 1977

3/14/54

