

#7025

FED. RD. DIVISION	STATE	PROJECT	
2	OHIO	STATE	

WILLIAMS COUNTY  
WIL. 127-13.77

# STATE OF OHIO DEPARTMENT OF HIGHWAYS WIL. 127-13.77 VILLAGE of WEST UNITY

## Williams County Brady Township

**CONVENTIONAL SIGNS**

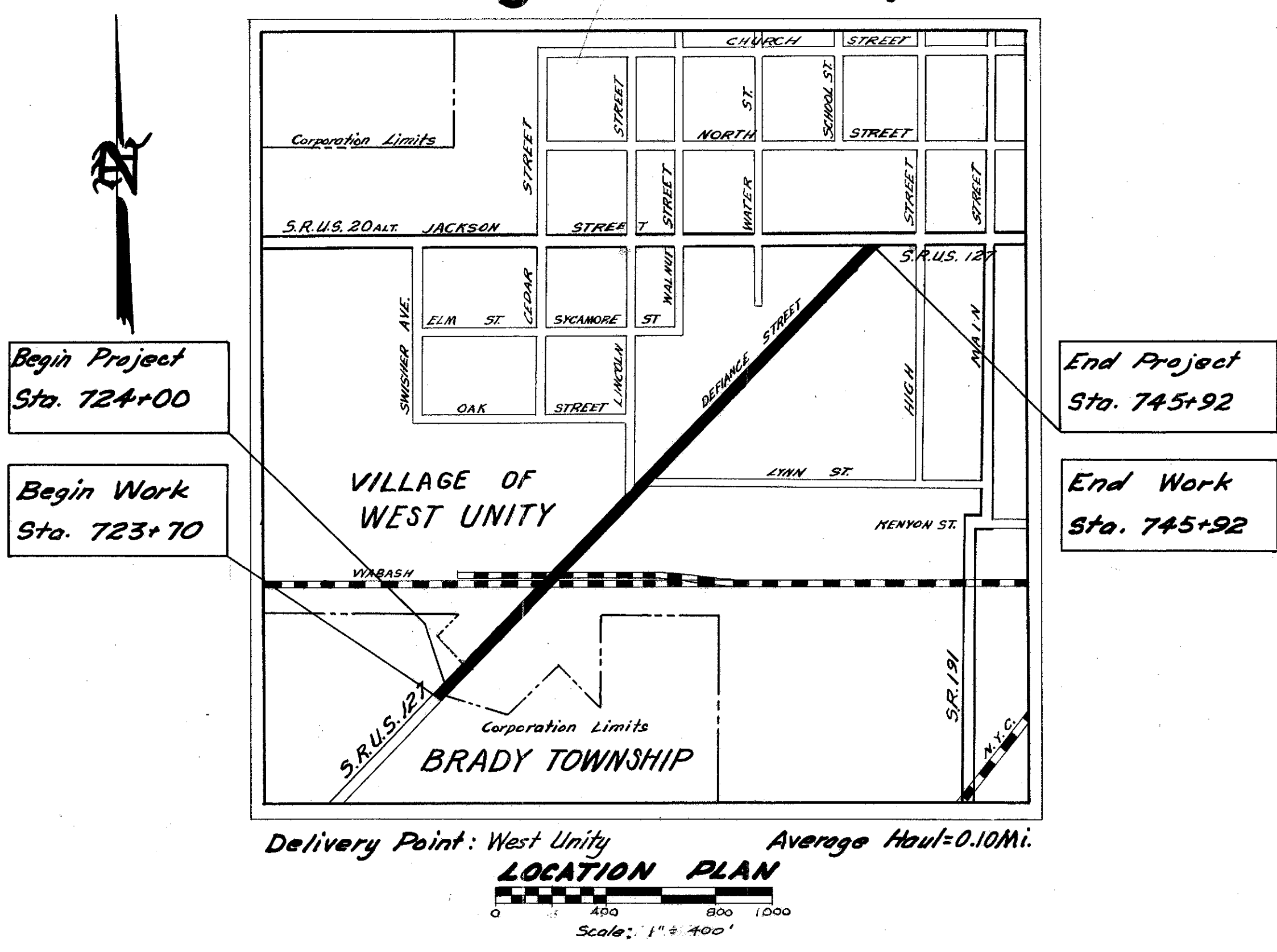
Township Line	-----
City or Village Line	-----
Center Line	-----
Property Line	-----
Fence Line	-----
Pole Line	⊙ ⊙ ⊙ ⊙ ⊙ ⊙ ⊙ ⊙
Railroad	=====
Trees or Stumps (existing)	⊗ ⊗ ⊗ ⊗ ⊗ ⊗ ⊗ ⊗
Trees or Stumps (to be removed)	⊗ ⊗ ⊗ ⊗ ⊗ ⊗ ⊗ ⊗
Existing Right of Way	-----
Proposed Right of Way	-----

**INDEX OF SHEETS**

Title Sheet	1
Typical Sections	2
Notes	3
Summary of Quantities	4
General Summary	4
Plan & Profile	5-6
Cross Sections	7-11

**LINE DATA**

Begin Project	Sta. 724+00
End Project	Sta. 745+92
Gross Length of Project	= 2,192 Lin. Ft.
Deduct for Railroad	Sta. 728+57.83 to Sta. 729+89.57 = 31.74 Lin. Ft.
Net length of Project	= 2,160.26 Lin. Ft. = .409 Mi.
Begin Work	Sta. 723+70
End Work	Sta. 745+92
Gross Length of Work	= 2,222.0 Lin. Ft.
Deduct for Railroad	= 31.74 Lin. Ft.
Net length of Work	= 2,190.26 Lin. Ft. = .414 Mi.



Delivery Point: West Unity Average Haul=0.10Mi.  
**LOCATION PLAN**  
 Scale: 1" = 400'

Portion To Be Improved  
 State Highways  
 Other Roads

STANDARD CONSTRUCTION DRAWINGS		SUPPLEMENTAL SPECIFICATIONS	
G-7.07	6-1-56	E-101	1-1-57
DR-1	1-3-55	B-119	8-11-57
I-1,2,3,4,5	4-24-58	9	6-24-58
I-8 C.B. No. 6	5-1-52		
I-8 C.B. No. 6	5-1-52		
I-8 M.H. No. 1	5-1-52		
T-35	1-2-56		
L-1	4-1-50		
L-3	4-1-50		
L-3A	4-1-50		
I-8 M.H. No. 1A	1-3-55		

The standard specifications of the State of Ohio, Department of Highways, including changes and supplemental specifications listed in the proposal shall govern this improvement.

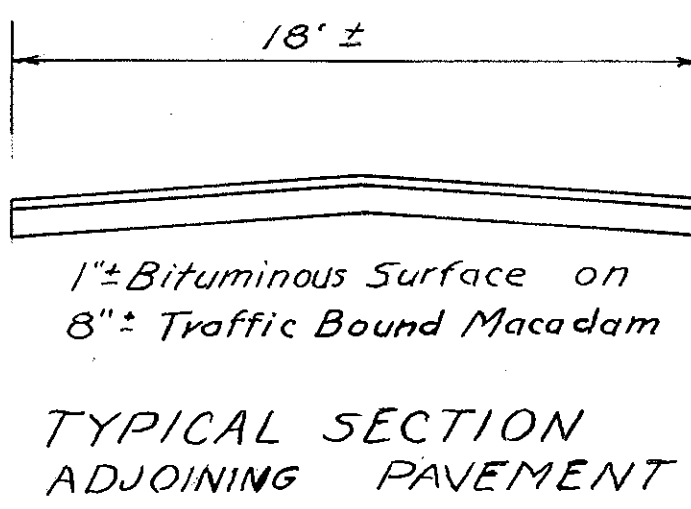
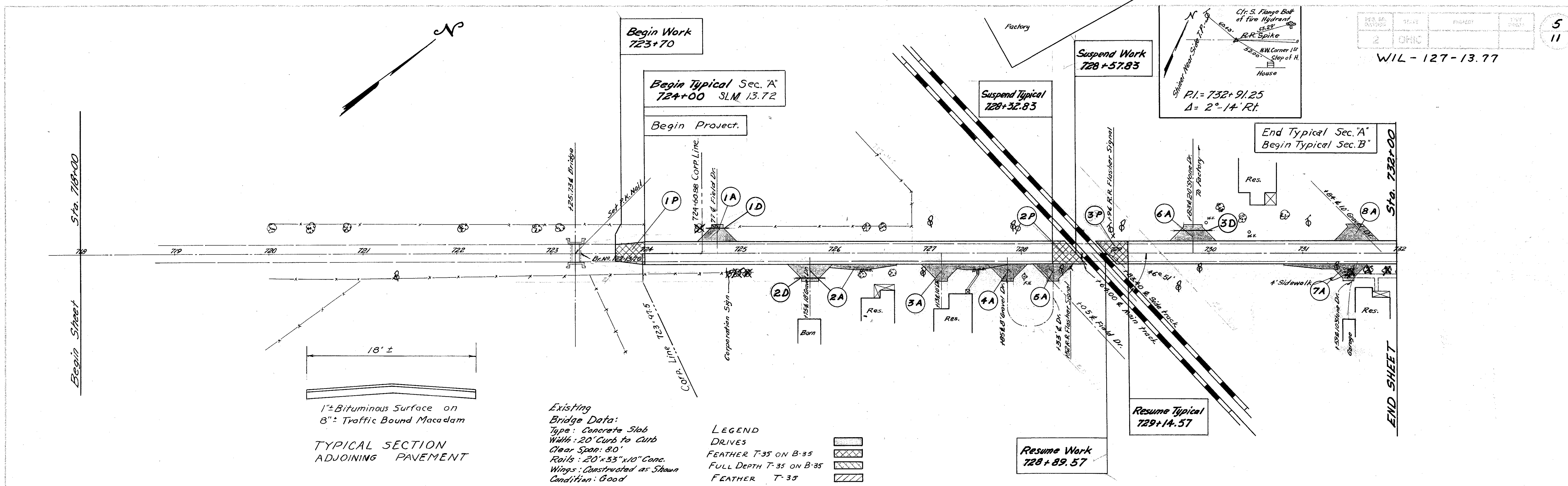
The right of way for this improvement will be Provided by the State of Ohio.

I hereby approve these plans and declare that the making of this improvement will not require the closing to traffic of the highway and that provisions for the maintenance and safety of traffic will be as set forth on these plans and estimates.

- Approved LC Roush  
 Date June 25, 58 Division Deputy Director
- Approved L.H. Makenzie  
 Date 7-30-58 Deputy Director of Planning & Programming
- Approved \_\_\_\_\_  
 Date \_\_\_\_\_ Engineer of Bridges
- Approved P.E. Shultz  
 Date 7-26-56 Engineer of Location & Design
- Approved P.E. Marketer  
 Date 7-26-56 Deputy Director of Design & Construction
- Approved Kenzo J. Sherman  
 Date 7/30/58 First Assistant Director
- Approved Charles M. Noll  
 Date 7/30/58 Director of Highways

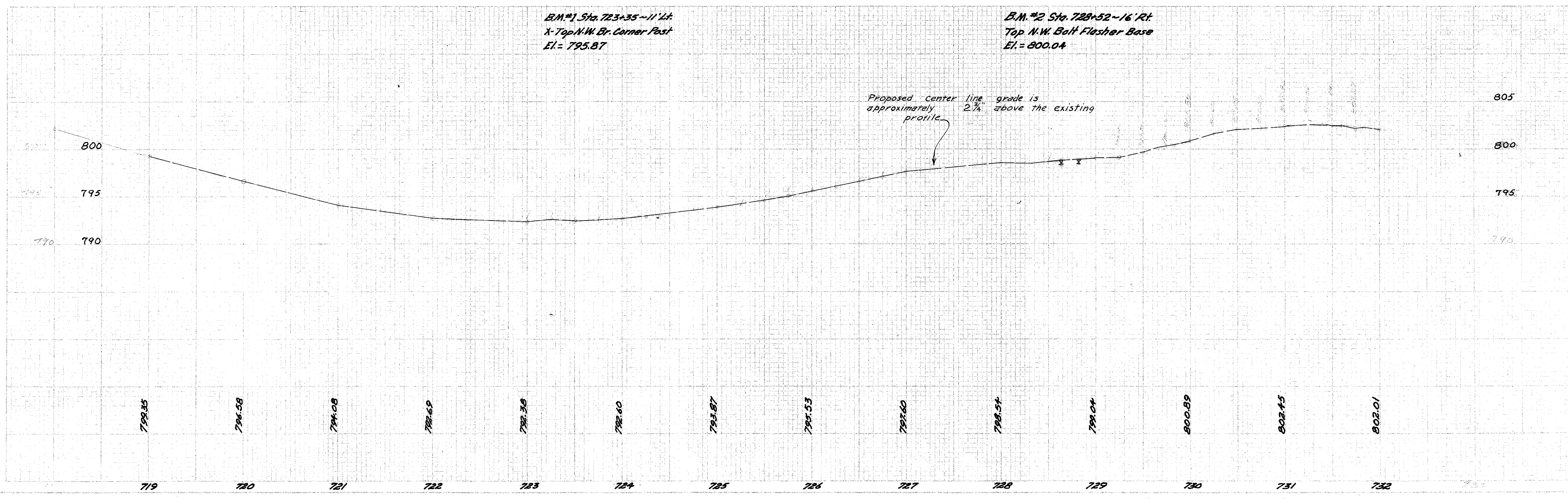
APR 25 1961  
 GROUND PHOTOLAB

FILE NO.	WILLIAMS COUNTY WIL. 127-13.77
Date of Letting	
Contract No.	



Existing  
Bridge Data:  
Type: Concrete Slab  
Width: 20' Curb to Curb  
Clear Span: 80'  
Rails: 20"x33"x10" Conc.  
Wings: Constructed as Shown  
Condition: Good

LEGEND  
DRIVES  
FEATHER T-35 ON B-35  
FULL DEPTH T-35 ON B-35  
FEATHER T-35



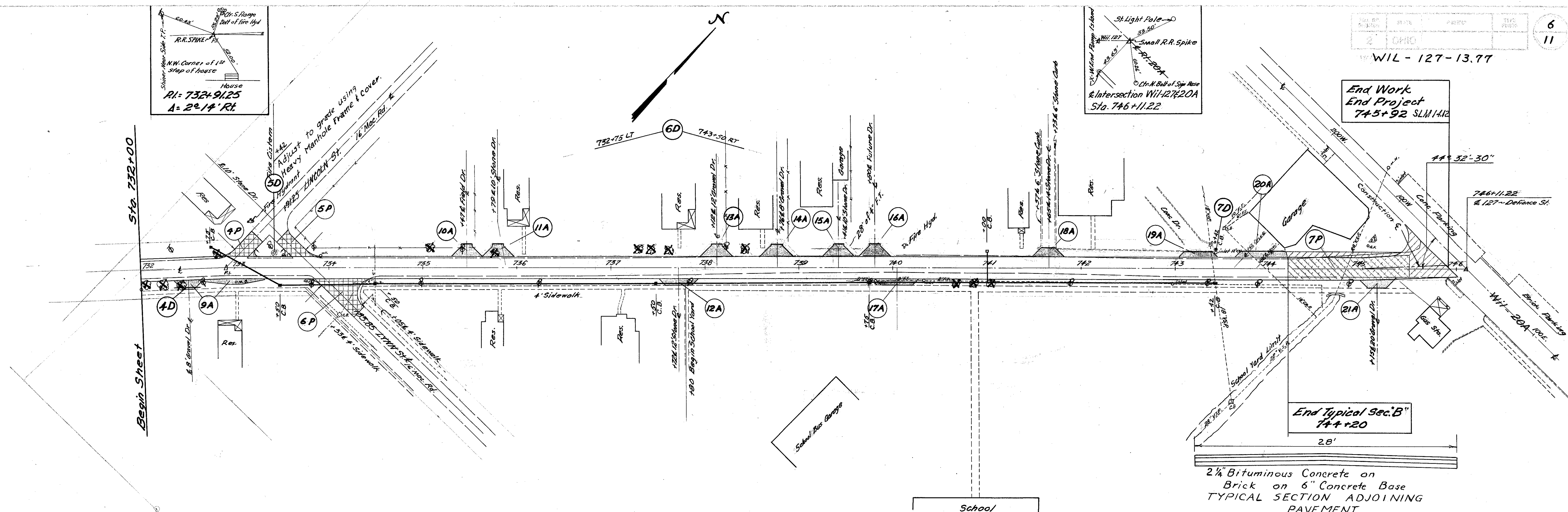
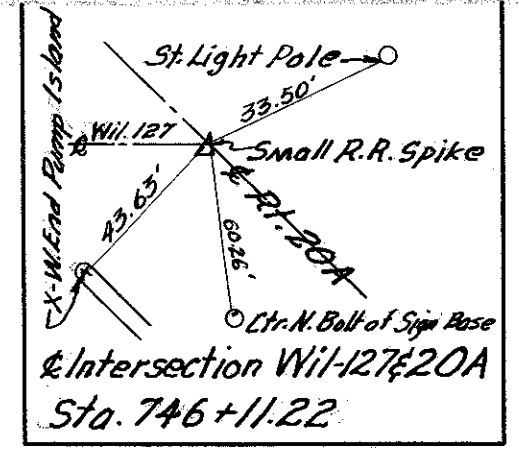
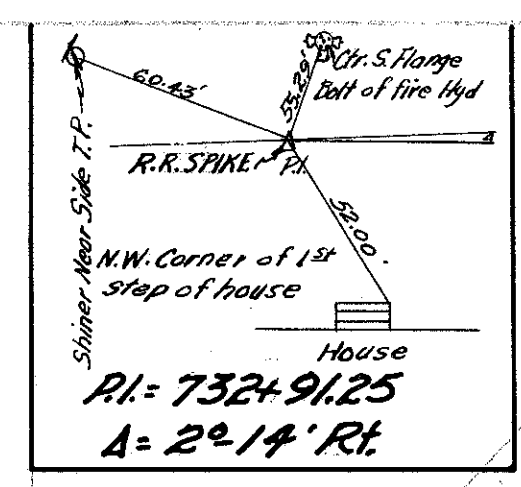


WIL - 127-13.77

End Work  
End Project  
745+92 SLM 1412

End Typical Sec. B"  
744+20

2 1/4" Bituminous Concrete on  
Brick on 6" Concrete Base  
TYPICAL SECTION ADJOINING  
PAVEMENT

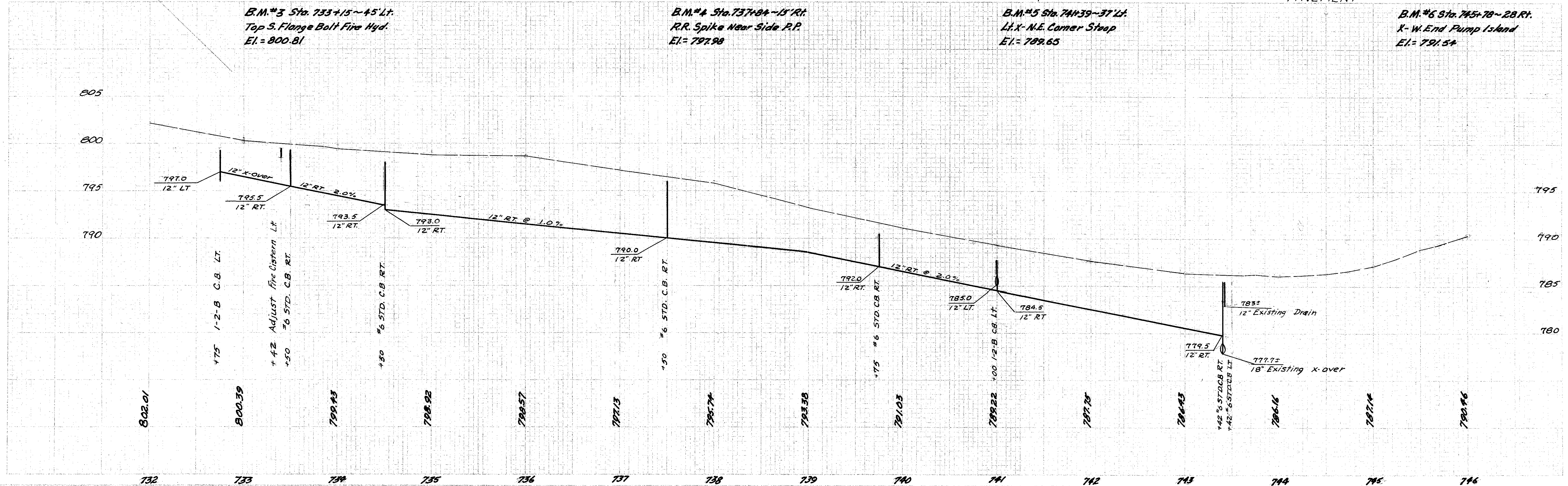


B.M.#3 Sta. 733+15~45 Lt.  
Top S. Flange Bolt Fire Hyd.  
El. = 800.81

B.M.#4 Sta. 737+84~15' Rt.  
R.R. Spike Near Side P.P.  
El. = 797.98

B.M.#5 Sta. 744+39~37 Lt.  
Lt. X - N.E. Corner Steep  
El. = 789.65

B.M.#6 Sta. 745+78~28 Rt.  
X - W. End Pump Island  
El. = 791.54



Sta. 732+00 to Sta. 746+11.22