

O.D.O.T. DISTRICT 2 SURVEY OFFICE (USE ONLY)

PERSONNEL

REFERENCE NO. 8 E

SHEET 14 OF 19

NOTES BARNHISEL

DATE 6/24/92

ROUTE US 127

H.C. VAN DUSEN

WEATHER CLOUDY

COUNTY WILLIAMS

R.C. BURNETT

TEMP. 60°

TOWNSHIP PULASKI

KUSZ

SECTION 17

DWG BY NIESE PID _____

T 6 N R 3 E

TYPE MONUMENT BRASS MON. W/ PUNCH HOLE

~~ON SURFACE~~ - BELOW 1 1/2"

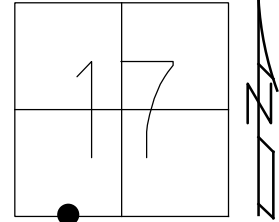
OFFSET \varnothing PAVEMENT ON LT : RT

- TO - EDGE PAVEMENT

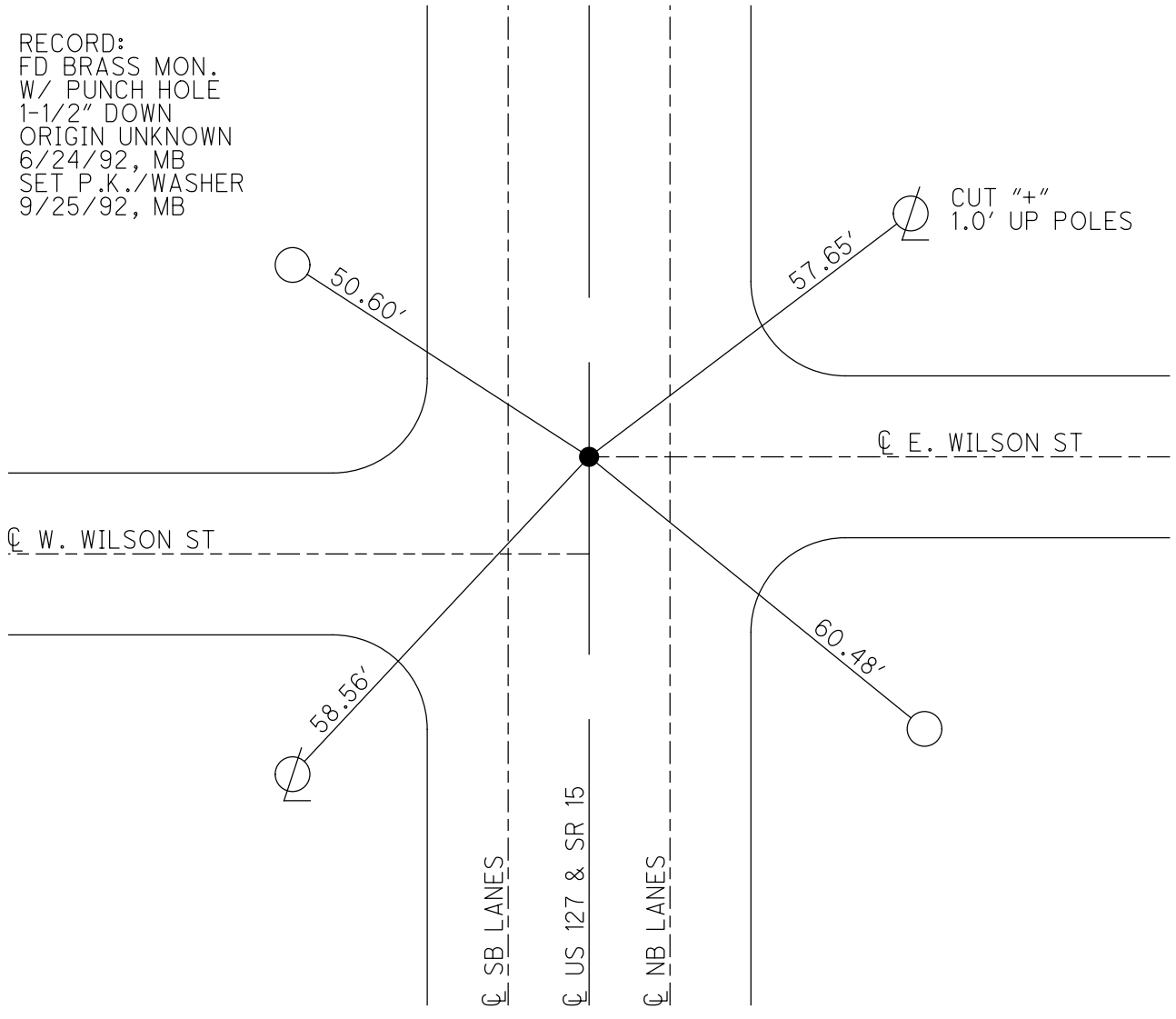
STATION: 160+95

HORZ. DATUM: _____ GEOID: _____

GRID: NORTHING: _____ EASTING: _____



RECORD:
FD BRASS MON.
W/ PUNCH HOLE
1-1/2" DOWN
ORIGIN UNKNOWN
6/24/92, MB
SET P.K./WASHER
9/25/92, MB



O.D.O.T. DISTRICT 2 SURVEY OFFICE

PERSONNEL

REFERENCE NO. 8E

SHEET 14 OF 23

NOTES BARNHISEL

H.C. VAN DUSEN

R.C. BURNETT

KUSZ

DATE 6-24-92

WEATHER CLOUDY

TEMP. +60°

ROUTE U.S. 127

COUNTY WILLIAMS

TOWNSHIP PULASKI

SECTION 17

T 6 N R 3 E

TYPE MONUMENT BRASS MON. w/PUNCH HOLE

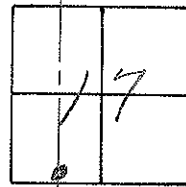
ON SURFACE - BELOW 1/2"

LEFT - & PAV'T. - RIGHT YES

- TO - EDGE PAVEMENT

S.L.M. 160+95 ON & OF E. WILSON

ORIGIN UNKNOWN



SET PK & WASHER
9-25-92
MB

