

O.D.O.T. DISTRICT 2 SURVEY OFFICE (USE ONLY)

PERSONNEL

REFERENCE NO. 9 A

SHEET 16 OF 19

NOTES BARNHEISEL

DATE 6/24/92

ROUTE US 127

H.C. VAN DUSEN

WEATHER CLOUDY

COUNTY WILLIAMS

R.C. KUSZ

TEMP. 60°

TOWNSHIP PULAKSI

BURNETT

SECTION 17

DWG BY NIESE PID \_\_\_\_\_

T 6 N R 3 E

TYPE MONUMENT 1/2" IPIN

~~ON SURFACE~~ - BELOW 2"

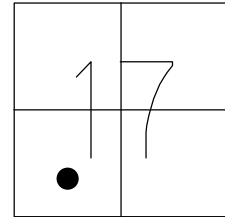
OFFSET ☉ PAVEMENT ON LT : RT

- TO - EDGE PAVEMENT

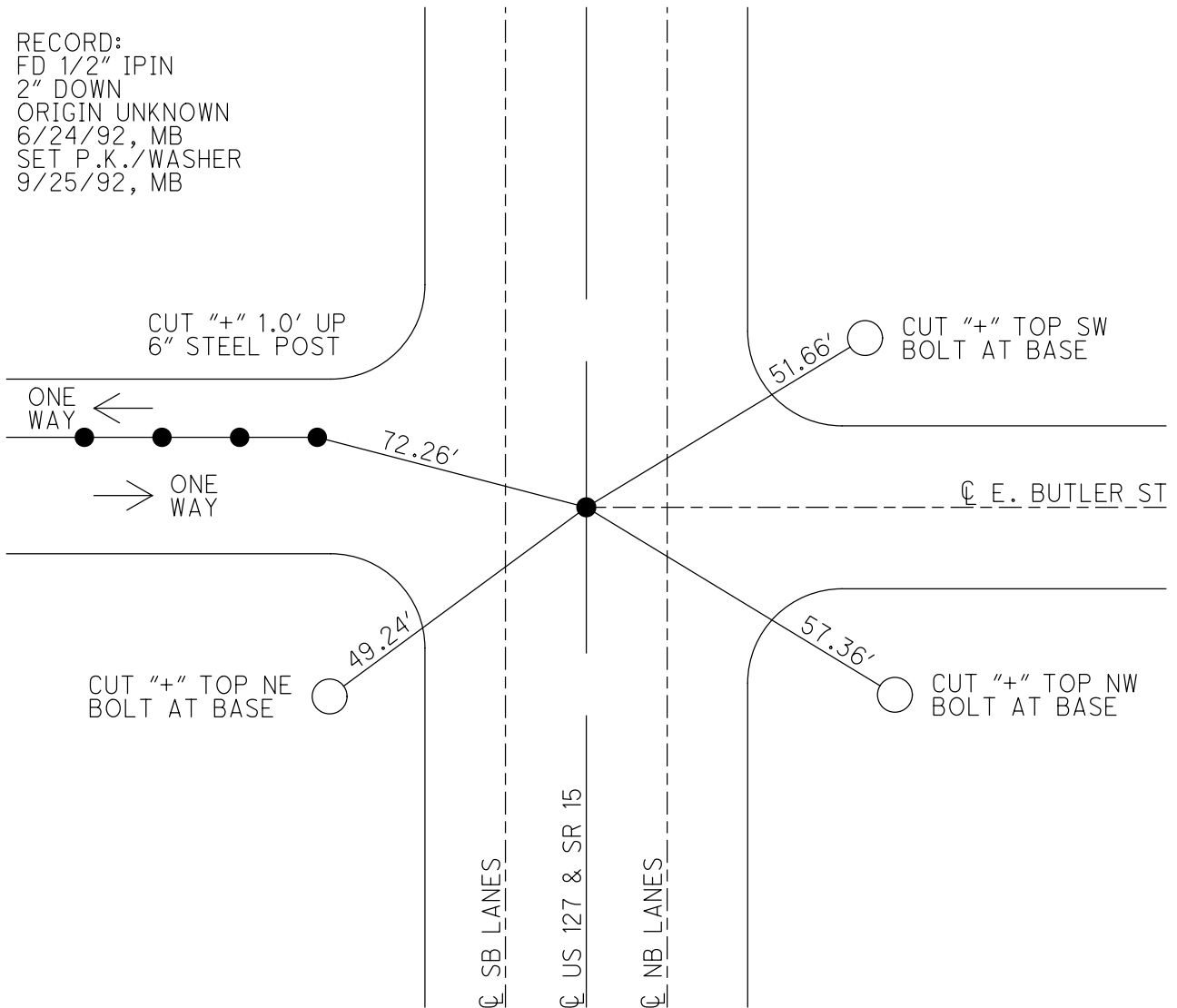
STATION: 169+57

HORIZ. DATUM: \_\_\_\_\_ GEOID: \_\_\_\_\_

GRID: NORTHING: \_\_\_\_\_ EASTING: \_\_\_\_\_



RECORD:  
FD 1/2" IPIN  
2" DOWN  
ORIGIN UNKNOWN  
6/24/92, MB  
SET P.K./WASHER  
9/25/92, MB



# O.D.O.T. DISTRICT 2 SURVEY OFFICE

PERSONNEL

REFERENCE NO. 9A

SHEET 16 OF 23

NOTES BARNHISEL

H.C. VAN DUSEN

DATE 6-24-92

ROUTE U.S. 127

R.C. KUSZ

WEATHER Cloudy

COUNTY Williams

BURNETT

TEMP. +60°

TOWNSHIP PULASKI

SECTION 17

T. 6 N. R. 3 E.

TYPE MONUMENT 1/2" ROD

ORIGINAL UNKNOWN

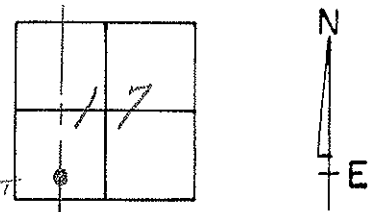
ON SURFACE - BELOW 2"

LEFT - & PAV'T. - RIGHT YES

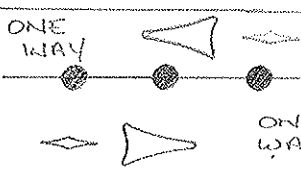
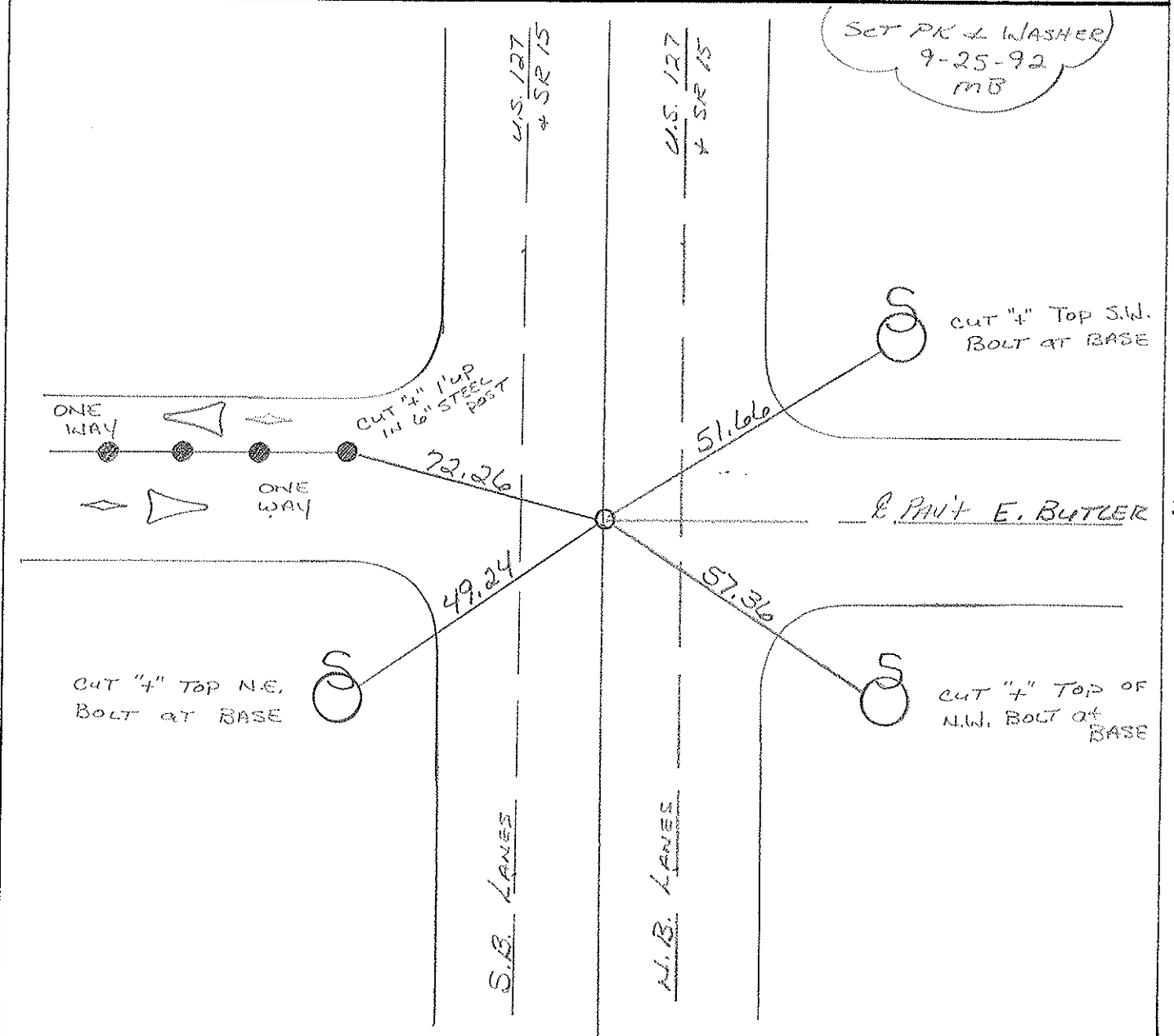
— TO — EDGE PAVEMENT

S.L.M. 169+57

ON E OF E. BUTLER ST



SET PK & WASHER  
9-25-92  
MB



CUT 4" 1/4" UP  
IN 6" STEEL POST

CUT 4" TOP S.W.  
BOLT AT BASE

CUT 4" TOP N.E.  
BOLT AT BASE

CUT 4" TOP OF  
N.W. BOLT AT BASE