

O.D.O.T. DISTRICT 2 SURVEY OFFICE (USE ONLY)

PERSONNEL

REFERENCE NO. 10

SHEET 17 OF 19

NOTES BARNHEISEL

DATE 6/24/92

ROUTE US 127

H.C. VAN DUSEN

WEATHER CLOUDY

COUNTY WILLIAMS

R.C. KUSZ

TEMP. 60°

TOWNSHIP PULASKI

SECTION 17

DWG BY NIESE PID _____

T 6 N R 3 E

TYPE MONUMENT 1/2" BRASS ROD

~~ON SURFACE~~ - BELOW 2"

OFFSET \odot PAVEMENT ON LT : RT

- TO - EDGE PAVEMENT

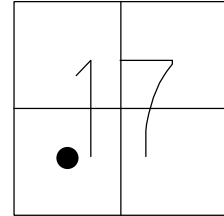
STATION: 174+39

HORZ. DATUM: _____

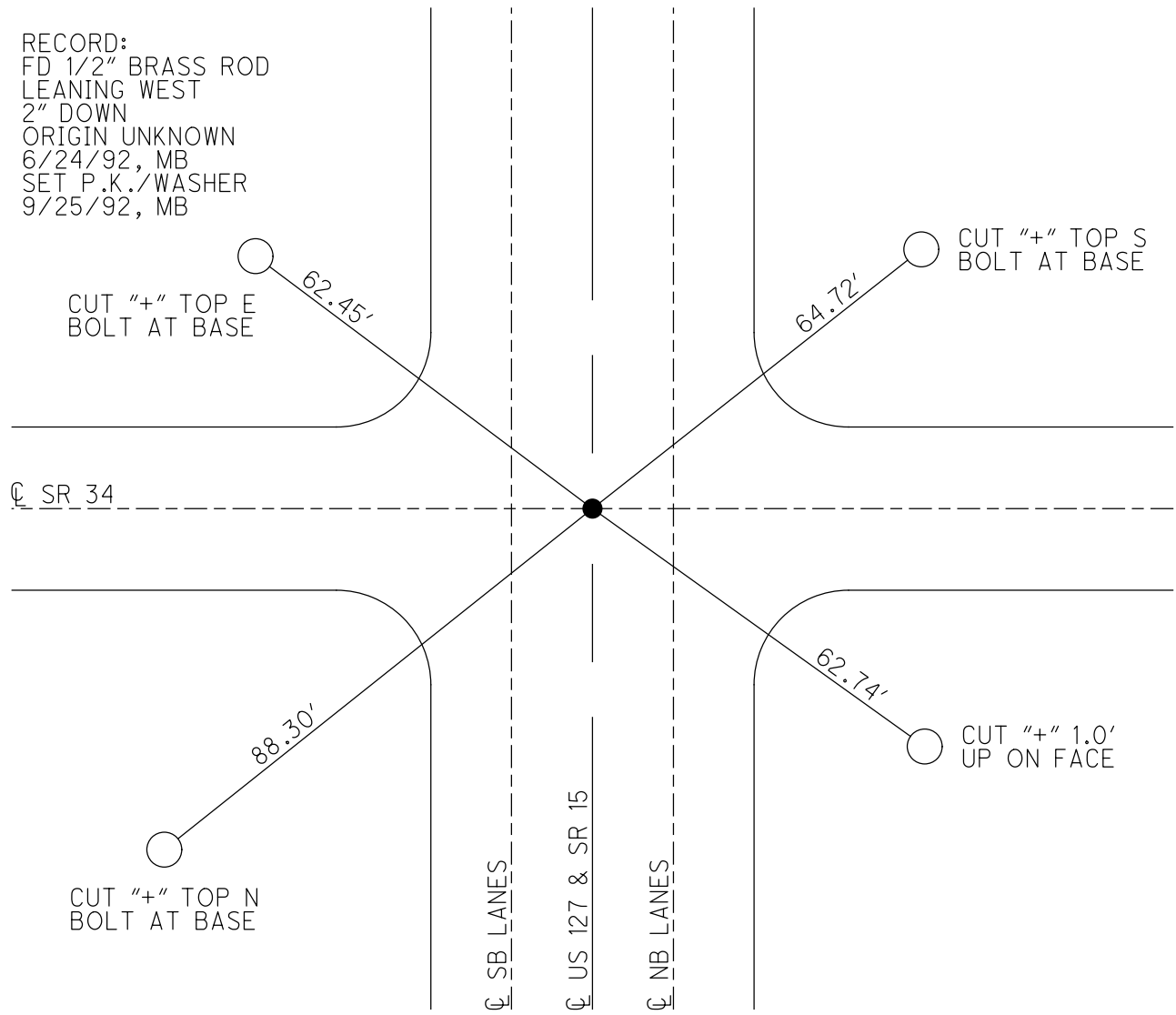
GEOID: _____

GRID: NORTHING: _____

EASTING: _____



RECORD:
 FD 1/2" BRASS ROD
 LEANING WEST
 2" DOWN
 ORIGIN UNKNOWN
 6/24/92, MB
 SET P.K./WASHER
 9/25/92, MB



CUT "+" TOP E
BOLT AT BASE

CUT "+" TOP S
BOLT AT BASE

\odot SR 34

CUT "+" TOP N
BOLT AT BASE

CUT "+" 1.0'
UP ON FACE

\odot SB LANES

\odot US 127 & SR 15

\odot NB LANES

O.D.O.T. DISTRICT 2 SURVEY OFFICE

PERSONNEL

REFERENCE NO. 10

SHEET 17 OF 23

NOTES BARNHISEL

H.C. VAN DUSEN

R.C. KUSZ

DATE 6-24-92

WEATHER Cloudy

TEMP. +60°

ROUTE U.S. 127

COUNTY Williams

TOWNSHIP PULASKI

SECTION 17

T 6 N R 3 E

TYPE MONUMENT 1/2" BRASS ROD (LEANING WEST)

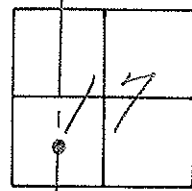
ON SURFACE - BELOW 2"

LEFT - & PAV'T. - RIGHT YES

- TO - EDGE PAVEMENT

S.L.M. 174+39 on E of SR 34

ORIGIN UNKNOWN



Set PK + WASHER
9-25-92
MB

