

O.D.O.T. DISTRICT 2 SURVEY OFFICE (USE ONLY)

PERSONNEL

REFERENCE NO. 10 A

SHEET 18 OF 19

NOTES BARNHEISEL  
 H.C. VAN DUSEN  
 R.C. KUSZ  
BURNETT

DATE 6/24/92  
 WEATHER CLOUDY  
 TEMP. 65°

ROUTE US 127  
 COUNTY WILLIAMS  
 TOWNSHIP PULASKI  
 SECTION 17

DWG BY NIESE PID \_\_\_\_\_

T 6 N R 3 E

TYPE MONUMENT BRASS MON W/ PUNCH HOLE

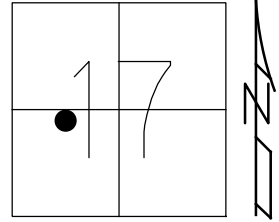
ON SURFACE - ~~BELOW~~ ON

OFFSET CL PAVEMENT ON LT : RT  
- TO - EDGE PAVEMENT

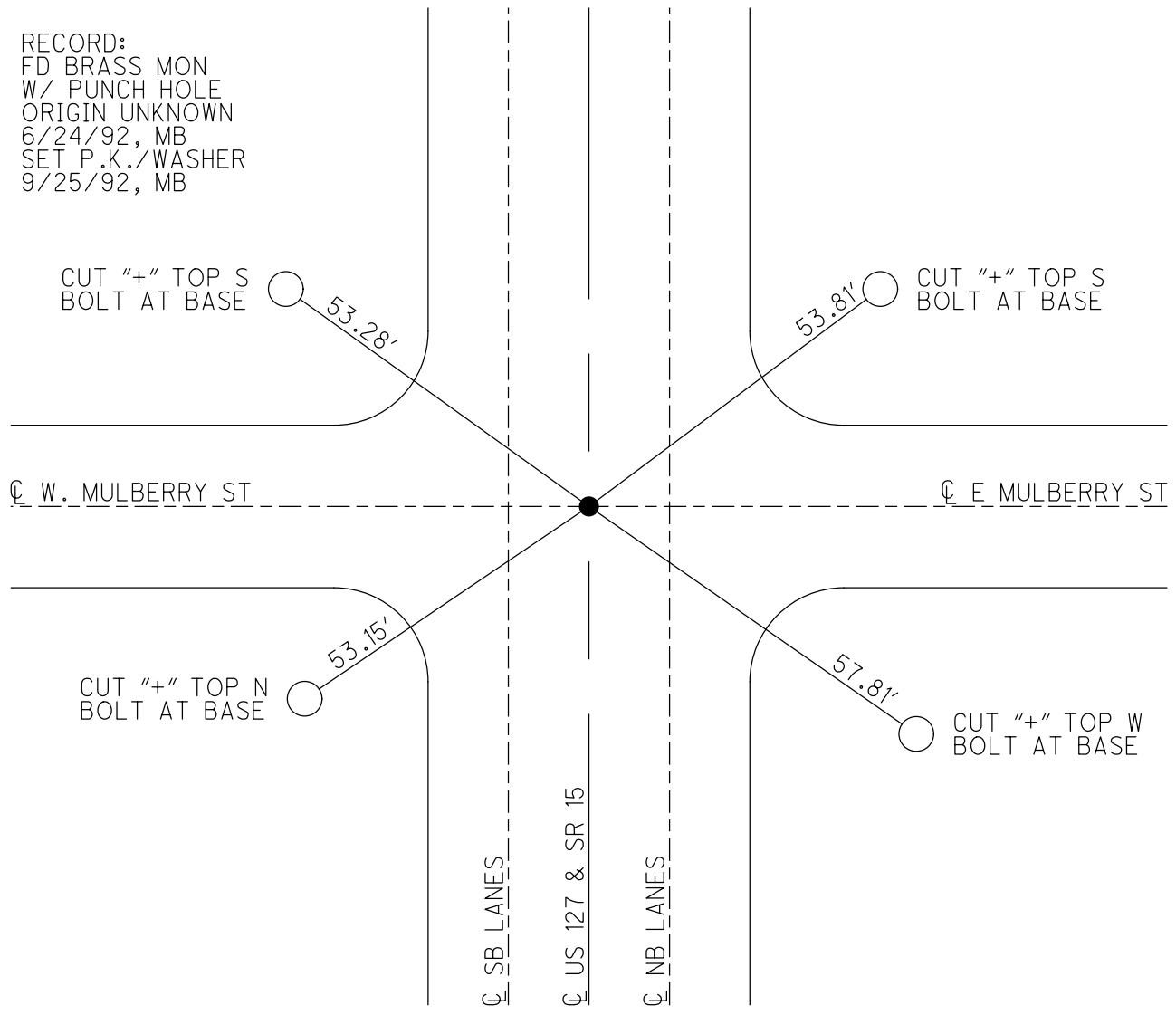
STATION: 183+83

HORZ.DATUM: \_\_\_\_\_ GEOID: \_\_\_\_\_

GRID: NORTHING: \_\_\_\_\_ EASTING: \_\_\_\_\_



RECORD:  
 FD BRASS MON  
 W/ PUNCH HOLE  
 ORIGIN UNKNOWN  
 6/24/92, MB  
 SET P.K./WASHER  
 9/25/92, MB



# O.D.O.T. DISTRICT 2 SURVEY OFFICE

PERSONNEL

NOTES BARNHISEL  
 H.C. VAN DUSEN  
 R.C. KUSZ  
BURNETT

REFERENCE NO. 10A

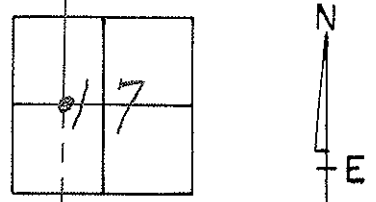
SHEET 18 OF 23

DATE 6-24-92  
 WEATHER Cloudy  
 TEMP. +65°

ROUTE U.S. 127  
 COUNTY Williams  
 TOWNSHIP PULASKI  
 SECTION 17  
T 6 N R 3 E

ORIGINAL UNKNOWN

TYPE MONUMENT BRASS Mon. w/PUNCH HOLE  
 ON SURFACE - BELOW yes  
~~LEFT~~ - PAV'T. - RIGHT yes + ON E EAST  
TO EDGE PAVEMENT  
 S.L.M. 182+83



SET PK + WASHER  
 9-25-92  
 MB

