

O.D.O.T. DISTRICT 2 SURVEY OFFICE (USE ONLY)

PERSONNEL

REFERENCE NO. 13

SHEET 6 OF 9

NOTES JAMES DATE 5/10/19
 H.C. O'DONNELL WEATHER CLOUDY
 R.C. MILLER TEMP. 50°

ROUTE US 127
 COUNTY WILLIAMS
 TOWNSHIP PULASKI
 SECTION 8
 T 6 N R 3 E

DWG BY NASON PID 102821

TYPE MONUMENT MONBOX/ 1" IPIN

ON SURFACE - ~~BELOW~~ ON

OFFSET \odot PAVEMENT ON LT : RT

- TO - EDGE PAVEMENT

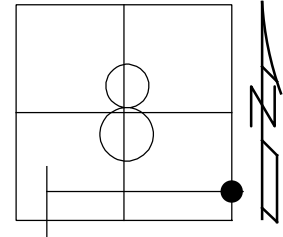
STATION: 256+60.80

HORZ.DATUM: NAD83(2011)

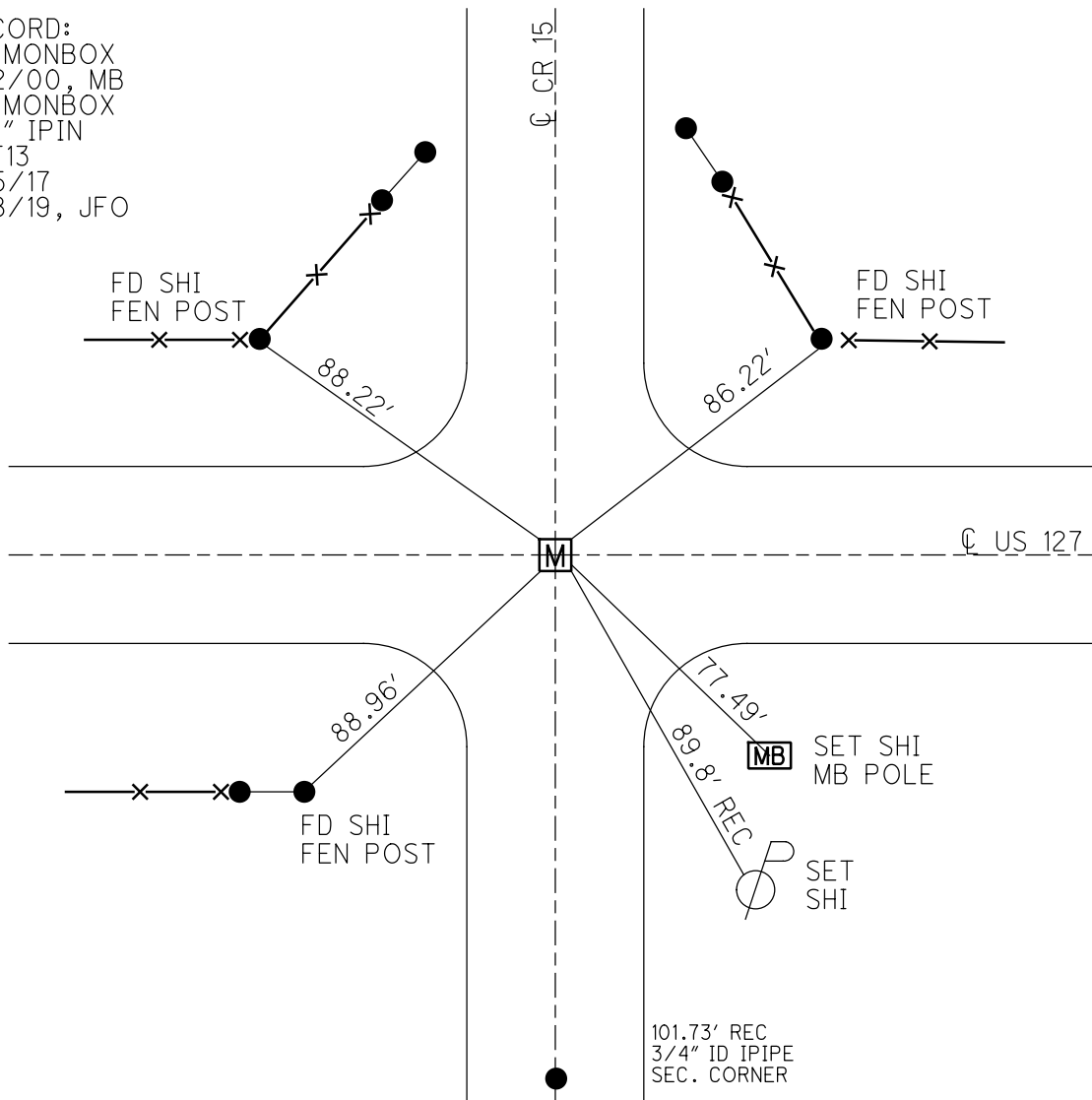
GEOID: 2012A

GRID: NORTHING: 669262.579

EASTING: 1410623.749



RECORD:
 FD MONBOX
 5/2/00, MB
 FD MONBOX
 W/1" IPIN
 REF13
 6/5/17
 8/8/19, JFO



O.D.O.T. DISTRICT 2 SURVEY OFFICE

PERSONNEL

REFERENCE NO. 13

SHEET 2 OF 6

NOTES CANTERBURY

H.C. MOSEK

DATE 5-2-00

ROUTE 127

R.C. BARNAISEL III

WEATHER SUNNY

COUNTY WILLIAMS

TEMP. +67°

TOWNSHIP PULASKI

SECTION 8

T 6 N R 3 E

TYPE MONUMENT Mon. Box DID NOT OPEN

ON SURFACE - BELOW yes

LEFT - PAV'T. - RIGHT yes, N&S also

— TO — EDGE PAVEMENT

S.L.M. 255+78

