

O.D.O.T. DISTRICT 2 SURVEY OFFICE (USE ONLY)

PERSONNEL

REFERENCE NO. 14 A

SHEET 8 OF 9

NOTES RHOADES
 H.C. O'DONNELL
 R.C. BARNHISEL
RHOADES

DATE 4/8/19
 WEATHER CLOUDY
 TEMP. 60°

ROUTE US 127
 COUNTY WILLIAMS
 TOWNSHIP PULASKI
 SECTION 9

DWG BY NASON PID 102821

T 6 N R 3 E

TYPE MONUMENT P.K./WASHER

ON SURFACE - ~~BELOW~~ ON

OFFSET ☒ PAVEMENT ON LT : RT

- TO - EDGE PAVEMENT

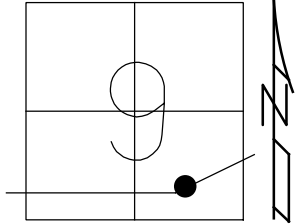
STATION: 284+59.8

HORIZ.DATUM: NAD83(2011)

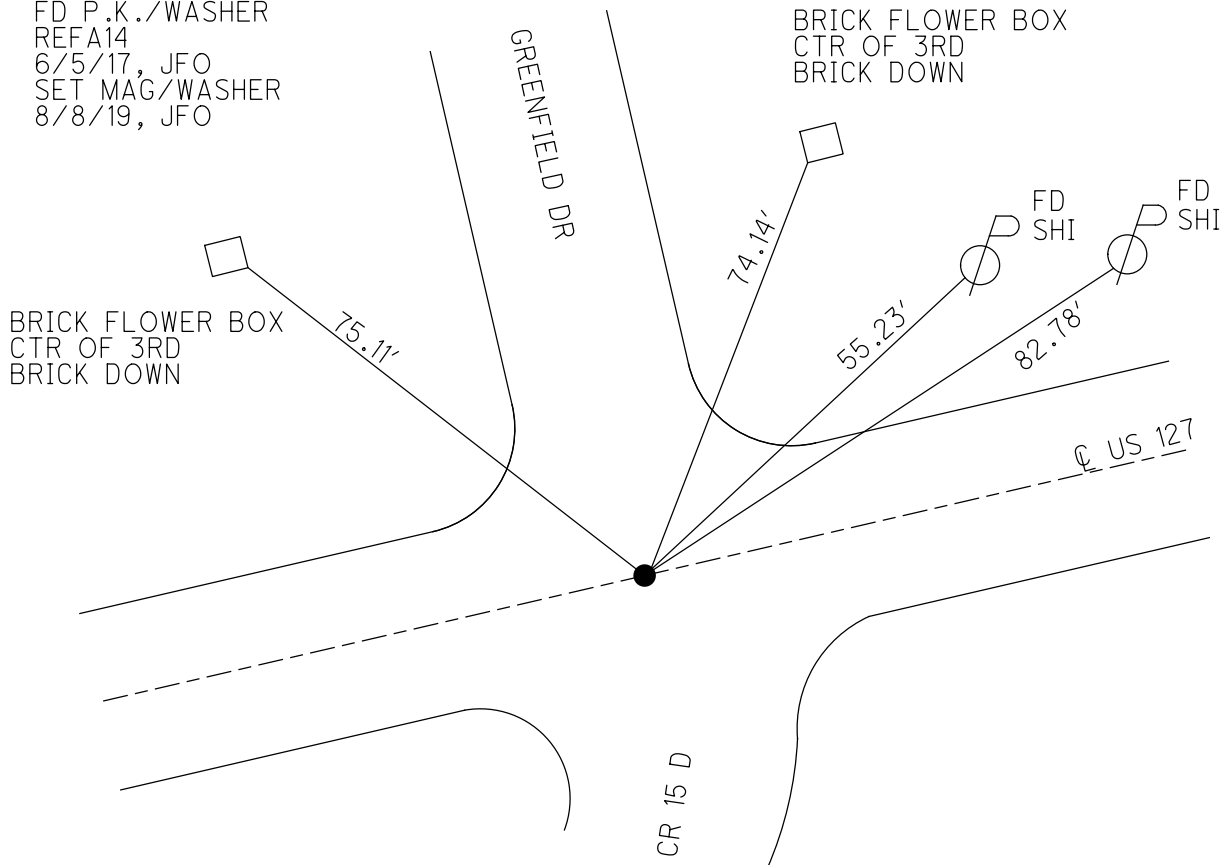
GEOID: 2012A

GRID: NORTHING: 669256.039

EASTING: 1413413.559



RECORD:
 FD COC.NAIL
 3" DOWN
 5/2/00, MB
 SET P.K./WASHER
 7/28/00, MRC
 FD P.K./WASHER
 REFA14
 6/5/17, JFO
 SET MAG/WASHER
 8/8/19, JFO



O.D.O.T. DISTRICT 2 SURVEY OFFICE

PERSONNEL

REFERENCE NO. 14-A

SHEET 4 OF 6

NOTES CANTERBURY

H.C. MOSEK

DATE 5-2-00

ROUTE 127

R.C. BARNHISEL III

WEATHER SUNNY

COUNTY WILLIAMS

TEMP. +67°

TOWNSHIP PULASKI

SECTION 9

T6 N R 3 E

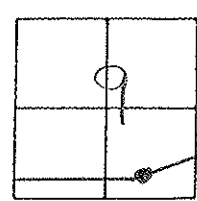
TYPE MONUMENT CONC. NAIL

ON SURFACE - BELOW 3"

LEFT - & PAV'T. - RIGHT YES

TO EDGE PAVEMENT

S.L.M. 283+76 ON E NORTH



RESET PK/WASHER
 7-28-00
 M.R.C.

