

O.D.O.T. DISTRICT 2 SURVEY OFFICE (USE ONLY)

PERSONNEL

REFERENCE NO. 15

SHEET 1 OF 56

NOTES RHOADES

DATE 4/8/19

ROUTE US 127

H.C. O'DONNELL

WEATHER CLOUDY

COUNTY WILLIAMS

R.C. RHOADES

TEMP. 60°

TOWNSHIP PULASKI

DWG BY NASON PID 102821

SECTION 9

T 6 N R 3 E

TYPE MONUMENT P.K. SHANK

ON SURFACE - ~~BELOW~~ ON

OFFSET Q PAVEMENT 0.5' ~~RT~~ : RT

- TO - EDGE PAVEMENT

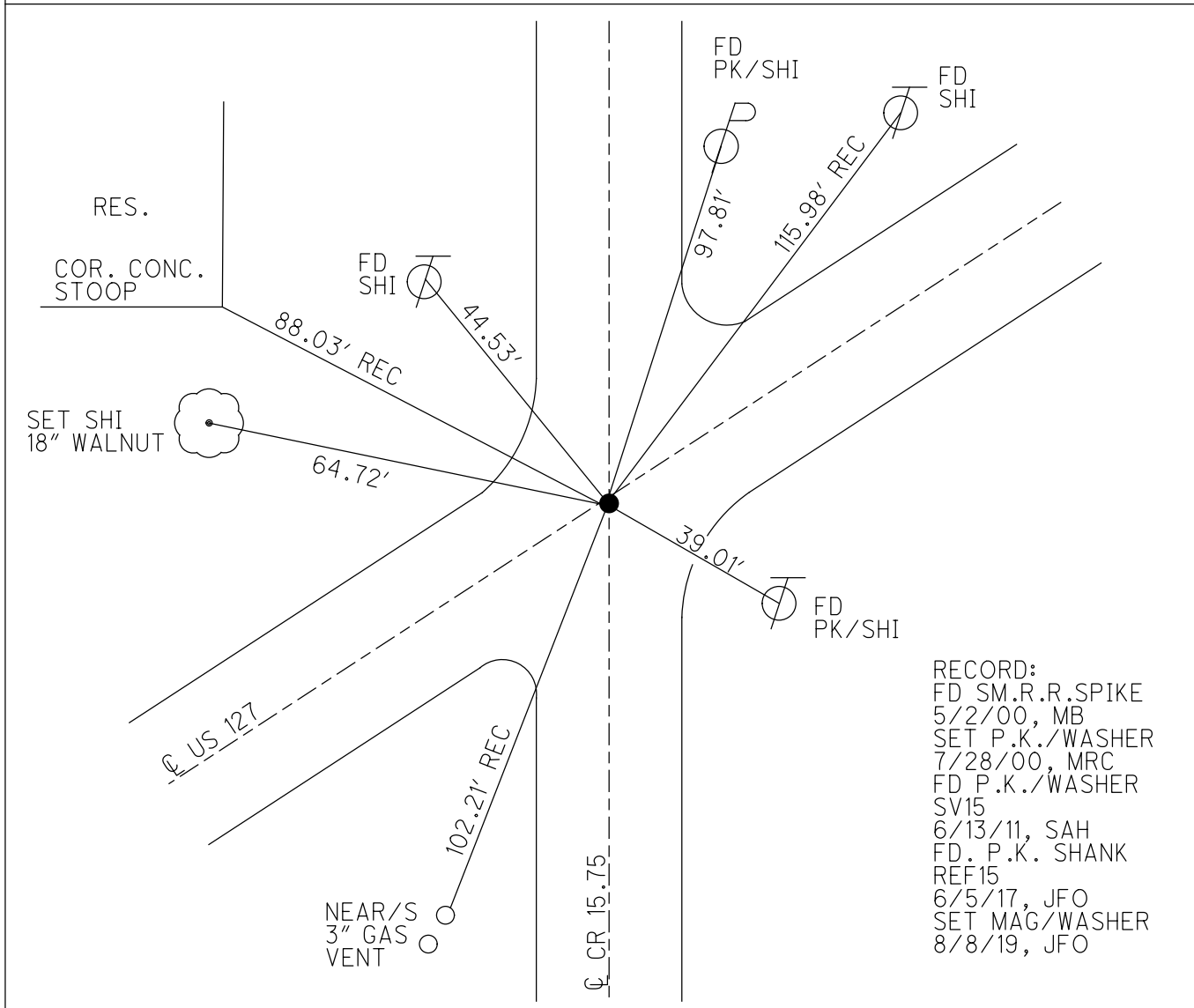
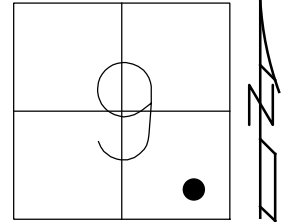
STATION: 301+44.72

HORIZ. DATUM: NAD83 (2011)

GEOID: 2012A

GRID: NORTHING: 670095.458

EASTING: 1414868.067



RECORD:  
 FD SM.R.R.SPIKE  
 5/2/00, MB  
 SET P.K./WASHER  
 7/28/00, MRC  
 FD P.K./WASHER  
 SV15  
 6/13/11, SAH  
 FD. P.K. SHANK  
 REF15  
 6/5/17, JFO  
 SET MAG/WASHER  
 8/8/19, JFO

O.D.O.T. DISTRICT 2 SURVEY OFFICE (USE ONLY)

PERSONNEL \_\_\_\_\_ REFERENCE NO. 15 SHEET 1 OF 56  
 NOTES CANTERBURY DATE 5/2/00 ROUTE US 127  
 H.C. MOSER WEATHER SUNNY COUNTY WILLIAMS  
 R.C. BARNHISEL TEMP. 67° TOWNSHIP PULASKI  
 SECTION 9  
 T 6 N R 3 E

TYPE MONUMENT SM.R.R.SPIKE  
 ON SURFACE - ~~BELOW~~ ON \_\_\_\_\_  
~~LEFT~~ - Q PAV'T - RIGHT 0.5'  
 \_\_\_\_\_ TO \_\_\_\_\_ EDGE PAVEMENT  
 S.L.M. 300+61

Grid: Northing: 670095.364 Easting: 1414868.011

