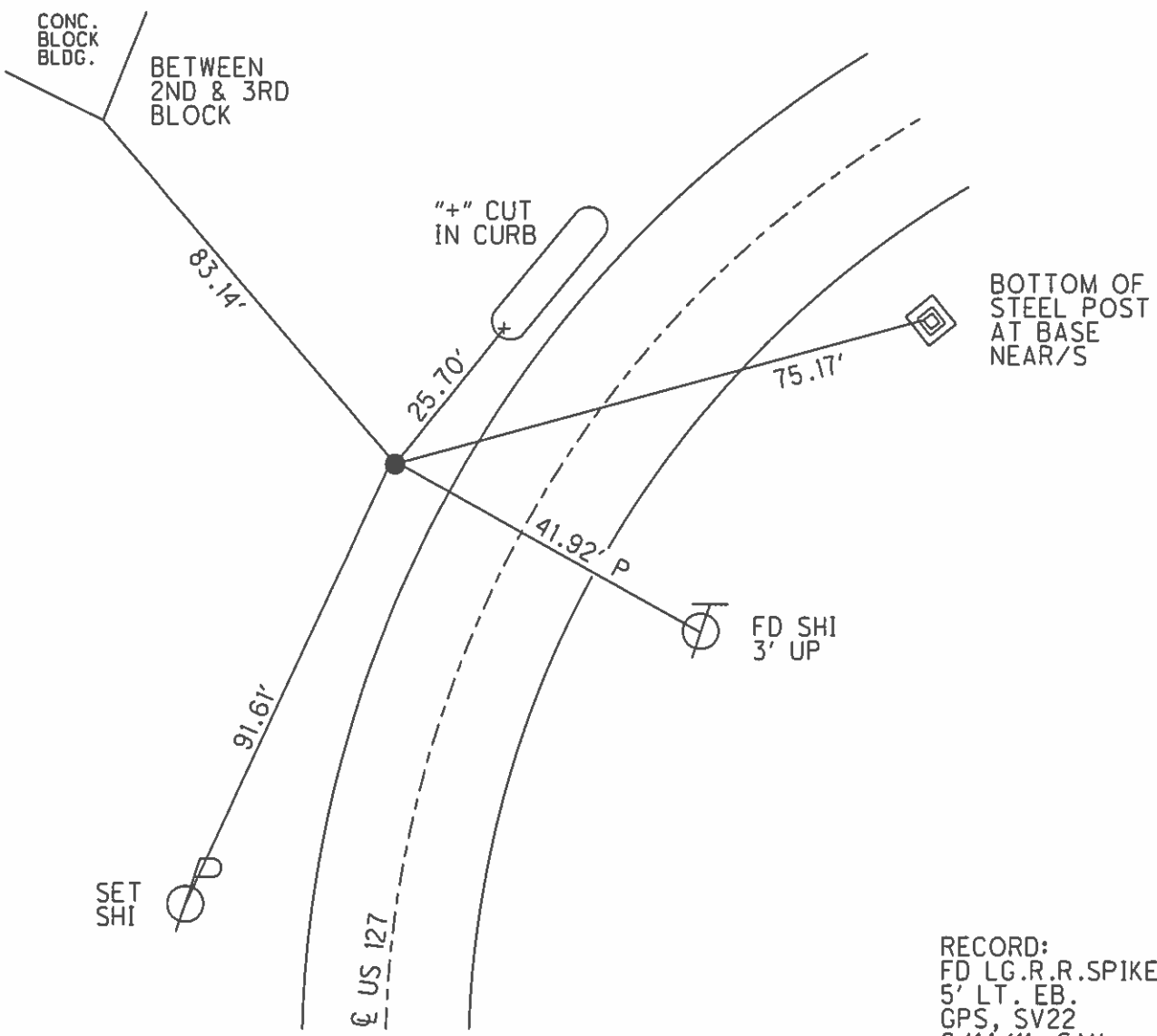
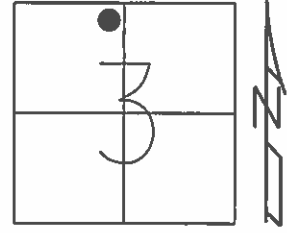


O.D.O.T. DISTRICT 2 SURVEY OFFICE (USE ONLY)

PERSONNEL	REFERENCE NO.	<u>22</u>	SHEET	<u>20</u>	OF	<u>56</u>
NOTES	<u>CANTERBURY</u>	DATE	<u>6/4/02</u>	ROUTE	<u>US 127</u>	
H.C.	<u>BARNHISEL</u>	WEATHER	<u>CLOUDY</u>	COUNTY	<u>WILLIAMS</u>	
R.C.	<u>MALINSKY</u>	TEMP.	<u>68°</u>	TOWNSHIP	<u>PULASKI</u>	
	<u>MACHALAK</u>			SECTION	<u>3</u>	
				T	<u>6</u>	R
					<u>N</u>	<u>E</u>

TYPE MONUMENT LG.R.R.SPIKE  
 ON SURFACE - ~~BELOW~~ ON  
 LEFT - ☉ PAV'T - ~~RIGHT~~ 19.2'  
8.7' LT TO LT EDGE PAVEMENT  
 S.L.M. 393+75

Grid: Northing: 679041.757 Easting: 1418662.698



RECORD:  
 FD LG.R.R.SPIKE  
 5' LT. EB.  
 GPS, SV22  
 6/14/11, SAH