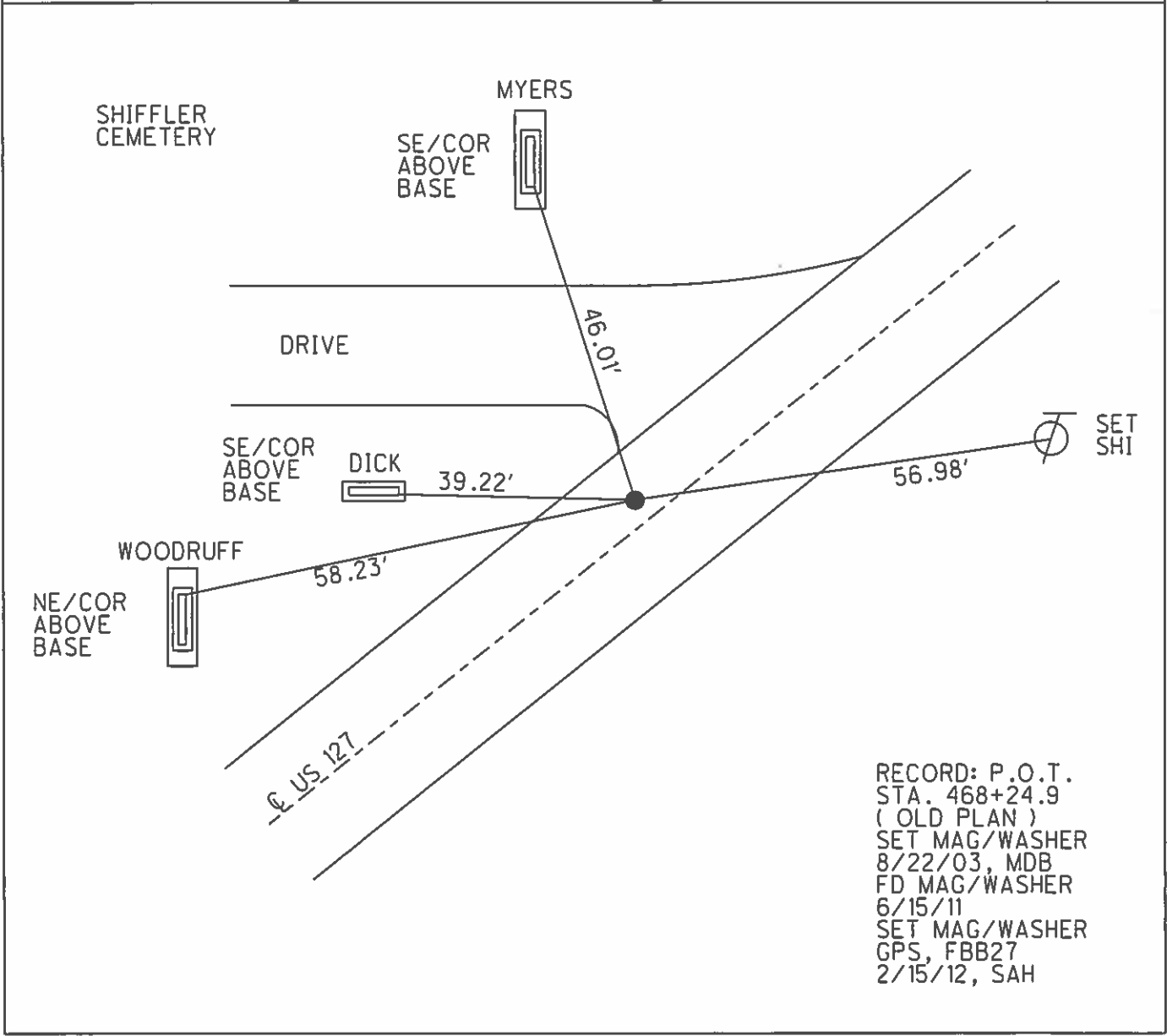
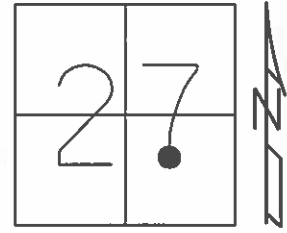


O.D.O.T. DISTRICT 2 SURVEY OFFICE (USE ONLY)

PERSONNEL _____ REFERENCE NO. 27 B SHEET 30 OF 56
 NOTES CANTERBURY DATE 6/8/02 ROUTE US 127
 H.C. BARNHISEL WEATHER SUNNY COUNTY WILLIAMS
 R.C. MOSER TEMP. 75° TOWNSHIP JEFFERSON
 _____ SECTION 27
 _____ T 7 N R 3 E

TYPE MONUMENT SM.R.R.SPIKE
 ON SURFACE - BELOW ON
 LEFT - ☉ PAV'T - RIGHT 4.2'
5.9' TO LT EDGE PAVEMENT
 S.L.M. 466+65
 Grid: Northing: 686071.524 Easting: 1419653.726



RECORD: P.O.T.
 STA. 468+24.9
 (OLD PLAN)
 SET MAG/WASHER
 8/22/03, MDB
 FD MAG/WASHER
 6/15/11
 SET MAG/WASHER
 GPS, FBB27
 2/15/12, SAH

PERSONNEL	TITLE	PERSONNEL	TITLE
Beach			
Passefall			
Wise			
Clapp			

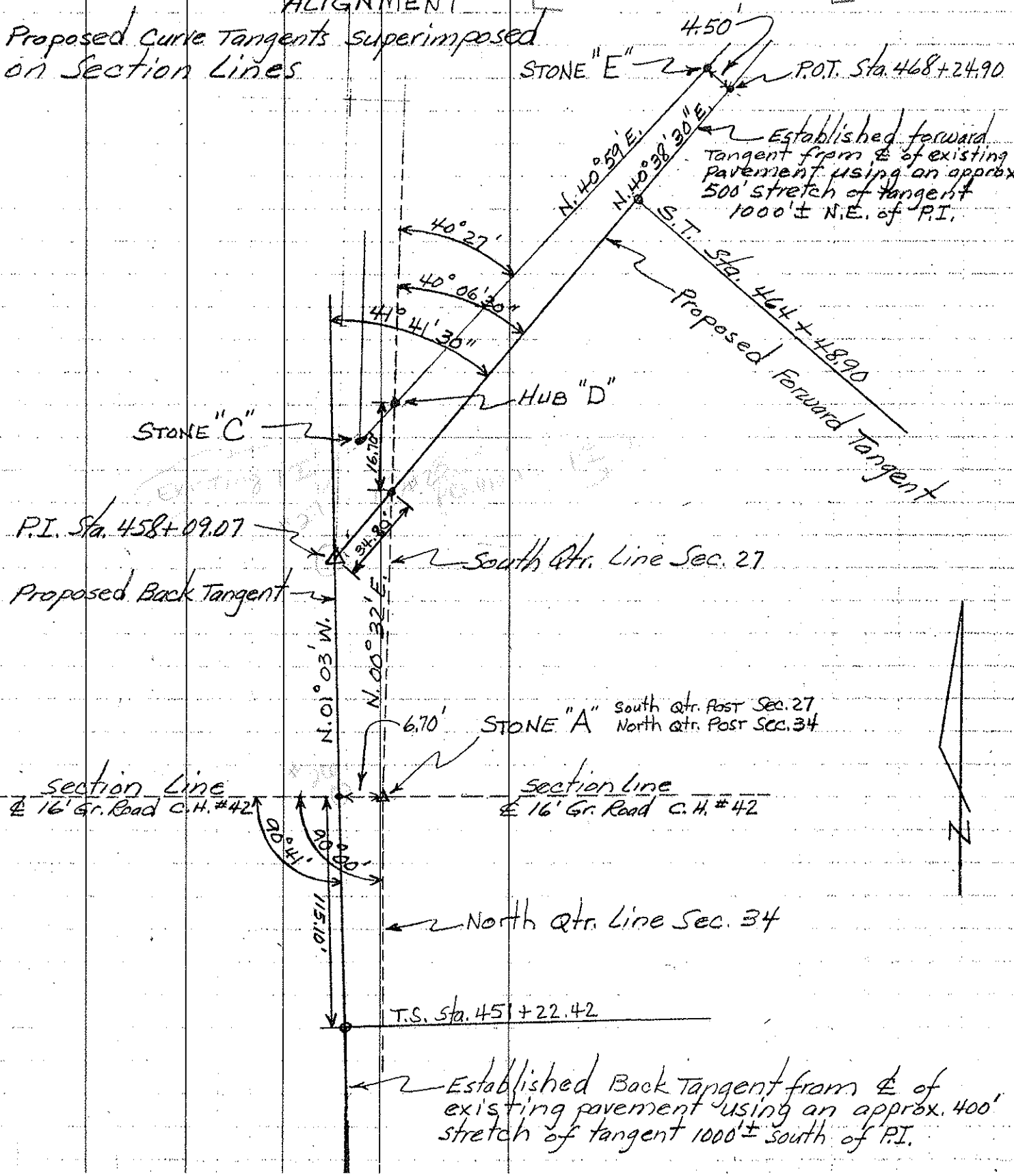
COUNTY Williams DATE Dec. 1955
 S. R. # U.S. 127 WEATHER _____
 SEC. (8.55) Jefferson Twp. TEMP. 20°-32°

DESCRIPTION SHIFFLER CEMETERY CURVE RELOCATION JOB NO. 02190

ALIGNMENT

[See FILE: WIL #19]

Proposed curve tangents superimposed on section lines.



Established Back Tangent from center of existing pavement using an approx. 400' stretch of tangent 1000'± south of P.I.

Established forward tangent from center of existing pavement using an approx. 500' stretch of tangent 1000'± N.E. of P.I.