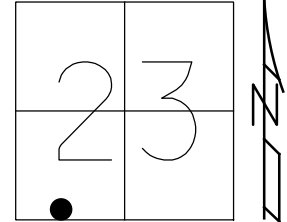


O.D.O.T. DISTRICT 2 SURVEY OFFICE (USE ONLY)

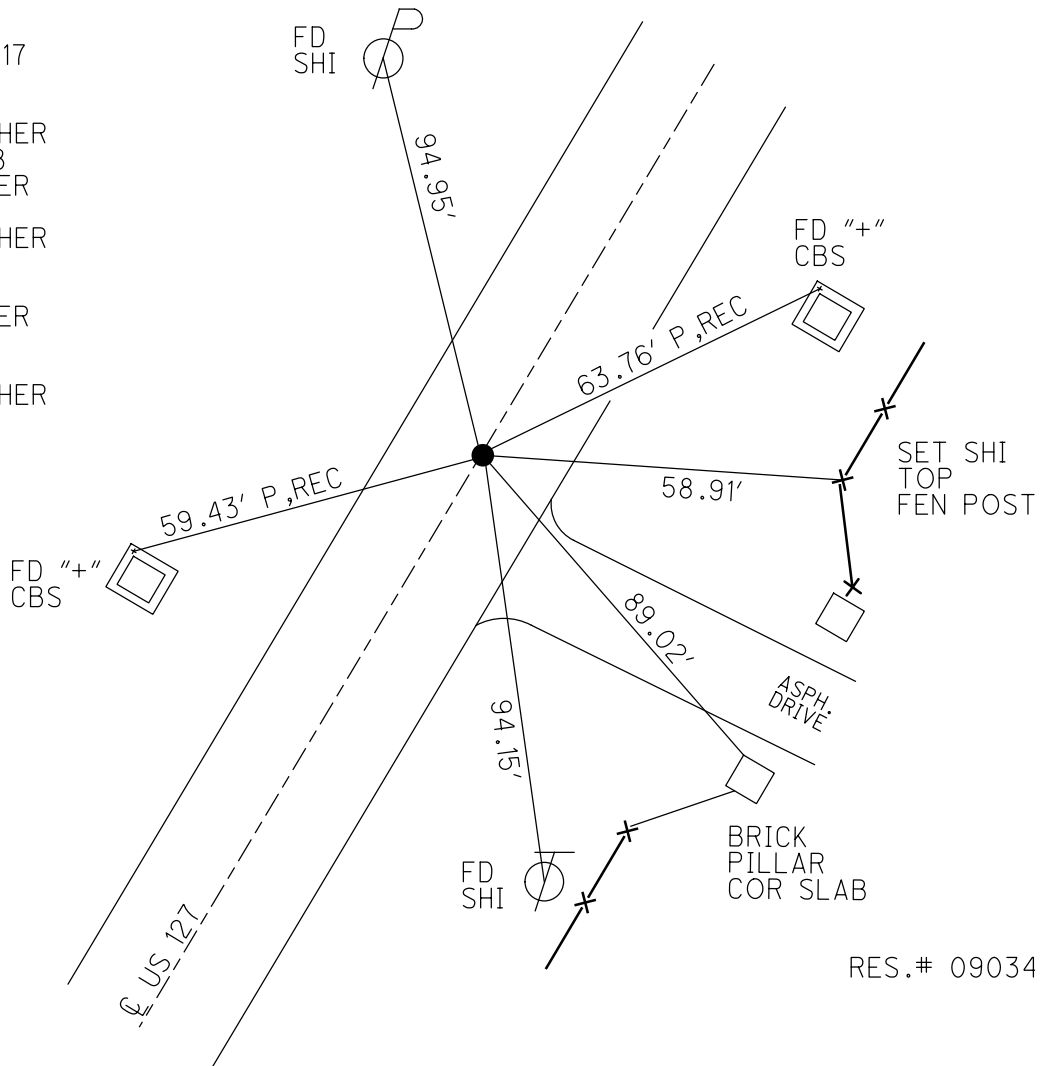
PERSONNEL _____ REFERENCE NO. 30 A SHEET 36 OF 56
 NOTES RHOADES DATE 4/9/19 ROUTE US 127
 H.C. O'DONNELL WEATHER SUNNY/WINDY COUNTY WILLIAMS
 R.C. RHOADES TEMP. 50° TOWNSHIP JEFFERSON
 DWG BY NASON PID 102821 SECTION 23
 T 7 N R 3 E

TYPE MONUMENT MAG/WASHER
 ON SURFACE - ~~BELOW~~ ON
 OFFSET ☐ PAVEMENT 0.2' ~~ET~~ : RT
11.9' TO RT EDGE PAVEMENT
 STATION: 534+69.32



HORIZ.DATUM: NAD83(2011) GEOID: 2012A
 GRID: NORTHING: 690203.734 EASTING: 1423087.490

RECORD: P.T.
 STA. 520+50.17
 FD P.K.NAIL
 6/8/02, MB
 SET MAG/WASHER
 8/22/03, MDB
 FD MAG/WASHER
 6/20/11
 SET MAG/WASHER
 FA30
 2/16/12, SAH
 FD MAG/WASHER
 REFA30
 6/8/17, JFO
 SET MAG/WASHER
 8/14/19, JFO

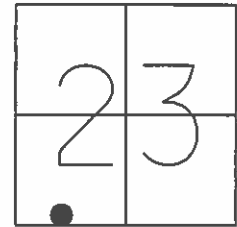


RES.# 09034

O.D.O.T. DISTRICT 2 SURVEY OFFICE (USE ONLY)

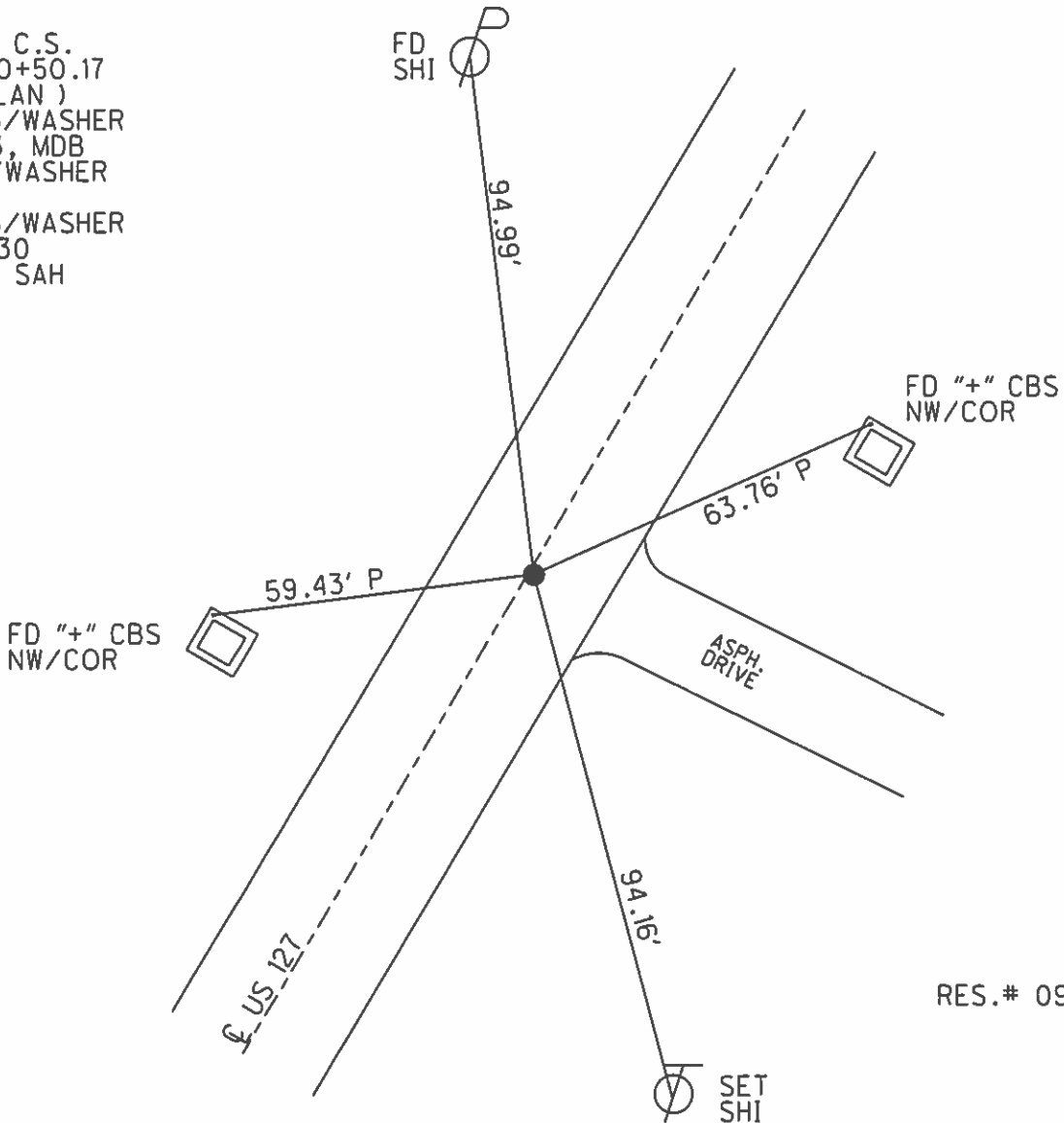
PERSONNEL _____ REFERENCE NO. 30 A SHEET 36 OF 56
 NOTES CANTERBURY DATE 6/8/02 ROUTE US 127
 H.C. BARNHISEL WEATHER SUNNY COUNTY WILLIAMS
 R.C. MOSER TEMP. 75° TOWNSHIP JEFFERSON
 _____ SECTION 23
 _____ T 7 N R 3 E

TYPE MONUMENT P.K.NAIL
 ON SURFACE - ~~BELOW~~ ON _____
~~LEFT~~ - Q PAV'T - RIGHT 0.2'
11.9' TO RT EDGE PAVEMENT
 S.L.M. 520+89



Grid: Northing: 690203.710 Easting: 1423087.425

RECORD: C.S.
 STA. 520+50.17
 (OLD PLAN)
 SET MAG/WASHER
 8/22/03, MDB
 FD MAG/WASHER
 6/20/11
 SET MAG/WASHER
 GPS, FA30
 2/16/12, SAH



RES.# 09034