

O.D.O.T. DISTRICT 2 SURVEY OFFICE (USE ONLY)

PERSONNEL

REFERENCE NO. 30 G

SHEET 42 OF 56

NOTES RHOADES DATE 4/10/19
 H.C. O'DONNELL WEATHER PTLY CLOUDY
 R.C. RHOADES TEMP. 40°

ROUTE US 127
 COUNTY WILLIAMS
 TOWNSHIP JEFFERSON
 SECTION 23
 T 7 N R 3 E

DWG BY NASON PID 102821

TYPE MONUMENT MAG/WASHER

ON SURFACE - ~~BELOW~~ ON

OFFSET CL PAVEMENT 0.7' LT : ~~RT~~

12.0' TO RT EDGE PAVEMENT

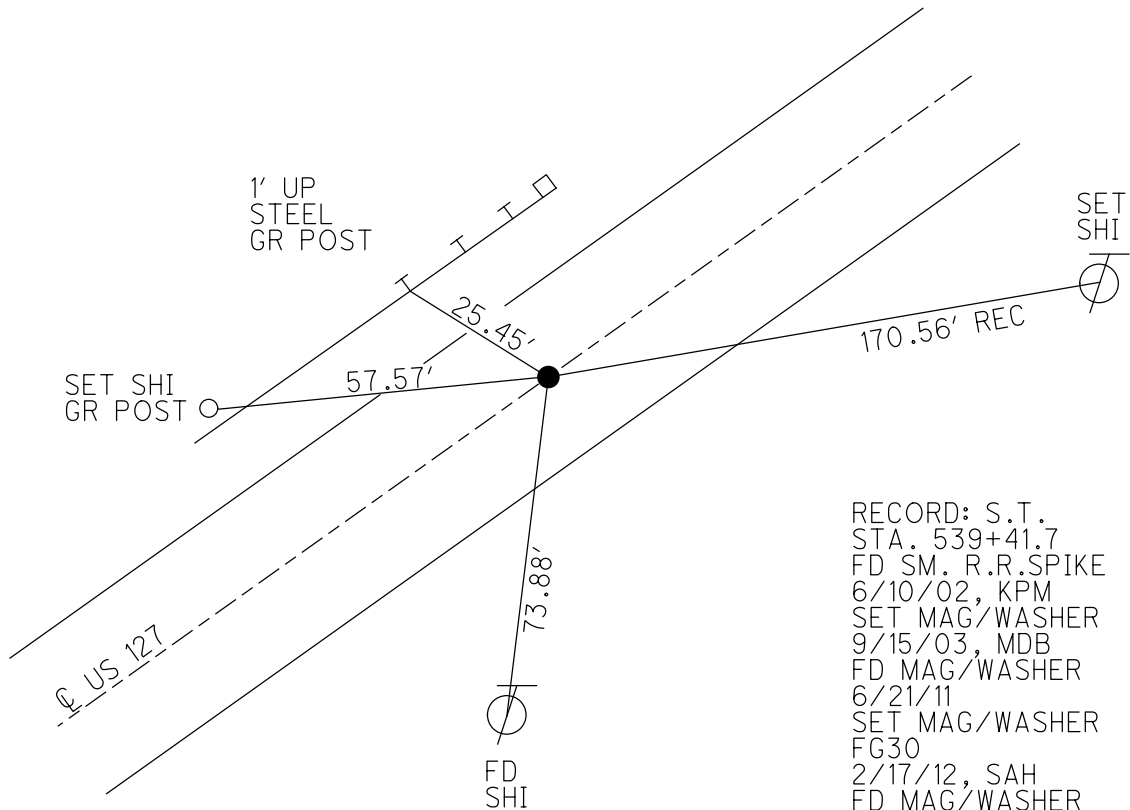
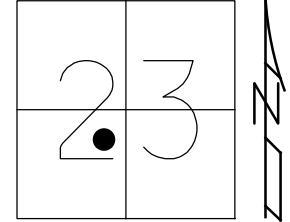
STATION: 551+60.68

HORIZ.DATUM: NAD83(2011)

GEOID: 2012A

GRID: NORTHING: 691662.862

EASTING: 1423767.564

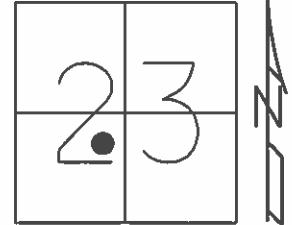


RECORD: S.T.
 STA. 539+41.7
 FD SM. R.R.SPIKE
 6/10/02, KPM
 SET MAG/WASHER
 9/15/03, MDB
 FD MAG/WASHER
 6/21/11
 SET MAG/WASHER
 FG30
 2/17/12, SAH
 FD MAG/WASHER
 REFG30
 6/8/17, JFO
 SET MAG/WASHER
 8/14/19, JFO

O.D.O.T. DISTRICT 2 SURVEY OFFICE (USE ONLY)

PERSONNEL _____ REFERENCE NO. 30 G SHEET 42 OF 56
NOTES CHLEBECK DATE 6/10/02 ROUTE US 127
H.C. MOSER WEATHER SUNNY COUNTY WILLIAMS
R.C. SIEFRING TEMP. 85° TOWNSHIP JEFFERSON
BEAUMONT SECTION 23
T 7 N R 3 E

TYPE MONUMENT SM.R.R.SPIKE
ON SURFACE - ~~BELOW~~ ON _____
LEFT - ℄ PAV'T - RIGHT ON _____
12.3' TO RT EDGE PAVEMENT
S.L.M. 537+81



Grid: Northing: 691662.885 Easting: 1423767.499

RECORD: S.T.
STA. 539+41.7
(OLD PLAN)
SET MAG/WASHER
9/15/03, MDB
FD MAG/WASHER
6/21/11
SET MAG/WASHER
GPS, FG30
2/17/12, SAH

