

O.D.O.T. DISTRICT 2 SURVEY OFFICE (USE ONLY)

PERSONNEL

REFERENCE NO. 32

SHEET 44 OF 56

NOTES RHOADES DATE 4/10/19  
 H.C. O'DONNELL WEATHER PTLY CLOUDY  
 R.C. RHOADES TEMP. 40°

ROUTE US 127  
 COUNTY WILLIAMS  
 TOWNSHIP JEFFERSON  
 SECTION 23  
T 7 N R 3 E

DWG BY NASON PID 102821

TYPE MONUMENT MAG/WASHER

ON SURFACE - ~~BELOW~~ ON \_\_\_\_\_

OFFSET  $\odot$  PAVEMENT 1.0' ~~LT~~ : RT

- TO - EDGE PAVEMENT

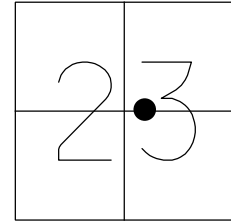
STATION: 566+18.39

HORZ.DATUM: NAD83(2011)

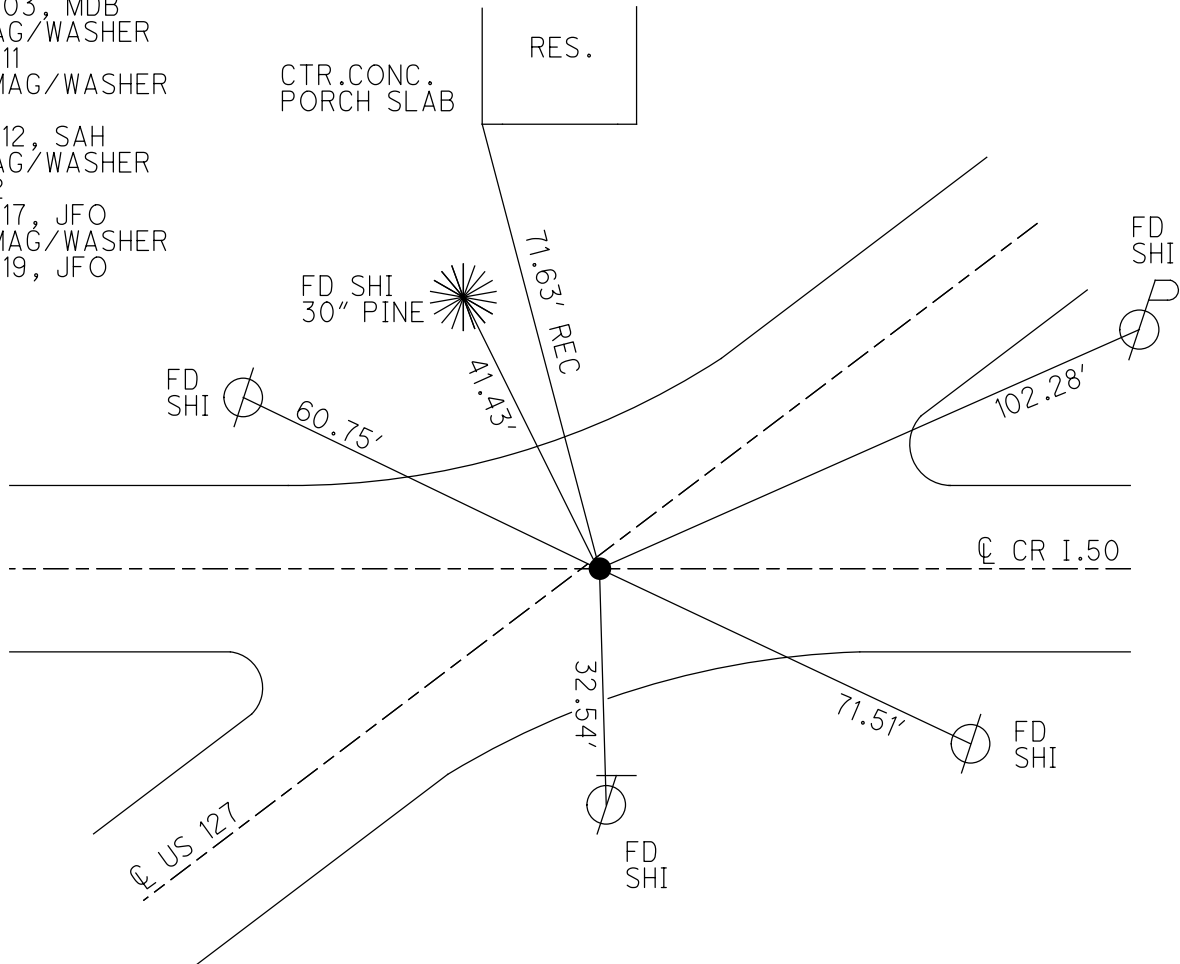
GEOID: 2012A

GRID: NORTHING: 692479.021

EASTING: 1424976.066



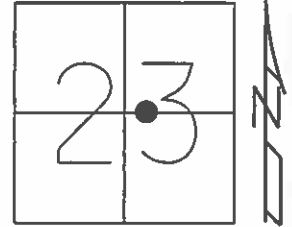
RECORD: P.I.  
 FD P.K.NAIL  
 6/10/02, KPM  
 SET MAG/WASHER  
 9/15/03, MDB  
 FD MAG/WASHER  
 6/21/11  
 SET MAG/WASHER  
 F32  
 2/17/12, SAH  
 FD MAG/WASHER  
 REF32  
 6/12/17, JFO  
 SET MAG/WASHER  
 8/14/19, JFO



O.D.O.T. DISTRICT 2 SURVEY OFFICE (USE ONLY)

PERSONNEL	REFERENCE NO.	<u>32</u>	SHEET	<u>44</u>	OF	<u>56</u>
NOTES	<u>CHLEBECK</u>	DATE	<u>6/10/02</u>	ROUTE	<u>US 127</u>	
H.C.	<u>MOSER</u>	WEATHER	<u>SUNNY</u>	COUNTY	<u>WILLIAMS</u>	
R.C.	<u>SIEFRING</u>	TEMP.	<u>85°</u>	TOWNSHIP	<u>JEFFERSON</u>	
	<u>BEAUMONT</u>			SECTION	<u>23</u>	
				T	<u>7</u>	R
					<u>N</u>	<u>3</u>
					<u>E</u>	

TYPE MONUMENT P.K.NAIL  
 ON SURFACE - ~~BELOW~~ ON  
~~LEFT~~ - Q PAV'T - RIGHT 1.0', ON Q W-E  
- TO - EDGE PAVEMENT  
 S.L.M. 552+38  
 Grid: Northing: 692479.084 Easting: 1424975.943



RECORD:  
 SET MAG/WASHER  
 9/15/03, MDB  
 FD MAG/WASHER  
 6/21/11  
 SET MAG/WASHER  
 GPS, F32  
 2/17/12, SAH

