

O.D.O.T. DISTRICT 2 SURVEY OFFICE (USE ONLY)

PERSONNEL

REFERENCE NO. 33

SHEET 46 OF 56

NOTES RHOADES

DATE 4/10/19

ROUTE US 127

H.C. O'DONNELL

WEATHER PTLY CLOUDY

COUNTY WILLIAMS

R.C. RHOADES

TEMP. 40°

TOWNSHIP JEFFERSON

DWG BY NASON PID 102821

SECTION 23

T 7 N R 3 E

TYPE MONUMENT MAG/WASHER

ON SURFACE - ~~BELOW~~ ON

OFFSET ☉ PAVEMENT ON LT : RT

10.6' TO RT EDGE PAVEMENT 2' SW OF ☉ N.

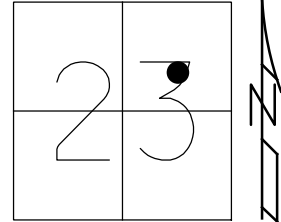
STATION: 577+54.83

HORIZ.DATUM: NAD83(2011)

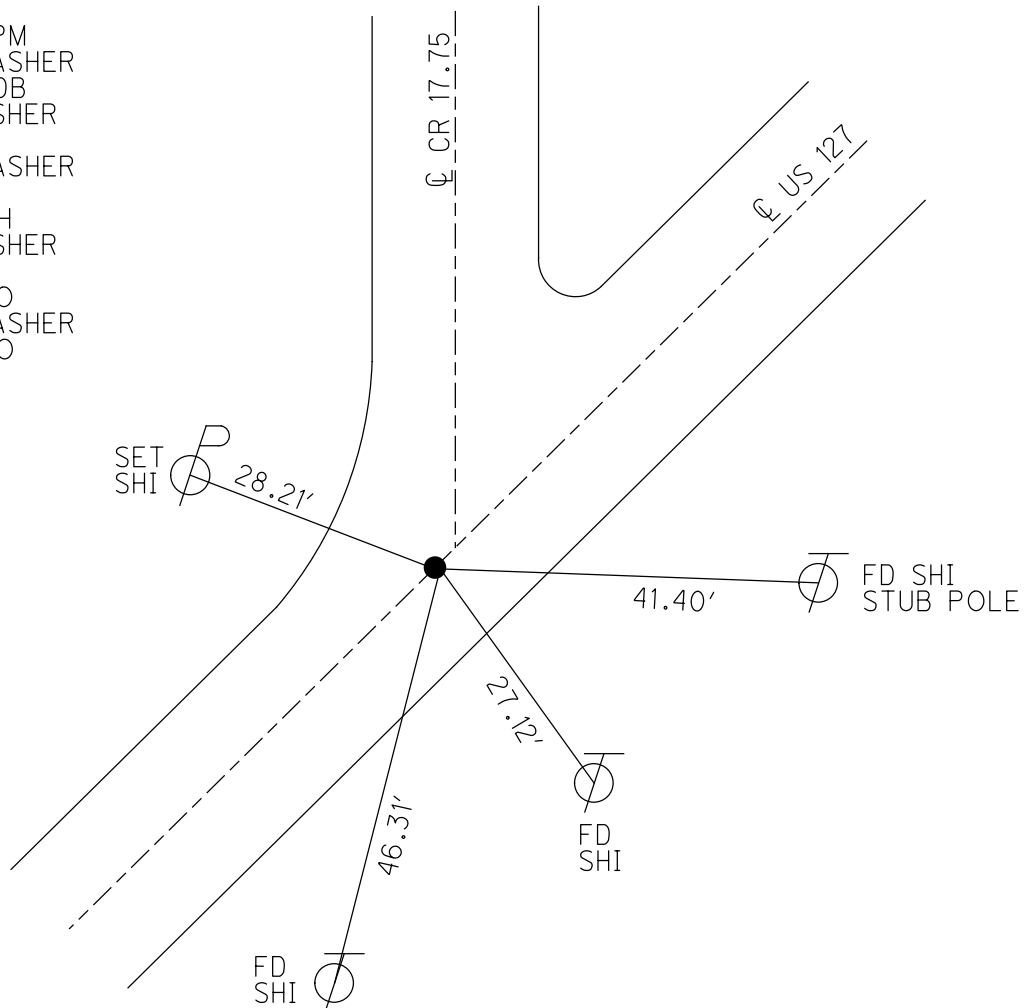
GEOID: 2012A

GRID: NORTHING: 693192.014

EASTING: 1425860.173



RECORD:  
 FD P.K.NAIL  
 6/10/02, KPM  
 SET MAG/WASHER  
 9/15/03, MDB  
 FD MAG/WASHER  
 6/21/11  
 SET MAG/WASHER  
 F33  
 2/17/12, SAH  
 FD MAG/WASHER  
 REF33  
 6/12/17, JFO  
 SET MAG/WASHER  
 8/15/19, JFO

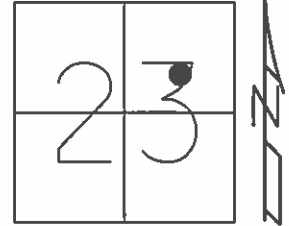


O.D.O.T. DISTRICT 2 SURVEY OFFICE (USE ONLY)

PERSONNEL \_\_\_\_\_ REFERENCE NO. 33 SHEET 46 OF 56  
 NOTES CHLEBECK DATE 6/10/02 ROUTE US 127  
 H.C. MOSER WEATHER SUNNY COUNTY WILLIAMS  
 R.C. SIEFRING TEMP. 85° TOWNSHIP JEFFERSON  
BEAUMONT SECTION 23  
 T 7 N R 3 E

TYPE MONUMENT P.K.NAIL  
 ON SURFACE - ~~BELOW~~ ON  
 LEFT - ☉ PAV'T - RIGHT ON, 2' SW OF ☉ N.  
10.6' TO RT EDGE PAVEMENT  
 S.L.M. 563+76

Grid: Northing: 693192.000 Easting: 1425860.098



RECORD:  
 SET MAG/WASHER  
 9/15/03, MDB  
 FD MAG/WASHER  
 6/21/11  
 SET MAG/WASHER  
 GPS, F33  
 2/17/12, SAH

